

**UNITED STATES  
DEPARTMENT OF THE INTERIOR  
BUREAU OF LAND MANAGEMENT**

Sundry Notices and Reports on Wells

**RECEIVED**

DEC 16 2009

Bureau of Land Management  
Farmington Field Office

1. Type of Well  
GAS

2. Name of Operator

**ConocoPhillips**

3. Address & Phone No. of Operator

PO Box 4289, Farmington, NM 87499 (505) 326-9700

4. Location of Well, Footage, Sec., T, R, M

Unit J (NWSE), 2000' FSL & 2200' FEL, Section 29, T25N, R4W, NMPM

5. Lease Number  
Jic 41

6. If Indian, All. or  
Tribe Name

Jicarilla Apache

7. Unit Agreement Name

8. Well Name & Number  
Jicarilla 30 6

9. API Well No.

30-039-20461

10. Field and Pool  
West Lindrith GL/DK

11. County and State  
Rio Arriba, NM

**12. CHECK APPROPRIATE BOX TO INDICATE NATURE OF NOTICE, REPORT, OTHER DATA**

Type of Submission	Type of Action		
<input checked="" type="checkbox"/> Notice of Intent	<input checked="" type="checkbox"/> Abandonment	<input type="checkbox"/> Change of Plans	<input type="checkbox"/> Other -
<input type="checkbox"/> Subsequent Report	<input type="checkbox"/> Recompletion	<input type="checkbox"/> New Construction	
<input type="checkbox"/> Final Abandonment	<input type="checkbox"/> Plugging	<input type="checkbox"/> Non-Routine Fracturing	
	<input type="checkbox"/> Casing Repair	<input type="checkbox"/> Water Shut off	
	<input type="checkbox"/> Altering Casing	<input type="checkbox"/> Conversion to Injection	

**13. Describe Proposed or Completed Operations**

ConocoPhillips wishes to P&A this well according to the attached procedures.

**RCVD JAN 5 '10  
OIL CONS. DIV.  
DIST. 3**

**14. I hereby certify that the foregoing is true and correct.**

Signed Rhonda Rogers Rhonda Rogers Title Staff Regulatory Technician Date 12/14/2009

(This space for Federal or State Office use)

APPROVED BY Original Signed: Stephen Mason Title \_\_\_\_\_ Date JAN 01 2010

**CONDITION OF APPROVAL, if any:**

Title 18 U.S.C. Section 1001, makes it a crime for any person knowingly and willfully to make any department or agency of the United States any false, fictitious or fraudulent statements or representations as to any matter within its jurisdiction.

*see added plug bf*

**NMOCD**

*Bf*

**Notify NMOCD 24 hrs  
prior to beginning  
operations**

**ConocoPhillips**  
**JICARILLA 30 6**  
**Plug and Abandon**

Lat 36° 22' 8.508" N

Long 107° 16' 25.464" W

**PROCEDURE**

**Note: All cement volumes use 100% excess outside pipe and 50' excess inside. The stabilizing wellbore fluid will be 8.3 ppg, sufficient to balance all exposed formation pressures. All cement will be Class B, mixed at 15.6 ppg with a 1.18 cf/sx yield.**

1. This project requires a NMOCD C-144 CLEZ Closed-Loop System Permit for the use of a steel tank to handle waste fluids circulated from the well and cement wash up.

2. Install and test location rig anchors. Comply with all NMOCD, BLM, and COPC safety and environmental regulations. MOL and RU daylight pulling unit. Conduct safety meeting for all personnel on location. Record casing, tubing and bradenhead pressures. NU relief line and blow down well. Kill well with water as necessary. ND wellhead and NU BOP. Function test BOP.

3. Rods: Yes ☐, No ☒, Unknown ☐  
Tubing: Yes ☒, No ☐, Unknown ☐, Size 2-3/8", Length 7322'  
Packer: Yes ☐, No ☒, Unknown ☐, Type ☐  
If well has rods or a packer, then modify the work sequence in Step #2 as appropriate.

4. Plug 1: TIH and set 4-1/2" cement retainer @ 7224'. Load casing with water and circulate well clean. Mix and pump 12 sx Class B cement inside casing to cover the Dakota top. PUH and WOC. TIH and tag cement @ 7124' or higher. TOOH with tubing.

5. Plug 2: TIH and set 4-1/2" cement retainer @ 6412'. Mix and pump ~~12~~ <sup>6021</sup> sx Class B cement inside casing to cover the Gallup top. PUH and WOC. TIH and tag cement @ ~~6342'~~ <sup>6021</sup> or higher.

6. Plug 3: PUH to 4814'. Mix and pump 20 sx Class B cement inside casing to cover the Mesaverde top. Excess cement is to ensure that formation top is covered even if there is fluid leak off into the casing hole from 5385'-5422'. PUH and WOC. TIH and tag cement @ 4714' or higher.

*Chacra Plug 3014-3919*

7. Plug 4: PUH to 3142'. Mix and pump 25 sx Class B cement inside casing to cover the Pictured Cliffs top through the Fruitland top. Note: For this and the following plugs WOC and tagging cement should not be necessary. On October 1, 2009 rig work identified a hole in casing from 255'-286' and a hole in casing from 5385'-5422'. The remain casing was tested to 500# with no pressure loss.

8. Plug 5: Perforate 3 HSC holes at 2810'. Note: 2830' is 50' below the Kirtland top, but TOC is @ 2826'; therefore, to ensure that the perforations are not shot into cemented pipe, it is recommended to perforate at 2810'. Establish an injection rate into squeeze holes. TIH and set 4-1/2" cement retainer @ 2780'. Mix and pump ~~71~~ <sup>1320</sup> sx Class B cement, squeeze ~~50~~ <sup>1320</sup> sx cement outside 4-1/2" casing and leave ~~15~~ <sup>1320</sup> sx cement inside casing to cover the Kirtland top through the Ojo Alamo top. TOOH with tubing. *Br. top of plug to 2538'*

9. Plug 6: Perforate 3 HSC holes at ~~1250'~~ <sup>1320</sup>. Establish an injection rate into squeeze holes. TIH and set 4-1/2" cement retainer @ ~~1200'~~ <sup>1320</sup>. Mix and pump 50 sx Class B cement, squeeze 39 sx cement outside 4-1/2" casing and leave 11 sx cement inside casing to cover the Nacimiento top.

10. Plug 7: PUH to 300'. Mix and pump 20 sx Class B cement inside casing to cover to surface. TOOH and LD tubing.

11. ND BOP and cut off wellhead below surface casing flange. Install P&A marker with cement to comply with regulations. RD, move off location, cut off anchors and restore location per BLM stipulations.

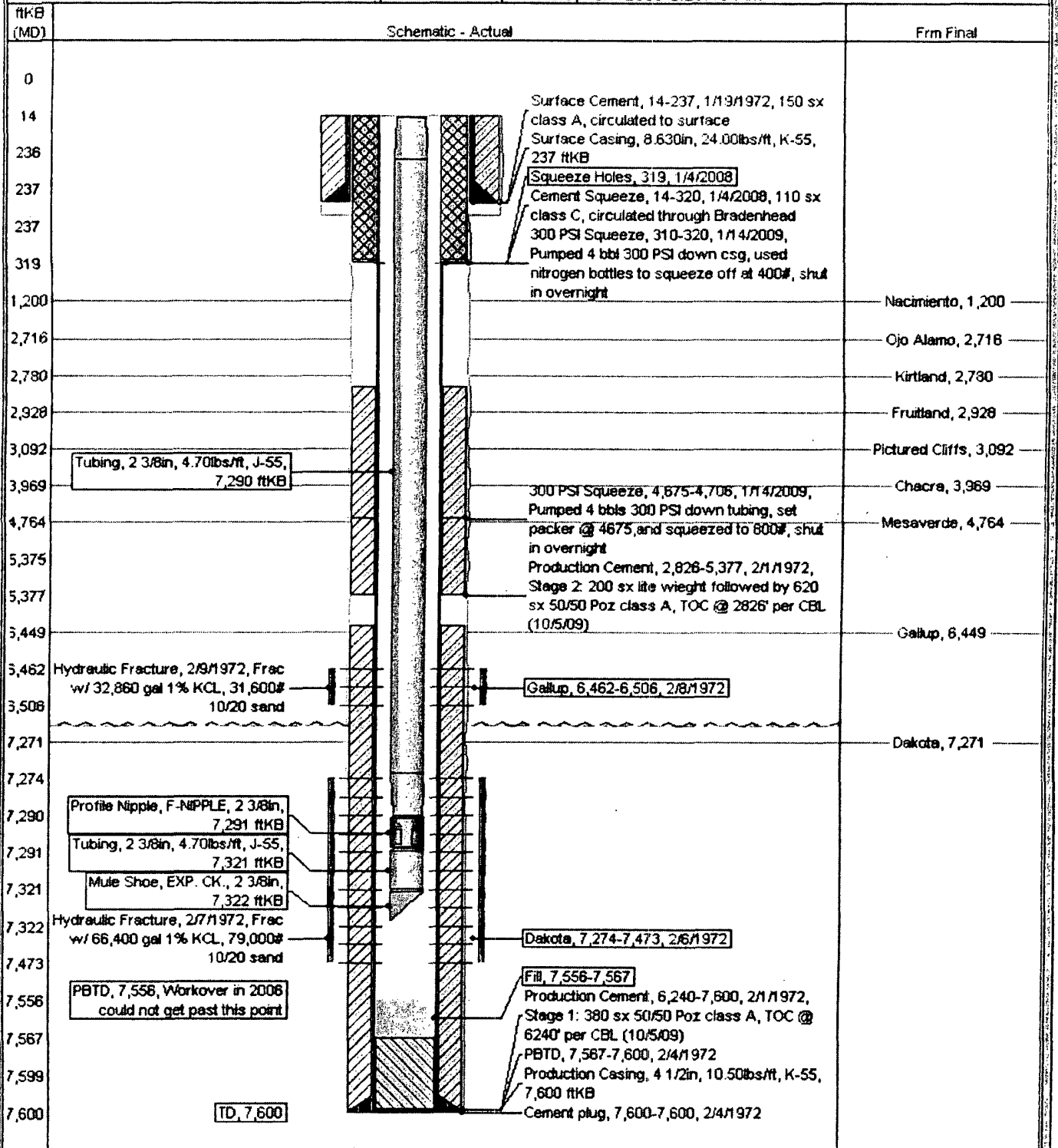
# Current Schematic

ConocoPhillips

Well Name: JICARILLA 30 #6

API/ UPR	Service Legal Location	Field Name	License No.	State/Province	Well Configuration Type	Edit
3003920461	NMPM-25N-04VV-29-J	GLDK COM		NEW MEXICO	Vertical	
Ground Elevation (ft)	Original K/B/T Elevation (ft)	K/B Ground Distance (ft)	K/B-Casing Flange Distance (ft)	K/B-Tong Hanger Distance (ft)		
6,903.00	6,917.00	14.00	6,917.00	6,917.00		

Well Config: Vertical - Original Hole, 10/7/2009 6:29:19 AM



# Proposed P&A

ConocoPhillips

Well Name: JICARILLA 30 #6

API/Unit 3003920461	Surface Legal Location NMPM-25N-04W-29-J	Field Name GL/DK COM	License No.	State/Province NEW MEXICO	Well Configuration Type Vertical	Edt
Ground Elevation (ft) 6,903.00	Original P&RT Elevation (ft) 6,917.00	VB-Ground Distance (ft) 14.00	VB-Casing Flange Distance (ft) 6,917.00	VB-Tubing Hanger Distance (ft) 6,917.00		

Well Config: Vertical - Original Hole, 10/22/2009 6:44:26 AM

ftKB (MD)	Schematic - Actual	From Final
0	Surface Cement, 14-237, 1/19/1972, 150 sx class A, circulated to surface	
14	Surface Casing, 8.630in, 24.00lbs/ft, K-55, 237 ftKB	
238	Plug 7: 14-300, 10/8/2009, Class B cement, 20 sx	
237	Squeeze Holes, 319, 1/4/2008	
237	Cement Squeeze, 14-320, 1/4/2008, 110 sx class C, circulated through Bradenhead	
319	300 PSI Squeeze, 310-320, 1/14/2009, Pumped 4 bbl 300 PSI down csg, used nitrogen bottles to squeeze off at 400#, shut in overnight	Nacimiento, 1,200
1,200	Cement Retainer, 1,200-1,202	
1,202	Plug 6: 1,150-1,250, 10/8/2009, Class B cement, 50 sx, 39sx outside casing, 11 sx inside casing	Ojo Alamo, 2,716
2,716	Casing cement, 1,150-1,250, 10/8/2009	
2,780	Cement Retainer, 2,780-2,782	Kirtland, 2,780
2,782	Plug 5: 2,666-2,810, 10/8/2009, Class B cement, 71 sx, 58 sx outside casing, 15 sx inside casing	Frutland, 2,928
2,928	Plug 5: 2,666-2,810, 10/8/2009	
3,092	Plug 4: 2,878-3,142, 10/8/2009, Class B cement, 25 sx	Pictured Cliffs, 3,092
3,969	300 PSI Squeeze, 4,675-4,708, 1/14/2009, Pumped 4 bbls 300 PSI down tubing, set packer @ 4675, and squeezed to 800#, shut in overnight	Chacra, 3,969
4,764	Plug 3: 4,714-4,814, 10/8/2009, Class B cement, 20 sx	Mesaverde, 4,764
5,375	Production Cement, 2,828-5,377, 2/1/1972, Stage 2: 200 sx lite weight followed by 620 sx 50/50 Poz class A, TOC @ 2828' per CBL (10/5/09)	
5,377	Plug 2: 6,312-6,412, 10/8/2009, Class B cement, 12 sx	Gallup, 6,449
6,412	Cement Retainer, 6,412-6,414	
6,414	Gallup, 6,462-6,508, 2/6/1972	
6,449	Plug 1: 7,124-7,224, 10/8/2009, Class B cement, 12 sx	
6,462	Cement Retainer, 7,224-7,226	
6,508		
7,224		
7,226		
7,271		Dakota, 7,271
7,274	Hydraulic Fracture, 2/7/1972, Frac w/ 66,400 gal 1% KCL, 79,000# 10/20 sand	
7,473	Dakota, 7,274-7,473, 2/6/1972	
7,556	Fill, 7,556-7,587	
7,587	Production Cement, 6,240-7,600, 2/1/1972, Stage 1: 380 sx 50/50 Poz class A, TOC @ 6240' per CBL (10/5/09)	
7,599	PBTD, 7,567-7,600, 2/4/1972	
7,600	Production Casing, 4 1/2in, 10.50lbs/ft, K-55, 7,600 ftKB	
	Cement plug, 7,600-7,600, 2/4/1972	
	PBTD, 7,556, Workover in 2006 could not get past this point	
	TD, 7,600	

The Jicarilla Apache Nation requires 45 days to evaluate this well beginning from  
\* 10/28/09 in order to determine if they would like to assume ownership of the  
well. If the Jicarilla Apache Nation has not contacted your office before the end of the 45  
days you may proceed with plugging operations.

\* Per 10/16/09 Sundry Notice.

**UNITED STATES DEPARTMENT OF THE INTERIOR  
BUREAU OF LAND MANAGEMENT  
FARMINGTON DISTRICT OFFICE  
1235 LA PLATA HIGHWAY  
FARMINGTON, NEW MEXICO 87401**

Attachment to notice of  
Intention to Abandon:

Re: Permanent Abandonment  
Well: 6 Jicarilla 30

**CONDITIONS OF APPROVAL**

1. Plugging operations authorized are subject to the attached "General Requirements for Permanent Abandonment of Wells on Federal and Indian Lease."

2. Farmington Office is to be notified at least 24 hours before the plugging operations commence (505) 599-8907.

3. The following modifications to your plugging program are to be made:

- a) Bring the top of the Gallup plug to 6021'.
- b) Bring the top of the Kirtland/Ojo Alamo plug to 2538' inside and outside the 4 ½" casing.
- c) Place the Nacimiento plug from 1320' – 1220' inside and outside the 4 ½" casing.

You are also required to place cement excesses per 4.2 and 4.4 of the attached General Requirements.

Office Hours: 7:45 a.m. to 4:30 p.m.