

RECEIVED

FORM APPROVED
OMB No 1004-0137
Expires July 31, 2010

UNITED STATES
DEPARTMENT OF THE INTERIOR
BUREAU OF LAND MANAGEMENT

SEP 25 2009

APPLICATION FOR PERMIT TO DRILL OR REENTER

5 Lease Serial No
NMSF 078878

6 If Indian, Allottee or Tribe Name

1a. Type of work. ☒ DRILL ☐ REENTER

1b Type of Well: ☐ Oil Well ☒ Gas Well ☐ Other ☒ Single Zone ☐ Multiple Zone

2 Name of Operator
Huntington Energy, L.L.C.

3a. Address 908 N.W. 71st St.
Oklahoma City, OK 73116

3b Phone No. (include area code)
(405) 840-9876

7 If Unit or CA Agreement, Name and No.
Canyon Largo Unit

8 Lease Name and Well No
Canyon Largo Unit #501

9 API Well No.
3003930811

10 Field and Pool, or Exploratory
Basin Dakota

4. Location of Well (Report location clearly and in accordance with any State requirements *)

At surface Lot C, 1130' FNL & 1431' FWL

At proposed prod zone

11 Sec., T. R. M. or Blk and Survey or Area
Sec 28, T25N-R7W

14 Distance in miles and direction from nearest town or post office*
35 miles SE from Blanco

12 County or Parish
Rio Arriba

13 State
NM

15 Distance from proposed*
location to nearest
property or lease line, ft
(Also to nearest drig. unit line, if any)

1130'

16 No of acres in lease
2560.00

17 Spacing Unit dedicated to this well
320

18 Distance from proposed location*
to nearest well, drilling, completed,
applied for, on this lease, ft

N/A

19 Proposed Depth
7000' MD

20 BLM/BIA Bond No. on file
NMB000076

21 Elevations (Show whether DF, KDB, RT, GL, etc.)
6556' GL

22 Approximate date work will start*
March 2010

23. Estimated duration
approx 30 days

24. Attachments

RCVD MAR 2 '10
OIL CONS. DIV.

The following, completed in accordance with the requirements of Onshore Oil and Gas Order No.1, must be attached to this form

1. Well plat certified by a registered surveyor.

2. A Drilling Plan.

3. A Surface Use Plan (if the location is on National Forest System Lands, the
SUPO must be filed with the appropriate Forest Service Office)

4. Bond to cover the operations unless covered by an existing bond on file (see
Item 20 above)

5. Operator certification

6. Such other site specific information and/or plans as may be required by the
BLM

DIST. 3

25 Signature Catherine Smith

Name (Printed/Typed)
Catherine Smith

Date
08/12/2009

Title

Huntington Energy, L.L.C., agent for Burlington Resources Oil and Gas Company, LP

Approved by (Signature)

Name (Printed/Typed)

Date

Title

Office

Application approval does not warrant or certify that the applicant holds legal or equitable title to those rights in the subject lease which would entitle the applicant to
conduct operations thereon.

Conditions of approval, if any, are attached.

Title 18 U.S.C. Section 1001 and Title 43 U.S.C. Section 1212, make it a crime for any person knowingly and willfully to make to any department or agency of the United
States any false, fictitious or fraudulent statements or representations as to any matter within its jurisdiction.

(Continued on page 2)

*(Instructions on page 2)

MAR 03 2010

AV

BLM'S APPROVAL OR ACCEPTANCE OF THIS
ACTION DOES NOT RELIEVE THE LESSEE AND
OPERATOR FROM OBTAINING ANY OTHER
AUTHORIZATION REQUIRED FOR OPERATIONS
ON FEDERAL AND INDIAN LANDS

NOTIFY AZTEC OCD 24 HRS.
PRIOR TO CASING & CEMENT

DRILLING OPERATIONS AUTHORIZED ARE
SUBJECT TO COMPLIANCE WITH ATTACHED
"GENERAL REQUIREMENTS".

NMOC

This action is subject to technical and
procedural review pursuant to 43 CFR 3165.9
and annual pursuant to 43 CFR 3165.4

DISTRICT I
P.O. Box 1980, Hobbs, N.M. 88241-1980

DISTRICT II
1301 W. Grand Avenue, Artesia, N.M. 88210

DISTRICT III
1000 Rio Brazos Rd., Aztec, N.M. 87410

DISTRICT IV
1220 South St. Francis Dr., Santa Fe, NM 87505

State of New Mexico
Energy, Minerals & Natural Resources Department

OIL CONSERVATION DIVISION

1220 South St. Francis Dr.
Santa Fe, NM 87504-2088

RECEIVED
SEP 25 2009
Bureau of Land Management
Farmington Field Office

Form C-102
Revised October 12, 2005
Instructions on back
Submit to Appropriate District Office
State Lease - 4 Copies
Fee Lease - 3 Copies

☐ AMENDED REPORT

WELL LOCATION AND ACREAGE DEDICATION PLAT

¹ API Number 30039-30811	² Pool Code 71599	³ Pool Name Basin Dakota
⁴ Property Code 32660	⁵ Property Name CANYON LARGO UNIT	⁶ Well Number 501
⁷ OGRID No. 208706	⁸ Operator Name HUNTINGTON ENERGY, LLC	⁹ Elevation 6556'

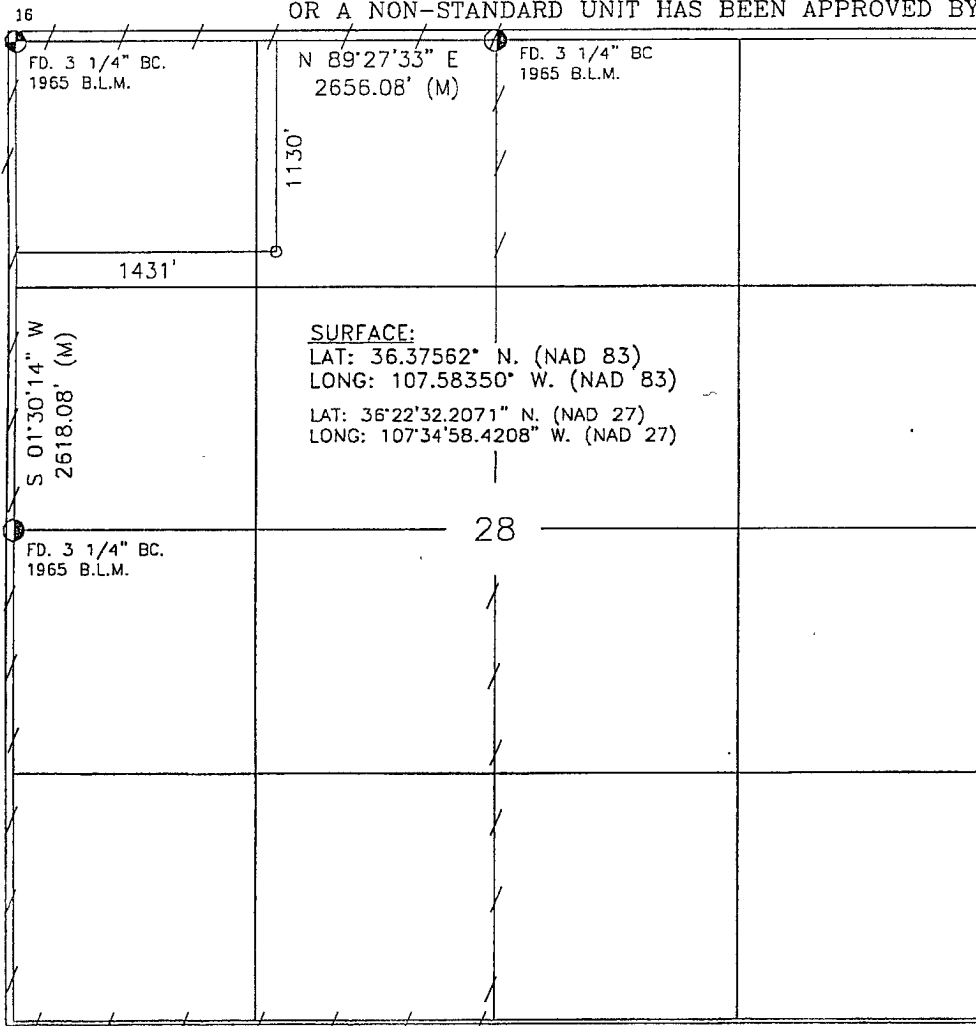
¹⁰ Surface Location

UL or lot no.	Section	Township	Range	Lot Idn	Feet from the	North/South line	Feet from the	East/West line	County
C	28	25-N	7-W		1130	NORTH	1431	WEST	RIO ARRIBA

¹¹ Bottom Hole Location If Different From Surface

UL or lot no.	Section	Township	Range	Lot Idn	Feet from the	North/South line	Feet from the	East/West line	County
¹² Dedicated Acres W-320					¹³ Joint or Infill		¹⁴ Consolidation Code		¹⁵ Order No.

NO ALLOWABLE WILL BE ASSIGNED TO THIS COMPLETION UNTIL ALL INTERESTS HAVE BEEN CONSOLIDATED
OR A NON-STANDARD UNIT HAS BEEN APPROVED BY THE DIVISION



17 OPERATOR CERTIFICATION

I hereby certify that the information contained herein is true and complete to the best of my knowledge and belief, and that this organization either owns a working interest or unleased mineral interest in the land including the proposed bottom hole location or has a right to drill this well at this location pursuant to a contract with an owner of such a mineral or working interest, or to a voluntary pooling agreement or a compulsory pooling order heretofore entered by the division.

Catherine Smith 8/12/09
Signature Date
Catherine Smith
Printed Name

18 SURVEYOR CERTIFICATION

I hereby certify that the well location shown on this plat was plotted from field notes of actual surveys made by me or under my supervision, and that the same is true and correct to the best of my knowledge and belief.

JUNE 15 2009
Date of Survey
Signature and Seal of Professional Surveyor:
8894
Certificate Number

OPERATIONS PLAN

Well Name: Canyon Largo Unit #501
Location: 1130' FNL, 1431' FWL, NENW, Lot C, Sec 28, T25N, R7W
Rio Arriba County, NM
Formation: Basin Dakota
Elevation: 6556' GL

<u>Formation Tops:</u>	<u>Measured Depth (Tops)</u>
San Jose	Surface
Fruitland	1934'
Picture Cliffs	2224'
Lewis Shale	2284'
Heurfanito Bentonite	2564'
Chacra	3034'
Menefee	3814'
Point Lookout	4454'
Mancos	4684'
Greenhorn	6434'
Graneros	6494'
Dakota	6524'
Cubero	6654'
OakCanyon	6734'
Burro Canyon	6754'
Morrison	6874'
TD	7000'

Logging Program:

Mud log – 4200' to TD
Open hole logs– PEX (interval to be determined)
Cased hole logs –CBL/GR – TD to 5800'
Cores & DST's – none

Mud Program:

<u>Interval</u>	<u>Type</u>	<u>Weight</u>	<u>Vis.</u>	<u>Fluid Loss</u>
0 – 320'	Spud	8.4-8.9	40-50	no control
320 – 7000'	LSND	8.4-9.0	40-60	8-12

Pit levels will be visually monitored to detect gain or loss of fluid control.

Casing Program:

<u>Hole Size</u>	<u>Depth Interval</u>	<u>Csg. Size</u>	<u>Wt.</u>	<u>Grade</u>
12 ¼"	0' – 320'	8 5/8"	24.0#	J-55
7 7/8"	0' – 7000'	4 ½"	11.6#	N-80

Tubing Program:

0' – 7000'	2 3/8"	4.7#	J-55
------------	--------	------	------

BOP Specifications, Wellhead and Tests:

Surface to TD –

11" 3000 psi minimum double gate BOP stack (Reference Figure #1). After nipple-up prior to drilling out surface casing, rams and casing will be tested to 600 psi for 30 minutes. Drilling Spool may or may not be employed.

2" nominal, 3000 psi minimum choke manifold (Reference Figure #2).

Completion Operations:

6" 3000 psi double gate BOP stack (Reference Figure #1). After nipple-up prior to completion, pipe rams and casing top will be tested to 3000 psi for 15 minutes.

Surface to Total Depth:

2" nominal, 3000 psi minimum choke manifold (Reference Figure #2).

Wellhead:

8 5/8" x 4 1/2" x 1 1/2" x 1 1/2" x 3000 psi tree assembly.

General:

- Pipe rams will be actuated once each day and blind rams will be actuated once each trip to test proper functioning.
- An upper Kelly cock valve with handle available and drill string valves to fit each drill string will be available on the rig floors at all times.
- A BOP pit level drill will be conducted weekly for each drilling crew.
- All of the BOP tests and drills will be recorded in the daily drilling reports.
- Blind and pipe rams will be equipped with extension hand wheels.

Cementing:

8 5/8" surface casing –

Cement to surface w/265 sx Class "B" cement w/3% calcium chloride and 1/4#/sx cellophane flakes (312 cu. ft. of slurry, 200% excess to circulate to surface).

WOC 8 hr. prior to drilling out surface casing. Test casing to 600 psi for 30 minutes.

Saw tooth guide shoe on bottom. Bowspring centralizers will be run in accordance with Onshore Order #2.

Production Casing – 4 1/2"

Lead with 700 sx 65/35 Standard Poz w/6% gel, 1/4# Flocele, 10# Gilsonite, 3/10% Halad 9, 1/10% HR5 (1.96 yld). Tail w/900 sx 50/50 Standard Poz w/35 Gel, 9/10% Halad9, 2/10% CFR 3, 5# Gilsonite, 1/4# Flocele (1.47 yld).

Alternate Two-stage cement job as follows:

First Stage: Cement to circulate to stage tool @ 5066'. Lead with 700 sx Class "G" 50/50 poz (13#, 1.47 yd) w/3% gel, 0.25 pps Celloflake, 5 pps Gilsonite, 0.25 pps Fluid loss, 0.15% dispersant, 0.1% retarder. WOC 4 hours prior to pumping second stage. (Slurry volume: 1029 cu. ft. Excess slurry: 50%). DV Tool at 5000 ft.

Second Stage: Cement to circulate to surface. Cement with 700 sx Class "G" (12#, 2.9yd) TXI Liteweight cement w/2.5% sodium metasilicate, 2% calcium chloride, 10 pps Gilsonite, 0.5 pps-Celloflake, 0.2% antifoam. WOC a minimum of 18 hours prior to cleanout. (Slurry volume: 1914 cu. ft. Excess slurry: 50%). Tail w/50 sx Class "B" w/1/4# Flocele (15.6#, 1.18 yd), (Slurry 59 cu. ft., Excess 50%).

Float shoe on bottom. Three centralizers run every other joint above shoe. Thirty-five centralizers - one every 4th joint to the base of the Ojo Alamo @ 2448'. Two turbolizing type centralizers – one below and one into the base of the Ojo Alamo @ 2448'. Standard centralizers thereafter every fourth joint up to the base of the surface pipe.

Note: If open hole logs are run, cement volumes will be based on 25% excess over caliper volumes.



CEMENT TEST REPORT
Halliburton Energy Services
Farmington District Laboratory
4109 E. Main
Farmington, NM 87499

To: Randy Snyder
Halliburton Energy Services

Company:
Mud Drilled
Total Depth: 400
BHST: 90 +/- deg F
BHCT: 80 +/- deg F

Report: FLMM4071
Date: 6-Feb-04

All tests performed according to modified API RP Spec 10, 1997

Slurry: Surface

Thickening Time:
2:50 to 70 BC

Free Water:
0.00%

Settling:
0.00%

Fluid Loss:
1158

Design

100% Standard Cement
2.00% CaCl₂
.25 #/sk Floccle

Surface Cement

Density: 15.6 lb/gal
Yield: 1.18 cuft/sk
Water: 5.24 gal/sk

265 SK

312 cuft

Compressive Strength

UCA @80 deg F (BHCT)- 3000 psi

Rheology

deg F	80	
600	67	
300	42	
200	34	
100	25	
60	21	
30	18	
6	12	
3	10	
PV	26	
YP	17	

psi	time
50	1:55:00
500	4:30:00
1285	10:03:00
1628	12:00:00
2580	24:00:00

Bill Loughridge

Senior Scientist

Note: This report is for information and the content is limited to the sample described. Halliburton Energy Services makes no warranties, express or implied, as to the accuracy of the contents or results. Any user of this report agrees Halliburton shall not be liable for any loss or damage, regardless of cause, including any act or omission of Halliburton, resulting from the use hereof.

THE ROAD TO EXCELLENCE STARTS WITH SAFETY

COMPANY	Huntington Engr. LLC	DATE	6/24/2005
COMPANY REP.	Ron Lackey	CO. REP. TELE. #	793-7063
CONTRACTOR	Patterson # 741	TOWN/STATE	NM
LEASE	Canyon Largo Unit	WELL NO.	#454
API NO.		COUNTY	Rio Arriba
R/T MILEAGE	150		

From Bloomfield south on hwy 550 approx 50 miles turn left next to the gas station in Counslors. Follow rig sig to loc

Casing		SIZE	WEIGHT	THREAD	GRADE
CASING:	4 1/2	11.6	8rd		
TUBING:					
HOLE:	7 7/8	WELL FLUID:	Mud	DISP FLUID:	
EQUIPMENT					
COND		SURF	INTER	LONG S (XXX)	SQUEEZE
LINER		PTA	PLG BCK	OTHER	
TOP PLUG	5 W	BOTTOM PLUG	BHCT	BHST	
PLUG CONTAINER	YES	SWADGE	YES	TD	7350'
EQUIPMENT TYPE					

Lead	SACKS	700	TYPE	65/35/Std/Poz	[Halliburton Lite]
	ADDITIVES	6% Gel - 1/4# Flocele - 10# Gilsonite - 3/10% Halad 9 - 1/10% HR 5			
	MIXED AT	12.4	LBS/GAL	YIELD	1.96
				WATER	9.46
				GAL/SK	
	SACKS		TYPE		
	ADDITIVES				
	MIXED AT		LBS/GAL	YIELD	
				WATER	
				GAL/SK	

Tail	SACKS	900	TYPE	50/50/Std/Poz	
	ADDITIVES	3% Gel - 9/10% Halad 9 - 2/10% CFR 3 - 5# Gilsonite - 1/4# Flocele			
	MIXED AT	13	LBS/GAL	YIELD	1.47
				WATER	6.37
				GAL/SK	
	SACKS		TYPE		
	ADDITIVES				
	MIXED AT		LBS/GAL	YIELD	
				WATER	
				GAL/SK	

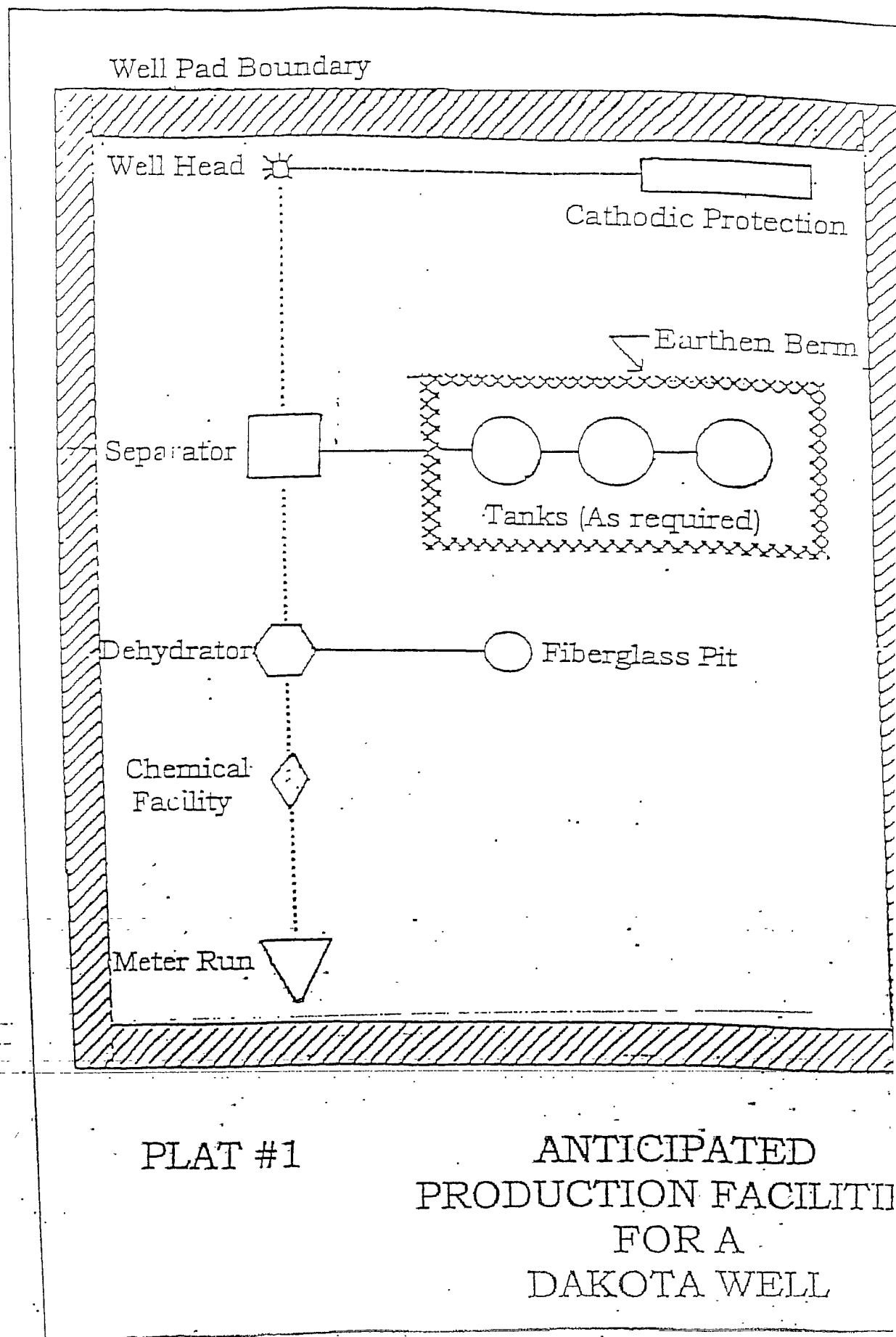
THIRD STAGE	SACKS		TYPE		
	ADDITIVES				
	MIXED AT		LBS/GAL	YIELD	
				WATER	
				GAL/SK	
	SACKS		TYPE		
	ADDITIVES				
	MIXED AT		LBS/GAL	YIELD	
				WATER	
				GAL/SK	

PREFLUSH:TYPE	30 Chem Wash 20 H2o	SPACER:TYPE	
---------------	---------------------	-------------	--

SEE TYPE EQUIPMENT

Casing Size: 4 1/2 Thread: 8rd	GUIDE SHOE		TYPE	
	FLOAT SHOE	1	TYPE	Trophy Seal- Auto
	FLOAT COLLAR	1	TYPE	Trophy Seal- Auto
	STAGE TOOL		TYPE	PINS
	CENTRALIZERS	23	TYPE	4 1/2X7 7/8
	WALL CLEANERS		TYPE	
	INSERT FLOAT		LIMIT CLAMPS	1
			WELD-A	1

REMARKS	IS CREDIT OK?	CREDIT CHECKED BY
	% DISCOUNT	SALES ORDER #
	ORDERED BY Ron Lackey	DATE/TIME OF CALL
	CALL TAKEN BY Gary Browne-Halliburton	TIME READY
	REVIEWED BY	CREW FROM
	TRACTOR	PICKUP
	CREW	MATERIALS FROM
		CREW CALLED @





DESIGNATION OF AGENT

Supervisor, Oil and Gas Operations:

The undersigned is, on the records of the Minerals Management Service, Unit Operator, hereafter referred to as "Operator", under the Canyon Largo Unit Agreement, Rio Arriba County, New Mexico No.: 14-08-001-1059 approved July 22, 1952 and hereby designates:

NAME: **Huntington Energy, L.L.C.**
ADDRESS: **908 N.W. 71st St.**
Oklahoma City, OK 73116

as its agent, with full authority to act in its behalf in complying with the terms of the Unit Agreement and regulations applicable thereto and on whom the supervisor or his representative may serve written or oral instructions in securing compliance with the Oil and Gas Operating Regulations with respect to drilling, testing and completing the unitized substances to a depth covering the top to the base of the Dakota formation for the following well:

CANYON LARGO UNIT # 501
NW/4 of Section 28, T25N, R7W
W/2 Dakota Formation
Rio Arriba County, New Mexico

It is understood that this Designation of Agent does not relieve the Operator of responsibility for compliance with the terms of the Unit Agreement and the Oil and Gas Operating Regulations. It is also understood that this Designation of Agent does not constitute an assignment of any interest under the Unit Agreement or any lease committed thereto.

In case of default on the part of the designated agent, the Operator will make full and prompt compliance with all regulations, lease terms, or orders of the Secretary of the Interior or his representatives.

The Operator agrees promptly to notify the oil and gas supervisor of any change in the designated agent.

This Designation of Agent is deemed to be temporary and in no manner a permanent arrangement.

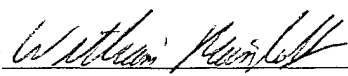
This Designation of Agent is limited to field operations only and does not cover administrative action, which shall require the specific authorization of the Operator.

This Designation of Agent shall be effective until the Canyon Largo Unit #501 has been drilled, completed and deemed commercial by the BLM. Operator shall track and submit commerciality analysis to the appropriate BLM authority. Once said well has been deemed commercial, Operator shall give Huntington Energy, L.L.C. notice thereof. Upon such notice, Huntington Energy, L.L.C shall ensure the well and related facilities, including telemetry, meet Operator's requirements, as previously provided to Huntington Energy L.L.C., and thereafter Operator will assume operations for the well the first of the month subsequent to the well being deemed commercial.

This Designation of Agent is also subject to the terms and conditions contained in Exhibit "A" attached hereto.

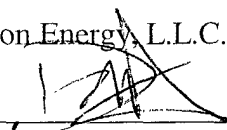
Burlington Resources Oil & Gas Company LP
By: BROG GP Inc., its sole General Partner,
As Canyon Largo Unit Operator

6/24/09
Date

By:  ^{WRB}
William Rainbolt
Attorney-in-Fact

Huntington Energy, L.L.C.

6/30/09
Date

By: 
David M. Herritt, Member

HUNTINGTON ENERGY, L.L.C.
CANYON LARGO UNIT
RIO ARRIBA CO., NM

BOP STACK - 3000 PSI

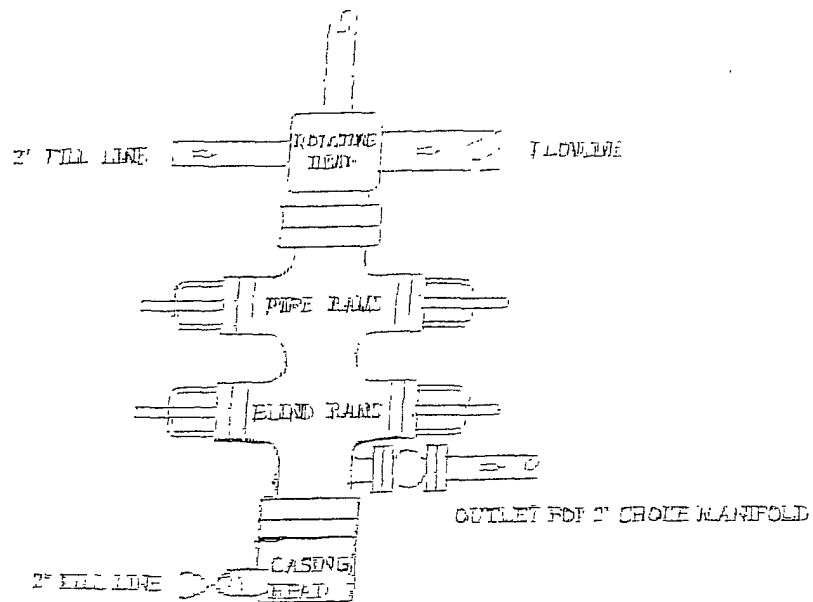


FIGURE 1

CHOKER MANIFOLD - 3000 PSI

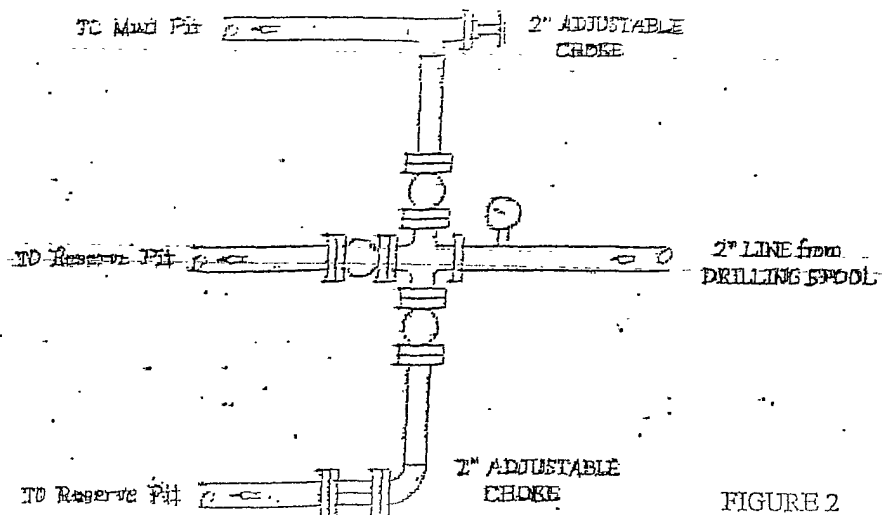


FIGURE 2