

UNITED STATES  
DEPARTMENT OF THE INTERIOR  
BUREAU OF LAND MANAGEMENT  
**APPLICATION FOR PERMIT TO DRILL OR REENTER**

FORM APPROVED  
OMB No 1004-0137  
Expires March 31, 2007

1a. Type of work: <input checked="" type="checkbox"/> DRILL <input type="checkbox"/> REENTER		5. Lease Serial No. NM 060402A	
1b. Type of Well: <input type="checkbox"/> Oil Well <input checked="" type="checkbox"/> Gas Well <input type="checkbox"/> Other <input checked="" type="checkbox"/> Single Zone <input type="checkbox"/> Multiple Zone		6. If Indian, Allottee or Tribe Name NAVAJO	
2. Name of Operator ROCANVILLE CORPORATION, INC.		7. If Unit or CA Agreement, Name and No	
3a. Address c/o Dean C. Collins 4201 Terrace Drive, Farmington, NM 87402		8. Lease Name and Well No. FAIRFIELD #4	
3b. Phone No. (include area code) (505) 320-6425		9. API Well No. 30-045-34097	
4. Location of Well (Report location clearly and in accordance with any State requirements.) At surface 2230' FNL, 910' FEL, Sec 14, T27N, R13W, NMPM At proposed prod. zone 1930' FNL, 910' FEL, Sec 14, T27N, R13W, NMPM		10. Field and Pool, or Exploratory BASIN DAKOTA	
14. Distance in miles and direction from nearest town or post office* 10 mile South of Farmington, NM		11. Sec., T. R. M. or Blk. and Survey or Area H Sec 14, T27N, R13W, NMPM	
15. Distance from proposed* location to nearest property or lease line, ft. (Also to nearest drig. unit line, if any) 910'		12. County or Parish San Juan Co	13. State NM
16. No. of acres in lease 320		17. Spacing Unit dedicated to this well 320	
18. Distance from proposed location* to nearest well, drilling, completed, applied for, on this lease, ft. 1133'		20. BLM/BIA Bond No. on file NM1103	
21. Elevations (Show whether DF, KDB, RT, GL, etc.) 5874' GL		22. Approximate date work will start* 23. Estimated duration 25 days	

24. Attachments

The following, completed in accordance with the requirements of Onshore Oil and Gas Order No.1, must be attached to this form:

- Well plat certified by a registered surveyor NM Form C102
- A Drilling Plan. EXHIBIT "A"
- A Surface Use Plan (if the location is on National Forest System Lands, the SUPO must be filed with the appropriate Forest Service Office). EXHIBIT "C"
- Bond to cover the operations unless covered by an existing bond on file (see item 20 above).
- Operator certification
- Such other site specific information and/or plans as may be required by the BLM. ENVIRONMENTAL ASS & ARC SURVEY SUBMITTED SEPARATELY

25. Signature *Dean C. Collins* Name (Printed/Typed) Dean C. Collins Date 12/05/2006  
Title Agent

Approved by (Signature) *D. Mantecor* Name (Printed/Typed) Date 1/15/2010  
Title AFM Office FFO

Application approval does not warrant or certify that the applicant holds legal or equitable title to those rights in the subject lease which would entitle the applicant to conduct operations thereon.  
Conditions of approval, if any, are attached.

Title 18 U.S.C. Section 1001 and Title 43 U.S.C. Section 1212, make it a crime for any person knowingly and willfully to make to any department or agency of the United States any false, fictitious or fraudulent statements or representations as to any matter within its jurisdiction.

\*(Instructions on page 2)

NOTIFY AZTEC CCD 24 HRS.  
PRIOR TO CASING & CEMENT

DRILLING OPERATIONS AUTHORIZED ARE  
SUBJECT TO COMPLIANCE WITH ATTACHED  
"GENERAL REQUIREMENTS".

This action is subject to technical and  
procedural review pursuant to 43 CFR 3166.3  
and appeal pursuant to 43 CFR 3165.4

Hold C104

for Directional Survey  
and "As Drilled" plat

MAR 1 1 2010

A COMPLETE C-144 MUST BE SUBMITTED TO AND  
APPROVED BY THE NMOCD FOR: A PIT, CLOSED  
LOOP SYSTEM, BELOW GRADE TANK, OR  
PROPOSED ALTERNATIVE METHOD, PURSUANT TO  
NMOCD PART 19.15.17, PRIOR TO THE USE OR  
CONSTRUCTION OF THE ABOVE APPLICATIONS.

NMOCD

**District I**

1625 N. French Dr., Hobbs, NM 88240

**District II**

1301 W. Grand Avenue, Artesia, NM 88210

**District III**

1000 Rio Brazos Rd., Aztec, NM 87410

**District IV**

1220 S. St. Francis Dr., Santa Fe, NM 87505

## State of New Mexico

Energy, Minerals &amp; Natural Resources Department

## OIL CONSERVATION DIVISION

1220 South St. Francis Dr.

Santa Fe, NM 87505

Form C-102

Revised June 10, 2003

Submit to Appropriate District Office

State Lease - 4 Copies

Fee Lease - 3 Copies

☐ AMENDED REPORT

## WELL LOCATION AND ACREAGE DEDICATION PLAT

<sup>1</sup> API Number		<sup>2</sup> Pool Code 71599		<sup>3</sup> Pool Name RECEIVED BASIN DAKOTA	
<sup>4</sup> Property Code 302914 9667		<sup>5</sup> Property Name FAIRFIELD		<sup>6</sup> Well Number 4	
<sup>7</sup> OGRID No. 19528		<sup>8</sup> Operator Name ROCANVILLE CORPORATION		<sup>9</sup> Elevation 5874'	

<sup>10</sup> Surface Location

UL or lot no.	Section	Township	Range	Lot Idn	Feet from the	North/South line	Feet from the	East/West line	County
H	14	27N	13W		2230	NORTH	910	EAST	SAN JUAN

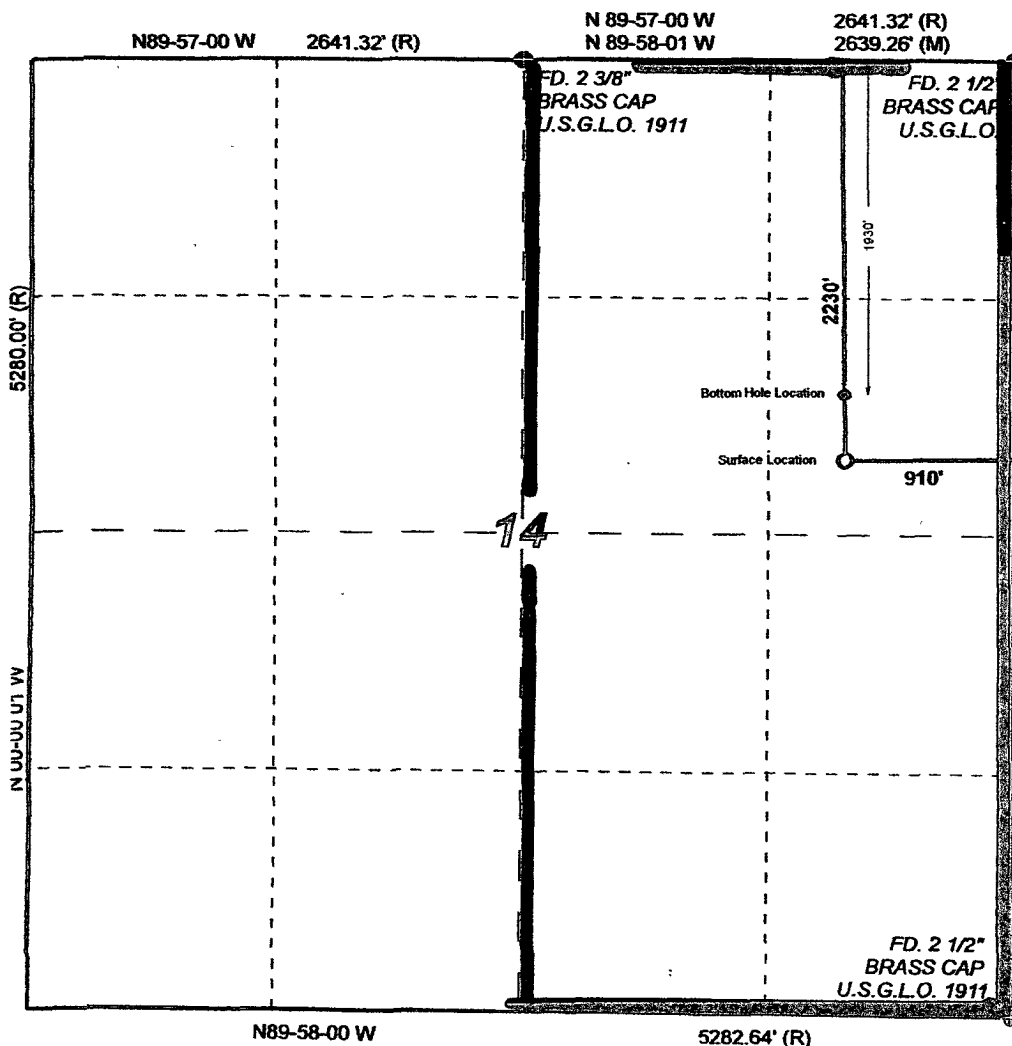
<sup>11</sup> Bottom Hole Location If Different From Surface

UL or lot no.	Section	Township	Range	Lot Idn	Feet from the	North/South line	Feet from the	East/West line	County
H	14	27N	13W		1930	NORTH	910	EAST	SAN JUAN

<sup>12</sup> Dedicated Acres 320.00	<sup>13</sup> Joint or Infill	<sup>14</sup> Consolidation Code	<sup>15</sup> Order No.
---	-------------------------------	----------------------------------	-------------------------

RCVD MAR 10 '10  
OIL CONS. DIV.

NO ALLOWABLE WILL BE ASSIGNED TO THIS COMPLETION UNTIL ALL INTERESTS HAVE BEEN CONSOLIDATED OR A NON-STANDARD UNIT HAS BEEN APPROVED BY THE DIVISION



<sup>17</sup> OPERATOR CERTIFICATION	
I hereby certify that the information contained herein is true and complete to the best of my knowledge and belief.	
<i>Dean C. Collins</i>	
Signature	
Dean C. Collins	
Printed Name	
Agent/collinsd@zianet.com	
Title and E-mail Address	
12/05/2006	
Date	
<sup>18</sup> SURVEYOR CERTIFICATION	
I hereby certify that the well location shown on this plat was plotted from field notes of actual surveys made by me or under my supervision, and that the same is true and correct to the best of my belief.	
12/05/2006	
Date of Survey	
<i>DAVID L. JOHNSON</i>	
Signature and Seal of Professional Surveyor	
NM #14827	
Certificate Number	

**District I**

1625 N. French Dr., Hobbs, NM 88240

**District II**

1301 W. Grand Avenue, Artesia, NM 88210

**District III**

1000 Rio Brazos Rd., Aztec, NM 87410

**District IV**

1220 S. St. Francis Dr., Santa Fe, NM 87505

State of New Mexico  
Energy, Minerals & Natural Resources Department  
**OIL CONSERVATION DIVISION**  
1220 South St. Francis Dr.  
Santa Fe, NM 87505

Form C-102

Revised October 15, 2009

Submit one copy to appropriate

District Office

☐ AMENDED REPORT**WELL LOCATION AND ACREAGE DEDICATION PLAT**

1 API Number 30-045-34097		2 Pool Code 71599		3 Pool Name Basin Dakota	
4 Property Code 9667		5 Property Name Fairfield			6 Well Number 4
7 OGRID No. 19528		8 Operator Name Rocanville Corporation			9 Elevation 5874

**10 Surface Location**

UL or lot no.	Section	Township	Range	Lot Idn	Feet from the	North/South line	Feet from the	East/West line	County
H	14	27N	13W		2230	North	910	East	San Juan

**11 Bottom Hole Location If Different From Surface**

UL or lot no.	Section	Township	Range	Lot Idn	Feet from the	North/South line	Feet from the	East/West line	County
H	14	27N	13W		1930	North	910	East	San Juan

12 Dedicated Acres 320.00	13 Joint or Infill	14 Consolidation Code	15 Order No.
------------------------------	--------------------	-----------------------	--------------

RCVD MAR 10 '10  
OIL CONS. DIV.

**DIST. 3**

No allowable will be assigned to this completion until all interests have been consolidated or a non-standard unit has been approved by the division.

<p>N 89-57-00 W 2641.32' (R)</p> <p>N 89-58-01 W 2639.26' (M)</p> <p>FD. 2 3/8" BRASS CAP U.S.G.L.O. 1911</p> <p>FD. 2 1/2" BRASS CAP U.S.G.L.O.</p> <p>Bottom Hole Location</p> <p>Surface Location</p> <p>910'</p> <p>2230'</p> <p>1930'</p> <p>5280.00' (R)</p> <p>5281.82' (M)</p> <p>5280.00' (R)</p> <p>5282.64' (R)</p> <p>N 89-58-00 W</p> <p>N 89-57-00 W</p> <p>N 89-58-01 W</p> <p>N 89-57-00 W</p> <p>5280.00' (R)</p> <p>5281.82' (M)</p> <p>5280.00' (R)</p> <p>5282.64' (R)</p> <p>FD. 2 1/2" BRASS CAP U.S.G.L.O. 1911</p>		<p><b>17 OPERATOR CERTIFICATION</b></p> <p>I hereby certify that the information contained herein is true and complete to the best of my knowledge and belief, and that this organization either owns a working interest or unleased mineral interest in the land including the proposed bottom hole location or has a right to drill this well at this location pursuant to a contract with an owner of such a mineral or working interest, or to a voluntary pooling agreement or a compulsory pooling order heretofore entered by the division.</p> <p><i>Dean C. Collins</i> 3/8/2010 Signature Date</p> <p>Dean C. Collins Printed Name</p> <p><b>18 SURVEYOR CERTIFICATION</b></p> <p>I hereby certify that the well location shown on this plat was plotted from field notes of actual surveys made by me or under my supervision, and that the same is true and correct to the best of my belief.</p> <p>Date of Survey 12-06-2005</p> <p>Signature and Seal of Professional Surveyor: David A. Johnson</p> <p>14827 Certificate Number</p>
--	--	---

EXHIBIT "A"

DRILLING PLAN

Rocanville Corporation  
Fairfield No. 4  
2230' FNL & 910' FEL, Sec. 14 , 27N, 13W  
San Juan County, New Mexico  
Lease No. NM – 060402A

1. The Geological Surface Formation is: Nacimiento
2. The Estimated Tops of Important Geological Markers:

Ojo Alamo	450'
Fruitland	1450'
Pictured Cliffs	1650'
Point Lookout	3900'
Greenhorn	5800'
Dakota	5900'
TD	6300'

3. Estimated Depths and pressures of Anticipated Water, Oil Gas or Minerals:

Substance	Formation	Depth	Pressure
Water	Ojo Alamo	450'	195
Gas	Fruitland	1450'	630
Water	Pictured Cliffs	1650'	715
Water	Mesa Verde	2200'	950
Gas	Dakota	5900'	1000-1500

4. The proposed casing program will be as follows:

Depth	Hole Size	O.D.	Weight	Grade	Type	New/Used
0-320'	12-1/4"	8-5/8"	24#	J-55	ST&C	New
0-6300'	7-7/8"	4-1/2"	11.6#	K-55	LT&C	New

The proposed cement program will be as follows:

**Surface:** 225 sacks Class G with 2% CaCl  
and 1/4# per sack cellophane flakes.

VOLUME CALCULATIONS

YIELD 1.16 320 ft x 0.4127 cu-ft/ft with 100% excess = 261 cu-ft

**Production:** Cement will be run in two stages with a stage tool set  
at approximately 2800'.

**1<sup>st</sup> stage** Cement through shoe at approximately 6300' with 640 sacks  
65/35 poz with 12 #/sack Kolseal and 12% gel plus 1/4# per sack  
cellophane and 0.2% antifoam agent followed by 100 sacks Class  
G with 2% CaCl plus 1/4# sack cellophane flakes and 0.2%  
antifoam agent.

VOLUME CALCULATIONS

640 sx x 2.32 yield = 1485 cu-ft; 100 sx x 1.16 yield = 116 cu-ft; Total = 1601 cu-ft  
Annular volume 3500' x 0.2278 cu-ft/ft = 797 cu-ft: 1601/797 = 201% excess.

## EXHIBIT "A"

### DRILLING PLAN

Rocanville Corporation  
Fairfield No. 4  
2230' FNL & 910' FEL, Sec. 14 , 27N, 13W  
San Juan County, New Mexico  
Lease No. NM – 060402A

**2<sup>nd</sup> stage** Cement through stage tool at approximately 2800' with 500 sacks 65/35 poz with 12 #/sack Kolseal and 12% gel plus 1/4# per sack cellophane and 0.2% antifoam agent followed by 100 sacks Class G with 2% CaCl plus 1/4# sack cellophane flakes and 0.2% antifoam agent.

#### VOLUME CALCULATIONS

500 sx x 2.32 yield = 1160 cu-ft; 100 sx x 1.16 yield = 116 cu-ft; Total = 1276 cu-ft  
Annular volume 2800' x 0.2278 cu-ft/ft = 638 cu-ft: 1276/638 = 200 % excess.

#### 5. Operator's Minimum Specifications for Pressure Control:

EXHIBIT "B" is a schematic of a 2M blowout preventer system. The BOP's will be hydraulically tested prior to drilling out from under surface casing and operational checks will be made daily thereafter and recorded in the drilling tour report. Accessories to the BOP will include the following:

- A. 2" minimum kill line and valve
- B. Choke line and valve
- C. 2 chokes
- D. Upper Kelly cock valve with handle
- E. Safety valve and subs to fit all drill strings
- F. Pressure guage on choke manifold
- G. 2" minimum choke line
- H. Fill-up line above uppermost preventer

#### 6. The type and Characteristics of the Proposed Circulating Muds:

Mud system will be gel-chemical with adequate stocks of absorbent agents On location to handle possible spills of fuel and oil on the surface. Heavier muds will be on location to be added if pressure requires.

Interval	Mud Wt	Vis	Fluid Loss	pH	Additives
0-320	9.0	50	----	8	Lime
320-TD	9.0	34-40	5cc	9	Chemicals

#### 7. Auxiliary equipment to be used are as follows:

- a. Float valve above bit
- b. Monitoring of mud system will be visual
- c. A sub with a full opening valve will be on the floor when the Kelly is not in use

#### 8. Testing, logging and coring will be as follows:

- a. Cores – none will be taken
- b. Drill stem tests – none anticipated
- c. Logging – GR-FDC-CNL, DIL, SP if hole conditions permit, otherwise cased hole Spectra log

**EXHIBIT "A"**

**DRILLING PLAN**

Rocanville Corporation  
Fairfield No. 4  
2230' FNL & 910' FEL, Sec. 14 , 27N, 13W  
San Juan County, New Mexico  
Lease No. NM – 060402A

**9. Anticipated Abnormal Pressures and Temperatures:**

No abnormal pressure, temperature or hydrogen sulfide gases are anticipated during the course of drilling to TD. The maximum bottom hole pressure to be expected is 1500 psi.

**10. Anticipated Starting Date and Duration of Operations:**

The anticipated starting date is set for April 1, 2007, or as soon as possible after examination and approval of drilling requirements. Operations should be completed within 25 days.

# Rocanville Corporation, Inc

## Well Control Equipment Schematic for 2M Service

Attachment to Drilling Technical Program

EXHIBIT "B"

### Typical BOP setup

Location: San Juan Basin, New Mexico

Date: August 20, 2001

By: John Thompson (Walsh E&P)

