

DISTRICT I  
1625 N French Dr., Hobbs, N.M. 88240

DISTRICT II  
1301 W. Grand Avenue, Artesia, N.M. 88210

DISTRICT III  
1000 Rio Brazos Rd., Aztec, N.M. 87410

DISTRICT IV  
1220 S St Francis Dr., Santa Fe, N.M. 87505

State of New Mexico  
Energy, Minerals & Natural Resources Department

OIL CONSERVATION DIVISION  
1220 South St. Francis Dr.  
Santa Fe, N.M. 87505

Form C-102  
Revised October 12, 2005

Submit to Appropriate District Office  
State Lease - 4 Copies  
Fee Lease - 3 Copies

"AS DRILLED"

AMENDED REPORT

WELL LOCATION AND ACREAGE DEDICATION PLAT

<sup>1</sup> API Number 30-045-35030		<sup>2</sup> Pool Code 71629		<sup>3</sup> Pool Name FRUITLAND COAL	
<sup>4</sup> Property Code 35977		<sup>5</sup> Property Name LABOR		<sup>6</sup> Well Number 21H	
<sup>7</sup> OGRID No. 5380		<sup>8</sup> Operator Name XTO ENERGY, INC.		<sup>9</sup> Elevation 6614	

<sup>10</sup> Surface Location

UL or lot no.	Section	Township	Range	Lot Idn	Feet from the	North/South line	Feet from the	East/West line	County
L	23	25 N	10 W		1943	SOUTH	382	WEST	SAN JUAN

<sup>11</sup> Bottom Hole Location If Different From Surface

UL or lot no.	Section	Township	Range	Lot Idn	Feet from the	North/South line	Feet from the	East/West line	County
P	23	25 N	10 W		869	SOUTH	1223	EAST	SAN JUAN

<sup>12</sup> Dedicated Acres S/2, 320 AC±	<sup>13</sup> Joint or Infill	<sup>14</sup> Consolidation Code	<sup>15</sup> Order No
---	-------------------------------	----------------------------------	------------------------

NO ALLOWABLE WILL BE ASSIGNED TO THIS COMPLETION UNTIL ALL INTERESTS HAVE BEEN CONSOLIDATED OR A NON-STANDARD UNIT HAS BEEN APPROVED BY THE DIVISION

<p>16 N 89°43'26" E 2641.85'</p> <p>N 89°45'21" E 2628.75'</p> <p>2640.67'</p> <p>N 0°02'44" W</p> <p>SECTION 23</p>	<p><sup>17</sup> OPERATOR CERTIFICATION</p> <p>I hereby certify that the information contained herein is true and complete to the best of my knowledge and belief, and that this organization either owns a working interest or unleased mineral interest in the land including the proposed bottom hole location or has a right to drill this well at this location pursuant to a contract with an owner of such a mineral or working interest, or to a voluntary pooling agreement or a compulsory pooling order heretofore entered by the division.</p> <p><i>Loori Bragg-Hall</i> 3/10/10 Signature Date LOORI BRAGG-HALL Printed Name</p>
<p>382'</p> <p>2645.06'</p> <p>N 0°01'43" W</p> <p>1943'</p> <p>LAT: 36.381709° N LONG: 107.861270° W NAD 83</p> <p>LAT: 36.381699° N LONG: 107.860653° W NAD 27</p> <p>865'</p> <p>S 89°57'14" W 2638.28'</p> <p>S 89°58'54" W 2636.80'</p>	<p><sup>18</sup> SURVEYOR CERTIFICATION</p> <p>I hereby certify that the well location shown on this plat was plotted from field notes of actual surveys made by me or under my supervision, and that the same is true and correct to the best of my belief.</p> <p>3/03/10 Date of Survey</p> <p><i>Marshall W. Linden</i> Signature and Seal of Professional Surveyor</p> <p>MARSHALL W. LINDEN NEW MEXICO LICENSED PROFESSIONAL SURVEYOR 3-5-10 17078</p> <p>17078 Certificate Number</p>



Labor #21  
San Juan Co., New Mexico

**SITE DETAILS**

Labor #21  
1946' FSL 386' FWL of Sec 23, T25N, R10W  
Site Centre Latitude: 36°23'04.799N  
Longitude: 107°52'25.414W  
Ground Level: 6615.00  
Positional Uncertainty: 0.00  
Convergence: -0.02



Azimuths to True North  
Magnetic North 10 07°

Magnetic Field  
Strength 50702nT  
Dip Angle 63 16°  
Date 1/20/2010  
Model IGRF2010

Total Correction to True North 10 07°

SECTION DETAILS										
Sec	MD	Inc	Azi	TVD	+N/-S	+E/-W	DLeg	TFace	VSec	Target
1	0.00	0.00	0.00	0.00	0.00	0.00	0.00	0.00	0.00	
2	732.08	0.00	0.00	732.08	0.00	0.00	0.00	0.00	0.00	
3	2228.73	89.80	106.50	1687.00	-270.29	912.38	6.00	106.50	951.58	
4	5646.76	89.80	106.50	1699.00	-1241.14	4189.61	0.00	0.00	4369.58	Pbhl

FIELD DETAILS	
San Juan, NM (NAD 83)	
Geodetic System: US State Plane Coordinate System 1983	
Ellipsoid: GRS 1980	
Zone: New Mexico, Western Zone	
Magnetic Model: IGRF2010	
System Datum: Mean Sea Level	
Local North: True North	

WELL DETAILS							
Name	+N/-S	+E/-W	Northing	Easting	Latitude	Longitude	Slot
#21	0.00	0.00	1959327.12	2711207.71	36°23'04.799N	107°52'25.414W	N/A

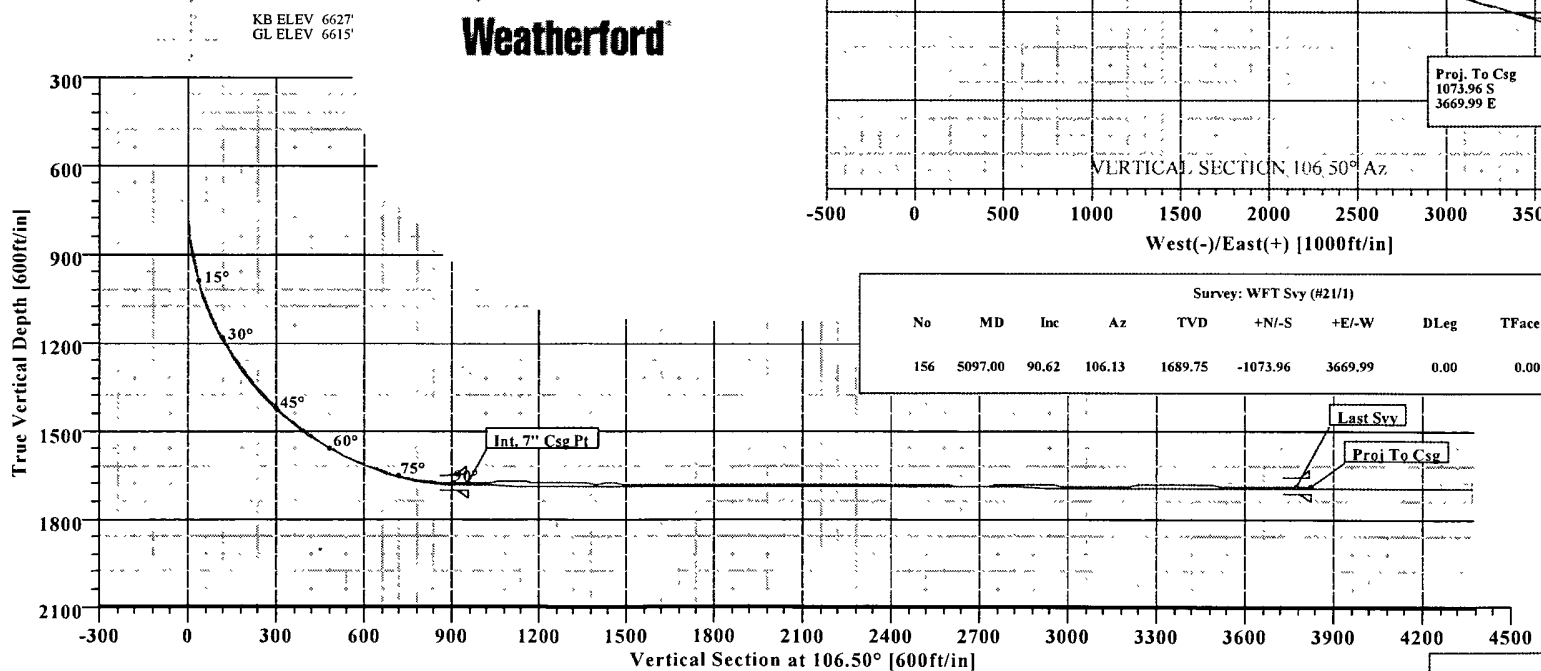
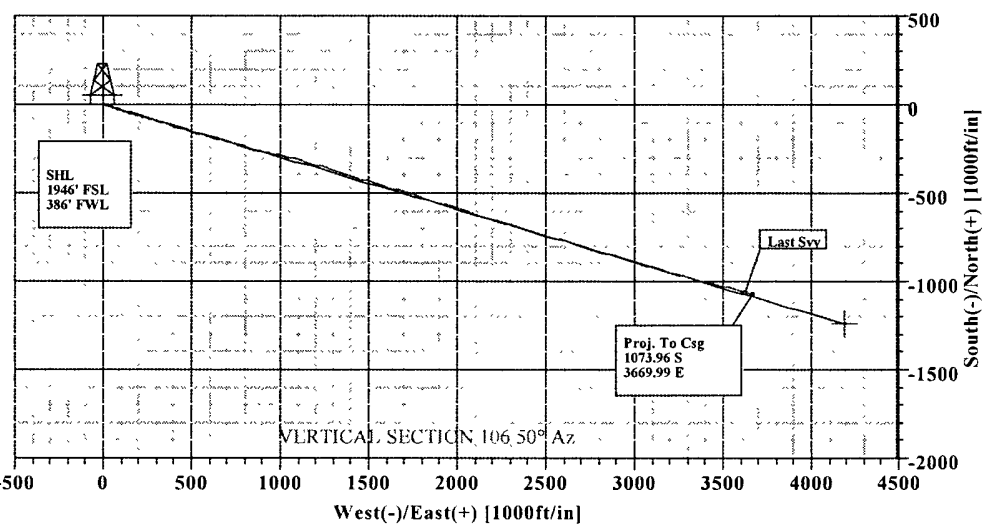
FORMATION TOP DETAILS			
No.	TVDPath	MDPath	Formation
1	829.00	829.24	Ojo Alamo SS
2	964.00	966.22	Kirtland Shale
3	1259.00	1293.14	Fruitland Fm
4	1682.00	2769.15	Lower Fruitland Coal

TARGET DETAILS						
Name	TVD	+N/-S	+E/-W	Latitude	Longitude	Shape
Pbhl	1699.00	-1241.14	4189.61	36°22'52.522N	107°51'34.175W	Point

**LEGEND**

— #21, L Plan #1

— WFT Svy



Survey: WFT Svy (#21/1)										
No	MD	Inc	Az	TVD	+N/-S	+E/-W	DLeg	TFace	VSec	
156	5097.00	90.62	106.13	1689.75	-1073.96	3669.99	0.00	0.00	3823.88	

Survey WFT Svy (#21/1)  
Created By Russell W Joyner Date 3/1/2010



# Weatherford International Ltd.

## WFT Survey Report Lat, Long



<b>Company:</b> XTO <b>Field:</b> San Juan, NM (NAD 83) <b>Site:</b> Labor #21 <b>Well:</b> #21 <b>Wellpath:</b> 1	<b>Date:</b> 3/2/2010 <b>Co-ordinate(NE) Reference:</b> Well: #21, True North <b>Vertical (TVD) Reference:</b> SITE 6627 0 <b>Section (VS) Reference:</b> Well (0.00N,0.00E,106 50Azi) <b>Survey Calculation Method:</b> Minimum Curvature	<b>Time:</b> 08:32:01 <b>Db:</b> Sybase	<b>Page:</b> 1
--	--	--	----------------

<b>Survey:</b> WFT Svy  <b>Company:</b> Weatherford International, Inc <b>Tool:</b> MWD;MWD - Standard	<b>Start Date:</b> 2/17/2010  <b>Engineer:</b> Lindsey Maddux <b>Tied-to:</b> From Surface
---	---

<b>Field:</b> San Juan, NM (NAD 83)  <b>Map System:</b> US State Plane Coordinate System 1983 <b>Geo Datum:</b> GRS 1980 <b>Sys Datum:</b> Mean Sea Level	<b>Map Zone:</b> New Mexico, Western Zone <b>Coordinate System:</b> Well Centre <b>Geomagnetic Model:</b> IGRF2010
---	--

<b>Site:</b> Labor #21  1946' FSL 386' FWL of Sec 23, T25N, R10W <b>Site Position:</b> Northing: 1959327.12 ft <b>From:</b> Geographic Easting: 2711207.71 ft <b>Position Uncertainty:</b> 0 00 ft <b>Ground Level:</b> 6615 00 ft	<b>Latitude:</b> 36 23 4.799 N <b>Longitude:</b> 107 52 25.414 W <b>North Reference:</b> True <b>Grid Convergence:</b> -0.02 deg
--	---

<b>Well:</b> #21  <b>Well Position:</b> +N/-S 0.00 ft Northing: 1959327.12 ft +E/-W 0.00 ft Easting: 2711207.71 ft <b>Position Uncertainty:</b> 0.00 ft	<b>Slot Name:</b>  <b>Latitude:</b> 36 23 4 799 N <b>Longitude:</b> 107 52 25 414 W
---	--

<b>Wellpath:</b> 1  <b>Current Datum:</b> SITE <b>Magnetic Data:</b> 1/20/2010 <b>Field Strength:</b> 50702 nT <b>Vertical Section:</b> Depth From (TVD) ft	<b>Height</b> 6627.00 ft <b>+N/-S</b> ft <b>+E/-W</b> ft	<b>Drilled From:</b> Surface <b>Tie-on Depth:</b> 0 00 ft <b>Above System Datum:</b> Mean Sea Level <b>Declination:</b> 10 07 deg <b>Mag Dip Angle:</b> 63.16 deg <b>Direction</b> deg	0 00      0 00      0.00      106.50
--	--	---	--------------------------------------

**Survey**

MD ft	Incl deg	Azim deg	TVD ft	N/S ft	E/W ft	VS ft	DLS deg/100ft	Lat	Min	Sec	Long	Min	Sec	Comment
0 00	0 00	0 00	0 00	0 00	0 00	0 00	0 00	36	23	4.799	107	52	25 414	
296 00	0 10	350 50	296 00	0 25	-0 04	-0 11	0 03	36	23	4 802	107	52	25 415	
325 00	0 20	202 90	325 00	0 23	-0 07	-0 13	1 00	36	23	4 801	107	52	25 415	
354 00	0 10	234 40	354 00	0 17	-0 11	-0 15	0 43	36	23	4 801	107	52	25 415	
384 00	0 10	28 30	384 00	0 18	-0 12	-0 16	0 65	36	23	4 801	107	52	25 415	
415 00	0 10	213 40	415 00	0 18	-0 12	-0 16	0 64	36	23	4 801	107	52	25 415	
445 00	0 10	106 70	445 00	0 15	-0 11	-0 15	0 53	36	23	4 800	107	52	25 415	
476 00	0 10	227 70	476 00	0 13	-0 10	-0 13	0 56	36	23	4 800	107	52	25 415	
506 00	0 10	87 80	506 00	0 11	-0 09	-0 12	0 63	36	23	4 800	107	52	25 415	
536 00	0 10	75 10	536 00	0 12	-0 04	-0 07	0 07	36	23	4 800	107	52	25 415	
566 00	0 10	168 80	566 00	0 10	-0 01	-0 04	0 49	36	23	4 800	107	52	25 414	
596 00	0 30	131 00	596 00	0 02	0 05	0 04	0 76	36	23	4 799	107	52	25 413	
627 00	0 20	138 00	627 00	-0 07	0 15	0 16	0 34	36	23	4 798	107	52	25 412	
656 00	0 20	96 50	656 00	-0 12	0 23	0 26	0 49	36	23	4 798	107	52	25 411	
686 00	0 30	131 30	686 00	-0 17	0 34	0 38	0 59	36	23	4 797	107	52	25 410	
716 00	0 40	131 00	716 00	-0 29	0 48	0 55	0 33	36	23	4 796	107	52	25 408	
746 00	2 50	113 60	745 99	-0 63	1 16	1 29	7 07	36	23	4 793	107	52	25 400	
777 00	3 70	110 80	776 94	-1 25	2 72	2 96	3 90	36	23	4 787	107	52	25 381	
807 00	4 80	108 70	806 86	-2 00	4 81	5 18	3 70	36	23	4 779	107	52	25 355	
838 00	6 50	109 70	837 71	-3 00	7 69	8 23	5 49	36	23	4 769	107	52	25 320	
868 00	8 00	108 30	867 47	-4 23	11 27	12 01	5 03	36	23	4 757	107	52	25 276	
900 00	9 40	107 10	899 10	-5 70	15 88	16 85	4 41	36	23	4 743	107	52	25 220	
930 00	11 20	108 80	928 61	-7 36	20 98	22 21	6 08	36	23	4 726	107	52	25 157	
960 00	13 00	108 80	957 94	-9 39	26 94	28 49	6 00	36	23	4 706	107	52	25 085	



# Weatherford International Ltd.

## WFT Survey Report Lat, Long



<b>Company:</b> XTO <b>Field:</b> San Juan, NM (NAD 83) <b>Site:</b> Labor #21 <b>Well:</b> #21 <b>Wellpath:</b> 1	<b>Date:</b> 3/2/2010 <b>Co-ordinate(NE) Reference:</b> <b>Vertical (TVD) Reference:</b> <b>Section (VS) Reference:</b> <b>Survey Calculation Method:</b>	<b>Time:</b> 08:32:01 <b>Well:</b> #21, True North <b>SITE:</b> 6627.0 <b>Well (0.00N,0.00E,106 50Azi):</b> <b>Minimum Curvature</b> <b>Db:</b> Sybase
--	---	---

### Survey

MD ft	Incl deg	Azim deg	TVD ft	N/S ft	E/W ft	VS ft	DLS deg/100ft	Lat	Min	Sec	Long	Min	Sec	Comment
991.00	15 00	108.80	988.02	-11.80	34.0435	99	6.45	36	23	4.682	107	52	24.998	
1022.00	17.50	109.00	1017.78	-14.61	42.24	44 65	8.07	36	23	4.654	107	52	24.897	
1054.00	19.80	108.00	1048.10	-17.86	51.95	54.88	7.26	36	23	4.622	107	52	24.779	
1086.00	22.20	108.00	1077.97	-21.40	62.85	66.34	7.50	36	23	4.587	107	52	24.645	
1118.00	24.50	107 80	1107.35	-25.30	74 92	79 02	7.19	36	23	4.549	107	52	24.498	
1150.00	26 60	107 10	1136 22	-29.43	88.09	92.82	6.63	36	23	4.508	107	52	24.337	
1181.00	28.50	106.60	1163.70	-33.59	101 81	107 16	6.17	36	23	4.467	107	52	24.169	
1213.00	30.30	106 60	1191 58	-38 07	116 86	122.86	5.62	36	23	4.422	107	52	23.985	
1244.00	32.40	106 60	1218.05	-42.68	132.32	138.99	6.77	36	23	4.377	107	52	23.796	
1276.00	33 90	106 40	1244.84	-47.65	149.10	156 49	4.70	36	23	4.328	107	52	23.590	
1308.00	35.50	106 40	1271.15	-52.79	166 57	174 71	5.00	36	23	4.277	107	52	23.377	
1340.00	36 90	105.70	1296.97	-58.02	184 73	193.60	4 56	36	23	4 225	107	52	23 155	
1372.00	38 70	105 70	1322 26	-63.32	203.61	213.21	5 62	36	23	4.173	107	52	22.924	
1403.00	39.90	106 00	1346 25	-68.69	222 50	232.85	3.92	36	23	4.120	107	52	22.693	
1435.00	41.60	106.70	1370 49	-74.57	242.54	253 73	5.50	36	23	4 062	107	52	22 448	
1467.00	42.90	107 60	1394.17	-80.91	263.10	275 25	4 48	36	23	3.999	107	52	22 196	
1499.00	44.80	108.00	1417.25	-87.69	284 21	297 41	6.00	36	23	3.932	107	52	21 938	
1531.00	47.50	107.40	1439.42	-94.71	306.19	320 48	8 55	36	23	3 862	107	52	21 669	
1563.00	50.00	107.10	1460 51	-101 84	329 17	344.53	7.84	36	23	3.792	107	52	21 388	
1594.00	52.10	106 40	1480.00	-108.78	352 25	368 64	7.00	36	23	3.723	107	52	21.106	
1626.00	53.70	106 40	1499 30	-115.99	376.73	394.16	5 00	36	23	3.652	107	52	20.806	
1656.00	55 10	106.40	1516.77	-122 88	400 13	418 56	4 67	36	23	3.584	107	52	20.520	
1688.00	56 70	106 20	1534.71	-130.31	425.57	445.05	5.03	36	23	3.510	107	52	20 209	
1719.00	58 90	106 20	1551 22	-137.63	450.76	471.28	7.10	36	23	3.438	107	52	19 901	
1751.00	61 60	106.40	1567.10	-145 43	477 42	499.06	8.45	36	23	3.361	107	52	19.575	
1783.00	64 10	106.70	1581.70	-153 54	504 71	527 53	7 86	36	23	3.281	107	52	19.241	
1814.00	65.50	106.90	1594 90	-161.65	531.56	555 58	4 55	36	23	3.200	107	52	18 913	
1846.00	66 70	106.60	1607 87	-170.08	559.58	584.84	3.85	36	23	3 117	107	52	18 570	
1878.00	68 80	106.00	1619.98	-178 39	588 00	614.45	6.79	36	23	3.035	107	52	18.222	
1910.00	70 60	105.80	1631.08	-186 61	616 86	644.46	5.66	36	23	2.954	107	52	17 869	
1942.00	72 30	105.80	1641 26	-194 87	646.05	674.80	5.31	36	23	2.872	107	52	17 512	
1973.00	74.00	106.00	1650.25	-203 00	674.59	704.46	5 52	36	23	2.791	107	52	17 163	
2005.00	76.70	106 20	1658.34	-211 58	704 33	735 42	8.46	36	23	2.707	107	52	16 800	
2037.00	79 00	106 00	1665.08	-220 26	734.38	766 70	7.21	36	23	2.621	107	52	16 432	
2068.00	81 00	105 80	1670.46	-228.62	763.74	797 22	6.48	36	23	2.538	107	52	16.073	
2100.00	83 20	106 00	1674.86	-237.30	794 23	828 92	6.90	36	23	2.452	107	52	15.700	
2132.00	85.60	106 60	1677.98	-246 24	824 79	860.76	7.73	36	23	2.364	107	52	15 326	
2164.00	88.70	107.10	1679 57	-255 51	855 37	892.72	9 81	36	23	2 272	107	52	14 952	
2179.00	90 10	106.90	1679.73	-259.89	869.72	907.72	9 43	36	23	2.229	107	52	14 777	
2226.00	92 04	99 97	1678 85	-270.80	915.39	954 61	15 30	36	23	2 121	107	52	14 218	
2232.00	92.29	99.09	1678 62	-271 80	921 31	960.56	15.30	36	23	2 111	107	52	14.146	Int. 7" Csg
2241.00	92 43	100.80	1678 25	-273 35	930 16	969.49	19.05	36	23	2 096	107	52	14.038	
2248.00	92 62	101.38	1677 94	-274.70	937.03	976.46	8.71	36	23	2 082	107	52	13 954	
2273.00	93.14	101.90	1676 68	-279.73	961.48	1001.33	2.94	36	23	2 032	107	52	13 655	
2304.00	92.46	102.60	1675.17	-286 30	991 74	1032.21	3.15	36	23	1.968	107	52	13.285	
2335.00	91.19	103.05	1674 18	-293.18	1021.95	1063.13	4.35	36	23	1 899	107	52	12 915	
2364.00	89.50	103.30	1674 01	-299.79	1050.18	1092.08	5.89	36	23	1.834	107	52	12 570	
2395.00	89 37	103 35	1674.31	-306.93	1080.35	1123 03	0.45	36	23	1.763	107	52	12.201	
2426.00	89 38	103 58	1674.65	-314.15	1110 49	1153.99	0.74	36	23	1 692	107	52	11.832	
2455.00	88 83	105 11	1675.11	-321.34	1138 59	1182 96	5.61	36	23	1.621	107	52	11.489	
2486.00	87.53	106.25	1676 09	-329.71	1168.42	1213.94	5 58	36	23	1.538	107	52	11 124	
2517.00	87.42	107.65	1677.46	-338 74	1198 04	1244 91	4 53	36	23	1 449	107	52	10 761	



# Weatherford International Ltd.

## WFT Survey Report Lat, Long



<b>Company:</b> XTO <b>Field:</b> San Juan, NM (NAD 83) <b>Site:</b> Labor #21 <b>Well:</b> #21 <b>Wellpath:</b> 1	<b>Date:</b> 3/2/2010 <b>Co-ordinate(NE) Reference:</b> <b>Vertical (TVD) Reference:</b> <b>Section (VS) Reference:</b> <b>Survey Calculation Method:</b>	<b>Time:</b> 08:32:01 <b>Well:</b> #21, True North <b>SITE:</b> 6627.0 <b>Well (0.00N,0.00E,106.50Azi)</b> <b>Minimum Curvature</b> <b>Db:</b> Sybase
--	---	--

### Survey

MD ft	Incl deg	Azim deg	TVD ft	N/S ft	E/W ft	VS ft	DLS deg/100ft	Lat	Min	Sec	Long	Min	Sec	Comment
2548.00	87.69	107.90	1678.78	-348.19	1227.53	1275.87	1.19	36	23	1.355	107	52	10.401	
2578.00	88.20	107.89	1679.85	-357.41	1256.06	1305.85	1.70	36	23	1.264	107	52	10.052	
2609.00	88.93	108.06	1680.63	-366.97	1285.54	1336.83	2.42	36	23	1.170	107	52	9.691	
2640.00	89.14	107.94	1681.15	-376.55	1315.02	1367.81	0.78	36	23	1.075	107	52	9.331	
2671.00	89.83	107.70	1681.43	-386.03	1344.53	1398.80	2.36	36	23	0.981	107	52	8.970	
2701.00	91.00	107.55	1681.21	-395.12	1373.12	1428.79	3.93	36	23	0.891	107	52	8.620	
2732.00	89.41	106.81	1681.10	-404.27	1402.74	1459.79	5.66	36	23	0.801	107	52	8.258	
2763.00	88.04	107.05	1681.79	-413.30	1432.38	1490.78	4.49	36	23	0.711	107	52	7.895	
2794.00	88.31	107.15	1682.78	-422.41	1462.00	1521.76	0.93	36	23	0.621	107	52	7.533	
2824.00	89.04	107.10	1683.47	-431.24	1490.66	1551.75	2.44	36	23	0.534	107	52	7.183	
2855.00	89.84	106.88	1683.78	-440.30	1520.31	1582.75	2.68	36	23	0.444	107	52	6.820	
2886.00	89.21	106.67	1684.03	-449.24	1549.99	1613.75	2.14	36	23	0.356	107	52	6.457	
2917.00	89.37	106.86	1684.42	-458.19	1579.67	1644.75	0.80	36	23	0.267	107	52	6.094	
2948.00	89.77	106.53	1684.65	-467.09	1609.36	1675.75	1.67	36	23	0.179	107	52	5.731	
2979.00	90.87	105.92	1684.48	-475.75	1639.12	1706.74	4.06	36	23	0.094	107	52	5.367	
3009.00	91.16	105.68	1683.95	-483.92	1667.98	1736.74	1.25	36	23	0.013	107	52	5.014	
3040.00	91.76	105.64	1683.16	-492.28	1697.82	1767.72	1.94	36	22	59.930	107	52	4.649	
3071.00	91.27	106.22	1682.34	-500.79	1727.62	1798.71	2.45	36	22	59.846	107	52	4.285	
3102.00	90.97	106.79	1681.73	-509.59	1757.34	1829.70	2.08	36	22	59.759	107	52	3.921	
3133.00	89.84	107.41	1681.51	-518.71	1786.97	1860.70	4.16	36	22	59.669	107	52	3.559	
3163.00	88.47	108.20	1681.95	-527.88	1815.53	1890.69	5.27	36	22	59.578	107	52	3.210	
3194.00	88.67	108.32	1682.73	-537.59	1844.96	1921.67	0.75	36	22	59.482	107	52	2.850	
3226.00	89.46	107.99	1683.25	-547.56	1875.36	1953.65	2.68	36	22	59.383	107	52	2.478	
3258.00	90.37	108.37	1683.30	-557.55	1905.76	1985.63	3.08	36	22	59.285	107	52	2.106	
3290.00	89.29	108.07	1683.39	-567.55	1936.16	2017.62	3.50	36	22	59.186	107	52	1.734	
3322.00	87.79	108.04	1684.21	-577.46	1966.57	2049.60	4.69	36	22	59.088	107	52	1.362	
3354.00	88.00	107.64	1685.38	-587.26	1997.01	2081.56	1.41	36	22	58.991	107	52	0.990	
3386.00	88.25	107.74	1686.43	-596.98	2027.48	2113.54	0.84	36	22	58.895	107	52	0.617	
3418.00	89.30	107.55	1687.11	-606.68	2057.97	2145.53	3.33	36	22	58.799	107	52	0.244	
3450.00	90.17	107.35	1687.26	-616.27	2088.50	2177.52	2.79	36	22	58.704	107	51	59.871	
3482.00	91.06	107.22	1686.92	-625.78	2119.05	2209.52	2.81	36	22	58.610	107	51	59.497	
3514.00	91.63	107.21	1686.17	-635.25	2149.61	2241.50	1.78	36	22	58.516	107	51	59.124	
3546.00	91.39	107.03	1685.32	-644.67	2180.18	2273.49	0.94	36	22	58.423	107	51	58.750	
3579.00	91.63	106.57	1684.45	-654.20	2211.76	2306.48	1.57	36	22	58.329	107	51	58.364	
3611.00	90.86	106.03	1683.76	-663.18	2242.46	2338.47	2.94	36	22	58.240	107	51	57.988	
3643.00	89.56	106.84	1683.64	-672.23	2273.16	2370.47	4.79	36	22	58.150	107	51	57.613	
3675.00	88.73	106.55	1684.12	-681.42	2303.80	2402.47	2.75	36	22	58.059	107	51	57.238	
3707.00	87.88	106.73	1685.07	-690.58	2334.45	2434.45	2.72	36	22	57.969	107	51	56.863	
3739.00	88.05	106.55	1686.20	-699.74	2365.09	2466.43	0.77	36	22	57.878	107	51	56.488	
3772.00	89.07	106.38	1687.03	-709.09	2396.73	2499.42	3.13	36	22	57.786	107	51	56.101	
3804.00	89.86	106.61	1687.33	-718.18	2427.41	2531.42	2.57	36	22	57.696	107	51	55.726	
3835.00	90.67	106.54	1687.19	-727.02	2457.12	2562.42	2.62	36	22	57.608	107	51	55.363	
3867.00	89.37	107.36	1687.18	-736.35	2487.73	2594.42	4.80	36	22	57.516	107	51	54.989	
3899.00	88.43	107.47	1687.79	-745.92	2518.25	2626.41	2.96	36	22	57.421	107	51	54.615	
3931.00	89.00	107.30	1688.51	-755.48	2548.79	2658.39	1.86	36	22	57.327	107	51	54.242	
3963.00	90.54	107.13	1688.64	-764.95	2579.35	2690.39	4.84	36	22	57.233	107	51	53.868	
3995.00	91.43	107.15	1688.09	-774.38	2609.92	2722.38	2.78	36	22	57.140	107	51	53.494	
4027.00	91.35	107.35	1687.31	-783.87	2640.48	2754.37	0.67	36	22	57.046	107	51	53.120	
4059.00	91.95	107.32	1686.39	-793.40	2671.01	2786.35	1.88	36	22	56.952	107	51	52.747	
4092.00	90.69	106.68	1685.63	-803.04	2702.56	2819.34	4.28	36	22	56.856	107	51	52.361	
4124.00	89.94	106.30	1685.45	-812.13	2733.24	2851.34	2.63	36	22	56.766	107	51	51.986	
4156.00	89.06	105.80	1685.73	-820.97	2763.99	2883.34	3.16	36	22	56.679	107	51	51.610	
4188.00	89.56	106.05	1686.12	-829.75	2794.76	2915.34	1.75	36	22	56.592	107	51	51.234	



# Weatherford International Ltd.

## WFT Survey Report Lat, Long



Weatherford

<b>Company:</b> XTO <b>Field:</b> San Juan, NM (NAD 83) <b>Site:</b> Labor #21 <b>Well:</b> #21 <b>Wellpath:</b> 1	<b>Date:</b> 3/2/2010 <b>Co-ordinate(NE) Reference:</b> Well: #21, True North <b>Vertical (TVD) Reference:</b> SITE 6627.0 <b>Section (VS) Reference:</b> Well (0.00N,0.00E,106.50Az) <b>Survey Calculation Method:</b> Minimum Curvature	<b>Time:</b> 08.32:01 <b>Page:</b> 4 <b>Db:</b> Sybase
--	---	--

**Survey**

MD ft	Incl deg	Azim deg	TVD ft	N/S ft	E/W ft	VS ft	DLS deg/100ft	Lat	Min	Sec	Long	Min	Sec	Comment
4220.00	88.69	106.18	1686.61	-838.63	2825.50	2947.33	2.75	36	22	56.504	107	51	50.858	
4252.00	87.75	106.43	1687.60	-847.61	2856.20	2979.32	3.04	36	22	56.415	107	51	50.482	
4284.00	88.44	106.55	1688.66	-856.69	2886.87	3011.30	2.19	36	22	56.326	107	51	50.107	
4316.00	89.46	106.37	1689.25	-865.76	2917.55	3043.29	3.24	36	22	56.236	107	51	49.732	
4348.00	90.36	106.45	1689.30	-874.80	2948.24	3075.29	2.82	36	22	56.146	107	51	49.356	
4385.00	91.06	106.70	1688.84	-885.35	2983.70	3112.29	2.01	36	22	56.042	107	51	48.923	
4416.00	91.44	106.18	1688.16	-894.12	3013.43	3143.28	2.08	36	22	55.955	107	51	48.559	
4447.00	90.00	106.79	1687.78	-902.92	3043.15	3174.28	5.04	36	22	55.868	107	51	48.196	
4477.00	90.40	106.93	1687.67	-911.62	3071.86	3204.28	1.41	36	22	55.782	107	51	47.845	
4508.00	91.29	106.68	1687.21	-920.58	3101.54	3235.27	2.98	36	22	55.693	107	51	47.482	
4539.00	92.08	106.69	1686.30	-929.48	3131.22	3266.26	2.55	36	22	55.605	107	51	47.119	
4571.00	90.79	106.75	1685.50	-938.68	3161.85	3298.25	4.04	36	22	55.514	107	51	46.744	
4603.00	90.32	105.60	1685.19	-947.60	3192.58	3330.24	3.88	36	22	55.426	107	51	46.368	
4635.00	91.05	105.25	1684.81	-956.11	3223.43	3362.24	2.53	36	22	55.342	107	51	45.991	
4667.00	90.11	104.64	1684.48	-964.36	3254.35	3394.22	3.50	36	22	55.260	107	51	45.613	
4698.00	89.18	104.47	1684.68	-972.15	3284.35	3425.20	3.05	36	22	55.183	107	51	45.246	
4729.00	87.88	103.80	1685.47	-979.72	3314.40	3456.17	4.72	36	22	55.108	107	51	44.878	
4761.00	88.00	103.68	1686.62	-987.31	3345.46	3488.11	0.53	36	22	55.033	107	51	44.499	
4793.00	87.50	104.05	1687.88	-994.97	3376.51	3520.05	1.94	36	22	54.957	107	51	44.119	
4826.00	88.25	104.18	1689.10	-1003.02	3408.49	3553.00	2.31	36	22	54.878	107	51	43.728	
4858.00	89.07	104.16	1689.85	-1010.85	3439.51	3584.96	2.56	36	22	54.800	107	51	43.348	
4890.00	89.39	104.18	1690.28	-1018.68	3470.53	3616.93	1.00	36	22	54.723	107	51	42.969	
4921.00	89.25	104.93	1690.65	-1026.47	3500.53	3647.91	2.46	36	22	54.646	107	51	42.602	
4953.00	90.00	105.05	1690.86	-1034.75	3531.44	3679.90	2.37	36	22	54.564	107	51	42.224	
4985.00	89.94	105.61	1690.87	-1043.21	3562.30	3711.89	1.76	36	22	54.480	107	51	41.847	
5017.00	90.81	105.72	1690.66	-1051.85	3593.12	3743.89	2.74	36	22	54.395	107	51	41.470	
5049.00	90.62	106.13	1690.27	-1060.63	3623.88	3775.89	1.41	36	22	54.308	107	51	41.094	Last Svy
5097.00	90.62	106.13	1689.75	-1073.96	3669.99	3823.88	0.00	36	22	54.176	107	51	40.530	Ext, 4 1/2"

**Casing Points**

MD ft	TVD ft	Diameter in	Hole Size in	Name
2226.00	1678.85	7.000	8.500	Int. 7" Csg Pt
5097.00	1689.75	0.000	0.000	Ext. 4 1/2" Csg Pt

**Formations**

MD ft	TVD ft	Formations	Lithology	Dip Angle deg	Dip Direction deg
829.24	829.00	Ojo Alamo SS		0.00	0.00
966.22	964.00	Kirtland Shale		0.00	0.00
1293.14	1259.00	Fruitland Fm		0.00	0.00
2769.15	1682.00	Lower Fruitland Coal		0.00	0.00