

District I  
1625 N. French Dr., Hobbs, NM 88240  
District II  
1301 W. Grand Avenue, Artesia, NM 88210  
District III  
1000 Rio Brazos Road, Aztec, NM 87410  
District IV  
1220 S. St. Francis Dr., Santa Fe, NM 87505

State of New Mexico  
Energy Minerals and Natural Resources  
Department  
Oil Conservation Division  
1220 South St. Francis Dr.  
Santa Fe, NM 87505

Form C-144  
July 21, 2008

For temporary pits, closed-loop systems, and below-grade tanks, submit to the appropriate NMOCD District Office.  
For permanent pits and exceptions submit to the Santa Fe Environmental Bureau office and provide a copy to the appropriate NMOCD District Office.

5276  
Pit, Closed-Loop System, Below-Grade Tank, or  
Proposed Alternative Method Permit or Closure Plan Application

Type of action: ☒ Permit of a pit, closed-loop system, below-grade tank, or proposed alternative method  
☒ Closure of a pit, closed-loop system, below-grade tank, or proposed alternative method  
☐ Modification to an existing permit  
☐ Closure plan only submitted for an existing permitted or non-permitted pit, closed-loop system, below-grade tank, or proposed alternative method

**Instructions:** Please submit one application (Form C-144) per individual pit, closed-loop system, below-grade tank or alternative request

Please be advised that approval of this request does not relieve the operator of liability should operations result in pollution of surface water, ground water or the environment. Nor does approval relieve the operator of its responsibility to comply with any other applicable governmental authority's rules, regulations or ordinances.

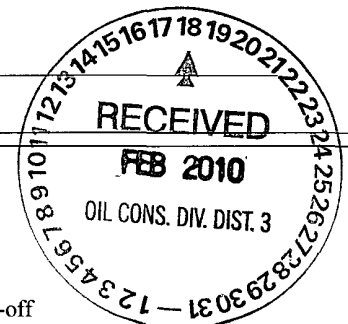
1.  
Operator: Williams Operating Co, LLC OGRID #: 120782  
Address: PO Box 640 / 721 S Main Aztec, NM 87410  
Facility or well name: Rosa Unit 75D  
API Number: 3004534964 OCD Permit Number: \_\_\_\_\_  
U/L or Qtr/Qtr L Section 10 Township 31N Range 6W County: San Juan  
Center of Proposed Design: Latitude 36.91187 N Longitude -107.45726W NAD: ☐ 1927 ☒ 1983  
Surface Owner: ☒ Federal ☐ State ☐ Private ☐ Tribal Trust or Indian Allotment

2.  
☒ **Pit:** Subsection F or G of 19.15.17.11 NMAC  
Temporary: ☒ Drilling ☐ Workover  
☐ Permanent ☐ Emergency ☐ Cavitation ☐ P&A  
☒ Lined ☐ Unlined Liner type: Thickness 20 mil ☒ LLDPE ☐ HDPE ☐ PVC ☐ Other \_\_\_\_\_  
☒ String-Reinforced  
Liner Seams: ☒ Welded ☒ Factory ☐ Other \_\_\_\_\_ Volume: 20,000 bbl Dimensions: L 140' x W 70' x D 12'

3.  
☐ **Closed-loop System:** Subsection H of 19.15.17.11 NMAC  
Type of Operation: ☐ P&A ☐ Drilling a new well ☐ Workover or Drilling (Applies to activities which require prior approval of a permit or notice of intent)  
☐ Drying Pad ☐ Above Ground Steel Tanks ☐ Haul-off Bins ☐ Other \_\_\_\_\_  
☐ Lined ☐ Unlined Liner type: Thickness \_\_\_\_\_ mil ☐ LLDPE ☐ HDPE ☐ PVC ☐ Other \_\_\_\_\_  
Liner Seams: ☐ Welded ☐ Factory ☐ Other \_\_\_\_\_

4.  
☐ **Below-grade tank:** Subsection I of 19.15.17.11 NMAC  
Volume: \_\_\_\_\_ bbl Type of fluid: \_\_\_\_\_  
Tank Construction material: \_\_\_\_\_  
☐ Secondary containment with leak detection ☐ Visible sidewalls, liner, 6-inch lift and automatic overflow shut-off  
☐ Visible sidewalls and liner ☐ Visible sidewalls only ☐ Other \_\_\_\_\_  
Liner type: Thickness \_\_\_\_\_ mil ☐ HDPE ☐ PVC ☐ Other \_\_\_\_\_

5.  
☐ **Alternative Method:**  
Submittal of an exception request is required. Exceptions must be submitted to the Santa Fe Environmental Bureau office for consideration of approval.



6.

**Fencing:** Subsection D of 19.15.17.11 NMAC (*Applies to permanent pits, temporary pits, and below-grade tanks*)

- ☐ Chain link, six feet in height, two strands of barbed wire at top (*Required if located within 1000 feet of a permanent residence, school, hospital, institution or church*)
- ☐ Four foot height, four strands of barbed wire evenly spaced between one and four feet
- ☒ Alternate. Please specify As per BLM specifications

7.

**Netting:** Subsection E of 19.15.17.11 NMAC (*Applies to permanent pits and permanent open top tanks*)

- ☐ Screen ☐ Netting ☐ Other \_\_\_\_\_
- ☐ Monthly inspections (If netting or screening is not physically feasible)

8.

**Signs:** Subsection C of 19.15.17.11 NMAC

- ☐ 12"x 24", 2" lettering, providing Operator's name, site location, and emergency telephone numbers
- ☒ Signed in compliance with 19.15.3.103 NMAC

9.

**Administrative Approvals and Exceptions:**

Justifications and/or demonstrations of equivalency are required. Please refer to 19.15.17 NMAC for guidance.

**Please check a box if one or more of the following is requested, if not leave blank:**

- ☒ Administrative approval(s): Requests must be submitted to the appropriate division district or the Santa Fe Environmental Bureau office for consideration of approval.
- ☐ Exception(s): Requests must be submitted to the Santa Fe Environmental Bureau office for consideration of approval.

10.

**Siting Criteria (regarding permitting):** 19.15.17.10 NMAC

**Instructions:** The applicant must demonstrate compliance for each siting criteria below in the application. Recommendations of acceptable source material are provided below. Requests regarding changes to certain siting criteria may require administrative approval from the appropriate district office or may be considered an exception which must be submitted to the Santa Fe Environmental Bureau office for consideration of approval. Applicant must attach justification for request. Please refer to 19.15.17.10 NMAC for guidance. Siting criteria does not apply to drying pads or above-grade tanks associated with a closed-loop system.

Ground water is less than 50 feet below the bottom of the temporary pit, permanent pit, or below-grade tank. - NM Office of the State Engineer - iWATERS database search; USGS; Data obtained from nearby wells	<input type="checkbox"/> Yes <input checked="" type="checkbox"/> No
Within 300 feet of a continuously flowing watercourse, or 200 feet of any other significant watercourse or lakebed, sinkhole, or playa lake (measured from the ordinary high-water mark). - Topographic map; Visual inspection (certification) of the proposed site	<input type="checkbox"/> Yes <input checked="" type="checkbox"/> No
Within 300 feet from a permanent residence, school, hospital, institution, or church in existence at the time of initial application. (Applies to temporary, emergency, or cavitation pits and below-grade tanks) - Visual inspection (certification) of the proposed site; Aerial photo; Satellite image	<input type="checkbox"/> Yes <input checked="" type="checkbox"/> No <input type="checkbox"/> NA
Within 1000 feet from a permanent residence, school, hospital, institution, or church in existence at the time of initial application. (Applies to permanent pits) - Visual inspection (certification) of the proposed site; Aerial photo; Satellite image	<input type="checkbox"/> Yes <input type="checkbox"/> No <input checked="" type="checkbox"/> NA
Within 500 horizontal feet of a private, domestic fresh water well or spring that less than five households use for domestic or stock watering purposes, or within 1000 horizontal feet of any other fresh water well or spring, in existence at the time of initial application. - NM Office of the State Engineer - iWATERS database search; Visual inspection (certification) of the proposed site	<input type="checkbox"/> Yes <input checked="" type="checkbox"/> No
Within incorporated municipal boundaries or within a defined municipal fresh water well field covered under a municipal ordinance adopted pursuant to NMSA 1978, Section 3-27-3, as amended. - Written confirmation or verification from the municipality; Written approval obtained from the municipality	<input type="checkbox"/> Yes <input checked="" type="checkbox"/> No
Within 500 feet of a wetland. - US Fish and Wildlife Wetland Identification map; Topographic map; Visual inspection (certification) of the proposed site	<input type="checkbox"/> Yes <input checked="" type="checkbox"/> No
Within the area overlying a subsurface mine. - Written confirmation or verification or map from the NM EMNRD-Mining and Mineral Division	<input type="checkbox"/> Yes <input checked="" type="checkbox"/> No
Within an unstable area. - Engineering measures incorporated into the design; NM Bureau of Geology & Mineral Resources; USGS; NM Geological Society; Topographic map	<input type="checkbox"/> Yes <input checked="" type="checkbox"/> No
Within a 100-year floodplain. - FEMA map	<input type="checkbox"/> Yes <input checked="" type="checkbox"/> No

11.

**Temporary Pits, Emergency Pits, and Below-grade Tanks Permit Application Attachment Checklist:** Subsection B of 19.15.17.9 NMAC**Instructions:** Each of the following items must be attached to the application. Please indicate, by a check mark in the box, that the documents are attached.

- ☒ Hydrogeologic Report (Below-grade Tanks) - based upon the requirements of Paragraph (4) of Subsection B of 19.15.17.9 NMAC
- ☒ Hydrogeologic Data (Temporary and Emergency Pits) - based upon the requirements of Paragraph (2) of Subsection B of 19.15.17.9 NMAC
- ☒ Siting Criteria Compliance Demonstrations - based upon the appropriate requirements of 19.15.17.10 NMAC
- ☒ Design Plan - based upon the appropriate requirements of 19.15.17.11 NMAC
- ☒ Operating and Maintenance Plan - based upon the appropriate requirements of 19.15.17.12 NMAC
- ☒ Closure Plan (Please complete Boxes 14 through 18, if applicable) - based upon the appropriate requirements of Subsection C of 19.15.17.9 NMAC and 19.15.17.13 NMAC

☐ Previously Approved Design (attach copy of design) API Number: \_\_\_\_\_ or Permit Number: \_\_\_\_\_

12.

**Closed-loop Systems Permit Application Attachment Checklist:** Subsection B of 19.15.17.9 NMAC**Instructions:** Each of the following items must be attached to the application. Please indicate, by a check mark in the box, that the documents are attached.

- ☐ Geologic and Hydrogeologic Data (only for on-site closure) - based upon the requirements of Paragraph (3) of Subsection B of 19.15.17.9
- ☐ Siting Criteria Compliance Demonstrations (only for on-site closure) - based upon the appropriate requirements of 19.15.17.10 NMAC
- ☐ Design Plan - based upon the appropriate requirements of 19.15.17.11 NMAC
- ☐ Operating and Maintenance Plan - based upon the appropriate requirements of 19.15.17.12 NMAC
- ☐ Closure Plan (Please complete Boxes 14 through 18, if applicable) - based upon the appropriate requirements of Subsection C of 19.15.17.9 NMAC and 19.15.17.13 NMAC

☐ Previously Approved Design (attach copy of design) API Number: \_\_\_\_\_

☐ Previously Approved Operating and Maintenance Plan API Number: \_\_\_\_\_ (Applies only to closed-loop system that use above ground steel tanks or haul-off bins and propose to implement waste removal for closure)

13.

**Permanent Pits Permit Application Checklist:** Subsection B of 19.15.17.9 NMAC**Instructions:** Each of the following items must be attached to the application. Please indicate, by a check mark in the box, that the documents are attached.

- ☐ Hydrogeologic Report - based upon the requirements of Paragraph (1) of Subsection B of 19.15.17.9 NMAC
- ☐ Siting Criteria Compliance Demonstrations - based upon the appropriate requirements of 19.15.17.10 NMAC
- ☐ Climatological Factors Assessment
- ☐ Certified Engineering Design Plans - based upon the appropriate requirements of 19.15.17.11 NMAC
- ☐ Dike Protection and Structural Integrity Design - based upon the appropriate requirements of 19.15.17.11 NMAC
- ☐ Leak Detection Design - based upon the appropriate requirements of 19.15.17.11 NMAC
- ☐ Liner Specifications and Compatibility Assessment - based upon the appropriate requirements of 19.15.17.11 NMAC
- ☐ Quality Control/Quality Assurance Construction and Installation Plan
- ☐ Operating and Maintenance Plan - based upon the appropriate requirements of 19.15.17.12 NMAC
- ☐ Freeboard and Overtopping Prevention Plan - based upon the appropriate requirements of 19.15.17.11 NMAC
- ☐ Nuisance or Hazardous Odors, including H<sub>2</sub>S, Prevention Plan
- ☐ Emergency Response Plan
- ☐ Oil Field Waste Stream Characterization
- ☐ Monitoring and Inspection Plan
- ☐ Erosion Control Plan
- ☐ Closure Plan - based upon the appropriate requirements of Subsection C of 19.15.17.9 NMAC and 19.15.17.13 NMAC

14.

**Proposed Closure:** 19.15.17.13 NMAC**Instructions:** Please complete the applicable boxes, Boxes 14 through 18, in regards to the proposed closure plan.

Type: ☒ Drilling ☐ Workover ☐ Emergency ☐ Cavitation ☐ P&A ☐ Permanent Pit ☐ Below-grade Tank ☐ Closed-loop System

☐ Alternative

Proposed Closure Method: ☐ Waste Excavation and Removal

☐ Waste Removal (Closed-loop systems only)

☒ On-site Closure Method (Only for temporary pits and closed-loop systems)

☐ In-place Burial ☐ On-site Trench Burial

☐ Alternative Closure Method (Exceptions must be submitted to the Santa Fe Environmental Bureau for consideration)

15.

**Waste Excavation and Removal Closure Plan Checklist:** (19.15.17.13 NMAC) **Instructions:** Each of the following items must be attached to the closure plan. Please indicate, by a check mark in the box, that the documents are attached.

- ☐ Protocols and Procedures - based upon the appropriate requirements of 19.15.17.13 NMAC
- ☐ Confirmation Sampling Plan (if applicable) - based upon the appropriate requirements of Subsection F of 19.15.17.13 NMAC
- ☐ Disposal Facility Name and Permit Number (for liquids, drilling fluids and drill cuttings)
- ☐ Soil Backfill and Cover Design Specifications - based upon the appropriate requirements of Subsection H of 19.15.17.13 NMAC
- ☐ Re-vegetation Plan - based upon the appropriate requirements of Subsection I of 19.15.17.13 NMAC
- ☐ Site Reclamation Plan - based upon the appropriate requirements of Subsection G of 19.15.17.13 NMAC

16.

**Waste Removal Closure For Closed-loop Systems That Utilize Above Ground Steel Tanks or Haul-off Bins Only:** (19.15.17.13.D NMAC)

**Instructions:** Please identify the facility or facilities for the disposal of liquids, drilling fluids and drill cuttings. Use attachment if more than two facilities are required.

Disposal Facility Name: \_\_\_\_\_ Disposal Facility Permit Number: \_\_\_\_\_

Disposal Facility Name: \_\_\_\_\_ Disposal Facility Permit Number: \_\_\_\_\_

Will any of the proposed closed-loop system operations and associated activities occur on or in areas that *will not* be used for future service and operations?

☐ Yes (If yes, please provide the information below) ☐ No

*Required for impacted areas which will not be used for future service and operations:*

☐ Soil Backfill and Cover Design Specifications - based upon the appropriate requirements of Subsection H of 19.15.17.13 NMAC

☐ Re-vegetation Plan - based upon the appropriate requirements of Subsection I of 19.15.17.13 NMAC

☐ Site Reclamation Plan - based upon the appropriate requirements of Subsection G of 19.15.17.13 NMAC

17.

**Siting Criteria (regarding on-site closure methods only):** 19.15.17.10 NMAC

**Instructions:** Each siting criteria requires a demonstration of compliance in the closure plan. Recommendations of acceptable source material are provided below. Requests regarding changes to certain siting criteria may require administrative approval from the appropriate district office or may be considered an exception which must be submitted to the Santa Fe Environmental Bureau office for consideration of approval. Justifications and/or demonstrations of equivalency are required. Please refer to 19.15.17.10 NMAC for guidance.

Ground water is less than 50 feet below the bottom of the buried waste.

- NM Office of the State Engineer - iWATERS database search; USGS; Data obtained from nearby wells

☐ Yes ☒ No

☐ NA

Ground water is between 50 and 100 feet below the bottom of the buried waste

- NM Office of the State Engineer - iWATERS database search; USGS; Data obtained from nearby wells

☐ Yes ☒ No

☐ NA

Ground water is more than 100 feet below the bottom of the buried waste.

- NM Office of the State Engineer - iWATERS database search; USGS; Data obtained from nearby wells

☒ Yes ☐ No

☐ NA

Within 300 feet of a continuously flowing watercourse, or 200 feet of any other significant watercourse or lakebed, sinkhole, or playa lake (measured from the ordinary high-water mark).

- Topographic map; Visual inspection (certification) of the proposed site

☐ Yes ☒ No

Within 300 feet from a permanent residence, school, hospital, institution, or church in existence at the time of initial application.

- Visual inspection (certification) of the proposed site; Aerial photo; Satellite image

☐ Yes ☒ No

Within 500 horizontal feet of a private, domestic fresh water well or spring that less than five households use for domestic or stock watering purposes, or within 1000 horizontal feet of any other fresh water well or spring, in existence at the time of initial application.

- NM Office of the State Engineer - iWATERS database; Visual inspection (certification) of the proposed site

☐ Yes ☒ No

Within incorporated municipal boundaries or within a defined municipal fresh water well field covered under a municipal ordinance adopted pursuant to NMSA 1978, Section 3-27-3, as amended.

- Written confirmation or verification from the municipality; Written approval obtained from the municipality

☐ Yes ☒ No

Within 500 feet of a wetland.

- US Fish and Wildlife Wetland Identification map; Topographic map; Visual inspection (certification) of the proposed site

☐ Yes ☒ No

Within the area overlying a subsurface mine.

- Written confirmation or verification or map from the NM EMNRD-Mining and Mineral Division

☐ Yes ☒ No

Within an unstable area.

- Engineering measures incorporated into the design; NM Bureau of Geology & Mineral Resources; USGS; NM Geological Society; Topographic map

☐ Yes ☒ No

Within a 100-year floodplain.

- FEMA map

☐ Yes ☒ No

18.

**On-Site Closure Plan Checklist:** (19.15.17.13 NMAC) **Instructions:** Each of the following items must be attached to the closure plan. Please indicate, by a check mark in the box, that the documents are attached.

☒ Siting Criteria Compliance Demonstrations - based upon the appropriate requirements of 19.15.17.10 NMAC

☒ Proof of Surface Owner Notice - based upon the appropriate requirements of Subsection F of 19.15.17.13 NMAC

☐ Construction/Design Plan of Burial Trench (if applicable) based upon the appropriate requirements of 19.15.17.11 NMAC

☒ Construction/Design Plan of Temporary Pit (for in-place burial of a drying pad) - based upon the appropriate requirements of 19.15.17.11 NMAC

☒ Protocols and Procedures - based upon the appropriate requirements of 19.15.17.13 NMAC

☒ Confirmation Sampling Plan (if applicable) - based upon the appropriate requirements of Subsection F of 19.15.17.13 NMAC

☒ Waste Material Sampling Plan - based upon the appropriate requirements of Subsection F of 19.15.17.13 NMAC

☒ Disposal Facility Name and Permit Number (for liquids, drilling fluids and drill cuttings or in case on-site closure standards cannot be achieved)

☒ Soil Cover Design - based upon the appropriate requirements of Subsection H of 19.15.17.13 NMAC

☒ Re-vegetation Plan - based upon the appropriate requirements of Subsection I of 19.15.17.13 NMAC

☒ Site Reclamation Plan - based upon the appropriate requirements of Subsection G of 19.15.17.13 NMAC

19.

**Operator Application Certification:**

I hereby certify that the information submitted with this application is true, accurate and complete to the best of my knowledge and belief.

Name (Print): Michael K. Lane Title: Sr. EH & S Specialist

Signature: \_\_\_\_\_ Date: \_\_\_\_\_

e-mail address: myke.lane@williams.com Telephone: 505-634-4219

20.

**OCD Approval:** ☒ Permit Application (including closure plan) ☐ Closure Plan (only) ☐ OCD Conditions (see attachment)

OCD Representative Signature: [Signature] Approval Date: 4-9-10

Title: Enviro Spec OCD Permit Number: \_\_\_\_\_

21.

**Closure Report (required within 60 days of closure completion):** Subsection K of 19.15.17.13 NMAC

*Instructions: Operators are required to obtain an approved closure plan prior to implementing any closure activities and submitting the closure report. The closure report is required to be submitted to the division within 60 days of the completion of the closure activities. Please do not complete this section of the form until an approved closure plan has been obtained and the closure activities have been completed.*

☐ Closure Completion Date: \_\_\_\_\_

22.

**Closure Method:**

☐ Waste Excavation and Removal ☐ On-Site Closure Method ☐ Alternative Closure Method ☐ Waste Removal (Closed-loop systems only)  
☐ If different from approved plan, please explain.

23.

**Closure Report Regarding Waste Removal Closure For Closed-loop Systems That Utilize Above Ground Steel Tanks or Haul-off Bins Only:**

*Instructions: Please identify the facility or facilities for where the liquids, drilling fluids and drill cuttings were disposed. Use attachment if more than two facilities were utilized.*

Disposal Facility Name: \_\_\_\_\_ Disposal Facility Permit Number: \_\_\_\_\_

Disposal Facility Name: \_\_\_\_\_ Disposal Facility Permit Number: \_\_\_\_\_

Were the closed-loop system operations and associated activities performed on or in areas that *will not* be used for future service and operations?

☐ Yes (If yes, please demonstrate compliance to the items below) ☐ No

*Required for impacted areas which will not be used for future service and operations:*

- ☐ Site Reclamation (Photo Documentation)  
☐ Soil Backfilling and Cover Installation  
☐ Re-vegetation Application Rates and Seeding Technique

24.

**Closure Report Attachment Checklist:** *Instructions: Each of the following items must be attached to the closure report. Please indicate, by a check mark in the box, that the documents are attached.*

- ☐ Proof of Closure Notice (surface owner and division)  
☐ Proof of Deed Notice (required for on-site closure)  
☐ Plot Plan (for on-site closures and temporary pits)  
☐ Confirmation Sampling Analytical Results (if applicable)  
☐ Waste Material Sampling Analytical Results (required for on-site closure)  
☐ Disposal Facility Name and Permit Number  
☐ Soil Backfilling and Cover Installation  
☐ Re-vegetation Application Rates and Seeding Technique  
☐ Site Reclamation (Photo Documentation)

On-site Closure Location: Latitude \_\_\_\_\_ Longitude \_\_\_\_\_ NAD: ☐ 1927 ☐ 1983

25.

**Operator Closure Certification:**

I hereby certify that the information and attachments submitted with this closure report is true, accurate and complete to the best of my knowledge and belief. I also certify that the closure complies with all applicable closure requirements and conditions specified in the approved closure plan.

Name (Print): Michael K. Lane Title: EH&S Specialist

Signature: [Signature] Date: 2/16/2010

e-mail address: Myke.Lane@Williams.com Telephone: 505-634-4219

District I  
1525 N. French Dr., Hobbs, NM 88240

District II  
1301 W. Grand Avenue, Artesia, NM 88210

District III  
1000 Rio Brazos Rd., Aztec, NM 87410

District IV  
1220 S. St. Francis Dr., Santa Fe, NM 87505

State of New Mexico  
Energy, Minerals & Natural Resources Department

OIL CONSERVATION DIVISION  
1220 South St. Francis Dr.  
Santa Fe, NM 87505

Form C-102  
Revised October 12, 2005

Instructions on back  
Submit to Appropriate District Office  
State Lease - 4 Copies  
Fee Lease - 3 Copies

☐ AMENDED REPORT

### WELL LOCATION AND ACREAGE DEDICATION PLAT

<sup>1</sup> API Number	<sup>2</sup> Pool Code 97232 / 72319 / 71599	<sup>3</sup> Pool Name BASIN MANCOS / BLANCO MESAVERDE / BASIN DAKOTA
<sup>4</sup> Property Code 17033	<sup>5</sup> Property Name ROSA UNIT	<sup>6</sup> Well Number 750
<sup>7</sup> GRID No. 120782	<sup>8</sup> Operator Name WILLIAMS PRODUCTION COMPANY	<sup>9</sup> Elevation 6294'

#### <sup>10</sup> Surface Location

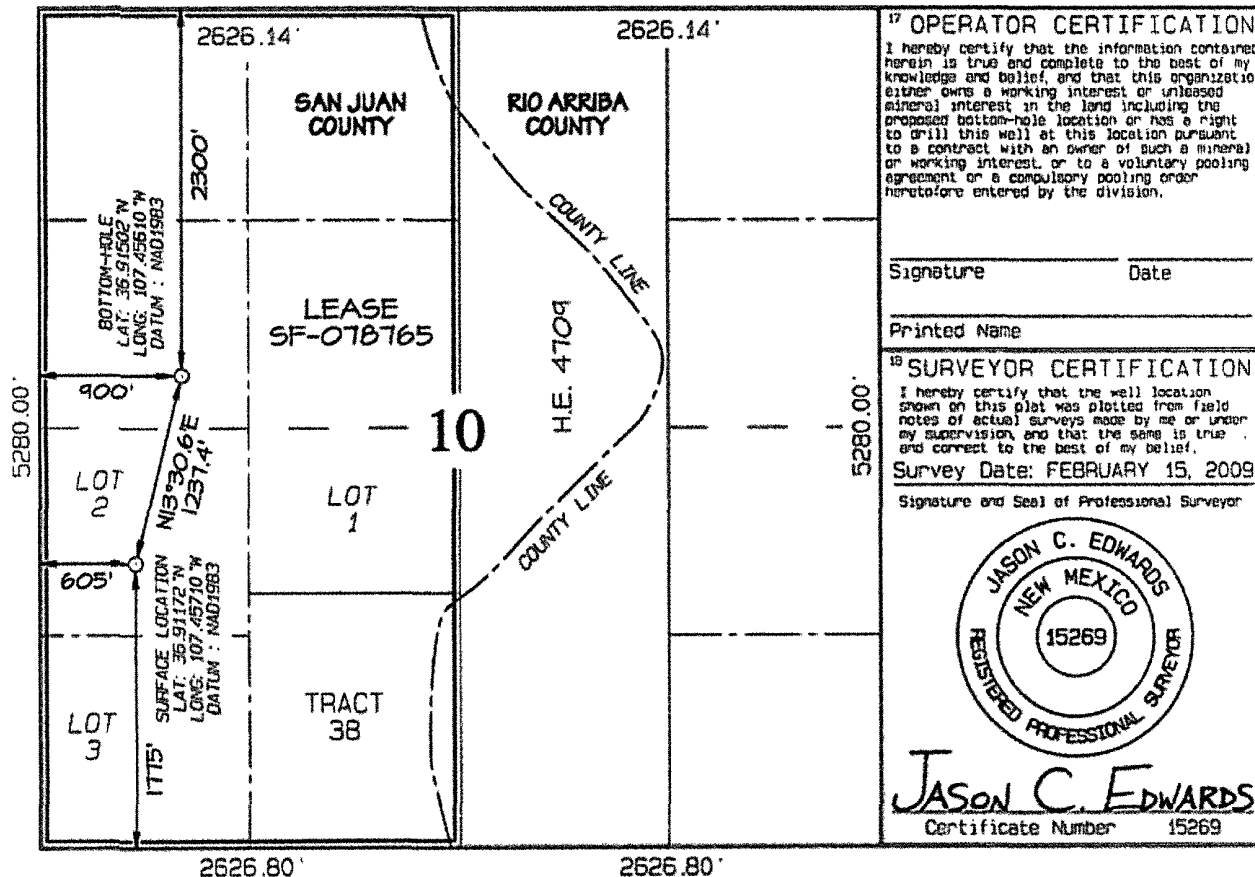
U. or lot no.	Section	Township	Range	Lot 1st	Feet from the	North/South line	Feet from the	East/West line	County
L	10	31N	6W		1775	SOUTH	605	WEST	SAN JUAN

#### <sup>11</sup> Bottom Hole Location If Different From Surface

U. or lot no.	Section	Township	Range	Lot 1st	Feet from the	North/South line	Feet from the	East/West line	County
E	10	31N	6W		2300	NORTH	900	WEST	SAN JUAN

<sup>12</sup> Dedicated Acres 320.0 ACRES - (W/2)	<sup>13</sup> Joint or Thrift	<sup>14</sup> Consolidation Code	<sup>15</sup> Order No.
--	-------------------------------	----------------------------------	-------------------------

NO ALLOWABLE WILL BE ASSIGNED TO THIS COMPLETION UNTIL ALL INTERESTS HAVE BEEN CONSOLIDATED  
OR A NON-STANDARD UNIT HAS BEEN APPROVED BY THE DIVISION



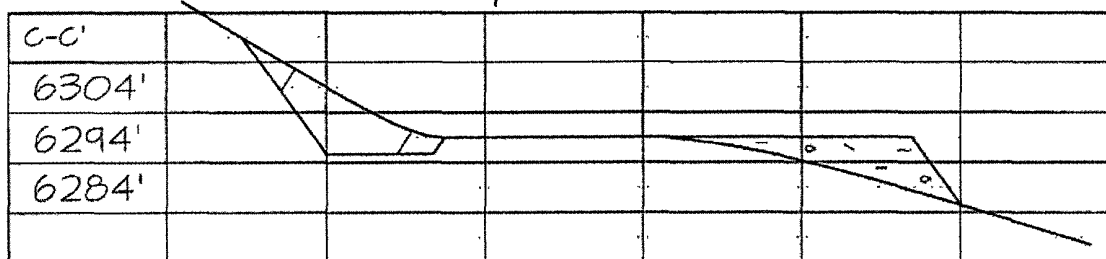
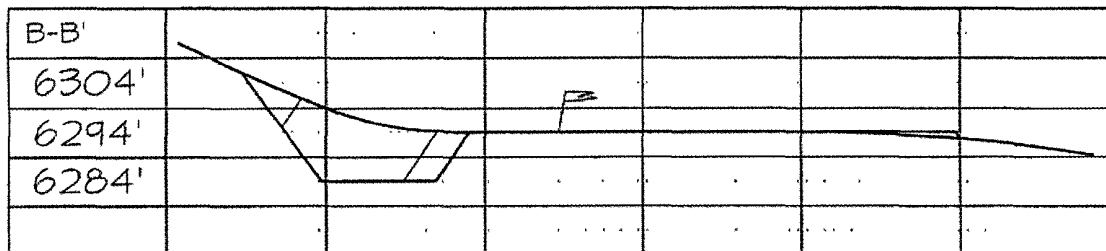
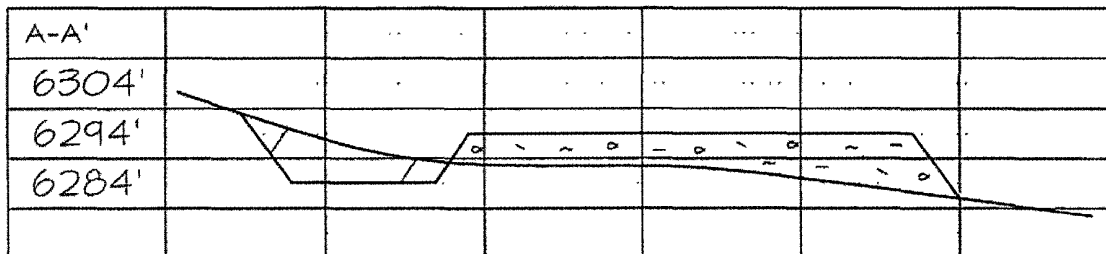
**WILLIAMS PRODUCTION COMPANY ROSA UNIT #75D**  
**1775' FSL & 605' FWL, SECTION 10, T31N, R6W, NMPM**  
**SAN JUAN COUNTY, NEW MEXICO ELEVATION: 6294'**

**LATITUDE: 36.91172° N**  
**LONGITUDE: 107.45710° W**  
 DATUM : NAD1983

The diagram shows a rectangular site area bounded by survey points A, B, C, D, A', B', C', and D'. Key features include:

- RESERVE PIT 70' X 140'**: Located near corner A, containing a **CENTER RESERVE PIT** with coordinates LAT: 36.91187° N, LONG: 107.45726° W, DATUM: NAD1983.
- DRAIN TO RESERVE**: Indicated by dashed lines from the wellheads to the reserve pit.
- BLOW PIT**: Located near corner C.
- LAYDOWN N75°E 150'**: A path or boundary line running parallel to the top edge.
- Wellheads**: MPX ROSA UNIT #261, #75C, and #75B are shown with their respective locations relative to the center reserve pit.
- METER RUN**: A line connecting the wellheads to the separator and tank area.
- SEPARATOR** and **TANK**: Located in the lower right portion of the site.
- EXISTING ROADWAY**: Shown along the left and bottom edges of the site.
- Survey Points**: Various points labeled A, B, C, D, A', B', C', D', F6, F13, F14, and C20 are marked around the perimeter.
- Legend**: Includes symbols for METER ASSEMBLY, CATHODIC PROTECTION GROUNDBED, and STATION.

Steel T-Posts have been set to define the Edge of Disturbance limits which are 50' offset from the edge of the staked wellpad.



CHECKED BY: JCE

**Williams Production Co., LLC**  
**San Juan Basin: New Mexico Assets**  
Temporary Pit In-place Closure Report  
Drilling/Completion and Workover  
(Groundwater >100 feet bgs)

**Well:** Rosa Unit #075D  
**API No:** 30-04534964  
**Location:** L-S10-T31N-R06W, NMPM

In accordance with Rule 19.15.17.13 NMAC, the following plan describes the general in-place closure requirements of temporary pits on Williams Production Co, LLC (WPX) locations in the San Juan Basin of New Mexico. This is WPX's standard procedure for all temporary pits to be utilized for the drilling, completion and/or workovers of oil and gas wells operated by WPX. For those temporary pits which do not conform to this standard closure plan, a separate well/pit specific closure plan will be developed and utilized.

All closure activities will include proper documentation and will be submitted to OCD within 60 days of the pit closure on a Closure Report using Division Form C-144. The Report will include the following:

- Details on Capping and Covering, where applicable
- Plot Plan (Pit Diagram)
- Inspection reports
- Sampling Results
- Division Form C-105: WELL COMPLETION OR RECOMPLETION REPORT AND LOG
- Copy of Deed Notice filed with the County Clerk (format to meet County requirements)  
A deed notice is not required on state, federal or tribal land according to NMOCD FAQ dated October 30, 2008 and posted on the NMOCD website.

General Plan Requirements:

1. All free standing liquids will be removed from the pit at the start of the closure process. Liquids will be removed in a manner that the appropriate District Office approves including; recycled, reused, reclaimed, evaporated, and/or disposed of in a Division-approved facility. Once all free liquids are removed, the sludge will be stabilized by one of the following methods depending on equipment availability: blending with clean stockpiled soils or dewatering using a Bowl Decanter Centrifuge then blending with clean stockpiles soils.

To the extent practical, free liquids were pulled from the reserve pit following the completion rigoff. Haul dates 10/1/2009

2. The preferred method of closure for all temporary pits will be on-site closure by in-place burial, provided all the criteria in 19.15.17.13.B are met.

On-site burial plan for this location was approved by the Aztec District Office on 5/21/2009)

3. The surface owner shall be notified of WPX's proposed closure plan using a means that provides proof of notice (i.e. certified mail/return receipt requested)  
Williams notified the SMA of its intent to use a temporary pit and onsite burial in the Surface Use Plan in the well APD. The SMA was notified by email see attached. No return receipt required per BLM:FFO/NMOCD MOU dated 5/4/09.

4. Within six months of the "rig-off" status occurring WPX will ensure that the temporary pit is covered, recontoured and reseeded in progress.  
Drill rig-off (7/3/2009). Request for transfer to completion rig submitted (7/29/2009) to OCD Aztec District Office, Completion rig-off (9/23/2009). Pit covered (10/30/2009). Pit area along with unused portions of well pad to be interim reclaimed in accordance with Surface Management Agency requirements in APD-COAs and per BLM:FFO/NMOCD MOU dated 5/4/09.

5. Notice of Closure will be given to the Aztec District office between 72 hours and one week of the scheduled closure via email or phone. The notification of closure will include the following:
  - a. Operators Name (WPX)
  - b. Well Name and API Number
  - c. Location (USTR)

The Aztec District Office of NMOCD was notified by email using a format acceptable to the District. Copies of the notification from Abode Contractors on 10/9/2009) is attached.



6. The pit liner shall be removed above "mud level" after stabilization. Removal of the liner will consist of manually or mechanically cutting the liner at the mud level and removing all remaining liner. Care will be taken to remove "all" of the liner (i.e. anchored material). All excessive liner will be disposed of at a licensed disposal facility (probably San Juan Regional Landfill operated by Waste Management under NMED Permit SWM-052426).

The liner to the temporary pit was removed above the "mud level" once stabilized. Removal of the liner consisted of manually cutting the liner and removing all remaining liner material above the "mud level" including the anchor material. All excessive liner was disposed of at the San Juan Regional Landfill operated by Waste Management under NMED Permit SWM-052426.

7. Solidification of the remaining pit contents shall be achieved by mixing non-waste containing, earthen material. The solidification process will be accomplished use a combination of natural drying and mechanical mixing. Pit contents will be mixed with non-waste, earthen material to a consistency that is deemed safe and stable. The mixing ratio shall not exceed 3 parts non-waste to 1 part pit contents.

Following removal of free liquids, the pit contents were mixed with non-waste containing, earthen material in order to achieve appropriate solidification and a consistency that was deemed safe and stable. The solidification process was accomplished using a combination of natural drying, and mechanically mixing using a dozer and trackhoe. The mixing ration was approximately 2.5-3 parts native soil to 1 part pit contents. Solidification was completed (10/30/2009).

8. A five-point composite sample will be taken of the pit using sampling tools and all samples tested per 19.15.17.13(B)(1)(b) NMAC. In the event that the criteria are not met (See Table 1), all contents will be handled per 19.15.17.13(B)(1)(a) (i.e. dig and haul to a Division-approved facility). Approval to haul will be requested of the Aztec District office prior to initiation.

A five-point composite sampling was taken of the pit area using sampling tools and the sample was tested per 19.15.17.13(B)(1)(b) NMAC. Results are shown in Table 1 and lab reports are attached.

Table 1: Closure Criteria for Temporary Pits in Non-sensitive Areas with Groundwater >100 bgs.

Components	Testing Methods	Limits (mg/Kg)	Pit (mg/Kg)
Benzene	EPA SW-846 Method 8021B or 8260B	0.2	ND
BTEX	EPA SW-846 Method 8021B or 8260B	50	ND
TPH	EPA SW-846 Method 418.1	2500	29.3
GRO/DRO	EPA SW-846 Method 8015M (GRO/DRO)	500	ND
Chlorides	EPA SW-846 Method 300.1	500	25

9. Upon completion of solidification and testing, the pit area will be backfilled with non-waste earthen material compacted to native conditions to enable effective revegetation for successful evapotranspiration. A minimum of four feet of cover including replacement of one foot of suitable material to establish vegetation, or the background thickness of topsoil, whichever is greater.

Upon completion of solidification and testing, the pit area was backfilled with non-waste earthen material compacted to native conditions. A minimum of four feet of cover to the extent practical was achieved and the cover included just over a foot of topsoil suitable to establish vegetation.

10. Following cover, the site will be recontoured to meet the Surface Management Agency or surface owner requirements. Re-contouring will attempt to match fit, shape, line form, and texture of the surrounding geography. Re-shaping will include drainage control, prevent ponding, and minimize erosion. Natural drainages will be unimpeded and stormwater Best Management Practices (BMPs) will be used to aid in soil stabilization and protection surface water quality.

Following cover, Williams reestablished drainage and contours to approximately match previous topography meeting the Conditions of Approval in the APD and the direction offered by a BLM/USFS inspector. Cover and re-contouring were completed (10/30/2009).

11. Notification will be sent to the Aztec District office when the reclaimed area is seeded. Williams will comply with Surface Management Agency reseeding requirements in the COAs of the APD for the referenced well, per BLM:FFO/NMOCD MOU dated 5/4/09.

12. WPX shall seed the disturbed areas the first growing season after the pit is covered. Seeding will be accomplished via drilling on the contour whenever practical, or by other Division-approved methods. Vegetative cover will equal 70% of the native perennial vegetative cover (un-impacted) consisting of at least three native plant species, including at least one grass, but not including noxious weeds, and maintained that cover through two successive growing seasons. Repeat seeding or planting will be continued until successful vegetative growth

occurs. *Note: WPX assumes the seeding stipulations including mix and seeding methods specified by the Surface Management Agency (BLM, BOR, USFS, Tribal, etc.) or Land owner as part of a surface use agreement or APD are Division-approved methods unless notified by the Division of their unacceptability.*

Williams will comply with Surface Management Agency reseeding requirements in the COAs of the APD for the referenced well, per BLM:FFO/NMOCD MOU dated 5/4/09.

13. The temporary pit will be located with a steel marker, no less than four inches in diameter, cemented in a hole three feet deep in the center of the on site burial upon the abandonment of all wells on the pad. The marker will be flush with the ground to allow access of the active well pad and for safety concerns. The marker will include a threaded collar to be used for future abandonment. The top of the marker will contain a welded steel 12" square plate that indicates the on site burial of the temporary pit. The plate will be easily removable and a four-foot tall riser will be threaded into the top of the collar marker and welded around the base with the operations information at the time of all wells on the pad abandoned. The information will include Operator Name, Lease Name, Well Name, and number, USTR, and an indicator that the marker is an onsite pit burial location.

The temporary pit was located with a steel marker meeting the above listed specifications. The marker has the following information welded for future reference: Williams Production, NMSF-078765, S10-T31N-R06W-L, "Pit Burial" (photo attached). Steel marker set (11/20/2009).

Submit To Appropriate District Office Two Copies <b>District I</b> 1625 N. French Dr., Hobbs, NM 88240 <b>District II</b> 1301 W. Grand Avenue, Artesia, NM 88210 <b>District III</b> 1000 Rio Brazos Rd., Aztec, NM 87410 <b>District IV</b> 1220 S. St. Francis Dr., Santa Fe, NM 87505	<b>State of New Mexico</b> <b>Energy, Minerals and Natural Resources</b>  <b>Oil Conservation Division</b> <b>1220 South St. Francis Dr.</b> <b>Santa Fe, NM 87505</b>	<b>Form C-105</b> July 17, 2008								
		1. WELL API NO. 3004534964								
		2. Type of Lease <input type="checkbox"/> STATE <input type="checkbox"/> FEE <input checked="" type="checkbox"/> FED/INDIAN								
		3. State Oil & Gas Lease No. NMSF 078765								
<b>WELL COMPLETION OR RECOMPLETION REPORT AND LOG</b>										
4. Reason for filing:  <input type="checkbox"/> <b>COMPLETION REPORT</b> (Fill in boxes #1 through #31 for State and Fee wells only)  <input checked="" type="checkbox"/> <b>C-144 CLOSURE ATTACHMENT</b> (Fill in boxes #1 through #9, #15 Date Rig Released and #32 and/or #33; attach this and the plat to the C-144 closure report in accordance with 19.15.17.13.K NMAC)		5. Lease Name or Unit Agreement Name Rosa Unit								
		6. Well Number: 075D								
7. Type of Completion: <input checked="" type="checkbox"/> NEW WELL <input type="checkbox"/> WORKOVER <input type="checkbox"/> DEEPENING <input type="checkbox"/> PLUGBACK <input type="checkbox"/> DIFFERENT RESERVOIR <input type="checkbox"/> OTHER										
8. Name of Operator    WILLIAMS PRODUCTION, LLC		9. OGRID    120782								
10. Address of Operator    P.O. BOX 640    AZTEC, NM 87410		11. Pool name or Wildcat								
12. Location	Unit Ltr	Section	Township	Range	Lot	Feet from the	N/S Line	Feet from the	E/W Line	County
Surface:										
BH:										
13. Date Spudded	14. Date T.D. Reached	15. Date Rig Released 9/23/2009		16. Date Completed (Ready to Produce)			17. Elevations (DF and RKB, RT, GR, etc.)			
18. Total Measured Depth of Well		19. Plug Back Measured Depth		20. Was Directional Survey Made?			21. Type Electric and Other Logs Run			
22. Producing Interval(s), of this completion - Top, Bottom, Name										
<b>23. CASING RECORD (Report all strings set in well)</b>										
CASING SIZE		WEIGHT LB./FT.		DEPTH SET		HOLE SIZE		CEMENTING RECORD		AMOUNT PULLED
24. LINER RECORD						25. TUBING RECORD				
SIZE	TOP	BOTTOM	SACKS CEMENT	SCREEN		SIZE	DEPTH SET	PACKER SET		
26. Perforation record (interval, size, and number)						27. ACID, SHOT, FRACTURE, CEMENT, SQUEEZE, ETC.				
						DEPTH INTERVAL		AMOUNT AND KIND MATERIAL USED		
<b>28. PRODUCTION</b>										
Date First Production		Production Method ( <i>Flowing, gas lift, pumping - Size and type pump</i> )					Well Status ( <i>Prod. or Shut-in</i> )			
Date of Test	Hours Tested	Choke Size	Prod'n For Test Period	Oil - Bbl	Gas - MCF	Water - Bbl.	Gas - Oil Ratio			
Flow Tubing Press.	Casing Pressure	Calculated 24-Hour Rate	Oil - Bbl.	Gas - MCF	Water - Bbl.	Oil Gravity - API - ( <i>Corr.</i> )				
29. Disposition of Gas ( <i>Sold, used for fuel, vented, etc.</i> )								30. Test Witnessed By		
31. List Attachments										
32. If a temporary pit was used at the well, attach a plat with the location of the temporary pit.										
33. If an on-site burial was used at the well, report the exact location of the on-site burial:										
Latitude 36.91187 Longitude -107.45726 NAD 1927 1983										
<i>I hereby certify that the information shown on both sides of this form is true and complete to the best of my knowledge and belief</i>										
Printed										
Signature			Name			Title			Date	
			Tasha Meador			EH&S Coordinator				
E-mail Address: tasha.meador@williams.com										



EPA METHOD 8015 Modified  
Nonhalogenated Volatile Organics  
Total Petroleum Hydrocarbons

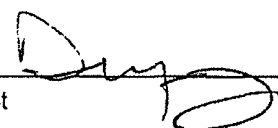
Client:	WPX	Project #:	04108-0003
Sample ID:	Reserve Pit	Date Reported:	12-07-09
Laboratory Number:	52595	Date Sampled:	11-25-09
Chain of Custody No:	8500	Date Received:	12-01-09
Sample Matrix:	Soil	Date Extracted:	12-02-09
Preservative:	Cool	Date Analyzed:	12-03-09
Condition:	Intact	Analysis Requested:	8015 TPH

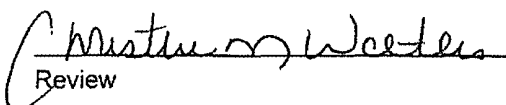
Parameter	Concentration (mg/Kg)	Det. Limit (mg/Kg)
Gasoline Range (C5 - C10)	ND	0.2
Diesel Range (C10 - C28)	ND	0.1
Total Petroleum Hydrocarbons	ND	0.2

ND - Parameter not detected at the stated detection limit.

References: Method 8015B, Nonhalogenated Volatile Organics, Test Methods for Evaluating Solid Waste, SW-846, USEPA, December 1996.

Comments: Rosa Unit #75D

  
Analyst

  
Review

**EPA Method 8015 Modified  
 Nonhalogenated Volatile Organics  
 Total Petroleum Hydrocarbons**

**Quality Assurance Report**

Client:	QA/QC	Project #:	N/A
Sample ID:	12-03-09 QA/QC	Date Reported:	12-07-09
Laboratory Number:	52556	Date Sampled:	N/A
Sample Matrix:	Methylene Chloride	Date Received:	N/A
Preservative:	N/A	Date Analyzed:	12-03-09
Condition:	N/A	Analysis Requested:	TPH

	I-Cal Date	I-Cal RF	C-Cal RF	% Difference	Accept Range
Gasoline Range C5 - C10	05-07-07	1.0866E+003	1.0870E+003	0.04%	0 - 15%
Diesel Range C10 - C28	05-07-07	9.2999E+002	9.3036E+002	0.04%	0 - 15%

Blank Conc. (mg/L - mg/Kg)	Concentration	Detection Limit
Gasoline Range C5 - C10	ND	0.2
Diesel Range C10 - C28	ND	0.1
Total Petroleum Hydrocarbons	ND	0.2

Duplicate Conc. (mg/Kg)	Sample	Duplicate	% Difference	Accept Range
Gasoline Range C5 - C10	ND	ND	0.0%	0 - 30%
Diesel Range C10 - C28	ND	ND	0.0%	0 - 30%

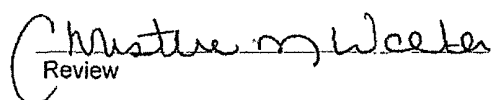
Spike Conc. (mg/Kg)	Sample	Spike Added	Spike Result	% Recovery	Accept Range
Gasoline Range C5 - C10	ND	250	247	98.8%	75 - 125%
Diesel Range C10 - C28	ND	250	257	103%	75 - 125%

ND - Parameter not detected at the stated detection limit.

References: Method 8015B, Nonhalogenated Volatile Organics, Test Methods for Evaluating Solid Waste, SW-846, USEPA, December 1996.

Comments: QA/QC for Samples 52556, 52587 - 52592, and 52594 - 52596.

Analyst 

Review 



EPA METHOD 8021  
AROMATIC VOLATILE ORGANICS

Client:	WPX	Project #:	04108-0003
Sample ID:	Reserve Pit	Date Reported:	12-07-09
Laboratory Number:	52595	Date Sampled:	11-25-09
Chain of Custody:	8500	Date Received:	12-01-09
Sample Matrix:	Soil	Date Analyzed:	12-03-09
Preservative:	Cool	Date Extracted:	12-02-09
Condition:	Intact	Analysis Requested:	BTEX

Parameter	Concentration (ug/Kg)	Det. Limit (ug/Kg)
Benzene	ND	0.9
Toluene	ND	1.0
Ethylbenzene	ND	1.0
p,m-Xylene	ND	1.2
o-Xylene	ND	0.9
Total BTEX	ND	

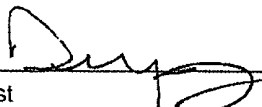
ND - Parameter not detected at the stated detection limit.

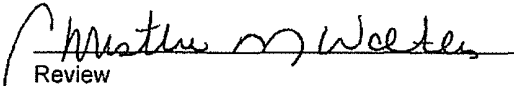
Surrogate Recoveries:	Parameter	Percent Recovery
	Fluorobenzene	98.0 %
	1,4-difluorobenzene	98.0 %
	Bromochlorobenzene	98.0 %

References: Method 5030B, Purge-and-Trap, Test Methods for Evaluating Solid Waste, SW-846, USEPA, December 1996.

Method 8021B, Aromatic Volatile Organics, Test Methods for Evaluating Solid Waste, SW-846, USEPA, December 1996.

Comments: Rosa Unit #75D

  
Analyst

  
Review

Client:	N/A	Project #:	N/A
Sample ID:	12-03-BT QA/QC	Date Reported:	12-07-09
Laboratory Number:	52587	Date Sampled:	N/A
Sample Matrix:	Soil	Date Received:	N/A
Preservative:	N/A	Date Analyzed:	12-03-09
Condition:	N/A	Analysis:	BTEX

Calibration and Detection Limits (ug/L)	I-Cal RF	C-Cal RF	%Diff	Blank Conc	Detect Limit
		Accept. Range 0 - 15%			
Benzene	1.4839E+006	1.4868E+006	0.2%	ND	0.1
Toluene	1.3799E+006	1.3827E+006	0.2%	ND	0.1
Ethylbenzene	1.2575E+006	1.2600E+006	0.2%	ND	0.1
p,m-Xylene	3.2090E+006	3.2155E+006	0.2%	ND	0.1
o-Xylene	1.1886E+006	1.1910E+006	0.2%	ND	0.1

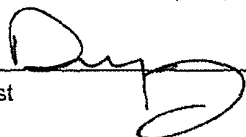
Duplicate Conc. (ug/Kg)	Sample	Duplicate	%Diff	Accept Range	Detect Limit
Benzene	ND	ND	0.0%	0 - 30%	0.9
Toluene	ND	ND	0.0%	0 - 30%	1.0
Ethylbenzene	ND	ND	0.0%	0 - 30%	1.0
p,m-Xylene	ND	ND	0.0%	0 - 30%	1.2
o-Xylene	ND	ND	0.0%	0 - 30%	0.9

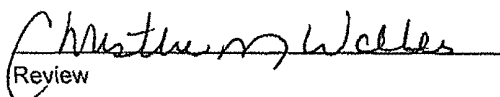
Spike Conc. (ug/Kg)	Sample	Amount Spiked	Spiked Sample	% Recovery	Accept Range
Benzene	ND	50.0	50.4	101%	39 - 150
Toluene	ND	50.0	51.9	104%	46 - 148
Ethylbenzene	ND	50.0	51.7	103%	32 - 160
p,m-Xylene	ND	100	103	103%	46 - 148
o-Xylene	ND	50.0	48.5	97.0%	46 - 148

ND - Parameter not detected at the stated detection limit.

References      Method 5030B, Purge-and-Trap, Test Methods for Evaluating Solid Waste, SW-846, USEPA, December 1996  
                          Method 8021B, Aromatic and Halogenated Volatiles by Gas Chromatography Using Photoionization and/or Electrolytic Conductivity Detectors, SW-846, USEPA December 1996.

Comments:      QA/QC for Samples 52587 - 52592, 52594 and 52595.

Analyst 

Review 



EPA METHOD 418.1  
TOTAL PETROLEUM  
HYDROCARBONS

Client:	WPX	Project #:	04108-0003
Sample ID:	Reserve Pit	Date Reported:	12-04-09
Laboratory Number:	52595	Date Sampled:	11-25-09
Chain of Custody No:	8500	Date Received:	12-01-09
Sample Matrix:	Soil	Date Extracted:	12-02-09
Preservative:	Cool	Date Analyzed:	12-02-09
Condition:	Intact	Analysis Needed:	TPH-418.1

Parameter	Concentration (mg/kg)	Det. Limit (mg/kg)
Total Petroleum Hydrocarbons	29.3	9.77

ND = Parameter not detected at the stated detection limit.

References: Method 418.1, Petroleum Hydrocarbons, Total Recoverable, Chemical Analysis of Water and Waste, USEPA Storet No. 4551, 1978.

Comments: Rosa Unit #75D

Analyst

Review





**envirotech**  
Analytical Laboratory

**EPA METHOD 418.1  
TOTAL PETROLEUM  
HYDROCARBONS  
QUALITY ASSURANCE REPORT**

Client:	QA/QC	Project #:	N/A
Sample ID:	QA/QC	Date Reported:	12-04-09
Laboratory Number:	12-02-TPH.QA/QC 52593	Date Sampled:	N/A
Sample Matrix:	Freon-113	Date Analyzed:	12-02-09
Preservative:	N/A	Date Extracted:	12-02-09
Condition:	N/A	Analysis Needed:	TPH

Calibration	I-Cal Date	C-Cal Date	I-Cal RF:	C-Cal RF:	% Difference	Accept. Range
	11-23-09	12-02-09	1,750	1,690	3.4%	+/- 10%

Blank Conc. (mg/Kg)	Concentration	Detection Limit
TPH	ND	9.8

Duplicate Conc. (mg/Kg)	Sample	Duplicate	% Difference	Accept. Range
TPH	496	544	9.8%	+/- 30%

Spike Conc. (mg/Kg)	Sample	Spike Added	Spike Result	% Recovery	Accept Range
TPH	496	2,000	2,520	101%	80 - 120%

ND = Parameter not detected at the stated detection limit.

References: Method 418.1, Petroleum Hydrocarbons, Total Recoverable, Chemical Analysis of Water and Waste, USEPA Storet No. 4551, 1978.

Comments: QA/QC for Samples 52593 - 52595.

Analyst

Review



## Chloride

Client:	WPX	Project #:	04108-0003
Sample ID:	Reserve Pit	Date Reported:	12-04-09
Lab ID#:	52595	Date Sampled:	11-25-09
Sample Matrix:	Soil	Date Received:	12-01-09
Preservative:	Cool	Date Analyzed:	12-02-09
Condition:	Intact	Chain of Custody:	8500

### Parameter

### Concentration (mg/Kg)

Total Chloride

25

Reference: U.S.E.P.A., 4500B, "Methods for Chemical Analysis of Water and Wastes", 1983.  
Standard Methods For The Examination of Water And Waste Water", 18th ed., 1992.

Comments: Rosa Unit #75D

Analyst

Review

# CHAIN OF CUSTODY RECORD

8500

Client: <b>WPX</b>			Project Name / Location: <b>Rosa unit # 75 D</b>			ANALYSIS / PARAMETERS																																													
Client Address: <b>Myke Lane</b>			Sampler Name: <b>Johnny Stinson</b>			<table border="1"> <tr> <th>TPH (Method 8015)</th> <th>BTEX (Method 8021)</th> <th>VOC (Method 8260)</th> <th>RCRA 8 Metals</th> <th>Cation / Anion</th> <th>RCI</th> <th>TCLP with H/P</th> <th>PAH</th> <th>TPH (418.1)</th> <th>CHLORIDE</th> <th></th> <th></th> <th></th> <th></th> <th>Sample Cool</th> <th>Sample Intact</th> </tr> <tr> <td>✓</td> <td>✓</td> <td></td> <td></td> <td></td> <td></td> <td></td> <td></td> <td>✓</td> <td>✓</td> <td></td> <td></td> <td></td> <td></td> <td>4</td> <td>4</td> </tr> </table>														TPH (Method 8015)	BTEX (Method 8021)	VOC (Method 8260)	RCRA 8 Metals	Cation / Anion	RCI	TCLP with H/P	PAH	TPH (418.1)	CHLORIDE					Sample Cool	Sample Intact	✓	✓							✓	✓					4	4
TPH (Method 8015)	BTEX (Method 8021)	VOC (Method 8260)	RCRA 8 Metals	Cation / Anion	RCI															TCLP with H/P	PAH	TPH (418.1)	CHLORIDE					Sample Cool	Sample Intact																						
✓	✓							✓	✓					4	4																																				
Client Phone No.:			Client No.: <b>04108-0003</b>																																																
Sample No./ Identification	Sample Date	Sample Time	Lab No.	Sample Matrix	No./Volume of Containers	Preservative																																													
						HgCl <sub>2</sub>	HCl																																												
<b>Reserve Pit</b>	<b>11/25/09</b>	<b>11:30 AM</b>	<b>52595</b>	<b>Soil Solid</b>	<b>1</b>																																														
				<b>Sludge Aqueous</b>																																															
				<b>Soil Solid</b>																																															
				<b>Sludge Aqueous</b>																																															
				<b>Soil Solid</b>																																															
				<b>Sludge Aqueous</b>																																															
				<b>Soil Solid</b>																																															
				<b>Sludge Aqueous</b>																																															
				<b>Soil Solid</b>																																															
				<b>Sludge Aqueous</b>																																															
				<b>Soil Solid</b>																																															
				<b>Sludge Aqueous</b>																																															
				<b>Soil Solid</b>																																															
				<b>Sludge Aqueous</b>																																															
				<b>Soil Solid</b>																																															
				<b>Sludge Aqueous</b>																																															
Relinquished by: (Signature) <i>[Signature]</i>					Date <b>12-1-09</b>	Time <b>2:25 PM</b>	Received by: (Signature) <i>[Signature]</i>					Date <b>12/1/09</b>	Time <b>14:25</b>																																						
Relinquished by: (Signature)							Received by: (Signature)																																												
Relinquished by: (Signature)							Received by: (Signature)																																												



**envirotech**  
Analytical Laboratory

5796 US Highway 64 • Farmington, NM 87401 • 505-632-0615 • lab@envirotech-inc.com

## Meador, Tasha

---

**From:** johnny@adobecontractorsinc.com  
**Sent:** Friday, October 09, 2009 4:34 PM  
**To:** Lane, Myke ; Meador, Tasha  
**Subject:** FW: Williams clean-ups

I forgot to copy you on this one again.

Johnny Stinson  
Gen. Manager/ Adobe Contractors  
Office: (505)632-1486  
Mobile: (505)320-6076  
[johnny@adobecontractorsinc.com](mailto:johnny@adobecontractorsinc.com)

---

**From:** johnny@adobecontractorsinc.com [mailto:[johnny@adobecontractorsinc.com](mailto:johnny@adobecontractorsinc.com)]  
**Sent:** Friday, October 09, 2009 3:56 PM  
**To:** Bill Liess ([bill\\_liess@nm.blm.gov](mailto:bill_liess@nm.blm.gov)); Mark Kelly; Randy Mckee ([randy\\_mckee@nm.blm.gov](mailto:randy_mckee@nm.blm.gov)); Robert Switzer ([robert\\_switzer@blm.gov](mailto:robert_switzer@blm.gov)); Sherrie Landon  
**Subject:** Williams clean-ups

We are just about finished with the RU #138D. We are going to roto-till the clean-up area and place some waddles. We will move to the RU #75D next. We also will start the RU #153C next week. Let me know if you have any questions.

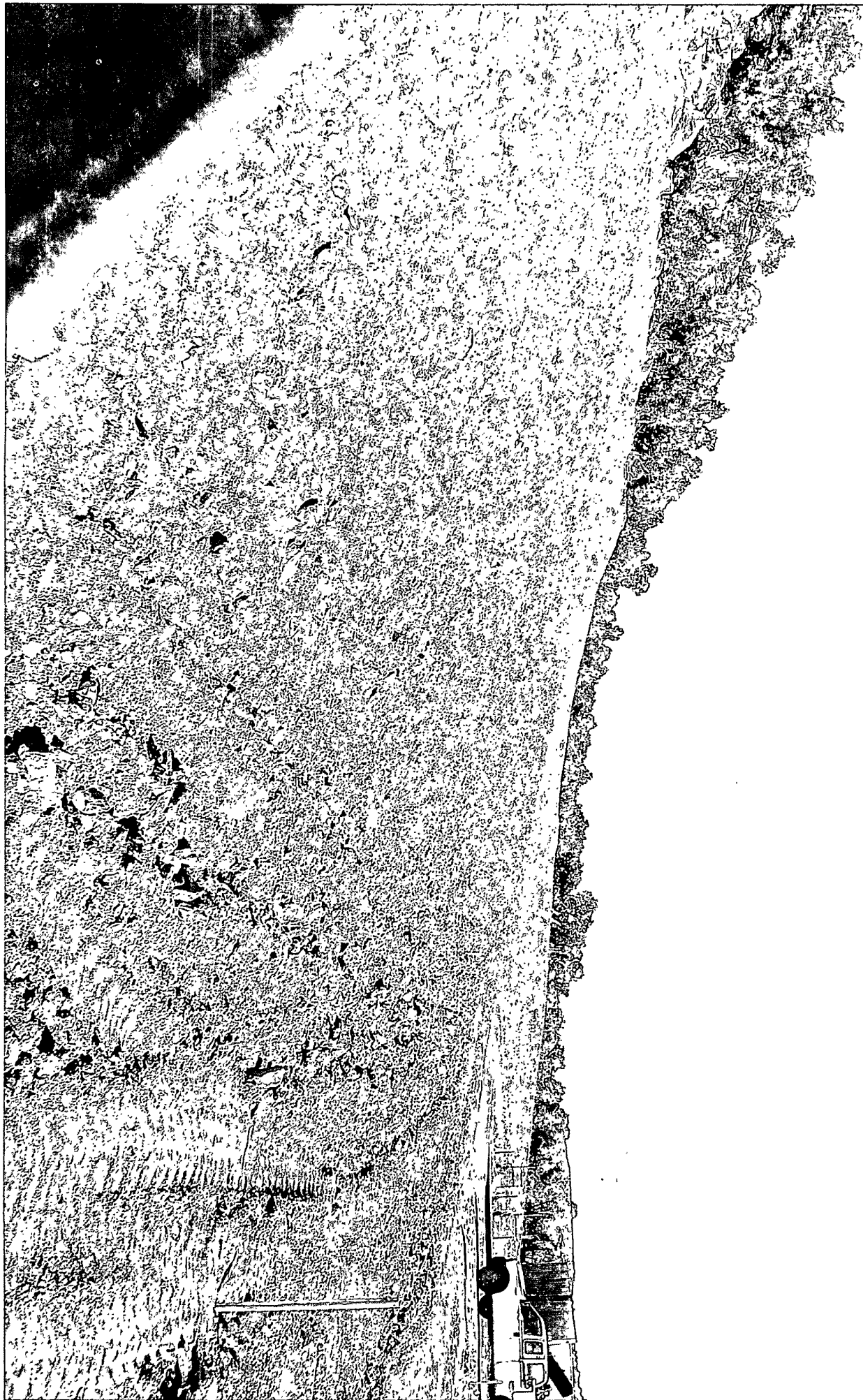
Thanks,

Johnny Stinson  
Gen. Manager/ Adobe Contractors  
Office: (505)632-1486  
Mobile: (505)320-6076  
[johnny@adobecontractorsinc.com](mailto:johnny@adobecontractorsinc.com)

12/3/2009



7512





Exploration & Production  
San Juan Basin Operations  
720 So. Main / PO Box 640  
Aztec, NM 87410  
505-634-4200 / 505-634-4205 fax

## Temporary Pit Inspection

### FACILITY INFORMATION

Facility Name: ROSA UNIT # 75-D

API #: 30-045-34964

Pit Type: ☒ Drilling ☐ Workover ☐ Cavitation Inspection: ☒ Daily ☐ Weekly ☐ Monthly

Pit Liner intact (no visible tears)	<input checked="" type="checkbox"/> Yes <input type="checkbox"/> No If No, Report to EH&S immediately	Date / Time Reported:
Pit Properly Fenced (no fence on rig side if on site)	<input checked="" type="checkbox"/> Yes <input type="checkbox"/> No <input type="checkbox"/> Not Required (if site fully fenced)	
Pit Slopes intact	<input checked="" type="checkbox"/> Yes <input type="checkbox"/> No	
Adequate freeboard (liquid level 2 <u>vertical</u> feet from berm top)	<input checked="" type="checkbox"/> Yes <input type="checkbox"/> No <input type="checkbox"/> Not Applicable	
Free oil or sheen present on pit	<input type="checkbox"/> Yes <input checked="" type="checkbox"/> No	
Flare Pit free of liquids	<input checked="" type="checkbox"/> Yes <input type="checkbox"/> No <input type="checkbox"/> Not Applicable	
Comments:		
Inspector Signature: Willie Mock		
Printed Name: Willie Mock		
Title: Drlg Consultant ( TDCI )		
Date: 06/28/2009 Phone: ( 505 ) 793-0528		

Record Retention: Submit with Closure  
File: EH&S



Exploration & Production  
San Juan Basin Operations  
720 So. Main / PO Box 640  
Aztec, NM 87410  
505-634-4200 / 505-634-4205 fax

## Temporary Pit Inspection

### FACILITY INFORMATION

Facility Name: ROSA UNIT # 75-D	API #: 30-045-34964
---------------------------------	---------------------

Pit Type: <input checked="" type="checkbox"/> Drilling <input type="checkbox"/> Workover <input type="checkbox"/> Cavitation	Inspection: <input checked="" type="checkbox"/> Daily <input type="checkbox"/> Weekly <input type="checkbox"/> Monthly
--	--

Pit Liner intact (no visible tears)	<input checked="" type="checkbox"/> Yes <input type="checkbox"/> No If No, Report to EH&S immediately	Date / Time Reported:
Pit Properly Fenced (no fence on rig side if on site)	<input checked="" type="checkbox"/> Yes <input type="checkbox"/> No <input type="checkbox"/> Not Required (if site fully fenced)	
Pit Slopes intact	<input checked="" type="checkbox"/> Yes <input type="checkbox"/> No	
Adequate freeboard (liquid level 2 vertical feet from berm top)	<input checked="" type="checkbox"/> Yes <input type="checkbox"/> No <input type="checkbox"/> Not Applicable	
Free oil or sheen present on pit	<input type="checkbox"/> Yes <input checked="" type="checkbox"/> No	
Flare Pit free of liquids	<input checked="" type="checkbox"/> Yes <input type="checkbox"/> No <input type="checkbox"/> Not Applicable	
Comments:		
Inspector Signature: Willie Mock		
Printed Name: Willie Mock		
Title: Drlg Consultant ( TDCI )		
Date: 06/29/2009 Phone: ( 505 ) 793-0528		

Record Retention: Submit with Closure  
File: EH&S





Exploration & Production  
San Juan Basin Operations  
720 So. Main / PO Box 640  
Aztec, NM 87410  
505-634-4200 / 505-634-4205 fax

## Temporary Pit Inspection

### FACILITY INFORMATION

Facility Name: ROSA UNIT # 75-D	API #: 30-045-34964
---------------------------------	---------------------

Pit Type: <input checked="" type="checkbox"/> Drilling <input type="checkbox"/> Workover <input type="checkbox"/> Cavitation	Inspection: <input checked="" type="checkbox"/> Daily <input type="checkbox"/> Weekly <input type="checkbox"/> Monthly
--	--

Pit Liner intact (no visible tears)	<input checked="" type="checkbox"/> Yes <input type="checkbox"/> No If No, Report to EH&S immediately	Date / Time Reported:
Pit Properly Fenced (no fence on rig side if on site)	<input checked="" type="checkbox"/> Yes <input type="checkbox"/> No <input type="checkbox"/> Not Required (if site fully fenced)	
Pit Slopes intact	<input checked="" type="checkbox"/> Yes <input type="checkbox"/> No	
Adequate freeboard (liquid level 2 vertical feet from berm top)	<input checked="" type="checkbox"/> Yes <input type="checkbox"/> No <input type="checkbox"/> Not Applicable	
Free oil or sheen present on pit	<input type="checkbox"/> Yes <input checked="" type="checkbox"/> No	
Flare Pit free of liquids	<input checked="" type="checkbox"/> Yes <input type="checkbox"/> No <input type="checkbox"/> Not Applicable	
Comments:		
Inspector Signature: Willie Mock		
Printed Name: Willie Mock		
Title: Drlg Consultant ( TDCI )		
Date: 06/30/2009 Phone: ( 505 ) 793-0528		

Record Retention: Submit with Closure  
File: EH&S



Exploration & Production  
San Juan Basin Operations  
720 So. Main / PO Box 640  
Aztec, NM 87410  
505-634-4200 / 505-634-4205 fax

## Temporary Pit Inspection

### FACILITY INFORMATION

Facility Name: ROSA UNIT # 75-D

API #: 30-045-34964

Pit Type: ☒ Drilling ☐ Workover ☐ Cavitation Inspection: ☒ Daily ☐ Weekly ☐ Monthly

Pit Liner intact (no visible tears)	<input checked="" type="checkbox"/> Yes <input type="checkbox"/> No If No, Report to EH&S immediately	Date / Time Reported:
Pit Properly Fenced (no fence on rig side if on site)	<input checked="" type="checkbox"/> Yes <input type="checkbox"/> No <input type="checkbox"/> Not Required (if site fully fenced)	
Pit Slopes intact	<input checked="" type="checkbox"/> Yes <input type="checkbox"/> No	
Adequate freeboard (liquid level 2 <u>vertical</u> feet from berm top)	<input checked="" type="checkbox"/> Yes <input type="checkbox"/> No <input type="checkbox"/> Not Applicable	
Free oil or sheen present on pit	<input type="checkbox"/> Yes <input checked="" type="checkbox"/> No	
Flare Pit free of liquids	<input checked="" type="checkbox"/> Yes <input type="checkbox"/> No <input type="checkbox"/> Not Applicable	
Comments:		
Inspector Signature: Willie Mock		
Printed Name: Willie Mock		
Title: Drlg Consultant ( TDCI )		
Date: 07/1/2009 Phone: ( 505 ) 793-0528		

Record Retention: Submit with Closure  
File: EH&S



Exploration & Production  
San Juan Basin Operations  
720 So. Main / PO Box 640  
Aztec, NM 87410  
505-634-4200 / 505-634-4205 fax

## Temporary Pit Inspection

### FACILITY INFORMATION

Facility Name: ROSA UNIT # 75-D

API #: 30-045-34964

Pit Type: ☒ Drilling ☐ Workover ☐ Cavitation Inspection: ☒ Daily ☐ Weekly ☐ Monthly

Pit Liner intact (no visible tears)	<input checked="" type="checkbox"/> Yes <input type="checkbox"/> No If No, Report to EH&S immediately	Date / Time Reported:
Pit Properly Fenced (no fence on rig side if on site)	<input checked="" type="checkbox"/> Yes <input type="checkbox"/> No <input type="checkbox"/> Not Required (if site fully fenced)	
Pit Slopes intact	<input checked="" type="checkbox"/> Yes <input type="checkbox"/> No	
Adequate freeboard (liquid level 2 vertical feet from berm top)	<input checked="" type="checkbox"/> Yes <input type="checkbox"/> No <input type="checkbox"/> Not Applicable	
Free oil or sheen present on pit	<input type="checkbox"/> Yes <input checked="" type="checkbox"/> No	
Flare Pit free of liquids	<input checked="" type="checkbox"/> Yes <input type="checkbox"/> No <input type="checkbox"/> Not Applicable	
Comments:		
Inspector Signature: Willie Mock		
Printed Name: Willie Mock		
Title: Drlg Consultant ( TDCI )		
Date: 07/2/2009 Phone: ( 505 ) 793-0528		

Record Retention: Submit with Closure  
File: EH&S



Exploration & Production  
San Juan Basin Operations  
720 So. Main / PO Box 640  
Aztec, NM 87410  
505-634-4200 / 505-634-4205 fax

## Temporary Pit Inspection

### FACILITY INFORMATION

Facility Name: ROSA UNIT # 75-D	API #: 30-045-34964
---------------------------------	---------------------

Pit Type: <input checked="" type="checkbox"/> Drilling <input type="checkbox"/> Workover <input type="checkbox"/> Cavitation	Inspection: <input checked="" type="checkbox"/> Daily <input type="checkbox"/> Weekly <input type="checkbox"/> Monthly
--	--

Pit Liner intact (no visible tears)	<input checked="" type="checkbox"/> Yes <input type="checkbox"/> No If No, Report to EH&S immediately	Date / Time Reported:
Pit Properly Fenced (no fence on rig side if on site)	<input checked="" type="checkbox"/> Yes <input type="checkbox"/> No <input type="checkbox"/> Not Required (if site fully fenced)	
Pit Slopes intact	<input checked="" type="checkbox"/> Yes <input type="checkbox"/> No	
Adequate freeboard (liquid level 2 vertical feet from berm top)	<input checked="" type="checkbox"/> Yes <input type="checkbox"/> No <input type="checkbox"/> Not Applicable	
Free oil or sheen present on pit	<input type="checkbox"/> Yes <input checked="" type="checkbox"/> No	
Flare Pit free of liquids	<input checked="" type="checkbox"/> Yes <input type="checkbox"/> No <input type="checkbox"/> Not Applicable	
Comments:		
Inspector Signature: Willie Mock		
Printed Name: Willie Mock		
Title: Drlg Consultant ( TDCI )		
Date: 07/3/2009 Phone: ( 505 ) 793-0528		

Record Retention: Submit with Closure  
File: EH&S

Exploration & Production  
San Juan Basin Operations  
720 So. Main / PO Box 640  
Aztec, NM 87410  
505-634-4200 / 505-634-4205 fax



## Temporary Pit Inspection

### FACILITY INFORMATION

Facility Name:

API #:

Pit Type: Drilling Workover Completion Inspection: Daily (Rig) Weekly (Tech)

Pit Liner intact (no visible tears)	X Yes No If No, Report to EH&S immediately	Date / 8/12/09 Time Reported: 14:00
Pit Properly Fenced (no fence on rig side if on site)	X Yes No Not Required (if site fully fenced)	
Pit Slopes intact	X Yes No	
Adequate freeboard (liquid level 2 vertical feet from berm top)	X Yes No Not Applicable	
Free oil or sheen present on pit	Yes X No	
Flare Pit free of liquids	X Yes No Not Applicable	
Comments:		
Inspector Signature:		
Printed Name: Craig Ward		
Title: rig supervisor		
Date: 8/12/09 Phone: 505-793-3099		

Record Retention: Submit with Closure  
File: EH&S Well Files

Exploration & Production  
San Juan Basin Operations  
720 So. Main / PO Box 640  
Aztec, NM 87410  
505-634-4200 / 505-634-4205 fax



## Temporary Pit Inspection

### FACILITY INFORMATION

<b>Facility Name:</b> RU#75D	<b>API #:</b>
------------------------------	---------------

<b>Pit Type:</b> Drilling    Workover    x Completion	<b>Inspection:</b> Daily x (Rig)    Weekly (Tech)
---	---

Pit Liner intact (no visible tears)	X Yes    No    If No, Report to EH&S immediately	Date / 8/17/09 Time Reported: 08:00
Pit Properly Fenced (no fence on rig side if on site)	X Yes    No    Not Required (if site fully fenced)	
Pit Slopes intact	X Yes    No	
Adequate freeboard (liquid level 2 <u>vertical</u> feet from berm top)	X Yes    No    Not Applicable	
Free oil or sheen present on pit	Yes    X No	
Flare Pit free of liquids	X Yes    No    Not Applicable	
Comments:		
Inspector Signature:		
Printed Name: Craig Ward		
Title: rig supervisor		
Date: 8/17/09                      Phone: 505-793-3099		

Record Retention: Submit with Closure  
File: EH&S Well Files

The logo for William's, featuring the brand name in a stylized, italicized font with a swoosh underline.

## FACILITY INFORMATION

<b>Pit Type:</b>	Drilling	Workover	X Completion	<b>Inspection:</b>	Daily X (Rig)	Weekly (Tech)
------------------	----------	----------	--------------	--------------------	---------------	---------------

**Record Retention: Submit with Closure  
File: EH&S Well Files**

The logo for William's, featuring the brand name in a stylized, italicized font with a swoosh underline.

## FACILITY INFORMATION

Facility Name: RU#75D	API #:
-----------------------	--------

<b>Pit Type:</b>	Drilling	Workover	X Completion	<b>Inspection:</b>	Daily X (Rig)	Weekly (Tech)
------------------	----------	----------	--------------	--------------------	---------------	---------------

Pit Liner intact (no visible tears)	X Yes    No    If No, Report to EH&S immediately	Date / 8/19/09 Time Reported: 10:00
Pit Properly Fenced (no fence on rig side if on site)	X Yes    No    Not Required (if site fully fenced)	
Pit Slopes intact	X Yes    No	
Adequate freeboard (liquid level 2 <u>vertical</u> feet from berm top)	X Yes    No    Not Applicable	
Free oil or sheen present on pit	Yes    X No	
Flare Pit free of liquids	X Yes    No    Not Applicable	
Comments:		
Inspector Signature:		
Printed Name: Craig Ward		
Title: rig supervisor		
Date: 8/19/09	Phone: 505-793-3099	

Record Retention: Submit with Closure  
File: EH&S Well Files



The Williams logo, featuring the word "Williams" in a stylized, italicized font with a swoosh underline.



The logo for William's, featuring the brand name in a stylized, italicized font with a swoosh underline.

Exploration & Production  
San Juan Basin Operations  
720 So. Main / PO Box 640  
Aztec, NM 87410  
505-634-4200 / 505-634-4205 fax



## Temporary Pit Inspection

### FACILITY INFORMATION

Facility Name: RU#75D

API #:

Pit Type: Drilling Workover X Completion Inspection: Daily X (Rig) Weekly (Tech)

Pit Liner intact (no visible tears)	X Yes No If No, Report to EH&S immediately	Date / 8/27/09 Time Reported: 12:30
Pit Properly Fenced (no fence on rig side if on site)	X Yes No Not Required (if site fully fenced)	
Pit Slopes intact	X Yes No	
Adequate freeboard (liquid level 2 <u>vertical</u> feet from berm top)	X Yes No Not Applicable	
Free oil or sheen present on pit	Yes X No	
Flare Pit free of liquids	X Yes No Not Applicable	
Comments:		
Inspector Signature:		
Printed Name: Craig Ward		
Title: rig supervisor		
Date: 8/27/09 Phone: 505-793-3099		

Record Retention: Submit with Closure  
File: EH&S Well Files



Exploration & Production  
San Juan Basin Operations  
720 So. Main / PO Box 640  
Aztec, NM 87410  
505-634-4200 / 505-634-4205 fax



## Temporary Pit Inspection

### FACILITY INFORMATION

Facility Name: RU#75D

API #:

Pit Type: Drilling Workover X Completion Inspection: Daily X (Rig) Weekly (Tech)

Pit Liner intact (no visible tears)	X Yes No If No, Report to EH&S immediately	Date / 8/31/09 Time Reported: 08:30
Pit Properly Fenced (no fence on rig side if on site)	X Yes No	Not Required (if site fully fenced)
Pit Slopes intact	X Yes No	
Adequate freeboard (liquid level 2 vertical feet from berm top)	X Yes No	Not Applicable
Free oil or sheen present on pit	Yes X No	
Flare Pit free of liquids	X Yes No	Not Applicable
Comments:		
Inspector Signature:		
Printed Name: Craig Ward		
Title: rig supervisor		
Date: 8/31/09 Phone: 505-793-3099		

Record Retention: Submit with Closure  
File: EH&S Well Files

The Williams logo, featuring the word "Williams" in a stylized, italicized font with a swoosh underline.

## FACILITY INFORMATION

<b>Pit Type:</b>	Drilling	Workover	X Completion	<b>Inspection:</b>	Daily X (Rig)	Weekly (Tech)
------------------	----------	----------	--------------	--------------------	---------------	---------------

**Record Retention: Submit with Closure  
File: EH&S Well Files**



## FACILITY INFORMATION

<b>Pit Type:</b>	Drilling	Workover	X Completion	<b>Inspection:</b>	Daily X (Rig)	Weekly (Tech)
------------------	----------	----------	--------------	--------------------	---------------	---------------

**Record Retention: Submit with Closure  
File: EH&S Well Files**





Exploration & Production  
San Juan Basin Operations  
720 So. Main / PO Box 640  
Aztec, NM 87410  
505-634-4200 / 505-634-4205 fax



## Temporary Pit Inspection

### FACILITY INFORMATION

<b>Facility Name:</b> RU#75D	<b>API #:</b>
------------------------------	---------------

<b>Pit Type:</b> Drilling      Workover      X Completion	<b>Inspection:</b> Daily X (Rig)      Weekly (Tech)
---	---

Pit Liner intact (no visible tears)	X Yes    No    If No, Report to EH&S immediately	Date / 9/04/09 Time Reported: 08:30
Pit Properly Fenced (no fence on rig side if on site)	X Yes    No    Not Required (if site fully fenced)	
Pit Slopes intact	X Yes    No	
Adequate freeboard (liquid level 2 <u>vertical</u> feet from berm top)	X Yes    No    Not Applicable	
Free oil or sheen present on pit	Yes    X No	
Flare Pit free of liquids	X Yes    No    Not Applicable	
Comments:		
Inspector Signature:		
Printed Name: Craig Ward		
Title: rig supervisor		
Date: 9/04/09      Phone: 505-793-3099		

Record Retention: Submit with Closure  
File: EH&S Well Files



## FACILITY INFORMATION

<b>Pit Type:</b>	Drilling	Workover	X Completion	<b>Inspection:</b>	Daily X (Rig)	Weekly (Tech)
------------------	----------	----------	--------------	--------------------	---------------	---------------

**Record Retention: Submit with Closure  
File: EH&S Well Files**









**William's**

The Williams logo, featuring the word "Williams" in a bold, italicized serif font, with a stylized swoosh or underline element.



Exploration & Production  
San Juan Basin Operations  
720 So. Main / PO Box 640  
Aztec, NM 87410  
505-634-4200 / 505-634-4205 fax



## Temporary Pit Inspection

### FACILITY INFORMATION

<b>Facility Name:</b> RU#75D	<b>API #:</b>
------------------------------	---------------

<b>Pit Type:</b>	Drilling	Workover	X Completion	<b>Inspection:</b>	Daily X (Rig)	Weekly (Tech)
------------------	----------	----------	--------------	--------------------	---------------	---------------

Pit Liner intact (no visible tears)	X Yes   No   If No, Report to EH&S immediately	Date / 9/14/09 Time Reported: 07:30
Pit Properly Fenced (no fence on rig side if on site)	X Yes   No   Not Required (if site fully fenced)	
Pit Slopes intact	X Yes   No	
Adequate freeboard (liquid level 2 <u>vertical</u> feet from berm top)	X Yes   No   Not Applicable	
Free oil or sheen present on pit	Yes   X No	
Flare Pit free of liquids	X Yes   No   Not Applicable	
Comments:		
Inspector Signature:		
Printed Name: Craig Ward		
Title: rig supervisor		
Date: 9/14/09                      Phone: 505-793-3099		

Record Retention: Submit with Closure  
File: EH&S Well Files

The Williams logo, featuring the word "Williams" in a stylized, italicized font with a swoosh underline.

Exploration & Production  
San Juan Basin Operations  
720 So. Main / PO Box 640  
Aztec, NM 87410  
505-634-4200 / 505-634-4205 fax



## Temporary Pit Inspection

### FACILITY INFORMATION

<b>Facility Name:</b> RU#75D	<b>API #:</b>
------------------------------	---------------

<b>Pit Type:</b> Drilling      Workover      X Completion	<b>Inspection:</b> Daily X (Rig)      Weekly (Tech)
---	---

Pit Liner intact (no visible tears)	X Yes    No    If No, Report to EH&S immediately	Date / 9/21/09 Time Reported: 08:30
Pit Properly Fenced (no fence on rig side if on site)	X Yes    No    Not Required (if site fully fenced)	
Pit Slopes intact	X Yes    No	
Adequate freeboard (liquid level 2 <u>vertical</u> feet from berm top)	X Yes    No    Not Applicable	
Free oil or sheen present on pit	Yes    X No	
Flare Pit free of liquids	X Yes    No    Not Applicable	
Comments:		
Inspector Signature:		
Printed Name: Craig Ward		
Title: rig supervisor		
Date: 9/21/09      Phone: 505-793-3099		

Record Retention: Submit with Closure  
File: EH&S Well Files

Exploration & Production  
San Juan Basin Operations  
720 So. Main / PO Box 640  
Aztec, NM 87410  
505-634-4200 / 505-634-4205 fax



## Temporary Pit Inspection

### FACILITY INFORMATION

<b>Facility Name:</b> RU#75D	<b>API #:</b>
------------------------------	---------------

<b>Pit Type:</b> Drilling    Workover    X Completion	<b>Inspection:</b> Daily X (Rig)    Weekly (Tech)
---	---

Pit Liner intact (no visible tears)	X Yes    No    If No, Report to EH&S immediately	Date / 9/22/09 Time Reported: 08:00
Pit Properly Fenced (no fence on rig side if on site)	X Yes    No    Not Required (if site fully fenced)	
Pit Slopes intact	X Yes    No	
Adequate freeboard (liquid level 2 <u>vertical</u> feet from berm top)	X Yes    No    Not Applicable	
Free oil or sheen present on pit	Yes    X No	
Flare Pit free of liquids	X Yes    No    Not Applicable	
Comments:		
Inspector Signature:		
Printed Name: Craig Ward		
Title: rig supervisor		
Date: 9/22/09                      Phone: 505-793-3099		

Record Retention: Submit with Closure  
File: EH&S Well Files

The Williams logo, featuring the word "Williams" in a stylized, italicized font with a swoosh underline.



Exploration & Production  
San Juan Basin Operations  
720 So. Main / PO Box 640  
Aztec, NM 87410  
505-634-4200 / 505-634-4205 fax

## Temporary Pit Inspection

### FACILITY INFORMATION

Facility Name: ROSA UNIT # 75-D	API #: 30-045-34964
---------------------------------	---------------------

Pit Type: <input checked="" type="checkbox"/> Drilling <input type="checkbox"/> Workover <input type="checkbox"/> Cavitation	Inspection: <input checked="" type="checkbox"/> Daily <input type="checkbox"/> Weekly <input type="checkbox"/> Monthly
--	--

Pit Liner intact (no visible tears)	<input checked="" type="checkbox"/> Yes <input type="checkbox"/> No If No, Report to EH&S immediately	Date / Time Reported:
Pit Properly Fenced (no fence on rig side if on site)	<input checked="" type="checkbox"/> Yes <input type="checkbox"/> No <input type="checkbox"/> Not Required (if site fully fenced)	
Pit Slopes intact	<input checked="" type="checkbox"/> Yes <input type="checkbox"/> No	
Adequate freeboard (liquid level 2 vertical feet from berm top)	<input checked="" type="checkbox"/> Yes <input type="checkbox"/> No <input type="checkbox"/> Not Applicable	
Free oil or sheen present on pit	<input type="checkbox"/> Yes <input checked="" type="checkbox"/> No	
Flare Pit free of liquids	<input checked="" type="checkbox"/> Yes <input type="checkbox"/> No <input type="checkbox"/> Not Applicable	
Comments:		
Inspector Signature: Willie Mock		
Printed Name: Willie Mock		
Title: Drlg Consultant ( TDCI )		
Date: 06/27/2009 Phone: ( 505 ) 793-0528		

Record Retention: Submit with Closure  
File: EH&S