

RECEIVED

**UNITED STATES
DEPARTMENT OF THE INTERIOR
BUREAU OF LAND MANAGEMENT**

APR 05 2010

Sundry Notices and Reports on Wells

Bureau of Land Management
Farmington Field Office

1. Type of Well
GAS

5. Lease Number
SF - 078103 - A
6. If Indian, All. or
Tribe Name

2. Name of Operator

BURLINGTON

RESOURCES OIL & GAS COMPANY LP

7. Unit Agreement Name
Huerfano Unit

3. Address & Phone No. of Operator

PO Box 4289, Farmington, NM 87499 (505) 326-9700

8. Well Name & Number
Huerfano Unit 556

4. Location of Well, Footage, Sec., T, R, M

Surf: Unit L (NWSW), 2000' FSL & 1115' FWL, Section 34, T26N, R9W, NMPM

9. API Well No.

30-045-34620

10. Field and Pool

Basin FC

11. County and State
San Juan Co., NM

12. CHECK APPROPRIATE BOX TO INDICATE NATURE OF NOTICE, REPORT, OTHER DATA

Type of Submission

☒ Notice of Intent☐ Subsequent Report☐ Final Abandonment

Type of Action

☐ Abandonment☐ Recompletion☐ Plugging☐ Casing Repair☐ Altering Casing☐ Change of Plans☐ New Construction☐ Non-Routine Fracturing☐ Water Shut off☐ Conversion to Injection☒ Other - P&A

RCVD APR 13 '10

OIL CONS. DIV.

DIST. 3

13. Describe Proposed or Completed Operations

Burlington Resources wishes to P&A this well per the attached procedures and well bore schematics.

14. I hereby certify that the foregoing is true and correct.Signed Jamie Goodwin Jamie Goodwin Title Regulatory Technician Date 4/5/10

(This space for Federal or State Office use)

APPROVED BY Original Signed: Stephen Mason

Title _____

Date APR 12 2010

CONDITION OF APPROVAL, if any:

Title 18 U.S.C. Section 1001, makes it a crime for any person knowingly and willfully to make any department or agency of the United States any false, fictitious or fraudulent statements or representations as to any matter within its jurisdiction

Notify NMOCD 24 hrs
prior to beginning
operations

NMOCDh 4/21PL

ABANDONMENT PROCEDURE

February 25, 2010

Huerfano Unit 556

Basin Fruitland Coal
2000' FSL & 1115' FWL, Spot L, Section 34 -T 026N - R 009W
San Juan County, New Mexico / API 3004534620
Lat 36° 26' 34.577" N / Long 107° 46' 51.406" W

Note: All cement volumes use 100% excess outside pipe and 50' excess inside. The stabilizing wellbore fluid will be 8.3 ppg, sufficient to balance all exposed formation pressures. All cement will be Class B, mixed at 15.6 ppg with a 1.18 cf/sx yield.

1. This project requires a NMOCD C-144 CLEZ Closed-Loop System Permit for the use of an A-Plus steel tank to handle waste fluids circulated from the well and cement wash up.
2. Install and test location rig anchors. Comply with all NMOCD, BLM, and Operator safety regulations. MOL and RU daylight pulling unit. Conduct safety meeting for all personnel on location. Record casing, tubing and bradenhead pressures. NU relief line and blow down well. Kill well with water as necessary and at least pump tubing capacity of water down the tubing. ND wellhead and NU BOP. Function test BOP.
3. Rods: Yes X, No , Unknown .
Tubing: Yes X, No , Unknown Size 2.375", Length 2063'.
Packer: Yes , No X, Unknown Type .
If this well has rods or a packer, then modify the work sequence in step #2 as appropriate.
4. ^{1812 1815} **Plug #1 (Top of per 6316'-6402', pc, Fruitland coal, Kirkland, Ojo Alamo tops, 1762'-1172'):** ¹⁰⁹¹
RIH and set 4.5" cement retainer or CIBP at 1762'. Load casing and circulate well clean. Pressure test tubing to 1000 PSI. Pressure test casing to 800#. *If casing does not test, then spot or tag subsequent plugs as appropriate.* Mix 40 sxs Class B cement and spot above CR to isolate the PC top, Fruitland Coal perforations, Fruitland top, Kirtland and Ojo Alamo tops. PUH.
5. ^{Surface} **Plug #2 (Kirtland and Ojo Alamo tops, 190' - 0'):** Attempt to pressure test the bradenhead annulus to 300 PSI; note the volume to load. If the BH annulus holds pressure, then establish circulation out casing valve with water. Mix approximately 15 sxs Class B cement and spot a balanced plug from 19' to surface, circulate good cement out casing valve. TOH and LD tubing. Shut well in and WOC. If the BH annulus does not test, then perforate at the appropriate depth and attempt to circulate cement to surface filling the casing from 190' and the annulus from the squeeze holes to surface. Shut in well and WOC.
6. ND BOP and cut off wellhead below surface casing flange. Install P&A marker with cement to comply with regulations. RD, MOL and cut off anchors. Restore location per BLM stipulations.

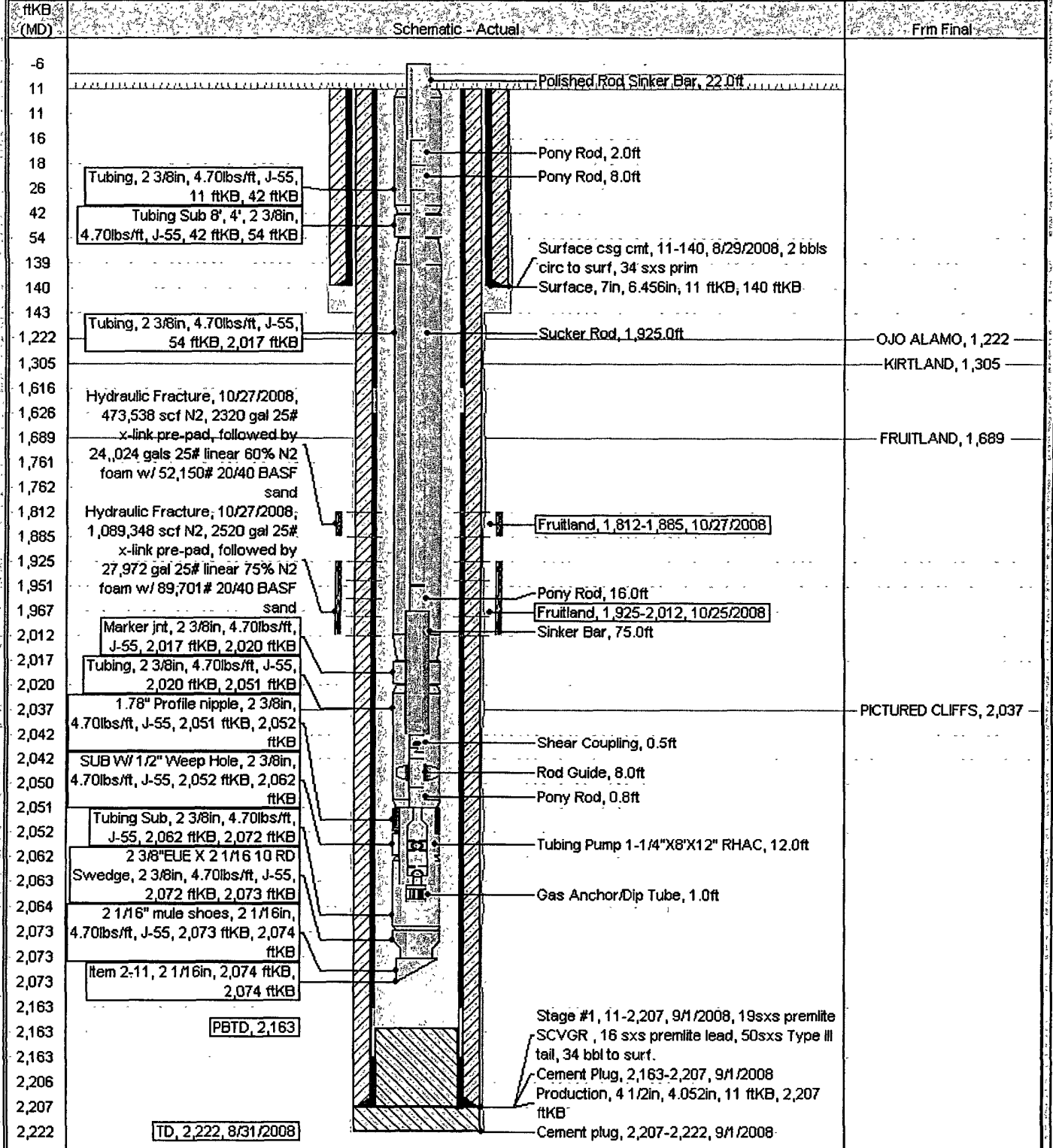
Current Schematic

ConocoPhillips

Well Name: HUERFANO UNIT #556

API/UNIV	State Legal Location	Field Name	License No.	State/Province	Well Configuration Type	Edit
3004534620	034-026N-009VV-L	BASIN FRUITLAND COAL		NEW MEXICO	VERTICAL	
Ground Elevation (ft)	Original KB/RT Elevation (ft)	KB-Crowd Distance (ft)	KB-Casing Flange Distance (ft)	KB-Tubing Hanger Distance (ft)		
6,523.00	6,534.00	11.00				

Well Config: VERTICAL - Original Hole, 4/1/2010 9:59:57 AM



**UNITED STATES DEPARTMENT OF THE INTERIOR
BUREAU OF LAND MANAGEMENT
FARMINGTON DISTRICT OFFICE
1235 LA PLATA HIGHWAY
FARMINGTON, NEW MEXICO 87401**

Attachment to notice of
Intention to Abandon:

Re: Permanent Abandonment
Well: 556 Huerfano Unit

CONDITIONS OF APPROVAL

1. Plugging operations authorized are subject to the attached "General Requirements for Permanent Abandonment of Wells on Federal and Indian Lease."
2. Farmington Office is to be notified at least 24 hours before the plugging operations commence (505) 599-8907.
3. The following modifications to your plugging program are to be made:
 - a) Bring the top of the Fruitland/Kirtland/Ojo Alamo plug to 1091'.

You are also required to place cement excesses per 4.2 and 4.4 of the attached General Requirements.

Office Hours: 7:45 a.m. to 4:30 p.m.
