

UNITED STATES
DEPARTMENT OF THE INTERIOR
BUREAU OF LAND MANAGEMENTFORM APPROVED
OMB NO. 1004-0135
Expires: July 31, 2010**SUNDRY NOTICES AND REPORTS ON WELLS**
Do not use this form for proposals to drill or to re-enter an abandoned well. Use form 3160-3 (APD) for such proposals.5. Lease Serial No.
NMSF080917

6. If Indian, Allottee or Tribe Name

7. If Unit or CA/Agreement, Name and/or No.

SUBMIT IN TRIPLICATE - Other instructions on reverse side.8. Well Name and No.
ATLANTIC B LS 149. API Well No.
30-045-21305-00-S110. Field and Pool, or Exploratory
BLANCO PICTURED CLIFFS11. County or Parish, and State
SAN JUAN COUNTY, NM

1. Type of Well

☐ Oil Well ☒ Gas Well ☐ Other

2. Name of Operator

BP AMERICA PRODUCTION CO.

Contact: CHERRY HLAVA

E-Mail: hlavacl@bp.com

3a. Address

200 ENERGY COURT
FARMINGTON, NM 87401

3b. Phone No. (include area code)

Ph: 281-366-4081

4. Location of Well (Footage, Sec., T., R., M., or Survey Description)

Sec 5 T30N R10W NWSW 1470FSL 1180FWL
36.83725 N Lat, 107.91075 W Lon

12. CHECK APPROPRIATE BOX(ES) TO INDICATE NATURE OF NOTICE, REPORT, OR OTHER DATA

TYPE OF SUBMISSION

TYPE OF ACTION

☒ Notice of Intent☐ Subsequent Report☐ Final Abandonment Notice☐ Acidize☐ Alter Casing☐ Casing Repair☐ Change Plans☐ Convert to Injection☐ Deepen☐ Fracture Treat☐ New Construction☒ Plug and Abandon☐ Plug Back☐ Production (Start/Resume)☐ Reclamation☐ Recomplete☐ Temporarily Abandon☐ Water Disposal☐ Water Shut-Off☐ Well Integrity☐ Other

13. Describe Proposed or Completed Operation (clearly state all pertinent details, including estimated starting date of any proposed work and approximate duration thereof. If the proposal is to deepen directionally or recompleat horizontally, give subsurface locations and measured and true vertical depths of all pertinent markers and zones. Attach the Bond under which the work will be performed or provide the Bond No. on file with BLM/BIA. Required subsequent reports shall be filed within 30 days following completion of the involved operations. If the operation results in a multiple completion or recompleat in a new interval, a Form 3160-4 shall be filed once testing has been completed. Final Abandonment Notices shall be filed only after all requirements, including reclamation, have been completed, and the operator has determined that the site is ready for final inspection.)

BP finds no further uphole potential for said well and respectfully request permission to plug the entire wellbore.

Please see the attached P&A procedure.

**H₂S POTENTIAL EXIST**

RCVD APR 20 '10

OIL CONS. DIV.

DIST. 3

14. I hereby certify that the foregoing is true and correct.

**Electronic Submission #84839 verified by the BLM Well Information System
For BP AMERICA PRODUCTION CO., sent to the Farmington
Committed to AFMSS for processing by STEVE MASON on 04/15/2010 (10SXM0160SE)**

Name (Printed/Typed) CHERRY HLAVA

Title REGULATORY ANALYST

Signature (Electronic Submission)

Date 04/14/2010

THIS SPACE FOR FEDERAL OR STATE OFFICE USE

Approved By STEPHEN MASON

Title PETROLEUM ENGINEER

Date 04/15/2010

Conditions of approval, if any, are attached. Approval of this notice does not warrant or certify that the applicant holds legal or equitable title to those rights in the subject lease which would entitle the applicant to conduct operations thereon.

Office Farmington

Title 18 U.S.C. Section 1001 and Title 43 U.S.C. Section 1212, make it a crime for any person knowingly and willfully to make to any department or agency of the United States any false, fictitious or fraudulent statements or representations as to any matter within its jurisdiction.

**** BLM REVISED ** BLM REVISED ** BLM REVISED ** BLM REVISED ** BLM REVISED ******NMOCD** 4/23

Atlantic B LS 14 – PC PxA Procedure (Version 1)

General Information:

Formation:	PC	Job Objective:	Plug and Abandon
Project #:		Date:	
Engineer:	Trevor McClymont	p. 281-366-1425	c. 701-770-6879
Production Contact:	Rocky Deromedi	p. 505.326.9471	c. 505.486.0942
Optimizer:	Mike McMahan	p. 505.326.9231	
Backup Engineer:			

Well Information:

API Number:	30-045-21305
BP WI:	100%
Run #:	42
Surface Location:	Sec. 5, T30N, R10W
Meter Number:	87988
Well FLAC:	
Cost Center:	
Lease FLAC:	
Restrictions:	N/A
Regulatory Agency:	BLM/NMOCD
Compressed (Y/N):	Y

Production Data:

Tubing Pressure:	76 psi
Casing Pressure:	0 psi
Line Pressure:	95 psi
Pre-rig Gas Rate:	8 MCFD
Anticipated Uplift:	None
Water Rate:	0
CO2 (%):	0.4 to 0.5%
H2S (PPM):	N/A
Gas BTU:	1169
Artificial Lift Type:	Slimhole Completion

Basic Job Procedure:

1. Set CIBP @ 2818'
2. Pressure test 2-7/8" casing
3. Run CBL
4. Cement 2818' to 950' (CBL dependent)
5. Based on CBL cement over Kirtland and Ojo Formations (975' – 726') inside and outside
6. Perf @ 188' and cement surface plug from 188' to surface inside and outside.

Safety and Operational Details:

ALL work shall comply with DWOP E&P Defined Operating Practice.

Well History:

The Atlantic B LS 14 was completed in 1974 as a 2-7/8" slimhole. The original name was Atlantic B 14. There has been no intervention on this well since its initial completion.

Standard Location Work:

1. Perform pre-rig site inspection, size of location, gas taps, other wells, other operators, running equipment, wetlands, wash, H2S barriers if needed for equipment. Landowner issues, buried lines in pits, raptor nesting, critical location, check anchors. Check ID wellhead, determine if equipment is acceptable or obsolete and replace if necessary, if digging is required have One Call made 48 hours. Follow ground disturbance policy.

2. Perform second site visit, checking anchors and barriers if needed. Ensure lines are marked so that they clearly designate pit locations. Discuss and turnover handover sheet with someone from operations team and wells team. LOTO all necessary equipment including but not limited to: meter run, automation, separator, and water line.

Coil Procedure:

3. Notify BLM and NMOCD 24 hours prior to performing the work.
4. Hold pre-job safety meeting and discuss JSA with everyone on location. JSA should cover: heavy lifts, pinch points, location hazards, pressure hazards, proper PPE and 8 golden rules of safety/IFF. Make sure everyone has preformed their LOTO and knows they have the obligation to stop the job if any unsafe activities are observed.
5. Check and record casing pressure, intermediate, and Bradenhead pressures. Record all pressures into DIMS. Notify engineer if Bradenhead pressures exist. Check gas H2S content and treat if the concentration is > or equal to 10 ppm.
6. Move in Wireline unit, equipment and crew. Be sure to fill out necessary work orders. Wireline must perform LOTO and JSA. RU unit with a lubricator and BOP. **Since well is not an HCO no Pressure testing of lubricator is required.**
7. Blow down backside to flow back tank. Kill well if needed
8. RU e-line unit with a lubricator.
9. RIH with 2-7/8" gauge ring to top of perforations @ **2868'**.
10. RIH with 2-7/8" CIBP and set at **2818'** and load hole with fluid and pressure test **2-7/8"** casing to 500# hold for 30 minutes. If no fluid or pressure loss is apparent, continue to next step. If fluid loss is evident, contact the engineer for remedial procedure.
11. Run CBL to determine top of cement
12. RD e-line unit
13. Hold pre-job safety meeting and discuss all JSA's with all BP and third party personnel. The Pre-job safety meeting should cover: heavy lifts, pinch points, location hazards, pressure hazards, and proper PPE.
14. MIRU Coil-tubing unit
15. RU CTU. If threaded tree flanges perform proper risk assessment for threaded connections. Use dual choke manifold or production choke for flow back. Fully function and pressure test BOP's to 250-psi low-pressure test, 1000-psi high-pressure test. If Shear Rams are not used in BOP stack, refer to local standard operating practice. Lubricator should be of adequate length to cover BHA. Dual flapper check valves should be run above BHA. If dual flapper check valves are not used a detailed and current assessment of risks, mitigations and contingency responses should be refer to, or a local standard operating practice.

16. RIH with coil-tubing to **2818'** and spot **1868'** (61.2 cu ft) of G-Class cement inside 2-7/8" casing from **2818' – 950'**. This will cover the Picture Cliff, Fruitland Coal, Kirtland, and Ojo Alamo-intervals.
17. Rig down coil unit.
18. Move in Wireline unit, equipment and crew. Be sure to fill out necessary work orders. Wireline must perform LOTO and JSA. RU unit with a lubricator with pump in sub that can accommodate CBL and BOP. **Since well is not an HCO no Pressure testing of lubricator is required.**
19. RIH with perforating gun and shoot holes @ **188'**. RD wireline.
20. RU pump truck. Establish circulation. Once circulation is established, pump and circulate **65.0** cu ft cement from **188' to surface behind and inside 2-7/8" casing**. This will put cement around the bottom of the 8-5/8" surface casing shoe to surface and both inside and behind the 2-7/8" casing. POOH.
21. Perform underground disturbance and hot work permits. Cut off tree.
22. If cement cannot be seen on all annulus and casing strings remedial cementing will be required from surface.
23. Release coil tubing unit.
24. Install well marker and identification plate per regulatory requirements. Dry hole marker should contain the following:

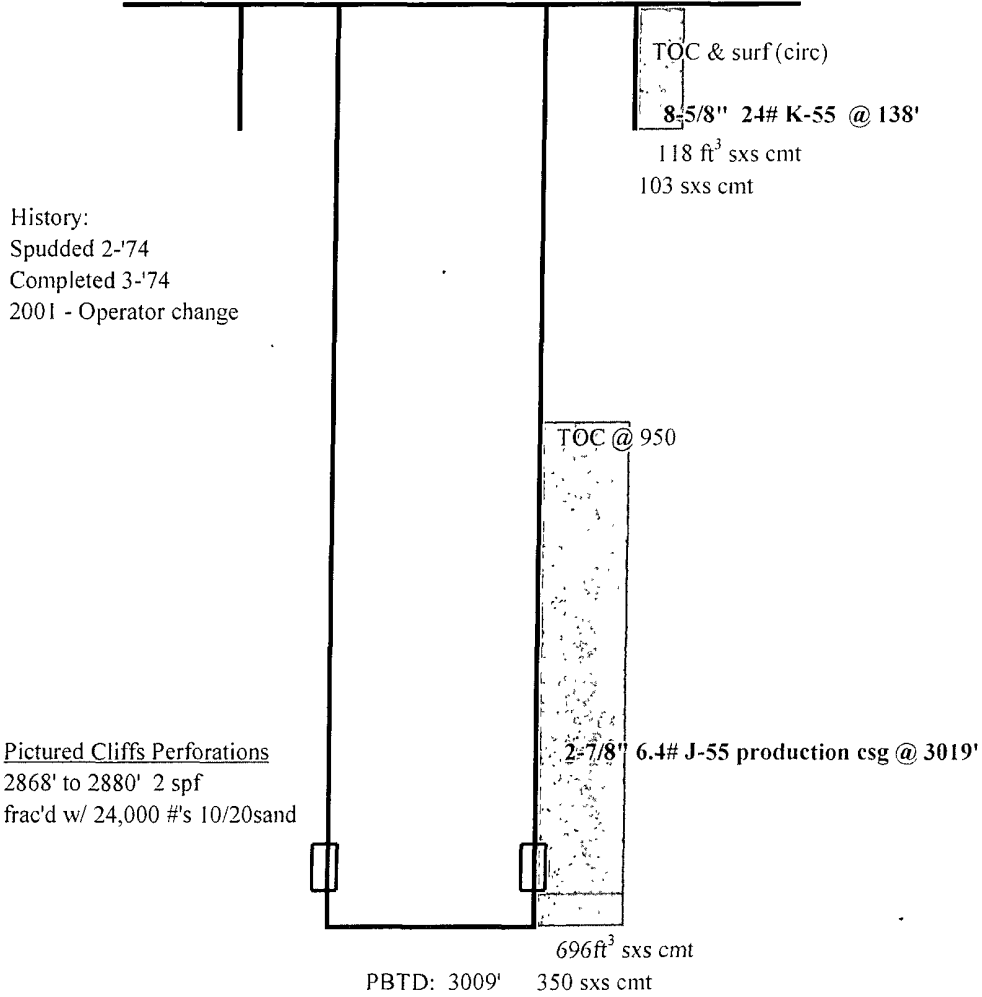
BP American Production Co.
Atlantic B LS 14
API 30-045-21305
Unit letter L, Sec 5, T30N, R10W
1470 FSL, 1180 FWL
San Juan, NM
Picture Cliffs Formation
Federal Lease number: SF 080917
P&A date - TBD
25. RD and release all equipment. Remove all LOTO equipment.
26. Ensure all reports are loaded into DIMS. Print out summary of work and place in Well file. Notify Sherri Bradshaw (326-9260) of completed P&A and Cherry Hlava.

Atlantic BLS 14- PC

Sec 5, T30N, R10W

API: 30-045-21305

6219' GL



NOTES: Formation Tops

Ojo Alamo	1415'
Kirtland	1546'
Fruitland Coal	2274'
Fruitland sand	2565'
Ignaceo Coal	2608'
Cottonwood Coal	2170'
Cahn Coal	2820'
Picture Cliffs	2864
Picture Cliffs_B	2927

updated: 4/2/2010

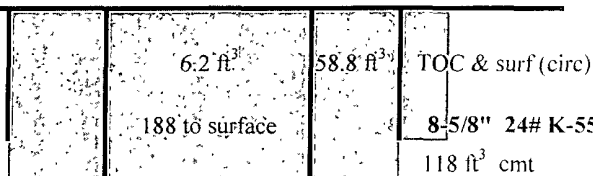
Atlantic BLS 14- PC

Sec 5, T30N, R10W

API: 30-045-21305

6219' GL

Nacim. 440



8-5/8" 24# K-55 @ 138'

118 ft³ cmt

103 sxs cmt

$$188 / 30.771 (1.15) = 5.5 \text{ sxs}$$

$$50 / 4.9159 (1.15) = 9.3 \text{ sxs}$$

$$138 / 4.2 (1.15) = 38 \text{ sxs}$$

52 sxs

History:

Spudded 2-'74

Completed 3-'74

2001 - Operator change

Kirtland 1760'

Kirtland 1760'

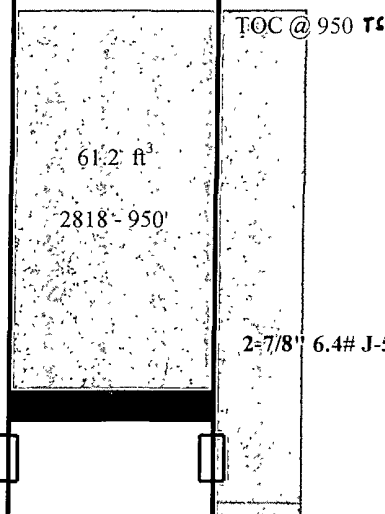
Fruitland 2642'

Pictured Cliffs Perforations

2868' to 2880' 2 spf

frac'd w/ 24,000 #'s 10/20sand

Pictured Cliffs 2980'



$$2818 - 950 / 30.771 (1.15) = 53 \text{ sxs}$$

2-7/8" 6.4# J-55 production csg @ 3019'

696 ft³ cmt

PBTD: 3009' 348 sxs cmt

NOTES: Formation Tops

Ojo Alamo	1415'
Kirtland	1546'
Fruitland Coal	2274'
Fruitland sand	2565'
Ignaceo Coal	2608'
Cottonwood Coal	2170'
Cahn Coal	2820'
Picture Cliffs	2864'
Picture Cliffs_B	2927'

updated: 4/2/2010