




COLEMAN OIL & GAS, INC.

Bryan Lewis
e-mail: cogblewis@yahoo.com

Monday, May 19, 2003



 Ms. Lori Wrotenbery
New Mexico Oil Conservation Division
1220 South Saint Francis Drive
Santa Fe, NM 87505-4000

Mr. Jim Lovato
Bureau Of Land Management
1235 La Plata Highway, Suite A
Farmington, NM 87401

RE: **Application for Surface Commingling**

Dear Ms. Wrotenbery and Mr. Lovato :

This is a request for approval to surface commingle the gas production from the wells listed below:

Township 26 North, Range 11 West, NMPM

Ricky #1R	Section 18	NWNW	Basin Fruitland Coal	30-045-31165
Ricky Com #2R	Section 18	NWSW	Basin Fruitland Coal	30-045-31166
Meg Com #1	Section 19	SWNE	Basin Fruitland Coal	30-045-30999
Meg #2	Section 19	NWNW	Basin Fruitland Coal	30-045-30998

San Juan County, New Mexico

1. **Proposed System.** Surface commingling will allow production through only one compressor as opposed to a compressor for each well, thereby allowing the containment of operating costs and prolonging the economic life of the wells. The wells are commingled upstream of a CPD meter (number 95 115 01) to reduce measurement costs. All wells have an allocation meter on location. El Paso will maintain the CPD meter and the applicant, Coleman Oil & Gas, Inc. ("Coleman") will maintain the allocation meters. The gas will flow into the El Paso Natural Gas gathering system, adjacent to the Dugan Federal #7 well in the SWSW of Section 07 – Twp 26 N – Rge 11 W.

Application for Surface Commingling

Monday, May 19, 2003

Page 2

2. **Location Map.** Exhibit 1 is a topographic map showing the locations of the wells subject to this Application for Surface Commingling.
3. **Well, Locations and Lease Numbers.** Exhibits 2A – 2D consist of acreage dedication plats for the subject wells. The wells and acreage dedications are tabulated below.

Ricky #1R	Section 18	W/2	NOO-C-14-20-5390 NOO-C-14-20-5389
Ricky Com #2R	Section 18	W/2	NOO-C-14-20-5389 NOO-C-14-20-5390
Meg Com #1	Section 19	N/2	NO-G-0103-1465 NO-G-0103-1466
Meg #2	Section 19	N/2	NO-G-0103-1466 NO-G-0103-1465

Exhibit 3 is a list of the royalty, overriding royalty and working interest owners in the wells.

4. **Schematic Diagram.** Exhibits 5 through 5D are schematic diagrams of the proposed surface commingling facilities.
5. **Lease Use Gas.** Each well has a pumping unit that uses approximately 1.5 MCFD of lease use gas and a separator that uses approximately 0.5 MCFD of lease use gas. One 110 HP compressor serves the system using approximately 24 MCFD of lease use gas which is allocated equally between the wells subject to this Application for Surface Commingling. When and if additional equipment is added to the system lease use gas to operate such equipment will be split equally between producing wells upstream of such equipment.
6. **Mechanical Integrity.** The entire system of flow lines will most likely be 4.0" O.D. - 0.642" wall thickness PE3408 SDR7 poly pipe with an internal yield of 267 psig. This line and all connections will be pressure tested to 150 psig.

As of the date of this Application the 4.0" poly line runs only between the Meg Com #1 and Ricky Com #2R wells. A 2 - 3/8" steel temporary surface pipeline runs from the Ricky Com #2R well to the El Paso tie in. This temporary surface pipeline has been tested to 150 psig. The temporary surface pipeline will be replaced with poly pipe in the near future. The production on these wells is inclining and the current use of the temporary surface pipeline allows Coleman the opportunity to review and determine the most suitable size of permanent poly pipe to use.

Application for Surface Commingling

Monday, May 19, 2003

Page 3

The maximum shut-in surface wellhead pressure in this area is 110 psig. The average operating pressure of El Paso's lateral 10 D 1 is 70 - 90 psig; the maximum allowable operating pressure (MAOP) is approximately 150 psig.

7. **Production – Gravity/BTU.** The wells that are the subject of this Application are new drills therefore no production data is currently available. Gas analysis reports are attached as Exhibits 4A – 4D. None of the wells produces liquid hydrocarbons.
8. **Allocation Formula.** All wells have an allocation meter on location. The production assigned to each well will be the integrated volume from the CPD meter less the sum of the other allocation meters plus lease use gas. As an example, the CPD meter indicates total production of 3,325 MCF. Other well 1 allocation meter indicates 400 MCF production. Other well 2 allocation meter indicates 350 MCF production. Other well 3 allocation meter indicates 1,200 MCF production. Other well 4 allocation meter indicates 275 MCF production. The sum of these other well allocation meters is 2,225 MCF. CPD meter of 3,325 MCF less the sum of other allocation meters of 2,225 MCF plus lease use gas of 2 MCF is 1,102 MCF, the calculated production of the well in question. When the sum of the allocation meters doesn't equal the CPD meter, the gas production from each well will be calculated according to the volume its allocation meter indicates was produced divided by the sum of all of the allocation meters (percent) multiplied by the CPD meter indicated production plus lease use gas. As an example, the CPD meter indicates an integrated volume of 40,000 MCF gas was produced but the sum of the allocation meters indicate that 39,000 MCF was produced. The allocation meter of the well in question indicates 10,000 MCF of production divided by the sum of the allocation meters (39,000 MCF) equals 25.64% multiplied by the CPD meter volume of 40,000 MCF equals 10,256 MCF plus lease use gas of 60 MCF totals 10,316 MCF, the calculated production of the well in question. Royalties will be paid on the volumes according to applicable MMS and State of New Mexico guidelines.
9. **Line Purging.** It is anticipated that line purging will occur infrequently. Any lost gas due to purging the system will be allocated equally to each of the wells.
10. **Purged Fluids.** Any fluids purged will be natural gas and condensed water vapor.
11. **Meter Calibration Schedule.** El Paso will calibrate the CPD meter at least once each quarter, more frequently with higher gas volumes. Coleman will calibrate the allocation meters semi annually.
12. **Gas Analysis Schedule.** El Paso Field Services will analyze the gas from the commingled stream at least twice a year, more frequently with higher gas volumes.
13. **Effective Date.** It is requested that the approval for the Surface Commingling contemplated herein be April 06, 2003, the date the Ricky #1R well was first

Application for Surface Commingling

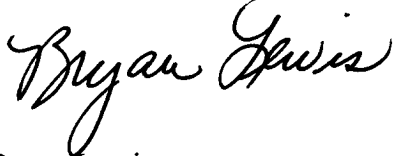
Monday, May 19, 2003

Page 4

delivered. The system has been operational since March 11, 2003, the date the Ricky Com #2R was first delivered.

Sincerely,

COLEMAN OIL & GAS, INC.

A handwritten signature in cursive script that reads "Bryan Lewis".

Bryan Lewis
Landman

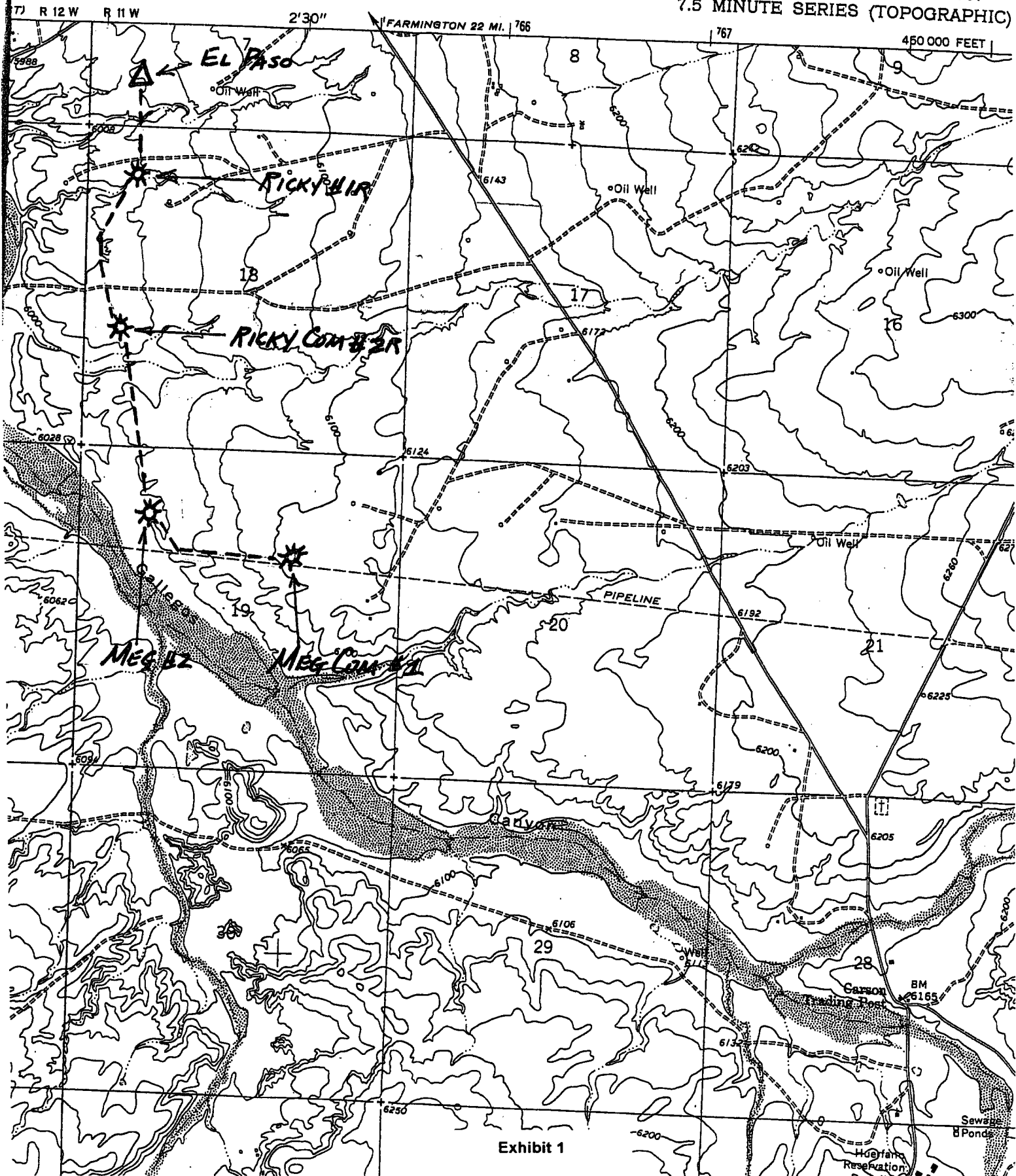
Attachments:

<i>Exhibit 1</i>	<i>Topographic maps</i>
<i>Exhibit 2A - 2D</i>	<i>Acreage dedication plats</i>
<i>Exhibit 3</i>	<i>List of owners in leases</i>
<i>Exhibit 4A - 4D</i>	<i>Gas Analysis reports</i>
<i>Exhibit 5 - 5D</i>	<i>Schematic Diagrams</i>

cc:

*Mr. Frank Chavez, Supervisor District 3
New Mexico Oil Conservation Division
1000 Rio Brazos Road
Aztec, NM 87410*

CARSON TRADING POST QUADRAN
NEW MEXICO—SAN JUAN CO.
7.5 MINUTE SERIES (TOPOGRAPHIC)



District I
PO Box 1980, Hobbs, NM 88241-1980

District II
PO Drawer 00, Artesia, NM 88211-0719

District III
1000 Rio Brazos Rd., Aztec, NM 87410

District IV
PO Box 2088, Santa Fe, NM 87504-2088

State of New Mexico
Energy, Minerals & Natural Resources Department

OIL CONSERVATION DIVISION
PO Box 2088
Santa Fe, NM 87504-2088

Form C-102
Revised February 21, 1994
Instructions on back
Submit to Appropriate District Office
State Lease - 4 Copies
Fee Lease - 3 Copies

☐ AMENDED REPORT

WELL LOCATION AND ACREAGE DEDICATION PLAT

*API Number		*Pool Code 77310	*Pool Name GALLEGOS FRUITLAND SAND PICTURED CLIFFS, SOUTH	
*Property Code		*Property Name RICKY		*Well Number 1R
*GRID No. 4838		*Operator Name COLEMAN OIL & GAS, INC.		*Elevation 6034'

¹⁰ Surface Location

UL or lot no.	Section	Township	Range	Lot Idn	Feet from the	North/South line	Feet from the	East/West line	County
D	18	26N	11W		765	NORTH	830	WEST	SAN JUAN

¹¹ Bottom Hole Location If Different From Surface

UL or lot no.	Section	Township	Range	Lot Idn	Feet from the	North/South line	Feet from the	East/West line	County

¹² Dedicated Acres 158.91 Acres - (NW/4)	¹³ Joint or Infill	¹⁴ Consolidation Code	¹⁵ Order No.
--	-------------------------------	----------------------------------	-------------------------

NO ALLOWABLE WILL BE ASSIGNED TO THIS COMPLETION UNTIL ALL INTERESTS HAVE BEEN CONSOLIDATED OR A NON-STANDARD UNIT HAS BEEN APPROVED BY THE DIVISION

¹⁶ LOT 1 LOT 2 LOT 3 LOT 4		¹⁷ OPERATOR CERTIFICATION I hereby certify that the information contained herein is true and complete to the best of my knowledge and belief Signature _____ Printed Name _____ Title _____ Date _____ ¹⁸ SURVEYOR CERTIFICATION I hereby certify that the well location shown on this plat was plotted from field notes of actual surveys made by me or under my supervision, and that the same is true and correct to the best of my belief. Date of Survey: APRIL 25, 2002 Signature and Seal of Professional Surveyor JASON C. EDWARDS Certificate Number 15269
---	--	--

District I
PO Box 1980, Hobbs, NM 88241-1980

District II
PO Drawer 00, Artesia, NM 88211-0719

District III
1000 Rio Brazos Rd., Aztec, NM 87410

District IV
PO Box 2088, Santa Fe, NM 87504-2088

State of New Mexico
Energy, Minerals & Natural Resources Department

OIL CONSERVATION DIVISION
PO Box 2088
Santa Fe, NM 87504-2088

Form C-102
Revised February 21, 1994
Instructions on back
Submit to Appropriate District Office
State Lease - 4 Copies
Fee Lease - 3 Copies

☐ AMENDED REPORT

WELL LOCATION AND ACREAGE DEDICATION PLAT

*API Number		*Pool Code 71629	*Pool Name BASIN FRUITLAND COAL
*Property Code	*Property Name RICKY COM		*Well Number 2R
*GRID No. 4838	*Operator Name COLEMAN OIL & GAS, INC.		*Elevation 6032'


¹⁰ Surface Location

UL or lot no. L	Section 18	Township 26N	Range 11W	Lot Idn	Feet from the 1845	North/South line SOUTH	Feet from the 745	East/West line WEST	County SAN JUAN
--------------------	---------------	-----------------	--------------	---------	-----------------------	---------------------------	----------------------	------------------------	--------------------

¹¹ Bottom Hole Location If Different From Surface

UL or lot no.	Section	Township	Range	Lot Idn	Feet from the	North/South line	Feet from the	East/West line	County
¹² Dedicated Acres 317.96 Acres - (W/2)					¹³ Joint or Infill	¹⁴ Consolidation Code	¹⁵ Order No.		

NO ALLOWABLE WILL BE ASSIGNED TO THIS COMPLETION UNTIL ALL INTERESTS HAVE BEEN CONSOLIDATED
OR A NON-STANDARD UNIT HAS BEEN APPROVED BY THE DIVISION

¹⁶ 1302.84' LOT 1	1321.98'	2643.96'	¹⁷ OPERATOR CERTIFICATION I hereby certify that the information contained herein is true and complete to the best of my knowledge and belief. <i>Michael T. Hanes</i> Signature <i>Michael T. Hanes</i> Printed Name <i>Engineer</i> Title <i>8/9/02</i> Date ¹⁸ SURVEYOR CERTIFICATION I hereby certify that the well location shown on this plat was plotted from field notes of actual surveys made by me or under my supervision, and that the same is true and correct to the best of my belief. Date of Survey: APRIL 25, 2002 Signature and Seal of Professional Surveyor  <i>JASON C. EDWARDS</i> Certificate Number 15269
LOT 2			
LOT 3			
LOT 4	1321.32'	2642.64'	

5280.00' 18 5289.24'

745' 1845'

1306.80'

District I
PO Box 1980, Hobbs, NM 88241-1980

District II
PO Drawer 00, Artesia, NM 88211-0719

District III
1000 Rio Brazos Rd., Aztec, NM 87410

District IV
PO Box 2088, Santa Fe, NM 87504-2088

State of New Mexico
Energy, Minerals & Natural Resources Department

OIL CONSERVATION DIVISION
PO Box 2088
Santa Fe, NM 87504-2088

Form C-102

Revised February 21, 1994

Instructions on back

Submit to Appropriate District Office

State Lease - 4 Copies

Fee Lease - 3 Copies

☐ AMENDED REPORT

WELL LOCATION AND ACREAGE DEDICATION PLAT

*API Number		*Pool Code 71629	*Pool Name BASIN FRUITLAND COAL
*Property Code	*Property Name MEG COM		*Well Number 1
*GRID No. 004838	*Operator Name COLEMAN OIL & GAS, INC.		*Elevation 5102'

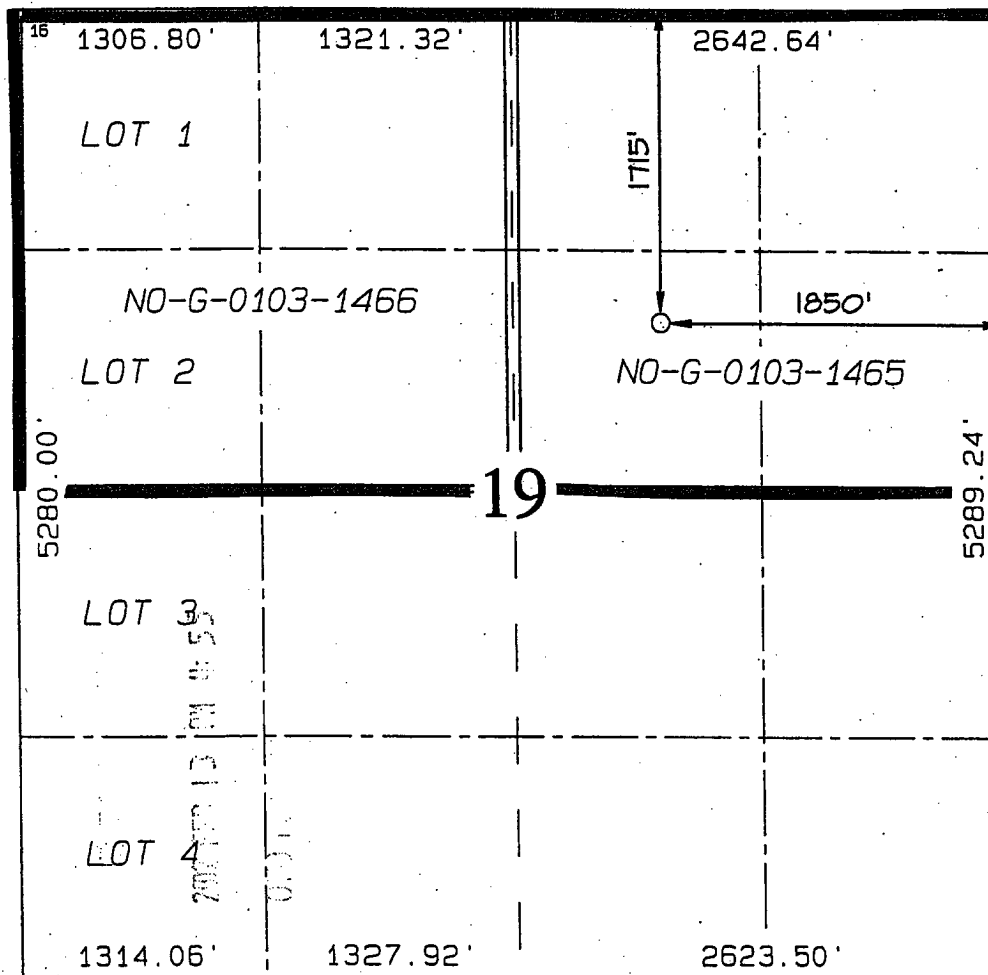
¹⁰ Surface Location

UL or lot no.	Section	Township	Range	Lot Idn	Feet from the	North/South line	Feet from the	East/West line	County
G	19	26N	11W		1715	NORTH	1850	EAST	SAN JUAN

¹¹ Bottom Hole Location If Different From Surface

UL or lot no.	Section	Township	Range	Lot Idn	Feet from the	North/South line	Feet from the	East/West line	County
¹² Dedicated Acres 319.13 Acres - (N/2)					¹³ Joint or Infill N	¹⁴ Consolidation Code Y	¹⁵ Order No.		

NO ALLOWABLE WILL BE ASSIGNED TO THIS COMPLETION UNTIL ALL INTERESTS HAVE BEEN CONSOLIDATED
OR A NON-STANDARD UNIT HAS BEEN APPROVED BY THE DIVISION



¹⁷ OPERATOR CERTIFICATION

I hereby certify that the information
contained herein is true and complete
to the best of my knowledge and belief

Paul C. Thompson
Signature

Paul C. Thompson

Printed Name

Agent

Title

2/11/02

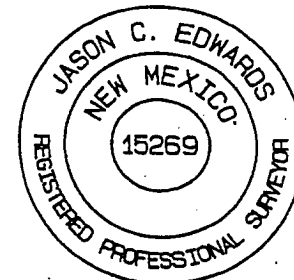
Date

¹⁸ SURVEYOR CERTIFICATION

I hereby certify that the well location
shown on this plat was plotted from field
notes of actual surveys made by me or under
my supervision, and that the same is true
and correct to the best of my belief.

Date of Survey: JULY 18, 2001

Signature and Seal of Professional Surveyor



JASON C. EDWARDS
Certificate Number 15269

District I
PO Box 1980, Hobbs, NM 88241-1980

District II
PO Drawer DD, Artesia, NM 88211-0719

District III
1000 Rio Brazos Rd., Aztec, NM 87410

District IV
PO Box 2088, Santa Fe, NM 87504-2088

State of New Mexico
Energy, Minerals & Natural Resources Department

OIL CONSERVATION DIVISION
PO Box 2088
Santa Fe, NM 87504-2088

Form C-102
Revised February 21, 1994
Instructions on back
Submit to Appropriate District Office
State Lease - 4 Copies
Fee Lease - 3 Copies

☐ AMENDED REPORT

WELL LOCATION AND ACREAGE DEDICATION PLAT

*API Number		*Pool Code 77310	*Pool Name GALLEGOS FRUITLAND SAND PICTURED CLIFFS, SOUTH	
*Property Code	*Property Name MEG		*Well Number 2	
*OGRID No. 004838	*Operator Name COLEMAN OIL & GAS, INC.		*Elevation 6024'	

¹⁰ Surface Location

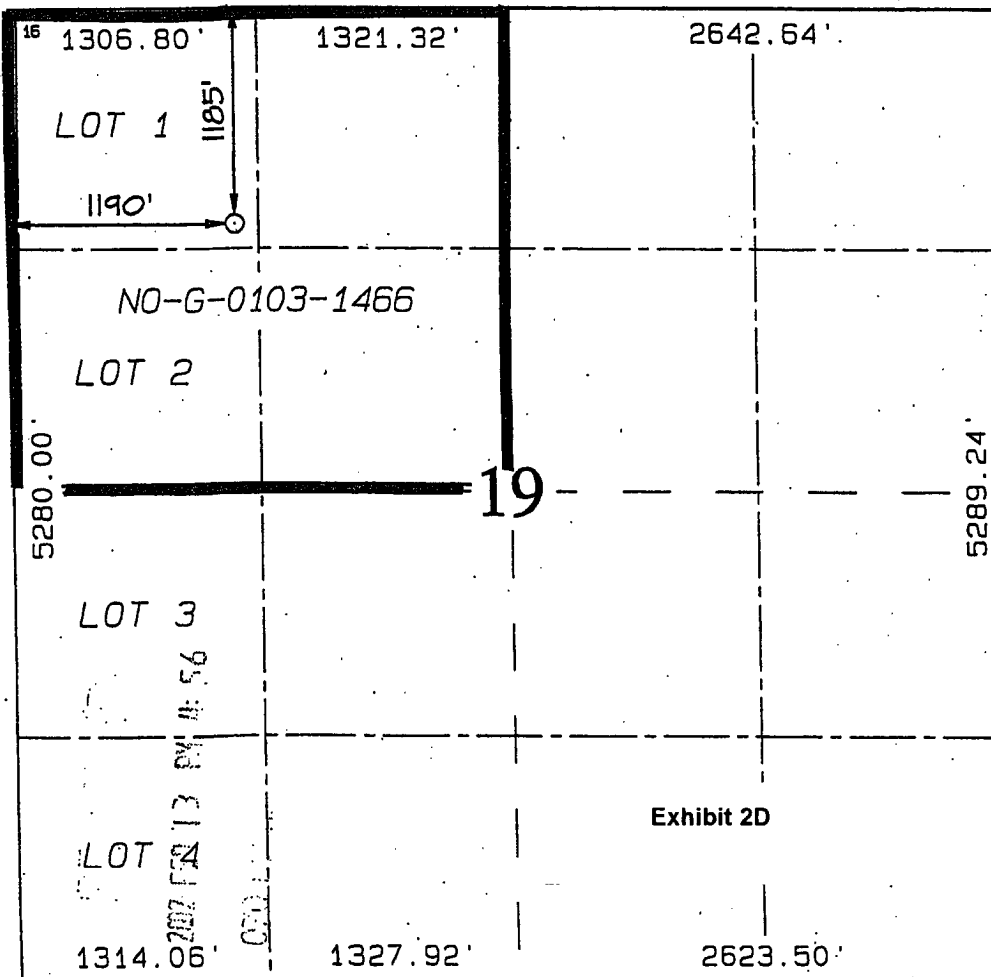
UL or lot no.	Section	Township	Range	Lot Idn	Feet from the	North/South line	Feet from the	East/West line	County
D	19	26N	11W		1185	NORTH	1190	WEST	SAN JUAN

¹¹ Bottom Hole Location If Different From Surface

UL or lot no.	Section	Township	Range	Lot Idn	Feet from the	North/South line	Feet from the	East/West line	County

¹² Dedicated Acres 159.13 Acres - (NW/4)	¹³ Joint or Infill N	¹⁴ Consolidation Code	¹⁵ Order No.
--	------------------------------------	----------------------------------	-------------------------

NO ALLOWABLE WILL BE ASSIGNED TO THIS COMPLETION UNTIL ALL INTERESTS HAVE BEEN CONSOLIDATED OR A NON-STANDARD UNIT HAS BEEN APPROVED BY THE DIVISION



¹⁷ OPERATOR CERTIFICATION

I hereby certify that the information contained herein is true and complete to the best of my knowledge and belief

Paul C. Thompson
Signature

Paul C. Thompson
Printed Name
Agent

Title
2/11/02

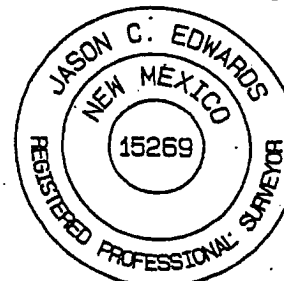
Date

¹⁸ SURVEYOR CERTIFICATION

I hereby certify that the well location shown on this plat was plotted from field notes of actual surveys made by me or under my supervision, and that the same is true and correct to the best of my belief.

Date of Survey: JULY 18, 2001

Signature and Seal of Professional Surveyor



JASON C. EDWARDS
Certificate Number 15269

EXHIBIT "3" **LIST OF OWNERS**

<u>Ricky #1R</u>	<u>Ricky Com #2R</u>	<u>Meg Com #1</u>	<u>Meg #2</u>
NOOC 1420-5380	NOOC 1420-5389	NOG 0103-1465	NOG 0103-1466
NOOC 1420-5389	NOOC 1420-5380	NOG 0103-1466	NOG 0103-1465

REVENUE INTEREST

Royalty Owners			
DOI - BIA	0.16666667	0.20000000	0.20000000
Overriding Royalty Owners			
Four Star Oil & Gas Co.	0.01555550	0.00000000	0.00000000
Pitco Production	0.03125000	0.00000000	0.00000000
Shear Inc.	0.00444400	0.00000000	0.00000000
Richard D. Simmons, Sr.	0.01000000	0.00000000	0.00000000
Working Interest Owners			
Coleman Oil & Gas, Inc. et al	0.77208383	0.80000000	0.80000000
Total Revenue Interests	1.00000000	1.00000000	1.00000000



230 AFTON PLACE
FARMINGTON, N.M. 87401
(505) 325-6622

ANALYSIS NO. CM230011
CUST. NO. 18200 - 10210

WELL/LEASE INFORMATION

CUSTOMER NAME	COLEMAN OIL AND GAS INC.	SOURCE	WELL HEAD
WELL NAME	RICKY 1R	PRESSURE	11 PSIG
COUNTY/ STATE	SAN JUAN NM	SAMPLE TEMP	DEG.F
LOCATION		WELL FLOWING	N/A
FIELD		DATE SAMPLED	3/10/03
FORMATION	FRUITLAND COAL	SAMPLED BY	BRUCE TAYLOR
CUST.STN.NO.		FOREMAN/ENGR.	

REMARKS WELL VENTING
CHARGED WITH HELIUM TO 30#
UNNORMALIZED MOLE PERCENT = 62.897

ANALYSIS

COMPONENT	MOLE %	GPM**	B.T.U.*	SP.GR *
NITROGEN	0.864	0.0000	0.00	0.0084
CO2	0.886	0.0000	0.00	0.0135
METHANE	91.605	0.0000	927.32	0.5075
ETHANE	3.693	0.9879	65.51	0.0383
PROPANE	1.490	0.4106	37.58	0.0227
I-BUTANE	0.482	0.1577	15.71	0.0097
N-BUTANE	0.411	0.1296	13.44	0.0082
I-PENTANE	0.207	0.0757	8.30	0.0052
N-PENTANE	0.109	0.0395	4.38	0.0027
HEXANE PLUS	0.253	0.1104	13.01	0.0081
TOTAL	100.000	1.9114	1,085.25	0.6243

* @ 14.730 PSIA DRY & UNCORRECTED FOR COMPRESSIBILITY

** @ 14.730 PSIA & 60 DEG. F.

COMPRESSIBILITY FACTOR	(1/Z)	1.0025
BTU/CU.FT (DRY) CORRECTED FOR	(1/Z)	1,088.1
BTU/CU.FT (WET) CORRECTED FOR	(1/Z)	1,069.2
REAL SPECIFIC GRAVITY		0.6259

ANALYSIS RUN AT 14.730 PSIA & 60 DEGREES F

DRY BTU @ 14.650	1,082.2
DRY BTU @ 14.696	1,085.6
DRY BTU @ 14.730	1,088.1
DRY BTU @ 15.025	1,109.9

CYLINDER #	041
CYLINDER PRESSURE	PSIG
DATE RUN	3/17/03
ANALYSIS RUN BY	DAWN BLASSINGAME



2030 AFTON PLACE
FARMINGTON, N.M. 87401
(505) 325-6622

ANALYSIS NO. CM230009
CUST. NO. 18200 - 10205

WELL/LEASE INFORMATION

CUSTOMER NAME	COLEMAN OIL AND GAS INC.	SOURCE	METER RUN
WELL NAME	RICKY COM 2R	PRESSURE	46 PSIG
COUNTY/ STATE	SAN JUAN NM	SAMPLE TEMP	40 DEG.F
LOCATION		WELL FLOWING	Y
FIELD		DATE SAMPLED	3/4/03
FORMATION	FRUITLAND COAL	SAMPLED BY	MIKE HANSON
CUST.STN.NO.		FOREMAN/ENGR.	

REMARKS

ANALYSIS

COMPONENT	MOLE %	GPM**	B.T.U.*	SP.GR *
NITROGEN	0.222	0.0000	0.00	0.0021
CO2	2.141	0.0000	0.00	0.0325
METHANE	95.374	0.0000	965.47	0.5283
ETHANE	2.247	0.6011	39.86	0.0233
PROPANE	0.009	0.0025	0.23	0.0001
I-BUTANE	0.002	0.0007	0.07	0.0000
N-BUTANE	0.000	0.0000	0.00	0.0000
I-PENTANE	0.000	0.0000	0.00	0.0000
N-PENTANE	0.000	0.0000	0.00	0.0000
HEXANE PLUS	0.005	0.0022	0.26	0.0002
TOTAL	100.000	0.6064	1,005.89	0.5867

* @ 14.730 PSIA DRY & UNCORRECTED FOR COMPRESSIBILITY

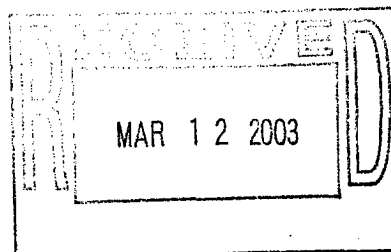
** @ 14.730 PSIA & 60 DEG. F.

COMPRESSIBILITY FACTOR (1/Z)	1.0021
BTU/CU.FT (DRY) CORRECTED FOR (1/Z)	1,008.0
BTU/CU.FT (WET) CORRECTED FOR (1/Z)	990.5
REAL SPECIFIC GRAVITY	0.5877

ANALYSIS RUN AT 14.730 PSIA & 60 DEGREES F

DRY BTU @ 14.650	1,002.5
DRY BTU @ 14.696	1,005.7
DRY BTU @ 14.730	1,008.0
DRY BTU @ 15.025	1,028.2

CYLINDER #	K059
CYLINDER PRESSURE	47 PSIG
DATE RUN	3/7/03
ANALYSIS RUN BY	DAWN BLASSINGAME





2030 AFTON PLACE
FARMINGTON, N.M. 87401
(505) 325-6622

ANALYSIS NO. CM230021
CUST. NO. 18200 - 10220

WELL/LEASE INFORMATION

CUSTOMER NAME	COLEMAN OIL AND GAS INC.	SOURCE	UPSTREAM METER TUBE
WELL NAME	MEG COM #1	PRESSURE	40 PSIG
COUNTY/ STATE	SAN JUAN NM	SAMPLE TEMP	DEG.F
LOCATION		WELL FLOWING	Y
FIELD		DATE SAMPLED	5/15/03
FORMATION		SAMPLED BY	BRUCE TAYLER
CUST.STN.NO.		FOREMAN/ENGR.	

REMARKS

ANALYSIS

COMPONENT	MOLE %	GPM**	B.T.U.*	SP.GR *
NITROGEN	0.217	0.0000	0.00	0.0021
CO2	2.393	0.0000	0.00	0.0384
METHANE	94.618	0.0000	957.82	0.5242
ETHANE	2.613	0.6990	46.35	0.0271
PROPANE	0.078	0.0215	1.97	0.0012
I-BUTANE	0.022	0.0072	0.72	0.0004
N-BUTANE	0.024	0.0076	0.78	0.0005
I-PENTANE	0.015	0.0055	0.60	0.0004
N-PENTANE	0.007	0.0025	0.28	0.0002
HEXANE PLUS	0.013	0.0057	0.67	0.0004
TOTAL	100.000	0.7489	1,009.19	0.5928

* @ 14.730 PSIA DRY & UNCORRECTED FOR COMPRESSIBILITY

** @ 14.730 PSIA & 60 DEG. F.

COMPRESSIBILITY FACTOR (1/Z) 1.0022
BTU/CU.FT (DRY) CORRECTED FOR (1/Z) 1,011.4
BTU/CU.FT (WET) CORRECTED FOR (1/Z) 996.1
REAL SPECIFIC GRAVITY 0.5941

ANALYSIS RUN AT 14.730 PSIA & 60 DEGREES F

DRY BTU @ 14.650 1,005.9
DRY BTU @ 14.696 1,009.1
DRY BTU @ 14.730 1,011.4
DRY BTU @ 15.025 1,031.7

CYLINDER # AZT047
CYLINDER PRESSURE 90 PSIG
DATE RUN 5/16/03
ANALYSIS RUN BY CHELLE DURBIN



2030 AFTON PLACE
FARMINGTON, N.M. 87401
(505) 325-6622

ANALYSIS NO. CM230022
CUST. NO. 18200 - 10225

WELL/LEASE INFORMATION

CUSTOMER NAME	COLEMAN OIL AND GAS INC.	SOURCE	UPSTREAM METER TUBE
WELL NAME	MEG #2	PRESSURE	32 PSIG
COUNTY/ STATE	SAN JUAN NM	SAMPLE TEMP	DEG.F
LOCATION		WELL FLOWING	Y
FIELD		DATE SAMPLED	5/15/03
FORMATION		SAMPLED BY	BRUCE TAYLOR
CUST.STN.NO.		FOREMAN/ENGR.	

REMARKS

ANALYSIS

COMPONENT	MOLE %	GPM**	B.T.U.*	SP.GR *
NITROGEN	0.192	0.0000	0.00	0.0019
CO2	2.457	0.0000	0.00	0.0373
METHANE	94.286	0.0000	954.48	0.5223
ETHANE	2.987	0.7990	52.96	0.0310
PROPANE	0.049	0.0135	1.24	0.0007
I-BUTANE	0.013	0.0043	0.42	0.0003
N-BUTANE	0.007	0.0022	0.23	0.0001
I-PENTANE	0.006	0.0022	0.24	0.0001
N-PENTANE	0.001	0.0004	0.04	0.0000
HEXANE PLUS	0.002	0.0009	0.10	0.0001
TOTAL	100.000	0.8224	1,009.71	0.5939

* @ 14.730 PSIA DRY & UNCORRECTED FOR COMPRESSIBILITY

** @ 14.730 PSIA & 60 DEG. F.

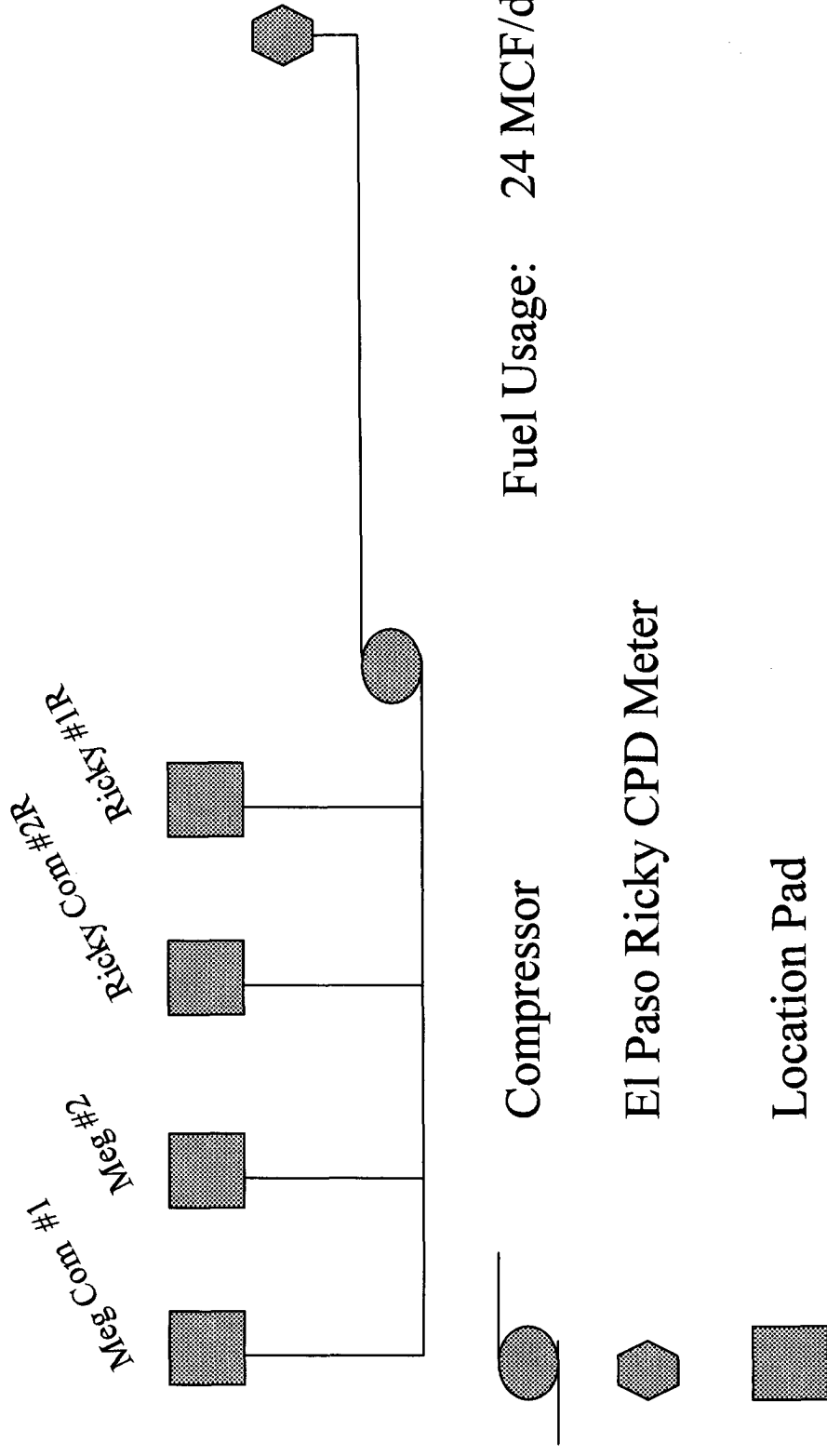
COMPRESSIBILITY FACTOR	(1/Z)	1.0022
BTU/CU.FT (DRY) CORRECTED FOR	(1/Z)	1,011.9
BTU/CU.FT (WET) CORRECTED FOR	(1/Z)	996.7
REAL SPECIFIC GRAVITY		0.5951

ANALYSIS RUN AT 14.730 PSIA & 60 DEGREES F

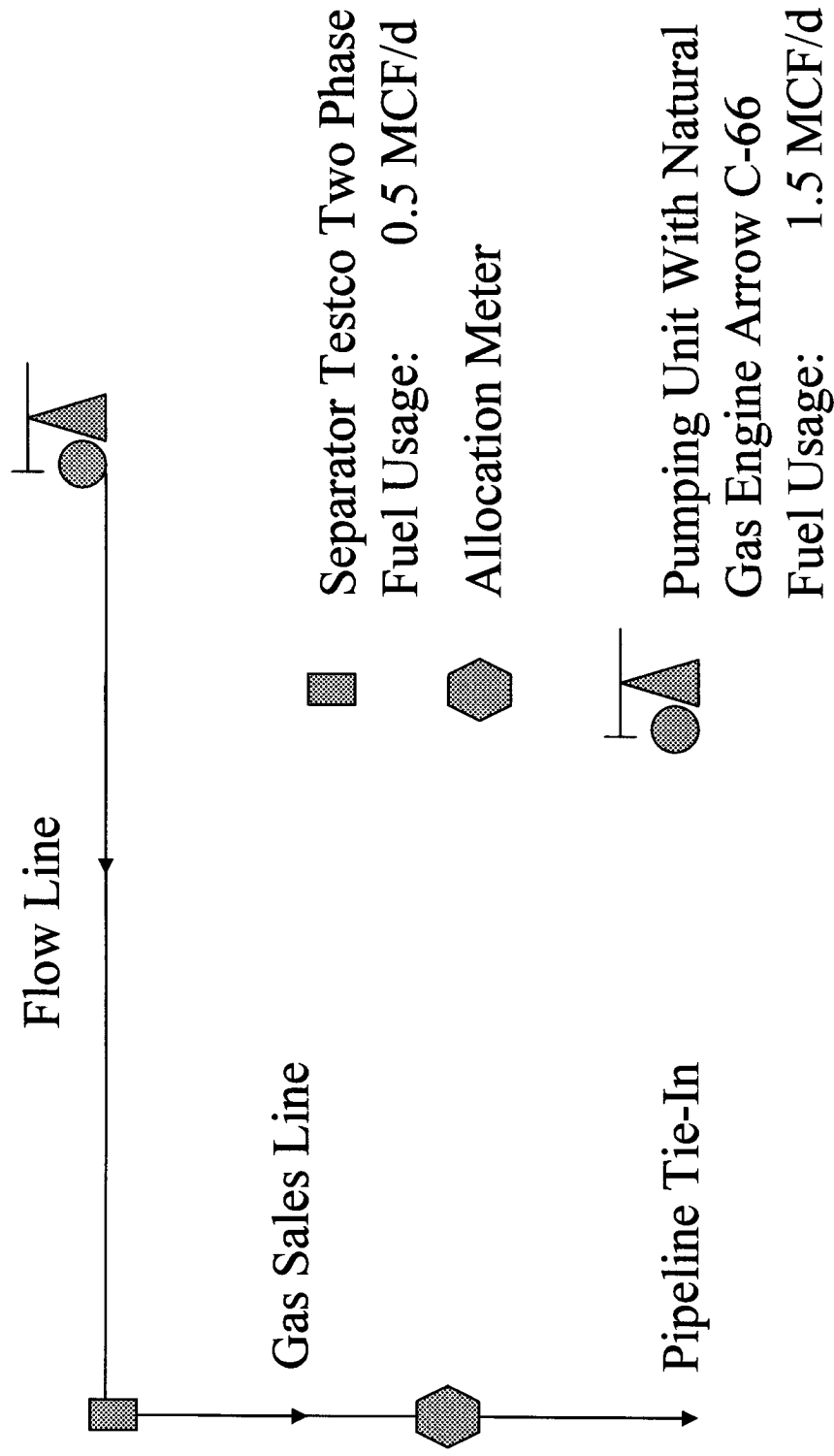
DRY BTU @ 14.650	1,006.4
DRY BTU @ 14.696	1,009.6
DRY BTU @ 14.730	1,011.9
DRY BTU @ 15.025	1,032.2

CYLINDER #	9EK0862
CYLINDER PRESSURE	74 PSIG
DATE RUN	5/16/03
ANALYSIS RUN BY	CHELLE DURBIN

Ricky CPD Surface Commingle



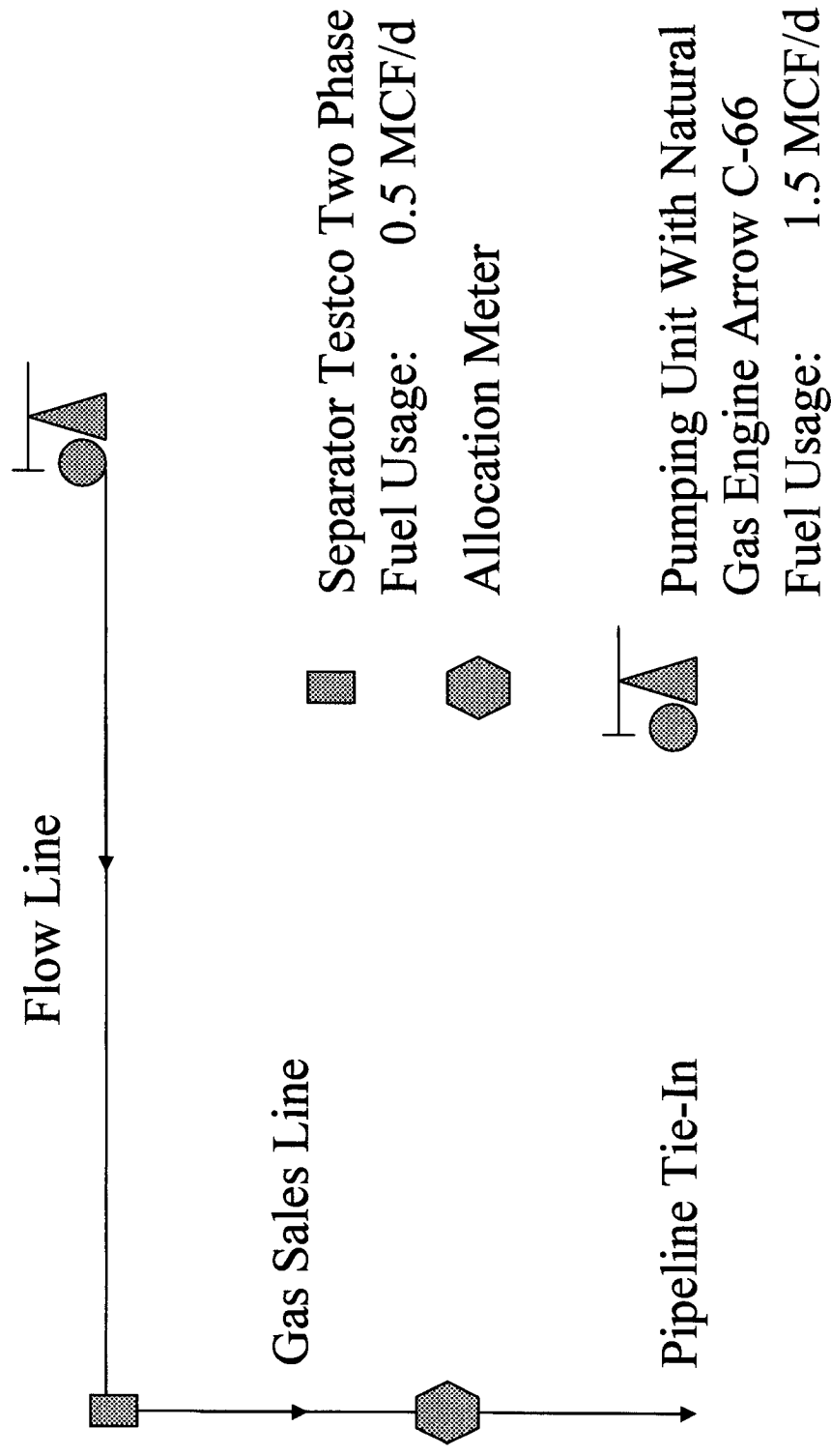
Ricky #1R Surface Facility



5/5/2003

Exhibit 5A

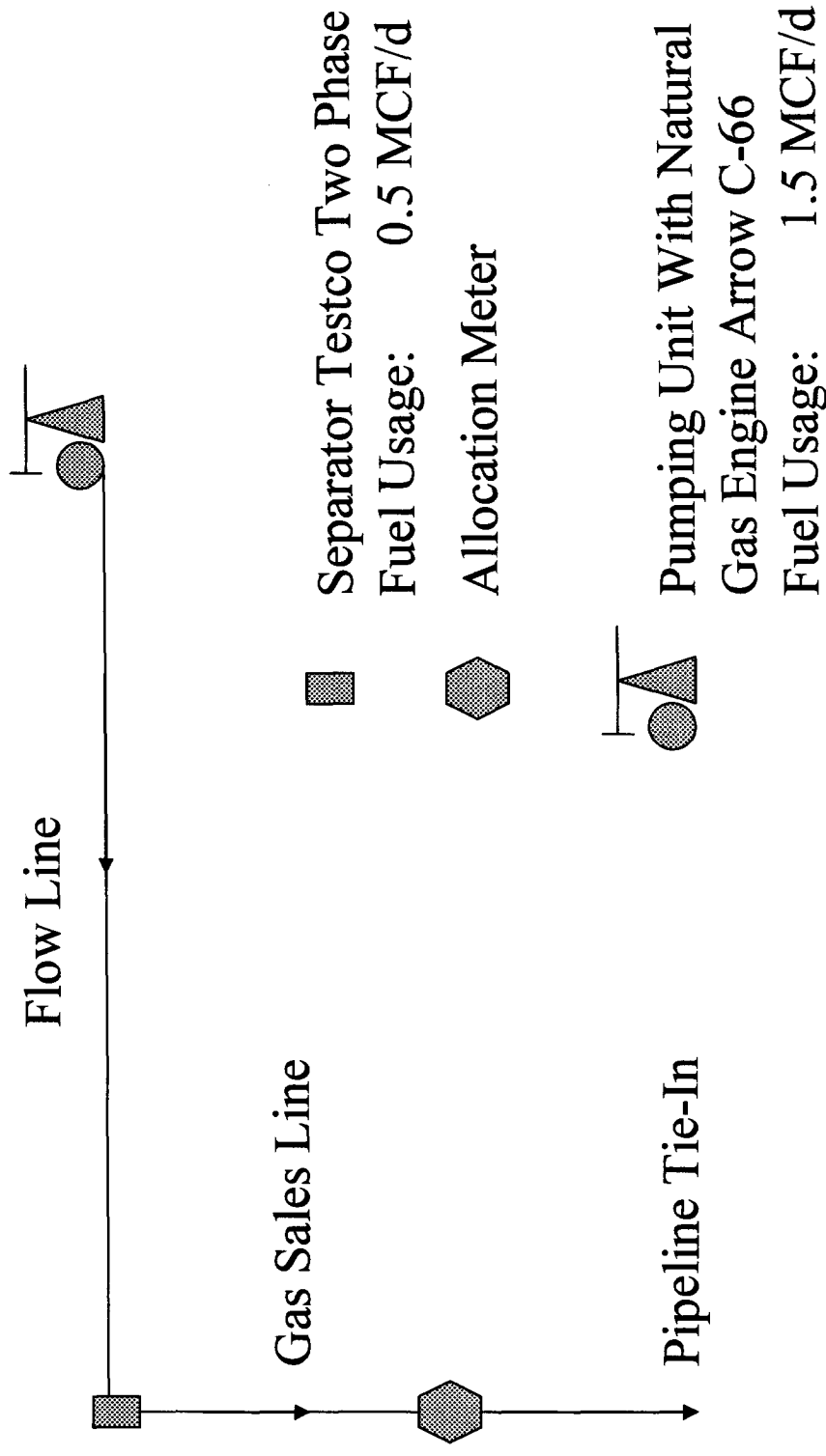
Ricky Com #2R Surface Facility



5/5/2003

Exhibit 5B

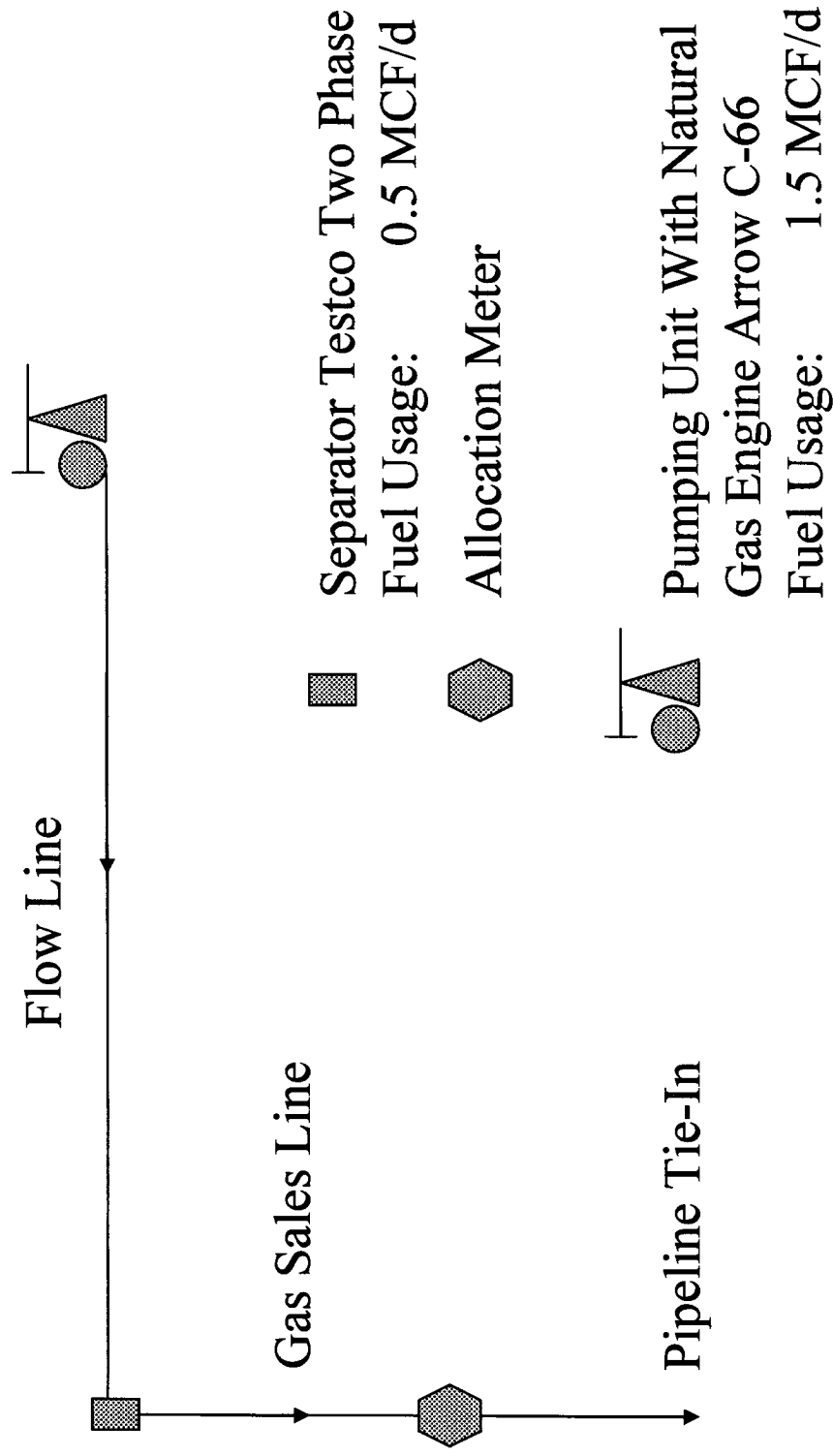
Meg #2 Surface Facility



5/5/2003

Exhibit 5C

Meg Com #1 Surface Facility



5/5/2003

Exhibit 5D