

District I  
1625 N. French Dr., Hobbs, NM 88240

District II  
1301 W. Grand Avenue, Artesia, NM 88210

District III  
1000 Rio Brazos Rd., Aztec, NM 87410

District IV  
1220 S. St. Francis Dr., Santa Fe, NM 87505

State of New Mexico  
Energy, Minerals & Natural Resources Department

OIL CONSERVATION DIVISION  
1220 South St. Francis Dr.  
Santa Fe, NM 87505

Form C-102  
Revised October 12, 2005  
Instructions on back  
Submit to Appropriate District Office  
State Lease - 4 Copies  
Fee Lease - 3 Copies

☒ AMENDED REPORT

WELL LOCATION AND ACREAGE DEDICATION PLAT

<sup>1</sup> API Number 30-039-23506	<sup>2</sup> Pool Code 97232 / 71599	<sup>3</sup> Pool Name BASIN MANCOS / BASIN DAKOTA
<sup>4</sup> Property Code 17033	<sup>5</sup> Property Name ROSA UNIT	<sup>6</sup> Well Number 108
<sup>7</sup> OGRID No 120782	<sup>8</sup> Operator Name WILLIAMS PRODUCTION COMPANY	<sup>9</sup> Elevation 6275'

<sup>10</sup> Surface Location

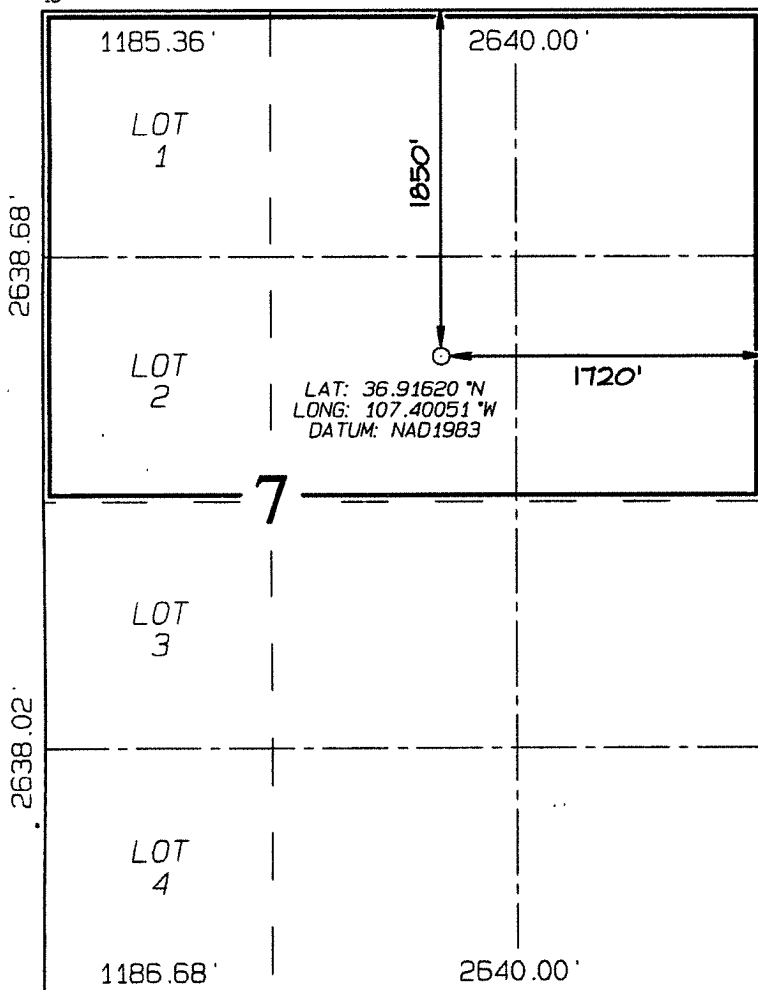
UL or lot no G	Section 7	Township 31N	Range 5W	Lot Idn	Feet from the 1850	North/South line NORTH	Feet from the 1720	East/West line EAST	County RIO ARriba
-------------------	--------------	-----------------	-------------	---------	-----------------------	---------------------------	-----------------------	------------------------	----------------------

<sup>11</sup> Bottom Hole Location If Different From Surface

UL or lot no.	Section	Township	Range	Lot Idn	Feet from the	North/South line	Feet from the	East/West line	County
								RCVD APR 19 '10	
<sup>12</sup> Dedicated Acres 231.86 Acres - (N/2)	<sup>13</sup> Joint or Infill	<sup>14</sup> Consolidation Code	<sup>15</sup> Order No. OIL CONS. DIV. DIST. 2						

NO ALLOWABLE WILL BE ASSIGNED TO THIS COMPLETION UNTIL ALL INTERESTS HAVE BEEN CONSOLIDATED  
OR A NON-STANDARD UNIT HAS BEEN APPROVED BY THE DIVISION

16



<sup>17</sup> OPERATOR CERTIFICATION

I hereby certify that the information contained herein is true and complete to the best of my knowledge and belief, and that this organization either owns a working interest or unleased mineral interest in the land including the proposed bottom-hole location or has a right to drill this well at this location pursuant to a contract with an owner of such a mineral or working interest, or to a voluntary pooling agreement or a compulsory pooling order heretofore entered by the division.

*Heather Ritey* 4/15/10  
Signature Date  
*Heather Ritey*  
Printed Name

<sup>18</sup> SURVEYOR CERTIFICATION

I hereby certify that the well location shown on this plat was plotted from field notes of actual surveys made by me or under my supervision, and that the same is true and correct to the best of my belief.

INFORMATION OF RECORD  
Date Drawn: MARCH 27, 2010  
Signature and Seal of Professional Surveyor



*Jason C. Edwards*  
Certificate Number 15269