

UNITED STATES
DEPARTMENT OF THE INTERIOR
BUREAU OF LAND MANAGEMENT

SUBMIT IN
DUPLICATE

(See other instructions on
reverse side)

FORM APPROVED
OMB NO 1004-0137
Expires February 28, 1995

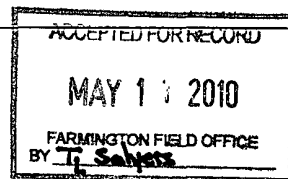
WELL COMPLETION OR RECOMPLETION REPORT AND LOG*						5 LEASE DESIGNATION AND LEASE NO. NM-03189	
1a TYPE OF WELL <input type="checkbox"/> OIL WELL <input checked="" type="checkbox"/> GAS WELL <input type="checkbox"/> DRY <input type="checkbox"/> OTHER						6 IF INDIAN, ALLOTTEE OR	
b TYPE OF COMPLETION <input checked="" type="checkbox"/> NEW WELL <input type="checkbox"/> WORKOVER <input type="checkbox"/> DEEPEN <input type="checkbox"/> PLUG BACK <input type="checkbox"/> DIFF RESVR <input type="checkbox"/> OTHER						7 UNIT AGREEMENT NAME Cox Canyon Unit	
2 NAME OF OPERATOR WILLIAMS PRODUCTION COMPANY						8 FARM OR LEASE NAME, WELL NO. Cox Canyon Unit 4C	
3 ADDRESS AND TELEPHONE NO P.O. Box 640, Aztec, NM 87410 (505) 634-4208						9 API WELL NO 30-045-33170 - 0051	
4. LOCATION OF WELL (Report location clearly and in accordance with any State requirements)* At Surface 1675' FSL & 1690' FEL, sec 21, T32N, R11W At top production interval reported below: At total depth:						10. FIELD AND POOL, OR WILDCAT BLANCO MESA VERDE	
14 PERMIT NO						DATE ISSUED	
15. DATE SPUDDED 1-27-10						16 DATE T D REACHED 2-3-10	
17 DATE COMPLETED (READY TO PRODUCE) 4-29-10						18 ELEVATIONS (DK, RKB, RT, GR, ETC)* 6578' GR	
20 TOTAL DEPTH, MD & TVD 6049' MD						21 PLUG, BACK T D, MD & TVD 6023'	
22 IF MULTICOMP, HOW MANY 1						23 INTERVALS DRILLED BY	
24 PRODUCING INTERVAL(S), OF THIS COMPLETION - TOP, BOTTOM, NAME (MD AND TVD)* BLANCO MESAVERDE 4806' - 5899'						25. WAS DIRECTIONAL SURVEY MADE NO DIST. 3	
26 TYPE ELECTRIC AND OTHER LOGS RUN Array Induction, Compensated GR-Density-Neutron, CBL						27. WAS WELL CORED NO	

28 CASING REPORT (Report all strings set in well)					
CASING SIZE/GRADE	WEIGHT, LB/FT	DEPTH SET (MD)	HOLE SIZE	TOP OF CEMENT, CEMENTING RECORD	AMOUNT PULLED
9-5/8", K-55	36#	324' 944'	12-1/4"	1205x 450 63' - SURFACE	
7", K-55	23#	2375' 2758'	8-3/4"	360 SX - SURFACE	
29 LINER RECORD					
SIZE	TOP (MD)	BOTTOM (MD)	SACKS CEMENT*	SCREEN (MD)	PACKER SET (MD)
4-1/2"	2571'	6074'	295 618		
30 TUBING RECORD					
32 ACID, SHOT, FRACTURE, CEMENT SQUEEZE, ETC					
DEPTH INTERVAL (MD)		AMOUNT AND KIND OF MATERIAL USED			
3 rd Stage - Total of 64, .034" holes		4806' - 5192' Fraced with 78,200# 20/40 Ottawa sand			
2 nd Stage - Total of 54, 0.34' holes		5248' - 5530' Fraced with 79,461# 20/40 Ottawa sand			
1 st Stage - Total of 55, 0.34" holes		5556' - 5899' Fraced with 82,282# 20/40 Ottawa sand			

33 PRODUCTION							
DATE OF FIRST PRODUCTION	PRODUCTION METHOD (Flowing, gas lift, pumping-size and type of pump)	WELL STATUS (PRODUCING OR SI) Shut in - wait on tie in					
DATE OF TEST 4-28-10	TESTED 10 hr	CHOKE SIZE 2" - open line	PROD'N FOR TEST PERIOD	OIL - BBL	GAS - MCF	WATER - BBL	GAS-OIL RATIO
FLOW TBG PRESS N/A	CASING PRESSURE 70 #	CALCULATED 24-HOUR RATE		OIL - BBL	GAS - MCF 1948 p/day	WATER - BBL	OIL GRAVITY-API (CORR)
34 DISPOSITION OF GAS (Sold, used for fuel, vented, etc) TO BE SOLD						TEST WITNESSED BY Weldon Higgins	

35 LIST OF ATTACHMENTS SUMMARY OF POROUS ZONES, WELLBORE DIAGRAM	
36 I hereby certify that the foregoing and attached information is complete and correct as determined from all available records	
SIGNED <u>Carroll Higgins</u>	TITLE <u>Permit Supervisor</u> DATE <u>5-7-10</u>

NMOCD#



37 SUMMARY OF POROUS ZONES (Show all important zones of porosity and contents thereof, cored intervals, and all drill-stem, tests, including depth interval tested, cushion used, time tool open, flowing and shut-in pressures, and recoveries)

38 GEOLOGIC MARKERS

FORMATION	TOP	BOTTOM	DESCRIPTION, CONTENTS, ETC		NAME	TOP ✓		
						NAME	MEASURED DEPTH	TRUE VERTICAL DEPTH
						KIRTLAND	1413'	
						FRUITLAND COAL	2832'	
						PICTURED CLIFFS	3281'	
						CLIFFHOUSE	5094'	
						MENEFEE	5194'	
						POINT LOOKOUT	5555'	
						MANCOS	5946'	

Cox Canyon #004C
Blanco Mesa Verde

Spud Date: 1/27/2010
 Completed 04/29/2010

Location:
 1675' FSL & 1690' FEL
 ALL Section 21(J), T32N, R11W
 San Juan Co, NM

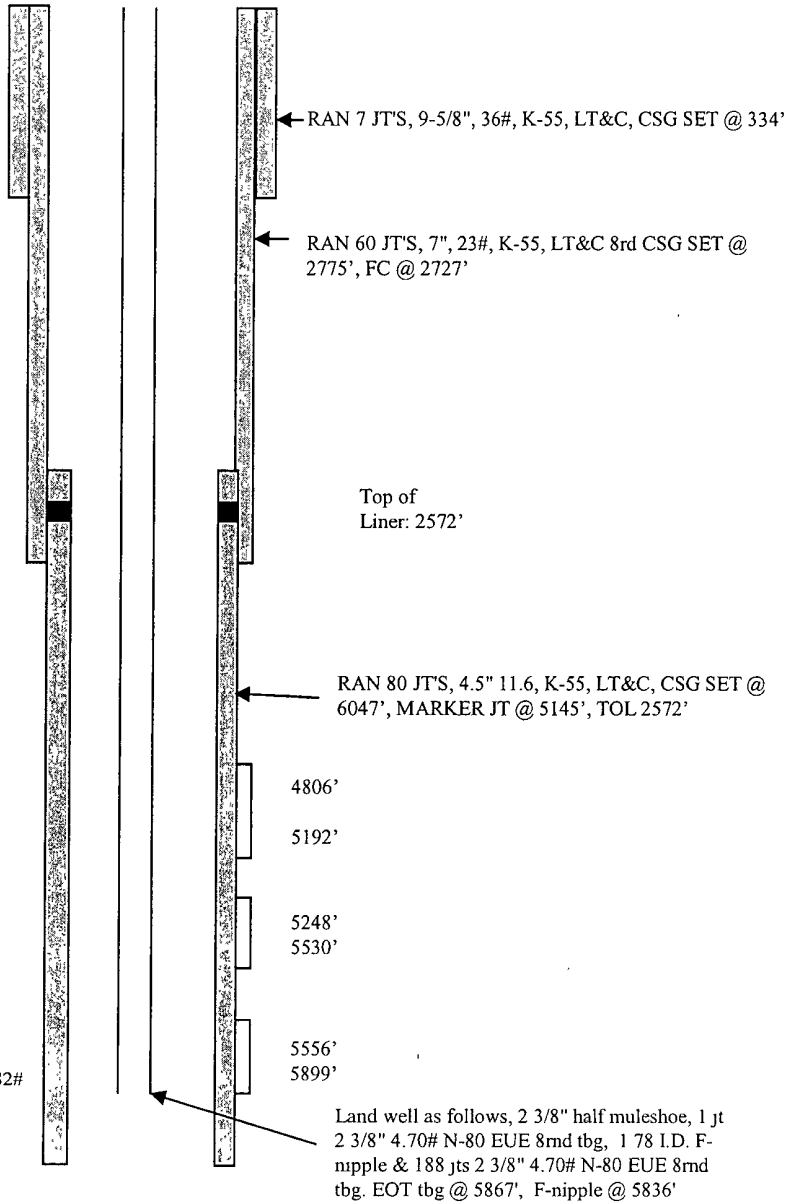
Elevation: 6578' GR
API #: 30-045-33170

<u>Tops</u>	<u>Depth</u>
Fruitland	2832'
Pictured Cliffs	3281'
Cliff House	5094'
Menefee	5194'
Point Lookout	5555'
Mancos	5946'

CliffHouse/upper Menefee 4806'-5192' (64, 0.35" holes)
 Frac with 78,200# 20/40 mesh Ottawa sand

PLO/lower Menefee 5248-5530' (54, 0 3/4" holes) Frac
 with 79,461# 20/40 mesh Ottawa sand

Lower PLO 5556'-5899' (55, 0 3/4" holes) Frac with 82,282#
 20/40 mesh Ottawa sand



TD @ 6049' ✓
 PBTD @ 6023' ✓

<i>HOLE SIZE</i>	<i>CASING</i>	<i>CEMENT</i>	<i>CU. FT.</i>	<i>CMT TOP</i>
12-1/4"	9-5/8", 36#	180 sxs	323 cu.ft.	surface
8-3/4"	7", 23#	360 sxs	828 cu.ft.	surface
6-1/4"	4-1/2", 11.6#	295 sxs	601 cu.ft.	2575' (CBL)