

UNITED STATES  
DEPARTMENT OF INTERIOR  
BUREAU OF LAND MANAGEMENT

RECEIVED

MAY 17 2010

FORM APPROVED  
Budget Bureau No. 1004-0135

Bureau of Land Management  
Farmingdale Field Office

SUNDRY NOTICE AND REPORTS ON WELLS

Do not use this form for proposals to drill or to deepen or reentry to a different reservoir. Use "APPLICATION TO DRILL" for permit for such proposals

Lease Designation and Serial No.  
SF-078767

6. If Indian, Allottee or Tribe Name

7. If Unit or CA, Agreement Designation

SUBMIT IN TRIPPLICATE

1. Type of Well  
Oil Well ☒ Gas Well ☐ Other ☐

8. Well Name and No.  
Rosa Unit #30B

2. Name of Operator  
WILLIAMS PRODUCTION COMPANY

9. API Well No.  
30-039-26601

3. Address and Telephone No.  
PO BOX 3102 MS 25-4, TULSA, OK 74101 (918) 573-3046

10. Field and Pool, or Exploratory Area  
BLANCO MV/BASIN DK

4. Location of Well (Footage, Sec., T., R., M., or Survey Description)  
20' FSL, 2360' FWL, SE/4 SW/4, SEC 12, T31N, R06W

11. County or Parish, State  
RIO ARRIBA, NEW MEXICO

CHECK APPROPRIATE BOX(S) TO INDICATE NATURE OF NOTICE, REPORT, OR OTHER DATA

TYPE OF SUBMISSION

TYPE OF ACTION

☒ Notice of Intent  
☐ Subsequent Report  
☐ Final Abandonment

Abandonment  
Recompletion  
Plugging Back  
Casing Repair  
Altering Casing  
☒ Other Commingling

Change of Plans  
New Construction  
Non-Routine Fracturing  
Water Shut-Off  
Conversion to Injection  
Dispose Water  
(Note: Report results of multiple completion on Well Completion or Recompletion Report and Log form.)

13. Describe Proposed or Completed Operations (Clearly state all pertinent details, and give pertinent dates, including estimated date of starting any proposed work. If well is directionally drilled, give subsurface locations and measured and true vertical depths for all markers and zones pertinent to this work.)\*

RCVD MAY 21 '10  
OIL CONS. DIV.  
DIST. 3

- Pre-approved Pool Division Order R-11363.
- Pools to be commingled: Blanco MV 72319, Basin Dakota 71599.
- Perforated intervals: Blanco MV 4777' - 5954', Basin Dakota 8030' - 8109'.
- Fixed percentage allocations will be submitted once the completion profile analysis is complete.
- Commingling will not reduce the value of reserves.
- Notification of working, royalty, and overriding royalty interest owners; no notice is required per R-11363.
- The OCD has been notified and has approved the work on sundry notice form C-103.

Please see attached for commingling procedure:

DHC 3418 AZ

14. I hereby certify that the foregoing is true and correct

Signed

*Rachel Lipperd*  
Rachel Lipperd

Title Engineering Technician II

Date May 14, 2010

(This space for Federal or State office use)

Approved by

Original Signed: Stephen Mason

Title

Date

MAY 14 2010

Conditions of approval, if any:

NMOCD



EXPLORATION & PRODUCTION

## COMMINGLING PROCEDURE

**ROSA #30B**  
**T31N, R6W, SECT. 12**  
**ELEVATION: 6486' GR**  
**PBTD: 8174' MD**

### WELLBORE STATUS:

MV 2-1/16", 3.3 #/FT EUE, To 5975' MD

DK 2-1/16", 3.3 #/FT EUE, To 8110' MD

5-1/2" BAKER MODEL D PACKER @ 6250' MD

### OBJECTIVE: Commingle MV and DK

1. Pull Mesa Verde tubing
2. Pull Dakota tubing
3. Remove Production packer
4. Clean out to PBTD
5. Acid stimulate each formation if needed.
6. Run completion profiler for allocation purposes.
7. Complete with single string 2-3/8" tubing landed @ 8050'.
8. Install plunger lift system.
9. Remove one set of wellhead facilities
10. Return to production as DK/MV comingle

### PRIOR TO PRIMARY JOB

- 1) Test rig anchors.
- 2) Verify location is OK for rig operations.
- 3) Ensure JSA, ECP's and lockout procedures are in place for the flowline and other energized piping or equipment.
- 4) Acquire 8200' of 2-3/8" N-80 or stronger work string.
- 5) Acquire ~8200' of 2-3/8", EUE, 8rd, 4.7 #/ft J-55 tubing.
- 6) Acquire wellhead and convert from dual tubing string to a single, 2-3/8" tubing string.
- 7) Acquire 2-3/8", I.D. Type X or XN type nipple.

- 8) **KCL** on location to treat kill water as needed.

### **SAFETY NOTICE**

PERSONNEL SAFETY IS THE NUMBER ONE JOB.  
NO EXCEPTIONS!!!  
**PLEASE FOLLOW APPROPRIATE WILLIAMS CONTRACTOR  
PROTOCOLS FOR THIS JOB PLAN**

Please see your Williams Business Representative if you have any questions; Contractor protocols can be located in the Williams E&P Contractor Guide

### **PRIMARY JOB**

**Note:** Safety meetings shall be held each morning before work and subsequent "tailgate" safety meetings are to be held during the day when operation objectives shift in nature and intent (i.e. beginning/ending fishing operations, squeeze jobs, rigging down, perforating, etc.) Please ensure these are documented per section 2.2.7 of the Williams E&P Contractor Guide

1. MI and spot equipment to include fluid pumps and tanks.
2. MIRU.
3. ND/NU killing well with KCL water as necessary
4. Test the BOP's to 2500 psig minimum. If they fail, then rebuild and retest. If they cannot pass tests **DO NOT PROCEED** and notify Production Engineer.
5. Pick up on long string (DK) to determine if the long string will pull.
6. If long string will release, then POOH with short string (MV) and proceed to step # 7. If the long string will not release, proceed with sub-steps 6.1 through 6.3 below:
  - 6.1. POOH with short string one or two joints to confirm ability to move.
  - 6.2. Pick up additional joints of 2-1/16" pipe and wash to top of packer at 6250' using heavy air mist. Wash as necessary until returns clean up to approximately ¼ cup of sand in 5 gallons of water returns.
  - 6.3. After returns clean up, POOH with pipe laying down string.
7. Spear or screw in and POOH with 2-1/16" 3.3 #/ft long string (DK) string using straight pull to pull out of Baker Model D packer seal assembly up to 40,000 #'s.
8. POOH with lay down tubing 2-1/16" 3.3# J-55 and seal assembly.
9. NU additional pipe ram for work string or replace pipe ram with annular preventer.
10. Pick up work string.

11. Pick up Baker Model D packer millover & pulling tool, using DC's and assembly as necessary and RIH on work string to mill over Baker Model D packer @ 6250' MD and RIH on work string. If work string not inspected prior to work do not exceed 70% of joint strength of the work string pipe when pulling.
12. Millover and attempt to pluck Baker Model D packer at 6250' MD. If using 4.7 #/ft work string, weight of dry string above packer is 32.6k #s. If using 6.5 #/ft work string, dry string weight will be 41.5k #s. When attempting to pull packer and tail pipe determine work string weight and do not pull more than 70% of joint strength.
13. POOH with packer and lay down work string, tools and packer.
14. RIH w/ work string.
15. Clean out to 8174' PBTD using a bit, scraper, and air unit package. Acid stimulate if needed.
16. TOOH w/ work string.
17. TIH with 2-3/8" production string to 4627' (+/- 150 above top MV perf @ 4777').
18. MIRU slickline
19. TIH w/ gauge ring/dummy assembly w/ to PBTD.
  - 19.1. Ensure slickline unit can run @ 30 to 150 fpm
20. Allow flow to stabilize overnight.
21. RIH w/ completion profiler and log the production intervals per ProTechnics procedures.
22. TIH w/ completion profiler and **record final wellhead pressure.**
23. TIH w/ blanking plug and set a blanking plug in the F-nipple to isolate tubing from well.
24. TOH w/ slick line and bleed tubing pressure down to zero.
25. RD slick line

**Note:** Only use pipe dope on the pins. Do not dope the couplings.

26. RIH w/ tubing and set @ 8050' w/ seat nipple & standing valve, testing tubing to 1000 psi every 900'. Report leaks and replace.

**Note:** This well should be dead and the BOP's shall be closed and locked at the end of daily operations.

27. Ensure tubing is not plugged prior to releasing the rig

28. N/D BOP's and N/U wellhead.

29. Return well to production.

30. R/D, move off location.

31. Return well to production.

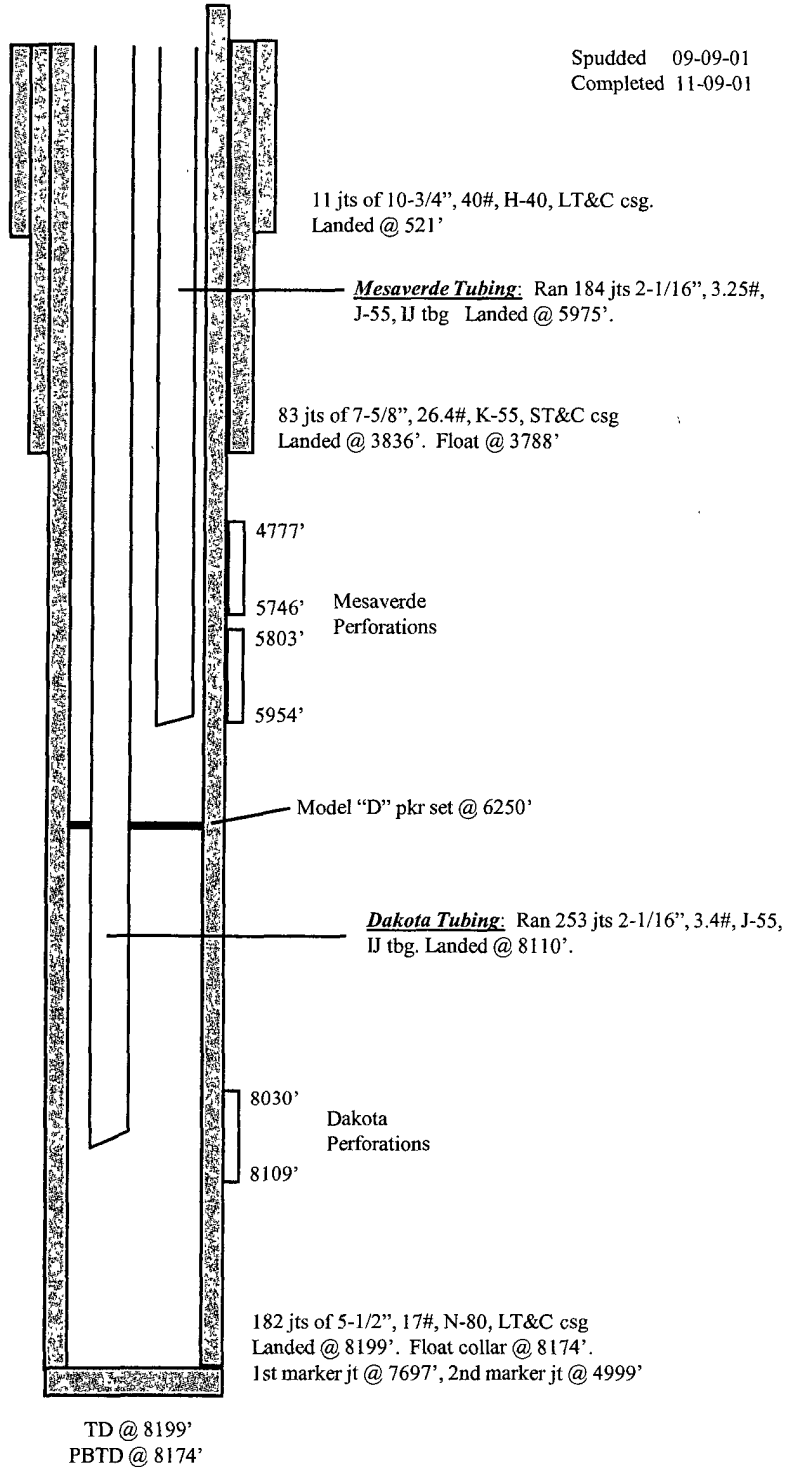
# **ROSA UNIT #30B** **BLANCO MV/BASIN DK**

**Location:** 20' FSL, 2360' FWL  
 SE/4 SW/4 Section 12(N), T31N, R6W  
 Rio Arriba, NM

Spudded 09-09-01  
 Completed 11-09-01

**Elevation:** 6486' GR

<i>Tops</i>	<i>Depth</i>
Kirtland	2673'
Pictured Cliffs	3328'
Cliff House	5545'
Point Lookout	5799'
Mancos	6133'
Dakota	8030'



CliffHouse/Menefee 4777' - 5746' (26, 0.38" holes)  
 80,000# of 20/40 sand in 1889 BBI's slick water

Point Lookout 5803' - 5954' (24, 0.38" holes)  
 80,000# of 20/40 sand in 1897 BBIs slick water

Dakota 8030' - 8109' (21, 0.38" holes)  
 28,000# of 20/40 Acfrac SB Excel resin coated proppant

HOLE SIZE	CASING	CEMENT	CMT TOP
14-3/4"	10-3/4"	415 sx, 585 cu.ft.	488'
9-7/8"	7-5/8"	780 sx, 1459 cu.ft.	3770'
6-3/4"	5-1/2"	275 sx, 551 cu.ft.	3100'