

submitted in lieu of Form 3160-5
**UNITED STATES
 DEPARTMENT OF THE INTERIOR
 BUREAU OF LAND MANAGEMENT**

RECEIVED

APR 08 2010

**Bureau of Land Management
 Farmington Field Office**

Sundry Notices and Reports on Wells

<p>1. Type of Well GAS</p> <p>2. Name of Operator CONOCOPHILLIPS COMPANY</p> <p>3. Address & Phone No. of Operator PO Box 4289, Farmington, NM 87499 (505) 326-9700</p> <p>4. Location of Well, Footage, Sec., T, R, M Surf: Unit D (NWNW), 790' FNL & 1090' FWL, Section 6, T27N, R11W, NMPM</p>	<p>5.</p> <p>6.</p> <p>7.</p> <p>8.</p> <p>9.</p> <p>10.</p> <p>11.</p>	<p>Lease Number SF-078895</p> <p>If Indian, All. or Tribe Name</p> <p>Unit Agreement Name</p> <p>Well Name & Number Holloway Federal 1E</p> <p>API Well No. 30-045-25827</p> <p>Field and Pool Basin DK</p> <p>County and State San Juan Co., NM</p>
---	---	---

12. CHECK APPROPRIATE BOX TO INDICATE NATURE OF NOTICE, REPORT, OTHER DATA

Type of Submission	Type of Action	Other -
<input type="checkbox"/> Notice of Intent	<input type="checkbox"/> Abandonment	<input checked="" type="checkbox"/> Bradenhead Repair
<input checked="" type="checkbox"/> Subsequent Report	<input type="checkbox"/> Recompletion	<input type="checkbox"/> Change of Plans
<input type="checkbox"/> Final Abandonment	<input type="checkbox"/> Plugging	<input type="checkbox"/> New Construction
	<input type="checkbox"/> Casing Repair	<input type="checkbox"/> Non-Routine Fracturing
	<input type="checkbox"/> Altering Casing	<input type="checkbox"/> Water Shut off
		<input type="checkbox"/> Conversion to Injection

RCVD MAY 25 '10
 OIL CONS. DIV.
 DIST. 3

13. Describe Proposed or Completed Operations

Attached is the A+ report to repair BH.

Before and during BH work agencies approvals were needed to proceed. (shown below)

2/19/10 Called BLM/OCD to report during BH repair found holes in csg between 86' - 109'. Both gave permission to squeeze.
 2/23/10 Performed csg inspection log & found csg parted @ 86'. BLM/OCD gave permission to pull csg string.
 2/26/10 Could not get csg to pull so BLM/OCD gave permission to do chem cut @ 105' to 110'.
 3/2/10 Do not have to do chem cut, we were able to pull csg out of hole to 88'. Verbal given by BLM/OCD to run in w/circ port collar, squeeze & circ cmt to surface & squeeze @ 320' (surf shoe).
 3/4/10 2 hr charted MIT to 600psi/30 mins - test good attached.
 3/10/10 Ran CBL & TOC @ 100'. BH has fluctuating pressure, we feel there could be a micro annulus in csg. Called BLM/OCD and they requested we monitor BH by performing a quarterly BH test for a yr and then re-evaluate.

14. I hereby certify that the foregoing is true and correct.

Signed Rhonda Rogers Rhonda Rogers Title Staff Regulatory Technician Date 4/7/10

(This space for Federal or State Office use)

APPROVED BY _____ Title _____ Date _____

CONDITION OF APPROVAL, if any:

Title 18 U S C Section 1001, makes it a crime for any person knowingly and willfully to make any department or agency of the United States any false, fictitious or fraudulent statements or representations as to any matter within its jurisdiction

ACCEPTED FOR RECORD
 MAY 24 2010
 FARMINGTON FIELD OFFICE
 BY T. Salas

NMOCD

pc

A-PLUS WELL SERVICE, INC.

P.O. BOX 1979
Farmington, New Mexico 87499
505-325-2627 * fax: 505-325-1211

ConocoPhillips
Holloway Federal 1E

March 15, 2010
Page 1 of 3

790' FNL & 1090' FWL, Section 6, T-27-N, R-11-W
San Juan County, NM
Lease Number: SF-078895
API #30-045-25827

Bradenhead Repair Report

Notified BLM / NMOCD on 2/12/10

Bradenhead Repair Summary:

- 02/15/10 MOL. Check well pressures: tubing, 400 PSI; casing and bradenhead, 28 PSI. RU slickline. POH with broken piston. TIH with catcher and stack out at 6274'. Set 3" slip ratchet stops at 6874'. RD slickline. RU 3" line to flowback tank. Blow down casing and bradenhead. ND wellhead. NU mud cross and BOP. Install 2.375" sub in donut. Test BOP; 1500 PSI high and 300 PSI low. Test wellhead and secondary seal to 2000 PSI for 30 minutes. PU on tubing and remove donut. SDFD.
- 02/16/10 Open up well and blow down 30 PSI bradenhead pressure. TOH and tally 203 joints 2.375" EUE 4.7# tubing. Total tally: 6400'. Note: 4 joints were crimped with shear ram. Round trip 4.5" casing scraper to 6308'. TOH with tubing and LD scraper. SDFD.
- 02/17/10 Open up well and blow down 40 PSI bradenhead pressure. TIH with 4.5" KOT RBP and packer to 6304' Set RBP at 6304'. Unable to get RBP to hold. Release packer. TOH with tubing and LD packer and RBP. SDFD.
- 02/18/10 Check well pressure: casing, 30 PSI; and bradenhead, 10 PSI. TIH with 3.875" KOT watermelon mill to 6347'. Make up 4.5" KOT RBP and packer. Set RBP at 3200' and packer at 3122'. Test RBP to 600 PSI. PUH with RBP and packer to 6304'. Set RBP at 6304' and packer at 6226'. Test tubing and RBP to 1200 PSI. Load casing with 55 bbls 2% KCl water, total 90 bbls. Attempt to pressure test casing; leak 2 bpm at 500 PSI into holes and out bradenhead. Set packer at 3077'. Isolate casing leaks between 93' and 109'. SDFD.
- 02/22/10 Open up well and blow down 14 PSI bradenhead pressure. Wait on BlueJet. Run casing inspection log from 1900' to surface. RD wireline. Wait on orders. SDFD.
- 02/23/10 Open up well; no pressure, but casing on vacuum. RU BlueJet. Run CBL from RBP at 6304' to surface. RD wireline. Wait on orders. TIH with tubing and retrieving head to 1609'. Wait on air package. Blow well dry with air from 1609'. TIH with retainer head to 3189'. SDFD.
- 02/24/10 Open up well and blow down 10 PSI bradenhead pressure. Blow well dry with air from 3189'. Blow well dry with air from 4772'. Blow well dry with air from 6290'. Clean out sand with air and mist from 6290' to 6304' then release RBP. RU wireline and set 4.5" CIBP at 6304'. TIH with 4.5" KOT packer to 6272'. SDFD.

A-PLUS WELL SERVICE, INC.

P.O. BOX 1979

Farmington, New Mexico 87499

505-325-2627 * fax: 505-325-1211

ConocoPhillips
Holloway Federal 1E

March 15, 2010
Page 2 of 3

Bradenhead Repair Summary - Continued:

- 02/25/10 Open up well; no pressure. Load hole with 92 bbls 2% KCl. Test BP to 600 PSI for 10 minutes. TOH with tubing and LD packer. ND BOP and mud cross with tubing head. Install Weatherford casing spear in 4.5" casing and pull 40,000# on casing. Unable to get slips to move. Pull 55,000# on casing and pull on slips with winch line. Winch line broke at thimble; unable to get slips to move. Release and LD spear. NU tubing and wellhead. SDFD.
- 03/01/10 Open up well and blow down 4 PSI bradenhead pressure. ND tubing head. RU Wireline Specialties. Install spear in casing and pull 35,000# on casing. Rattle shot wellhead and jar casing and slips free. LD 2 joints of 4.5" casing. Have collar looking up. Wait on casing crew and grapple for 4.5" casing collar. PU 2 joints 4.5" casing with 7.313" overshot with 5" grapple. Tag fish at 79'. Wait on impression block. Block shows 4.5" casing collar laying over to one side and heavy scale on top of it. WOO. PU 2 joints 4.5" casing and screw into fish at 79'. Load hole with 1 bbl water. Pressure test casing to 400 PSI. Freepoint casing 110' to surface; 100% free. RD wireline and casing crew. SDFD.
- 03/02/10 Open up well; no pressure. RU Wireline Specialties and San Juan Casing. Back off casing at 79'. POH and LD 2 joints 4.5" casing. Install Baker 4.5" rotating port collar. TIH with 2 joints 4.5", 10.5# casing and screw into casing at 79'. Install slips in casing head. Land 4.5", 10.5# casing with 20,000# on slips. Issue Hot Work Permit. Cut off 4.5" casing. NU tubing head and test to 2000 PSI. NU mud cross and BOP. Open port collar. Establish circulation out bradenhead.
Squeeze #1: mix and pump 32 sxs (37.7 cf) Class B cement and circulate good cement to surface out the bradenhead from 90'. SI bradenhead. Then mix and pump 138 sxs (162.9 cf) Class B cement and squeeze out 4.5" casing with 136.5 sxs at 0 PSI. Close port and leave 1.5 sxs in 4.5" casing. TOC at 60'. SDFD.
- 03/03/10 Open up well; no pressure. Remove valve from bradenhead and found wet cement at surface. WOC. Tally and PU 2 - 3.125" DC with 3.875" tooth bit and tag TOC at 58'. RU drilling equipment. Drill cement from 58' to 61'; found soft cement. Circulate clean. WOO. RD swivel. SDFD.
- 03/04/10 Open up well; no pressure. Break circulation. Drill cement from 61' to 80'; fall through. Check for stringers to 119'. Pressure test casing and chart to 600 PSI for 30 minutes. Bled down to 595'. RD pen recorder. Blow well dry with air from 1750'. Blow well dry with air from 3334'. Blow well dry with air from 4910'. Blow well dry with air from 6286'. Establish circulation with air. Drill out CIBP at 6304'. Tag fill at 6493'. Clean out fill from 6493' to PBTD 6512'. Blow well clean. RD swivel. SDFD.

A-PLUS WELL SERVICE, INC.

P.O. BOX 1979

Farmington, New Mexico 87499

505-325-2627 * fax: 505-325-1211

ConocoPhillips
Holloway Federal 1E

March 15, 2010
Page 3 of 3

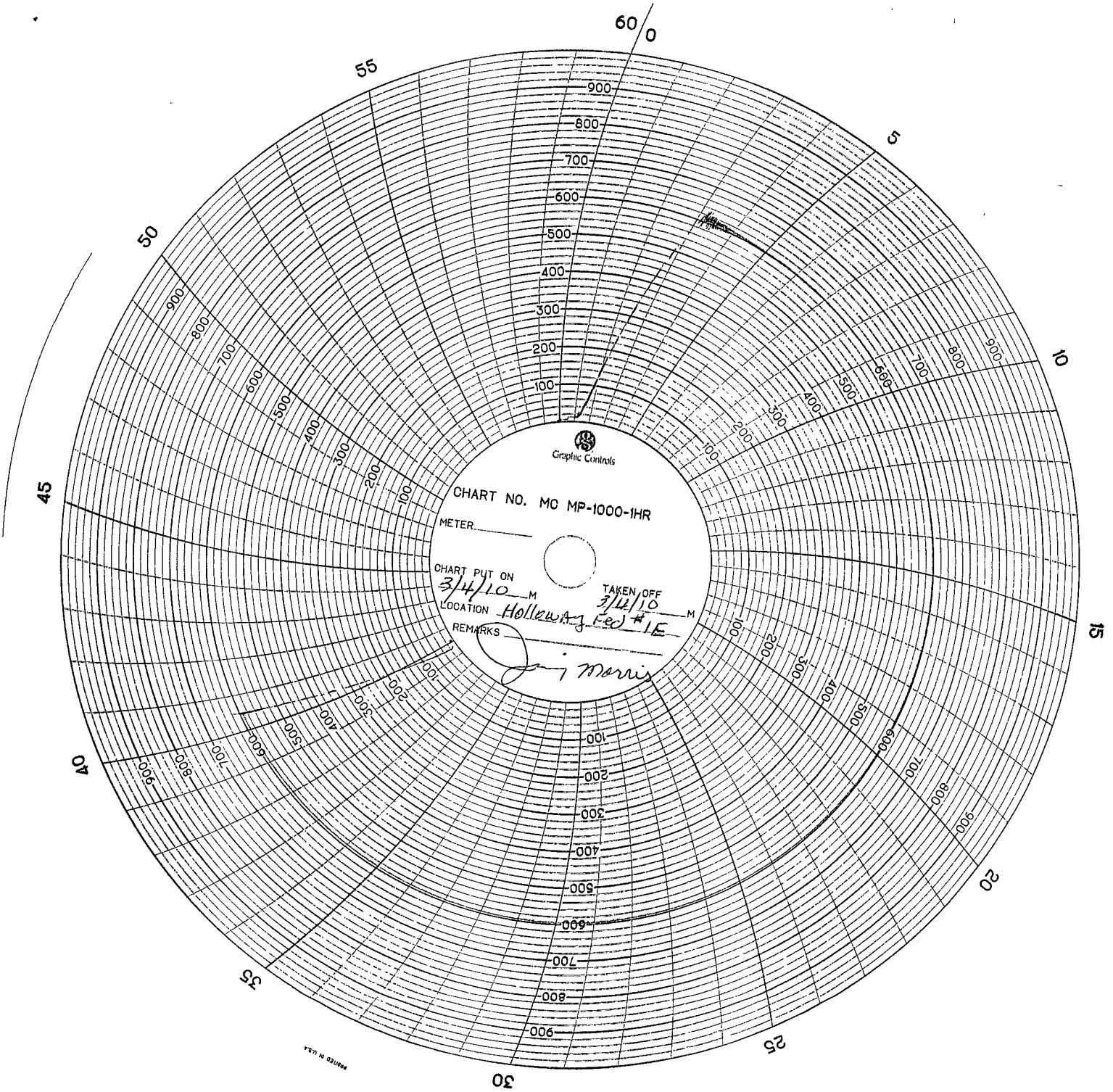
Bradenhead Repair Summary - Continued:

- 03/08/10 Check well pressures: casing, 460 PSI; bradenhead, 4 PSI; and tubing, 0 PSI. Blow well down. Bradenhead did not blow down. Pressured up to 30 PSI after 2 hours. RU Tuboscope. Tuboscope inspected tubing; LD 28 bad joints of yellow band out of 218 joints. POH with tubing and 3.125" drill collars. SDFD.
- 03/09/10 Check well pressures: casing 420 PSI with light puff on bradenhead. TIH with 4.5" KOT RBP and set at 924'. Pressure test casing and RBP to 500 PSI. Run CBL under 500 PSI from 914' to surface. Blow well dry with air from 920'. Release RBP at 924'. Blow well down. Broach 2.375" EUE 4.7# tubing with 1.901" broach to 2600'. SDFD.
- 03/10/10 Check well pressures: casing 420 PSI with 4 PSI on bradenhead. Blow well with air from 2600'. TIH while broaching tubing. Tag fill at 6502'. Blow well dry with air from 6502'. Clean out fill to 6512'. Blow well with air. TIH and tag at 6512'; no fill. Blow well with air from 6512'. Blow down 34 PSI on bradenhead. SDFD.
- 03/11/10 Check well pressures: casing, 400 PSI; bradenhead, 27 PSI; and tubing 0 PSI. Wait on NMOCD to witness PSI before blowing down well. No representative showed up. Kelly Roberts, NMOCD representative, verbally approved to blow down bradenhead. Blow down bradenhead pressure 27 PSI and casing 400 PSI. Wait 15 minutes; casing 420 PSI. SI bradenhead and monitor for 5 minutes. Bradenhead 2 PSI and casing 425 PSI. WOO from NMOCD. Will vent bradenhead. Blow down casing to 420 PSI and bradenhead 17 PSI. TIH and tag at 6512'; no fill. Blow well with air. Land 2.375" EUE, 4.7# tubing at 6429' KB. SN at 6428' KB. Total 206 joints with SN and expendable check. ND BOP and mud cross. NU wellhead. Pump 3 bbls 2% KCl down the tubing and drop ball. Pump air and test tubing to 1000 PSI; OK. Pump off expendable check at 1200 PSI. Blow well dry. SDFD.
- 03/12/10 Check well pressures: casing and tubing, 400 PSI; bradenhead left open to vent. RD daylight pulling unit. SI well. RD flowback lines. NU production lines on wellhead. Clean and secure location. MOL.

Jimmy Morris, MVCI representative, was on location.

Leroy Serrano, ConocoPhillips representative, was on location on 3/1/10.

Kelly Kolb, ConocoPhillips representative, was on location on 3/2/10.



Graphic Controls

CHART NO. MC MP-1000-IHR

METER _____

CHART PUT ON

3/4/10 M

TAKEN OFF

3/4/10 M

LOCATION

Holloway Fed #1E

REMARKS

J. Morris

PRINTED IN U.S.A.