

DISTRICT I
1625 N. French Dr., Hobbs, N.M. 88240

State of New Mexico
Energy, Minerals & Natural Resources Department

Form C-102
Revised October 12, 2005

DISTRICT II
1301 W. Grand Avenue, Artesia, N.M. 88210

DISTRICT III
1000 Rio Brazos Rd., Aztec, N.M. 87410

DISTRICT IV
1220 S. St. Francis Dr., Santa Fe, NM 87505

OIL CONSERVATION DIVISION
1220 South St. Francis Dr.
Santa Fe, NM 87505

Submit to Appropriate District Office
State Lease - 4 Copies
Fee Lease - 3 Copies

☐ AMENDED REPORT

7505 "AS DRILLED PLAT"
WELL LOCATION AND ACREAGE DEDICATION PLAT

¹ API Number 30-039-30805	² Pool Code 71599 / 72319	³ Pool Name BASIN DAKOTA/BLANCO MESAVERDE
⁴ Property Code 7462	⁵ Property Name SAN JUAN 28-6 UNIT	⁶ Well Number 143 P
⁷ GRID No. 14538	⁸ Operator Name BURLINGTON RESOURCES OIL & GAS COMPANY LP	⁹ Elevation 6579'

¹⁰ Surface Location

UL or lot no.	Section	Township	Range	Lot 1dn	Feet from the	North/South line	Feet from the	East/West line	County
K	20	28N	6W		1473'	SOUTH	1570'	WEST	RIO ARRIBA

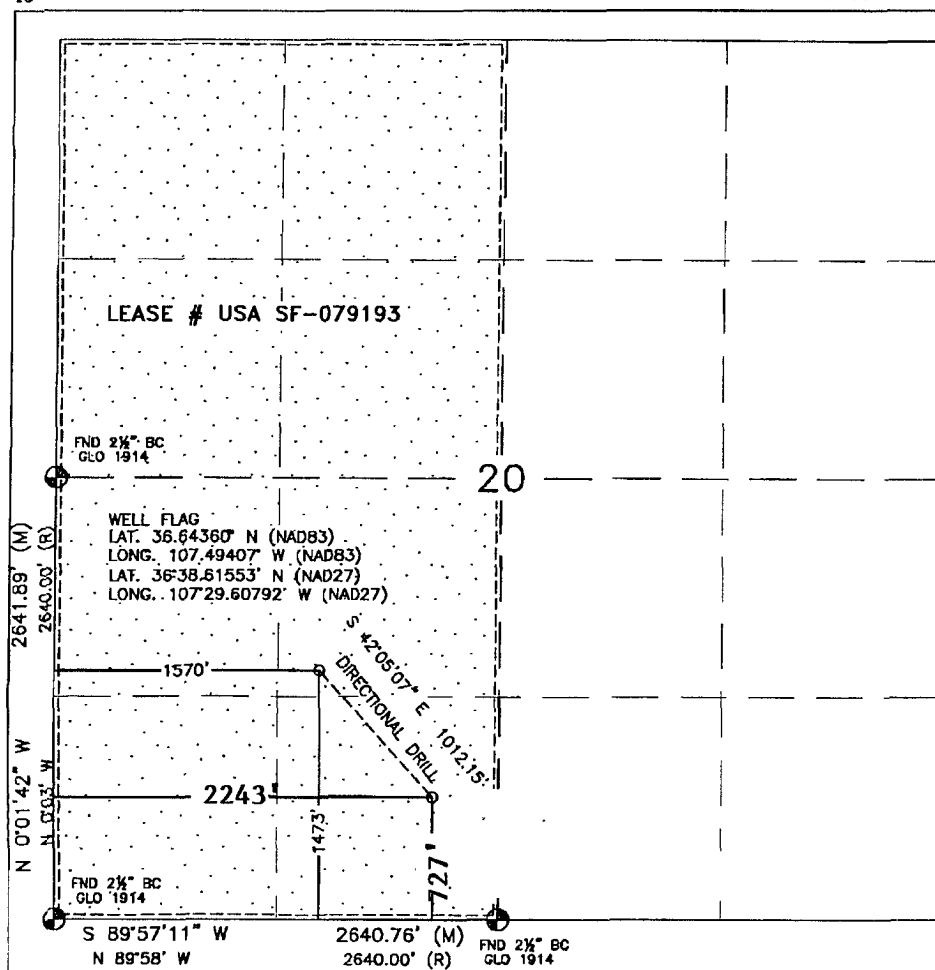
¹¹ Bottom Hole Location If Different From Surface

UL or lot no. N	Section 20	Township 28N	Range 6W	Lot Idn	Feet from the 727	North/South line SOUTH	Feet from the 2243	East/West line WEST	County RIO ARRIBA
²² Dedicated Acres 320.0 Acres - (W/2)			²³ Joint or Infill		²⁴ Consolidation Code		²⁵ Order No.		

RCVD AUG 5 '10
 OIL CONS. DIV.

NO ALLOWABLE WILL BE ASSIGNED TO THIS COMPLETION UNTIL ALL INTERESTS HAVE BEEN CONSOLIDATED
OR A NON-STANDARD UNIT HAS BEEN APPROVED BY THE DIVISION DIST 3

16



17 OPERATOR CERTIFICATION

I hereby certify that the information contained herein is true and complete to the best of my knowledge and belief, and that this organization either owns a working interest or unleased mineral interest in the land including the proposed bottom hole location or has a right to drill this well at this location pursuant to a contract with an owner or a compulsory pooling order heretofore entered by the division.

Signature Crystal Tapaya Date 7/22/10

Crystal Tafoya 7/22/10
Printed Name

18 SURVEYOR CERTIFICATION

I hereby certify that the well location shown on this plat was plotted from field notes of actual surveys made by me or under my supervision, and that the same is true and correct to the best of my belief.

FEBRUARY 12, 2009

Date of Survey _____

Signature and Seal of Professional Surveyor:

Chas Russell



DAVID RUSSELL

Certificate Number 10201