

UNITED STATES
DEPARTMENT OF THE INTERIOR
BUREAU OF LAND MANAGEMENT

SUBMIT IN
DUPLICATE

(See other instructions on
reverse side)

FORM APPROVED
OMB NO. 1004-0137
Expires: February 28, 1995

WELL COMPLETION OR RECOMPLETION REPORT AND LOG*

RECEIVED

AUG 10 2010

Farmington Field Office
Bureau of Land Management

1a. TYPE OF WELL	<input type="checkbox"/> OIL WELL	<input checked="" type="checkbox"/> GAS WELL	<input type="checkbox"/> DRY	<input type="checkbox"/> OTHER
b. TYPE OF COMPLETION	<input checked="" type="checkbox"/> NEW WELL <input type="checkbox"/> WORKOVER <input type="checkbox"/> DEEPEN <input checked="" type="checkbox"/> PLUG BACK <input type="checkbox"/> DIFF RESVR <input type="checkbox"/> OTHER			
2. NAME OF OPERATOR	WILLIAMS PRODUCTION COMPANY			
3. ADDRESS AND TELEPHONE NO.	P.O. Box 640, Aztec, NM 87410 (505) 634-4208			
4. LOCATION OF WELL (Report location clearly and in accordance with any State requirements)*	At Surface: 2310' FNL & 790' FEL, Sec 21 (H), T28N, R3W At top production interval reported below : Same At total depth: Same			
15. DATE SPUDDED 2/13/10	16. DATE T.D. REACHED 3/12/10	17. DATE COMPLETED (READY TO PRODUCE) 6/22/2010	18. ELEVATIONS (DK, RKB, RT, GR, ETC)* 7042' GR	19. ELEVATION CASINGHEAD
20. TOTAL DEPTH, MD & TVD 8475' MD	21. PLUG, BACK T.D., MD & TVD 8105' MD	22. IF MULTICOMP, HOW MANY 2	23. INTERVALS DRILLED BY	ROTARY TOOLS x
24. PRODUCING INTERVAL(S), OF THIS COMPLETION - TOP, BOTTOM, NAME (MD AND TVD)* Blanco MV 5656' - 6282'				25. WAS DIRECTIONAL SURVEY MADE NO
26. TYPE ELECTRIC AND OTHER LOGS RUN Array Induction, Compensated GR-Density-Neutron				27. WAS WELL CORED NO

CASING SIZE/GRADE	WEIGHT, LB./FT	DEPTH SET (MD)	HOLE SIZE	TOP OF CEMENT, CEMENTING RECORD	AMOUNT PULLED
10-3/4", J-55	40.5#	312'	14-3/4"	200 SX - SURFACE	
7-5/8", K-55	26.4#	4143'	9-7/8"	635 SX - 300'	
4.5", N-80	11 6#	8469'	6-3/4"	500 SX - 2550' TOC	

29 LINER RECORD				30 TUBING RECORD			
SIZE	TOP (MD)	BOTTOM (MD)	SACKS CEMENT*	SCREEN (MD)	SIZE	DEPTH SET (MD)	PACKER SET (MD)
					2 3/8" 4.7# N-80	6242'	

31 PERFORATION RECORD (Interval, size, and number)		32 ACID, SHOT, FRACTURE, CEMENT SQUEEZE, ETC	
		DEPTH INTERVAL (MD)	AMOUNT AND KIND OF MATERIAL USED
Upper MV: 38, 0.34" holes		5656' - 5923'	Frac w/ 80,000# 20/40 PR w/SWNT
Lower MV: 58, 0.34" holes		5975' - 6282'	Frac w/ 80,000# 20/40 PR w/SWNT

RCVD AUG 16 '10
OIL CONS. DIV.
DIST. 3

33 PRODUCTION		DATE OF FIRST PRODUCTION 6/8/2010				PRODUCTION METHOD (Flowing, gas lift, pumping-size and type of pump) Flowing		WELL STATUS (PRODUCING OR SI) Producing	
DATE OF TEST	TESTED	CHOKE SIZE	PROD'N FOR TEST PERIOD	OIL - BBL.	GAS - MCF	WATER - BBL.	GAS-OIL RATIO		
FLOW TBG PRESS	CASING PRESSURE	CALCULATED 24-HOUR RATE		OIL - BBL	GAS - MCF	WATER - BBL	GAS-OIL RATIO		
34 DISPOSITION OF GAS (Sold, used for fuel, vented, etc) TO BE SOLD						TEST WITNESSED BY.			

35. LIST OF ATTACHMENTS	SUMMARY OF POROUS ZONES, WELLBORE DIAGRAM	FARMINGTON FIELD OFFICE BY <u>SCU</u>	
-------------------------	---	--	--

SIGNED Walter P. King TITLE Regulatory Specialist DATE 8/9/2010

NMOCD

37 SUMMARY OF POROUS ZONES (Show all important zones of porosity and contents thereof, cored intervals, and all drill-stem, tests, including depth interval tested, cushion used, time tool open, flowing and shut-in pressures, and recoveries)					38 GEOLOGIC MARKERS			
FORMATION	TOP	BOTTOM	DESCRIPTION, CONTENTS, ETC		NAME	TOP		
						NAME	MEASURED DEPTH	TRUE VERTICAL DEPTH
						LEWIS	3928'	
						CLIFFHOUSE	5649'	
						POINT LOOKOUT	5971'	
						MANCOS	6403'	
						GRENEROS	8028'	
						DAKOTA	8153'	

In Lieu of
Form 3160-4
(July 1992)

UNITED STATES
DEPARTMENT OF THE INTERIOR
BUREAU OF LAND MANAGEMENT

SUBMIT IN
DUPLICATE

(See other instructions on
reverse side)

FORM APPROVED
OMB NO. 1004-0137
Expires: February 28, 1995

WELL COMPLETION OR RECOMPLETION REPORT AND LOG*

RECEIVED

AUG 16 2010

Farmington Field Office
Bureau of Land Management

1a. TYPE OF WELL ☐ OIL WELL ☒ GAS WELL ☐ DRY ☐ OTHER

b. TYPE OF COMPLETION:
☒ NEW WELL ☐ WORKOVER ☐ DEEPEN ☒ X PLUG BACK ☐ DIFF.RESVR. ☐ OTHER

2 NAME OF OPERATOR
WILLIAMS PRODUCTION COMPANY

3 ADDRESS AND TELEPHONE NO.
P.O. Box 640, Aztec, NM 87410 (505) 634-4208

4. LOCATION OF WELL (Report location clearly and in accordance with any State requirements)*

At Surface: 2310' FNL & 790' FEL, Sec 21 (H), T28N, R3W

At top production interval reported below : Same

At total depth: Same

8 FARM OR LEASE NAME, WELL NO.

JAECO-WPX 28-3 21 #001

9. API WELL NO.

30-039-30595-0002

10. FIELD AND POOL, OR WILDCAT
BASIN MC

11. SEC., T., R., M., OR BLOCK AND
SURVEY OR AREA
Sec 21, T28N, R3W

12. COUNTY OR

Rio Arriba

13. STATE

New Mexico

15. DATE
SPUDDED
2/13/10

16. DATE T.D.
REACHED
3/12/10

17. DATE COMPLETED (READY TO PRODUCE)
6/22/2010

14. PERMIT NO.

DATE ISSUED

18. ELEVATIONS (DK, RKB, RT, GR, ETC)*
7042' GR

19. ELEVATION CASINGHEAD

20. TOTAL DEPTH, MD & TVD
8475' MD

21. PLUG, BACK T.D., MD & TVD
8105' MD

22. IF MULTICOMP.,
HOW MANY
2

23. INTERVALS
DRILLED BY

ROTARY TOOLS
x

CABLE TOOLS

24. PRODUCING INTERVAL(S), OF THIS COMPLETION - TOP, BOTTOM, NAME (MD AND TVD)*

Basin MC 7054' - 7494' The MC production is shut in pending commingle authorization.

25. WAS DIRECTIONAL SURVEY MADE

NO

26. TYPE ELECTRIC AND OTHER LOGS RUN

Array Induction, Compensated GR-Density-Neutron

27. WAS WELL CORED

NO

28. CASING REPORT (Report all strings set in well)

CASING SIZE/GRADE.	WEIGHT, LB/FT	DEPTH SET (MD)	HOLE SIZE	TOP OF CEMENT, CEMENTING RECORD	AMOUNT PULLED
10-3/4", J-55	40.5#	312'	14-3/4"	200 SX - SURFACE	
7-5/8", K-55	26.4#	4143'	9-7/8"	635 SX - 300'	
4.5", N-80	11.6#	8469'	6-3/4"	500 SX - 2550' TOC	

29. LINER RECORD

SIZE	TOP (MD)	BOTTOM (MD)	SACKS CEMENT*	SCREEN (MD)	SIZE	DEPTH SET (MD)	PACKER SET (MD)
					2 3/8" 4.7# N-80	6242'	

31. PERFORATION RECORD (Interval, size, and number)

Upper MC: 93, 0.34" holes

Lower MC: 78, 0.34" holes

32. ACID, SHOT, FRACTURE, CEMENT SQUEEZE, ETC

DEPTH INTERVAL
(MD)

AMOUNT AND KIND OF MATERIAL USED

7054' - 7274'

Frac w/ 5000# 100 mesh BASF sand followed with 130,600# of 40/70 BASF sand

7306' - 7494'

Frac w/ 5000# 100 mesh BASF sand followed with 113,400# of 40/70 BASF sand

RCVD AUG 16 '10

OIL CONS. DIV.

33. PRODUCTION

DIST. 3

DATE OF FIRST PRODUCTION		PRODUCTION METHOD (Flowing, gas lift, pumping-size and type of pump)				WELL STATUS (PRODUCING OR SHUT IN)	
4/29/2010		flowing				Shut In	
DATE OF TEST	TESTED	CHOKE SIZE	PROD'N FOR TEST PERIOD	OIL - BBL.	GAS - MCF	WATER - BBL.	GAS-OIL RATIO
FLOW TBG PRESS	CASING PRESSURE	CALCULATED 24-HOUR RATE		OIL - BBL.	GAS - MCF	WATER - BBL.	OIL GRAVITY-API (CORR.)

34. DISPOSITION OF GAS (Sold, used for fuel, vented, etc.): TO BE SOLD

35. LIST OF ATTACHMENTS: SUMMARY OF POROUS ZONES, WELLBORE DIAGRAM

36 I hereby certify that the foregoing and attached information is complete and correct as determined from all available records

SIGNED Nathan Reese TITLE Regulatory Specialist DATE 8/9/2010

NMOCD

ACCEPTED FOR RECORD
AUG 13 2010
FARMINGTON FIELD OFFICE
BY SCV
TEST WITNESSED BY.

37 SUMMARY OF POROUS ZONES. (Show all important zones of porosity and contents thereof, cored intervals, and all drill-stem, tests, including depth interval tested, cushion used, time tool open, flowing and shut-in pressures, and recoveries).					38 GEOLOGIC MARKERS			
FORMATION	TOP	BOTTOM	DESCRIPTION, CONTENTS, ETC		NAME	TOP		
						NAME	MEASURED DEPTH	TRUE VERTICAL DEPTH
						LEWIS	3928'	
						CLIFFHOUSE	5649'	
						POINT LOOKOUT	5971'	
						MANCOS	6403'	
						GRENEROS	8028'	
						DAKOTA	8153'	

JAECO-WPX 28-3 21 #001
Blanco MV, Basin MC, Basin DK

Spud Date: 2/13/2010

Location:
 2310' FNL & 790' FEL
 ALL Section 21(H), T28N, R3W
 Rio Arriba, NM

Elevation: 7042' GR
API #: 30-039-30595

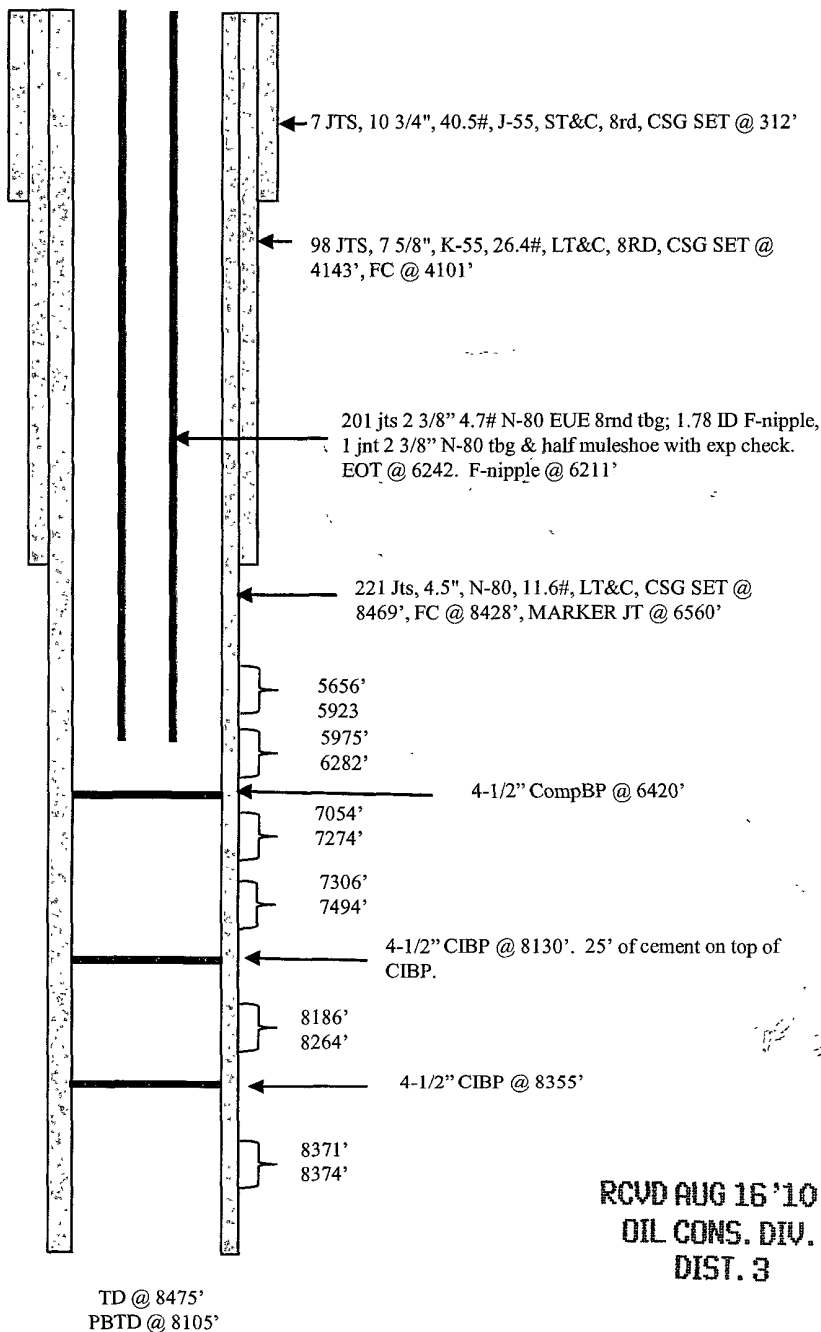
<u>Tops</u>	<u>Depth</u>
Lewis	3928'
Cliff House	5649'
Point Lookout	5971'
Mancos	6403'
Greneros	8028'
Dakota	8153'

Mesaverde 2nd: 5656'-5923' (38, 0.34" holes)
 Frac with 80,000# 20/40 PR w/SWNT
Mesaverde 1st: 5975'-6282' (58, 0.34" holes)
 Frac with 80,000# 20/40 PR w/SWNT

Mancos 2nd: 7054' - 7274' (93, 0.34" holes)
 Frac with 5000# 100 mesh BASF followed
 w/130,600# 40/70 mesh BASF
Mancos 1st: 7306' - 7494' (78, 0.34" holes)
 Frac with 5000# 100 mesh BASF followed
 w/113,400# 40/70 mesh BASF

DK 8186'-8264' (60, 0.34" holes)
 Frac w/ 5000# 100 mesh Ottawa sand followed
 with 94,100 40/70 Ottawa sand

Lower DK: 8371' - 8374' (12, 0.34" holes)
 These holes not fraced



RCVD AUG 16 '10
OIL CONS. DIV.
DIST. 3

HOLE SIZE	CASING	CEMENT	CU. FT.	CMT TOP
14-3/4"	10 3/4", 40.5#	200 sxs	360 cu.ft.	surface
9 7/8"	7", 26.4#	635 sxs	1579 cu.ft.	300
6 3/4"	4-1/2", 11.6#	500 sxs	700 cu.ft.	2550' (CBL)

Ar