

**UNITED STATES  
DEPARTMENT OF THE INTERIOR  
BUREAU OF LAND MANAGEMENT**

Sundry Notices and Reports on Wells

1. Type of Well  
GAS

2. Name of Operator

**BURLINGTON**

RESOURCES OIL & GAS COMPANY LP Farmington Field Office  
Bureau of Land Management

3. Address & Phone No. of Operator

PO Box 4289, Farmington, NM 87499 (505) 326-9700

4. Location of Well, Footage, Sec., T, R, M

Unit N (SESW), 990' FSL & 990' FWL, Section 30, T30N, R8W, NMPM

5. Lease Number  
NMNM-012708

6. If Indian, All. or  
Tribe Name

7. Unit Agreement Name

8. Well Name & Number  
Howell M 1

9. API Well No.

30-045-09101

10. Field and Pool  
Blanco MV / Basin FC/Blanco PC

11. County and State  
San Juan, NM

**12. CHECK APPROPRIATE BOX TO INDICATE NATURE OF NOTICE, REPORT, OTHER DATA**

Type of Submission

☒ Notice of Intent

☐ Subsequent Report

☐ Final Abandonment

Type of Action

☐ Abandonment

☒ Recompletion

☐ Plugging

☐ Casing Repair

☐ Altering Casing

☐ Change of Plans

☐ New Construction

☐ Non-Routine Fracturing

☐ Water Shut off

☐ Conversion to Injection

Other - \_\_\_\_\_

**13. Describe Proposed or Completed Operations**

Burlington Resources requests permission to recompleat the Fruitland Coal and Pictured Cliff formations for the subject well. A C107A will be submitted to commingle the Blanco Mesaverde, Basin Fruitland Coal and Blanco Pictured Cliffs. The proposed procedure, current wellbore schematic and plat are attached.

RCVD SEP 30 '10  
OIL CONS. DIV.

DIST. 3

**14. I hereby certify that the foregoing is true and correct.**

Signed Crystal Tafuya Crystal Tafuya

Title: Staff Regulatory Technician

Date 9/24/2010

(This space for Federal or State Office use)

APPROVED BY Original Signed: Stephen Mason Title \_\_\_\_\_

CONDITION OF APPROVAL, if any:

Title 18 U.S.C. Section 1001, makes it a crime for any person knowingly and willfully to make any department or agency of the United States any false, fictitious or fraudulent statements or representations as to any matter within its jurisdiction.

Date SEP 27 2010

NMOCB

## Howell M #1

Unit M, Section 30, Township 30N, Range 08W

API#: 3004509101

### **Fruitland Coal / Pictured Cliffs Pay-Add Recompletion Sundry**

**10/27/2009**

#### **Procedure:**

1. MIRU service rig. TOOH with current production tubing string.
2. Wireline set a 4-1/2" composite bridge plug @ 2805' (~50' below liner top @ 2755').
3. TIH with packer and set ~50' below bottom squeeze hole @ 1465' (set @ 1515'). Pressure test below packer to maximum treating pressure of 2800 psig (75% of Burst for 7", 20.0#, J-55 casing). Pressure test backside to 600 psig for 30 minutes. TOOH with packer.
4. Perforate the Pictured Cliffs. TIH with frac string.
5. Fracture stimulate the Pictured Cliffs.
6. Flow back PC frac on clean-up to a steel pit at least overnight. TOH with frac string.
7. RIH with 7" RBP on wireline and set @ 2420'.
8. Perforate the Fruitland Coal. TIH with frac string.
9. Fracture stimulate the Fruitland Coal.
10. Flow back FRC frac on clean-up to a steel pit. TOH with frac string.
11. TIH and clean out FRC. Establish stable flow rate and acquire pressure data.
12. POOH with RBP between PC and FC and clean out to CBP @ 2805'. Flow test comingled Fruitland Coal / Pictured Cliffs production.
13. Drill out last CBP @ 2805'. Clean out to PBTD@ 4820'. TOOH.
14. TIH and land production tubing. Flow test entire wellbore.
15. Release service rig and turn over to production.

## Current Wellbore Diagram

## CURRENT SCHEMATIC

# ConocoPhillips

HOWELL M #1

District NORTH		Field Name	API / UWI	County	State/Province
		BLANCO MESAVERDE (PRORATED GAS)	3004509101	SAN JUAN	NEW MEXICO
Original	Spud Date	Surface Legal Location		E/W Dist (ft)	E/W Ref
				N/S Dist (ft)	N/S Ref
Well: Config - Sidetrack 1, 10/27/2009 8:30:00 AM					
ftKB (MD)	ftKB (TVD)	Schematic - Actual			Frm Final
0		Surface Casing Cement, 10-173, 5/5/1953, CMT WITH 125 SKS QUICKSET CEMENT, CIRC TO SURFACE			
10		Surface, 9 5/8in, 9.001in, 10 ftKB, SPIRAL WELD CSG, 173 ftKB			
172		SINGLE STAGE, 10-500, 10/7/2002, PUMPED 240 SKS CLASS B NEAT CEMENT, CIRC 9 BBLS CMT TO SURFACE			
173		SQUEEZE, 500, 10/7/2002			
180		SQUEEZE, 1,465, 8/24/1967			
500		Cement Squeeze, 500-2,320; 8/24/1967, SQUEEZE THROUGH PERFS W/125 SKS CLASS A CMT, GOOD CIRC. IN 2002 CUT 4-1/2" CASING AND RAN CBL, TOC @500			KIRTLAND, 1,464
1,464		Intermediate Casing Cement, 500-4,022, 5/13/1953, CMT WITH 300 SKS REG CEMENT & 2 SKS FLOCELE. TOC @2320'			
1,465		BY TEMP SURVEY. CBL RAN 10/4/02 TOC @500'			FRUITLAND, 2,075
2,075		Intermediate, 7in, 6.456in, 10 ftKB, 4,022 ftKB			PICTURED CLIFFS, 2,450
2,450		Cliff House, 4,150-4,200, 8/29/1967			
2,755		Pl Lookout, 4,646-4,788, 8/29/1967			
4,021		Production Casing Cement, 3,350-4,819, 8/28/1967, CMT WITH 115 SKS CLASS A CEMENT. TOC @3475' BY TEMP SURVEY. 10/4/02 RAN CBL FOR TOC TO DETERMINE WHERE TO CUT CSG. CBL TOC @3350'			CLIFF HOUSE, 4,038
4,022		Cement plug, 4,803-4,819, 8/28/1967, PBTD			
4,038		Production, 4 1/2in, 2,755 ftKB, SIDETRACK PROD CSG. IN 2002			MENEFFEE, 4,225
4,050		FREEPOINT CSG, CUT @2755', TOOH W/86 JTS, 4,819 ftKB			POINT LOOKOUT, 4,646
4,150		Cement Plug, 4,819-4,820, 8/28/1967			
4,200		Cement Squeeze, 4,050-4,830, 8/24/1967, SQUEEZED OPEN HOLE W/200 SKS CLASS A CEMENT. KO SIDETRACK AT 4050'			
4,225					
4,646					
4,647					
4,653					
4,684					
4,685					
4,686					
4,726					MANCOS, 4,726
4,788					
4,803					
4,803					
4,805					
4,818					
4,819					
4,820					

## District I

1625 N. French Dr., Hobbs, NM 88240

## District II

1301 W. Grand Avenue, Artesia, NM 88210

## District III

1000 Rio Brazos Rd., Aztec, NM 87410

## District IV

1220 S. St. Francis Dr., Santa Fe, NM 87505

State of New Mexico  
Energy, Minerals & Natural Resources Department  
OIL CONSERVATION DIVISION  
1220 South St. Francis Dr.  
Santa Fe, NM 87505

Form C-102  
Revised July 16, 2010  
Submit to Appropriate  
District Office

☐ AMENDED REPORT

## WELL LOCATION AND ACREAGE DEDICATION PLAT

<sup>1</sup> API Number 30-045-09101		<sup>2</sup> Pool Code 71629 / 72359		<sup>3</sup> Pool Name BASIN FRUITLAND COAL / BLANCO PICTURED CLIFFS	
<sup>4</sup> Property Code 7132		<sup>5</sup> Property Name HOWELL M			<sup>6</sup> Well Number 1
<sup>7</sup> OGRID No. 14538		<sup>8</sup> Operator Name BURLINGTON RESOURCES OIL & GAS COMPANY LP			<sup>9</sup> Elevation 5763

<sup>10</sup> SURFACE LOCATION

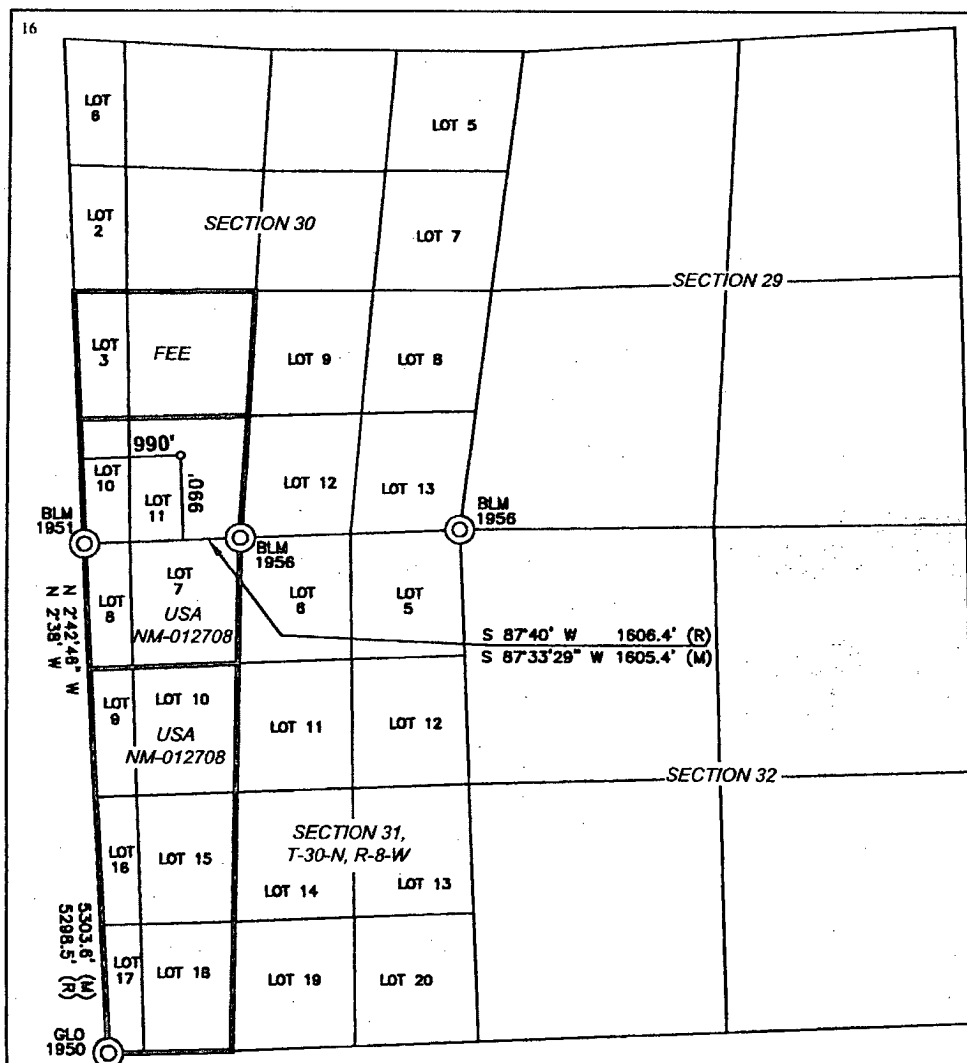
UL or lot no.	Section	Township	Range	Lot Idn	Feet from the	North/South line	Feet from the	East/West line	County
N	30	30-N	8-W	11	990	SOUTH	990	WEST	SAN JUAN

<sup>11</sup> Bottom Hole Location If Different From Surface

UL or lot no.	Section	Township	Range	Lot Idn	Feet from the	North/South line	Feet from the	East/West line	County

<sup>12</sup> Dedicated Acres * FC - 282.54 ** PC - 154.19	<sup>13</sup> Joint or Infill	<sup>14</sup> Consolidation Code	<sup>15</sup> Order No. *R-8943 FC dedication - Lots 3,10,11, NESW (Section 30), Lots 7-10, 15-18, (Section 31) **R-3669 PC dedication - Lots 3,10,11, NESW (Section 30), Lots 7 & 8, (Section 31)
--	-------------------------------	----------------------------------	--

NO ALLOWABLE WILL BE ASSIGNED TO THIS COMPLETION UNTIL ALL INTERESTS HAVE BEEN  
CONSOLIDATED OR A NON-STANDARD UNIT HAS BEEN APPROVED BY THE DIVISION

<sup>17</sup> OPERATOR CERTIFICATION

I hereby certify that the information contained herein is true and complete to the best of my knowledge and belief, and that this organization either owns a working interest or unleased mineral interest in the land including the proposed bottom hole location or has a right to drill this well at this location pursuant to a contract with an owner of such a mineral or working interest, or to a voluntary pooling agreement or a compulsory pooling order heretofore entered by the division.

*Patsy Clugston* 9/7/10  
Signature Date

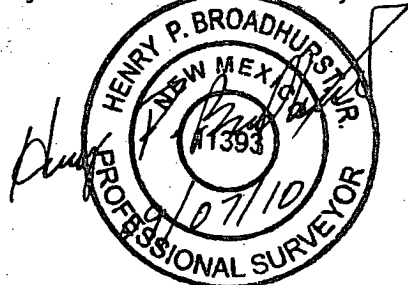
Patsy Clugston  
Printed Name

Patsy.L.Clugston@conocophillips.com  
E-mail Address

<sup>18</sup> SURVEYOR CERTIFICATION

I hereby certify that the well location shown on this plat was plotted from field notes of actual surveys made by me or under my supervision, and that the same is true and correct to the best of my belief.

Date of Survey:  
Signature and Seal of Professional Surveyor:



Certificate Number: NM 11393