

UNITED STATES
DEPARTMENT OF THE INTERIOR
BUREAU OF LAND MANAGEMENT

RECEIVED

SEP 14 2010

APPLICATION FOR PERMIT TO DRILL, DEEPEN, OR PLUG BACK

Farmington Field Office
Bureau of Land Management

1a. Type of Work DRILL	5. Lease Number SF-078740 Unit Reporting Number NMNM-78419A-MV	
1b. Type of Well GAS	6. If Indian, All. or Tribe	
2. Operator ConocoPhillips Company	7. Unit Agreement Name San Juan 30-5 Unit	
3. Address & Phone No. of Operator PO Box 4289, Farmington, NM 87499 (505) 326-9700	8. Farm or Lease Name 9. Well Number 105 RCVD OCT 12 '10 OIL CONS. DIV. DIST. 3	
4. Location of Well Surf: Unit G (SWNE), 1385' FNL & 1975' FEL Surf: Latitude: 36.787062° N (NAD83) Longitude: 107.396438° W	10. Field, Pool, Wildcat Blanco MV / Basin DK 11. Sec., Twn, Rge, Mer. (NMPM) Unit G, Sec. 30, T30N, R5W API # 30-039- 30994	
14. Distance in Miles from Nearest Town 48.2 miles from Blanco, NM	12. County Rio Arriba	13. State NM
15. Distance from Proposed Location to Nearest Property or Lease Line 1385'	17. Acres Assigned to Well 320.00 E/2 (MV/DK)	
16. Acres in Lease 2560.00	20. Rotary or Cable Tools Rotary	
18. Distance from Proposed Location to Nearest Well, Drlg, Compl, or Applied for on this Lease 831' from SJ 30-5 Unit 209 (FC)	22. Approx. Date Work will Start DRILLING OPERATIONS AUTHORIZED ARE SUBJECT TO COMPLIANCE WITH ATTACHED "GENERAL REQUIREMENTS".	
19. Proposed Depth 7682' <small>This action is subject to technical and procedural review pursuant to 43 CFR 3165.3 and appeal pursuant to 43 CFR 3165.4</small>	24. Authorized by: <u>Dollie L. Busse</u> Dollie L. Busse (Staff Regulatory Tech)	
21. Elevations (DF, FT, GR, Etc.) 6252' GL	Date <u>8/27/10</u>	
23. Proposed Casing and Cementing Program See Operations Plan attached		

PERMIT NO.

APPROVAL DATE

APPROVED BY

TITLE

DATE

Archaeological Report attached

Threatened and Endangered Species Report attached

NOTE: This format is issued in lieu of U.S. BLM Form 3160-3

Title 18 U.S.C. Section 1001, makes it a crime for any person knowingly and willfully to make to any department or agency of the United States any false, fictitious or fraudulent statements or presentations as to any matter within its jurisdiction.

Example Master Plan Type 3

Bond Numbers ES-0048 and ES-0085

A COMPLETE C-144 MUST BE SUBMITTED TO AND
APPROVED BY THE NMOCD FOR: A PIT, CLOSED
LOOP SYSTEM, BELOW GRADE TANK, OR
PROPOSED ALTERNATIVE METHOD, PURSUANT TO
NMOCD PART 19.15.17, PRIOR TO THE USE OR
CONSTRUCTION OF THE ABOVE APPLICATIONS.

OCT 25 2010

NMOCD

BLM'S APPROVAL OR ACCEPTANCE OF THIS
ACTION DOES NOT RELIEVE THE LESSEE AND
OWNER FROM OBTAINING ANY OTHER
AUTHORIZATION REQUIRED FOR OPERATIONS
ON FEDERAL AND INDIAN LANDS

DISTRICT I
1625 N. French Dr., Hobbs, N.M. 88240

DISTRICT II
1301 West Grand Avenue, Artesia, N.M. 88210

DISTRICT III
1000 Rio Brazos Rd., Aztec, N.M. 87410

DISTRICT IV
1220 S. St. Francis Dr., Santa Fe, NM 87505

State of New Mexico
Energy, Minerals & Natural Resources Department

OIL CONSERVATION DIVISION
1220 South St. Francis Dr.
Santa Fe, NM 87505

Form C-102
Revised October 12, 2005

Submit to Appropriate District Office
State Lease - 4 Copies
Fee Lease - 3 Copies

SEP 14 2010

☐ AMENDED REPORT

WELL LOCATION AND ACREAGE DEDICATION REPORT

1 API Number 30-039-30994		2 Pool Code 71599 / 72319		3 Pool Name BASIN DAKOTA/BLANCO MESAVERDE	
4 Property Code 31327		5 Property Name SAN JUAN 30-5 UNIT			6 Well Number 105
7 GRID No. 217817		8 Operator Name CONOCOPHILLIPS COMPANY			9 Elevation 6252'

10 Surface Location

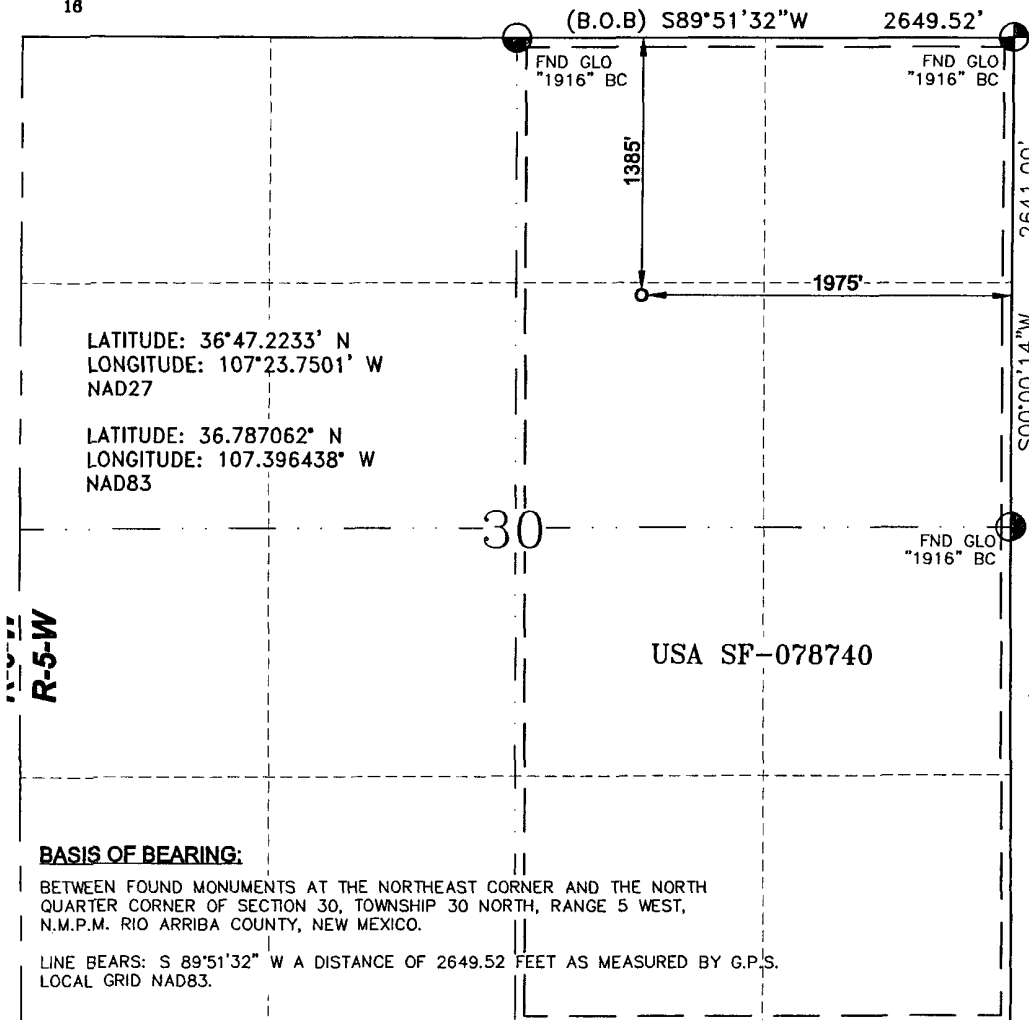
UL or lot no.	Section	Township	Range	Lot Idn	Feet from the	North/South line	Feet from the	East/West line	County
G	30	30-N	5-W		1385	NORTH	1975	EAST	RIO ARriba

11 Bottom Hole Location If Different From Surface

UL or lot no.	Section	Township	Range	Lot Idn	Feet from the	North/South line	Feet from the	East/West line	County
12 Dedicated Acres MV 320.00 ACRES E/2 DK 320.00 ACRES E/2					13 Joint or Infill		14 Consolidation Code		15 Order No.

NO ALLOWABLE WILL BE ASSIGNED TO THIS COMPLETION UNTIL ALL INTERESTS HAVE BEEN CONSOLIDATED
OR A NON-STANDARD UNIT HAS BEEN APPROVED BY THE DIVISION

16



17 OPERATOR CERTIFICATION

I hereby certify that the information contained herein is true and complete to the best of my knowledge and belief, and that this organization either owns a working interest or unleased mineral interest in the land including the proposed bottom hole location or has a right to drill this well at this location pursuant to a contract with an owner of such a mineral or a working interest, or to a voluntary pooling agreement or a compulsory pooling order heretofore entered by the division.

Signature
Dollie L. Busse
Printed Name

18 SURVEYOR CERTIFICATION

I hereby certify that the well location shown on this plat was plotted from field notes of actual surveys made by me or under my supervision, and that the same is true and correct to the best of my belief.

JANUARY 26, 2010

Date of Survey

Signature and Seal of



GLEN W. RUSSELL
Certificate Number

15703

PROJECT PROPOSAL - New Drill / Sidetrack

San Juan Business Unit

SAN JUAN 30-5 UNIT 105

DEVELOPMENT

Lease:		AFE #: WAN.CDR.9364				AFE \$: 0.00	
Field Name: SAN JUAN		Rig: H&P Rig 282		State: NM	County: RIO ARRIBA		API #:
Geologist:		Phone:		Geophysicist:		Phone:	
Geoscientist:		Phone:		Prod. Engineer:		Phone:	
Res. Engineer:		Phone:		Proj. Field Lead:		Phone:	
Primary Objective (Zones):							
Zone	Zone Name						
RON	BLANCO MESAVERDE (PRORATED GAS)						
FRR	BASIN DAKOTA (PRORATED GAS)						
Location: Surface Datum Code: NAD 27 Straight Hole							
Latitude: 36.787055		Longitude: -107.395835		X:	Y:	Section: 30	Range: 005W
Footage X: 1975 FEL		Footage Y: 1385 FNL		Elevation: 6252 (FT)	Township: 030N		
Tolerance:							
Location Type: Restricted		Start Date (Est.): 1/1/2011		Completion Date:		Date In Operation:	
Formation Data: Assume KB = 6267 Units = FT							
Formation Call & Casing Points	Depth (TVD in Ft)	SS (Ft)	MD (Ft)	Depletion (Yes/No)	BHP (PSIG)	BHT	Remarks
Surface Casing	200	6067		<input type="checkbox"/>			12-1/4 hole. 200' 9 5/8" 32.3 ppf, H-40, STC casing. Cement with 120 cuft. Circulate cement to surface.
NACIMIENTO	1136	5131		<input type="checkbox"/>			
OJO ALAMO	2381	3886		<input type="checkbox"/>			
KIRTLAND	2489	3778		<input type="checkbox"/>			
FRUITLAND	2650	3617		<input type="checkbox"/>			Possible Gas
PICTURED CLIFFS	3174	3093		<input type="checkbox"/>			
LEWIS	3284	2983		<input type="checkbox"/>			
Intermediate Casing	3384	2883		<input type="checkbox"/>	124		8 3/4" Hole. 7", 23 ppf, J-55, LTC Casing. Cement with 762 cuft. Circulate cement to surface.
HUERFANITO BENTONITE	3947	2320		<input type="checkbox"/>			
CHACRA	4277	1990		<input type="checkbox"/>			
UPPER CLIFF HOUSE	4823	1444		<input type="checkbox"/>			Gas; Est. Top Perf - 4825 (1442)
MASSIVE CLIFF HOUSE	5120	1147		<input type="checkbox"/>	391		Gas; Cliffhouse is dry
MENEFEE	5163	1104		<input type="checkbox"/>			
POINT LOOKOUT	5431	836		<input type="checkbox"/>			
MANCOS	5783	484		<input type="checkbox"/>			
UPPER GALLUP	6652	-385		<input type="checkbox"/>			
GREENHORN	7387	-1120		<input type="checkbox"/>			
GRANEROS	7439	-1172		<input type="checkbox"/>			
TWO WELLS	7559	-1292		<input type="checkbox"/>	3296		Gas
PAGUATE	7565	-1298		<input type="checkbox"/>			
UPPER CUBERO	7579	-1312		<input type="checkbox"/>			
LOWER CUBERO	7610	-1343		<input type="checkbox"/>			Est. Btm Perf - 7667 (- 1400) based on offset wells
ENCINAL	7682	-1415		<input type="checkbox"/>			TD - T/ENCN
Total Depth	7682	-1415		<input type="checkbox"/>	218		6-1/4" hole, 4-1/2" 10.5/11.6 ppf, J-55, STC/LTC casing. Cement w/ 585 cuft. Circulate cement a minimum of 100' inside the previous casing string.

PROJECT PROPOSAL - New Drill / Sidetrack

SAN JUAN 30-5 UNIT 105

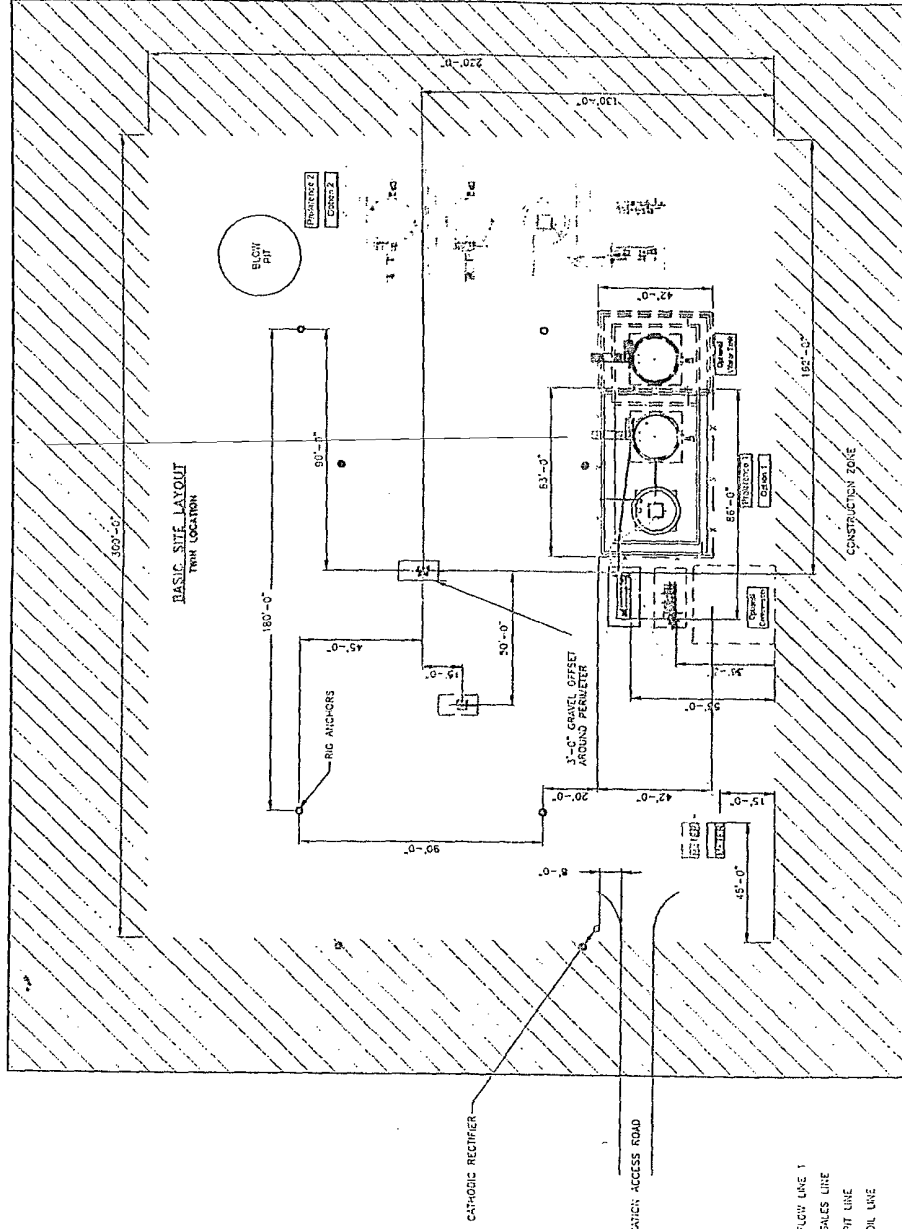
DEVELOPMENT

Reference Wells:		
Reference Type	Well Name	Comments
Production	SJ 30-5 27-20	30N 5W 20 SW SW
Production	SJ 30-5 89	30N 5W 19 NW SE NE
Production	SJ 30-5 6-19	30N 5W 19 SW SW

Logging Program:			
Intermediate Logs:	<input type="checkbox"/> Log only if show	<input type="checkbox"/> GR/ILD	<input type="checkbox"/> Triple Combo

TD Logs:	<input type="checkbox"/> Triple Combo	<input type="checkbox"/> Dipmeter	<input type="checkbox"/> RFT	<input type="checkbox"/> Sonic	<input type="checkbox"/> VSP	<input type="checkbox"/> TDT	<input checked="" type="checkbox"/> Other
Cased Hole GR / CBL							
Mudlog from 100' above top of GLLP to TD - mudlogger will call TD.							

Additional Information:					
Log Type	Stage	From (Ft)	To (Ft)	Tool Type/Name	Remarks



SEE PAGE 1 OF 3 FOR BASIC LAYOUT
ALL DIMENSIONS ARE TO BE TOLERANCE ± 0.01' OF 3'-0" TYP

CONOCO-PHILLIPS HIGH PRESSURE 3 PHASE FACILITY DIAGRAM- SITE LAYOUT										CONOCO-PHILLIPS HIGH PRESSURE 3 PHASE FACILITY DIAGRAM- SITE LAYOUT										CONOCO-PHILLIPS HIGH PRESSURE 3 PHASE FACILITY DIAGRAM- SITE LAYOUT										CONOCO-PHILLIPS HIGH PRESSURE 3 PHASE FACILITY DIAGRAM- SITE LAYOUT										CONOCO-PHILLIPS HIGH PRESSURE 3 PHASE FACILITY DIAGRAM- SITE LAYOUT										CONOCO-PHILLIPS HIGH PRESSURE 3 PHASE FACILITY DIAGRAM- SITE LAYOUT										CONOCO-PHILLIPS HIGH PRESSURE 3 PHASE FACILITY DIAGRAM- SITE LAYOUT										CONOCO-PHILLIPS HIGH PRESSURE 3 PHASE FACILITY DIAGRAM- SITE LAYOUT										CONOCO-PHILLIPS HIGH PRESSURE 3 PHASE FACILITY DIAGRAM- SITE LAYOUT										CONOCO-PHILLIPS HIGH PRESSURE 3 PHASE FACILITY DIAGRAM- SITE LAYOUT										CONOCO-PHILLIPS HIGH PRESSURE 3 PHASE FACILITY DIAGRAM- SITE LAYOUT										CONOCO-PHILLIPS HIGH PRESSURE 3 PHASE FACILITY DIAGRAM- SITE LAYOUT										CONOCO-PHILLIPS HIGH PRESSURE 3 PHASE FACILITY DIAGRAM- SITE LAYOUT										CONOCO-PHILLIPS HIGH PRESSURE 3 PHASE FACILITY DIAGRAM- SITE LAYOUT										CONOCO-PHILLIPS HIGH PRESSURE 3 PHASE FACILITY DIAGRAM- SITE LAYOUT										CONOCO-PHILLIPS HIGH PRESSURE 3 PHASE FACILITY DIAGRAM- SITE LAYOUT										CONOCO-PHILLIPS HIGH PRESSURE 3 PHASE FACILITY DIAGRAM- SITE LAYOUT										CONOCO-PHILLIPS HIGH PRESSURE 3 PHASE FACILITY DIAGRAM- SITE LAYOUT										CONOCO-PHILLIPS HIGH PRESSURE 3 PHASE FACILITY DIAGRAM- SITE LAYOUT										CONOCO-PHILLIPS HIGH PRESSURE 3 PHASE FACILITY DIAGRAM- SITE LAYOUT										CONOCO-PHILLIPS HIGH PRESSURE 3 PHASE FACILITY DIAGRAM- SITE LAYOUT										CONOCO-PHILLIPS HIGH PRESSURE 3 PHASE FACILITY DIAGRAM- SITE LAYOUT										CONOCO-PHILLIPS HIGH PRESSURE 3 PHASE FACILITY DIAGRAM- SITE LAYOUT										CONOCO-PHILLIPS HIGH PRESSURE 3 PHASE FACILITY DIAGRAM- SITE LAYOUT										CONOCO-PHILLIPS HIGH PRESSURE 3 PHASE FACILITY DIAGRAM- SITE LAYOUT										CONOCO-PHILLIPS HIGH PRESSURE 3 PHASE FACILITY DIAGRAM- SITE LAYOUT										CONOCO-PHILLIPS HIGH PRESSURE 3 PHASE FACILITY DIAGRAM- SITE LAYOUT										CONOCO-PHILLIPS HIGH PRESSURE 3 PHASE FACILITY DIAGRAM- SITE LAYOUT										CONOCO-PHILLIPS HIGH PRESSURE 3 PHASE FACILITY DIAGRAM- SITE LAYOUT										CONOCO-PHILLIPS HIGH PRESSURE 3 PHASE FACILITY DIAGRAM- SITE LAYOUT										CONOCO-PHILLIPS HIGH PRESSURE 3 PHASE FACILITY DIAGRAM- SITE LAYOUT										CONOCO-PHILLIPS HIGH PRESSURE 3 PHASE FACILITY DIAGRAM- SITE LAYOUT										CONOCO-PHILLIPS HIGH PRESSURE 3 PHASE FACILITY DIAGRAM- SITE LAYOUT										CONOCO-PHILLIPS HIGH PRESSURE 3 PHASE FACILITY DIAGRAM- SITE LAYOUT										CONOCO-PHILLIPS HIGH PRESSURE 3 PHASE FACILITY DIAGRAM- SITE LAYOUT										CONOCO-PHILLIPS HIGH PRESSURE 3 PHASE FACILITY DIAGRAM- SITE LAYOUT										CONOCO-PHILLIPS HIGH PRESSURE 3 PHASE FACILITY DIAGRAM- SITE LAYOUT										CONOCO-PHILLIPS HIGH PRESSURE 3 PHASE FACILITY DIAGRAM- SITE LAYOUT										CONOCO-PHILLIPS HIGH PRESSURE 3 PHASE FACILITY DIAGRAM- SITE LAYOUT										CONOCO-PHILLIPS HIGH PRESSURE 3 PHASE FACILITY DIAGRAM- SITE LAYOUT										CONOCO-PHILLIPS HIGH PRESSURE 3 PHASE FACILITY DIAGRAM- SITE LAYOUT										CONOCO-PHILLIPS HIGH PRESSURE 3 PHASE FACILITY DIAGRAM- SITE LAYOUT										CONOCO-PHILLIPS HIGH PRESSURE 3 PHASE FACILITY DIAGRAM- SITE LAYOUT										CONOCO-PHILLIPS HIGH PRESSURE 3 PHASE FACILITY DIAGRAM- SITE LAYOUT										CONOCO-PHILLIPS HIGH PRESSURE 3 PHASE FACILITY DIAGRAM- SITE LAYOUT										CONOCO-PHILLIPS HIGH PRESSURE 3 PHASE FACILITY DIAGRAM- SITE LAYOUT										CONOCO-PHILLIPS HIGH PRESSURE 3 PHASE FACILITY DIAGRAM- SITE LAYOUT										CONOCO-PHILLIPS HIGH PRESSURE 3 PHASE FACILITY DIAGRAM- SITE LAYOUT										CONOCO-PHILLIPS HIGH PRESSURE 3 PHASE FACILITY DIAGRAM- SITE LAYOUT										CONOCO-PHILLIPS HIGH PRESSURE 3 PHASE FACILITY DIAGRAM- SITE LAYOUT										CONOCO-PHILLIPS HIGH PRESSURE 3 PHASE FACILITY DIAGRAM- SITE LAYOUT										CONOCO-PHILLIPS HIGH PRESSURE 3 PHASE FACILITY DIAGRAM- SITE LAYOUT										CONOCO-PHILLIPS HIGH PRESSURE 3 PHASE FACILITY DIAGRAM- SITE LAYOUT										CONOCO-PHILLIPS HIGH PRESSURE 3 PHASE FACILITY DIAGRAM- SITE LAYOUT										CONOCO-PHILLIPS HIGH PRESSURE 3 PHASE FACILITY DIAGRAM- SITE LAYOUT										CONOCO-PHILLIPS HIGH PRESSURE 3 PHASE FACILITY DIAGRAM- SITE LAYOUT										CONOCO-PHILLIPS HIGH PRESSURE 3 PHASE FACILITY DIAGRAM- SITE LAYOUT										CONOCO-PHILLIPS HIGH PRESSURE 3 PHASE FACILITY DIAGRAM- SITE LAYOUT										CONOCO-PHILLIPS HIGH PRESSURE 3 PHASE FACILITY DIAGRAM- SITE LAYOUT										CONOCO-PHILLIPS HIGH PRESSURE 3 PHASE FACILITY DIAGRAM- SITE LAYOUT										CONOCO-PHILLIPS HIGH PRESSURE 3 PHASE FACILITY DIAGRAM- SITE LAYOUT										CONOCO-PHILLIPS HIGH PRESSURE 3 PHASE FACILITY DIAGRAM- SITE LAYOUT										CONOCO-PHILLIPS HIGH PRESSURE 3 PHASE FACILITY DIAGRAM- SITE LAYOUT										CONOCO-PHILLIPS HIGH PRESSURE 3 PHASE FACILITY DIAGRAM- SITE LAYOUT										CONOCO-PHILLIPS HIGH PRESSURE 3 PHASE FACILITY DIAGRAM- SITE LAYOUT										CONOCO-PHILLIPS HIGH PRESSURE 3 PHASE FACILITY DIAGRAM- SITE LAYOUT										CONOCO-PHILLIPS HIGH PRESSURE 3 PHASE FACILITY DIAGRAM- SITE LAYOUT										CONOCO-PHILLIPS HIGH PRESSURE 3 PHASE FACILITY DIAGRAM- SITE LAYOUT										CONOCO-PHILLIPS HIGH PRESSURE 3 PHASE FACILITY DIAGRAM- SITE LAYOUT										CONOCO-PHILLIPS HIGH PRESSURE 3 PHASE FACILITY DIAGRAM- SITE LAYOUT										CONOCO-PHILLIPS HIGH PRESSURE 3 PHASE FACILITY DIAGRAM- SITE LAYOUT										CONOCO-PHILLIPS HIGH PRESSURE 3 PHASE FACILITY DIAGRAM- SITE LAYOUT										CONOCO-PHILLIPS HIGH PRESSURE 3 PHASE FACILITY DIAGRAM- SITE LAYOUT										CONOCO-PHILLIPS HIGH PRESSURE 3 PHASE FACILITY DIAGRAM- SITE LAYOUT										CONOCO-PHILLIPS HIGH PRESSURE 3 PHASE FACILITY DIAGRAM- SITE LAYOUT										CONOCO-PHILLIPS HIGH PRESSURE 3 PHASE FACILITY DIAGRAM- SITE LAYOUT										CONOCO-PHILLIPS HIGH PRESSURE 3 PHASE FACILITY DIAGRAM- SITE LAYOUT										CONOCO-PHILLIPS HIGH PRESSURE 3 PHASE FACILITY DIAGRAM- SITE LAYOUT										CONOCO-PHILLIPS HIGH PRESSURE 3 PHASE FACILITY DIAGRAM- SITE LAYOUT										CONOCO-PHILLIPS HIGH PRESSURE 3 PHASE FACILITY DIAGRAM- SITE LAYOUT										CONOCO-PHILLIPS HIGH PRESSURE 3 PHASE FACILITY DIAGRAM- SITE LAYOUT										CONOCO-PHILLIPS HIGH PRESSURE 3 PHASE FACILITY DIAGRAM- SITE LAYOUT										CONOCO-PHILLIPS HIGH PRESSURE 3 PHASE FACILITY DIAGRAM- SITE LAYOUT										CONOCO-PHILLIPS HIGH PRESSURE 3 PHASE FACILITY DIAGRAM- SITE LAYOUT										CONOCO-PHILLIPS HIGH PRESSURE 3 PHASE FACILITY DIAGRAM- SITE LAYOUT										CONOCO-PHILLIPS HIGH PRESSURE 3 PHASE FACILITY DIAGRAM- SITE LAYOUT										CONOCO-PHILLIPS HIGH PRESSURE 3 PHASE FACILITY DIAGRAM- SITE LAYOUT										CONOCO-PHILLIPS HIGH PRESSURE 3 PHASE FACILITY DIAGRAM- SITE LAYOUT										CONOCO-PHILLIPS HIGH PRESSURE 3 PHASE FACILITY DIAGRAM- SITE LAYOUT										CONOCO-PHILLIPS HIGH PRESSURE 3 PHASE FACILITY DIAGRAM- SITE LAYOUT										CONOCO-PHILLIPS HIGH PRESSURE 3 PHASE FACILITY DIAGRAM- SITE LAYOUT										CONOCO-PHILLIPS HIGH PRESSURE 3 PHASE FACILITY DIAGRAM- SITE LAYOUT										CONOCO-PHILLIPS HIGH PRESSURE 3 PHASE FACILITY DIAGRAM- SITE LAYOUT										CONOCO-PHILLIPS HIGH PRESSURE 3 PHASE FACILITY DIAGRAM- SITE LAYOUT										CONOCO-PHILLIPS HIGH PRESSURE 3 PHASE FACILITY DIAGRAM- SITE LAYOUT										CONOCO-PHILLIPS HIGH PRESSURE 3 PHASE FACILITY DIAGRAM- SITE LAYOUT										CONOCO-PHILLIPS HIGH PRESSURE 3 PHASE FACILITY DIAGRAM- SITE LAYOUT										CONOCO-PHILLIPS HIGH PRESSURE 3 PHASE FACILITY DIAGRAM- SITE LAYOUT										CONOCO-PHILLIPS HIGH PRESSURE 3 PHASE FACILITY DIAGRAM- SITE LAYOUT										CONOCO-PHILLIPS HIGH PRESSURE 3 PHASE FACILITY DIAGRAM- SITE LAYOUT										CONOCO-PHILLIPS HIGH PRESSURE 3 PHASE FACILITY DIAGRAM- SITE LAYOUT										CONOCO-PHILLIPS HIGH PRESSURE 3 PHASE FACILITY DIAGRAM- SITE LAYOUT										CONOCO-PHILLIPS HIGH PRESSURE 3 PHASE FACILITY DIAGRAM- SITE LAYOUT										CONOCO-PHILLIPS HIGH PRESSURE 3 PHASE FACILITY DIAGRAM- SITE LAYOUT										CONOCO-PHILLIPS HIGH PRESSURE 3 PHASE FACILITY DIAGRAM- SITE LAYOUT										CONOCO-PHILLIPS HIGH PRESSURE 3 PHASE FACILITY DIAGRAM- SITE LAYOUT										CONOCO-PHILLIPS HIGH PRESSURE 3 PHASE FACILITY DIAGRAM- SITE LAYOUT										CONOCO-PHILLIPS HIGH PRESSURE 3 PHASE FACILITY DIAGRAM- SITE LAYOUT										CONOCO-PHILLIPS HIGH PRESSURE 3 PHASE FACILITY DIAGRAM- SITE LAYOUT										CONOCO-PHILLIPS HIGH PRESSURE 3 PHASE FACILITY DIAGRAM- SITE LAYOUT										CONOCO-PHILLIPS HIGH PRESSURE 3 PHASE FACILITY DIAGRAM- SITE LAYOUT										CONOCO-PHILLIPS HIGH PRESSURE 3 PHASE FACILITY DIAGRAM- SITE LAYOUT										CONOCO-PHILLIPS HIGH PRESSURE 3 PHASE FACILITY DIAGRAM- SITE LAYOUT										CONOCO-PHILLIPS HIGH PRESSURE 3 PHASE FACILITY DIAGRAM- SITE LAYOUT										CONOCO-PHILLIPS HIGH PRESSURE 3 PHASE FACILITY DIAGRAM- SITE LAYOUT										CONOCO-PHILLIPS HIGH PRESSURE 3 PHASE FACILITY DIAGRAM- SITE LAYOUT										CONOCO-PHILLIPS HIGH PRESSURE 3 PHASE FACILITY DIAGRAM- SITE LAYOUT										CONOCO-PHILLIPS HIGH PRESSURE 3 PHASE FACILITY DIAGRAM- SITE LAYOUT										CONOCO-PHILLIPS HIGH PRESSURE 3 PHASE FACILITY DIAGRAM- SITE LAYOUT										CONOCO-PHILLIPS HIGH PRESSURE 3 PHASE FACILITY DIAGRAM- SITE LAYOUT										CONOCO-PHILLIPS HIGH PRESSURE 3 PHASE FACILITY DIAGRAM- SITE LAYOUT										CONOCO-PHILLIPS HIGH PRESSURE 3 PHASE FACILITY DIAGRAM- SITE LAYOUT										CONOCO-PHILLIPS HIGH PRESSURE 3 PHASE FACILITY DIAGRAM- SITE LAYOUT										CONOCO-PHILLIPS HIGH PRESSURE 3 PHASE FACILITY DIAGRAM- SITE LAYOUT										CONOCO-PHILLIPS HIGH PRESSURE 3 PHASE FACILITY DIAGRAM- SITE LAYOUT										CONOCO-PHILLIPS HIGH PRESSURE 3 PHASE FACILITY DIAGRAM- SITE LAYOUT										CONOCO-PHILLIPS HIGH PRESSURE 3 PHASE FAC									
---	--	--	--	--	--	--	--	--	--	---	--	--	--	--	--	--	--	--	--	---	--	--	--	--	--	--	--	--	--	---	--	--	--	--	--	--	--	--	--	---	--	--	--	--	--	--	--	--	--	---	--	--	--	--	--	--	--	--	--	---	--	--	--	--	--	--	--	--	--	---	--	--	--	--	--	--	--	--	--	---	--	--	--	--	--	--	--	--	--	---	--	--	--	--	--	--	--	--	--	---	--	--	--	--	--	--	--	--	--	---	--	--	--	--	--	--	--	--	--	---	--	--	--	--	--	--	--	--	--	---	--	--	--	--	--	--	--	--	--	---	--	--	--	--	--	--	--	--	--	---	--	--	--	--	--	--	--	--	--	---	--	--	--	--	--	--	--	--	--	---	--	--	--	--	--	--	--	--	--	---	--	--	--	--	--	--	--	--	--	---	--	--	--	--	--	--	--	--	--	---	--	--	--	--	--	--	--	--	--	---	--	--	--	--	--	--	--	--	--	---	--	--	--	--	--	--	--	--	--	---	--	--	--	--	--	--	--	--	--	---	--	--	--	--	--	--	--	--	--	---	--	--	--	--	--	--	--	--	--	---	--	--	--	--	--	--	--	--	--	---	--	--	--	--	--	--	--	--	--	---	--	--	--	--	--	--	--	--	--	---	--	--	--	--	--	--	--	--	--	---	--	--	--	--	--	--	--	--	--	---	--	--	--	--	--	--	--	--	--	---	--	--	--	--	--	--	--	--	--	---	--	--	--	--	--	--	--	--	--	---	--	--	--	--	--	--	--	--	--	---	--	--	--	--	--	--	--	--	--	---	--	--	--	--	--	--	--	--	--	---	--	--	--	--	--	--	--	--	--	---	--	--	--	--	--	--	--	--	--	---	--	--	--	--	--	--	--	--	--	---	--	--	--	--	--	--	--	--	--	---	--	--	--	--	--	--	--	--	--	---	--	--	--	--	--	--	--	--	--	---	--	--	--	--	--	--	--	--	--	---	--	--	--	--	--	--	--	--	--	---	--	--	--	--	--	--	--	--	--	---	--	--	--	--	--	--	--	--	--	---	--	--	--	--	--	--	--	--	--	---	--	--	--	--	--	--	--	--	--	---	--	--	--	--	--	--	--	--	--	---	--	--	--	--	--	--	--	--	--	---	--	--	--	--	--	--	--	--	--	---	--	--	--	--	--	--	--	--	--	---	--	--	--	--	--	--	--	--	--	---	--	--	--	--	--	--	--	--	--	---	--	--	--	--	--	--	--	--	--	---	--	--	--	--	--	--	--	--	--	---	--	--	--	--	--	--	--	--	--	---	--	--	--	--	--	--	--	--	--	---	--	--	--	--	--	--	--	--	--	---	--	--	--	--	--	--	--	--	--	---	--	--	--	--	--	--	--	--	--	---	--	--	--	--	--	--	--	--	--	---	--	--	--	--	--	--	--	--	--	---	--	--	--	--	--	--	--	--	--	---	--	--	--	--	--	--	--	--	--	---	--	--	--	--	--	--	--	--	--	---	--	--	--	--	--	--	--	--	--	---	--	--	--	--	--	--	--	--	--	---	--	--	--	--	--	--	--	--	--	---	--	--	--	--	--	--	--	--	--	---	--	--	--	--	--	--	--	--	--	---	--	--	--	--	--	--	--	--	--	---	--	--	--	--	--	--	--	--	--	---	--	--	--	--	--	--	--	--	--	---	--	--	--	--	--	--	--	--	--	---	--	--	--	--	--	--	--	--	--	---	--	--	--	--	--	--	--	--	--	---	--	--	--	--	--	--	--	--	--	---	--	--	--	--	--	--	--	--	--	---	--	--	--	--	--	--	--	--	--	---	--	--	--	--	--	--	--	--	--	---	--	--	--	--	--	--	--	--	--	---	--	--	--	--	--	--	--	--	--	---	--	--	--	--	--	--	--	--	--	---	--	--	--	--	--	--	--	--	--	---	--	--	--	--	--	--	--	--	--	---	--	--	--	--	--	--	--	--	--	---	--	--	--	--	--	--	--	--	--	---	--	--	--	--	--	--	--	--	--	---	--	--	--	--	--	--	--	--	--	---	--	--	--	--	--	--	--	--	--	---	--	--	--	--	--	--	--	--	--	---	--	--	--	--	--	--	--	--	--	---	--	--	--	--	--	--	--	--	--	---	--	--	--	--	--	--	--	--	--	---	--	--	--	--	--	--	--	--	--	---	--	--	--	--	--	--	--	--	--	---	--	--	--	--	--	--	--	--	--	---	--	--	--	--	--	--	--	--	--	---	--	--	--	--	--	--	--	--	--	---	--	--	--	--	--	--	--	--	--	---	--	--	--	--	--	--	--	--	--	---	--	--	--	--	--	--	--	--	--	---	--	--	--	--	--	--	--	--	--	---	--	--	--	--	--	--	--	--	--	---	--	--	--	--	--	--	--	--	--	---	--	--	--	--	--	--	--	--	--	---	--	--	--	--	--	--	--	--	--	---	--	--	--	--	--	--	--	--	--	---	--	--	--	--	--	--	--	--	--	---	--	--	--	--	--	--	--	--	--	---	--	--	--	--	--	--	--	--	--	---	--	--	--	--	--	--	--	--	--	---	--	--	--	--	--	--	--	--	--	---	--	--	--	--	--	--	--	--	--	---	--	--	--	--	--	--	--	--	--	---	--	--	--	--	--	--	--	--	--	---	--	--	--	--	--	--	--	--	--	---	--	--	--	--	--	--	--	--	--	---	--	--	--	--	--	--	--	--	--	---	--	--	--	--	--	--	--	--	--	---	--	--	--	--	--	--	--	--	--	---	--	--	--	--	--	--	--	--	--	---	--	--	--	--	--	--	--	--	--	---	--	--	--	--	--	--	--	--	--	---	--	--	--	--	--	--	--	--	--

Directions from the Post Office
in Blanco, NM to
CONOCOPHILLIPS COMPANY
SAN JUAN 30-5 UNIT #105
1385' FNL & 1975' FEL,
Section 30, T30N, R5W, N.M.P.M.,
Rio Arriba County, New Mexico
Latitude: 36° 47' 13.425" N
Longitude: 107° 23' 47.177" W
Nad 1983

From the Post Office in Blanco, NM
Take Highway 64 East for 28.8 miles
To Hwy 527 (Simms Mesa Hwy),
Turn left (northwest) on Hwy 527 for 8.0 miles,
To Rosa Road, turn right (northeast) for 6.6 miles,
Across La Jara Bridge to the y-intersection,
Turn right (northeasterly) 0.1 miles,
continue (southeasterly) for 0.8 miles to y-intersection,
stay right (southeasterly) across La Fragua wash for 0.8 miles
to y-intersection,
stay left (southerly) 1.7 miles,
turn right (southerly) 1.4 miles across La Jara wash,
turn right (northwesterly) 300',
to beginning of new access on west side of existing location,
San Juan 30-5 unit #209,
Turn left (westerly) 635.09' to newly staked location.