

UNITED STATES
DEPARTMENT OF INTERIOR
BUREAU OF LAND MANAGEMENT

FORM APPROVED
Budget Bureau No. 1004-0135
Expires: March 31, 1993

SUNDRY NOTICE AND REPORTS ON WELLS

Do not use this form for proposals to drill or to deepen or reentry to a different reservoir. Use "APPLICATION TO DRILL" for permit for such proposals.

070 Farmington, NM

SUBMIT IN TRIPLICATE

1. Type of Well
Oil Well ☒ Gas Well ☐ Other ☐

2. Name of Operator
WILLIAMS PRODUCTION COMPANY

3. Address and Telephone No.
PO BOX 3102 MS 25-1, TULSA, OK 74101 (918) 561-6254

4. Location of Well (Footage, Sec., T., R., M., or Survey Description)
1850' FSL & 790' FWL, NW/4 SW/4, SEC 31 T31N R5W

5. Lease Designation and Serial No.
SF-078764

6. If Indian, Allottee or Tribe Name

7. If Unit or CA, Agreement Designation
ROSA UNIT

8. Well Name and No.
ROSA UNIT #97

9. API Well No.
30-039-23304

10. Field and Pool, or Exploratory Area
UNDES. GALLUP/BASIN DAKOTA

11. County or Parish, State
RIO ARRIBA, NM

CHECK APPROPRIATE BOX(s) TO INDICATE NATURE OF NOTICE, REPORT, OR OTHER DATA

TYPE OF SUBMISSION

☒ Notice of Intent
☒ Subsequent Report
Final Abandonment

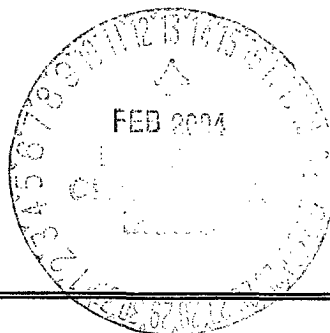
TYPE OF ACTION

X Abandonment ~~to Dakota~~
Recompletion
Plugging Back
Casing Repair
Altering Casing
Other _____

Change of Plans
New Construction
Non-Routine Fracturing
Water Shut-Off
Conversion to Injection
Dispose Water
(Note: Report results of multiple completion on Well Completion or Recompletion Report and Log form.)

13. Describe Proposed or Completed Operations (Clearly state all pertinent details, and give pertinent dates, including estimated date of starting any proposed work. If well is directionally drilled, give subsurface locations and measured and true vertical depths for all markers and zones pertinent to this work.)*

Williams Production Company plans to P&A ^{Well} ~~Dakota formation~~ per the attached procedure. An attempted workover was started in December, but cannot be completed as planned. The well did not pass the 2003 packer leakage test and is subject to a mandatory repair. Work will begin as soon as approval is received.



14. I hereby certify that the foregoing is true and correct

Signed Tracy Ross
TRACY ROSS

Title PRODUCTION ANALYST

Date February 6, 2004

(This space for Federal or State office use)

Approved by Original Signed: Stephen Mason

Title _____

Date FEB 11 2004

Conditions of approval, if any:

NMOC



Rosa #97
Sec 31, T31N, R5W
February 4, 2004

Purpose: P&A both the Gallup and the Dakota zones. Additional cement will be set from 6500' to surface.

NOTE: Contact Steve Mason with the BLM 24 hours before cementing proceeds. If cementing occurs over weekend or on a Monday, contact BLM no later than Thursday.

1. MIRUSU. Hold safety meeting.
2. TIH w/ 2-3/8" tbg to 6500' and set cement retainer.
3. Pump 44 bbls of class Type III cement (100% excess.)
4. Sting out of retainer and pump 27 bbls Class H cement. TOH with 2000' of tubing. Flush tubing with 18 bbls water
5. Pump 27 bbls Class H cement. TOH with 2000' of tubing. Flush tubing with 10 bbls water.
6. Pump 13 bbls Class H cement. TOH with 1000' of tubing. Flush tubing with 6 bbls water. SDON. WOC. (TOC should be 1500'.)
7. Tag TOC. TOH w/ 2-3/8 tubing. Shoot 3 squeeze holes at 1460' (50' below Nacimiento top). Establish circulation into holes and pump 24 bbls Class H cement. Check for returns. If NO returns, TIH with 2-3/8 tubing to 470' and circulate hole clean with water. Shoot 3 squeeze holes at 464'. Establish circulation into holes and pump 10 bbls Class H cement. Check for returns. Set permanent P&A marker.
8. If returns are observed from 1460' squeeze holes, set permanent P&A marker.
9. RD and release BJ.
10. NDBOP. RDMOL. Reclaim and reseed location.

Lance A. Hobbs
Senior Production Engineer

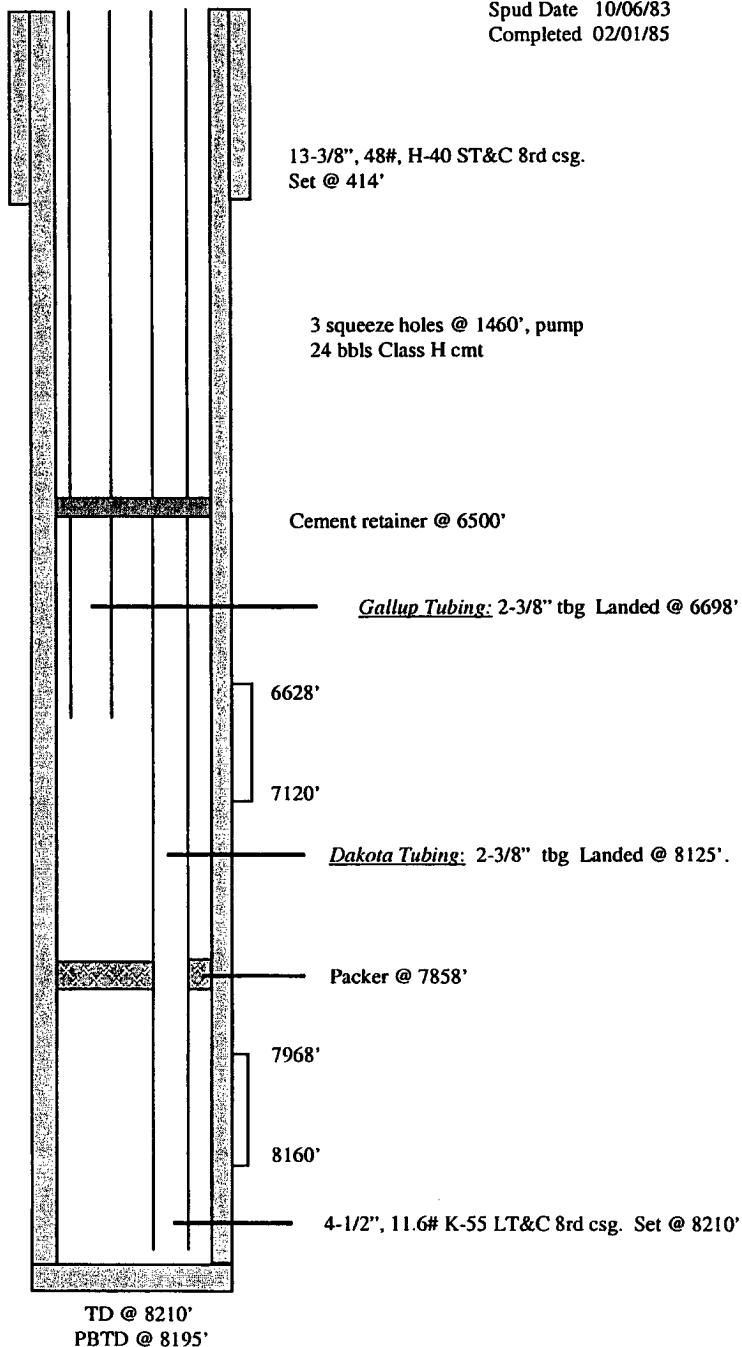
ROSA UNIT #97 **UNDES. GALLUP/BASIN DK**

Location: 1850' FSL, 790' FWL
 NE/4 SW/4 Section 31(K), T31N, R5W
 Rio Arriba Co., NM
 Elevation: 6545' GR 6558' KB

API # 30-039-22304

Spud Date 10/06/83
 Completed 02/01/85

<i>Tops</i>	<i>Depth</i>
Ojo Alamo	2640'
Kirtland	2740'
Fruitland	3150'
Pictured Cliffs	3280'
Lewis	3825'
Chacra	5465'
Point Lookout	5785'
Mancos	6025'
Gallup	6510'
Greenhorn	7792'
Graneros	7845'
Dakota	7960'



Gallup 6628'-7120' (432, 0.38" holes)
 195,000 gal 50# gelled wt Containing 2% KCl, 1 gal
 surfactant per 1000 gal fluid, 5% condensate and 175,000#
 20/40 sand.

Dakota 7968' - 8160'
 SWF w/160,000 gal fluid followed by 300,000# 20/40 sand.

<i>HOLE SIZE</i>	<i>CASING</i>	<i>CEMENT</i>	<i>CMT TOP</i>
17-1/2"	13-3/8"	400 s x	Surface
7-5/8"	4-1/2"	2250 s x	2500'