

**UNITED STATES
DEPARTMENT OF THE INTERIOR
BUREAU OF LAND MANAGEMENT**

RECEIVED**NOV 10 2010**

Sundry Notices and Reports on Wells

Farmington Field Office
Bureau of Land Management

1. Type of Well
GAS

2. Name of Operator
BURLINGTON
RESOURCES OIL & GAS COMPANY LP

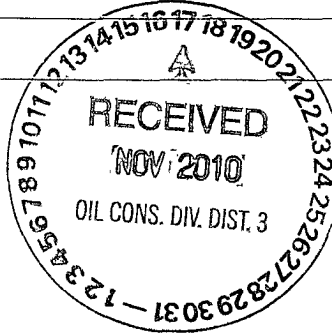
3. Address & Phone No. of Operator

PO Box 4289, Farmington, NM 87499 (505) 326-9700

4. Location of Well, Footage, Sec., T, R, M

Surf: Unit H (SENE), 1490' FNL & 1190' FEL, Section 14, T28N, R11W, NMPM

5. Lease Number
NMNM - 03179
6. If Indian, All. or
Tribe Name
7. Unit Agreement Name
8. Well Name & Number
Aztec 8E
9. API Well No.
30-045-23751
10. Field and Pool
Basin Dakota/Otero Chacra
11. County and State
San Juan Co., NM

**12. CHECK APPROPRIATE BOX TO INDICATE NATURE OF NOTICE, REPORT, OTHER DATA****Type of Submission**

☒ Notice of Intent

☐ Subsequent Report

☐ Final Abandonment

Type of Action

☒ Abandonment

☐ Recompletion

☐ Plugging

☐ Casing Repair

☐ Altering Casing

☐ Change of Plans

☐ New Construction

☐ Non-Routine Fracturing

☐ Water Shut off

☐ Conversion to Injection

Other - _____

13. Describe Proposed or Completed Operations

Burlington Resources would like to P&A the well per attached procedures and wellbore schematics.

14. I hereby certify that the foregoing is true and correct.

Signed Rhonda Rogers Rhonda Rogers Title Staff Regulatory Technician Date 11/10/10

(This space for Federal or State Office use)

APPROVED BY Original Signed: Stephen Mason Title _____ Date **NOV 16 2010**

CONDITION OF APPROVAL, if any:

Title 18 U.S.C. Section 1001, makes it a crime for any person knowingly and willfully to make any department or agency of the United States any false, fictitious or fraudulent statements or representations as to any matter within its jurisdiction.

Notify NMOCD 24 hrs
prior to beginning
operations

NMOCD

ConocoPhillips

AZTEC 8E Expense - P&A

Lat 36° 39' 55.116" N

Long 107° 58' 3.828" W

PLUG AND ABANDONMENT PROCEDURE

NOTE: All cement volumes use 100% excess outside pipe and 50' excess inside. The stabilizing wellbore fluid will be 8.3 ppg to balance all exposed formation pressures. All cement will be Class B, mixed at 15.6 ppg with a 1.18 cf/sx yield.

1.) This project requires a NMOCD C-144 CLEZ Closed-Loop System Permit for the use of an A-Plus steel tank to handle waste fluids circulated from the well and cement wash up.

2.) Install and test location rig anchors. Comply with all NMOCD, BLM and Operator safety regulations. MOL and RU daylight pulling unit. Conduct safety meeting for all personnel on location. Record casing, tubing and bradenhead pressures. NU relief line and blow down well. Kill well with water as necessary and at least pump tubing capacity of water down the tubing. ND wellhead and NU BOP. Function test BOP.

3.) RU blow lines from casing valves and begin blowing down casing pressure. Kill well with 2% KCl, if necessary.

4.)

Rods:	<u>Yes</u>		
Tubing:	<u>Yes</u>	Size: <u>2-3/8"</u>	Length: <u>6340.2'</u>
Packer:	<u>No</u>	Type: _____	

5.) Plug #1 (Dakota Perforations: 6200' - 6100'):

TIH and set 4-1/2" CIBP at 6200'. Pressure test tubing to 1000#. Load casing with water and circulate well clean. Mix 12 sxs Class B cement and spot inside the casing above the CIBP to isolate the Dakota perforations. TOH and LD tubing.

6.) Plug #2 (Gallup top: 5417' - 5317'):

Perforate 3 squeeze holes at 5417'. Establish rate into squeeze holes TIH and set 4-1/2" CR at 5367'. Mix 51 sxs of cement. Squeeze 39 sxs outside casing and leave 12 sxs inside casing to cover Gallup top. TOH and LD tubing.

7.) Plug #3 (Mesaverde top: 3398' - 3298'):

TIH and tag cement. Run CBL to 2600'. *If cement does not exist behind casing, then perforate and squeeze as appropriate (TOC of cement unknown from 2/2010 remedial job).* Mix 12 sxs of Class B cement and spot a balanced plug inside casing to cover Mesaverde top. TOH and LD tubing.

8.) Plug #4 (Chacra Perforations and Top: 2601' - 2501'):

TIH and set 4-1/2" CR at 2601'. *Pressure test casing to 800#. If casing does not test, then spot or tag subsequent plugs as appropriate.* Perforate 3 squeeze holes at 2571'. Establish rate into squeeze holes. Mix 43 sxs of Class B cement. Squeeze 31 sxs behind casing and leave 12 sxs inside casing to cover Chacra perforations and top. PUH.

9.) Plug #5 (Pictured Cliffs and Fruitland Tops: 1816' - 1422'):

Mix 34 sxs Class B cement and spot a balanced plug inside casing to cover the Pictured Cliffs and Fruitland tops. TOH and LD tubing.

9.) Plug #6 (Kirtland and Ojo Alamo Tops: 864' - 590'):

Perforate 3 squeeze holes at 856'. Establish rate into squeeze holes. TIH and set 4-1/2" CR at 814'. Mix 131 sxs of Class B cement. Squeeze 106 sxs behind casing and leave 25 sxs inside casing to cover Kirtland and Ojo Alamo tops. TOH and LD tubing.

10.) Plug #7 (8-5/8" casing shoe to surface: 290'-surface):

Perforate 3 squeeze holes at 290'. Establish circulation out bradenhead with water and circulate the BH annulus clean. Mix 94 sxs Class B cement. Squeeze 71 sxs cement outside the casing and leave 23 inside the casing.

11.) ND BOP and cut off wellhead below surface casing flange. Install P&A marker with cement to comply with regulations. RD, MOL and cut off anchors. Restore location per BLM stipulations

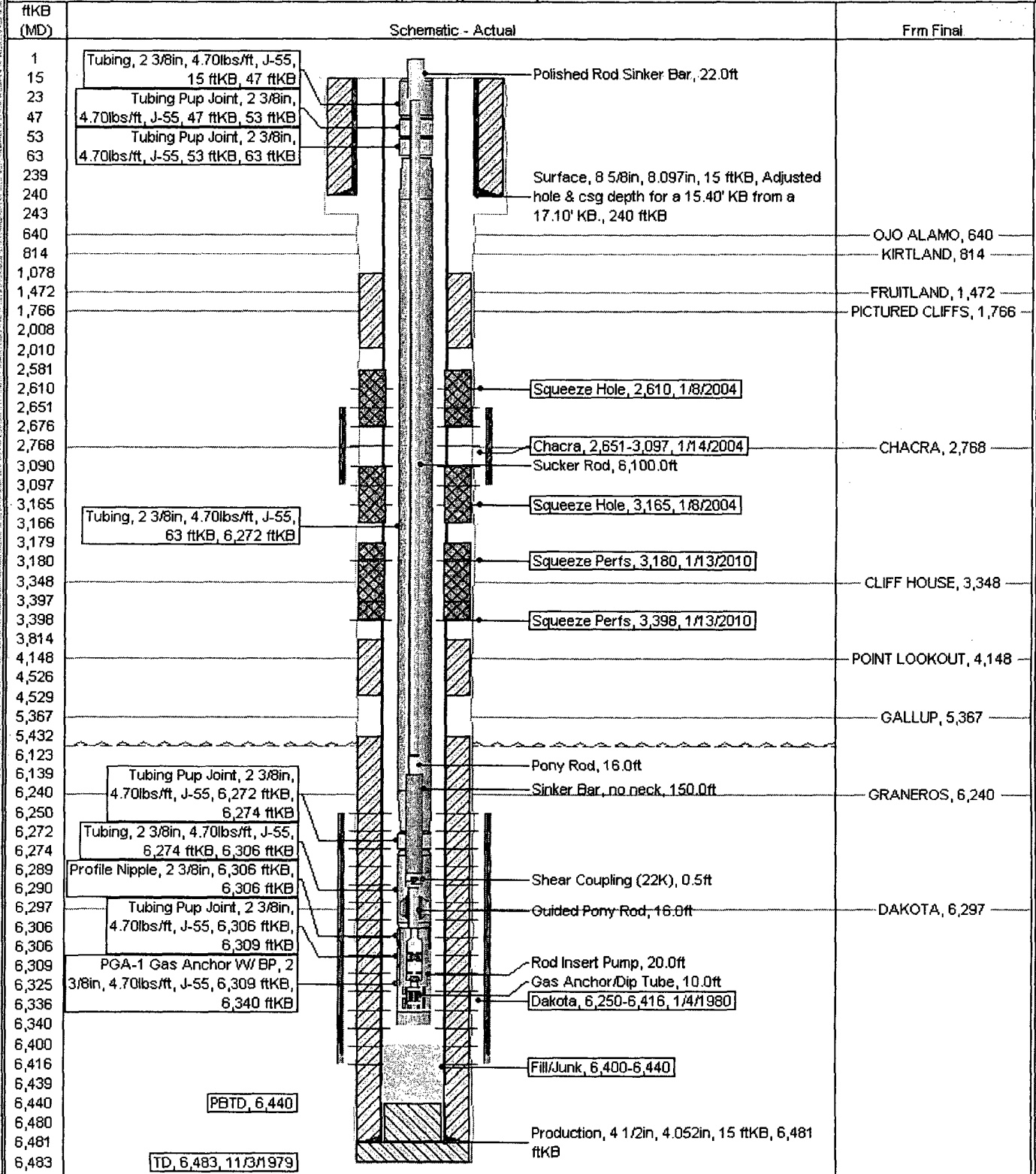
CURRENT SCHEMATIC

ConocoPhillips

AZTEC #8E

District SOUTH	Field Name BASIN DAKOTA (PRORATED GAS)	API / UWI 3004523751	County SAN JUAN	State/Province NEW MEXICO	Edit
Original Spud Date 10/12/1979	Surface Legal Location NMPM,014-028N-011W	E/W Dist (ft) 1,190.00	E/W Ref E	N/S Dist (ft) 1,490.00	N/S Ref N

Well Config: - Original Hole, 10/28/2010 7:03:37 AM



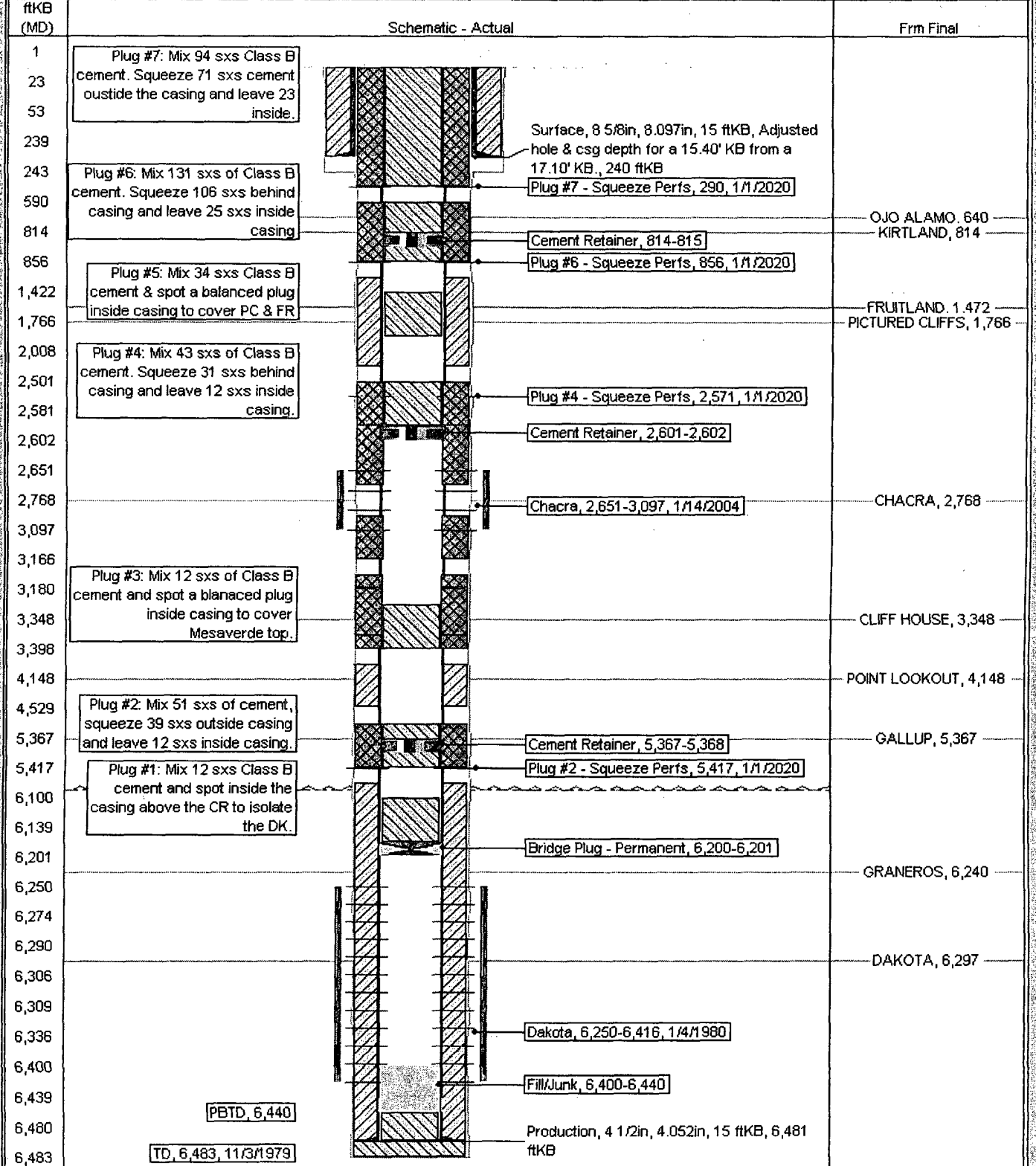
Proposed Schematic

ConocoPhillips

AZTEC #8E

District SOUTH	Field Name BASIN DAKOTA (PRORATED GAS)	API / UWI 3004523751	County SAN JUAN	State/Province NEW MEXICO	Edit
Original Spud Date 10/12/1979	Surface Legal Location NMPM,014-028N-011W	E/W Dist (ft) 1,190.00	E/W Ref E	N/S Dist (ft) 1,490.00	N/S Ref N

Well Config: - Original Hole, 1/1/2020 12:00:00 PM



**UNITED STATES DEPARTMENT OF THE INTERIOR
BUREAU OF LAND MANAGEMENT
FARMINGTON DISTRICT OFFICE
1235 LA PLATA HIGHWAY
FARMINGTON, NEW MEXICO 87401**

Attachment to notice of
Intention to Abandon:

Re: Permanent Abandonment
Well: 8E Aztec

CONDITIONS OF APPROVAL

1. Plugging operations authorized are subject to the attached "General Requirements for Permanent Abandonment of Wells on Federal and Indian Lease."
2. Farmington Office is to be notified at least 24 hours before the plugging operations commence (505) 599-8907.
3. The following modifications to your plugging program are to be made:
 - a) Bring the top of the Chacra plug to 2322'.
 - b) Place the Pictured Cliffs/Fruitland plug from 1830' – 1413'.

You are also required to place cement excesses per 4.2 and 4.4 of the attached General Requirements.

Office Hours: 7:45 a.m. to 4:30 p.m.