

UNITED STATES
DEPARTMENT OF THE INTERIOR
BUREAU OF LAND MANAGEMENT

RECEIVED

DEC 03 2010

Sundry Notices and Reports on Wells

Farmington Field Office
Bureau of Land Management

1. Type of Well
GAS

5. Lease Number
Jicarilla Contract 103
6. If Indian, All. or
Tribe Name
Jicarilla Apache
7. Unit Agreement Name

2. Name of Operator
BURLINGTON
RESOURCES OIL & GAS COMPANY LP

3. Address & Phone No. of Operator

PO Box 4289, Farmington, NM 87499 (505) 326-9700

8. Well Name & Number
Jicarilla 103 11E

9. API Well No.

4. Location of Well, Footage, Sec., T, R, M

Unit K (NESE), 1800' FSL & 1850' FWL, Section 18, T26N, R4W, NMPM

30-039-24074

10. Field and Pool
Blanco MV / Basin DK /
Wild Horse Gallup
11. County and State
Rio Arriba, NM

12. CHECK APPROPRIATE BOX TO INDICATE NATURE OF NOTICE, REPORT, OTHER DATA

Type of Submission

Type of Action

☒ Notice of Intent

☒ Abandonment

☐ Change of Plans

☐ Other --

☐ Subsequent Report

☐ Recompletion

☐ New Construction

☐ Final Abandonment

☐ Plugging

☐ Non-Routine Fracturing

☐ Casing Repair

☐ Water Shut off

☐ Altering Casing

☐ Conversion to Injection

13. Describe Proposed or Completed Operations

Burlington Resources requested permission to P&A the subject well per the attached procedures, current and proposed wellbore schematic.

RCVD DEC 8 '10

OIL CONS. DIV.

DIST. 3

Notify NMOCD 24 hrs
prior to beginning
operations

14. I hereby certify that the foregoing is true and correct.

Signed Crystal Tafoya Crystal Tafoya

Title: Staff Regulatory Technician

Date 12/3/10

(This space for Federal or State Office use)

APPROVED BY Original Signed: Stephen Mason Title

Date DEC 07 2010

CONDITION OF APPROVAL, if any:

Title 18 U.S.C. Section 1001, makes it a crime for any person knowingly and willfully to make any department or agency of the United States any false, fictitious or fraudulent statements or representations as to any matter within its jurisdiction.

NMOCD

ConocoPhillips
JICARILLA 103 11E
Expense - P&A

Lat 36° 29' 4.272" N

Long 107° 17' 38.94" W

PROCEDURE

1. Hold pre-job safety meeting. Comply with all NMOCD, BLM, and COPC safety and environmental regulations. Test rig anchors prior to moving in rig.
2. MIRU work over rig. Check casing, tubing, and bradenhead pressures and record them in Wellview.
3. RU blow lines from casing valves and begin blowing down casing pressure. Kill well with 2% KCl, if necessary.
4. ND wellhead and NU BOPE.

5. TOOH with tubing

Number	Description
223	2 3/8", 4.7#, J-55 Tubing Joints
1	2 3/8", 4.7#, J-55 Pup Joint (2')
1	2 3/8", 4.7#, J-55 Tubing Joint
1	2 3/8" Seat Nipple
1	2 3/8" Mule Shoe/Expendable Check

Note *** All cement volumes use 100% excess outside pipe and 50' excess inside pipe. The stabilizing wellbore fluid will be 8.3 ppg, sufficient to balance all exposed formation pressures. All cement will be ASTM Type II mixed at 15.6 ppg with a 1.18 cf/sk yield. The first stage cement circulated 14 bbls cement off the liner hanger. The top of the second stage was recorded at 330' by a 1995 CBL.

6. **Plug #1 (Gallup Perforations and Top, 6857'-~~6827'~~⁶⁴⁰²):** RIH and set CR at 6857'. Spot ~~22~~ sxs Class B cement and spot a balanced plug inside the casing above CR to isolate the Gallup perforations and top. TOH.

7. **Plug #2 (Mesa Verde Perforations and Top, 4969'-4869'):** RIH and set CR at 4969'. Pressure test tubing to 1000 PSI. Pressure test casing to 800 PSI. If casing does not pressure test, then spot or tag subsequent plugs as appropriate. Spot 12 sx Class B and spot a balanced plug inside the casing above CR to isolate the Mesa Verde interval. PUH.

8. **Plug #3 (Intermediate Casing Shoe and Liner Top, 3771'-3456'):** Mix 43 sx Class B cement and spot a balanced plug inside the casing to cover the Intermediate Casing Shoe through the liner top. PUH with tubing.

8. **Plug #4 (Picture Cliffs, Fruitland, Kirtland and Ojo Alamo tops, ~~3452'-2754'~~^{3464 2726}):** Mix 137 sx Class B cement and spot a balanced plug inside casing to cover through the Ojo Alamo top. PUH with tubing.

9. **Plug #5 (Nacimiento top, ~~1589'~~^{1526 1416} to ~~1689'~~):** Mix 29 sxs Class B cement and spot a balanced plug inside casing to cover the Nacimiento Top. TOH with tubing.

6. **Plug #6 (8.625" Surface casing shoe to Surface, 372'- surface):** Perforate 3 HSC holes at 330'. Establish circulation out bradenhead with water and circulate BH annulus clean. Mix 122 sx Class B cement and spot a balanced plug from 372' to 330'. PUH and continue to pump down 7" casing to circulate good cement out bradenhead. Shut in well and WOC.

7. Nipple down BOP and cut off casing below the casing flange. Install P&A marker with cement to comply with regulations. Rig down, move off location, cut off anchors, and restore location.

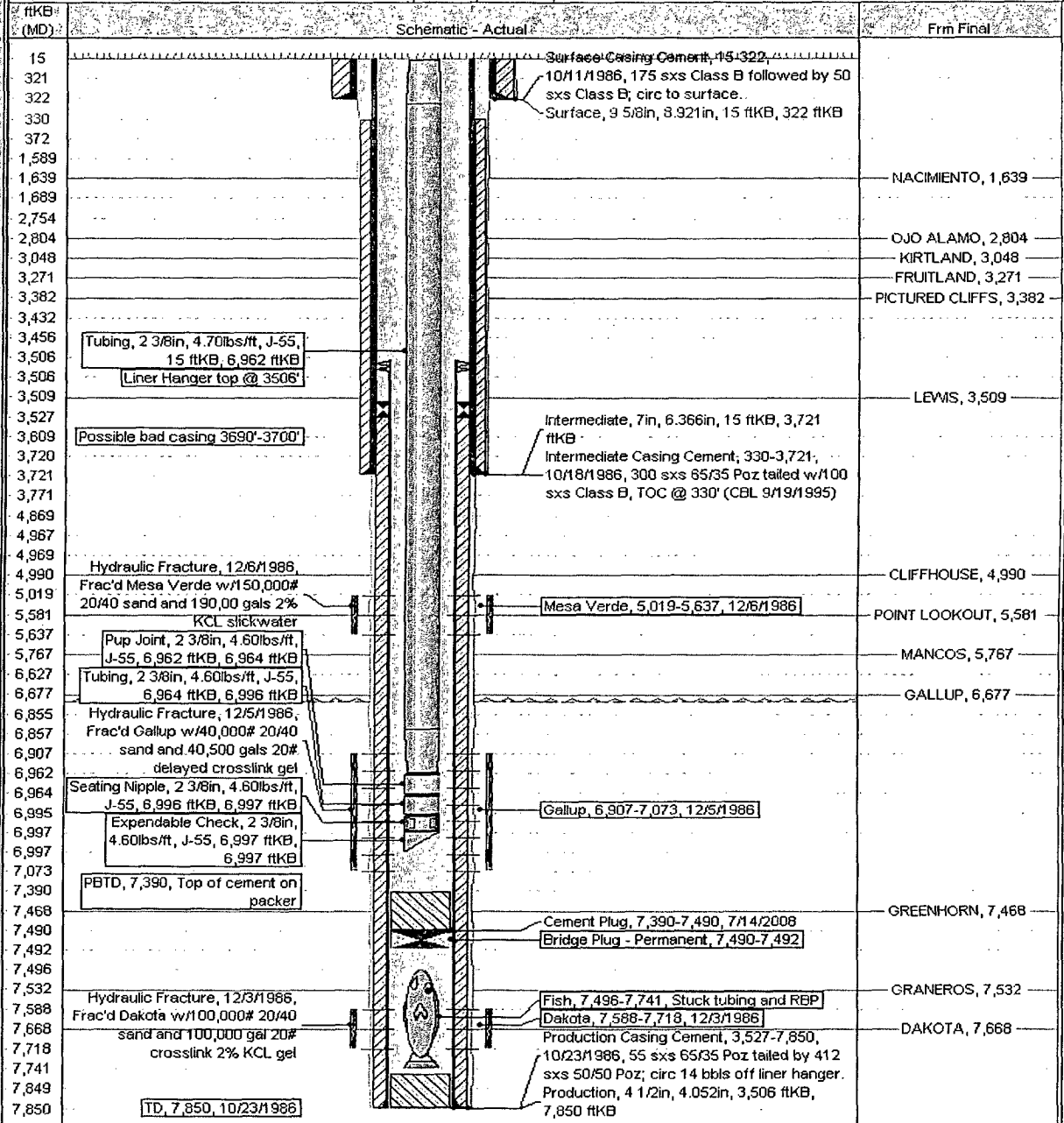
CURRENT SCHEMATIC

ConocoPhillips

JICARILLA 103 #11E

District SOUTH	Field Name BSN DK (PRO GAS)	#0068	API 7 UWI 3003924074	County RIO ARRIBA	State/Province NEW MEXICO	Edit
Original Spud Date 10/11/1986	Surface Legal Location 1800'FSL & 1850'FVL, 18-026N-004W	E/W Dist (ft) 1,850.00	E/W Ref W	N/S Dist (ft) 1,800.00	N/S Ref S	

Well Config: Original Hole, 12/1/2010 7:34:33 AM



ConocoPhillips

Proposed Schematic

JICARILLA 103 #11E

District: SOUTH	Field Name: BSN DK (PRO GAS)	#0068	API 7 UWI: 3003924074	County: RIO ARRIBA	State/Province: NEW MEXICO	Edit
Original Spud Date: 10/11/1986	Surface Legal Location: 1800'FSL & 1850'FVL, 18-026N-004W			E/W Dist (ft): 1,850.00	E/W Ref: W	N/S Dist (ft): 1,800.00 N/S Ref: S

Well Config: Original Hole, 12/1/2010 7:34:33 AM

ftKB (MD)	Schematic - Actual	From Final
15	Surface Casing Cement, 15-322	
321	10/11/1986, 175 sxs Class B followed by 50 sxs Class B, circ to surface.	
322	Surface, 9 5/8in, 8.921in, 15 ftKB, 322 ftKB	
330	Casing cement, 15-330	
372	Cement Plug, 15-372, Cement with 122 sx Class B Cement.	
1,589		
1,639	Cement Plug, 1,589-1,689, Cement with 29 sx Class B Cement	NACIMIENTO, 1,639
1,689		
2,754		
2,804		OJO ALAMO, 2,804
3,048		KIRTLAND, 3,048
3,271		FRUITLAND, 3,271
3,382		PICTURED CLIFFS, 3,382
3,432	Cement Plug, 2,754-3,432, Cement with 137 sx Class B Cement	
3,456		
3,506		
3,506	Liner Hanger top @ 3506'	
3,509	Intermediate, 7in, 8.366in, 15 ftKB, 3,721 ftKB	LEWIS, 3,509
3,527	Intermediate Casing Cement, 330-3,721	
3,609	10/18/1986; 300 sxs 65/35 Poz tailed w/100 sxs Class B, TOC @ 330' (CBL 9/19/1995).	
3,720	Cement Plug, 3,456-3,771, Cement with 43 sx Class B Cement	
3,721		
3,771	Cement Plug, 4,869-4,967, Cement with 12 sx Class B Cement	
4,869	Cement Retainer, 4,967-4,969	
4,967		
4,969		
4,990	Hydraulic Fracture, 12/6/1986, Frac'd Mesa Verde w/150,000# 20/40 sand and 190,000 gals 2% KCL slickwater	CLIFFHOUSE, 4,990
5,019		
5,581	Mesa Verde, 5,019-5,637, 12/6/1986	POINT LOOKOUT, 5,581
5,637		
5,767		MANCOS, 5,767
6,627		
6,677	Cement Plug, 6,627-6,855, Cement with 22 Sx Class B Cement	GALLUP, 6,677
6,855	Cement Retainer, 6,855-6,857	
6,857		
6,907		
6,962	Hydraulic Fracture, 12/5/1986, Frac'd Gallup w/40,000# 20/40 sand and 40,500 gals 20# delayed crosslink gel	
6,964		
6,995		
6,997		
6,997		
7,073	PBTD, 7,390, Top of cement on packer	
7,390		
7,468		GREENHORN, 7,468
7,490	Cement Plug, 7,390-7,490, 7/14/2008	
7,492	Bridge Plug - Permanent, 7,490-7,492	
7,496		
7,532		GRANEROS, 7,532
7,588	Hydraulic Fracture, 12/3/1986, Frac'd Dakota w/100,000# 20/40 sand and 100,000 gal 20# crosslink 2% KCL gel	
7,668		
7,718		DAKOTA, 7,668
7,741		
7,849		
7,850	TD, 7,850, 10/23/1986	
	Fish, 7,496-7,741, Stuck tubing and RBP	
	Dakota, 7,588-7,718, 12/3/1986	
	Production Casing Cement, 3,527-7,850, 10/23/1986, 55 sxs 65/35 Poz tailed by 412 sxs 50/50 Poz, circ 14 bbls off liner hanger.	
	Production, 4 1/2in, 4.052in, 3,506 ftKB, 7,850 ftKB	

**UNITED STATES DEPARTMENT OF THE INTERIOR
BUREAU OF LAND MANAGEMENT
FARMINGTON DISTRICT OFFICE
1235 LA PLATA HIGHWAY
FARMINGTON, NEW MEXICO 87401**

Attachment to notice of
Intention to Abandon:

Re: Permanent Abandonment
Well: 11E Jicarilla 103

CONDITIONS OF APPROVAL

1. Plugging operations authorized are subject to the attached "General Requirements for Permanent Abandonment of Wells on Federal and Indian Lease."
2. Farmington Office is to be notified at least 24 hours before the plugging operations commence (505) 599-8907.
3. The following modifications to your plugging program are to be made:
 - a) Bring the top of the Gallup plug to 6402'.
 - b) Place the Pictured Cliffs/Fruitland/Kirtland/Ojo Alamo plug from 3404' – 2726'.
 - c) Place the Nacimiento plug from 1526' – 1426'.

You are also required to place cement excesses per 4.2 and 4.4 of the attached General Requirements.

Office Hours: 7:45 a.m. to 4:30 p.m.