

District I
1625 N. French Dr., Hobbs, NM 88240

District II
1301 W. Grand Ave., Artesia, NM 88210

District III
1000 Rio Brazos Rd., Aztec, NM 87410

District IV
1220 S. St. Francis Dr., Santa Fe, NM 87505

State of New Mexico
Energy Minerals and Natural Resources
Department
Oil Conservation Division
1220 South St. Francis Dr.
Santa Fe, NM 87505

Form C-144
July 21, 2008

For temporary pits, closed-loop systems, and below-grade tanks, submit to the appropriate NMOCD District Office.

For permanent pits and exceptions submit to the Santa Fe Environmental Bureau office and provide a copy to the appropriate NMOCD District Office.

**Pit, Closed-Loop System, Below-Grade Tank, or
Proposed Alternative Method Permit or Closure Plan Application**

- Type of action: ☐ Permit of a pit, closed-loop system, below-grade tank, or proposed alternative method
☒ Closure of a pit, closed-loop system, below-grade tank, or proposed alternative method
☐ Modification to an existing permit
☐ Closure plan only submitted for an existing permitted or non-permitted pit, closed-loop system, below-grade tank, or proposed alternative method

Instructions: Please submit one application (Form C-144) per individual pit, closed-loop system, below-grade tank or alternative request

Please be advised that approval of this request does not relieve the operator of liability should operations result in pollution of surface water, ground water or the environment. Nor does approval relieve the operator of its responsibility to comply with any other applicable governmental authority's rules, regulations or ordinances.

1
Operator: Burlington Resources Oil & Gas Company, LP OGRID#: 14538
Address: P.O. Box 4289, Farmington, NM 87499
Facility or well name: SAN JUAN 28-6 UNIT 159N
API Number: 30-039-30761 OCD Permit Number: _____
U/L or Qtr/Qtr: F(SE/NW) Section: 18 Township: 28N Range: 6W County: Rio Arriba
Center of Proposed Design: Latitude: 36.66256 °N Longitude: 107.510782 °W NAD: ☐ 1927 ☒ 1983
Surface Owner: ☒ Federal ☐ State ☐ Private ☐ Tribal Trust or Indian Allotment

2
☒ **Pit:** Subsection F or G of 19.15.17.11 NMAC
Temporary: ☒ Drilling ☐ Workover
☐ Permanent ☐ Emergency ☐ Cavitation ☐ P&A
☒ Lined ☐ Unlined Liner type: Thickness 20 mil ☒ LLDPE ☐ HDPE ☐ PVC ☐ Other _____
☒ String-Reinforced
Liner Seams: ☒ Welded ☒ Factory ☐ Other _____ Volume: 7700 bbl Dimensions L 120' x W 55' x D 12'

3
☐ **Closed-loop System:** Subsection H of 19.15.17.11 NMAC
Type of Operation: ☐ P&A ☐ Drilling a new well ☐ Workover or Drilling (Applies to activities which require prior approval of a permit or notice of intent)
☐ Drying Pad ☐ Above Ground Steel Tanks ☐ Haul-off Bins ☐ Other _____
☐ Lined ☐ Unlined Liner type: Thickness _____ mil ☐ LLDPE ☐ HDPE ☐ PVD ☐ Other _____
Liner Seams: ☐ Welded ☐ Factory ☐ Other _____

4
☐ **Below-grade tank:** Subsection I of 19.15.17.11 NMAC
Volume: _____ bbl Type of fluid: _____
Tank Construction material: _____
☐ Secondary containment with leak detection ☐ Visible sidewalls, liner, 6-inch lift and automatic overflow shut-off
☐ Visible sidewalls and liner ☐ Visible sidewalls only ☐ Other _____
Liner Type: Thickness _____ mil ☐ HDPE ☐ PVC ☐ Other _____

5
☐ **Alternative Method:**
Submittal of an exception request is required. Exceptions must be submitted to the Santa Fe Environmental Bureau office for consideration of approval.



35

6	<p>Fencing: Subsection D of 19.15.17.11 NMAC (<i>Applies to permanent pit, temporary pits, and below-grade tanks</i>)</p> <p><input type="checkbox"/> Chain link, six feet in height, two strands of barbed wire at top (<i>Required if located within 1000 feet of a permanent residence, school, hospital, institution or church</i>)</p> <p><input type="checkbox"/> Four foot height, four strands of barbed wire evenly spaced between one and four feet</p> <p><input type="checkbox"/> Alternate. Please specify _____</p>
7	<p>Netting: Subsection E of 19.15.17.11 NMAC (<i>Applies to permanent pits and permanent open top tanks</i>)</p> <p><input type="checkbox"/> Screen <input type="checkbox"/> Netting <input type="checkbox"/> Other _____</p> <p><input type="checkbox"/> Monthly inspections (<i>If netting or screening is not physically feasible</i>)</p>
8	<p>Signs: Subsection C of 19.15.17.11 NMAC</p> <p><input type="checkbox"/> 12" X 24", 2" lettering, providing Operator's name, site location, and emergency telephone numbers</p> <p><input checked="" type="checkbox"/> Signed in compliance with 19.15.3.103 NMAC</p>
9	<p>Administrative Approvals and Exceptions:</p> <p>Justifications and/or demonstrations of equivalency are required. Please refer to 19.15.17 NMAC for guidance.</p> <p><i>Please check a box if one or more of the following is requested, if not leave blank:</i></p> <p><input type="checkbox"/> Administrative approval(s): Requests must be submitted to the appropriate division district of the Santa Fe Environmental Bureau office for consideration of approval. (Fencing/BGT Liner)</p> <p><input type="checkbox"/> Exception(s): Requests must be submitted to the Santa Fe Environmental Bureau office for consideration of approval.</p>
10	<p>Siting Criteria (regarding permitting) 19.15.17.10 NMAC</p> <p><i>Instructions: The applicant must demonstrate compliance for each siting criteria below in the application. Recommendations of acceptable source material are provided below. Requests regarding changes to certain siting criteria may require administrative approval from the appropriate district office or may be considered an exception which must be submitted to the Santa Fe Environmental Bureau Office for consideration of approval. Applicant must attach justification for request. Please refer to 19.15.17.10 NMAC for guidance. Siting criteria does not apply to drying pads or above grade-tanks associated with a closed-loop system.</i></p> <p>Ground water is less than 50 feet below the bottom of the temporary pit, permanent pit, or below-grade tank.</p> <p style="padding-left: 20px;">- NM Office of the State Engineer - iWATERS database search; USGS; Data obtained from nearby wells</p> <p><input type="checkbox"/> Yes <input type="checkbox"/> No</p> <p>Within 300 feet of a continuously flowing watercourse, or 200 feet of any other watercourse, lakebed, sinkhole, or playa lake (measured from the ordinary high-water mark).</p> <p style="padding-left: 20px;">- Topographic map; Visual inspection (certification) of the proposed site</p> <p><input type="checkbox"/> Yes <input type="checkbox"/> No</p> <p>Within 300 feet from a permanent residence, school, hospital, institution, or church in existence at the time of initial application.</p> <p style="padding-left: 20px;">(<i>Applies to temporary, emergency, or cavitation pits and below-grade tanks</i>)</p> <p style="padding-left: 20px;">- Visual inspection (certification) of the proposed site; Aerial photo; Satellite image</p> <p><input type="checkbox"/> Yes <input type="checkbox"/> No</p> <p><input type="checkbox"/> NA</p> <p>Within 1000 feet from a permanent residence, school, hospital, institution, or church in existence at the time of initial application.</p> <p style="padding-left: 20px;">(<i>Applied to permanent pits</i>)</p> <p style="padding-left: 20px;">- Visual inspection (certification) of the proposed site; Aerial photo; Satellite image</p> <p><input type="checkbox"/> Yes <input type="checkbox"/> No</p> <p><input type="checkbox"/> NA</p> <p>Within 500 horizontal feet of a private, domestic fresh water well or spring that less than five households use for domestic or stock watering purposes, or within 1000 horizontal feet of any other fresh water well or spring, in existence at the time of initial application.</p> <p style="padding-left: 20px;">- NM Office of the State Engineer - iWATERS database search; Visual inspection (certification) of the proposed site.</p> <p><input type="checkbox"/> Yes <input type="checkbox"/> No</p> <p><input type="checkbox"/> NA</p> <p>Within incorporated municipal boundaries or within a defined municipal fresh water well field covered under a municipal ordinance adopted pursuant to NMSA 1978, Section 3-27-3, as amended</p> <p style="padding-left: 20px;">- Written confirmation or verification from the municipality; Written approval obtained from the municipality</p> <p><input type="checkbox"/> Yes <input type="checkbox"/> No</p> <p><input type="checkbox"/> NA</p> <p>Within 500 feet of a wetland.</p> <p style="padding-left: 20px;">- US Fish and Wildlife Wetland Identification map; Topographic map; Visual inspection (certification) of the proposed site</p> <p><input type="checkbox"/> Yes <input type="checkbox"/> No</p> <p><input type="checkbox"/> NA</p> <p>Within the area overlying a subsurface mine.</p> <p style="padding-left: 20px;">- Written confirmation or verification or map from the NM EMNRD - Mining and Mineral Division</p> <p><input type="checkbox"/> Yes <input type="checkbox"/> No</p> <p><input type="checkbox"/> NA</p> <p>Within an unstable area.</p> <p style="padding-left: 20px;">- Engineering measures incorporated into the design; NM Bureau of Geology & Mineral Resources; USGS; NM Geological Society; Topographic map</p> <p><input type="checkbox"/> Yes <input type="checkbox"/> No</p> <p><input type="checkbox"/> NA</p> <p>Within a 100-year floodplain</p> <p style="padding-left: 20px;">- FEMA map</p> <p><input type="checkbox"/> Yes <input type="checkbox"/> No</p> <p><input type="checkbox"/> NA</p>

11

Temporary Pits, Emergency Pits and Below-grade Tanks Permit Application Attachment Checklist Subsection B of 19.15.17.9 NMAC*Instructions: Each of the following items must be attached to the application. Please indicate, by a check mark in the box, that the documents are attached.*

- ☐ Hydrogeologic Report (Below-grade Tanks) - based upon the requirements of Paragraph (4) of Subsection B of 19.15.17.9 NMAC
- ☐ Hydrogeologic Data (Temporary and Emergency Pits) - based upon the requirements of Paragraph (2) of Subsection B of 19.15.17.9 NMAC
- ☐ Siting Criteria Compliance Demonstrations - based upon the appropriate requirements of 19.15.17.10 NMAC
- ☐ Design Plan - based upon the appropriate requirements of 19.15.17.11 NMAC
- ☐ Operating and Maintenance Plan - based upon the appropriate requirements of 19.15.17.12 NMAC
- ☐ Closure Plan (Please complete Boxes 14 through 18, if applicable) - based upon the appropriate requirements of Subsection C of 19.15.17.9 NMAC and 19.15.17.13 NMAC

☐ Previously Approved Design (attach copy of design) API _____ or Permit _____

12

Closed-loop Systems Permit Application Attachment Checklist: Subsection B of 19.15.17.9 NMAC*Instructions: Each of the following items must be attached to the application. Please indicate, by a check mark in the box, that the documents are attached.*

- ☐ Geologic and Hydrogeologic Data (only for on-site closure) - based upon the requirements of Paragraph (3) of Subsection B of 19.15.17.9 NMAC
- ☐ Siting Criteria Compliance Demonstrations (only for on-site closure) - based upon the appropriate requirements of 19.15.17.10 NMAC
- ☐ Design Plan - based upon the appropriate requirements of 19.15.17.11 NMAC
- ☐ Operating and Maintenance Plan - based upon the appropriate requirements of 19.15.17.12 NMAC
- ☐ Closure Plan (Please complete Boxes 14 through 18, if applicable) - based upon the appropriate requirements of Subsection C of 19.15.17.9 NMAC and 19.15.17.13 NMAC

☐ Previously Approved Design (attach copy of design) API _____

☐ Previously Approved Operating and Maintenance Plan API _____

13

Permanent Pits Permit Application Checklist: Subsection B of 19.15.17.9 NMAC*Instructions: Each of the following items must be attached to the application. Please indicate, by a check mark in the box, that the documents are attached.*

- ☐ Hydrogeologic Report - based upon the requirements of Paragraph (I) of Subsection B of 19.15.17.9 NMAC
- ☐ Siting Criteria Compliance Demonstrations - based upon the appropriate requirements of 19.15.17.10 NMAC
- ☐ Climatological Factors Assessment
- ☐ Certified Engineering Design Plans - based upon the appropriate requirements of 19.15.17.11 NMAC
- ☐ Dike Protection and Structural Integrity Design: based upon the appropriate requirements of 19.15.17.11 NMAC
- ☐ Leak Detection Design - based upon the appropriate requirements of 19.15.17.11 NMAC
- ☐ Liner Specifications and Compatibility Assessment - based upon the appropriate requirements of 19.15.17.11 NMAC
- ☐ Quality Control/Quality Assurance Construction and Installation Plan
- ☐ Operating and Maintenance Plan - based upon the appropriate requirements of 19.15.17.12 NMAC
- ☐ Freeboard and Overtopping Prevention Plan - based upon the appropriate requirements of 19.15.17.11 NMAC
- ☐ Nuisance or Hazardous Odors, including H₂S, Prevention Plan
- ☐ Emergency Response Plan
- ☐ Oil Field Waste Stream Characterization
- ☐ Monitoring and Inspection Plan
- ☐ Erosion Control Plan
- ☐ Closure Plan - based upon the appropriate requirements of Subsection C of 19.15.17.9 NMAC and 19.15.17.13 NMAC

14

Proposed Closure: 19.15.17.13 NMAC*Instructions: Please complete the applicable boxes, Boxes 14 through 18, in regards to the proposed closure plan.*

Type: ☐ Drilling ☐ Workover ☐ Emergency ☐ Cavitation ☐ P&A ☐ Permanent Pit ☐ Below-grade Tank ☐ Closed-loop System
☐ Alternative

Proposed Closure Method: ☐ Waste Excavation and Removal
☐ Waste Removal (Closed-loop systems only)
☐ On-site Closure Method (only for temporary pits and closed-loop systems)
☐ In-place Burial ☐ On-site Trench
☐ Alternative Closure Method (Exceptions must be submitted to the Santa Fe Environmental Bureau for consideration)

15

Waste Excavation and Removal Closure Plan Checklist (19.15.17.13 NMAC) *Instructions: Each of the following items must be attached to the closure plan.**Please indicate, by a check mark in the box, that the documents are attached.*

- ☐ Protocols and Procedures - based upon the appropriate requirements of 19.15.17.13 NMAC
- ☐ Confirmation Sampling Plan (if applicable) - based upon the appropriate requirements of Subsection F of 19.15.17.13 NMAC
- ☐ Disposal Facility Name and Permit Number (for liquids, drilling fluids and drill cuttings)
- ☐ Soil Backfill and Cover Design Specifications - based upon the appropriate requirements of Subsection H of 19.15.17.13 NMAC
- ☐ Re-vegetation Plan - based upon the appropriate requirements of Subsection I of 19.15.17.13 NMAC
- ☐ Site Reclamation Plan - based upon the appropriate requirements of Subsection G of 19.15.17.13 NMAC

Waste Removal Closure For Closed-loop Systems That Utilize Above Ground Steel Tanks or Haul-off Bins Only:(19.15.17.13.D NMAC)

Instructions: Please identify the facility or facilities for the disposal of liquids, drilling fluids and drill cuttings. Use attachment if more than two facilities are required.

Disposal Facility Name: _____ Disposal Facility Permit #: _____

Disposal Facility Name: _____ Disposal Facility Permit #: _____

Will any of the proposed closed-loop system operations and associated activities occur on or in areas that *will not* be used for future service and

☐ Yes (If yes, please provide the information) ☐ No

Required for impacted areas which will not be used for future service and operations:

☐ Soil Backfill and Cover Design Specification - based upon the appropriate requirements of Subsection H of 19.15.17.13 NMAC

☐ Re-vegetation Plan - based upon the appropriate requirements of Subsection I of 19.15.17.13 NMAC

☐ Site Reclamation Plan - based upon the appropriate requirements of Subsection G of 19.15.17.13 NMAC

Siting Criteria (Regarding on-site closure methods only: 19.15.17.10 NMAC

Instructions: Each siting criteria requires a demonstration of compliance in the closure plan. Recommendations of acceptable source material are provided below. Requests regarding changes to certain siting criteria may require administrative approval from the appropriate district office or may be considered an exception which must be submitted to the Santa Fe Environmental Bureau office for consideration of approval. Justifications and/or demonstrations of equivalency are required. Please refer to 19.15.17.10 NMAC for guidance.

Ground water is less than 50 feet below the bottom of the buried waste.

- NM Office of the State Engineer - iWATERS database search; USGS: Data obtained from nearby wells

☐ Yes ☐ No

☐ N/A

Ground water is between 50 and 100 feet below the bottom of the buried waste

- NM Office of the State Engineer - iWATERS database search; USGS: Data obtained from nearby wells

☐ Yes ☐ No

☐ N/A

Ground water is more than 100 feet below the bottom of the buried waste.

- NM Office of the State Engineer - iWATERS database search; USGS: Data obtained from nearby wells

☐ Yes ☐ No

☐ N/A

Within 300 feet of a continuously flowing watercourse, or 200 feet of any other significant watercourse or lakebed, sinkhole, or playa lake (measured from the ordinary high-water mark).

- Topographic map; Visual inspection (certification) of the proposed site

☐ Yes ☐ No

Within 300 feet from a permanent residence, school, hospital, institution, or church in existence at the time of initial application.

- Visual inspection (certification) of the proposed site; Aerial photo; satellite image

☐ Yes ☐ No

☐ Yes ☐ No

Within 500 horizontal feet of a private, domestic fresh water well or spring that less than five households use for domestic or stock watering purposes, or within 1000 horizontal feet of any other fresh water well or spring, in existence at the time of the initial application.

- NM Office of the State Engineer - iWATERS database; Visual inspection (certification) of the proposed site

☐ Yes ☐ No

Within incorporated municipal boundaries or within a defined municipal fresh water well field covered under a municipal ordinance adopted pursuant to NMSA 1978, Section 3-27-3, as amended.

- Written confirmation or verification from the municipality; Written approval obtained from the municipality

☐ Yes ☐ No

Within 500 feet of a wetland

- US Fish and Wildlife Wetland Identification map; Topographic map; Visual inspection (certification) of the proposed site

☐ Yes ☐ No

Within the area overlying a subsurface mine.

- Written confirmation or verification or map from the NM EMNRD-Mining and Mineral Division

☐ Yes ☐ No

Within an unstable area.

- Engineering measures incorporated into the design; NM Bureau of Geology & Mineral Resources; USGS; NM Geological Society; Topographic map

☐ Yes ☐ No

Within a 100-year floodplain.

- FEMA map

☐ Yes ☐ No

On-Site Closure Plan Checklist: (19.15.17.13 NMAC) *Instructions: Each of the following items must be attached to the closure plan. Please indicate, by a check mark in the box, that the documents are attached.*

☐ Siting Criteria Compliance Demonstrations - based upon the appropriate requirements of 19.15.17.10 NMAC

☐ Proof of Surface Owner Notice - based upon the appropriate requirements of Subsection F of 19.15.17.13 NMAC

☐ Construction/Design Plan of Burial Trench (if applicable) based upon the appropriate requirements of 19.15.17.11 NMAC

☐ Construction/Design Plan of Temporary Pit (for in place burial of a drying pad) - based upon the appropriate requirements of 19.15.17.11 NMAC

☐ Protocols and Procedures - based upon the appropriate requirements of 19.15.17.13 NMAC

☐ Confirmation Sampling Plan (if applicable) - based upon the appropriate requirements of Subsection F of 19.15.17.13 NMAC

☐ Waste Material Sampling Plan - based upon the appropriate requirements of Subsection F of 19.15.17.13 NMAC

☐ Disposal Facility Name and Permit Number (for liquids, drilling fluids and drill cuttings or in case on-site closure standards cannot be achieved)

☐ Soil Cover Design - based upon the appropriate requirements of Subsection H of 19.15.17.13 NMAC

☐ Re-vegetation Plan - based upon the appropriate requirements of Subsection I of 19.15.17.13 NMAC

☐ Site Reclamation Plan - based upon the appropriate requirements of Subsection G of 19.15.17.13 NMAC

19

Operator Application Certification:

I hereby certify that the information submitted with this application is true, accurate and complete to the best of my knowledge and belief.

Name (Print): _____ Title: _____
 Signature: _____ Date: _____
 e-mail address: _____ Telephone: _____

20

OCD Approval: ☐ Permit Application (including closure plan) ☒ Closure Plan (only) ☐ OCD Conditions (see attachment)

OCD Representative Signature: _____ Approval Date: 2/7/11
 Title: Compliance Officer OCD Permit Number: _____

21

Closure Report (required within 60 days of closure completion): Subsection K of 19.15.17.13 NMAC

Instructions: Operators are required to obtain an approved closure plan prior to implementing any closure activities and submitting the closure report. The closure report is required to be submitted to the division within 60 days of the completion of the closure activities. Please do not complete this section of the form until an approved closure plan has been obtained and the closure activities have been completed.

☒ Closure Completion Date: May 26, 2010

22

Closure Method:

☐ Waste Excavation and Removal ☒ On-site Closure Method ☐ Alternative Closure Method ☐ Waste Removal (Closed-loop systems only)
☐ If different from approved plan, please explain.

23

Closure Report Regarding Waste Removal Closure For Closed-loop Systems That Utilize Above Ground Steel Tanks or Haul-off Bins Only:

Instructions: Please identify the facility or facilities for where the liquids, drilling fluids and drill cuttings were disposed. Use attachment if more than two facilities were utilized.

Disposal Facility Name: _____ Disposal Facility Permit Number: _____
 Disposal Facility Name: _____ Disposal Facility Permit Number: _____

Were the closed-loop system operations and associated activities performed on or in areas that *will not* be used for future service and operations?

☐ Yes (If yes, please demonstrate compliance to the items below) ☐ No

Required for impacted areas which will not be used for future service and operations:

☐ Site Reclamation (Photo Documentation)
☐ Soil Backfilling and Cover Installation
☐ Re-vegetation Application Rates and Seeding Technique

24

Closure Report Attachment Checklist: Instructions: Each of the following items must be attached to the closure report. Please indicate, by a check mark in the box, that the documents are attached.

☒ Proof of Closure Notice (surface owner and division)
☒ Proof of Deed Notice (required for on-site closure)
☒ Plot Plan (for on-site closures and temporary pits)
☒ Confirmation Sampling Analytical Results (if applicable)
☐ Waste Material Sampling Analytical Results (if applicable)
☒ Disposal Facility Name and Permit Number
☒ Soil Backfilling and Cover Installation
☒ Re-vegetation Application Rates and Seeding Technique
☒ Site Reclamation (Photo Documentation)

On-site Closure Location: Latitude: 36.662624 °N Longitude: 107.510605 °W NAD ☐ 1927 ☒ 1983

25

Operator Closure Certification:

I hereby certify that the information and attachments submitted with this closure report is true, accurate and complete to the best of my knowledge and belief. I also certify that the closure complies with all applicable closure requirements and conditions specified in the approved closure plan.

Name (Print): Marie E. Jaramillo Title: Staff/Regulatory Tech
 Signature: _____ Date: 8/9/10
 e-mail address: marie.e.jaramillo@conocophillip.com Telephone: 505-326-9865

Burlington Resources Oil Gas Company, LP
San Juan Basin
Closure Report

Lease Name: SAN JUAN 28-6 UNIT 159N

API No.: 30-039-30761

In accordance with Rule 19.15.17.13 NMAC the following information describes the closure of the temporary pit referenced above. All proper documentation regarding closure activities is being included with the C-144. The temporary pit for this location was constructed and location drilled before June 16, 2008 (effective date for Rule 19.15.17). While closure of the temporary pit did fall within the rule some dates for submittals are after the rig release date.

- Details on Capping and Covering, where applicable. **(See report)**
- Plot Plan (Pit Diagram) **(Included as an attachment)**
- Inspection Reports **(Included as an attachment)**
- Sampling Results **(Included as an attachment)**
- C-105 **(Included as an attachment)**
- Copy of Deed Notice will be filed with County Clerk **(Not required on Federal, State, or Tribal land as stated by FAQ dated October 30, 2008)**

General Plan:

1. All free standing liquids will be removed at the start of the pit closure process from the pit and disposed of in a division-approved facility or recycle, reuse or reclaim the liquids in a manner that the appropriate division district office approves.

All recovered liquids were disposed of at Basin Disposal (Permit #NM-01-005) and any sludge or soil required to be removed to facilitate closure was hauled to Envirotech Land Farm (Permit #NM-01-011) and JFJ Landfarm % IEI (Permit #NM-01-0010B).

2. The preferred method of closure for all temporary pits will be on-site burial, assuming that all the criteria listed in sub-section (B) of 19.15.17.13 are met.

The pit was closed using onsite burial.

3. The surface owner shall be notified of BR's closing of the temporary pit as per the approved closure plan using certified mail, return receipt requested.

The closure process notification to the landowner was sent via email. (See Attached)(Well located on Federal Land, certified mail is not required for Federal Land per BLM/OCD MOU.)

4. Within 6 months of the Rig Off status occurring BR will ensure that temporary pits are closed, re-contoured, and reseeded.

Provision 4 of the closure plan requirements were not met due to rig move off date as noted on C-105 which was prior to pit rule change. Burlington will ensure compliance with this rule in the future.

5. Notice of Closure will be given to the Aztec Division office between 72 hours and one week of closure via email, or verbally. The notification of closure will include the following:
 - i. Operator's name
 - ii. Location by Unit Letter, Section, Township, and Range. Well name and API number.

Notification is attached.

6. Liner of temporary pit shall be removed above "mud level" after stabilization. Removal of liner will consist of manually or mechanically cutting liner at mud level and removing all remaining liner. Care will be taken to remove "All" of the liner i.e., edges of liner entrenched or buried. All excessive liner will be disposed of at a licensed disposal facility.

Liner of temporary pit was removed above "mud level" after stabilization. Removal of the liner consisted of manually cutting liner at mud level and removing all remaining liner. Care was taken to remove "ALL" of the liner i.e., edges of liner entrenched or buried. All excessive liner was disposed of at a licensed disposal facility, (San Juan County Landfill).

7. Pit contents shall be mixed with non-waste containing, earthen material in order to achieve the solidification process. The solidification process will be accomplished using a combination of natural drying and mechanically mixing. Pit contents will be mixed with non-waste, earthen material to a consistency that is deemed a safe and stable. The mixing ratio shall not exceed 3 parts clean soil to 1 part pit contents.

Burlington mixed the Pit contents with non-waste containing, earthen material in order to achieve the solidification process. The solidification process was accomplished by using a combination of natural drying and mechanically mixing. Pit contents were mixed with non-waste, earthen material to a consistency that is deemed as safe and stable. The mixing ratio consisted of approximately 3 parts clean soil to 1 part pit contents.

8. A five point composite sample will be taken of the pit using sampling tools and all samples tested per Subsection B of 19.15.17.13(B)(1)(b). In the event that the criteria are not met, all contents will be handled per Subparagraph (a) of Paragraph (1) of Subsection B of 19.15.17.13 i.e., Dig and haul.

A five point composite sample was taken of the pit using sampling tools and all samples tested per Subsection B of 19.15.17.1 3(B)(1)(b). (Sample results attached).

Components	Tests Method	Limit (mg/Kg)	Results
Benzene	EPA SW-846 8021B or 8260B	0.2	10.1 ug/kg
BTEX	EPA SW-846 8021B or 8260B	50	356 ug/kG
TPH	EPA SW-846 418.1	2500	308mg/kg
GRO/DRO	EPA SW-846 8015M	500	110 mg/Kg
Chlorides	EPA 300.1	1000/500	175 mg/L

9. Upon completion of solidification and testing standards being passed, the pit area will be backfilled with compacted, non-waste containing, earthen material. A minimum of four feet of cover shall be achieved and the cover shall include one foot of suitable material to establish vegetation at the site, or the background thickness of topsoil, whichever is greater. If standard testing fails BR will dig and haul all contents pursuant to 19.15.17.13.i.a. After doing such, confirmation sampling will be conducted to ensure a release has not occurred.

The pit material passed solidification and testing standards. The pit area was then backfilled with compacted, non-waste containing, earthen material. More than four feet of cover was achieved and the cover included one foot of suitable material to establish vegetation at the site.

10. During the stabilization process if the liner is ripped by equipment the Aztec OCD office will be notified within 48 hours and the liner will be repaired if possible. If the liner can not be repaired then all contents will be excavated and removed.

The integrity of the liner was not damaged in the pit closure process.

11. Dig and Haul Material will be transported to the Envirotech Land Farm located 16 miles south of Bloomfield on Angel Peak Road, CR 7175. Permit # NM010011

Dig and Haul was not required.

12. Re-contouring of location will match fit, shape, line, form and texture of the surrounding. Re-shaping will include drainage control, prevent ponding, and prevent erosion. Natural drainages will be unimpeded and water bars and/or silt traps will be placed in areas where needed to prevent erosion on a large scale. Final re-contour shall have a uniform appearance with smooth surface, fitting the natural landscape.

The pit area was re-contoured to match fit, shape, line, form and texture of the surrounding area. Re-shaping included drainage control, to prevent ponding and erosion. Natural drainages were unimpeded and water bars and/or silt traps were placed in areas where needed to prevent erosion on a large scale. Final re-contour has a uniform appearance with smooth surface, fitting the natural landscape.

13. Notification will be sent to OCD when the reclaimed area is seeded.

Provision 13 was accomplished through complying with BLM seeding requirements as allowed by the BLM/OCD MOU.

14. BR shall seed the disturbed areas the first growing season after the operator closes the pit. Seeding will be accomplished via drilling on the contour whenever practical or by other division-approved methods. BLM or Forest Service stipulated seed mixes will be used on federal lands. Vegetative cover will equal 70% of the native perennial vegetative cover (un-impacted) consisting of at least three native plant species, including at least one grass, but not including noxious weeds, and maintain that cover through two successive growing seasons. Repeat seeding or planting will be continued until successful vegetative growth occurs.

Provision 14 was accomplished through complying with BLM seeding requirements as allowed by the BLM/OCD MOU.

15. The temporary pit will be located with a steel marker, no less than four inches in diameter, cemented in a hole three feet deep in the center of the onsite burial upon the abandonment of all the wells on the pad. The marker will be flush with the ground to allow access of the active well pad and for safety concerns. The marker will include a threaded collar to be used for future abandonment. The top of the marker will contain a welded steel 12" square plate that indicates the onsite burial of the temporary pit. The plate will be easily removable and a four foot tall riser will be threaded into the top of the collar marker and welded around the base with the operator's information at the time of all wells on the pad are abandoned. The operator's information will include the following: Operator Name, Lease Name, Well Name and number, Unit Number, Section, Township, Range and an indicator that the marker is an onsite burial location.

Provision 15 was accomplished by installing a steel marker in the temporary pit, no less than four inches in diameter, cemented in a hole three feet deep in the center of the onsite burial. The marker is flush with the ground to allow access of the active well pad and for safety concerns. The top of the marker contains a welded steel 12" square plate that indicates the onsite burial of the temporary pit. The plate contains the following: Operator Name, Lease Name, Well Name and number, Unit Number, Section, Township, Range and an indicator that the marker is an onsite burial location.

The plate will be easily removable and a four foot tall riser will be threaded into the top of the collar marker and welded around the base with the following operator's information at the time of all wells on the pad are abandoned. The riser will be labeled: BR, BLM, SAN JUAN 28-6 UNIT 159N, UL-F, Sec. 18, T 28N, R 6W, API # 30-039-30761

Sessions, Tamra D

From: Sessions, Tamra D
Sent: Wednesday, May 06, 2009 12:19 PM
To: 'mark_kelly@nm.blm.gov'
Subject: Surface Owner Notification - BLM

The following wells will have a temporary pit that will be closed on-site. Please let me know if you have any questions.

San Juan 28-6 Unit 156P

San Juan 28-6 Unit 159N

San Juan 28-7 Unit 244N

San Juan 32-7 Unit 39M

Thank you,

Tamra Sessions
Staff Regulatory Technician
CONOCOPHILLIPS COMPANY / SJBU
505-326-9834
Tamra.D.Sessions@conocophillips.com

DISTRICT 1
1625 N. French Dr., Hobbs, N.M. 88240

State of New Mexico
Energy, Minerals & Natural Resources Department

Form C-102
Revised October 12, 2005

DISTRICT II
1301 West Grand Avenue, Artesia, N.M. 88210

OIL CONSERVATION DIVISION
1220 South St. Francis Dr.
Santa Fe, NM 87505

Submit to Appropriate District Office
State Lease - 4 Copies
Fee Lease - 3 Copies

DISTRICT III
1000 Rio Brazos Rd., Aztec, N.M. 87410

DISTRICT IV
1220 S. St. Francis Dr., Santa Fe, NM 87505

☐ AMENDED REPORT

WELL LOCATION AND ACREAGE DEDICATION PLAT

1 API Number		2 Pool Code		3 Pool Name MESAVERDE/DAKOTA	
4 Property Code		5 Property Name SAN JUAN 28-6 UNIT			6 Well Number 159N
7 OGRID No.		8 Operator Name BURLINGTON RESOURCES OIL & GAS COMPANY LP			9 Elevation 6635'

¹⁰ Surface Location

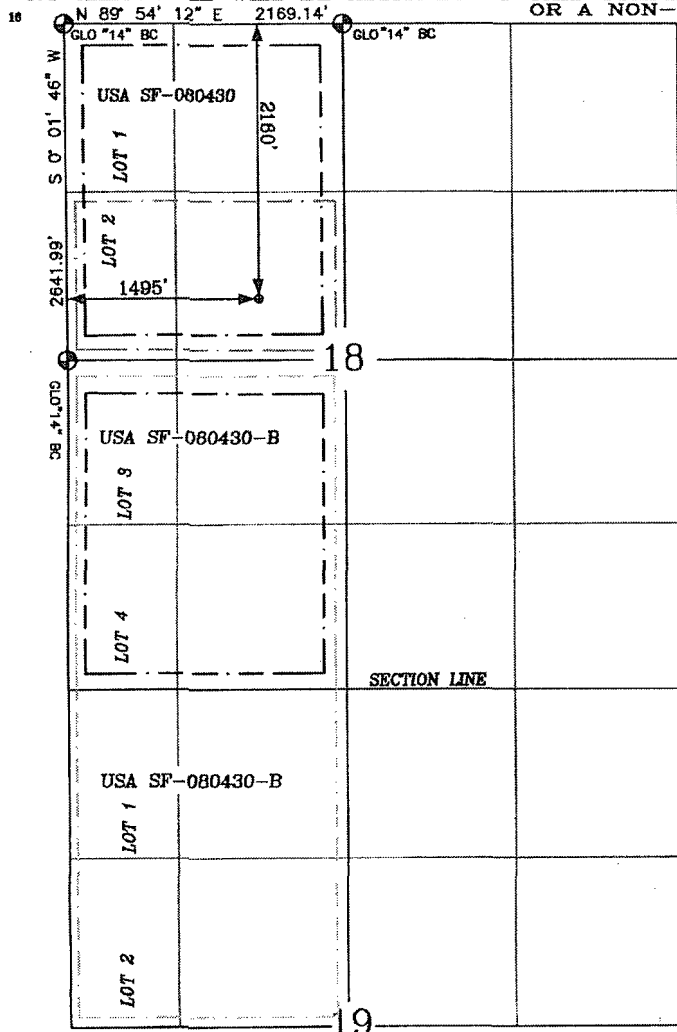
UL or lot no.	Section	Township	Range	Lot Idn	Feet from the	North/South line	Feet from the	East/West line	County
F	18	28-N	6-W		2160'	NORTH	1495'	WEST	RIO ARRIBA

¹¹ Bottom Hole Location If Different From Surface

UL or lot no.	Section	Township	Range	Lot Idn	Feet from the	North/South line	Feet from the	East/West line	County
---------------	---------	----------	-------	---------	---------------	------------------	---------------	----------------	--------

¹² Dedicated Acres MV 262.84 ACRE W/2 DK 328.37 ACRE NSP	¹³ Joint or Infill	¹⁴ Consolidation Code	¹⁵ Order No. R-2948
---	-------------------------------	----------------------------------	-----------------------------------

NO ALLOWABLE WILL BE ASSIGNED TO THIS COMPLETION UNTIL ALL INTERESTS HAVE BEEN CONSOLIDATED
OR A NON-STANDARD UNIT HAS BEEN APPROVED BY THE DIVISION



17 OPERATOR CERTIFICATION

I hereby certify that the information contained herein is true and complete to the best of my knowledge and belief, and that this organization either owns a working interest or unleased mineral interest in the land including the proposed bottom hole location or has a right to drill this well at this location pursuant to a contract with an owner of such a mineral or working interest, or to a voluntary pooling agreement or compulsory pooling order heretofore entered by the Division.

Signature

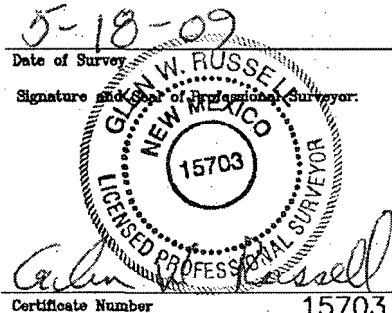
Printed Name _____

18 SURVEYOR CERTIFICATION

I hereby certify that the well location shown on this plat was plotted from field notes of actual surveys made by me or under my supervision, and that the same is true and correct to the best of my belief.

Date of Survey _____

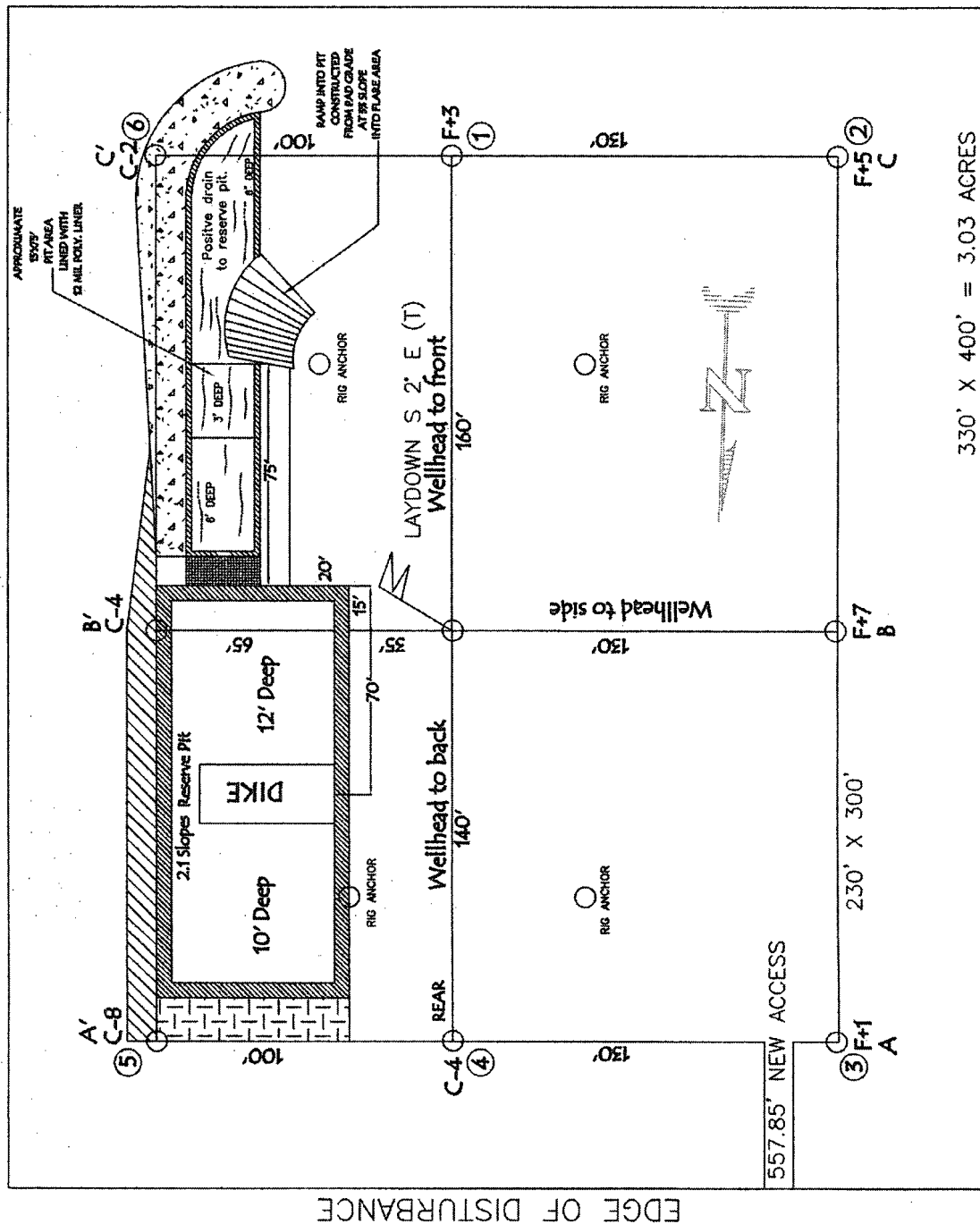
Signature and Seal of Professional Surveyor



Certificate Number

15703

BURLINGTON RESOURCES OIL & GAS COMPANY LP SAN JUAN 28-6 UNIT 159N, 2160' FNL & 1495' FWL SECTION 18, T-28-N, R-6-W, NMPM, RIO ARriba COUNTY, NM GROUND ELEVATION: 6635', DATE: MARCH 27, 2008



330' X 400' = 3.03 ACRES

LATITUDE: 36° 39' 7532" N
 LONGITUDE: 107° 30' 6106" W
 NAD 27

LATITUDE: 36° 39' 45.2" N
 LONGITUDE: 107° 30' 38.8" W
 NAD 83

NOTE: VECTOR SURVEYS IS NOT LIABLE FOR UNDERGROUND UTILITIES OR PIPELINES.
 CONTRACTOR SHOULD CALL ONE-CALL FOR LOCATION OF ANY MARKED OR UNMARKED BURIED
 PIPELINES OR CABLES ON WELL PAD AND OR ACCESS ROAD AT LEAST TWO (2) WORKING DAYS PRIOR TO CONSTRUCTION.
 RESERVE PIT DIKE, TO BE 8' ABOVE DEEP SIDE (OVERFLOW - 3' WIDE AND 1' ABOVE SHALLOW SIDE).



**EPA METHOD 8015 Modified
Nonhalogenated Volatile Organics
Total Petroleum Hydrocarbons**

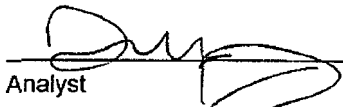
Client:	ConocoPhillips	Project #:	96052-0026
Sample ID:	Reserve Pit	Date Reported:	04-22-10
Laboratory Number:	53761	Date Sampled:	04-19-10
Chain of Custody No:	8950	Date Received:	04-19-10
Sample Matrix:	Soil	Date Extracted:	04-21-10
Preservative:	Cool	Date Analyzed:	04-21-10
Condition:	Intact	Analysis Requested:	8015 TPH

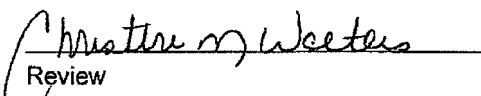
Parameter	Concentration (mg/Kg)	Det. Limit (mg/Kg)
Gasoline Range (C5 - C10)	6.3	0.2
Diesel Range (C10 - C28)	104	0.1
Total Petroleum Hydrocarbons	110	0.2

ND - Parameter not detected at the stated detection limit.

References: Method 8015B, Nonhalogenated Volatile Organics, Test Methods for Evaluating Solid Waste, SW-846, USEPA, December 1996.

Comments: **San Juan 28-6 Unit 159N**


Analyst


Review



**EPA METHOD 8015 Modified
Nonhalogenated Volatile Organics
Total Petroleum Hydrocarbons**

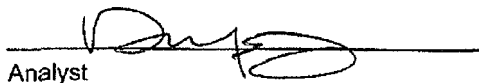
Client:	ConocoPhillips	Project #:	96052-0026
Sample ID:	Under Pit Liner	Date Reported:	04-22-10
Laboratory Number:	53762	Date Sampled:	04-19-10
Chain of Custody No:	8950	Date Received:	04-19-10
Sample Matrix:	Soil	Date Extracted:	04-21-10
Preservative:	Cool	Date Analyzed:	04-21-10
Condition:	Intact	Analysis Requested:	8015 TPH

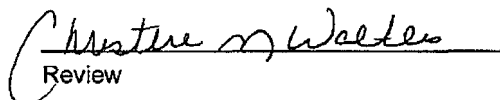
Parameter	Concentration (mg/Kg)	Det. Limit (mg/Kg)
Gasoline Range (C5 - C10)	ND	0.2
Diesel Range (C10 - C28)	ND	0.1
Total Petroleum Hydrocarbons	ND	0.2

ND - Parameter not detected at the stated detection limit.

References: Method 8015B, Nonhalogenated Volatile Organics, Test Methods for Evaluating Solid Waste, SW-846, USEPA, December 1996.

Comments: **San Juan 28-6 Unit 159N**


Analyst


Review



**EPA METHOD 8015 Modified
Nonhalogenated Volatile Organics
Total Petroleum Hydrocarbons**

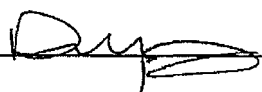
Client:	ConocoPhillips	Project #:	96052-0026
Sample ID:	Background	Date Reported:	04-22-10
Laboratory Number:	53763	Date Sampled:	04-19-10
Chain of Custody No:	8950	Date Received:	04-19-10
Sample Matrix:	Soil	Date Extracted:	04-21-10
Preservative:	Cool	Date Analyzed:	04-21-10
Condition:	Intact	Analysis Requested:	8015 TPH

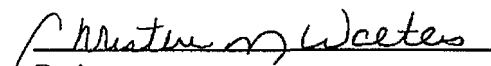
Parameter	Concentration (mg/Kg)	Det. Limit (mg/Kg)
Gasoline Range (C5 - C10)	ND	0.2
Diesel Range (C10 - C28)	ND	0.1
Total Petroleum Hydrocarbons	ND	0.2

ND - Parameter not detected at the stated detection limit.

References: Method 8015B, Nonhalogenated Volatile Organics, Test Methods for Evaluating Solid Waste, SW-846, USEPA, December 1996.

Comments: **San Juan 28-6 Unit 159N**


Analyst


Review



EPA Method 8015 Modified
Nonhalogenated Volatile Organics
Total Petroleum Hydrocarbons

Quality Assurance Report

Client:	QA/QC	Project #:	N/A
Sample ID:	04-21-10 QA/QC	Date Reported:	04-22-10
Laboratory Number:	53761	Date Sampled:	N/A
Sample Matrix:	Methylene Chloride	Date Received:	N/A
Preservative:	N/A	Date Analyzed:	04-21-10
Condition:	N/A	Analysis Requested:	TPH

	I-Cal Date	I-Cal RF	C-Cal RF	% Difference	Accept Range
Gasoline Range C5 - C10	05-07-07	1.0949E+003	1.0953E+003	0.04%	0 - 15%
Diesel Range C10 - C28	05-07-07	1.1777E+003	1.1781E+003	0.04%	0 - 15%

Blank Conc. (mg/L - mg/Kg)	Concentration	Detection Limit
Gasoline Range C5 - C10	ND	0.2
Diesel Range C10 - C28	ND	0.1
Total Petroleum Hydrocarbons	ND	0.2

Duplicate Conc. (mg/Kg)	Sample	Duplicate	% Difference	Accept Range
Gasoline Range C5 - C10	6.3	6.3	0.0%	0 - 30%
Diesel Range C10 - C28	104	103	0.6%	0 - 30%

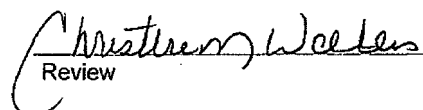
Spike Conc. (mg/Kg)	Sample	Spike Added	Spike Result	% Recovery	Accept Range
Gasoline Range C5 - C10	6.3	250	260	101%	75 - 125%
Diesel Range C10 - C28	104	250	362	102%	75 - 125%

ND - Parameter not detected at the stated detection limit.

References: Method 8015B, Nonhalogenated Volatile Organics, Test Methods for Evaluating Solid Waste, SW-846, USEPA, December 1996.

Comments: QA/QC for Samples 53761 - 53763, 53767 - 53769, and 53787 - 53790

Analyst 

Review 



EPA METHOD 8021
AROMATIC VOLATILE ORGANICS

Client:	ConocoPhillips	Project #:	96052-0026
Sample ID:	Reserve Pit	Date Reported:	04-22-10
Laboratory Number:	53761	Date Sampled:	04-19-10
Chain of Custody:	8950	Date Received:	04-19-10
Sample Matrix:	Soil	Date Analyzed:	04-21-10
Preservative:	Cool	Date Extracted:	04-21-10
Condition:	Intact	Analysis Requested:	BTEX

Parameter	Concentration (ug/Kg)	Det. Limit (ug/Kg)
Benzene	10.1	0.9
Toluene	90.6	1.0
Ethylbenzene	25.1	1.0
p,m-Xylene	177	1.2
o-Xylene	53.4	0.9
Total BTEX	356	

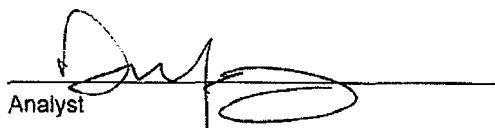
ND - Parameter not detected at the stated detection limit.

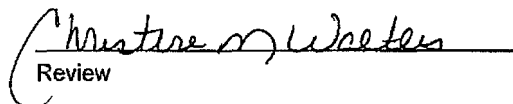
Surrogate Recoveries:	Parameter	Percent Recovery
	Fluorobenzene	83.4 %
	1,4-difluorobenzene	86.5 %
	Bromochlorobenzene	80.9 %

References: Method 5030B, Purge-and-Trap, Test Methods for Evaluating Solid Waste, SW-846, USEPA, December 1996.

Method 8021B, Aromatic Volatile Organics, Test Methods for Evaluating Solid Waste, SW-846, USEPA, December 1996.

Comments: San Juan 28-6 Unit 159N


Analyst


Review



EPA METHOD 8021
AROMATIC VOLATILE ORGANICS

Client:	ConocoPhillips	Project #:	96052-0026
Sample ID:	Under Pit Liner	Date Reported:	04-22-10
Laboratory Number:	53762	Date Sampled:	04-19-10
Chain of Custody:	8950	Date Received:	04-19-10
Sample Matrix:	Soil	Date Analyzed:	04-21-10
Preservative:	Cool	Date Extracted:	04-21-10
Condition:	Intact	Analysis Requested:	BTEX

Parameter	Concentration (ug/Kg)	Det. Limit (ug/Kg)
Benzene	ND	0.9
Toluene	ND	1.0
Ethylbenzene	ND	1.0
p,m-Xylene	ND	1.2
o-Xylene	ND	0.9
Total BTEX	ND	

ND - Parameter not detected at the stated detection limit.

Surrogate Recoveries:	Parameter	Percent Recovery
	Fluorobenzene	119 %
	1,4-difluorobenzene	105 %
	Bromochlorobenzene	94.9 %

References: Method 5030B, Purge-and-Trap, Test Methods for Evaluating Solid Waste, SW-846, USEPA, December 1996.

Method 8021B, Aromatic Volatile Organics, Test Methods for Evaluating Solid Waste, SW-846, USEPA, December 1996.

Comments: San Juan 28-6 Unit 159N

Analyst

Review



EPA METHOD 8021
AROMATIC VOLATILE ORGANICS

Client:	ConocoPhillips	Project #:	96052-0026
Sample ID:	Background	Date Reported:	04-22-10
Laboratory Number:	53763	Date Sampled:	04-19-10
Chain of Custody:	8950	Date Received:	04-19-10
Sample Matrix:	Soil	Date Analyzed:	04-21-10
Preservative:	Cool	Date Extracted:	04-21-10
Condition:	Intact	Analysis Requested:	BTEX

Parameter	Concentration (ug/Kg)	Det. Limit (ug/Kg)
Benzene	ND	0.9
Toluene	ND	1.0
Ethylbenzene	ND	1.0
p,m-Xylene	ND	1.2
o-Xylene	ND	0.9
Total BTEX	ND	

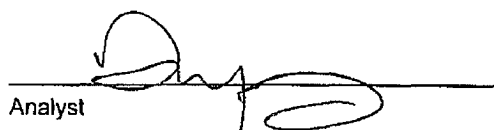
ND - Parameter not detected at the stated detection limit.

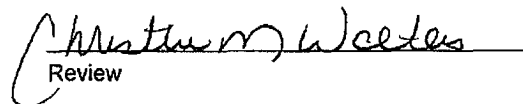
Surrogate Recoveries:	Parameter	Percent Recovery
	Fluorobenzene	106 %
	1,4-difluorobenzene	107 %
	Bromochlorobenzene	95.8 %

References: Method 5030B, Purge-and-Trap, Test Methods for Evaluating Solid Waste, SW-846, USEPA, December 1996.

Method 8021B, Aromatic Volatile Organics, Test Methods for Evaluating Solid Waste, SW-846, USEPA, December 1996.

Comments: San Juan 28-6 Unit 159N


Analyst


Review



EPA METHOD 8021
AROMATIC VOLATILE ORGANICS

Client:	N/A	Project #:	N/A
Sample ID:	04-21-BT QA/QC	Date Reported:	04-22-10
Laboratory Number:	53761	Date Sampled:	N/A
Sample Matrix:	Soil	Date Received:	N/A
Preservative:	N/A	Date Analyzed:	04-21-10
Condition:	N/A	Analysis:	BTEX

Calibration and Detection Limits (ug/L)	I-Cal RF	C-Cal RF	%Diff	Blank Conc	Detect Limit
		Accept Range 0 - 15%			
Benzene	7.1526E+005	7.1670E+005	0.2%	ND	0.1
Toluene	1.1849E+006	1.1872E+006	0.2%	ND	0.1
Ethylbenzene	1.0627E+006	1.0649E+006	0.2%	ND	0.1
p,m-Xylene	2.6577E+006	2.6631E+006	0.2%	ND	0.1
o-Xylene	1.0024E+006	1.0044E+006	0.2%	ND	0.1

Duplicate Conc (ug/Kg)	Sample	Duplicate	%Diff	Accept Range	Detect Limit
Benzene	10.1	10.1	0.0%	0 - 30%	0.9
Toluene	90.6	90.4	0.2%	0 - 30%	1.0
Ethylbenzene	25.1	25.0	0.4%	0 - 30%	1.0
p,m-Xylene	177	177	0.0%	0 - 30%	1.2
o-Xylene	53.4	53.3	0.2%	0 - 30%	0.9

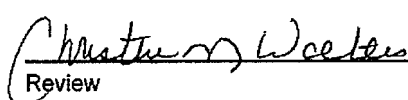
Spike Conc (ug/Kg)	Sample	Amount Spiked	Spiked Sample	Recovery	Accept Range
Benzene	10.1	50.0	49.8	82.9%	39 - 150
Toluene	90.6	50.0	139	99.0%	46 - 148
Ethylbenzene	25.1	50.0	73.2	97.5%	32 - 160
p,m-Xylene	177	100	279	101%	46 - 148
o-Xylene	53.4	50.0	95.6	92.4%	46 - 148

ND - Parameter not detected at the stated detection limit.

References: Method 5030B, Purge-and-Trap, Test Methods for Evaluating Solid Waste, SW-846, USEPA, December 1996.
Method 8021B, Aromatic and Halogenated Volatiles by Gas Chromatography Using Photoionization and/or Electrolytic Conductivity Detectors, SW-846, USEPA December 1996.

Comments: QA/QC for Samples 53761 - 53763, 53767 - 53769, and 53787 - 53790

Analyst 

Review 

Client:	ConocoPhillips	Project #:	96052-0026
Sample ID:	Reserve Pit	Date Reported:	04-22-10
Laboratory Number:	53761	Date Sampled:	04-19-10
Chain of Custody No:	8950	Date Received:	04-19-10
Sample Matrix:	Soil	Date Extracted:	04-21-10
Preservative:	Cool	Date Analyzed:	04-21-10
Condition:	Intact	Analysis Needed:	TPH-418.1

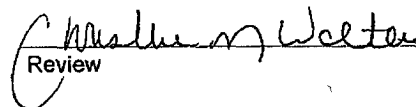
Parameter	Concentration (mg/kg)	Det. Limit (mg/kg)
Total Petroleum Hydrocarbons	308	19.7

ND = Parameter not detected at the stated detection limit.

References: Method 418.1, Petroleum Hydrocarbons, Total Recoverable, Chemical Analysis of Water and Waste, USEPA Storet No. 4551, 1978.

Comments: San Juan 28-6 Unit 159N

Analyst 

Review 

Client:	ConocoPhillips	Project #:	96052-0026
Sample ID:	Under Pit Liner	Date Reported:	04-22-10
Laboratory Number:	53762	Date Sampled:	04-19-10
Chain of Custody No:	8950	Date Received:	04-19-10
Sample Matrix:	Soil	Date Extracted:	04-21-10
Preservative:	Cool	Date Analyzed:	04-21-10
Condition:	Intact	Analysis Needed:	TPH-418.1

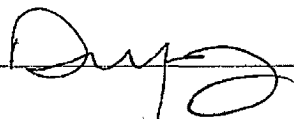
Parameter	Concentration (mg/kg)	Det. Limit (mg/kg)
Total Petroleum Hydrocarbons	49.3	19.7

ND = Parameter not detected at the stated detection limit.

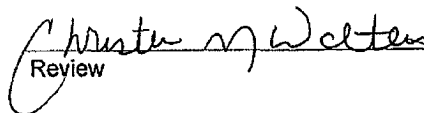
References: Method 418.1, Petroleum Hydrocarbons, Total Recoverable, Chemical Analysis of Water and Waste, USEPA Storet No. 4551, 1978.

Comments: San Juan 28-6 Unit 159N

Analyst



Review



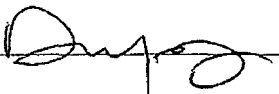
Client:	ConocoPhillips	Project #:	96052-0026
Sample ID:	Background	Date Reported:	04-22-10
Laboratory Number:	53763	Date Sampled:	04-19-10
Chain of Custody No:	8950	Date Received:	04-19-10
Sample Matrix:	Soil	Date Extracted:	04-21-10
Preservative:	Cool	Date Analyzed:	04-21-10
Condition:	Intact	Analysis Needed:	TPH-418.1

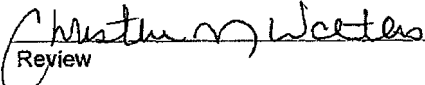
Parameter	Concentration (mg/kg)	Det. Limit (mg/kg)
Total Petroleum Hydrocarbons	91.2	19.7

ND = Parameter not detected at the stated detection limit.

References: Method 418.1, Petroleum Hydrocarbons, Total Recoverable, Chemical Analysis of Water and Waste, USEPA Storet No. 4551, 1978.

Comments: **San Juan 28-6 Unit 159N**

Analyst 

Review 



EPA METHOD 418.1
TOTAL PETROLEUM
HYDROCARBONS
QUALITY ASSURANCE REPORT

Client:	QA/QC	Project #:	N/A
Sample ID:	QA/QC	Date Reported:	04-22-10
Laboratory Number:	04-21-TPH.QA/QC 53763	Date Sampled:	N/A
Sample Matrix:	Freon-113	Date Analyzed:	04-21-10
Preservative:	N/A	Date Extracted:	04-21-10
Condition:	N/A	Analysis Needed:	TPH

Calibration	I-Cal Date	C-Cal Date	I-Cal RF	C-Cal RF	% Difference	Accept Range
	04-05-10	04-21-10	1,540	1,470	4.5%	+/- 10%

Blank Conc. (mg/Kg)	Concentration	Detection Limit
TPH	ND	19.7

Duplicate Conc. (mg/Kg)	Sample	Duplicate	% Difference	Accept Range
TPH	91.2	87.5	4.1%	+/- 30%

Spike Conc. (mg/Kg)	Sample	Spike Added	Spike Result	% Recovery	Accept Range
TPH	91.2	2,000	1,790	85.6%	80 - 120%

ND = Parameter not detected at the stated detection limit.

References: Method 418.1, Petroleum Hydrocarbons, Total Recoverable, Chemical Analysis of Water and Waste, USEPA Storet No. 4551, 1978.

Comments: QA/QC for Samples 53761 - 53763, 53767 - 53769 and 53787 - 53790.

Analyst

Review



Chloride

Client:	ConocoPhillips	Project #:	96052-0026
Sample ID:	Reserve Pit	Date Reported:	04-22-10
Lab ID#:	53761	Date Sampled:	04-19-10
Sample Matrix:	Soil	Date Received:	04-19-10
Preservative:	Cool	Date Analyzed:	04-21-10
Condition:	Intact	Chain of Custody:	8950

Parameter	Concentration (mg/Kg)
-----------	-----------------------

Total Chloride

175

Reference: U.S.E.P.A., 4500B, "Methods for Chemical Analysis of Water and Wastes", 1983.
Standard Methods For The Examination of Water And Waste Water", 18th ed., 1992.

Comments: San Juan 28-6 Unit 159N

Analyst

Review



Chloride

Client:	ConocoPhillips	Project #:	96052-0026
Sample ID:	Under Pit Liner	Date Reported:	04-22-10
Lab ID#:	53762	Date Sampled:	04-19-10
Sample Matrix:	Soil	Date Received:	04-19-10
Preservative:	Cool	Date Analyzed:	04-21-10
Condition:	Intact	Chain of Custody:	8950

Parameter	Concentration (mg/Kg)
Total Chloride	30

Reference: U.S.E.P.A., 4500B, "Methods for Chemical Analysis of Water and Wastes", 1983.
Standard Methods For The Examination of Water And Waste Water", 18th ed., 1992.

Comments: San Juan 28-6 Unit 159N

Analyst

Review

Client:	ConocoPhillips	Project #:	96052-0026
Sample ID:	Background	Date Reported:	04-22-10
Lab ID#:	53763	Date Sampled:	04-19-10
Sample Matrix:	Soil	Date Received:	04-19-10
Preservative:	Cool	Date Analyzed:	04-21-10
Condition:	Intact	Chain of Custody:	8950

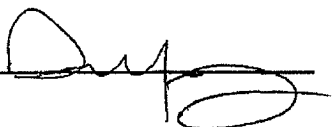
Parameter	Concentration (mg/Kg)
-----------	-----------------------

Total Chloride**10**

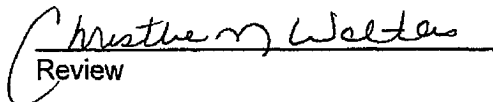
Reference: U.S.E.P.A., 4500B, "Methods for Chemical Analysis of Water and Wastes", 1983.
Standard Methods For The Examination of Water And Waste Water", 18th ed., 1992.

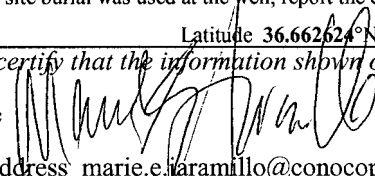
Comments: **San Juan 28-6 Unit 159N**

Analyst



Review



Submit To Appropriate District Office Two Copies District I 1625 N. French Dr., Hobbs, NM 88240 District II 1301 W. Grand Avenue, Artesia, NM 88210 District III 1000 Rio Brazos Rd., Aztec, NM 87410 District IV 1220 S. St. Francis Dr., Santa Fe, NM 87505	State of New Mexico Energy, Minerals and Natural Resources Oil Conservation Division 1220 South St. Francis Dr. Santa Fe, NM 87505	Form C-105 July 17, 2008 1. WELL API NO. 30-039-30761 2. Type of Lease <input type="checkbox"/> STATE <input type="checkbox"/> FEE <input checked="" type="checkbox"/> FED/INDIAN 3. State Oil & Gas Lease No. SF-080430								
WELL COMPLETION OR RECOMPLETION REPORT AND LOG										
4. Reason for filing: <input type="checkbox"/> COMPLETION REPORT (Fill in boxes #1 through #31 for State and Fee wells only) <input checked="" type="checkbox"/> C-144 CLOSURE ATTACHMENT (Fill in boxes #1 through #9, #15 Date Rig Released and #32 and/or #33; attach this and the plat to the C-144 closure report in accordance with 19.15.17.13.K NMAC)		5. Lease Name or Unit Agreement Name SAN JUAN 28-6 UNIT 6. Well Number: 159N								
7. Type of Completion: <input checked="" type="checkbox"/> NEW WELL <input type="checkbox"/> WORKOVER <input type="checkbox"/> DEEPENING <input type="checkbox"/> PLUGBACK <input type="checkbox"/> DIFFERENT RESERVOIR <input type="checkbox"/> OTHER										
8. Name of Operator Burlington Resources Oil Gas Company, LP		9. OGRID 14538								
10. Address of Operator PO Box 4298, Farmington, NM 87499		11. Pool name or Wildcat								
12. Location	Unit Ltr	Section	Township	Range	Lot	Feet from the	N/S Line	Feet from the	E/W Line	County
Surface:										
BH:										
13. Date Spudded	14. Date T.D. Reached	15. Date Rig Released 09/20/09		16. Date Completed (Ready to Produce)			17. Elevations (DF and RKB, RT, GR, etc.)			
18. Total Measured Depth of Well		19. Plug Back Measured Depth		20. Was Directional Survey Made?			21. Type Electric and Other Logs Run			
22. Producing Interval(s), of this completion - Top, Bottom, Name										
23. CASING RECORD (Report all strings set in well)										
CASING SIZE	WEIGHT LB./FT.		DEPTH SET		HOLE SIZE		CEMENTING RECORD		AMOUNT PULLED	
24. LINER RECORD						25. TUBING RECORD				
SIZE	TOP	BOTTOM	SACKS CEMENT	SCREEN		SIZE	DEPTH SET		PACKER SET	
26. Perforation record (interval, size, and number)						27. ACID, SHOT, FRACTURE, CEMENT, SQUEEZE, ETC.				
						DEPTH INTERVAL		AMOUNT AND KIND MATERIAL USED		
28. PRODUCTION										
Date First Production		Production Method (<i>Flowing, gas lift, pumping - Size and type pump</i>)					Well Status (<i>Prod. or Shut-in</i>)			
Date of Test	Hours Tested	Choke Size	Prod'n For Test Period	Oil - Bbl	Gas - MCF	Water - Bbl.	Gas - Oil Ratio			
Flow Tubing Press.	Casing Pressure	Calculated 24-Hour Rate	Oil - Bbl.	Gas - MCF	Water - Bbl.	Oil Gravity - API - (<i>Corr.</i>)				
29. Disposition of Gas (<i>Sold, used for fuel, vented, etc.</i>)									30. Test Witnessed By	
31. List Attachments										
32. If a temporary pit was used at the well, attach a plat with the location of the temporary pit.										
33. If an on-site burial was used at the well, report the exact location of the on-site burial:										
Latitude 36.662624°N Longitude 107.510605°W NAD <input type="checkbox"/> 1927 <input checked="" type="checkbox"/> 1983										
<i>I hereby certify that the information shown on both sides of this form is true and complete to the best of my knowledge and belief</i>										
Signature			Printed Name			Title		Date		
			Marie E. Jaramillo			Staff Regulatory Tech		8/9/2010		
E-mail Address: marie.e.jaramillo@conocophillips.com										



Pit Closure Form:

Date: 5/26/2010

Well Name: SJ 28-6 159N

Footages: 2160 FWL, 1495 FWL Unit Letter: F

Section: 18, T-28-N, R-6-W, County: R.A State: NM

Contractor Closing Pit: J.D. Ritter

****PIT MAKER STATUS (When Required):**

MARKER PLACED: _____ (DATE)

MARKER MADE BUT NOT PLACED _____ (X)(DATE)

Construction Inspector: Norman Faver Date: 5/26/2010

Inspector Signature: *Norman Faver*

Jaramillo, Marie E

From: Payne, Wendy F
Sent: Thursday, May 20, 2010 1:35 PM
To: (Brandon.Powell@state.nm.us); 'brook@crossfire-llc.com'; GRP:SJBU Regulatory; 'Isaiah Lee'; 'tevans48@msn.com'; (bko@digii.net); Mark Kelly; Robert Switzer; Sherrie Landon; Bassing, Kendal R.; Chavez, Virgil E; Elmer Perry; Faver Norman; Fred Martinez; Jared Chavez; Lowe, Terry; Payne, Wendy F; Silverman, Jason M; Spearman, Bobby E; 'Steve McGlasson'; Tally, Ethel; Becker, Joey W; Bowker, Terry D; Gordon Chenault; GRP:SJBU Production Leads; Hockett, Christy R; Johnson, Kirk L; Bassing, Kendal R.; Kennedy, Jim R; Lopez, Richard A; O'Nan, Mike J.; Peace, James T; Pierce, Richard M; Poulson, Mark E; Smith, Randall O; Spearman, Bobby E; Stamets, Steve A; Thacker, LARRY; Work, Jim A; Blair, Maxwell O; Blakley, Mac; Clark, Joni E; Farrell, Juanita R; Gillette, Steven L (Gray Surface Specialties and Consulting, Ltd.); Greer, David A; Hines, Derek J (Finney Land Co.); Maxwell, Mary Alice; McWilliams, Peggy L; Seabolt, Elmo F; Stallsmith, Mark R
Cc: 'jdritt@aol.com'
Subject: Reclamation Notice: San Juan 28-6 Unit 159N
Importance: High
Attachments: San Juan 28-6 Unit 159N.pdf

JD Ritter will move a tractor to the **San Juan 28-6 Unit 159N** to start the reclamation process on Tuesday, May 25th, 2010. Please contact Norm Faver (320-0670) if you have questions or need further assistance. Driving directions are attached.



San Juan 28-6 Unit
159N.pdf (3...

Burlington Resources Well- Network #: 10238085 - Activity Code D250 (reclamation) & D260 (pit closure)

Rio Arriba County, NM

SAN JUAN 28-6 UNIT 159N– BLM surface / BLM minerals

Twin: n/a

2160' FNL, 1495' FWL

SEC.18, T28N, R06W

Unit Letter 'F'

Lease #: USA SF-080430

Latitude: 36° 39 min 45.21600 sec N (NAD 83)

Longitude: 107° 30 min 38.81520 sec W (NAD83)

Total Acres Disturbed: 3.03 acres

Access Road: 557.85'

API #: 30-039-30761

Wendy Payne
ConocoPhillips-SJBU
505-326-9533
Wendy.F.Payne@conocophillips.com



Reclamation Form:

Date: 8/3/10

Well Name: SJ 28-6 159 N

Footages: 2160 FNL, 1495 FWL Unit Letter:

Section: 18, T-28-N, R-6-W, County: R.A State: NM

Reclamation Contractor: Ritter

Reclamation Date: 6/11/2010

Road Completion Date: 6/3/2010

Seeding Date: OSP

****PIT MARKER STATUS (When Required):**

MARKER PLACED : 6/7/2010 (DATE)

LATITUDE: 36° 39.759

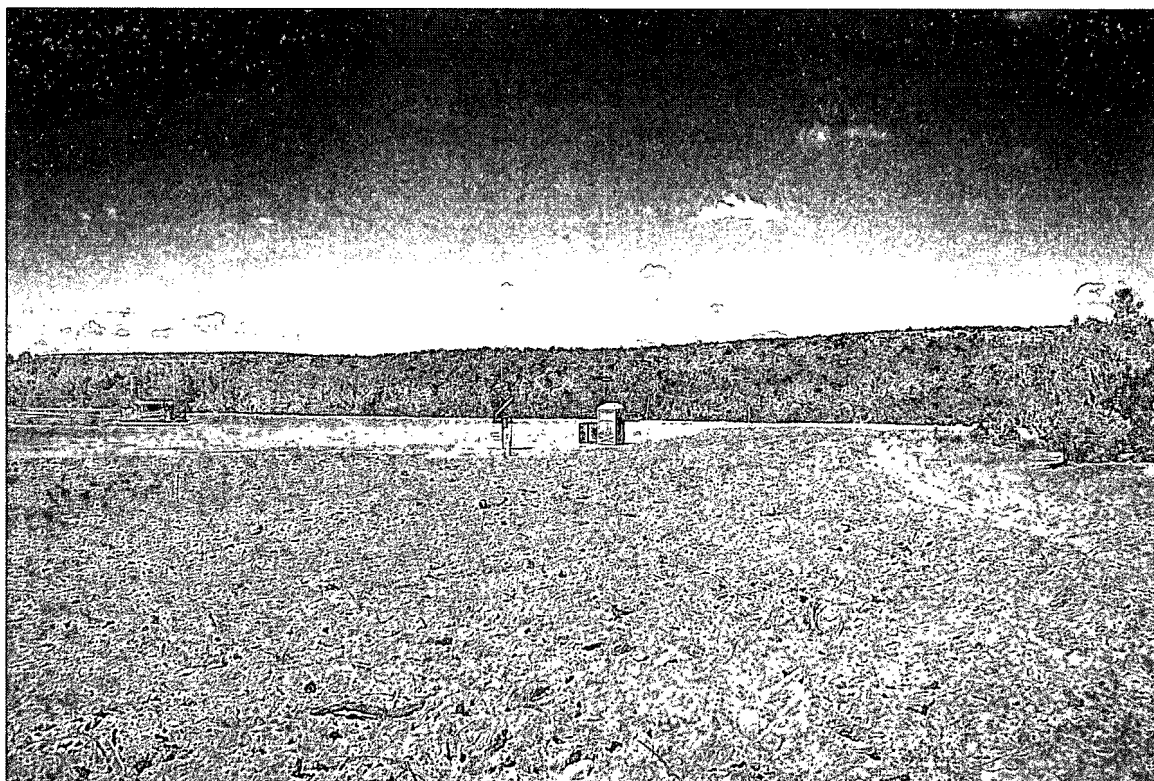
LONGITUDE: 107° 30.634

Construction Inspector: Norman Faver Date: 8/3/10

Inspector Signature: Norman Faver

BLM





WELL PAD SAFETY AND ENVIRONMENTAL CHECK LIST

WELL NAME: SAN JUAN 28-6 UNIT 159N

API#: 30-039-30761

DATE	INSPECTOR	SAFETY CHECK	LOCATION CHECK	PICTURES TAKEN	COMMENTS
11/17/09	JARED CHAVEZ	X	X	X	LOCATION LOOKS GOOD
01/08/09	NORMAN FAVER	X	X	X	
02/02/10	JARED CHAVEZ	X	X	X	FENCE NEEDS TIGHTENED - CONTACTED CROSSFIRE FOR REPAIRS
02/09/10	JARED CHAVEZ	X	X	X	FENCE NEEDS TIGHTENED - CONTACTED CROSSFIRE FOR REPAIRS
02/16/10	JARED CHAVEZ	X	X	X	PIT AND LOCATION IN GOOD CONDITION
03/03/10	ELMER PERRY	X	X	X	ROAD LOCATION RUTTED AND MUDDY; SIGN ON LOCATION
03/05/10	NORMAN FAVER	X	X	X	
03/17/10	JARED CHAVEZ				COULD NOT ACCESS LOCATION ROAD WAS TO MUDDY
03/23/10	JARED CHAVEZ	X	X	X	THERE IS A LOT OF WATER UNDERNEATH THE LINER, WATER NEEDS PULLED FROM ABOVE AND BELOW LINER - CONTACTED DAWN TRUCKING
03/25/10	ELMER PERRY	X	X	X	SIGN ON LOC. RD. AND LOC. RUTTED
04/12/10	ELMER PERRY	X	X	X	SIGN ON LOC. FENCE LOOSE. OIL ON WATER. WATER UNDER LINER

04/19/10	ELMER PERRY	X	X		
04/21/10	ELMER PERRY	X	X		SIGN ON LOC.
05/03/10	ELMER PERRY	X	X		SIGN ON LOC
05/10/10	ELMER PERRY	X	X		SIGN ON LOC
05/14/10	ELMER PERRY	X	X		SIGN ON LOC