

District I
1625 N. Beach Dr., Hobbs, NM 88240
District II
1301 W. Grand Avenue, Artesia, NM 88210
District III
1000 Rio Brazos Road, Aztec, NM 87410
District IV
1220 S. St. Francis Dr., Santa Fe, NM 87505

State of New Mexico
Energy Minerals and Natural Resources
Department
Oil Conservation Division
1220 South St. Francis Dr.
Santa Fe, NM 87505

Form C-144
July 21, 2008

For temporary pits, closed-loop systems, and below-grade tanks, submit to the appropriate NMOCD District Office.
For permanent pits and exceptions submit to the Santa Fe Environmental Bureau office and provide a copy to the appropriate NMOCD District Office.

3075
Revised on
2/11/11

Pit, Closed-Loop System, Below-Grade Tank, or
Proposed Alternative Method Permit or Closure Plan Application

Type of action: Permit of a pit, closed-loop system, below-grade tank, or proposed alternative method
 Closure of a pit, closed-loop system, below-grade tank, or proposed alternative method
 Modification to an existing permit
 Closure plan only submitted for an existing permitted or non-permitted pit, closed-loop system, below-grade tank, or proposed alternative method

Instructions: Please submit one application (Form C-144) per individual pit, closed-loop system, below-grade tank or alternative request

Please be advised that approval of this request does not relieve the operator of liability should operations result in pollution of surface water, ground water or the environment. Nor does approval relieve the operator of its responsibility to comply with any other applicable governmental authority's rules, regulations or ordinances.

1.
Operator: Williams Operating Co, LLC OGRID #: 120782
Address: PO Box 640 / 721 S Main Aztec, NM 87410
Facility or well name: Rosa Unit 162C
API Number: 3003930719 OCD Permit Number: _____
U/L or Qtr/Qtr O Section 30 Township 31N Range 5W County: Rio Arriba
Center of Proposed Design: Latitude 36.86569 °N Longitude -107.40230°W NAD: 1927 1983
Surface Owner: Federal State Private Tribal Trust or Indian Allotment

2.
 Pit: Subsection F or G of 19.15.17.11 NMAC
Temporary: Drilling Workover
 Permanent Emergency Cavitation P&A
 Lined Unlined Liner type: Thickness 20 mil LLDPE HDPE PVC Other _____
 String-Reinforced
Liner Seams: Welded Factory Other _____ Volume: 20,000 bbl Dimensions: L 140' x W 70' x D 12'

3.
 Closed-loop System: Subsection H of 19.15.17.11 NMAC
Type of Operation: P&A Drilling a new well Workover or Drilling (Applies to activities which require prior approval of a permit or notice of intent)
 Drying Pad Above Ground Steel Tanks Haul-off Bins Other _____
 Lined Unlined Liner type: Thickness _____ mil LLDPE HDPE PVC Other _____
Liner Seams: Welded Factory Other _____

4.
 Below-grade tank: Subsection I of 19.15.17.11 NMAC
Volume: _____ bbl Type of fluid: _____
Tank Construction material: _____
 Secondary containment with leak detection Visible sidewalls, liner, 6-inch lift and automatic overflow shut-off
 Visible sidewalls and liner Visible sidewalls only Other _____
Liner type: Thickness _____ mil HDPE PVC Other _____



5.
 Alternative Method:
Submittal of an exception request is required. Exceptions must be submitted to the Santa Fe Environmental Bureau office for consideration of approval.

47

6. **Fencing:** Subsection D of 19.15.17.11 NMAC (*Applies to permanent pits, temporary pits, and below-grade tanks*)

Chain link, six feet in height, two strands of barbed wire at top (*Required if located within 1000 feet of a permanent residence, school, hospital, institution or church*)

Four foot height, four strands of barbed wire evenly spaced between one and four feet

Alternate. Please specify As per BLM specifications

7. **Netting:** Subsection E of 19.15.17.11 NMAC (*Applies to permanent pits and permanent open top tanks*)

Screen Netting Other _____

Monthly inspections (If netting or screening is not physically feasible)

8. **Signs:** Subsection C of 19.15.17.11 NMAC

12"x 24", 2" lettering, providing Operator's name, site location, and emergency telephone numbers

Signed in compliance with 19.15.3.103 NMAC

9. **Administrative Approvals and Exceptions:**
 Justifications and/or demonstrations of equivalency are required. Please refer to 19.15.17 NMAC for guidance.
Please check a box if one or more of the following is requested, if not leave blank:

Administrative approval(s): Requests must be submitted to the appropriate division district or the Santa Fe Environmental Bureau office for consideration of approval.

Exception(s): Requests must be submitted to the Santa Fe Environmental Bureau office for consideration of approval.

10. **Siting Criteria (regarding permitting):** 19.15.17.10 NMAC
Instructions: The applicant must demonstrate compliance for each siting criteria below in the application. Recommendations of acceptable source material are provided below. Requests regarding changes to certain siting criteria may require administrative approval from the appropriate district office or may be considered an exception which must be submitted to the Santa Fe Environmental Bureau office for consideration of approval. Applicant must attach justification for request. Please refer to 19.15.17.10 NMAC for guidance. Siting criteria does not apply to drying pads or above-grade tanks associated with a closed-loop system.

Ground water is less than 50 feet below the bottom of the temporary pit, permanent pit, or below-grade tank. - NM Office of the State Engineer - iWATERS database search; USGS; Data obtained from nearby wells	<input type="checkbox"/> Yes <input checked="" type="checkbox"/> No
Within 300 feet of a continuously flowing watercourse, or 200 feet of any other significant watercourse or lakebed, sinkhole, or playa lake (measured from the ordinary high-water mark). - Topographic map; Visual inspection (certification) of the proposed site	<input type="checkbox"/> Yes <input checked="" type="checkbox"/> No
Within 300 feet from a permanent residence, school, hospital, institution, or church in existence at the time of initial application. (Applies to temporary, emergency, or cavitation pits and below-grade tanks) - Visual inspection (certification) of the proposed site; Aerial photo; Satellite image	<input type="checkbox"/> Yes <input checked="" type="checkbox"/> No <input type="checkbox"/> NA
Within 1000 feet from a permanent residence, school, hospital, institution, or church in existence at the time of initial application. (Applies to permanent pits) - Visual inspection (certification) of the proposed site; Aerial photo; Satellite image	<input type="checkbox"/> Yes <input type="checkbox"/> No <input checked="" type="checkbox"/> NA
Within 500 horizontal feet of a private, domestic fresh water well or spring that less than five households use for domestic or stock watering purposes, or within 1000 horizontal feet of any other fresh water well or spring, in existence at the time of initial application. - NM Office of the State Engineer - iWATERS database search; Visual inspection (certification) of the proposed site	<input type="checkbox"/> Yes <input checked="" type="checkbox"/> No
Within incorporated municipal boundaries or within a defined municipal fresh water well field covered under a municipal ordinance adopted pursuant to NMSA 1978, Section 3-27-3, as amended. - Written confirmation or verification from the municipality; Written approval obtained from the municipality	<input type="checkbox"/> Yes <input checked="" type="checkbox"/> No
Within 500 feet of a wetland. - US Fish and Wildlife Wetland Identification map; Topographic map; Visual inspection (certification) of the proposed site	<input type="checkbox"/> Yes <input checked="" type="checkbox"/> No
Within the area overlying a subsurface mine. - Written confirmation or verification or map from the NM EMNRD-Mining and Mineral Division	<input type="checkbox"/> Yes <input checked="" type="checkbox"/> No
Within an unstable area. - Engineering measures incorporated into the design; NM Bureau of Geology & Mineral Resources; USGS; NM Geological Society; Topographic map	<input type="checkbox"/> Yes <input checked="" type="checkbox"/> No
Within a 100-year floodplain. - FEMA map	<input type="checkbox"/> Yes <input checked="" type="checkbox"/> No

11.
Temporary Pits, Emergency Pits, and Below-grade Tanks Permit Application Attachment Checklist: Subsection B of 19.15.17.9 NMAC
Instructions: Each of the following items must be attached to the application. Please indicate, by a check mark in the box, that the documents are attached.

Hydrogeologic Report (Below-grade Tanks) - based upon the requirements of Paragraph (4) of Subsection B of 19.15.17.9 NMAC
 Hydrogeologic Data (Temporary and Emergency Pits) - based upon the requirements of Paragraph (2) of Subsection B of 19.15.17.9 NMAC
 Siting Criteria Compliance Demonstrations - based upon the appropriate requirements of 19.15.17.10 NMAC
 Design Plan - based upon the appropriate requirements of 19.15.17.11 NMAC
 Operating and Maintenance Plan - based upon the appropriate requirements of 19.15.17.12 NMAC
 Closure Plan (Please complete Boxes 14 through 18, if applicable) - based upon the appropriate requirements of Subsection C of 19.15.17.9 NMAC and 19.15.17.13 NMAC

Previously Approved Design (attach copy of design) API Number: _____ or Permit Number: _____

12.
Closed-loop Systems Permit Application Attachment Checklist: Subsection B of 19.15.17.9 NMAC
Instructions: Each of the following items must be attached to the application. Please indicate, by a check mark in the box, that the documents are attached.

Geologic and Hydrogeologic Data (only for on-site closure) - based upon the requirements of Paragraph (3) of Subsection B of 19.15.17.9
 Siting Criteria Compliance Demonstrations (only for on-site closure) - based upon the appropriate requirements of 19.15.17.10 NMAC
 Design Plan - based upon the appropriate requirements of 19.15.17.11 NMAC
 Operating and Maintenance Plan - based upon the appropriate requirements of 19.15.17.12 NMAC
 Closure Plan (Please complete Boxes 14 through 18, if applicable) - based upon the appropriate requirements of Subsection C of 19.15.17.9 NMAC and 19.15.17.13 NMAC

Previously Approved Design (attach copy of design) API Number: _____

Previously Approved Operating and Maintenance Plan API Number: _____ *(Applies only to closed-loop system that use above ground steel tanks or haul-off bins and propose to implement waste removal for closure)*

13.
Permanent Pits Permit Application Checklist: Subsection B of 19.15.17.9 NMAC
Instructions: Each of the following items must be attached to the application. Please indicate, by a check mark in the box, that the documents are attached.

Hydrogeologic Report - based upon the requirements of Paragraph (1) of Subsection B of 19.15.17.9 NMAC
 Siting Criteria Compliance Demonstrations - based upon the appropriate requirements of 19.15.17.10 NMAC
 Climatological Factors Assessment
 Certified Engineering Design Plans - based upon the appropriate requirements of 19.15.17.11 NMAC
 Dike Protection and Structural Integrity Design - based upon the appropriate requirements of 19.15.17.11 NMAC
 Leak Detection Design - based upon the appropriate requirements of 19.15.17.11 NMAC
 Liner Specifications and Compatibility Assessment - based upon the appropriate requirements of 19.15.17.11 NMAC
 Quality Control/Quality Assurance Construction and Installation Plan
 Operating and Maintenance Plan - based upon the appropriate requirements of 19.15.17.12 NMAC
 Freeboard and Overtopping Prevention Plan - based upon the appropriate requirements of 19.15.17.11 NMAC
 Nuisance or Hazardous Odors, including H₂S, Prevention Plan
 Emergency Response Plan
 Oil Field Waste Stream Characterization
 Monitoring and Inspection Plan
 Erosion Control Plan
 Closure Plan - based upon the appropriate requirements of Subsection C of 19.15.17.9 NMAC and 19.15.17.13 NMAC

14.
Proposed Closure: 19.15.17.13 NMAC
Instructions: Please complete the applicable boxes, Boxes 14 through 18, in regards to the proposed closure plan.

Type: Drilling Workover Emergency Cavitation P&A Permanent Pit Below-grade Tank Closed-loop System
 Alternative

Proposed Closure Method: Waste Excavation and Removal
 Waste Removal (Closed-loop systems only)
 On-site Closure Method (Only for temporary pits and closed-loop systems)
 In-place Burial On-site Trench Burial
 Alternative Closure Method (Exceptions must be submitted to the Santa Fe Environmental Bureau for consideration)

15.
Waste Excavation and Removal Closure Plan Checklist: (19.15.17.13 NMAC) *Instructions: Each of the following items must be attached to the closure plan. Please indicate, by a check mark in the box, that the documents are attached.*

Protocols and Procedures - based upon the appropriate requirements of 19.15.17.13 NMAC
 Confirmation Sampling Plan (if applicable) - based upon the appropriate requirements of Subsection F of 19.15.17.13 NMAC
 Disposal Facility Name and Permit Number (for liquids, drilling fluids and drill cuttings)
 Soil Backfill and Cover Design Specifications - based upon the appropriate requirements of Subsection H of 19.15.17.13 NMAC
 Re-vegetation Plan - based upon the appropriate requirements of Subsection I of 19.15.17.13 NMAC
 Site Reclamation Plan - based upon the appropriate requirements of Subsection G of 19.15.17.13 NMAC

16.

Waste Removal Closure For Closed-loop Systems That Utilize Above Ground Steel Tanks or Haul-off Bins Only: (19.15.17.13.D NMAC)

Instructions: Please identify the facility or facilities for the disposal of liquids, drilling fluids and drill cuttings. Use attachment if more than two facilities are required.

Disposal Facility Name: _____ Disposal Facility Permit Number: _____

Disposal Facility Name: _____ Disposal Facility Permit Number: _____

Will any of the proposed closed-loop system operations and associated activities occur on or in areas that *will not* be used for future service and operations?

Yes (If yes, please provide the information below) No

Required for impacted areas which will not be used for future service and operations:

Soil Backfill and Cover Design Specifications - based upon the appropriate requirements of Subsection H of 19.15.17.13 NMAC

Re-vegetation Plan - based upon the appropriate requirements of Subsection I of 19.15.17.13 NMAC

Site Reclamation Plan - based upon the appropriate requirements of Subsection G of 19.15.17.13 NMAC

17.

Siting Criteria (regarding on-site closure methods only): 19.15.17.10 NMAC

Instructions: Each siting criteria requires a demonstration of compliance in the closure plan. Recommendations of acceptable source material are provided below. Requests regarding changes to certain siting criteria may require administrative approval from the appropriate district office or may be considered an exception which must be submitted to the Santa Fe Environmental Bureau office for consideration of approval. Justifications and/or demonstrations of equivalency are required. Please refer to 19.15.17.10 NMAC for guidance.

Ground water is less than 50 feet below the bottom of the buried waste. - NM Office of the State Engineer - iWATERS database search; USGS; Data obtained from nearby wells	<input type="checkbox"/> Yes <input checked="" type="checkbox"/> No <input type="checkbox"/> NA
Ground water is between 50 and 100 feet below the bottom of the buried waste - NM Office of the State Engineer - iWATERS database search; USGS; Data obtained from nearby wells	<input type="checkbox"/> Yes <input checked="" type="checkbox"/> No <input type="checkbox"/> NA
Ground water is more than 100 feet below the bottom of the buried waste. - NM Office of the State Engineer - iWATERS database search; USGS; Data obtained from nearby wells	<input checked="" type="checkbox"/> Yes <input type="checkbox"/> No <input type="checkbox"/> NA
Within 300 feet of a continuously flowing watercourse, or 200 feet of any other significant watercourse or lakebed, sinkhole, or playa lake (measured from the ordinary high-water mark). - Topographic map; Visual inspection (certification) of the proposed site	<input type="checkbox"/> Yes <input checked="" type="checkbox"/> No
Within 300 feet from a permanent residence, school, hospital, institution, or church in existence at the time of initial application. - Visual inspection (certification) of the proposed site; Aerial photo; Satellite image	<input type="checkbox"/> Yes <input checked="" type="checkbox"/> No
Within 500 horizontal feet of a private, domestic fresh water well or spring that less than five households use for domestic or stock watering purposes, or within 1000 horizontal feet of any other fresh water well or spring, in existence at the time of initial application. - NM Office of the State Engineer - iWATERS database; Visual inspection (certification) of the proposed site	<input type="checkbox"/> Yes <input checked="" type="checkbox"/> No
Within incorporated municipal boundaries or within a defined municipal fresh water well field covered under a municipal ordinance adopted pursuant to NMSA 1978, Section 3-27-3, as amended. - Written confirmation or verification from the municipality; Written approval obtained from the municipality	<input type="checkbox"/> Yes <input checked="" type="checkbox"/> No
Within 500 feet of a wetland. - US Fish and Wildlife Wetland Identification map; Topographic map; Visual inspection (certification) of the proposed site	<input type="checkbox"/> Yes <input checked="" type="checkbox"/> No
Within the area overlying a subsurface mine. - Written confirmation or verification or map from the NM EMNRD-Mining and Mineral Division	<input type="checkbox"/> Yes <input checked="" type="checkbox"/> No
Within an unstable area. - Engineering measures incorporated into the design; NM Bureau of Geology & Mineral Resources; USGS; NM Geological Society; Topographic map	<input type="checkbox"/> Yes <input checked="" type="checkbox"/> No
Within a 100-year floodplain. - FEMA map	<input type="checkbox"/> Yes <input checked="" type="checkbox"/> No

18.

On-Site Closure Plan Checklist: (19.15.17.13 NMAC) **Instructions:** Each of the following items must be attached to the closure plan. Please indicate, by a check mark in the box, that the documents are attached.

- Siting Criteria Compliance Demonstrations - based upon the appropriate requirements of 19.15.17.10 NMAC
- Proof of Surface Owner Notice - based upon the appropriate requirements of Subsection F of 19.15.17.13 NMAC
- Construction/Design Plan of Burial Trench (if applicable) based upon the appropriate requirements of 19.15.17.11 NMAC
- Construction/Design Plan of Temporary Pit (for in-place burial of a drying pad) - based upon the appropriate requirements of 19.15.17.11 NMAC
- Protocols and Procedures - based upon the appropriate requirements of 19.15.17.13 NMAC
- Confirmation Sampling Plan (if applicable) - based upon the appropriate requirements of Subsection F of 19.15.17.13 NMAC
- Waste Material Sampling Plan - based upon the appropriate requirements of Subsection F of 19.15.17.13 NMAC
- Disposal Facility Name and Permit Number (for liquids, drilling fluids and drill cuttings or in case on-site closure standards cannot be achieved)
- Soil Cover Design - based upon the appropriate requirements of Subsection H of 19.15.17.13 NMAC
- Re-vegetation Plan - based upon the appropriate requirements of Subsection I of 19.15.17.13 NMAC
- Site Reclamation Plan - based upon the appropriate requirements of Subsection G of 19.15.17.13 NMAC

19. **Operator Application Certification:**
 I hereby certify that the information submitted with this application is true, accurate and complete to the best of my knowledge and belief.

Name (Print): _____ Title: _____

Signature: _____ Date: _____

e-mail address: _____ Telephone: _____

20. **OCD Approval:** Permit Application (including closure plan) Closure Plan (only) OCD Conditions (see attachment)

OCD Representative Signature: [Signature] Approval Date: 2/18/11

Title: Campaign Officer OCD Permit Number: _____

21. **Closure Report (required within 60 days of closure completion):** Subsection K of 19.15.17.13 NMAC
Instructions: Operators are required to obtain an approved closure plan prior to implementing any closure activities and submitting the closure report. The closure report is required to be submitted to the division within 60 days of the completion of the closure activities. Please do not complete this section of the form until an approved closure plan has been obtained and the closure activities have been completed.

Closure Completion Date: 8/14/09

22. **Closure Method:**

Waste Excavation and Removal On-Site Closure Method Alternative Closure Method Waste Removal (Closed-loop systems only)

If different from approved plan, please explain.

23. **Closure Report Regarding Waste Removal Closure For Closed-loop Systems That Utilize Above Ground Steel Tanks or Haul-off Bins Only:**
Instructions: Please identify the facility or facilities for where the liquids, drilling fluids and drill cuttings were disposed. Use attachment if more than two facilities were utilized.

Disposal Facility Name: _____ Disposal Facility Permit Number: _____

Disposal Facility Name: _____ Disposal Facility Permit Number: _____

Were the closed-loop system operations and associated activities performed on or in areas that will not be used for future service and operations?
 Yes (If yes, please demonstrate compliance to the items below) No

Required for impacted areas which will not be used for future service and operations:

Site Reclamation (Photo Documentation)
 Soil Backfilling and Cover Installation
 Re-vegetation Application Rates and Seeding Technique

24. **Closure Report Attachment Checklist:** *Instructions: Each of the following items must be attached to the closure report. Please indicate, by a check mark in the box, that the documents are attached.*

Proof of Closure Notice (surface owner and division)
 Proof of Deed Notice (required for on-site closure)
 Plot Plan (for on-site closures and temporary pits)
 Confirmation Sampling Analytical Results (if applicable)
 Waste Material Sampling Analytical Results (required for on-site closure)
 Disposal Facility Name and Permit Number
 Soil Backfilling and Cover Installation
 Re-vegetation Application Rates and Seeding Technique
 Site Reclamation (Photo Documentation)

On-site Closure Location: Latitude 36.86569 N Longitude 107.40230 W NAD: 1927 1983

25. **Operator Closure Certification:**
 I hereby certify that the information and attachments submitted with this closure report is true, accurate and complete to the best of my knowledge and belief. I also certify that the closure complies with all applicable closure requirements and conditions specified in the approved closure plan.

Name (Print): Michael K. Lane Title: Sr. EH&S Specialist

Signature: [Signature] Date: 2/26/10

e-mail address: myke.lane@williams.com Telephone: 505-634-4219

Williams Production Co., LLC
San Juan Basin: New Mexico Assets
Temporary Pit In-place Closure Report
Drilling/Completion and Workover
(Groundwater >100 feet bgs)

Well: (Rosa Unit #162C)
API No: 30-03930719
Location: O-S30-T31N-R05W, NMPM

In accordance with Rule 19.15.17.13 NMAC, the following plan describes the general in-place closure requirements of temporary pits on Williams Production Co, LLC (WPX) locations in the San Juan Basin of New Mexico. This is WPX's standard procedure for all temporary pits to be utilized for the drilling, completion and/or workovers of oil and gas wells operated by WPX. For those temporary pits which do not conform to this standard closure plan, a separate well/pit specific closure plan will be developed and utilized.

All closure activities will include proper documentation and will be submitted to OCD within 60 days of the pit closure on a Closure Report using Division Form C-144. The Report will include the following:

- Details on Capping and Covering, where applicable
- Plot Plan (Pit Diagram)
- Inspection reports
- Sampling Results
- Division Form C-105: WELL COMPLETION OR RECOMPLETION REPORT AND LOG
- Copy of Deed Notice filed with the County Clerk (format to meet County requirements)
A deed notice is not required on state, federal or tribal land according to NMOCD FAQ dated October 30, 2008 and posted on the NMOCD website.

General Plan Requirements:

1. All free standing liquids will be removed from the pit at the start of the closure process. Liquids will be removed in a manner that the appropriate District Office approves including; recycled, reused, reclaimed, evaporated, and/or disposed of in a Division-approved facility. Once all free liquids are removed, the sludge will be stabilized by one of the following methods depending on equipment availability: blending with clean stockpiled soils or dewatering using a Bowl Decanter Centrifuge then blending with clean stockpiles soils.
To the extent practical, free liquids were pulled from the reserve pit following the completion rigoff. Haul dates were from (7/8/2009 to) Rosa Unit SWD #1 (Order: SWD-916, API:30-039-27055)
2. The preferred method of closure for all temporary pits will be on-site closure by in-place burial, provided all the criteria in 19.15.17.13.B are met.
On-site burial plan for this location was approved by the Aztec District Office on (04/23/2009)
3. The surface owner shall be notified of WPX's proposed closure plan using a means that provides proof of notice (i.e. certified mail/return receipt requested)
Williams notified the SMA of its intent to use a temporary pit and onsite burial in the Surface Use Plan in the well APD. The SMA was notified by email see attached. No return receipt required per BLM:FFO/NMOCD MOU dated 5/4/09.
4. Within six months of the "rig-off" status occurring WPX will ensure that the temporary pit is covered, recontoured and reseeding in progress.
Drill rig-off (5/18/2009). Request for transfer to completion rig submitted 6/19/2009) to OCD Aztec District Office, Completion rig-off (6/25/2009). Pit covered (8/14/2009). Pit area along with unused portions of well pad to be interim reclaimed in accordance with Surface Management Agency requirements in APD-COAs and per BLM:FFO/NMOCD MOU dated 5/4/09.
5. Notice of Closure will be given to the Aztec District office between 72 hours and one week of the scheduled closure via email or phone. The notification of closure will include the following:
 - a. Operators Name (WPX)
 - b. Well Name and API Number
 - c. Location (USTR)The Aztec District Office of NMOCD was notified by email using a format acceptable to the District. Copies of the notification from Abode Contractors on (8/13/2009) is attached.

6. The pit liner shall be removed above "mud level" after stabilization. Removal of the liner will consist of manually or mechanically cutting the liner at the mud level and removing all remaining liner. Care will be taken to remove "all" of the liner (i.e. anchored material). All excessive liner will be disposed of at a licensed disposal facility (probably San Juan Regional Landfill operated by Waste Management under NMED Permit SWM-052426).

The liner to the temporary pit was removed above the "mud level" once stabilized. Removal of the liner consisted of manually cutting the liner and removing all remaining liner material above the "mud level" including the anchor material. All excessive liner was disposed of at the San Juan Regional Landfill operated by Waste Management under NMED Permit SWM-052426.

7. Solidification of the remaining pit contents shall be achieved by mixing non-waste containing, earthen material. The solidification process will be accomplished use a combination of natural drying and mechanical mixing. Pit contents will be mixed with non-waste, earthen material to a consistency that is deemed safe and stable. The mixing ratio shall not exceed 3 parts non-waste to 1 part pit contents.

Following removal of free liquids, the pit contents were mixed with non-waste containing, earthen material in order to achieve appropriate solidification and a consistency that was deemed safe and stable. The solidification process was accomplished using a combination of natural drying, and mechanical mixing using a dozer and trackhoe. The mixing ration was approximately 2.5-3 parts native soil to 1 part pit contents. Solidification was completed (8/12/2009).

8. A five-point composite sample will be taken of the pit using sampling tools and all samples tested per 19.15.17.13(B)(1)(b) NMAC. In the event that the criteria are not met (See Table 1), all contents will be handled per 19.15.17.13(B)(1)(a) (i.e. dig and haul to a Division-approved facility). Approval to haul will be requested of the Aztec District office prior to initiation.

A five-point composite sampling was taken of the pit area using sampling tools and the sample was tested per 19.15.17.13(B)(1)(b) NMAC. Results are shown in Table 1 and lab reports are attached.

Table 1: Closure Criteria for Temporary Pits in Non-sensitive Areas with Groundwater >100 bgs.

Components	Testing Methods	Limits (mg/Kg)	Pit (mg/Kg)
Benzene	EPA SW-846 Method 8021B or 8260B	0.2	ND
BTEX	EPA SW-846 Method 8021B or 8260B	50	.0119
TPH	EPA SW-846 Method 418.1	2500	32.3
GRO/DRO	EPA SW-846 Method 8015M (GRO/DRO)	500	ND
Chlorides	EPA SW-846 Method 300.1	500	10

9. Upon completion of solidification and testing, the pit area will be backfilled with non-waste earthen material compacted to native conditions to enable effective revegetation for successful evapotranspiration. A minimum of four feet of cover including replacement of one foot of suitable material to establish vegetation, or the background thickness of topsoil, whichever is greater.

Upon completion of solidification and testing, the pit area was backfilled with non-waste earthen material compacted to native conditions. A minimum of four feet of cover to the extent practical was achieved and the cover included just over a foot of topsoil suitable to establish vegetation.

10. Following cover, the site will be recontoured to meet the Surface Management Agency or surface owner requirements. Re-contouring will attempt to match fit, shape, line form, and texture of the surrounding geography. Re-shaping will include drainage control, prevent ponding, and minimize erosion. Natural drainages will be unimpeded and stormwater Best Management Practices (BMPs) will be used to aid in soil stabilization and protection surface water quality.

Following cover, Williams reestablished drainage and contours to approximately match previous topography meeting the Conditions of Approval in the APD and the direction offered by a BLM/USFS inspector. Cover and re-contouring were completed (8/14/2009).

11. Notification will be sent to the Aztec District office when the reclaimed area is seeded. Williams will comply with Surface Management Agency reseeding requirements in the COAs of the APD for the referenced well, per BLM:FFO/NMOCD MOU dated 5/4/09.

12. WPX shall seed the disturbed areas the first growing season after the pit is covered. Seeding will be accomplished via drilling on the contour whenever practical, or by other Division-approved methods. Vegetative cover will equal 70% of the native perennial vegetative cover (un-impacted) consisting of at least three native plant species, including at least one grass, but not including noxious weeds, and maintained that cover through two successive growing seasons. Repeat seeding or planting will be continued until successful vegetative growth

occurs. Note: WPX assumes the seeding stipulations including mix and seeding methods specified by the Surface Management Agency (BLM, BOR, USFS, Tribal, etc.) or Land owner as part of a surface use agreement or APD are Division-approved methods unless notified by the Division of their unacceptability.

Williams will comply with Surface Management Agency reseeding requirements in the COAs of the APD for the referenced well, per BLM:FFO/NMOCD MOU dated 5/4/09.

13. The temporary pit will be located with a steel marker, no less than four inches in diameter, cemented in a hole three feet deep in the center of the on site burial upon the abandonment of all wells on the pad. The marker will be flush with the ground to allow access of the active well pad and for safety concerns. The marker will include a threaded collar to be used for future abandonment. The top of the marker will contain a welded steel 12" square plate that indicates the on site burial of the temporary pit. The plate will be easily removable and a four-foot tall riser will be threaded into the top of the collar marker and welded around the base with the operations information at the time of all wells on the pad abandoned. The information will include Operator Name, Lease Name, Well Name, and number, USTR, and an indicator that the marker is an onsite pit burial location.

The temporary pit was located with a steel marker meeting the above listed specifications. The marker has the following information welded for future reference: Williams Production, NMSE-078764, S30-T31N-R05W-O, "Pit Burial" (photo attached). Steel marker set (11/18/2009).

Submit To Appropriate District Office
Two Copies
District I
1625 N. French Dr., Hobbs, NM 88240
District II
1301 W. Grand Avenue, Artesia, NM 88210
District III
1000 Rio Brazos Rd., Aztec, NM 87410
District IV
1220 S. St. Francis Dr., Santa Fe, NM 87505

State of New Mexico
Energy, Minerals and Natural Resources

Form C-105
July 17, 2008

Oil Conservation Division
1220 South St. Francis Dr.
Santa Fe, NM 87505

1. WELL API NO.
3003930719
2. Type of Lease
 STATE FEE FED/INDIAN
3. State Oil & Gas Lease No. NMSF 078764

WELL COMPLETION OR RECOMPLETION REPORT AND LOG

4. Reason for filing:
 COMPLETION REPORT (Fill in boxes #1 through #31 for State and Fee wells only)
 C-144 CLOSURE ATTACHMENT (Fill in boxes #1 through #9, #15 Date Rig Released and #32 and/or #33; attach this and the plat to the C-144 closure report in accordance with 19.15.17.13.K NMAC)

5. Lease Name or Unit Agreement Name
Rosa Unit

6. Well Number:
162C

7. Type of Completion:
 NEW WELL WORKOVER DEEPENING PLUGBACK DIFFERENT RESERVOIR OTHER

8. Name of Operator WILLIAMS PRODUCTION, LLC

9. OGRID 120782

10. Address of Operator P.O. BOX 640 AZTEC, NM 87410

11. Pool name or Wildcat

12. Location	Unit Ltr	Section	Township	Range	Lot	Feet from the	N/S Line	Feet from the	E/W Line	County
Surface:										
BH:										

13. Date Spudded 14. Date T.D. Reached 15. Date Rig Released 6/25/2009 16. Date Completed (Ready to Produce) 17. Elevations (DF and RKB, RT, GR, etc.)

18. Total Measured Depth of Well 19. Plug Back Measured Depth 20. Was Directional Survey Made? 21. Type Electric and Other Logs Run

22. Producing Interval(s), of this completion - Top, Bottom, Name

23. CASING RECORD (Report all strings set in well)

CASING SIZE	WEIGHT LB./FT.	DEPTH SET	HOLE SIZE	CEMENTING RECORD	AMOUNT PULLED

24. LINER RECORD 25. TUBING RECORD

SIZE	TOP	BOTTOM	SACKS CEMENT	SCREEN	SIZE	DEPTH SET	PACKER SET

26. Perforation record (interval, size, and number) 27. ACID, SHOT, FRACTURE, CEMENT, SQUEEZE, ETC.

DEPTH INTERVAL	AMOUNT AND KIND MATERIAL USED

28. PRODUCTION

Date First Production Production Method (Flowing, gas lift, pumping - Size and type pump) Well Status (Prod. or Shut-in)

Date of Test	Hours Tested	Choke Size	Prod'n For Test Period	Oil - Bbl	Gas - MCF	Water - Bbl.	Gas - Oil Ratio
Flow Tubing Press.	Casing Pressure	Calculated 24-Hour Rate	Oil - Bbl.	Gas - MCF	Water - Bbl.	Oil Gravity - API - (Corr.)	

29. Disposition of Gas (Sold, used for fuel, vented, etc.) 30. Test Witnessed By

31. List Attachments

32. If a temporary pit was used at the well, attach a plat with the location of the temporary pit.

33. If an on-site burial was used at the well, report the exact location of the on-site burial:

Latitude 36.86569 Longitude -107.40230 NAD 1927 1983

I hereby certify that the information shown on both sides of this form is true and complete to the best of my knowledge and belief

Signature Tasha Meador Printed Name Tasha Meador Title EH&S Coordinator Date 7/23/08

E-mail Address: tasha.meador@williams.com

District I
1625 N. French Dr., Hobbs, NM 88240

District II
1301 W. Grand Avenue, Artesia, NM 88210

District III
1000 Rio Brazos Rd., Aztec, NM 87410

District IV
1220 S. St. Francis Dr., Santa Fe, NM 87505

State of New Mexico
Energy, Minerals & Natural Resources Department

OIL CONSERVATION DIVISION
1220 South St. Francis Dr.
Santa Fe, NM 87505

Form C-102
Revised October 12, 2005
Instructions on back
Submit to Appropriate District Office
State Lease - 4 Copies
Fee Lease - 3 Copies

AMENDED REPORT

WELL LOCATION AND ACREAGE DEDICATION PLAT

*API Number	*Pool Code	*Pool Name
	97232 / 72319 / 71599	BASIN MANCOS / BLANCO MESAVERDE / BASIN DAKOTA
*Property Code	*Property Name	*Well Number
17033	ROSA UNIT	162C
*OSRID No.	*Operator Name	*Elevation
120782	WILLIAMS PRODUCTION COMPANY	6432'

¹⁰ Surface Location

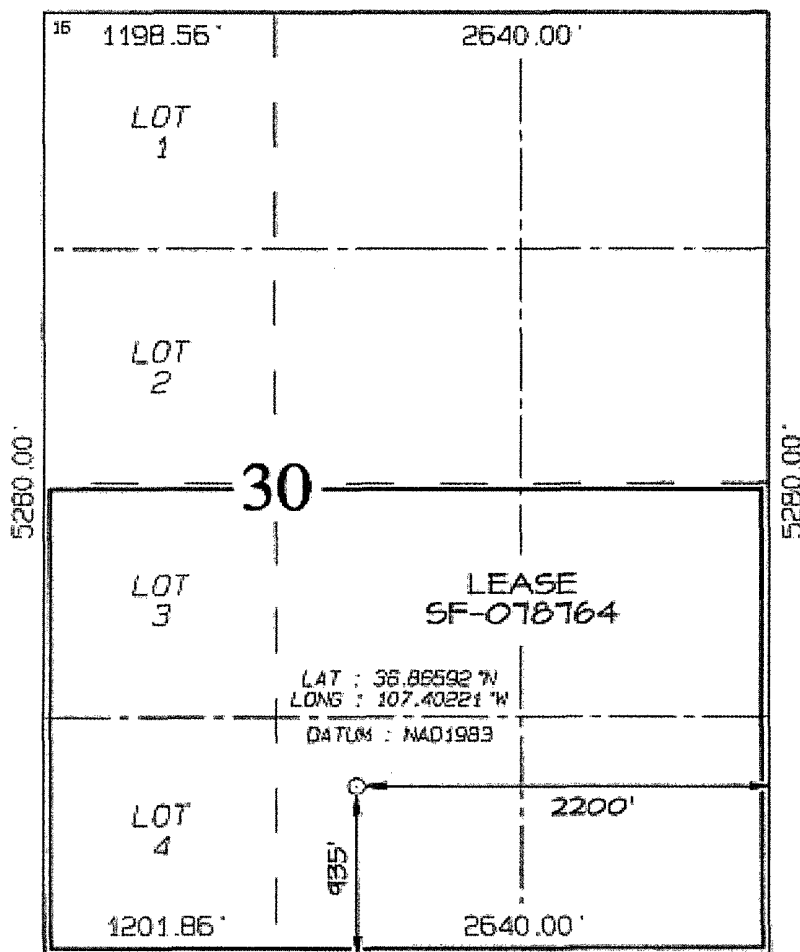
UL or lot no.	Section	Township	Range	Lot Ecn	Feet from the	North/South line	Feet from the	East/West line	County
0	30	31N	5W		935	SOUTH	2200	EAST	RIO ARriba

¹¹ Bottom Hole Location If Different From Surface

UL or lot no.	Section	Township	Range	Lot Ecn	Feet from the	North/South line	Feet from the	East/West line	County

¹² Dedicated Acres	¹³ Joint or Enfil	¹⁴ Dedication Code	¹⁵ Order No.
232.79 Acres - (S/2)			

NO ALLOWABLE WILL BE ASSIGNED TO THIS COMPLETION UNTIL ALL INTERESTS HAVE BEEN CONSOLIDATED OR A NON-STANDARD UNIT HAS BEEN APPROVED BY THE DIVISION



¹⁷ OPERATOR CERTIFICATION

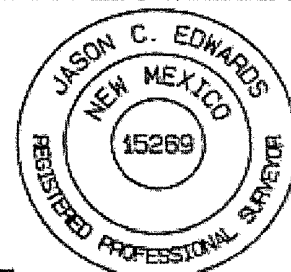
I hereby certify that the information contained herein is true and complete to the best of my knowledge and belief, and that this organization either owns a working interest or unleased mineral interest in the land including the proposed bottom-hole location or has a right to drill this well at this location pursuant to a contract with an owner of such a mineral or working interest, or to a voluntary pooling agreement or a compulsory pooling order heretofore entered by the division.

Signature _____ Date _____
Printed Name _____

¹⁸ SURVEYOR CERTIFICATION

I hereby certify that the well location shown on this plat was plotted from field notes of actual surveys made by me or under my supervision, and that the same is true and correct to the best of my belief.

Survey Date: OCTOBER 2, 2008
Signature and Seal of Professional Surveyor



JASON C. EDWARDS
Certificate Number 15269

Meador, Tasha

From: johnny@adobecontractorsinc.com
Sent: Thursday, August 13, 2009 4:46 PM
To: Brandon Powell
Cc: Lane, Myke ; Meador, Tasha ; JJ Miller
Subject: Williams clean-ups

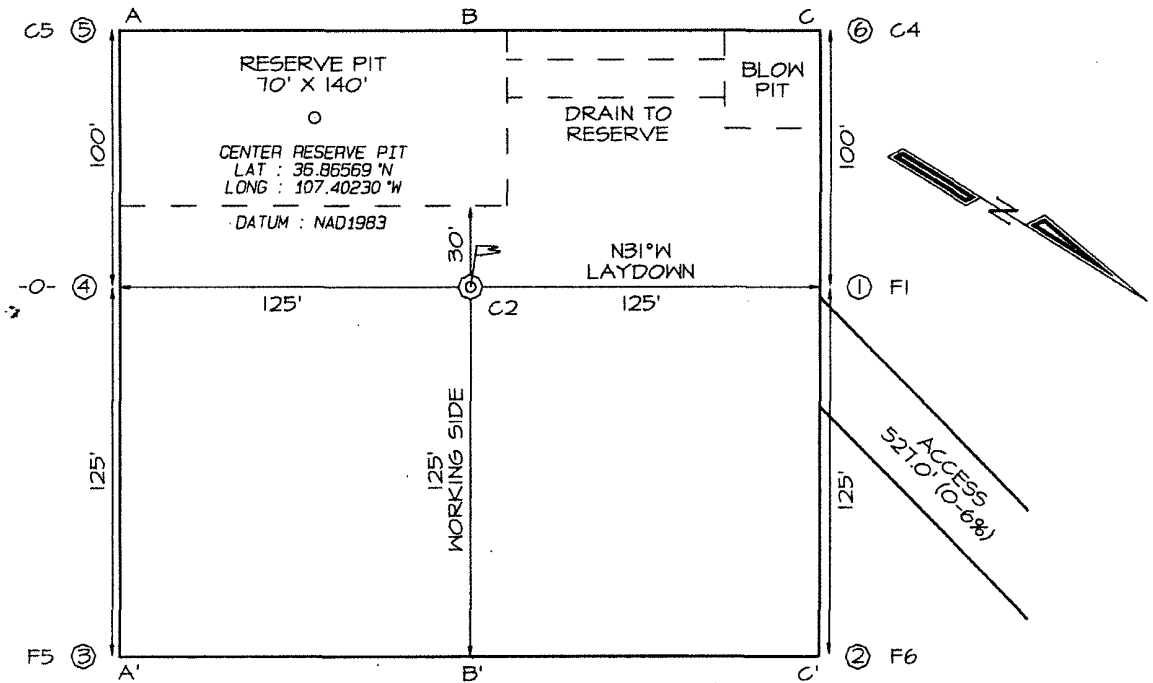
Brandon,
We are finishing up on the Rosa Unit #162C and will be moving to the Rosa Unit #359A first of next week. Let me know if you have any questions,

Thanks,

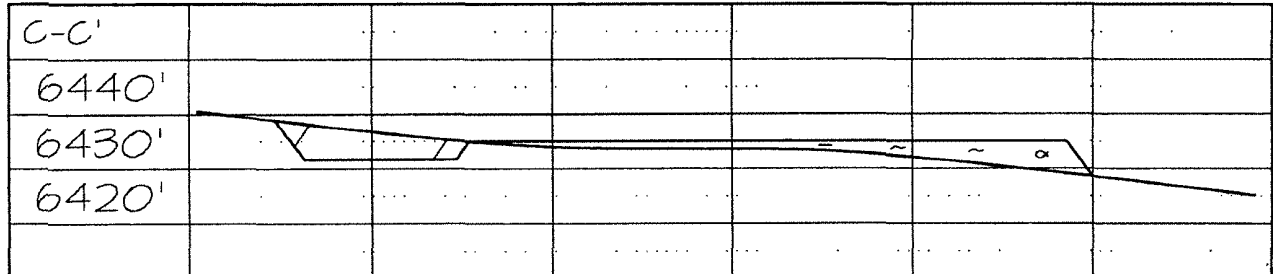
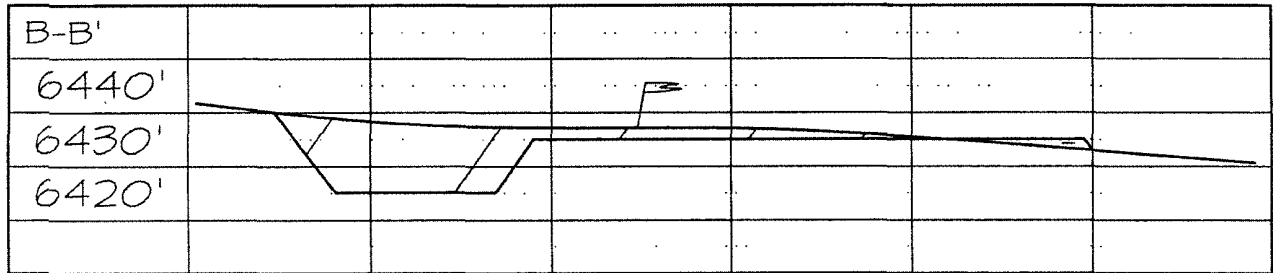
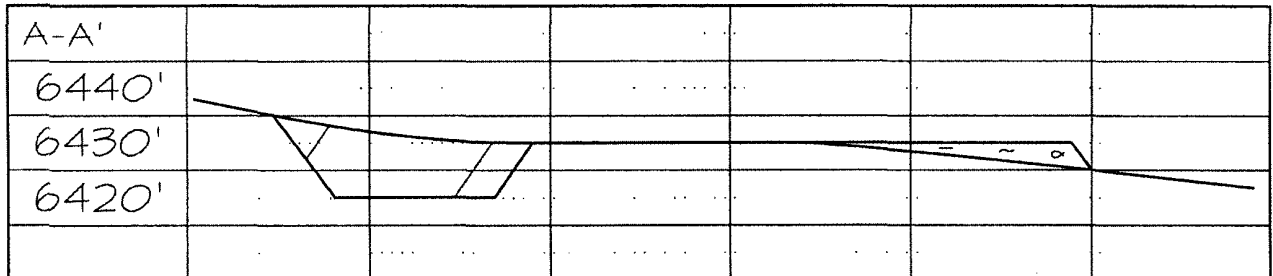
Johnny Stinson
Gen. Manager/ Adobe Contractors
Office: (505)632-1486
Mobile: (505)320-6076
johnny@adobecontractorsinc.com

WILLIAMS PRODUCTION COMPANY ROSA UNIT #162C
935' FSL & 2200' FEL, SECTION 30, T31N, R5W, NMPM
RIO ARriba COUNTY, NEW MEXICO ELEVATION: 6432'

LATITUDE: 36.86592° N
LONGITUDE: 107.40221° W
 DATUM: NAD1983



Steel T-Posts have been set to define the Edge of Disturbance limits which are 50' offset from the edge of the staked wellpad.





**EPA METHOD 8015 Modified
Nonhalogenated Volatile Organics
Total Petroleum Hydrocarbons**

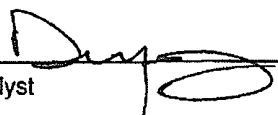
Client:	WPX	Project #:	04108-0003
Sample ID:	Reserve Pit	Date Reported:	09-04-09
Laboratory Number:	51506	Date Sampled:	08-17-09
Chain of Custody No:	7872	Date Received:	09-02-09
Sample Matrix:	Soil	Date Extracted:	09-02-09
Preservative:	Cool	Date Analyzed:	09-03-09
Condition:	Out of Holding Time	Analysis Requested:	8015 TPH

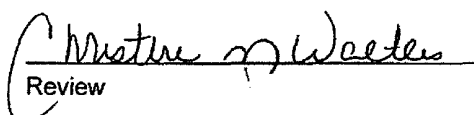
Parameter	Concentration (mg/Kg)	Det. Limit (mg/Kg)
Gasoline Range (C5 - C10)	ND	0.2
Diesel Range (C10 - C28)	ND	0.1
Total Petroleum Hydrocarbons	ND	0.2

ND - Parameter not detected at the stated detection limit.

References: Method 8015B, Nonhalogenated Volatile Organics, Test Methods for Evaluating Solid Waste, SW-846, USEPA, December 1996.

Comments: **Rosa Unit #162C**


Analyst


Review



**EPA Method 8015 Modified
Nonhalogenated Volatile Organics
Total Petroleum Hydrocarbons**

Quality Assurance Report

Client:	QA/QC	Project #:	N/A
Sample ID:	09-03-09 QA/QC	Date Reported:	09-04-09
Laboratory Number:	51484	Date Sampled:	N/A
Sample Matrix:	Methylene Chloride	Date Received:	N/A
Preservative:	N/A	Date Analyzed:	09-03-09
Condition:	N/A	Analysis Requested:	TPH

Sample	Cal Date	Cal RF	C-Cal RF	% Difference	Accept Range
Gasoline Range C5 - C10	05-07-07	1.0100E+003	1.0104E+003	0.04%	0 - 15%
Diesel Range C10 - C28	05-07-07	1.0862E+003	1.0867E+003	0.04%	0 - 15%

Sample	Concentration	Detection Limit
Gasoline Range C5 - C10	ND	0.2
Diesel Range C10 - C28	ND	0.1
Total Petroleum Hydrocarbons	ND	0.2

Sample	Duplicate	% Difference	Accept Range
Gasoline Range C5 - C10	ND	0.0%	0 - 30%
Diesel Range C10 - C28	ND	0.0%	0 - 30%

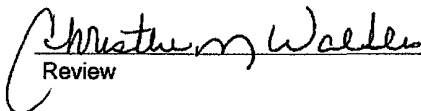
Sample	Spike Added	Spike Result	Recovery	Accept Range
Gasoline Range C5 - C10	250	254	102%	75 - 125%
Diesel Range C10 - C28	250	230	92.0%	75 - 125%

ND - Parameter not detected at the stated detection limit.

References: Method 8015B, Nonhalogenated Volatile Organics, Test Methods for Evaluating Solid Waste, SW-846, USEPA, December 1996.

Comments: QA/QC for Samples 51484, 51499, 51500, 51506, and 51507.

Analyst 

Review 

Client:	WPX	Project #:	04108-0003
Sample ID:	Reserve Pit	Date Reported:	09-04-09
Laboratory Number:	51506	Date Sampled:	08-17-09
Chain of Custody:	7872	Date Received:	09-02-09
Sample Matrix:	Soil	Date Analyzed:	09-03-09
Preservative:	Cool	Date Extracted:	09-02-09
Condition:	Out of Holding Time	Analysis Requested:	BTEX

Parameter	Concentration (ug/Kg)	Det. Limit (ug/Kg)
Benzene	ND	0.9
Toluene	5.1	1.0
Ethylbenzene	1.3	1.0
p,m-Xylene	3.2	1.2
o-Xylene	2.3	0.9
Total BTEX	11.9	

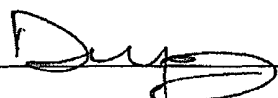
ND - Parameter not detected at the stated detection limit.

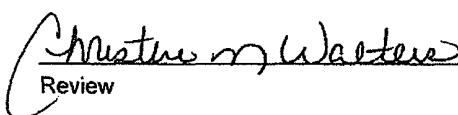
Surrogate Recoveries:	Parameter	Percent Recovery
	Fluorobenzene	98.0 %
	1,4-difluorobenzene	98.0 %
	Bromochlorobenzene	98.0 %

References: Method 5030B, Purge-and-Trap, Test Methods for Evaluating Solid Waste, SW-846, USEPA, December 1996.

Method 8021B, Aromatic Volatile Organics, Test Methods for Evaluating Solid Waste, SW-846, USEPA, December 1996.

Comments: Rosa Unit #162C

Analyst 

Review 



Client:	N/A	Project #:	N/A
Sample ID:	09-03-BT QA/QC	Date Reported:	09-04-09
Laboratory Number:	51484	Date Sampled:	N/A
Sample Matrix:	Soil	Date Received:	N/A
Preservative:	N/A	Date Analyzed:	09-03-09
Condition:	N/A	Analysis:	BTEX

Calibration and Detection Limits (ug/l)	PCa/RI	C-Cal/RI	%Diff	Blank Conc	Detect Limit
		Accept. Range 0 - 10%			
Benzene	2.4113E+006	2.4161E+006	0.2%	ND	0.1
Toluene	2.2516E+006	2.2561E+006	0.2%	ND	0.1
Ethylbenzene	2.0113E+006	2.0153E+006	0.2%	ND	0.1
p,m-Xylene	5.2239E+006	5.2344E+006	0.2%	ND	0.1
o-Xylene	1.9453E+006	1.9492E+006	0.2%	ND	0.1


Duplicate Conc. (ug/Kg)	Samples	Duplicates	%Diff	Accept. Range	Detect. Limit
Benzene	16.0	15.9	0.6%	0 - 30%	0.9
Toluene	12.2	13.3	9.0%	0 - 30%	1.0
Ethylbenzene	13.1	12.7	3.1%	0 - 30%	1.0
p,m-Xylene	24.8	24.5	1.2%	0 - 30%	1.2
o-Xylene	15.7	15.4	1.9%	0 - 30%	0.9

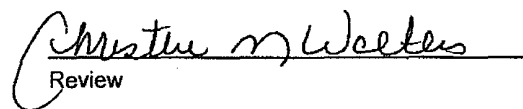
Spiked Conc. (ug/Kg)	Sample	Amount Spiked	Spiked Sample	% Recovery	Accept. Range
Benzene	16.0	50.0	65.5	99.2%	39 - 150
Toluene	12.2	50.0	61.3	98.6%	46 - 148
Ethylbenzene	13.1	50.0	61.6	97.6%	32 - 160
p,m-Xylene	24.8	100	127	102%	46 - 148
o-Xylene	15.7	50.0	58.7	89.3%	46 - 148

ND - Parameter not detected at the stated detection limit.

References: Method 5030B, Purge-and-Trap, Test Methods for Evaluating Solid Waste, SW-846, USEPA, December 1996.
Method 8021B, Aromatic and Halogenated Volatiles by Gas Chromatography Using Photoionization and/or Electrolytic Conductivity Detectors, SW-846, USEPA December 1996.

Comments: QA/QC for Samples 51484, 51499, 51502 - 51504, and 51506 - 51507.

Analyst 

Review 



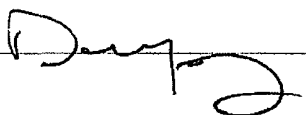
Client:	WPX	Project #:	04108-0003
Sample ID:	Reserve Pit	Date Reported:	09-04-09
Laboratory Number:	51506	Date Sampled:	08-17-09
Chain of Custody No:	7872	Date Received:	09-02-09
Sample Matrix:	Soil	Date Extracted:	09-03-09
Preservative:	Cool	Date Analyzed:	09-03-09
Condition:	Intact	Analysis Needed:	TPH-418.1

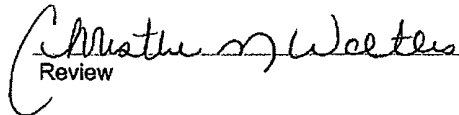
Parameter	Concentration (mg/kg)	Det. Limit (mg/kg)
Total Petroleum Hydrocarbons	32.3	10.4

ND = Parameter not detected at the stated detection limit.

References: Method 418.1, Petroleum Hydrocarbons, Total Recoverable, Chemical Analysis of Water and Waste, USEPA Storet No. 4551, 1978.

Comments: Rosa Unit #162C.

Analyst 

Review 



Client:	QA/QC	Project #:	N/A
Sample ID:	QA/QC	Date Reported:	09-03-09
Laboratory Number:	09-03-TPH.QA/QC 51506	Date Sampled:	N/A
Sample Matrix:	Freon-113	Date Analyzed:	09-03-09
Preservative:	N/A	Date Extracted:	09-03-09
Condition:	N/A	Analysis Needed:	TPH

Calibration	I-Cal Date	C-Cal Date	I-Cal RF:	C-Cal RF:	% Difference	Accept. Range
	08-25-09	09-03-09	1,440	1,520	5.6%	+/- 10%

Blank Conc. (mg/Kg)	Concentration	Detection Limit
TPH	ND	10.4

Duplicate Conc. (mg/Kg)	Sample	Duplicate	% Difference	Accept. Range
TPH	32.3	26.6	17.6%	+/- 30%

Spike Conc. (mg/Kg)	Sample	Spike Added	Spike Result	% Recovery	Accept Range
TPH	32.3	2,000	1,930	95.0%	80 - 120%

ND = Parameter not detected at the stated detection limit.

References: Method 418.1, Petroleum Hydrocarbons, Total Recoverable, Chemical Analysis of Water and Waste, USEPA Storet No. 4551, 1978.

Comments: QA/QC for Samples 51337, 51506 - 51509, 51511 - 51513, 51522 and 51532.

Analyst

Review

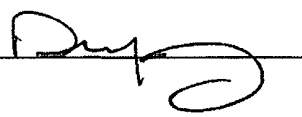


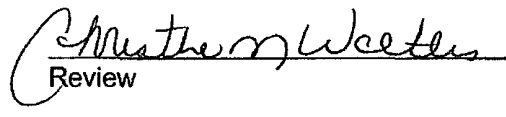
Client:	WPX	Project #:	04108-0003
Sample ID:	Reserve Pit	Date Reported:	09-04-09
Lab ID#:	51506	Date Sampled:	08-17-09
Sample Matrix:	Soil	Date Received:	09-02-09
Preservative:	Cool	Date Analyzed:	09-03-09
Condition:	Intact	Chain of Custody:	7872

Parameter	Concentration (mg/Kg)
Total Chloride	10

Reference: U.S.E.P.A., 4500B, "Methods for Chemical Analysis of Water and Wastes", 1983.
Standard Methods For The Examination of Water And Waste Water", 18th ed., 1992.

Comments: Rosa Unit #162C.

Analyst 

Review 



Exploration & Production
 San Juan Basin Operations
 720 So. Main / PO Box 640
 Aztec, NM 87410
 505-634-4200 / 505-634-4205 fax

Temporary Pit Inspection

FACILITY INFORMATION

Facility Name: Rosa unit# 162-C	API #: 30-039-30719
---------------------------------	---------------------

Pit Type: <input checked="" type="checkbox"/> Drilling <input type="checkbox"/> Workover <input type="checkbox"/> Cavitation	Inspection: <input checked="" type="checkbox"/> Daily <input type="checkbox"/> Weekly <input type="checkbox"/> Monthly
--	--

Pit Liner intact (no visible tears)	<input checked="" type="checkbox"/> Yes <input type="checkbox"/> No If No, Report to EH&S immediately	Date / Time Reported:
Pit Properly Fenced (no fence on rig side if on site)	<input checked="" type="checkbox"/> Yes <input type="checkbox"/> No <input type="checkbox"/> Not Required (if site fully fenced)	
Pit Slopes intact	<input checked="" type="checkbox"/> Yes <input type="checkbox"/> No	
Adequate freeboard (liquid level 2 vertical feet from berm top)	<input checked="" type="checkbox"/> Yes <input type="checkbox"/> No <input type="checkbox"/> Not Applicable	
Free oil or sheen present on pit	<input type="checkbox"/> Yes <input checked="" type="checkbox"/> No	
Flare Pit free of liquids	<input checked="" type="checkbox"/> Yes <input type="checkbox"/> No <input type="checkbox"/> Not Applicable	

Comments:

Inspector Signature: WILLIE MOCK
Printed Name: WILLIE MOCK
Title: Drlg Consultant (TDCI)
Date: 05/08/2009 Phone: (505) 793-0528

Record Retention: Submit with Closure
 File: EH&S



Exploration & Production
 San Juan Basin Operations
 720 So. Main / PO Box 640
 Aztec, NM 87410
 505-634-4200 / 505-634-4205 fax

Temporary Pit Inspection

FACILITY INFORMATION

Facility Name: Rosa unit# 162-C	API #: 30-039-30719
--	----------------------------

Pit Type: <input checked="" type="checkbox"/> Drilling <input type="checkbox"/> Workover <input type="checkbox"/> Cavitation	Inspection: <input checked="" type="checkbox"/> Daily <input type="checkbox"/> Weekly <input type="checkbox"/> Monthly
---	---

Pit Liner intact (no visible tears)	<input checked="" type="checkbox"/> Yes <input type="checkbox"/> No If No, Report to EH&S immediately	Date / Time Reported:
Pit Properly Fenced (no fence on rig side if on site)	<input checked="" type="checkbox"/> Yes <input type="checkbox"/> No <input type="checkbox"/> Not Required (if site fully fenced)	
Pit Slopes intact	<input checked="" type="checkbox"/> Yes <input type="checkbox"/> No	
Adequate freeboard (liquid level 2 vertical feet from berm top)	<input checked="" type="checkbox"/> Yes <input type="checkbox"/> No <input type="checkbox"/> Not Applicable	
Free oil or sheen present on pit	<input type="checkbox"/> Yes <input checked="" type="checkbox"/> No	
Flare Pit free of liquids	<input checked="" type="checkbox"/> Yes <input type="checkbox"/> No <input type="checkbox"/> Not Applicable	

Comments:

Inspector Signature: WILLIE MOCK
Printed Name: WILLIE MOCK
Title: Drlg Consultant (TDCI)
Date: 05/09/2009 Phone: (505) 793-0528

Record Retention: Submit with Closure
 File: EH&S



Exploration & Production
 San Juan Basin Operations
 720 So. Main / PO Box 640
 Aztec, NM 87410
 505-634-4200 / 505-634-4205 fax

Temporary Pit Inspection

FACILITY INFORMATION

Facility Name: Rosa unit# 162-C	API #: 30-039-30719
--	----------------------------

Pit Type: <input checked="" type="checkbox"/> Drilling <input type="checkbox"/> Workover <input type="checkbox"/> Cavitation	Inspection: <input checked="" type="checkbox"/> Daily <input type="checkbox"/> Weekly <input type="checkbox"/> Monthly
---	---

Pit Liner intact (no visible tears)	<input checked="" type="checkbox"/> Yes <input type="checkbox"/> No <small>If No, Report to EH&S immediately</small>	Date / Time Reported:
Pit Properly Fenced (no fence on rig side if on site)	<input checked="" type="checkbox"/> Yes <input type="checkbox"/> No <input type="checkbox"/> Not Required (if site fully fenced)	
Pit Slopes intact	<input checked="" type="checkbox"/> Yes <input type="checkbox"/> No	
Adequate freeboard (liquid level 2 vertical feet from berm top)	<input checked="" type="checkbox"/> Yes <input type="checkbox"/> No <input type="checkbox"/> Not Applicable	
Free oil or sheen present on pit	<input type="checkbox"/> Yes <input checked="" type="checkbox"/> No	
Flare Pit free of liquids	<input checked="" type="checkbox"/> Yes <input type="checkbox"/> No <input type="checkbox"/> Not Applicable	

Comments:

Inspector Signature: WILLIE MOCK
Printed Name: WILLIE MOCK
Title: Drlg Consultant (TDCI)
Date: 05/10/2009 Phone: (505) 793-0528

Record Retention: Submit with Closure
 File: EH&S



Exploration & Production
 San Juan Basin Operations
 720 So. Main / PO Box 640
 Aztec, NM 87410
 505-634-4200 / 505-634-4205 fax

Temporary Pit Inspection

FACILITY INFORMATION

Facility Name: Rosa unit# 162-C	API #: 30-039-30719
--	----------------------------

Pit Type: <input checked="" type="checkbox"/> Drilling <input type="checkbox"/> Workover <input type="checkbox"/> Cavitation	Inspection: <input checked="" type="checkbox"/> Daily <input type="checkbox"/> Weekly <input type="checkbox"/> Monthly
---	---

Pit Liner intact (no visible tears)	<input checked="" type="checkbox"/> Yes <input type="checkbox"/> No <small>If No, Report to EH&S immediately</small>	Date / Time Reported:
Pit Properly Fenced (no fence on rig side if on site)	<input checked="" type="checkbox"/> Yes <input type="checkbox"/> No <input type="checkbox"/> Not Required (if site fully fenced)	
Pit Slopes intact	<input checked="" type="checkbox"/> Yes <input type="checkbox"/> No	
Adequate freeboard (liquid level 2 vertical feet from berm top)	<input checked="" type="checkbox"/> Yes <input type="checkbox"/> No <input type="checkbox"/> Not Applicable	
Free oil or sheen present on pit	<input type="checkbox"/> Yes <input checked="" type="checkbox"/> No	
Flare Pit free of liquids	<input checked="" type="checkbox"/> Yes <input type="checkbox"/> No <input type="checkbox"/> Not Applicable	

Comments:

Inspector Signature: WILLIE MOCK
Printed Name: WILLIE MOCK
Title: Drlg Consultant (TDCI)
Date: 05/11/2009 Phone: (505) 793-0528

Record Retention: Submit with Closure
 File: EH&S



Exploration & Production
 San Juan Basin Operations
 720 So. Main / PO Box 640
 Aztec, NM 87410
 505-634-4200 / 505-634-4205 fax

Temporary Pit Inspection

FACILITY INFORMATION

Facility Name: Rosa unit# 162-C	API #: 30-039-30719
--	----------------------------

Pit Type: <input checked="" type="checkbox"/> Drilling <input type="checkbox"/> Workover <input type="checkbox"/> Cavitation	Inspection: <input checked="" type="checkbox"/> Daily <input type="checkbox"/> Weekly <input type="checkbox"/> Monthly
---	---

Pit Liner intact (no visible tears)	<input checked="" type="checkbox"/> Yes <input type="checkbox"/> No <small>If No, Report to EH&S immediately</small>	Date / Time Reported:
Pit Properly Fenced (no fence on rig side if on site)	<input checked="" type="checkbox"/> Yes <input type="checkbox"/> No <input type="checkbox"/> Not Required (if site fully fenced)	
Pit Slopes intact	<input checked="" type="checkbox"/> Yes <input type="checkbox"/> No	
Adequate freeboard (liquid level 2 vertical feet from berm top)	<input checked="" type="checkbox"/> Yes <input type="checkbox"/> No <input type="checkbox"/> Not Applicable	
Free oil or sheen present on pit	<input type="checkbox"/> Yes <input checked="" type="checkbox"/> No	
Flare Pit free of liquids	<input checked="" type="checkbox"/> Yes <input type="checkbox"/> No <input type="checkbox"/> Not Applicable	

Comments:

Inspector Signature: WILLIE MOCK
Printed Name: WILLIE MOCK
Title: Drlg Consultant (TDCI)
Date: 05/12/2009 Phone: (505) 793-0528

Record Retention: Submit with Closure
 File: EH&S

Exploration & Production
 San Juan Basin Operations
 720 So. Main / PO Box 640
 Aztec, NM 87410
 505-634-4200 / 505-634-4205 fax



Temporary Pit Inspection

FACILITY INFORMATION

Facility Name: Rosa Unit #162C	API #: 30 - 039 -
---------------------------------------	--------------------------

Pit Type: Drilling Workover X Completion	Inspection: Daily (Rig) Weekly (Tech)
---	---

Pit Liner intact (no visible tears)	X Yes No If No, Report to EH&S immediately	Date Reported:	Time
Pit Properly Fenced (no fence on rig side if on site)	X Yes No Not Required (if site fully fenced)		
Pit Slopes intact	X Yes No		
Adequate freeboard (liquid level 2 vertical feet from berm top)	X Yes No Not Applicable		
Free oil or sheen present on pit	Yes X No		
Flare Pit free of liquids	X Yes No Not Applicable		
Comments:			
Inspector Signature:			
Printed Name: Weldon Higgins			
Title: rig consultant			
Date: 6/04/09		Phone: 505-320-4871	

Record Retention: Submit with Closure
 File: EH&S Well Files

Exploration & Production
San Juan Basin Operations
720 So. Main / PO Box 640
Aztec, NM 87410
505-634-4200 / 505-634-4205 fax



Temporary Pit Inspection

FACILITY INFORMATION

Facility Name: Rosa Unit #162C

API #: 30 - 039 -

Pit Type: Drilling

Workover

X Completion

Inspection:

Daily (Rig)

Weekly (Tech)

Pit Liner intact (no visible tears)	X Yes No If No, Report to EH&S immediately	Date Reported:	Time
Pit Properly Fenced (no fence on rig side if on site)	X Yes No Not Required (if site fully fenced)		
Pit Slopes intact	X Yes No		
Adequate freeboard (liquid level 2 vertical feet from berm top)	X Yes No Not Applicable		
Free oil or sheen present on pit	Yes X No		
Flare Pit free of liquids	X Yes No Not Applicable		
Comments:			
Inspector Signature:			
Printed Name: Weldon Higgins			
Title: rig consultant			
Date: 6/05/09		Phone: 505-320-4871	

Record Retention: Submit with Closure
File: EH&S Well Files

Exploration & Production
 San Juan Basin Operations
 720 So. Main / PO Box 640
 Aztec, NM 87410
 505-634-4200 / 505-634-4205 fax



Temporary Pit Inspection

FACILITY INFORMATION

Facility Name: Rosa Unit #162C	API #: 30 - 039 -
---------------------------------------	--------------------------

Pit Type: Drilling Workover X Completion	Inspection: Daily (Rig) Weekly (Tech)
---	---

Pit Liner intact (no visible tears)	X Yes No If No, Report to EH&S immediately	Date Reported:	Time
Pit Properly Fenced (no fence on rig side if on site)	X Yes No Not Required (if site fully fenced)		
Pit Slopes intact	X Yes No		
Adequate freeboard (liquid level 2 <u>vertical</u> feet from berm top)	X Yes No Not Applicable		
Free oil or sheen present on pit	Yes X No		
Flare Pit free of liquids	X Yes No Not Applicable		
Comments:			
Inspector Signature:			
Printed Name: Weldon Higgins			
Title: rig consultant			
Date: 6/06/09		Phone: 505-320-4871	

Record Retention: Submit with Closure
 File: EH&S Well Files

Exploration & Production
 San Juan Basin Operations
 720 So. Main / PO Box 640
 Aztec, NM 87410
 505-634-4200 / 505-634-4205 fax



Temporary Pit Inspection

FACILITY INFORMATION

Facility Name: Rosa Unit #162C	API #: 30 - 039 -
---------------------------------------	--------------------------

Pit Type: Drilling Workover X Completion	Inspection: Daily (Rig) Weekly (Tech)
---	---

	X Yes	No	If No, Report to EH&S immediately	Date Reported:	Time
Pit Liner intact (no visible tears)	X				
Pit Properly Fenced (no fence on rig side if on site)	X		Not Required (if site fully fenced)		
Pit Slopes intact	X		No		
Adequate freeboard (liquid level 2 vertical feet from berm top)	X		Not Applicable		
Free oil or sheen present on pit		X	No		
Flare Pit free of liquids	X		Not Applicable		
Comments:					
Inspector Signature:					
Printed Name: Weldon Higgins					
Title: rig consultant					
Date: 6/08/09			Phone: 505-320-4871		

Record Retention: Submit with Closure
 File: EH&S Well Files

Exploration & Production
 San Juan Basin Operations
 720 So. Main / PO Box 640
 Aztec, NM 87410
 505-634-4200 / 505-634-4205 fax



Temporary Pit Inspection

FACILITY INFORMATION

Facility Name: Rosa Unit #162C	API #: 30 - 039 -
---------------------------------------	--------------------------

Pit Type:	Drilling	Workover	<input checked="" type="checkbox"/> Completion	Inspection:	Daily (Rig)	Weekly (Tech)
------------------	----------	----------	--	--------------------	-------------	---------------

	X Yes	No	If No, Report to EH&S immediately	Date Reported:	Time
Pit Liner intact (no visible tears)	X				
Pit Properly Fenced (no fence on rig side if on site)	X	Yes	No	Not Required (if site fully fenced)	
Pit Slopes intact	X	Yes	No		
Adequate freeboard (liquid level 2 vertical feet from berm top)	X	Yes	No	Not Applicable	
Free oil or sheen present on pit	Yes	X	No		
Flare Pit free of liquids	X	Yes	No	Not Applicable	

Comments:

Inspector Signature:

Printed Name: Weldon Higgins

Title: rig consultant

Date: 6/07/09 Phone: 505-320-4871

Record Retention: Submit with Closure
 File: EH&S Well Files

Exploration & Production
 San Juan Basin Operations
 720 So. Main / PO Box 640
 Aztec, NM 87410
 505-634-4200 / 505-634-4205 fax



Temporary Pit Inspection

FACILITY INFORMATION

Facility Name: Rosa Unit #162C	API #: 30 - 039 -
---------------------------------------	--------------------------

Pit Type: Drilling Workover <input checked="" type="checkbox"/> Completion	Inspection: Daily (Rig) Weekly (Tech)
--	---

	X Yes	No	If No, Report to EH&S immediately	Date Reported:	Time
Pit Liner intact (no visible tears)	<input checked="" type="checkbox"/>				
Pit Properly Fenced (no fence on rig side if on site)	<input checked="" type="checkbox"/>		Not Required (if site fully fenced)		
Pit Slopes intact	<input checked="" type="checkbox"/>				
Adequate freeboard (liquid level 2 <u>vertical</u> feet from berm top)	<input checked="" type="checkbox"/>		Not Applicable		
Free oil or sheen present on pit		<input checked="" type="checkbox"/>			
Flare Pit free of liquids	<input checked="" type="checkbox"/>		Not Applicable		

Comments:

Inspector Signature: _____

Printed Name: Weldon Higgins

Title: rig consultant

Date: 6/09/09 Phone: 505-320-4871

Record Retention: Submit with Closure
 File: EH&S Well Files

Exploration & Production
 San Juan Basin Operations
 720 So. Main / PO Box 640
 Aztec, NM 87410
 505-634-4200 / 505-634-4205 fax



Temporary Pit Inspection

FACILITY INFORMATION

Facility Name: Rosa Unit #162C	API #: 30 - 039 -
---------------------------------------	--------------------------

Pit Type: Drilling Workover <input checked="" type="checkbox"/> Completion	Inspection: Daily (Rig) Weekly (Tech)
--	---

Pit Liner intact (no visible tears)	<input checked="" type="checkbox"/> Yes <input type="checkbox"/> No If No, Report to EH&S immediately	Date Reported:	Time
Pit Properly Fenced (no fence on rig side if on site)	<input checked="" type="checkbox"/> Yes <input type="checkbox"/> No Not Required (if site fully fenced)		
Pit Slopes intact	<input checked="" type="checkbox"/> Yes <input type="checkbox"/> No		
Adequate freeboard (liquid level 2 vertical feet from berm top)	<input checked="" type="checkbox"/> Yes <input type="checkbox"/> No Not Applicable		
Free oil or sheen present on pit	<input type="checkbox"/> Yes <input checked="" type="checkbox"/> No		
Flare Pit free of liquids	<input checked="" type="checkbox"/> Yes <input type="checkbox"/> No Not Applicable		
Comments:			
Inspector Signature:			
Printed Name: Weldon Higgins			
Title: rig consultant			
Date: 6/11/09		Phone: 505-320-4871	

Record Retention: Submit with Closure
 File: EH&S Well Files

Exploration & Production
 San Juan Basin Operations
 720 So. Main / PO Box 640
 Aztec, NM 87410
 505-634-4200 / 505-634-4205 fax



Temporary Pit Inspection

FACILITY INFORMATION

Facility Name: Rosa Unit #162C	API #: 30 - 039 -
---------------------------------------	--------------------------

Pit Type:	Drilling	Workover	<input checked="" type="checkbox"/> Completion	Inspection:	Daily (Rig)	Weekly (Tech)
------------------	----------	----------	--	--------------------	-------------	---------------

	<input checked="" type="checkbox"/> Yes	<input type="checkbox"/> No	If No, Report to EH&S immediately	Date Reported:	Time
Pit Liner intact (no visible tears)	<input checked="" type="checkbox"/> Yes	<input type="checkbox"/> No	Not Required (if site fully fenced)		
Pit Properly Fenced (no fence on rig side if on site)	<input checked="" type="checkbox"/> Yes	<input type="checkbox"/> No			
Pit Slopes intact	<input checked="" type="checkbox"/> Yes	<input type="checkbox"/> No			
Adequate freeboard (liquid level 2 <u>vertical</u> feet from berm top)	<input checked="" type="checkbox"/> Yes	<input type="checkbox"/> No	Not Applicable		
Free oil or sheen present on pit	<input type="checkbox"/> Yes	<input checked="" type="checkbox"/> No			
Flare Pit free of liquids	<input checked="" type="checkbox"/> Yes	<input type="checkbox"/> No	Not Applicable		
Comments:					
Inspector Signature:					
Printed Name: Weldon Higgins					
Title: rig consultant					
Date: 6/12/09 Phone: 505-320-4871					

Record Retention: Submit with Closure
 File: EH&S Well Files

Exploration & Production
 San Juan Basin Operations
 720 So. Main / PO Box 640
 Aztec, NM 87410
 505-634-4200 / 505-634-4205 fax



Temporary Pit Inspection

FACILITY INFORMATION

Facility Name: Rosa Unit #162C	API #: 30 - 039 -
--------------------------------	-------------------

Pit Type: Drilling	Workover	X Completion	Inspection:	Daily (Rig)	Weekly (Tech)
--------------------	----------	--------------	-------------	-------------	---------------

	X	Yes	No	If No, Report to EH&S immediately	Date Reported:	Time
Pit Liner intact (no visible tears)	X					
Pit Properly Fenced (no fence on rig side if on site)	X			Not Required (if site fully fenced)		
Pit Slopes intact	X					
Adequate freeboard (liquid level 2 vertical feet from berm top)	X			Not Applicable		
Free oil or sheen present on pit			X			
Flare Pit free of liquids	X			Not Applicable		

Comments:

Inspector Signature:

Printed Name: Weldon Higgins

Title: rig consultant

Date: 6/13/09 Phone: 505-320-4871

Record Retention: Submit with Closure
 File: EH&S Well Files

Exploration & Production
 San Juan Basin Operations
 720 So. Main / PO Box 640
 Aztec, NM 87410
 505-634-4200 / 505-634-4205 fax



Temporary Pit Inspection

FACILITY INFORMATION

Facility Name: Rosd Unit #162C	API #: 30 - 039 -
---------------------------------------	--------------------------

Pit Type: Drilling	Workover	X Completion	Inspection: Daily (Rig)	Weekly (Tech)
---------------------------	----------	--------------	--------------------------------	---------------

Pit Liner intact (no visible tears)	X Yes No If No,		Date	Time
	Report to EH&S immediately		Reported:	
Pit Properly Fenced (no fence on rig side if on site)	X Yes	No	Not Required (if site fully fenced)	
Pit Slopes intact	X Yes	No		
Adequate freeboard (liquid level 2 vertical feet from berm top)	X Yes	No	Not Applicable	
Free oil or sheen present on pit	Yes	X No		
Flare Pit free of liquids	X Yes	No	Not Applicable	
Comments:				
Inspector Signature:				
Printed Name: Weldon Higgins				
Title: rig consultant				
Date: 6/14/09	Phone: 505-320-4871			

Record Retention: Submit with Closure
 File: EH&S Well Files

Exploration & Production
San Juan Basin Operations
720 So. Main / PO Box 640
Aztec, NM 87410
505-634-4200 / 505-634-4205 fax



Temporary Pit Inspection

FACILITY INFORMATION

Facility Name: Rosa Unit #162C	API #: 30 - 039 -
---------------------------------------	--------------------------

Pit Type: Drilling	Workover	X Completion	Inspection: Daily (Rig)	Weekly (Tech)
---------------------------	----------	--------------	--------------------------------	---------------

	X Yes	No	If No, Report to EH&S immediately	Date Reported:	Time
Pit Liner intact (no visible tears)	X				
Pit Properly Fenced (no fence on rig side if on site)	X		Not Required (if site fully fenced)		
Pit Slopes intact	X				
Adequate freeboard (liquid level 2 vertical feet from berm top)	X		Not Applicable		
Free oil or sheen present on pit		X			
Flare Pit free of liquids	X		Not Applicable		
Comments:					
Inspector Signature:					
Printed Name: Weldon Higgins					
Title: rig consultant					
Date: 6/15/09			Phone: 505-320-4871		

Record Retention: Submit with Closure
File: EH&S Well Files

Exploration & Production
 San Juan Basin Operations
 720 So. Main / PO Box 640
 Aztec, NM 87410
 505-634-4200 / 505-634-4205 fax



Temporary Pit Inspection

FACILITY INFORMATION

Facility Name: Rosa Unit #162C	API #: 30 - 039 -
---------------------------------------	--------------------------

Pit Type: Drilling Workover X Completion	Inspection: Daily (Rig) Weekly (Tech)
---	---

Pit Liner intact (no visible tears)	X Yes No If No, Report to EH&S immediately	Date Reported:	Time
Pit Properly Fenced (no fence on rig side if on site)	X Yes No Not Required (if site fully fenced)		
Pit Slopes intact	X Yes No		
Adequate freeboard (liquid level 2 <u>vertical</u> feet from berm top)	X Yes No Not Applicable		
Free oil or sheen present on pit	Yes X No		
Flare Pit free of liquids	X Yes No Not Applicable		
Comments:			
Inspector Signature:			
Printed Name: Weldon Higgins			
Title: rig consultant			
Date: 6/18/09		Phone: 505-320-4871	

Record Retention: Submit with Closure
 File: EH&S Well Files

Exploration & Production
 San Juan Basin Operations
 720 So. Main / PO Box 640
 Aztec, NM 87410
 505-634-4200 / 505-634-4205 fax



Temporary Pit Inspection

FACILITY INFORMATION

Facility Name: Rosa Unit #162C	API #: 30 - 039 -
---------------------------------------	--------------------------

Pit Type: Drilling Workover X Completion	Inspection: Daily (Rig) Weekly (Tech)
---	---

Pit Liner intact (no visible tears)	X Yes No If No, Report to EH&S immediately	Date Reported:	Time
Pit Properly Fenced (no fence on rig side if on site)	X Yes No Not Required (if site fully fenced)		
Pit Slopes intact	X Yes No		
Adequate freeboard (liquid level 2 vertical feet from berm top)	X Yes No Not Applicable		
Free oil or sheen present on pit	Yes X No		
Flare Pit free of liquids	X Yes No Not Applicable		
Comments:			
Inspector Signature:			
Printed Name: Weldon Higgins			
Title: rig consultant			
Date: 6/19/09		Phone: 505-320-4871	

Record Retention: Submit with Closure
 File: EH&S Well Files

Exploration & Production
 San Juan Basin Operations
 720 So. Main / PO Box 640
 Aztec, NM 87410
 505-634-4200 / 505-634-4205 fax



Temporary Pit Inspection

FACILITY INFORMATION

Facility Name: Rosa Unit #162C	API #: 30 - 039 -
---------------------------------------	--------------------------

Pit Type:	Drilling	Workover	<input checked="" type="checkbox"/> Completion	Inspection:	Daily (Rig)	Weekly (Tech)
------------------	----------	----------	--	--------------------	-------------	---------------

Pit Liner intact (no visible tears)	<input checked="" type="checkbox"/> Yes	<input type="checkbox"/> No	If No, Report to EH&S immediately	Date	Time
Pit Properly Fenced (no fence on rig side if on site)	<input checked="" type="checkbox"/> Yes	<input type="checkbox"/> No	Not Required (if site fully fenced)		
Pit Slopes intact	<input checked="" type="checkbox"/> Yes	<input type="checkbox"/> No			
Adequate freeboard (liquid level 2 vertical feet from berm top)	<input checked="" type="checkbox"/> Yes	<input type="checkbox"/> No	Not Applicable		
Free oil or sheen present on pit	<input type="checkbox"/> Yes	<input checked="" type="checkbox"/> No			
Flare Pit free of liquids	<input checked="" type="checkbox"/> Yes	<input type="checkbox"/> No	Not Applicable		
Comments:					
Inspector Signature:					
Printed Name: Weldon Higgins					
Title: rig consultant					
Date: 6/20/09 Phone: 505-320-4871					

Record Retention: Submit with Closure
 File: EH&S Well Files

Exploration & Production
 San Juan Basin Operations
 720 So. Main / PO Box 640
 Aztec, NM 87410
 505-634-4200 / 505-634-4205 fax



Temporary Pit Inspection

FACILITY INFORMATION

Facility Name: Rosa Unit #162C	API #: 30 - 039 -
---------------------------------------	--------------------------

Pit Type: Drilling	Workover	X Completion	Inspection: Daily (Rig)	Weekly (Tech)
---------------------------	----------	--------------	--------------------------------	---------------

	X Yes	No	If No, Report to EH&S immediately	Date Reported:	Time
Pit Liner intact (no visible tears)	X				
Pit Properly Fenced (no fence on rig side if on site)	X		Not Required (if site fully fenced)		
Pit Slopes intact	X				
Adequate freeboard (liquid level 2 vertical feet from berm top)	X		Not Applicable		
Free oil or sheen present on pit		X			
Flare Pit free of liquids	X		Not Applicable		

Comments:

Inspector Signature:

Printed Name: Weldon Higgins

Title: rig consultant

Date: 6/21/09 Phone: 505-320-4871

Record Retention: Submit with Closure
 File: EH&S Well Files

Exploration & Production
 San Juan Basin Operations
 720 So. Main / PO Box 640
 Aztec, NM 87410
 505-634-4200 / 505-634-4205 fax



Temporary Pit Inspection

FACILITY INFORMATION

Facility Name: Rosa Unit #162C	API #: 30 - 039 -
---------------------------------------	--------------------------

Pit Type: Drilling Workover X Completion	Inspection: Daily (Rig) Weekly (Tech)
---	---

Pit Liner intact (no visible tears)	X Yes No If No, Report to EH&S immediately	Date Reported:	Time
Pit Properly Fenced (no fence on rig side if on site)	X Yes No Not Required (if site fully fenced)		
Pit Slopes intact	X Yes No		
Adequate freeboard (liquid level 2 vertical feet from berm top)	X Yes No Not Applicable		
Free oil or sheen present on pit	Yes X No		
Flare Pit free of liquids	X Yes No Not Applicable		
Comments:			
Inspector Signature:			
Printed Name: Weldon Higgins			
Title: rig consultant			
Date: 6/22/09		Phone: 505-320-4871	

Record Retention: Submit with Closure
 File: EH&S Well Files

Exploration & Production
 San Juan Basin Operations
 720 So. Main / PO Box 640
 Aztec, NM 87410
 505-634-4200 / 505-634-4205 fax



Temporary Pit Inspection

FACILITY INFORMATION

Facility Name: Rosa Unit #162C	API #: 30 - 039 -
---------------------------------------	--------------------------

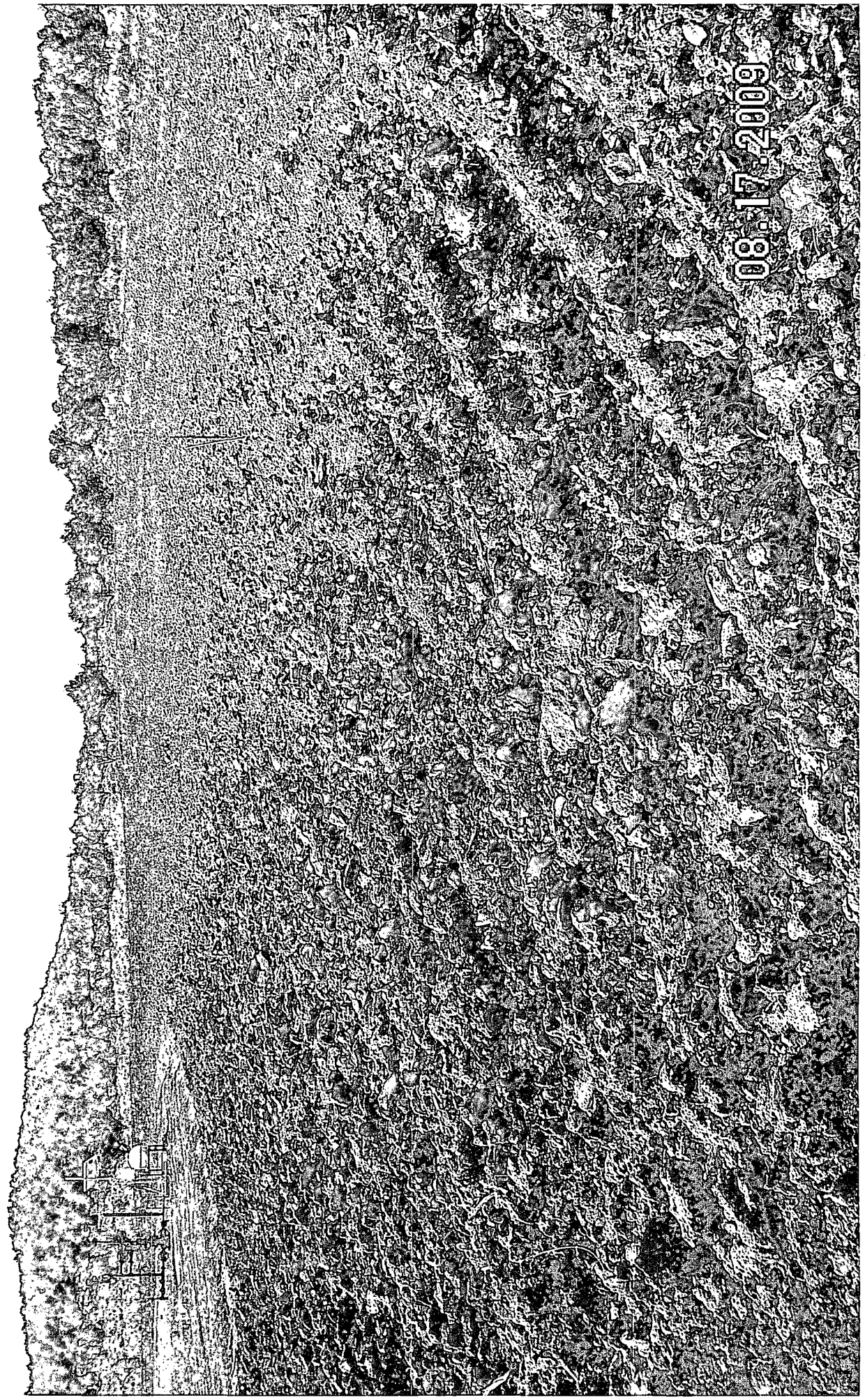
Pit Type: Drilling Workover X Completion	Inspection: Daily (Rig) Weekly (Tech)
---	---

Inspection Item	X Yes No		If No, Report to EH&S immediately	Date		Time
				Reported:		
Pit Liner intact (no visible tears)	X					
Pit Properly Fenced (no fence on rig side if on site)	X		Not Required (if site fully fenced)			
Pit Slopes intact	X					
Adequate freeboard (liquid level 2 <u>vertical</u> feet from berm top)	X		Not Applicable			
Free oil or sheen present on pit		X				
Flare Pit free of liquids	X		Not Applicable			
Comments:						
Inspector Signature:						
Printed Name: Weldon Higgins						
Title: rig consultant						
Date: 6/23/09			Phone: 505-320-4871			

Record Retention: Submit with Closure
 File: EH&S Well Files

MILICIAS
PROTECCION
COMUNITARIA
PROTECCION
COMUNITARIA
PROTECCION
COMUNITARIA
PROTECCION
COMUNITARIA

11-30-2009



08.17.2009