

District I

1625 N. French Dr., Hobbs, NM 88240

District II

1301 W. Grand Ave., Artesia, NM 88210

District III

1000 Rio Brazos Rd., Aztec, NM 87410

District IV

1220 S. St. Francis Dr., Santa Fe, NM 87505

State of New Mexico
Energy Minerals and Natural ResourcesDepartment
Oil Conservation Division
1220 South St. Francis Dr.
Santa Fe, NM 87505

Form C-144

July 21, 2008

For temporary pits, closed-loop systems, and below-grade tanks, submit to the appropriate NMOCD District Office.

For permanent pits and exceptions submit to the Santa Fe Environmental Bureau office and provide a copy to the appropriate NMOCD District Office.

**Pit, Closed-Loop System, Below-Grade Tank, or
Proposed Alternative Method Permit or Closure Plan Application**

- Type of action:
- ☐ Permit of a pit, closed-loop system, below-grade tank, or proposed alternative method
- ☒ Closure of a pit, closed-loop system, below-grade tank, or proposed alternative method
- ☐ Modification to an existing permit
- ☐ Closure plan only submitted for an existing permitted or non-permitted pit, closed-loop system, below-grade tank, or proposed alternative method

Instructions: Please submit one application (Form C-144) per individual pit, closed-loop system, below-grade tank or alternative request

Please be advised that approval of this request does not relieve the operator of liability should operations result in pollution of surface water, ground water or the environment. Nor does approval relieve the operator of its responsibility to comply with any other applicable governmental authority's rules, regulations or ordinances.

1
Operator: Burlington Resources Oil & Gas Company, LP OGRID#: 14538
Address: P.O. Box 4289, Farmington, NM 87499
Facility or well name: ATLANTIC C 3C
API Number: 30-045-35015 OCD Permit Number: _____
U/L or Qtr/Qtr: P(SE/SE) Section: 31 Township: 31N Range: 10W County: San Juan
Center of Proposed Design: Latitude: 36.85031 °N Longitude: 107.919 °W NAD: ☐ 1927 ☒ 1983
Surface Owner: ☒ Federal ☐ State ☐ Private ☐ Tribal Trust or Indian Allotment

2
☒ **Pit:** Subsection F or G of 19.15.17.11 NMAC
Temporary: ☒ Drilling ☐ Workover
☐ Permanent ☐ Emergency ☐ Cavitation ☐ P&A
☒ Lined ☐ Unlined Liner type: Thickness 20 mil ☒ LLDPE ☐ HDPE ☐ PVC ☐ Other _____
☒ String-Reinforced
Liner Seams: ☒ Welded ☒ Factory ☐ Other _____ Volume: 7700 bbl Dimensions L 120' x W 55' x D 12'

3
☐ **Closed-loop System:** Subsection H of 19.15.17.11 NMAC
Type of Operation: ☐ P&A ☐ Drilling a new well ☐ Workover or Drilling (Applies to activities which require prior approval of a permit or notice of intent)
☐ Drying Pad ☐ Above Ground Steel Tanks ☐ Haul-off Bins ☐ Other _____
☐ Lined ☐ Unlined Liner type: Thickness _____ mil ☐ LLDPE ☐ HDPE ☐ PVD ☐ Other _____
Liner Seams: ☐ Welded ☐ Factory ☐ Other _____

4
☐ **Below-grade tank:** Subsection I of 19.15.17.11 NMAC
Volume: _____ bbl Type of fluid: _____
Tank Construction material: _____
☐ Secondary containment with leak detection ☐ Visible sidewalls, liner, 6-inch lift and automatic overflow shut-off
☐ Visible sidewalls and liner ☐ Visible sidewalls only ☐ Other _____
Liner Type: Thickness _____ mil ☐ HDPE ☐ PVC ☐ Other _____

5
☐ **Alternative Method:**
Submittal of an exception request is required. Exceptions must be submitted to the Santa Fe Environmental Bureau office for consideration of approval.



6

Fencing: Subsection D of 19.15.17.11 NMAC (*Applies to permanent pit, temporary pits, and below-grade tanks*)

☐

Chain link, six feet in height, two strands of barbed wire at top (*Required if located within 1000 feet of a permanent residence, school, hospital, institution or church*)

☐

Four foot height, four strands of barbed wire evenly spaced between one and four feet

☐

Alternate. Please specify _____

7

Netting: Subsection E of 19.15.17.11 NMAC (*Applies to permanent pits and permanent open top tanks*)

☐

Screen

☐

Netting

☐

Other _____

☐

Monthly inspections (*If netting or screening is not physically feasible*)

8

Signs: Subsection C of 19.15.17.11 NMAC

☐

12" X 24", 2" lettering, providing Operator's name, site location, and emergency telephone numbers

☒

Signed in compliance with 19.15.3.103 NMAC

9

Administrative Approvals and Exceptions:

Justifications and/or demonstrations of equivalency are required. Please refer to 19.15.17 NMAC for guidance.

Please check a box if one or more of the following is requested, if not leave blank:

☐ Administrative approval(s): Requests must be submitted to the appropriate division district of the Santa Fe Environmental Bureau office for consideration of approval. (**Fencing/BGT Liner**)

☐ Exception(s): Requests must be submitted to the Santa Fe Environmental Bureau office for consideration of approval.

10

Siting Criteria (regarding permitting) 19.15.17.10 NMAC

Instructions: The applicant must demonstrate compliance for each siting criteria below in the application. Recommendations of acceptable source material are provided below. Requests regarding changes to certain siting criteria may require administrative approval from the appropriate district office or may be considered an exception which must be submitted to the Santa Fe Environmental Bureau Office for consideration of approval. Applicant must attach justification for request. Please refer to 19.15.17.10 NMAC for guidance. Siting criteria does not apply to drying pads or above grade-tanks associated with a closed-loop system.

Ground water is less than 50 feet below the bottom of the temporary pit, permanent pit, or below-grade tank.

- NM Office of the State Engineer - iWATERS database search; USGS; Data obtained from nearby wells

☐ Yes

☐ No

Within 300 feet of a continuously flowing watercourse, or 200 feet of any other watercourse, lakebed, sinkhole, or playa lake (measured from the ordinary high-water mark).

- Topographic map; Visual inspection (certification) of the proposed site

☐ Yes

☐ No

Within 300 feet from a permanent residence, school, hospital, institution, or church in existence at the time of initial application.

(*Applies to temporary, emergency, or cavitation pits and below-grade tanks*)

- Visual inspection (certification) of the proposed site; Aerial photo; Satellite image

☐ Yes

☐ No

☐ NA

Within 1000 feet from a permanent residence, school, hospital, institution, or church in existence at the time of initial application.

(*Applied to permanent pits*)

- Visual inspection (certification) of the proposed site; Aerial photo; Satellite image

☐ Yes

☐ No

☐ NA

Within 500 horizontal feet of a private, domestic fresh water well or spring that less than five households use for domestic or stock watering purposes, or within 1000 horizontal feet of any other fresh water well or spring, in existence at the time of initial application.

- NM Office of the State Engineer - iWATERS database search; Visual inspection (certification) of the proposed site.

☐ Yes

☐ No

Within incorporated municipal boundaries or within a defined municipal fresh water well field covered under a municipal ordinance adopted pursuant to NMSA 1978, Section 3-27-3, as amended

- Written confirmation or verification from the municipality; Written approval obtained from the municipality

☐ Yes

☐ No

Within 500 feet of a wetland.

- US Fish and Wildlife Wetland Identification map; Topographic map; Visual inspection (certification) of the proposed site

☐ Yes

☐ No

Within the area overlying a subsurface mine.

- Written confirmation or verification or map from the NM EMNRD - Mining and Mineral Division

☐ Yes

☐ No

Within an unstable area.

- Engineering measures incorporated into the design; NM Bureau of Geology & Mineral Resources; USGS; NM Geological Society; Topographic map

☐ Yes

☐ No

Within a 100-year floodplain

- FEMA map

☐ Yes

☐ No

11

Temporary Pits, Emergency Pits and Below-grade Tanks Permit Application Attachment Checklist Subsection B of 19.15.17.9 NMAC*Instructions: Each of the following items must be attached to the application. Please indicate, by a check mark in the box, that the documents are attached.*

- ☐ Hydrogeologic Report (Below-grade Tanks) - based upon the requirements of Paragraph (4) of Subsection B of 19.15.17.9 NMAC
- ☐ Hydrogeologic Data (Temporary and Emergency Pits) - based upon the requirements of Paragraph (2) of Subsection B of 19.15.17.9
- ☐ Siting Criteria Compliance Demonstrations - based upon the appropriate requirements of 19.15.17.10 NMAC
- ☐ Design Plan - based upon the appropriate requirements of 19.15.17.11 NMAC
- ☐ Operating and Maintenance Plan - based upon the appropriate requirements of 19.15.17.12 NMAC
- ☐ Closure Plan (Please complete Boxes 14 through 18, if applicable) - based upon the appropriate requirements of Subsection C of 19.15.17.9 NMAC and 19.15.17.13 NMAC

☐ Previously Approved Design (attach copy of design) API _____ or Permit _____

12

Closed-loop Systems Permit Application Attachment Checklist: Subsection B of 19.15.17.9 NMAC*Instructions: Each of the following items must be attached to the application. Please indicate, by a check mark in the box, that the documents are attached.*

- ☐ Geologic and Hydrogeologic Data (only for on-site closure) - based upon the requirements of Paragraph (3) of Subsection B of 19.15.17.9
- ☐ Siting Criteria Compliance Demonstrations (only for on-site closure) - based upon the appropriate requirements of 19.15.17.10 NMAC
- ☐ Design Plan - based upon the appropriate requirements of 19.15.17.11 NMAC
- ☐ Operating and Maintenance Plan - based upon the appropriate requirements of 19.15.17.12 NMAC
- ☐ Closure Plan (Please complete Boxes 14 through 18, if applicable) - based upon the appropriate requirements of Subsection C of 19.15.17.9 NMAC and 19.15.17.13 NMAC

☐ Previously Approved Design (attach copy of design) API _____

☐ Previously Approved Operating and Maintenance Plan API _____

13

Permanent Pits Permit Application Checklist: Subsection B of 19.15.17.9 NMAC*Instructions: Each of the following items must be attached to the application. Please indicate, by a check mark in the box, that the documents are attached.*

- ☐ Hydrogeologic Report - based upon the requirements of Paragraph (1) of Subsection B of 19.15.17.9 NMAC
- ☐ Siting Criteria Compliance Demonstrations - based upon the appropriate requirements of 19.15.17.10 NMAC
- ☐ Climatological Factors Assessment
- ☐ Certified Engineering Design Plans - based upon the appropriate requirements of 19.15.17.11 NMAC
- ☐ Dike Protection and Structural Integrity Design: based upon the appropriate requirements of 19.15.17.11 NMAC
- ☐ Leak Detection Design - based upon the appropriate requirements of 19.15.17.11 NMAC
- ☐ Liner Specifications and Compatibility Assessment - based upon the appropriate requirements of 19.15.17.11 NMAC
- ☐ Quality Control/Quality Assurance Construction and Installation Plan
- ☐ Operating and Maintenance Plan - based upon the appropriate requirements of 19.15.17.12 NMAC
- ☐ Freeboard and Overtopping Prevention Plan - based upon the appropriate requirements of 19.15.17.11 NMAC
- ☐ Nuisance or Hazardous Odors, including H₂S, Prevention Plan
- ☐ Emergency Response Plan
- ☐ Oil Field Waste Stream Characterization
- ☐ Monitoring and Inspection Plan
- ☐ Erosion Control Plan
- ☐ Closure Plan - based upon the appropriate requirements of Subsection C of 19.15.17.9 NMAC and 19.15.17.13 NMAC

14

Proposed Closure: 19.15.17.13 NMAC*Instructions: Please complete the applicable boxes, Boxes 14 through 18, in regards to the proposed closure plan.*

Type: ☐ Drilling ☐ Workover ☐ Emergency ☐ Cavitation ☐ P&A ☐ Permanent Pit ☐ Below-grade Tank ☐ Closed-loop System

☐ Alternative

Proposed Closure Method: ☐ Waste Excavation and Removal

☐ Waste Removal (Closed-loop systems only)

☐ On-site Closure Method (only for temporary pits and closed-loop systems)

☐ In-place Burial ☐ On-site Trench

☐ Alternative Closure Method (Exceptions must be submitted to the Santa Fe Environmental Bureau for consideration)

15

Waste Excavation and Removal Closure Plan Checklist (19.15.17.13 NMAC) *Instructions: Each of the following items must be attached to the closure plan.**Please indicate, by a check mark in the box, that the documents are attached.*

- ☐ Protocols and Procedures - based upon the appropriate requirements of 19.15.17.13 NMAC
- ☐ Confirmation Sampling Plan (if applicable) - based upon the appropriate requirements of Subsection F of 19.15.17.13 NMAC
- ☐ Disposal Facility Name and Permit Number (for liquids, drilling fluids and drill cuttings)
- ☐ Soil Backfill and Cover Design Specifications - based upon the appropriate requirements of Subsection H of 19.15.17.13 NMAC
- ☐ Re-vegetation Plan - based upon the appropriate requirements of Subsection I of 19.15.17.13 NMAC
- ☐ Site Reclamation Plan - based upon the appropriate requirements of Subsection G of 19.15.17.13 NMAC

Waste Removal Closure For Closed-loop Systems That Utilize Above Ground Steel Tanks or Haul-off Bins Only: (19.15.17.13.D NMAC)

Instructions: Please identify the facility or facilities for the disposal of liquids, drilling fluids and drill cuttings. Use attachment if more than two facilities are required.

Disposal Facility Name: _____ Disposal Facility Permit #: _____

Disposal Facility Name: _____ Disposal Facility Permit #: _____

Will any of the proposed closed-loop system operations and associated activities occur on or in areas that *will not* be used for future service and
☐ Yes (If yes, please provide the information) ☐ No

Required for impacted areas which will not be used for future service and operations:

- ☐ Soil Backfill and Cover Design Specification - based upon the appropriate requirements of Subsection H of 19.15.17.13 NMAC
☐ Re-vegetation Plan - based upon the appropriate requirements of Subsection I of 19.15.17.13 NMAC
☐ Site Reclamation Plan - based upon the appropriate requirements of Subsection G of 19.15.17.13 NMAC

Siting Criteria (Regarding on-site closure methods only): 19.15.17.10 NMAC

Instructions: Each siting criteria requires a demonstration of compliance in the closure plan. Recommendations of acceptable source material are provided below. Requests regarding changes to certain siting criteria may require administrative approval from the appropriate district office or may be considered an exception which must be submitted to the Santa Fe Environmental Bureau office for consideration of approval. Justifications and/or demonstrations of equivalency are required. Please refer to 19.15.17.10 NMAC for guidance.

Ground water is less than 50 feet below the bottom of the buried waste.

- NM Office of the State Engineer - iWATERS database search; USGS; Data obtained from nearby wells

☐ Yes ☐ No

☐ N/A

Ground water is between 50 and 100 feet below the bottom of the buried waste

- NM Office of the State Engineer - iWATERS database search; USGS; Data obtained from nearby wells

☐ Yes ☐ No

☐ N/A

Ground water is more than 100 feet below the bottom of the buried waste.

- NM Office of the State Engineer - iWATERS database search; USGS; Data obtained from nearby wells

☐ Yes ☐ No

☐ N/A

Within 300 feet of a continuously flowing watercourse, or 200 feet of any other significant watercourse or lakebed, sinkhole, or playa lake (measured from the ordinary high-water mark).

- Topographic map; Visual inspection (certification) of the proposed site

☐ Yes ☐ No

Within 300 feet from a permanent residence, school, hospital, institution, or church in existence at the time of initial application.

- Visual inspection (certification) of the proposed site; Aerial photo; satellite image

☐ Yes ☐ No

☐ Yes ☐ No

Within 500 horizontal feet of a private, domestic fresh water well or spring that less than five households use for domestic or stock watering purposes, or within 1000 horizontal feet of any other fresh water well or spring, in existence at the time of the initial application.

- NM Office of the State Engineer - iWATERS database; Visual inspection (certification) of the proposed site

☐ Yes ☐ No

Within incorporated municipal boundaries or within a defined municipal fresh water well field covered under a municipal ordinance adopted pursuant to NMSA 1978, Section 3-27-3, as amended.

- Written confirmation or verification from the municipality; Written approval obtained from the municipality

☐ Yes ☐ No

Within 500 feet of a wetland

- US Fish and Wildlife Wetland Identification map; Topographic map; Visual inspection (certification) of the proposed site

☐ Yes ☐ No

Within the area overlying a subsurface mine.

- Written confirmation or verification or map from the NM EMNRD-Mining and Mineral Division

☐ Yes ☐ No

Within an unstable area.

- Engineering measures incorporated into the design; NM Bureau of Geology & Mineral Resources; USGS; NM Geological Society; Topographic map

☐ Yes ☐ No

Within a 100-year floodplain.

- FEMA map

☐ Yes ☐ No

On-Site Closure Plan Checklist: (19.15.17.13 NMAC) *Instructions: Each of the following items must be attached to the closure plan. Please indicate, by a check mark in the box, that the documents are attached.*

- ☐ Siting Criteria Compliance Demonstrations - based upon the appropriate requirements of 19.15.17.10 NMAC
☐ Proof of Surface Owner Notice - based upon the appropriate requirements of Subsection F of 19.15.17.13 NMAC
☐ Construction/Design Plan of Burial Trench (if applicable) based upon the appropriate requirements of 19.15.17.11 NMAC
☐ Construction/Design Plan of Temporary Pit (for in place burial of a drying pad) - based upon the appropriate requirements of 19.15.17.11 NMAC
☐ Protocols and Procedures - based upon the appropriate requirements of 19.15.17.13 NMAC
☐ Confirmation Sampling Plan (if applicable) - based upon the appropriate requirements of Subsection F of 19.15.17.13 NMAC
☐ Waste Material Sampling Plan - based upon the appropriate requirements of Subsection F of 19.15.17.13 NMAC
☐ Disposal Facility Name and Permit Number (for liquids, drilling fluids and drill cuttings or in case on-site closure standards cannot be achieved)
☐ Soil Cover Design - based upon the appropriate requirements of Subsection H of 19.15.17.13 NMAC
☐ Re-vegetation Plan - based upon the appropriate requirements of Subsection I of 19.15.17.13 NMAC
☐ Site Reclamation Plan - based upon the appropriate requirements of Subsection G of 19.15.17.13 NMAC

19

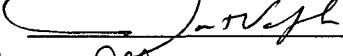
Operator Application Certification:

I hereby certify that the information submitted with this application is true, accurate and complete to the best of my knowledge and belief.

Name (Print): _____ Title: _____
 Signature: _____ Date: _____
 e-mail address: _____ Telephone: _____

20

OCD Approval: ☐ Permit Application (including closure plan) ☒ Closure ~~Plan (only)~~ ☐ OCD Conditions (see attachment)

OCD Representative Signature:  **Approval Date:** 1/25/10
Title: Compliance Officer **OCD Permit Number:** _____

21

Closure Report (required within 60 days of closure completion): Subsection K of 19.15.17.13 NMAC

Instructions: Operators are required to obtain an approved closure plan prior to implementing any closure activities and submitting the closure report. The closure report is required to be submitted to the division within 60 days of the completion of the closure activities. Please do not complete this section of the form until an approved closure plan has been obtained and the closure activities have been completed.

☒ **Closure Completion Date:** July 15, 2010

22

Closure Method:

☐ Waste Excavation and Removal ☒ On-site Closure Method ☐ Alternative Closure Method ☐ Waste Removal (Closed-loop systems only)
☐ If different from approved plan, please explain.

23

Closure Report Regarding Waste Removal Closure For Closed-loop Systems That Utilize Above Ground Steel Tanks or Haul-off Bins Only:

Instructions: Please identify the facility or facilities for where the liquids, drilling fluids and drill cuttings were disposed. Use attachment if more than two facilities were utilized.

Disposal Facility Name: _____ Disposal Facility Permit Number: _____

Disposal Facility Name: _____ Disposal Facility Permit Number: _____

Were the closed-loop system operations and associated activities performed on or in areas that *will not* be used for future service and operations?

☐ Yes (If yes, please demonstrate compliance to the items below) ☐ No

Required for impacted areas which will not be used for future service and operations:

- ☐ Site Reclamation (Photo Documentation)
☐ Soil Backfilling and Cover Installation
☐ Re-vegetation Application Rates and Seeding Technique

24

Closure Report Attachment Checklist: *Instructions: Each of the following items must be attached to the closure report. Please indicate, by a check mark in the box, that the documents are attached.*

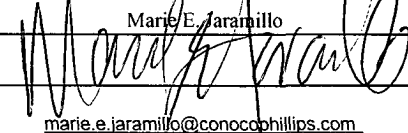
- ☒ Proof of Closure Notice (surface owner and division)
☒ Proof of Deed Notice (required for on-site closure)
☒ Plot Plan (for on-site closures and temporary pits)
☒ Confirmation Sampling Analytical Results (if applicable)
☐ Waste Material Sampling Analytical Results (if applicable)
☒ Disposal Facility Name and Permit Number
☒ Soil Backfilling and Cover Installation
☒ Re-vegetation Application Rates and Seeding Technique
☒ Site Reclamation (Photo Documentation)

On-site Closure Location: Latitude: 36.85045 °N Longitude: 107.91897 °W NAD ☐ 1927 ☒ 1983

25

Operator Closure Certification:

I hereby certify that the information and attachments submitted with this closure report is true, accurate and complete to the best of my knowledge and belief. I also certify that the closure complies with all applicable closure requirements and conditions specified in the approved closure plan.

Name (Print): Marie E. Jaramillo Title: Staff Regulatory Tech
 Signature:  Date: 8/19/10
 e-mail address: marie.e.jaramillo@conocophillips.com Telephone: 505-326-9865

Burlington Resources Oil Gas Company, LP
San Juan Basin
Closure Report

Lease Name: ATLANTIC C 3C

API No.: 30-045-35015

In accordance with Rule 19.15.17.13 NMAC the following information describes the closure of the temporary pit referenced above. All proper documentation regarding closure activities is being included with the C-144. The temporary pit for this location was constructed and location drilled before June 16, 2008 (effective date for Rule 19.15.17). While closure of the temporary pit did fall within the rule some dates for submittals are after the rig release date.

- Details on Capping and Covering, where applicable. **(See report)**
- Plot Plan (Pit Diagram) **(Included as an attachment)**
- Inspection Reports **(Included as an attachment)**
- Sampling Results **(Included as an attachment)**
- C-105 **(Included as an attachment)**
- Copy of Deed Notice will be filed with County Clerk **(Not required on Federal, State, or Tribal land as stated by FAQ dated October 30, 2008)**

General Plan:

1. All free standing liquids will be removed at the start of the pit closure process from the pit and disposed of in a division-approved facility or recycle, reuse or reclaim the liquids in a manner that the appropriate division district office approves.

All recovered liquids were disposed of at Basin Disposal (Permit #NM-01-005) and any sludge or soil required to be removed to facilitate closure was hauled to Envirotech Land Farm (Permit #NM-01-011) and JFJ Landfarm % IEI (Permit #NM-01-0010B).

2. The preferred method of closure for all temporary pits will be on-site burial, assuming that all the criteria listed in sub-section (B) of 19.15.17.13 are met.

The pit was closed using onsite burial.

3. The surface owner shall be notified of BR's closing of the temporary pit as per the approved closure plan using certified mail, return receipt requested.

The closure process notification to the landowner was sent via email. (See Attached)(Well located on Federal Land, certified mail is not required for Federal Land per BLM/OCD MOU.)

4. Within 6 months of the Rig Off status occurring BR will ensure that temporary pits are closed, re-contoured, and reseeded.

Provision 4 of the closure plan requirements were not met due to rig move off date as noted on C-105 which was prior to pit rule change. Burlington will ensure compliance with this rule in the future.

5. Notice of Closure will be given to the Aztec Division office between 72 hours and one week of closure via email, or verbally. The notification of closure will include the following:
 - i. Operator's name
 - ii. Location by Unit Letter, Section, Township, and Range. Well name and API number.

Notification is attached.

6. Liner of temporary pit shall be removed above "mud level" after stabilization. Removal of liner will consist of manually or mechanically cutting liner at mud level and removing all remaining liner. Care will be taken to remove "All" of the liner i.e., edges of liner entrenched or buried. All excessive liner will be disposed of at a licensed disposal facility.

Liner of temporary pit was removed above "mud level" after stabilization. Removal of the liner consisted of manually cutting liner at mud level and removing all remaining liner. Care was taken to remove "ALL" of the liner i.e., edges of liner entrenched or buried. All excessive liner was disposed of at a licensed disposal facility, (San Juan County Landfill).

7. Pit contents shall be mixed with non-waste containing, earthen material in order to achieve the solidification process. The solidification process will be accomplished using a combination of natural drying and mechanically mixing. Pit contents will be mixed with non-waste, earthen material to a consistency that is deemed a safe and stable. The mixing ratio shall not exceed 3 parts clean soil to 1 part pit contents.

Burlington mixed the Pit contents with non-waste containing, earthen material in order to achieve the solidification process. The solidification process was accomplished by using a combination of natural drying and mechanically mixing. Pit contents were mixed with non-waste, earthen material to a consistency that is deemed as safe and stable. The mixing ratio consisted of approximately 3 parts clean soil to 1 part pit contents.

8. A five point composite sample will be taken of the pit using sampling tools and all samples tested per Subsection B of 19.15.17.13(B)(1)(b). In the event that the criteria are not met, all contents will be handled per Subparagraph (a) of Paragraph (1) of Subsection B of 19.15.17.13 i.e., Dig and haul.

A five point composite sample was taken of the pit using sampling tools and all samples tested per Subsection B of 19.15.17.1 3(B)(1)(b). (Sample results attached).

Components	Tests Method	Limit (mg/Kg)	Results
Benzene	EPA SW-846 8021B or 8260B	0.2	10.8 ug/kg
BTEX	EPA SW-846 8021B or 8260B	50	954 ug/kG
TPH	EPA SW-846 418.1	2500	575mg/kg
GRO/DRO	EPA SW-846 8015M	500	79.8 mg/Kg
Chlorides	EPA 300.1	1000/500	90 mg/L

9. Upon completion of solidification and testing standards being passed, the pit area will be backfilled with compacted, non-waste containing, earthen material. A minimum of four feet of cover shall be achieved and the cover shall include one foot of suitable material to establish vegetation at the site, or the background thickness of topsoil, whichever is greater. If standard testing fails BR will dig and haul all contents pursuant to 19.15.17.13.i.a. After doing such, confirmation sampling will be conducted to ensure a release has not occurred.

The pit material passed solidification and testing standards. The pit area was then backfilled with compacted, non-waste containing, earthen material. More than four feet of cover was achieved and the cover included one foot of suitable material to establish vegetation at the site.

10. During the stabilization process if the liner is ripped by equipment the Aztec OCD office will be notified within 48 hours and the liner will be repaired if possible. If the liner can not be repaired then all contents will be excavated and removed.

The integrity of the liner was not damaged in the pit closure process.

11. Dig and Haul Material will be transported to the Envirotech Land Farm located 16 miles south of Bloomfield on Angel Peak Road, CR 7175. Permit # NM010011

Dig and Haul was not required.

12. Re-contouring of location will match fit, shape, line, form and texture of the surrounding. Re-shaping will include drainage control, prevent ponding, and prevent erosion. Natural drainages will be unimpeded and water bars and/or silt traps will be placed in areas where needed to prevent erosion on a large scale. Final re-contour shall have a uniform appearance with smooth surface, fitting the natural landscape.

The pit area was re-contoured to match fit, shape, line, form and texture of the surrounding area. Re-shaping included drainage control, to prevent ponding and erosion. Natural drainages were unimpeded and water bars and/or silt traps were placed in areas where needed to prevent erosion on a large scale. Final re-contour has a uniform appearance with smooth surface, fitting the natural landscape.

13. Notification will be sent to OCD when the reclaimed area is seeded.

Provision 13 was accomplished through complying with BLM seeding requirements as allowed by the BLM/OCD MOU.

14. BR shall seed the disturbed areas the first growing season after the operator closes the pit. Seeding will be accomplished via drilling on the contour whenever practical or by other division-approved methods. BLM or Forest Service stipulated seed mixes will be used on federal lands. Vegetative cover will equal 70% of the native perennial vegetative cover (un-impacted) consisting of at least three native plant species, including at least one grass, but not including noxious weeds, and maintain that cover through two successive growing seasons. Repeat seeding or planting will be continued until successful vegetative growth occurs.

Provision 14 was accomplished through complying with BLM seeding requirements as allowed by the BLM/OCD MOU.

15. The temporary pit will be located with a steel marker, no less than four inches in diameter, cemented in a hole three feet deep in the center of the onsite burial upon the abandonment of all the wells on the pad. The marker will be flush with the ground to allow access of the active well pad and for safety concerns. The marker will include a threaded collar to be used for future abandonment. The top of the marker will contain a welded steel 12" square plate that indicates the onsite burial of the temporary pit. The plate will be easily removable and a four foot tall riser will be threaded into the top of the collar marker and welded around the base with the operator's information at the time of all wells on the pad are abandoned. The operator's information will include the following: Operator Name, Lease Name, Well Name and number, Unit Number, Section, Township, Range and an indicator that the marker is an onsite burial location.

Provision 15 was accomplished by installing a steel marker in the temporary pit, no less than four inches in diameter, cemented in a hole three feet deep in the center of the onsite burial. The marker is flush with the ground to allow access of the active well pad and for safety concerns. The top of the marker contains a welded steel 12" square plate that indicates the onsite burial of the temporary pit. The plate contains the following: Operator Name, Lease Name, Well Name and number, Unit Number, Section, Township, Range and an indicator that the marker is an onsite burial location.

The plate will be easily removable and a four foot tall riser will be threaded into the top of the collar marker and welded around the base with the following operator's information at the time of all wells on the pad are abandoned. The riser will be labeled: BR, BLM, ATLANTIC C 3C, UL-P, Sec. 31, T 31N, R 10W, API # 30-045-35015

Jaramillo, Marie E

From: Jaramillo, Marie E
Sent: Wednesday, August 19, 2009 1:07 PM
To: 'mark_kelly@nm.blm.gov'
Subject: SURFACE OWNER NOTIFICATION

Mark

The subject well will have a temporary pit that will be closed on-site. Please let me know if you have any questions. Thanks

ATLANTIC C 3C ✓
SANDIA FEDERAL 1F

Marie Jaramillo
Staff Regulatory Tech.
ConocoPhillips
Office # (505) 326-9865
Fax # (505) 599-4062
<mailto:marie.e.jaramillo@conocophillips.com>

DISTRICT I
1625 N. French Dr., Hobbs, N.M. 88240

State of New Mexico
Energy, Minerals & Natural Resources Department

Form C-102
Revised October 12, 2005

DISTRICT II
1301 W. Grand Avenue, Artesia, N.M. 88210

Submit to Appropriate District Office
State Lease - 4 Copies
Fee Lease - 3 Copies

DISTRICT III
1000 Rio Brazos Rd., Aztec, N.M. 87410

OIL CONSERVATION DIVISION
1220 South St. Francis Dr.
Santa Fe, NM 87505

DISTRICT IV
1220 S. St. Francis Dr., Santa Fe, NM 87505

☐ AMENDED REPORT

WELL LOCATION AND ACREAGE DEDICATION PLAT

1 API Number		2 Pool Code		3 Pool Name BLANCO MESAVERDE	
4 Property Code		5 Property Name ATLANTIC C			6 Well Number 3 C
7 OGRID No.		8 Operator Name BURLINGTON RESOURCES OIL & GAS COMPANY LP			9 Elevation 6079'

10 Surface Location

UL or lot no.	Section	Township	Range	Lot Idn	Feet from the	North/South line	Feet from the	East/West line	County
P	31	31N	10W	20	875'	SOUTH	1180'	EAST	SAN JUAN

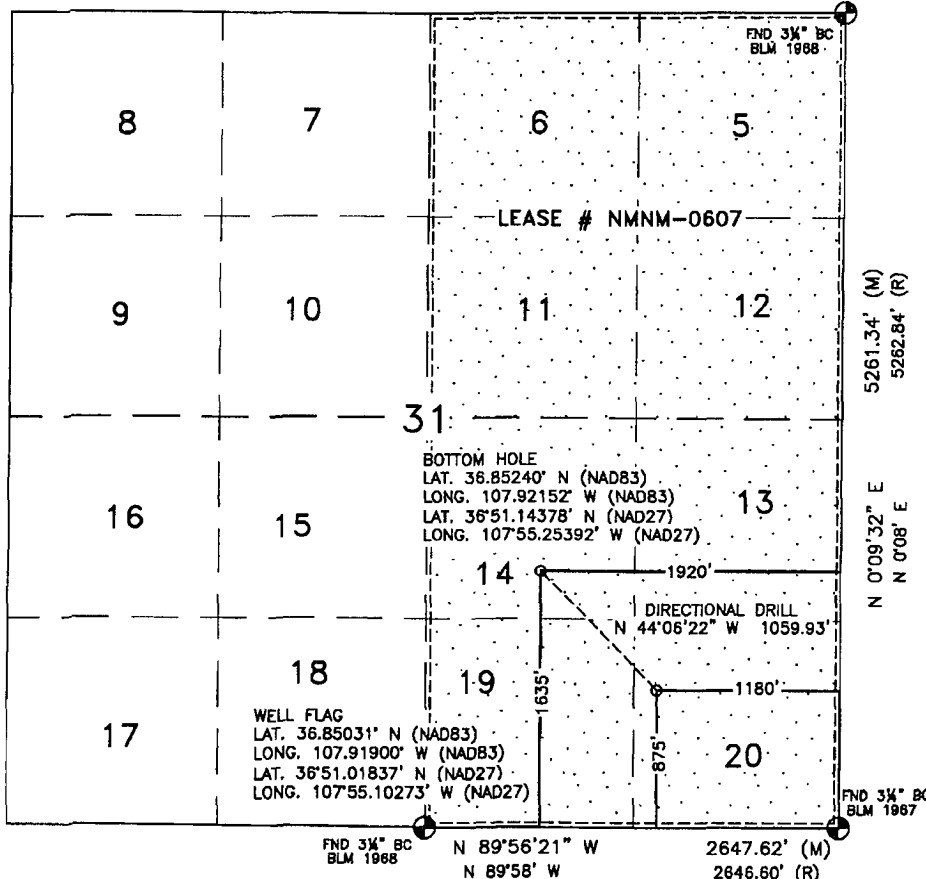
11 Bottom Hole Location If Different From Surface

UL or lot no.	Section	Township	Range	Lot Idn	Feet from the	North/South line	Feet from the	East/West line	County
J	31	31N	10W	14	1635'	SOUTH	1920'	EAST	SAN JUAN

12 Dedicated Acres 319.96 ACRES - E/2		13 Joint or Infill		14 Consolidation Code		15 Order No.			
--	--	--------------------	--	-----------------------	--	--------------	--	--	--

NO ALLOWABLE WILL BE ASSIGNED TO THIS COMPLETION UNTIL ALL INTERESTS HAVE BEEN CONSOLIDATED
OR A NON-STANDARD UNIT HAS BEEN APPROVED BY THE DIVISION

16



17 OPERATOR CERTIFICATION

I hereby certify that the information contained herein is true and complete to the best of my knowledge and belief, and that this organization either owns a working interest or unleased mineral interest in the land including the proposed bottom hole location or has a right to drill this well at this location pursuant to a contract with an owner or a compulsory pooling order heretofore entered by the division.

Signature _____ Date _____

Printed Name _____

18 SURVEYOR CERTIFICATION

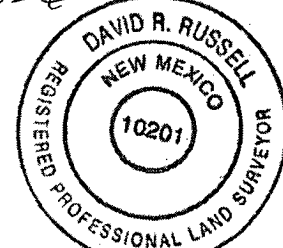
I hereby certify that the well location shown on this plat was plotted from field notes of actual surveys made by me or under my supervision, and that the same is true and correct to the best of my belief.

MAY 20, 2009

Date of Survey

Signature and Seal of Professional Surveyor:

David R. Russell



DAVID RUSSELL
Certificate Number 10201

BURLINGTON RESOURCES OIL & GAS COMPANY LP

ATLANTIC C #3 C

875' FSL & 1180' FEL

LOCATED IN THE SE/4 SE/4 OF SECTION 31,

T31N, R10W, N.M.P.M.,

SAN JUAN COUNTY, NEW MEXICO

GROUND ELEVATION: 6079', NAVD 88

FINISHED PAD ELEVATION: 6080.2', NAVD 88

WELL FLAG

LATITUDE: 36.85031° N

LONGITUDE: 107.91900° W

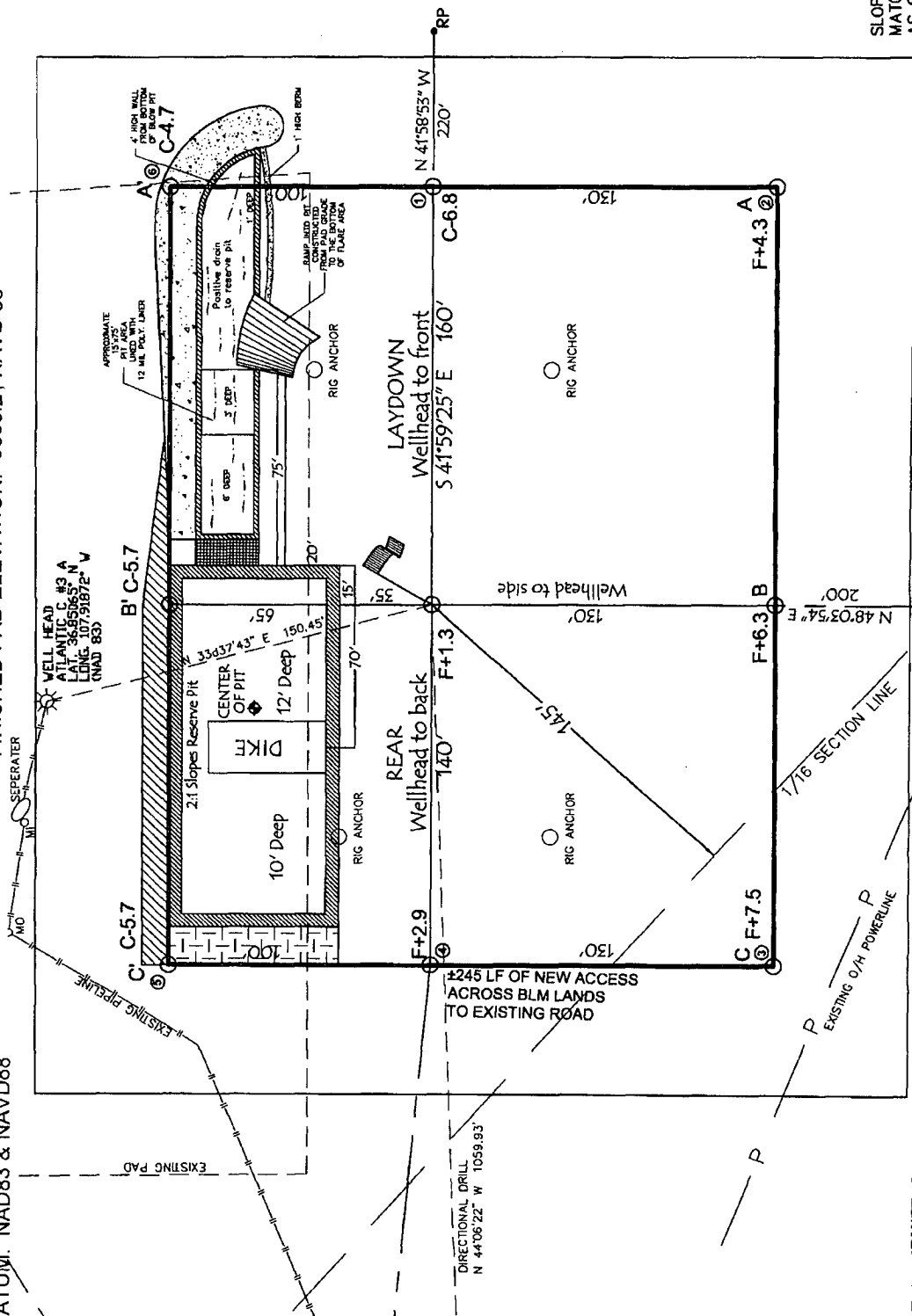
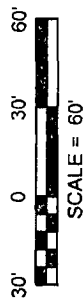
CENTER OF PIT

LATITUDE: 36.85045° N

LONGITUDE: 107.91897° W

ELEVATION: 6068.2'

DATUM: NAD83 & NAVD88



SLOPES TO BE CONSTRUCTED TO MATCH THE ORIGINAL CONTOURS AS CLOSE AS POSSIBLE.

NOTE: RESERVE PIT DIKE: TO BE 8' ABOVE DEEP SIDE (OVERFLOW - 3' WIDE AND 1' ABOVE SHALLOW SIDE). RUSSELL SURVEYING, INC. IS NOT LIABLE FOR UNDERGROUND UTILITIES OR PIPELINES. CONTRACTOR SHOULD CALL ONE-CALL FOR LOCATION OF ANY MARKED OR UNMARKED, BURIED PIPELINES OR CABLES ON WELL PAD, IN CONSTRUCTION ZONE AND/OR ACCESS ROAD AT LEAST TWO (2) WORKING DAYS PRIOR TO CONSTRUCTION.

TOTAL PERMITTED AREA
330' x 400' = 3.03 ACRES
SCALE: 1" = 60'

JOB No.: COPC311

DATE: 05/26/09

DRAWN BY: TWT

Russell Surveying
1409 W. Aztec Blvd. #2
Aztec, New Mexico 87410
(505) 334-8637





**EPA METHOD 8015 Modified
Nonhalogenated Volatile Organics
Total Petroleum Hydrocarbons**

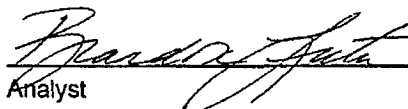
Client:	ConocoPhillips	Project #:	96052-1706
Sample ID:	Reserve Pit	Date Reported:	05-04-10
Laboratory Number:	53876	Date Sampled:	04-27-10
Chain of Custody No:	8883	Date Received:	04-27-10
Sample Matrix:	Soil	Date Extracted:	04-29-10
Preservative:	Cool	Date Analyzed:	05-03-10
Condition:	Intact	Analysis Requested:	8015 TPH

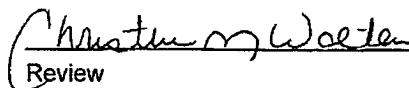
Parameter	Concentration (mg/Kg)	Det. Limit (mg/Kg)
Gasoline Range (C5 - C10)	27.1	0.2
Diesel Range (C10 - C28)	52.7	0.1
Total Petroleum Hydrocarbons	79.8	0.2

ND - Parameter not detected at the stated detection limit.

References: Method 8015B, Nonhalogenated Volatile Organics, Test Methods for Evaluating Solid Waste, SW-846, USEPA, December 1996.

Comments: **Atlantic C #3C**


Analyst


Review



**EPA METHOD 8015 Modified
Nonhalogenated Volatile Organics
Total Petroleum Hydrocarbons**

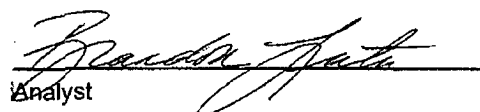
Client:	ConocoPhillips	Project #:	96052-1706
Sample ID:	Background	Date Reported:	05-04-10
Laboratory Number:	53875	Date Sampled:	04-27-10
Chain of Custody No:	8883	Date Received:	04-27-10
Sample Matrix:	Soil	Date Extracted:	04-29-10
Preservative:	Cool	Date Analyzed:	05-03-10
Condition:	Intact	Analysis Requested:	8015 TPH

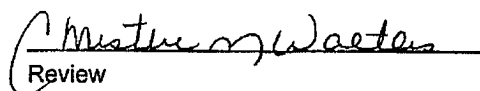
Parameter	Concentration (mg/Kg)	Det. Limit (mg/Kg)
Gasoline Range (C5 - C10)	ND	0.2
Diesel Range (C10 - C28)	ND	0.1
Total Petroleum Hydrocarbons	ND	0.2

ND - Parameter not detected at the stated detection limit.

References: Method 8015B, Nonhalogenated Volatile Organics, Test Methods for Evaluating Solid Waste, SW-846, USEPA, December 1996.

Comments: **Atlantic C #3C**


Analyst


Review



EPA Method 8015 Modified
Nonhalogenated Volatile Organics
Total Petroleum Hydrocarbons

Quality Assurance Report

Client:	QA/QC	Project #:	N/A
Sample ID:	05-03-10 QA/QC	Date Reported:	05-04-10
Laboratory Number:	53943	Date Sampled:	N/A
Sample Matrix:	Methylene Chloride	Date Received:	N/A
Preservative:	N/A	Date Analyzed:	05-03-10
Condition:	N/A	Analysis Requested:	TPH

	Report Date	Local RF	Global RF	% Difference	Accept Range
Gasoline Range C5 - C10	05-07-07	1.0180E+003	1.0184E+003	0.04%	0 - 15%
Diesel Range C10 - C28	05-07-07	1.0354E+003	1.0359E+003	0.04%	0 - 15%

Blank Conc. (mg/L - mg/Kg)	Concentration	Detection Limit
Gasoline Range C5 - C10	ND	0.2
Diesel Range C10 - C28	ND	0.1
Total Petroleum Hydrocarbons	ND	0.2

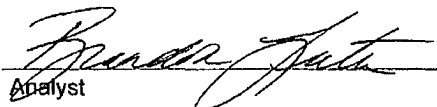
Duplicate Conc. (mg/Kg)	Sample	Duplicate	% Difference	Accept Range
Gasoline Range C5 - C10	ND	ND	0.0%	0 - 30%
Diesel Range C10 - C28	5.0	6.1	22.0%	0 - 30%

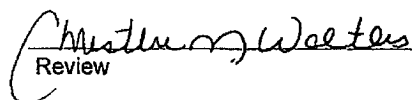
Spike Conc. (mg/Kg)	Sample	Spike Added	Spike Result	% Recovery	Accept Range
Gasoline Range C5 - C10	ND	250	269	108%	75 - 125%
Diesel Range C10 - C28	5.0	250	258	101%	75 - 125%

ND - Parameter not detected at the stated detection limit.

References: Method 8015B, Nonhalogenated Volatile Organics, Test Methods for Evaluating Solid Waste, SW-846, USEPA, December 1996.

Comments: QA/QC for Samples 53875 - 53876, 53925, 53943 and 53950 - 53954.


Analyst


Review



EPA METHOD 8021
AROMATIC VOLATILE ORGANICS

Client:	ConocoPhillips	Project #:	96052-1706
Sample ID:	Reserve Pit	Date Reported:	05-04-10
Laboratory Number:	53876	Date Sampled:	04-27-10
Chain of Custody:	8883	Date Received:	04-27-10
Sample Matrix:	Soil	Date Analyzed:	05-03-10
Preservative:	Cool	Date Extracted:	04-29-10
Condition:	Intact	Analysis Requested:	BTEX

Parameter	Concentration (ug/Kg)	Det. Limit (ug/Kg)
Benzene	10.8	0.9
Toluene	142	1.0
Ethylbenzene	72.0	1.0
p,m-Xylene	572	1.2
o-Xylene	157	0.9
Total BTEX	954	

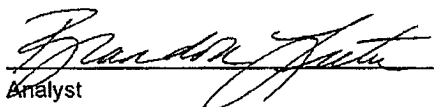
ND - Parameter not detected at the stated detection limit.

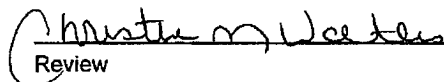
Surrogate Recoveries:	Parameter	Percent Recovery
	Fluorobenzene	99.7 %
	1,4-difluorobenzene	97.9 %
	Bromochlorobenzene	96.6 %

References: Method 5030B, Purge-and-Trap, Test Methods for Evaluating Solid Waste, SW-846, USEPA, December 1996.

Method 8021B, Aromatic Volatile Organics, Test Methods for Evaluating Solid Waste, SW-846, USEPA, December 1996.

Comments: Atlantic C #3C


Analyst


Review



EPA METHOD 8021
AROMATIC VOLATILE ORGANICS

Client:	ConocoPhillips	Project #:	96052-1706
Sample ID:	Background	Date Reported:	05-04-10
Laboratory Number:	53875	Date Sampled:	04-27-10
Chain of Custody:	8883	Date Received:	04-27-10
Sample Matrix:	Soil	Date Analyzed:	05-03-10
Preservative:	Cool	Date Extracted:	04-29-10
Condition:	Intact	Analysis Requested:	BTEX

Parameter	Concentration (ug/Kg)	Det. Limit (ug/Kg)
Benzene	1.5	0.9
Toluene	12.4	1.0
Ethylbenzene	7.0	1.0
p,m-Xylene	35.0	1.2
o-Xylene	14.5	0.9
Total BTEX	70.4	

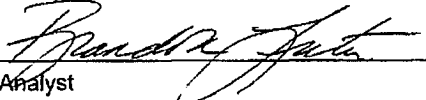
ND - Parameter not detected at the stated detection limit.

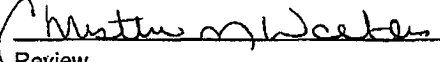
Surrogate Recoveries:	Parameter	Percent Recovery
	Fluorobenzene	97.9 %
	1,4-difluorobenzene	97.7 %
	Bromochlorobenzene	93.0 %

References: Method 5030B, Purge-and-Trap, Test Methods for Evaluating Solid Waste, SW-846, USEPA, December 1996.

Method 8021B, Aromatic Volatile Organics, Test Methods for Evaluating Solid Waste, SW-846, USEPA, December 1996.

Comments: Atlantic C #3C


Analyst


Review



**EPA METHOD 8021
AROMATIC VOLATILE ORGANICS**

Client:	N/A	Project #:	N/A
Sample ID:	05-03-BTX QA/QC	Date Reported:	05-03-10
Laboratory Number:	53942	Date Sampled:	N/A
Sample Matrix:	Soil	Date Received:	N/A
Preservative:	N/A	Date Analyzed:	05-03-10
Condition:	N/A	Analysis:	BTEX

Calibration and Detection Limits (ug/L)	I-Cal RF	C-Cal RF	%Diff	Blank Conc	Detect Limit
			Accept Range 0 - 15%		
Benzene	1.3332E+006	1.3359E+006	0.2%	ND	0.1
Toluene	1.2295E+006	1.2319E+006	0.2%	ND	0.1
Ethylbenzene	1.1051E+006	1.1073E+006	0.2%	ND	0.1
p,m-Xylene	2.7420E+006	2.7475E+006	0.2%	ND	0.1
o-Xylene	1.0425E+006	1.0446E+006	0.2%	ND	0.1

Duplicate Conc (ug/Kg)	Sample	Duplicate	%Diff	Accept Range	Detect Limit
Benzene	ND	ND	0.0%	0 - 30%	0.9
Toluene	24.0	23.6	1.7%	0 - 30%	1.0
Ethylbenzene	19.1	18.7	2.1%	0 - 30%	1.0
p,m-Xylene	196	196	0.3%	0 - 30%	1.2
o-Xylene	15.5	14.9	3.9%	0 - 30%	0.9

Spike Conc (ug/Kg)	Sample	Amount Spiked	Spiked Sample	% Recovery	Accept Range
Benzene	ND	50.0	48.4	96.8%	39 - 150
Toluene	24.0	50.0	71.1	96.1%	46 - 148
Ethylbenzene	19.1	50.0	65.4	94.7%	32 - 160
p,m-Xylene	196	100	274	92.5%	46 - 148
o-Xylene	15.5	50.0	60.1	91.8%	46 - 148

ND - Parameter not detected at the stated detection limit.

References: Method 5030B, Purge-and-Trap, Test Methods for Evaluating Solid Waste, SW-846, USEPA, December 1996.
Method 8021B, Aromatic and Halogenated Volatiles by Gas Chromatography Using Photoionization and/or Electrolytic Conductivity Detectors, SW-846, USEPA December 1996.

Comments: QA/QC for Samples 53875, 53876, 53942, 53943 and 53950 - 53954.

Analyst

Review



EPA METHOD 418.1
TOTAL PETROLEUM
HYDROCARBONS

Client:	ConocoPhillips	Project #:	96052-1706
Sample ID:	Reserve Pit	Date Reported:	05-04-10
Laboratory Number:	53876	Date Sampled:	04-27-10
Chain of Custody No:	8883	Date Received:	04-27-10
Sample Matrix:	Soil	Date Extracted:	04-30-10
Preservative:	Cool	Date Analyzed:	04-30-10
Condition:	Intact	Analysis Needed:	TPH-418.1

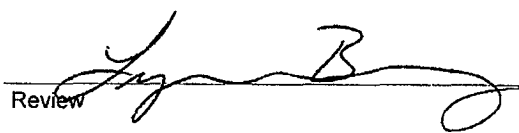
Parameter	Concentration (mg/kg)	Det. Limit (mg/kg)
Total Petroleum Hydrocarbons	575	20.3

ND = Parameter not detected at the stated detection limit.

References: Method 418.1, Petroleum Hydrocarbons, Total Recoverable, Chemical Analysis of Water and Waste, USEPA Storet No. 4551, 1978.

Comments: Atlantic C #3C


Analyst


Review



EPA METHOD 418.1
TOTAL PETROLEUM
HYDROCARBONS

Client:	ConocoPhillips	Project #:	96052-1706
Sample ID:	Background	Date Reported:	05-04-10
Laboratory Number:	53875	Date Sampled:	04-27-10
Chain of Custody No:	8883	Date Received:	04-27-10
Sample Matrix:	Soil	Date Extracted:	04-30-10
Preservative:	Cool	Date Analyzed:	04-30-10
Condition:	Intact	Analysis Needed:	TPH-418.1

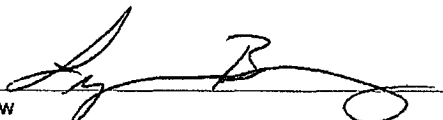
Parameter	Concentration (mg/kg)	Det. Limit (mg/kg)
Total Petroleum Hydrocarbons	33.8	20.3

ND = Parameter not detected at the stated detection limit.

References: Method 418.1, Petroleum Hydrocarbons, Total Recoverable, Chemical Analysis of Water and Waste, USEPA Storet No. 4551, 1978.

Comments: Atlantic C #3C


Analyst


Review



envirotech

Analytical Laboratory

EPA METHOD 418.1
TOTAL PETROLEUM
HYDROCARBONS
QUALITY ASSURANCE REPORT

Client:	QA/QC	Project #:	N/A
Sample ID:	QA/QC	Date Reported:	05-04-10
Laboratory Number:	04-30-TPH.QA/QC 53870	Date Sampled:	N/A
Sample Matrix:	Freon-113	Date Analyzed:	04-30-10
Preservative:	N/A	Date Extracted:	04-30-10
Condition:	N/A	Analysis Needed:	TPH

Calibration	I-Cal Date	C-Cal Date	I-Cal RF	C-Cal RF	% Difference	Accept Range
	04/22/2010	04-30-10	1,690	1,790	5.9%	+/- 10%

Blank Conc. (mg/Kg)	Concentration	Detection Limit
TPH	ND	20.3

Duplicate Conc. (mg/Kg)	Sample	Duplicate	% Difference	Accept Range
TPH	23.0	21.6	6.1%	+/- 30%

Spike Conc. (mg/Kg)	Sample	Spike Added	Spike Result	% Recovery	Accept Range
TPH	23.0	2,000	1,830	90.5%	80 - 120%

ND = Parameter not detected at the stated detection limit.

References: Method 418.1, Petroleum Hydrocarbons, Total Recoverable, Chemical Analysis of Water and Waste, USEPA Storet No. 4551, 1978.

Comments: QA/QC for Samples 53869 - 53876, 53882 and 53925.


Analyst


Review



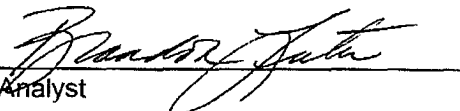
Chloride

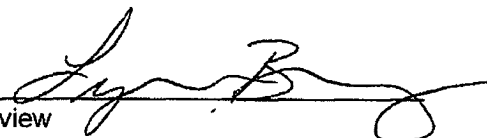
Client:	ConocoPhillips	Project #:	96052-1706
Sample ID:	Reserve Pit	Date Reported:	05-05-10
Lab ID#:	53876	Date Sampled:	04-27-10
Sample Matrix:	Soil	Date Received:	04-27-10
Preservative:	Cool	Date Analyzed:	05-04-10
Condition:	Intact	Chain of Custody:	8883

Parameter	Concentration (mg/Kg)
Total Chloride	90

Reference: U.S.E.P.A., 4500B, "Methods for Chemical Analysis of Water and Wastes", 1983.
Standard Methods For The Examination of Water And Waste Water", 18th ed., 1992.

Comments: Atlantic C #3C


Analyst


Review



envirotech
Analytical Laboratory


Chloride

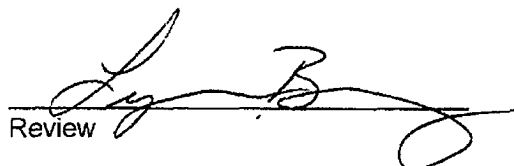
Client:	ConocoPhillips	Project #:	96052-1706
Sample ID:	Background	Date Reported:	05-05-10
Lab ID#:	53875	Date Sampled:	04-27-10
Sample Matrix:	Soil	Date Received:	04-27-10
Preservative:	Cool	Date Analyzed:	05-04-10
Condition:	Intact	Chain of Custody:	8883

Parameter	Concentration (mg/Kg)
Total Chloride	10

Reference: U.S.E.P.A., 4500B, "Methods for Chemical Analysis of Water and Wastes", 1983.
Standard Methods For The Examination of Water And Waste Water", 18th ed., 1992.

Comments: Atlantic C #3C


Analyst


Review

Submit To Appropriate District Office
Two Copies
District I
1625 N. French Dr., Hobbs, NM 88240
District II
1301 W. Grand Avenue, Artesia, NM 88210
District III
1000 Rio Brazos Rd., Aztec, NM 87410
District IV
1220 S. St. Francis Dr., Santa Fe, NM 87505

State of New Mexico
Energy, Minerals and Natural Resources

Oil Conservation Division
1220 South St. Francis Dr.
Santa Fe, NM 87505

Form C-105
July 17, 2008

1. WELL API NO.

30-045-35015

2. Type of Lease

☐ STATE ☐ FEE ☒ FED/INDIAN

3. State Oil & Gas Lease No.

NMNM-0607

WELL COMPLETION OR RECOMPLETION REPORT AND LOG

4. Reason for filing:

☐ **COMPLETION REPORT** (Fill in boxes #1 through #31 for State and Fee wells only)

☒ **C-144 CLOSURE ATTACHMENT** (Fill in boxes #1 through #9, #15 Date Rig Released and #32 and/or #33; attach this and the plat to the C-144 closure report in accordance with 19.15.17.13.K NMAC)

7. Type of Completion:

☒ NEW WELL ☐ WORKOVER ☐ DEEPENING ☐ PLUGBACK ☐ DIFFERENT RESERVOIR ☐ OTHER

8. Name of Operator

Burlington Resources Oil Gas Company, LP

9. OGRID

14538

10. Address of Operator

PO Box 4298, Farmington, NM 87499

11. Pool name or Wildcat

12. Location	Unit Ltr	Section	Township	Range	Lot	Feet from the	N/S Line	Feet from the	E/W Line	County
Surface:										
BH:										

13. Date Spudded	14. Date T.D. Reached	15. Date Rig Released 02/03/10	16. Date Completed (Ready to Produce)	17. Elevations (DF and RKB, RT, GR, etc.)
18. Total Measured Depth of Well	19. Plug Back Measured Depth	20. Was Directional Survey Made?	21. Type Electric and Other Logs Run	

22. Producing Interval(s), of this completion - Top, Bottom, Name

23. CASING RECORD (Report all strings set in well)

CASING SIZE	WEIGHT LB./FT.	DEPTH SET	HOLE SIZE	CEMENTING RECORD	AMOUNT PULLED

24. LINER RECORD					25. TUBING RECORD		
SIZE	TOP	BOTTOM	SACKS CEMENT	SCREEN	SIZE	DEPTH SET	PACKER SET

26. Perforation record (interval, size, and number)

27. ACID, SHOT, FRACTURE, CEMENT, SQUEEZE, ETC.	
DEPTH INTERVAL	AMOUNT AND KIND MATERIAL USED

28. PRODUCTION

Date First Production		Production Method (Flowing, gas lift, pumping - Size and type pump)				Well Status (Prod. or Shut-in)	
Date of Test	Hours Tested	Choke Size	Prod'n For Test Period	Oil - Bbl	Gas - MCF	Water - Bbl.	Gas - Oil Ratio
Flow Tubing Press.	Casing Pressure	Calculated 24-Hour Rate	Oil - Bbl.	Gas - MCF	Water - Bbl.	Oil Gravity - API - (Corr.)	

29. Disposition of Gas (Sold, used for fuel, vented, etc.)

30. Test Witnessed By

31. List Attachments

32. If a temporary pit was used at the well, attach a plat with the location of the temporary pit.

33. If an on-site burial was used at the well, report the exact location of the on-site burial:

Latitude **36.85045°N** Longitude **107.91897°W** NAD ☐ 1927 ☒ 1983

I hereby certify that the information shown on both sides of this form is true and complete to the best of my knowledge and belief

Signature

Printed

Name Marie E. Jaramillo

Title: Staff Regulatory Tech

Date: 8/19/2010

E-mail Address **mariele.jaramillo@conocophillips.com**



Pit Closure Form:

Date: 7/15/10

Well Name: Atlantic C3C

Footages: 875 FNL 1180 FEL Unit Letter: P

Section: 3L, T-21-N, R-10-W, County: San Juan State: NM

Contractor Closing Pit: Ave

Construction Inspector: S. McGlasson Date: 7/15/10

Inspector Signature: [Signature]

Jaramillo, Marie E

From: Payne, Wendy F
Sent: Thursday, June 24, 2010 1:26 PM
To: (Brandon.Powell@state.nm.us); 'brook@crossfire-llc.com'; GRP:SJBU Regulatory; 'Isaiah Lee'; 'tevans48@msn.com'; (bko@digii.net); Mark Kelly; Robert Switzer; Sherrie Landon; Bassing, Kendal R.; Chavez, Virgil E; Elmer Perry; Faver Norman; Fred Martinez; Jared Chavez; Lowe, Terry; Payne, Wendy F; Spearman, Bobby E; 'Steve McGlasson'; Tally, Ethel; Becker, Joey W; Bowker, Terry D; Gordon Chenault; GRP:SJBU Production Leads; Hockett, Christy R; Johnson, Kirk L; Bassing, Kendal R.; Kennedy, Jim R; Lopez, Richard A; O'Nan, Mike J.; Peace, James T; Pierce, Richard M; Poulson, Mark E; Smith, Randall O; Spearman, Bobby E; Stamets, Steve A; Thacker, LARRY; Work, Jim A; Blair, Maxwell O; Blakley, Mac; Clark, Joni E; Farrell, Juanita R; Gillette, Steven L (Gray Surface Specialties and Consulting, Ltd.); Greer, David A; Hines, Derek J (Finney Land Co.); Maxwell, Mary Alice; McWilliams, Peggy L; Seabolt, Elmo F; Stallsmith, Mark R
Cc: 'acedragline@yahoo.com'
Subject: Reclamation Notice: Atlantic C 3C
Importance: High
Attachments: Atlantic C 3C.pdf

Ace Services will move a tractor to the **Atlantic C 3C** to start the reclamation process on Thursday, July 1, 2010. Please contact Steve McGlasson (330-4183) if you have questions or need further assistance. Driving directions are attached.



Atlantic C 3C.pdf
(207 KB)

Burlington Resources Well- Network #: 10262541 - Activity code D250 (reclamation) & D260 (pit closure)

San Juan County, NM

Atlantic C 3C –BLM surface / BLM minerals

Twin: Atlantic C 3C

875' FNL, 1180' FEL

SEC. 31, T31N, R10W

Unit Letter 'P'

Lease #: NM-0607

Latitude: 36° 51 min 01.11600 sec N (NAD 83)

Longitude: 107° 55 min 08.40000 sec W (NAD83)

API #: 30-045-35015

Wendy Payne
ConocoPhillips-SJBU
505-326-9533
Wendy.F.Payne@conocophillips.com



Reclamation Form:

Date: 7/26/10

Well Name: Atlantic C3L

Footages: 875 FNL 1180 FEL Unit Letter: P

Section: 31, T-31-N, R-10-W, County: San Juan State: NM

Reclamation Contractor: Acc

Reclamation Date: 7/16/10

Road Completion Date: 7/22/10

Seeding Date: 7/21/10

****PIT MARKER STATUS (When Required):**

MARKER PLACED : Called 7/22/10 (DATE)

LATITUDE: _____

LONGITUDE: _____

Construction Inspector: S. McGlasson Date: 7/26/10

Inspector Signature: [Signature]

BLM

Pic's in folder
7/29/10
Need pit mkr
set pic



RESOURCES

ATLANTIC C #3C

TITUDE 36° 51 MIN. 01.11600 SEC. N (NAD 83)

LONGITUDE 107° 55 MIN. 08.40000 SEC. W (NAD 83)

UNIT P SEC 31 T31N R10W

SECTION: NW1/4 SE1/4 SEC 31 T31N R10W

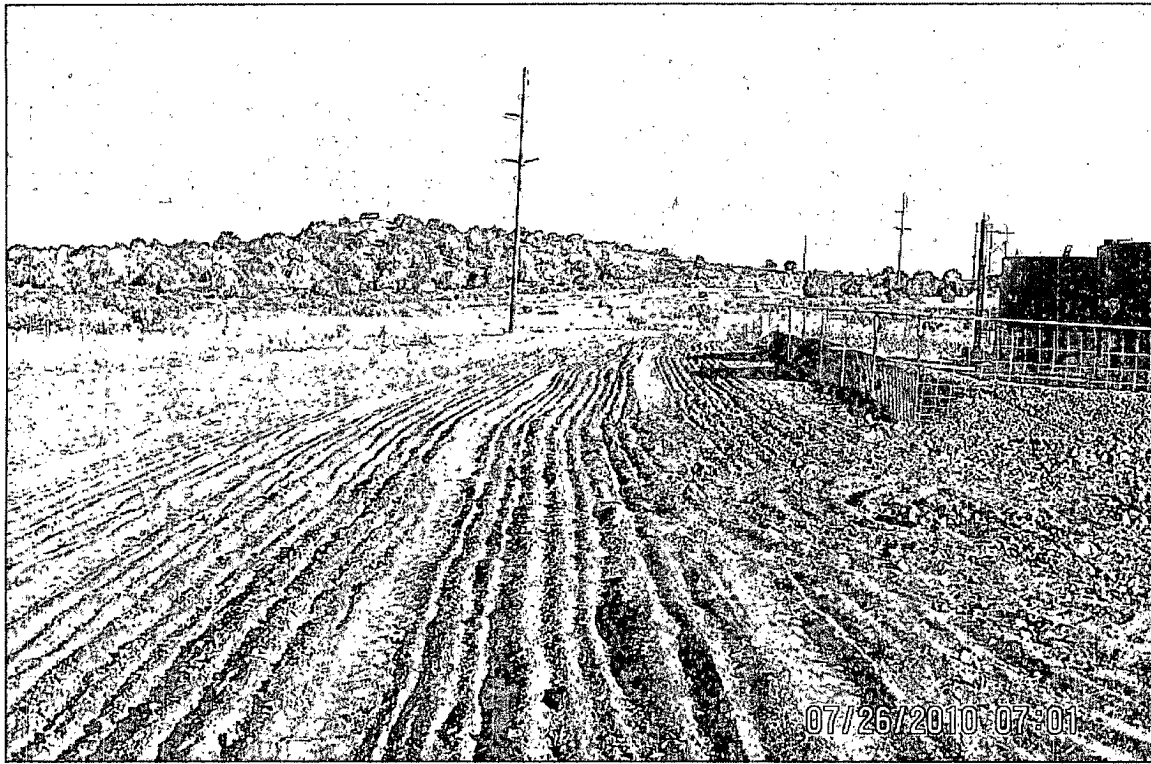
75' FBL 1180' FEL / API# 30-045-3501

LEASE# NM-0607 ELEV. 6079

SAN JUAN COUNTY, NEW MEXICO

EMERGENCY CONTACT: 1-505-324-5170

07/26/2010 07:01



WELL PAD SAFETY AND ENVIRONMENTAL CHECK LIST

WELL NAME: ATLANTIC C 3C

API#: 30-045-35015

DATE	INSPECTOR	SAFETY CHECK	LOCATION CHECK	PICTURES TAKEN	COMMENTS
11/30/09	JARED CHAVEZ	X	X	X	PIT AND LOCATION IN GOOD CONDITION
12/07/09	JARED CHAVEZ	X	X	X	PIT AND LOCATION IN GOOD CONDITION
12/14/09	JARED CHAVEZ	X	X	X	PIT AND LOCATION IN GOOD CONDITION
12/21/09	JARED CHAVEZ	X	X	X	PIT AND LOCATION IN GOOD CONDITION
01/04/10	JARED CHAVEZ	X	X	X	PIT AND LOCATION IN GOOD CONDITION
01/07/10	JARED CHAVEZ	X	X	X	PIT AND LOCATION IN GOOD CONDITION
01/15/10	JARED CHAVEZ	X	X	X	PIT AND LOCATION IN GOOD CONDITION
02/05/10	FREDDIE MARTINEZ	X	X	X	FENCE WAS DOWN IN FRONT OF RESERVE PIT CONTACTED NORMEN TO GET A HOLD OF DRILLING ONSITE TO GET SOME ONE TO PUT FENCE BACK UP. ROAD HAS RUTS SO DOES LOCATION
02/12/10	FREDDIE MARTINEZ	X	X	X	FENCE NEEDS TIGHTENED WHEN RIG MOVE'S FF ROAD HAS RUTS SO DOES LOCATION
02/26/10	FREDDIE MARTINEZ	X	X	X	ROAD IS BAD, DEEP RUTS

03/04/10	FREDDIE MARTINEZ	X	X	X	X	
03/16/10	FREDDIE MARTINEZ	X	X	X	X	
03/22/10	FREDDIE MARTINEZ	X	X	X	X	
03/29/10	FREDDIE MARTINEZ	X	X	X	X	
04/05/10	FREDDIE MARTINEZ	X	X	X	X	RIG ON LOCATION
04/12/10	FREDDIE MARTINEZ	X	X	X	X	PIT NEEDS PULLED, CONTACT DAWN TO PULL PIT
04/26/10	FREDDIE MARTINEZ	X	X	X	X	
05/18/10	FREDDIE MARTINEZ	X	X	X	X	
05/24/10	FREDDIE MARTINEZ	X	X	X	X	
06/01/10	FREDDIE MARTINEZ	X	X	X	X	
06/07/10	FREDDIE MARTINEZ	X	X	X	X	
06/21/10	FREDDIE MARTINEZ	X	X	X	X	
06/28/10	FREDDIE MARTINEZ	X	X	X	X	
07/06/10	FREDDIE MARTINEZ	X	X	X	X	