

RECEIVED

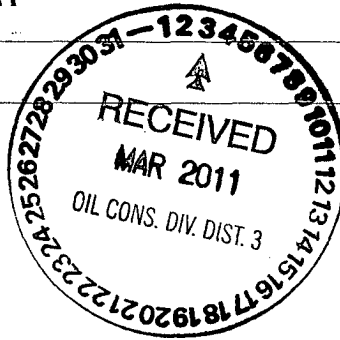
MAR 01 2011

submitted in lieu of Form 3160-5

UNITED STATES
DEPARTMENT OF THE INTERIOR
BUREAU OF LAND MANAGEMENT

Farmington Field Office
Bureau of Land Management

Sundry Notices and Reports on Wells



1. Type of Well
GAS

5. Lease Number
SF-078423

6. If Indian, All. or
Tribe Name

2. Name of Operator

BURLINGTON

RESOURCES OIL & GAS COMPANY LP

7. Unit Agreement Name
San Juan 29-7 Unit

3. Address & Phone No. of Operator

PO Box 4289, Farmington, NM 87499 (505) 326-9700

8. Well Name & Number
San Juan 29-7 Unit 155

9. API Well No.

30-039-25710

4. Location of Well, Footage, Sec., T, R, M

Unit A (NENE), 1085' FNL & 1040' FEL, Section 9, T29N, R7W, NMPM

10. Field and Pool
Blanco Pictured Cliffs

11. County and State
Rio Arriba, NM

12. CHECK APPROPRIATE BOX TO INDICATE NATURE OF NOTICE, REPORT, OTHER DATA

Type of Submission

☒ Notice of Intent

☐ Subsequent Report

☐ Final Abandonment

Type of Action

☒ Abandonment

☐ Recompletion

☐ Plugging

☐ Casing Repair

☐ Altering Casing

☐ Change of Plans

☐ New Construction

☐ Non-Routine Fracturing

☐ Water Shut off

☐ Conversion to Injection

☐ Other -

13. Describe Proposed or Completed Operations

Burlington Resources requests permission to P&A the subject well per the attached procedures, current and proposed wellbore schematic.

14. I hereby certify that the foregoing is true and correct.

Signed Crystal Tafoya Crystal Tafoya

Title: Staff Regulatory Technician

Date 2/28/11

(This space for Federal or State Office use)

APPROVED BY Original Signed: Stephen Mason

Title

Date

MAR 03 2011

CONDITION OF APPROVAL, if any:

Title 18 U.S.C. Section 1001, makes it a crime for any person knowingly and willfully to make any department or agency of the United States any false, fictitious or fraudulent statements or representations as to any matter within its jurisdiction.

NMOCD

Expense – P&A

February, 7 2011

SAN JUAN 29-7 Unit 1155 (PC)

Pictured Cliffs

1085' FNL, 1040' FEL, Section 9, T29N, R07W, San Juan County, New Mexico

API 30-039-25710 / Lat: 36 44'40.056" / Long: 107 34'12.936"

Note: All cement volumes use 100% excess outside pipe and 50' excess inside. The stabilizing wellbore fluid will be 8.3 ppg, sufficient to balance all exposed formation pressures. All cement will be Class B, mixed at 15.6 ppg with a 1.18 cf/sx yield.

1. This project requires a NMOCD C-144 CLEZ Closed-Loop System Permit for the use of an A-Plus steel tank to handle waste fluids circulated from the well and cement wash up.
2. Install and test location rig anchors. Comply with all NMOCD, BLM, and Operator safety regulations. MOL and RU daylight pulling unit. Conduct safety meeting for all personnel on location. Record casing and bradenhead pressures. NU relief line and blow down well. Kill well with water as necessary. ND wellhead and NU BOP. Function test BOP.
3. Rods: Yes____, No X____, Unknown____.
Tubing: Yes____, No X____, Unknown____ Size____, Length____.
Packer: Yes____, No X____, Unknown____ Type____.
If this well has rods or a packer, then modify the work sequence in step #2 as appropriate.
4. **Plug #1 (Pictured Cliffs Perforations and Fruitland top: 2935' – 2671')**: RIH and set 3-1/2" CIBP at 2935'. Load casing and circulate well clean. Pressure test tubing to 1000#. Pressure test casing to 800#. *If casing does not test, then spot or tag subsequent plugs as appropriate.* Mix 14 sxs Class B cement and spot above CIBP to isolate the PC perforations and Fruitland top. PUH.
5. ¹⁹⁰⁹**Plug #2 (Kirtland & Ojo Alamo, 2225' - ~~1950~~)**: Mix 15 sxs Class B cement and spot a balanced plug inside casing to cover Kirtland and Ojo Alamo tops. PUH.
6. **Plug #3 (Nacimiento 692' – surface)**: Attempt to pressure test the bradenhead annulus to 300 PSI; note the volume to load. If the BH annulus holds pressure, then establish circulation out casing valve with water. Mix 31 sxs Class B cement and spot a balanced plug from 692' to surface, circulate good cement out casing valve. TOH and LD tubing. Shut well in and WOC. If the BH annulus does not test, then perforate at the appropriate depth and attempt to circulate cement to surface filling the casing from 692' and the annulus from the squeeze holes to surface. Shut in well and WOC.
7. ND BOP and cut off wellhead below surface casing flange. Install P&A marker with cement to comply with regulations. RD, MOL and cut off anchors. Restore location per BLM stipulations.

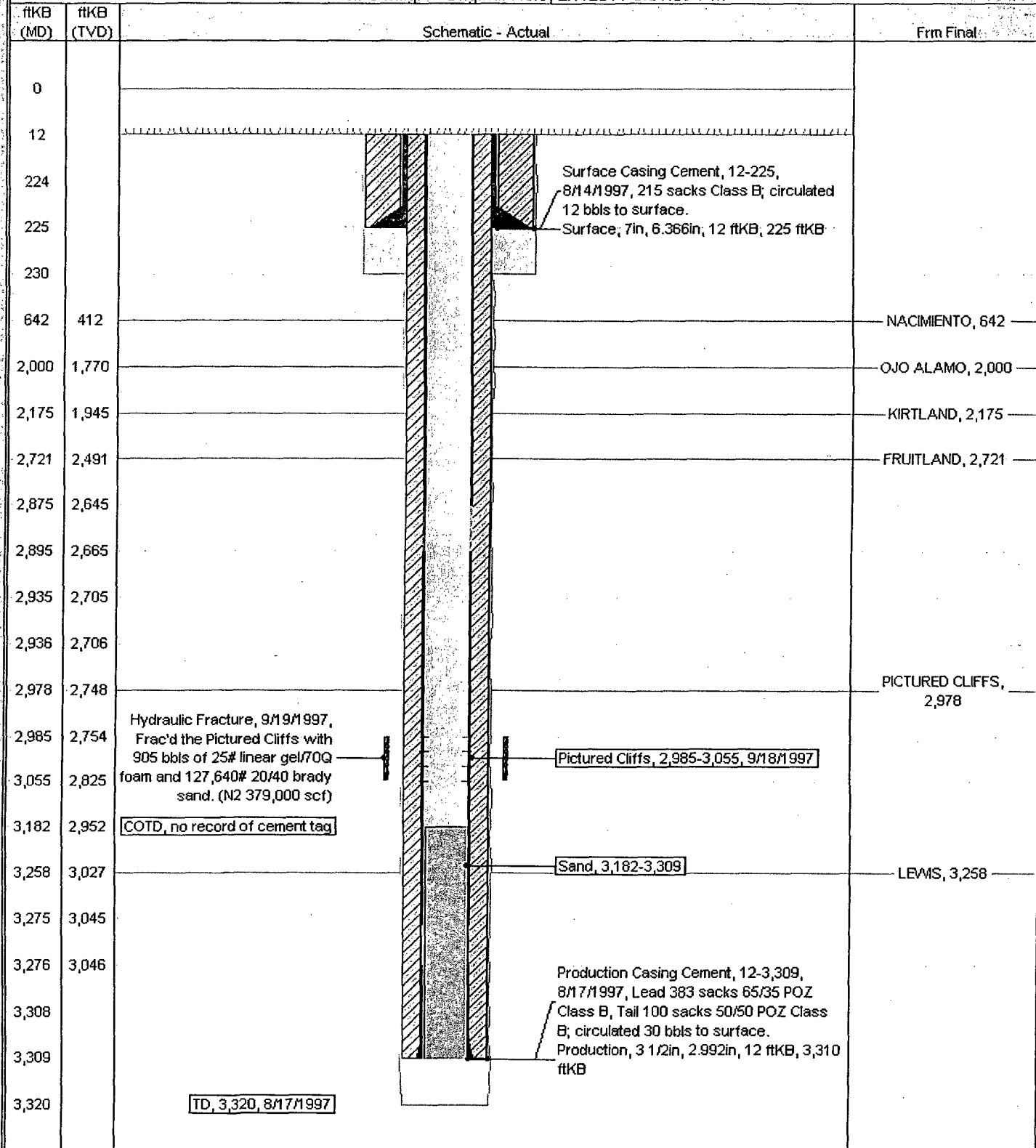
Current Schematic

ConocoPhillips

Well Name: SAN JUAN 29-7 UNIT #155

API/UVI# 3003925710	Surface Legal Location 100% F.R., 100% S.F., 100% G.P., 100% H.P.	Field Name BLANCO P.C. SOUTH (EAST) FORM	License No.	State/Province NEW MEXICO	Well Configuration Type Edit
Ground Elevation (ft) 6,172.00	Original KB/RT Elevation (ft) 6,184.00	KB-Grout Distance (ft) 12.00	KB-Casing Flange Distance (ft) 6,184.00	KB-Tubing Hanger Distance (ft) 6,184.00	

Well Config: - Original Hole, 2/7/2011 3:51:39 PM



Proposed Schematic

ConocoPhillips

Well Name: SAN JUAN 29-7 UNIT #155

API / UWI	Surface Legal Location	Field Name	License No.	State/Province	Well Configuration Type	Edit
3003925710	1005-FNL 1005-FEL 05-02294000V	BLANCO P.E. SOUTH (CASS) 0000A		NEW MEXICO		
Ground Elevation (ft)	Original KB/RT Elevation (ft)	KB-Grout Distance (ft)	KB-Casing Flange Distance (ft)	KB-Tubing Hanger Distance (ft)		
6,172.00	6,184.00	12.00	6,184.00	6,184.00		

Well Config: - Original Hole, 1/1/2020

ftKB (MD)	ftKB (TVD)	Schematic - Actual	Frm Final
0			
12			
224			
225		Surface Casing Cement, 12-225, 8/14/1997, 215 sacks Class B, circulated 12 bbls to surface.	
230		Surface, 7in, 6.366in, 12 ftKB, 225 ftKB	
642	412		NACIMIENTO, 642
692	462		
1,950	1,720	Plug 3, 12-692, 1/1/2020, Mix 33 sxs Class B cement and spot a balanced plug from 692' to surface,	
2,000	1,770		OJO ALAMO, 2,000
2,175	1,945		KIRTLAND, 2,175
2,225	1,995	Plug 2, 1,950-2,225, 1/1/2020, Mix 15 sxs Class B cement and spot a balanced plug inside casing to cover Kirtland and Ojo Alamo tops	
2,671	2,441		
2,721	2,491		FRUITLAND, 2,721
2,875	2,645		
2,895	2,665	Plug 1, 2,671-2,935, 1/1/2020, Mix 14 sxs Class B cement and spot above CIBP to isolate the PC perforations and Fruitland top	
2,935	2,705	Bridge Plug - Permanent, 2,935-2,936	
2,936	2,706		
2,978	2,748		PICTURED CLIFFS, 2,978
2,985	2,754	Hydraulic Fracture, 9/19/1997, Frac'd the Pictured Cliffs with 905 bbls of 25# linear gel/70Q foam and 127,640# 20/40 brady sand. (N2 379,000 scf)	
3,055	2,825	Pictured Cliffs, 2,985-3,055, 9/18/1997	
3,182	2,952	COTD, no record of cement tag	
3,258	3,027	Sand, 3,182-3,309	LEWIS, 3,258
3,275	3,045		
3,276	3,046	Production Casing Cement, 12-3,309, 8/17/1997, Lead 383 sacks 65/35 POZ Class B, Tail 100 sacks 50/50 POZ Class B, circulated 30 bbls to surface.	
3,308		Production, 3 1/2in, 2.992in, 12 ftKB, 3,310 ftKB	
3,309			
3,320		Display Cement Fill, 3,310-3,320, 1/1/2020	
		TD, 3,320, 8/17/1997	

**UNITED STATES DEPARTMENT OF THE INTERIOR
BUREAU OF LAND MANAGEMENT
FARMINGTON DISTRICT OFFICE
1235 LA PLATA HIGHWAY
FARMINGTON, NEW MEXICO 87401**

Attachment to notice of
Intention to Abandon:

Re: Permanent Abandonment
Well: 155 San Juan 29-7 Unit

CONDITIONS OF APPROVAL

1. Plugging operations authorized are subject to the attached "General Requirements for Permanent Abandonment of Wells on Federal and Indian Lease."
2. Farmington Office is to be notified at least 24 hours before the plugging operations commence (505) 599-8907.
3. The following modifications to your plugging program are to be made:
 - a) Place the Kirtland/Ojo Alamo plug from 2225' – 1909'.

You are also required to place cement excesses per 4.2 and 4.4 of the attached General Requirements.

Office Hours: 7:45 a.m. to 4:30 p.m.