

**UNITED STATES
DEPARTMENT OF THE INTERIOR
BUREAU OF LAND MANAGEMENT**

RECEIVED**MAR 01 2011**

Sundry Notices and Reports on Wells

Farmington Field Office
Bureau of Land Management1. Type of Well
GAS2. Name of Operator
BURLINGTON
RESOURCES OIL & GAS COMPANY LP

3. Address & Phone No. of Operator

PO Box 4289, Farmington, NM 87499 (505) 326-9700

4. Location of Well, Footage, Sec., T, R, M

Unit P (SESE), 990' FSL & 990' FEL, Section 18, T28N, R8W, NMPM

5. Lease Number
SF-0792056. If Indian, All. or
Tribe Name

7. Unit Agreement Name

8. Well Name & Number
Sharp 2

9. API Well No.

30-045-13219

10. Field and Pool
Blanco MV / Basin FC11. County and State
San Juan, NM**12. CHECK APPROPRIATE BOX TO INDICATE NATURE OF NOTICE, REPORT, OTHER DATA**

Type of Submission

Type of Action

☒ Notice of Intent☐ Abandonment☐ Change of Plans☐ Other -☐ Subsequent Report☒ Recompletion☐ New Construction☐ Final Abandonment☐ Plugging☐ Non-Routine Fracturing☐ Casing Repair☐ Water Shut off☐ Altering Casing☐ Conversion to Injection**13. Describe Proposed or Completed Operations**

Burlington Resources requests permission to recompleat the Basin Fruitland Coal formation for the subject well per the attached procedure, current wellbore schematic and C102. The DHC will be submitted as soon as possible.

Nmocs Review 19.15.16.10
14. I hereby certify that the foregoing is true and correct.

Signed Crystal Tafoya Crystal Tafoya

Title: Staff Regulatory Technician

Date 3/1/2011

(This space for Federal or State Office use)

APPROVED BY Original Signed: Stephen Mason TitleDate MAR 02 2011

CONDITION OF APPROVAL, if any:

Title 18 U.S.C. Section 1001, makes it a crime for any person knowingly and willfully to make any department or agency of the United States any false, fictitious or fraudulent statements or representations as to any matter within its jurisdiction.

NMOC

Sharp #2

Unit P, Section 18, Township 28N, Range 08W

API#: 3004513219

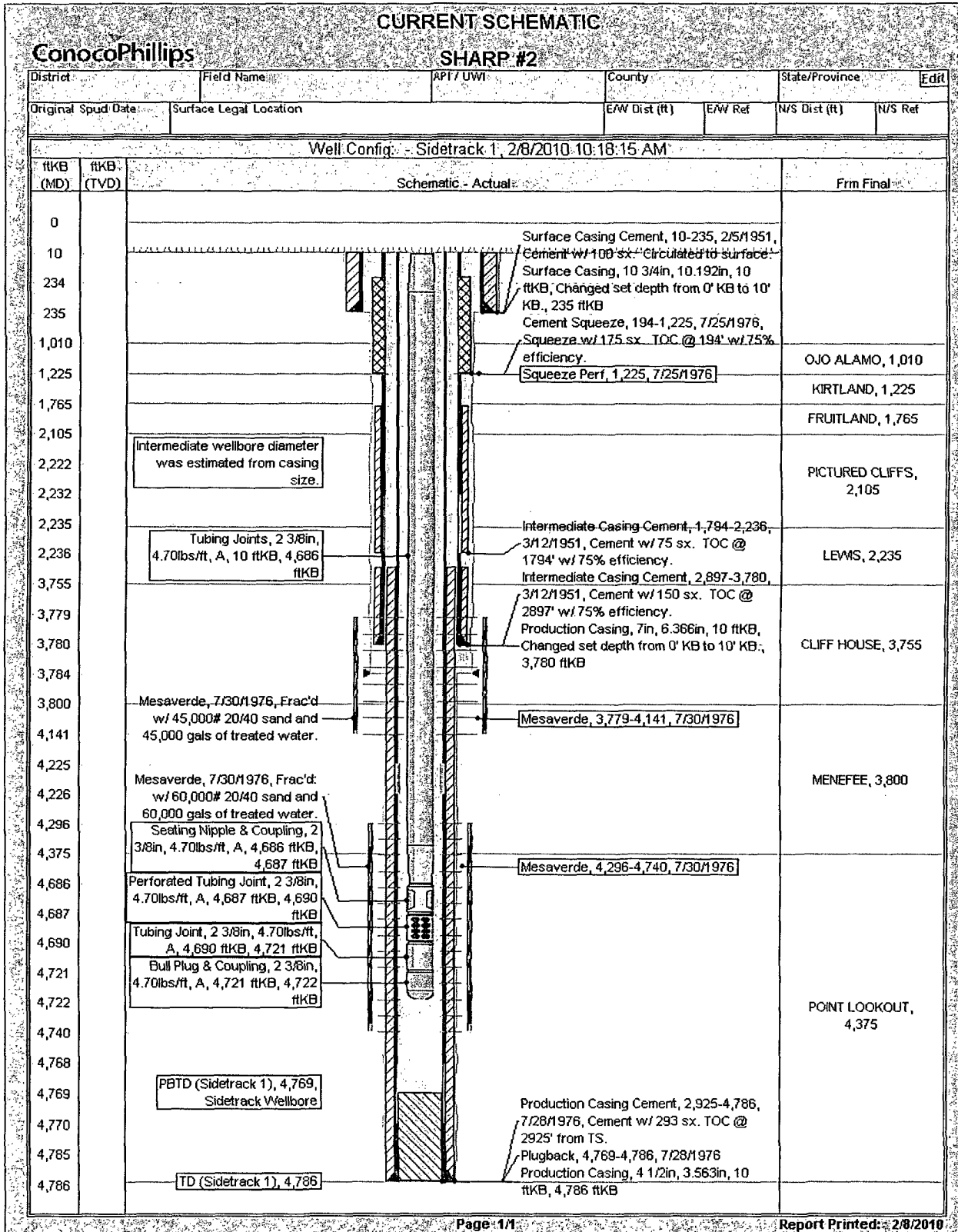
Fruitland Coal Pay-Add Recompletion Sundry

02/08/2010

Procedure:

1. MIRU service rig. TOOH and lay down current production tubing string.
2. Wireline set a 4-1/2" composite bridge plug above the existing Mesaverde formation.
3. Run a GR/CCL/CBL/CNL correlation log with 1000psi. If TOC is not found to be at least ~~100'~~ ^{500'} above top Fruitland Coal perf, perf and squeeze cement to bring into compliance.
4. Wireline set a 4-1/2" composite bridge plug above squeeze holes.
5. Perforate the Fruitland Coal.
6. Fracture stimulate the Fruitland Coal.
7. Flow back frac on clean-up to a steel pit. RIH and wireline set a composite bridge plug 50ft above top perf.
8. TIH with a mill and drill out top 2 composite plugs. Flow test Fruitland Coal.
9. Drill out CBP above MV formation. Clean out to PBTD. TOOH.
10. TIH and land production tubing. Flow test entire wellbore.
11. Release service rig and turn over to production.

Current Wellbore Diagram



District I

1625 N. French Dr., Hobbs, NM 88240
Phone:(505) 393-6161 Fax:(505) 393-0720

District II

1301 W. Grand Ave., Artesia, NM 88210
Phone:(505) 748-1283 Fax:(505) 748-9720

District III

1000 Rio Brazos Rd., Aztec, NM 87410
Phone:(505) 334-6178 Fax:(505) 334-6170

District IV

1220 S. St Francis Dr., Santa Fe, NM 87505
Phone:(505) 476-3470 Fax:(505) 476-3462

State of New Mexico
Energy, Minerals and Natural Resources
Oil Conservation Division
1220 S. St Francis Dr.
Santa Fe, NM 87505

Form C-102
Permit 124871

WELL LOCATION AND ACREAGE DEDICATION PLAT

1. API Number 30-045-13219	2. Pool Code 71629	3. Pool Name BASIN FRUITLAND COAL (GAS)
4. Property Code 7502	5. Property Name SHARP	6. Well No. 002
7. OGRID No. 14538	8. Operator Name BURLINGTON RESOURCES OIL & GAS COMPANY LP	9. Elevation 5729

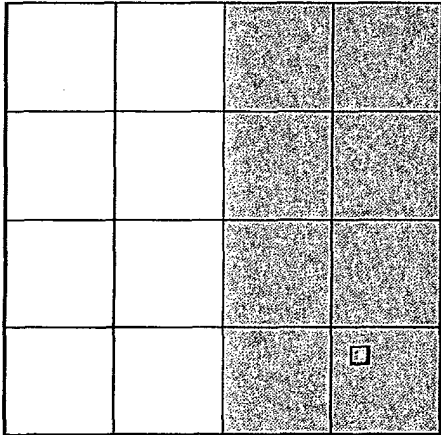
10. Surface Location

UL - Lot	Section	Township	Range	Lot Idn	Feet From	N/S Line	Feet From	E/W Line	County
P	18	28N	08W		990	S	990	E	SAN JUAN

11. Bottom Hole Location If Different From Surface

UL - Lot	Section	Township	Range	Lot Idn	Feet From	N/S Line	Feet From	E/W Line	County
12. Dedicated Acres 320.00 (E/2)		13. Joint or Infill		14. Consolidation Code		15. Order No.			

NO ALLOWABLE WILL BE ASSIGNED TO THIS COMPLETION UNTIL ALL INTERESTS HAVE BEEN CONSOLIDATED OR A NON-STANDARD UNIT HAS BEEN APPROVED BY THE DIVISION

	<p style="text-align: center;">OPERATOR CERTIFICATION</p> <p><i>I hereby certify that the information contained herein is true and complete to the best of my knowledge and belief, and that this organization either owns a working interest or unleased mineral interest in the land including the proposed bottom hole location(s) or has a right to drill this well at this location pursuant to a contract with an owner of such a mineral or working interest, or to a voluntary pooling agreement or a compulsory pooling order heretofore entered by the division.</i></p> <p style="text-align: right;"><i>Crystal Tafuya 12/22/10</i></p> <p>E-Signed By: Crystal Tafuya Title: Staff Regulatory Tech Date: December 22, 2010</p> <hr/> <p style="text-align: center;">SURVEYOR CERTIFICATION</p> <p><i>I hereby certify that the well location shown on this plat was plotted from field notes of actual surveys made by me or under my supervision, and that the same is true and correct to the best of my belief.</i></p> <p>Surveyed By: Schoel Schuleman Date of Survey: 3/17/1954 Certificate Number:</p>
---	--