

DISTRICT I
P.O. Box 1980, Hobbs, NM 88241-1980

State of New Mexico
Energy, Minerals and Natural Resources Department

Form C-101
Revised February 10, 1994
Instructions on back

DISTRICT II
P.O. Drawer DD, Artesia, NM 88211-0719

DISTRICT III
1000 Rio Brazos Rd., Aztec, NM 87410

DISTRICT IV
PO Box 2088, Santa Fe, NM 87504-2088

OIL CONSERVATION DIVISION
PO BOX 2088
Santa Fe, NM 87504-2088

Submit to Appropriate District Office

State Lease - 6 Copies
Fee Lease - 5 Copies

☐ AMENDED REPORT

APPLICATION FOR PERMIT TO DRILL, RE-ENTER, DEEPEN, PLUGBACK, OR ADD A ZONE

Operator Name and Address Patina San Juan, Inc. c/o Walsh Engineering and Production Corp. 7415 E. Main St., Farmington, NM 87402 (505) 327-4892		OGRJD Number 173252
Property Code 24078	Property Name Tafoya	API Number 30-0 45-32187
		Well No. 1C

Surface Location

UL or lot no.	Section	Township	Range	Lot Idn	Feet from the	North/South Line	Feet from the	East/West Line	County
D	35	32N	13W		700'	North	1180'	West	San Juan

Proposed Bottom Hole Location If Different From Surface

UL or lot no.	Section	Township	Range	Lot Idn	Feet from the	North/South Line	Feet from the	East/West Line	County
Proposed Pool 1 Blanco Mesa Verde					Proposed Pool 2 Basin Dakota				

Work Type Code N	Well Type Code G	Cable/Rotary R	Lease Type Code P	Ground Level Elevation 5966'
Multiple Yes	Proposed Depth 7040 +/-	Formation Dakota	Contractor NA	Spud Date April 2004

Proposed Casing and Cement Program

Hole Size	Casing Size	Casing weight/feet	Setting Depth	Sacks of Cement	Estimated TOC
12-1/4"	9-5/8"	36#	250' +/-	140 (165 cu.ft.)	Surface
8-3/4"	7"	20#	4180' +/-	1118 c.ft. + 139 c.ft.	Surface
6-1/4"	4-1/2"	10.5#	7040' +/-	327 c.ft. + 196 c.ft.	4080'

Describe the proposed program. If this application is to DEEPEN or PLUG BACK give the data on the present productive zone and proposed new productive zone. Describe the blowout prevention program, if any. Use additional sheets if necessary.

Patina San Juan proposes to drill a vertical well at the above described location and test the Dakota & Mesa Verde. A 12-1/4" surface hole will be drilled to 250' where 9-5/8", 36# casing will set and cemented to surface with 140 sx (165 cu.ft.) of CI "B" with 1/4#/sk celloflake and 2% CaCl₂. After WOC, a 2000 psi double ram preventer will be installed and pressure tested to 1500 psi. A 8-3/4" hole will be drilled to approximately 4180' with a fresh water polymer mud system. 7", 20# casing will be cemented to surface with 535 sx (1118 cu.ft.) and 100 sx (139 cu.ft.) of Type III cement with additives. A 6-1/4" hole will be drilled to TD with air. 4-1/2" casing will be cemented to 100' above the 7" shoe with 165 sx (327 cu.ft.) and 100 sx (196 cu.ft.) of CI "B" cement with additives. Induction/GR and Density logs will be run at TD. Formation Tops PC - 2240'; CH - 3885'; Men - 4080'; PL - 4635'; GR - 6685'; DK - 6780'. The well will connected to EPFS gathering system.

I hereby certify that the information given above is true and complete to the best of my knowledge and belief.

Signature: *Paul C. Thompson*

Printed name: Paul C. Thompson, P.E.

Title: Agent

Date:
02/23/04

Phone:
(505) 327-4892

OIL CONSERVATION DIVISION

Approved by:

Title: *Deputy Oil & Gas Inspector, Dist. 8*

Approval Date: FEB 24 2004 Expiration Date: FEB 24 2005

Conditions of Approval

Attached ☐

District I
PO Box 1980, Hobbs, NM 88241-1980

State of New Mexico
Energy, Minerals & Natural Resources Department

Form C-102
Revised February 21, 1994

District II
PO Drawer DD, Artesia, NM 88211-0719

District III
1000 Rio Brazos Rd., Aztec, NM 87410

District IV
PO Box 2088, Santa Fe, NM 87504-2088

OIL CONSERVATION DIVISION
PO Box 2088
Santa Fe, NM 87504-2088

Submit to Appropriate District Office
State Lease - 4 Copies
Fee Lease - 3 Copies

☐ AMENDED REPORT

WELL LOCATION AND ACREAGE DEDICATION PLAT

*API Number 30-045-3287		*Pool Code 72319 / 71599	*Pool Name BLANCO MESAVERDE / BASIN DAKOTA
*Property Code 24078	*Property Name TAFOYA		*Well Number 1C
*OGRID No. 173252	*Operator Name PATINA SAN JUAN, INC.		*Elevation 5966'

¹⁰ Surface Location

UL or lot no.	Section	Township	Range	Lot Idn	Feet from the	North/South line	Feet from the	East/West line	County
D	35	32N	13W		700	NORTH	1180	WEST	SAN JUAN

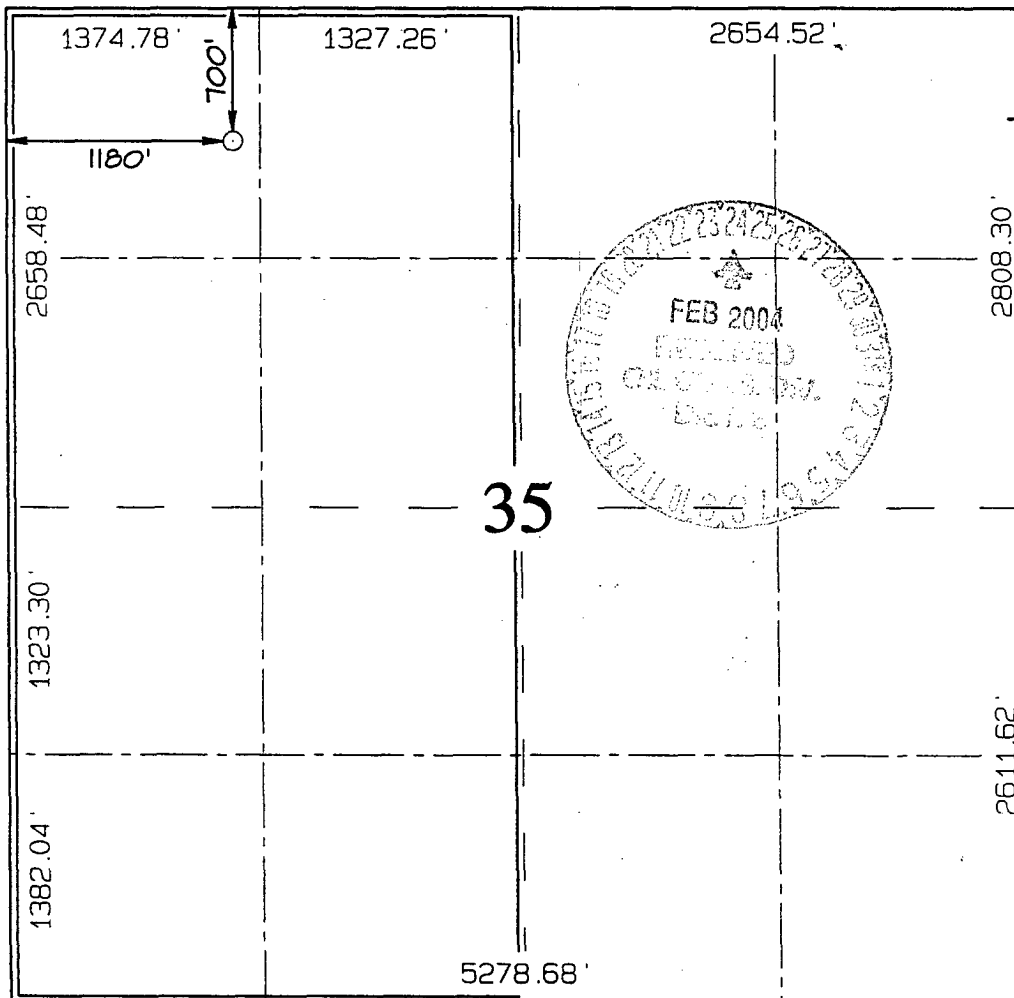
¹¹ Bottom Hole Location If Different From Surface

UL or lot no.	Section	Township	Range	Lot Idn	Feet from the	North/South line	Feet from the	East/West line	County

¹² Dedicated Acres 320.0 Acres - (W/2)	¹³ Joint or Infill Y	¹⁴ Consolidation Code	¹⁵ Order No.
--	------------------------------------	----------------------------------	-------------------------

NO ALLOWABLE WILL BE ASSIGNED TO THIS COMPLETION UNTIL ALL INTERESTS HAVE BEEN CONSOLIDATED
OR A NON-STANDARD UNIT HAS BEEN APPROVED BY THE DIVISION

16



¹⁷ OPERATOR CERTIFICATION

I hereby certify that the information contained herein is true and complete to the best of my knowledge and belief

Paul C. Thompson
Signature

Paul C. Thompson
Printed Name

Agent
Title

2/23/04
Date

¹⁸ SURVEYOR CERTIFICATION

I hereby certify that the well location shown on this plat was plotted from field notes of actual surveys made by me or under my supervision, and that the same is true and correct to the best of my belief.

Survey Date: NOVEMBER 26, 2003

Signature and Seal of Professional Surveyor



Jason C. Edwards
Certificate Number 15269