

UNITED STATES
DEPARTMENT OF INTERIOR
BUREAU OF LAND MANAGEMENT

FORM APPROVED
Budget Bureau No. 1004-0135
Expires: March 31, 1993

SUNDRY NOTICE AND REPORTS ON WELLS

Do not use this form for proposals to drill or to deepen or reentry to a different reservoir. Use "APPLICATION TO DRILL" for permit for such proposals

RECEIVED

204 MAR 27 PM 2:00

070 Farmington, NM

SUBMIT IN TRIPLICATE

1. Type of Well
Oil Well ☐ Gas Well ☒ Other ☐

2. Name of Operator
WILLIAMS PRODUCTION COMPANY

3. Address and Telephone No.
PO BOX 316 Ignacio, Colorado 81137 (970)563-3308

4. Location of Well (Footage, Sec., T., R., M., or Survey Description)
Sur - 1895fsl&1885fwl / BHL - 660fsl&1980fwl, T31N, R6W, sec 17

5. Lease Designation and Serial No.
SF-078766

6. If Indian, Allottee or Tribe Name

7. If Unit or CA, Agreement Designation
Rosa Unit

8. Well Name and No.
Rosa Unit #139B

9. API Well No.
30-045-31137

10. Field and Pool, or Exploratory Area
Blanco Mesa Verde/Basin Dakota

11. County or Parish, State
San Juan, New Mexico

CHECK APPROPRIATE BOX(S) TO INDICATE NATURE OF NOTICE, REPORT, OR OTHER DATA

TYPE OF SUBMISSION

☒ Notice of Intent

☒ Subsequent Report

Final Abandonment

TYPE OF ACTION

Abandonment

Recompletion

Plugging Back

Casing Repair

Altering Casing

☒ Other see below

Change of Plans

New Construction

Non-Routine Fracturing

Water Shut-Off

Conversion to Injection

Dispose Water

(Note: Report results of multiple completion on Well Completion or Recompletion Report and Log form.)

13. Describe Proposed or Completed Operations (Clearly state all pertinent details, and give pertinent dates, including estimated date of starting any proposed work. If well is directionally drilled, give subsurface locations and measured and true vertical depths for all markers and zones pertinent to this work.)*

Williams Production Company, LLC intends to directionally drill this well from the above surface location to a BHL of 660 FSL and 1980 FWL to a TD of 8404'. Per the attached C-102, operation and directional plan. This well was originally permitted as mesaverde only with a BHL 660 FSL and 2400 FWL, sec 17, T31N, R6W.



HOLD C104 FOR Directional Survey

14. I hereby certify that the foregoing is true and correct

Signed Larry Higgins
Larry Higgins

Title Drilling C.O.M.

Date 2-27-04

(This space for Federal or State office use)

Approved by Jim Lovel

Title Petr. Eng.

Date 3/4/04

Conditions of approval, if any

Title 18 U.S.C. Section 1001, makes it a crime for any person knowingly and willfully to make to any department or agency of the United States any false, fictitious or fraudulent statements or representations as to any matter within its jurisdiction.

NMOCD

District I
PO Box 1980, Hobbs, NM 88241-1980

District II
PO Drawer DD, Artesia, NM 88211-0719

District III
1000 Rio Brazos Rd., Aztec, NM 87410

District IV
PO Box 2088, Santa Fe, NM 87504-2088

State of New Mexico
Energy, Minerals & Natural Resources Department

OIL CONSERVATION DIVISION
PO Box 2088
Santa Fe, NM 87504-2088

Form C-102
Revised February 21, 1994
Instructions on back
Submit to Appropriate District Office
State Lease - 4 Copies
Fee Lease - 3 Copies

704 FEB 27 PM 2:00

☐ AMENDED REPORT

070 Farmington, NM

WELL LOCATION AND ACREAGE DEDICATION PLAT

*API Number	*Pool Code 72319 / 71599	*Pool Name BLANCO MESAVERDE / BASIN DAKOTA
*Property Code 17033	*Property Name ROSA UNIT	*Well Number 139B
*OGRID No. 120782	*Operator Name WILLIAMS PRODUCTION COMPANY	*Elevation 6404'

¹⁰ Surface Location

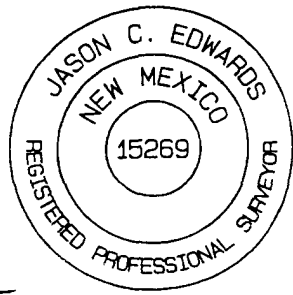
UL or lot no.	Section	Township	Range	Lot Idn	Feet from the	North/South line	Feet from the	East/West line	County
K	17	31N	6W		1895	SOUTH	1885	WEST	SAN JUAN

¹¹ Bottom Hole Location If Different From Surface

UL or lot no.	Section	Township	Range	Lot Idn	Feet from the	North/South line	Feet from the	East/West line	County
N	17	31N	6W		660	SOUTH	1980	WEST	SAN JUAN

¹² Dedicated Acres 320.0 Acres - (W/2)	¹³ Joint or Infill	¹⁴ Consolidation Code	¹⁵ Order No.
--	-------------------------------	----------------------------------	-------------------------

NO ALLOWABLE WILL BE ASSIGNED TO THIS COMPLETION UNTIL ALL INTERESTS HAVE BEEN CONSOLIDATED OR A NON-STANDARD UNIT HAS BEEN APPROVED BY THE DIVISION

<div><p>¹⁶</p><p>5276.04'</p><p>SF-078766</p><p>5280.00'</p><p>1885'</p><p>1980'</p><p>5281.32'</p><p>17</p><p>SURFACE LOCATION</p><p>BOTTOM HOLE</p><p>1237.3'</p><p>504.48.7'E</p><p>1895'</p><p>.099</p></div>	<div><p>¹⁷ OPERATOR CERTIFICATION</p><p>I hereby certify that the information contained herein is true and complete to the best of my knowledge and belief</p><p><i>Larry Higgins</i> Signature</p><p>LARRY HIGGINS Printed Name</p><p>DRILLING COM Title</p><p>2-27-04 Date</p></div> <div><p>¹⁸ SURVEYOR CERTIFICATION</p><p>I hereby certify that the well location shown on this plat was plotted from field notes of actual surveys made by me or under my supervision, and that the same is true and correct to the best of my belief.</p><p>Revised: FEBRUARY 9, 2004 Date of Survey: MAY 22, 2002 Signature and Seal of Professional Surveyor</p><p></p><p>JASON C. EDWARDS Certificate Number 15269</p></div>
--	---



WILLIAMS PRODUCTION COMPANY

Operations Plan

(Note: This procedure will be adjusted on site based upon actual conditions)

<u>DATE:</u>	2/19/2004	<u>FIELD:</u>	BasinDK/BlancoMV
<u>WELL NAME:</u>	Rosa #139B	<u>SURFACE:</u>	Fed
<u>BH LOCATION:</u>	SESW Sec 17-31N-6W San Juan, NM	<u>MINERALS:</u>	Fed
<u>SURF. LOCATION:</u>	NESW Sec 17-31N-6W		
<u>ELEVATION:</u>	6,404' GR	<u>LEASE #</u>	SF-078766
<u>MEASURED DEPTH:</u>	8,404'		

I. GEOLOGY: Surface formation - San Jose

A. FORMATION TOPS: (KB)

Name	TVD	MD	Name	TVD	MD
Ojo Alamo	2,353	2,553	Cliff House	5,373	5,634
Kirtland	2,478	2,691	Menefee	5,423	5,684
Fruitland	3,013	3,261	Point Lookout	5,683	5,944
Picture Cliffs	3,238	3,493	Mancos	5,983	6,244
Lewis	3,528	3,787	Gallup	6,978	7,239
			Greenhorn	7,703	7,964
			Graneros	7,763	8,024
			Dakota	7,893	8,154
			TD	8,143	8,404

B. MUD LOGGING PROGRAM: None

C. LOGGING PROGRAM: Cased hole logs

D. NATURAL GAUGES: Gauge any noticeable increases in gas flow. Record all gauges in Tour book and on morning reports.

II. DRILLING

- A. **MUD PROGRAM:** Clear water with benex to 7" casing point. Convert to a LSND mud to log and run pipe. Treat for lost circulation as necessary. Obtain 100% returns prior to cementing. Notify Engineering of any mud losses. Use air w/Air Hammer from 7 in. csg.to TD.
- B. **BOP TESTING:** While drill pipe is in use, the pipe rams and the blind rams will be function tested once each trip. The anticipated reservoir is expected to be less than 1300 psi, so the rams will be tested to 1500 psi. The surface and intermediate casing strings will be pressure tested to 1500 psi in conjunction with the BOP test before drilling out cement. The drum brakes will be inspected and tested each tour. All tests, inspections and SPR's will be recorded in the tour book as to time and results.

III. MATERIALS

A. **CASING PROGRAM:**

<u>CASING TYPE</u>	<u>HOLE SIZE</u>	<u>DEPTH (MD)</u>	<u>CASING SIZE</u>	<u>WT. & GRADE</u>
Surface	14-3/4"	+/- 300'	10-3/4"	32.75# H-40
Intermediate	9-7/8"	+/-3974'	7-5/8"	26.4# K-55
Prod. Casing	6-3/4"	+/- 8404'	5-1/2"	17.0# N-80

B. **FLOAT EQUIPMENT:**

1. **SURFACE CASING:** 9-5/8" notched regular pattern guide shoe. Run (1) standard centralizer on each of the bottom (3) joints of Surface Casing.
2. **INTERMEDIATE CASING:** 7" cement nose guide shoe with a self-fill insert float. Place float collar one joint above the shoe. Install one Turbulent centralizer on each of the bottom (3) joints and one standard centralizer every (4) joints to the surface casing. Total centralizers = (26) regular and (3) turbulent.
3. **PRODUCTION CASING:** 4-1/2" whirler type cement nose guide shoe with a latch collar on top of 20" bottom joint. Place marker joint above 5630'. Place one positive standoff turbolizer every other joint. Total turbolizers is 34.

C. CEMENTING:

(Note: Volumes may be adjusted onsite due to actual conditions)

1. SURFACE: Slurry: 255sx (356 cu.ft.) of "Type III" + 2% CaCl₂ + 1/4 # of cello-flake/sk (Yield = 1.39 cu.ft./sk, Weight = 14.5 #/gal.). The 100% excess should circulate cement to the surface. WOC 12 hours. Test csg to 1500psi.
2. INTERMEDIATE: Lead - 625 sx (1302) cu.ft.) of "Type III" 65/35 poz with 8% gel, 1% CaCl₂ and 1/4# cello-flake/sk (Yield = 2.09 cu.ft./sk, Weight = 12.1 #/gal.). Tail - 150 sx (209cu.ft.) of "Type III" with 1/4# cello-flake/sk, and 1% CaCl₂ (Yield = 1.4 cu.ft./sk, Weight = 14.5#/gal.). Use **100% excess in Lead Slurry** to circulate to surface. **No excess in Tail Slurry**. Total volume = 1,511 cu.ft. Bump Plug to 1,500 psi. Notify engineering if cement is not circulated to surface.
3. PRODUCTION LINER: 10 bbl Gelled Water space. Scavenger: 50sx (130ft³) of Premium Light HS + 1% FL-52 + .2% CD-32, 0.1% R-3, 3 #/sk CSE, 1/4 #/sk cello flake and 4% Phenoseal. (Yield = 2.59 cu.ft./sk, Weight = 11.6 #/gal.). Cement: 215 sx (~~430~~ ⁴⁶² ft³) of Premium Light HS + 1% FL-52 + .2% CD-32, 0.1% R-3, 3 #/sk CSE, 1/4 #/sk cello flake and 4% Phenoseal. (Yield = 2.15 ft³/sk, Weight = 12.3 #/gal.). Displace cement at a minimum of 8 BPM. The 20% excess in lead and tail should cover 100 ft into intermediate casing. Total volume ~~460~~ ⁵⁹² ft³. WOC 12 hours

IV COMPLETION

A. CBL

1. Run Cement Bond Log across all intervals to be perforated and find Top of Cement behind all casing strings if cement not circulated to surface..

B. PRESSURE TEST

1. Pressure test 7 5/8" & 5-1/2" casing to 3300# for 15 minutes.

C. STIMULATION

1. Stimulate Dakota with approximately 70,000# of 20/40 sand in x-link foam.
2. Isolate Dakota with a RBP.
3. Stimulate Point Lookout with approximately 80,000# of 20/40 sand in slick water.
4. Isolate Point Lookout with a RBP.
5. Perforate the Menefee/Cliff House as determined from the open hole logs.
6. Stimulate with approximately 80,000# of 20/40 sand in slick water.
7. Test each zone before removing bridge plugs.

D. RUNNING TUBING

1. Dakota: Run 2-1/16", 3.25#, J-55, IJ tubing with 1/2 mule shoe on bottom, SN with pump-out plug on top of adeem joint and 5 Seal Units. Land tubing approximately 100' below top Dakota perf.
2. Mesa Verde: Run 2-1/16", 2.9#, J-55, EUE tubing with a SN (1.91" ID) on top of bottom joint. Land tubing approximately 25' above the bottom Point Lookout perforations.

Gary Sizemore
Gary Sizemore
Sr. Drilling Engineer

HALLIBURTON

Williams Production Company

DrillQuest™

Sperry-Sun

New Mexico
San Juan County
Sec. 17-T31N-R06W
Rosa Unit # 139B
Plan 02/17/04



Eastings

Scale: 1 inch = 200ft

-200 0 200

Kick-Off at 400.00ft

Build Rate = 3.00°/100ft

End of Build at 1420.64ft

Hold Angle at 30.619°

Start Drop/Turn at 2266.21ft

Drop/Turn Rate = 1.50°/100ft

Drop to Vertical at 3974.15ft

Drop Rate = 1.00°/100ft

End of Drop at 4474.15ft

Hold Angle at 0.000°

Total Depth at 8404.78ft

7 5/8"

3974.15

Rosa Unit # 139B Target

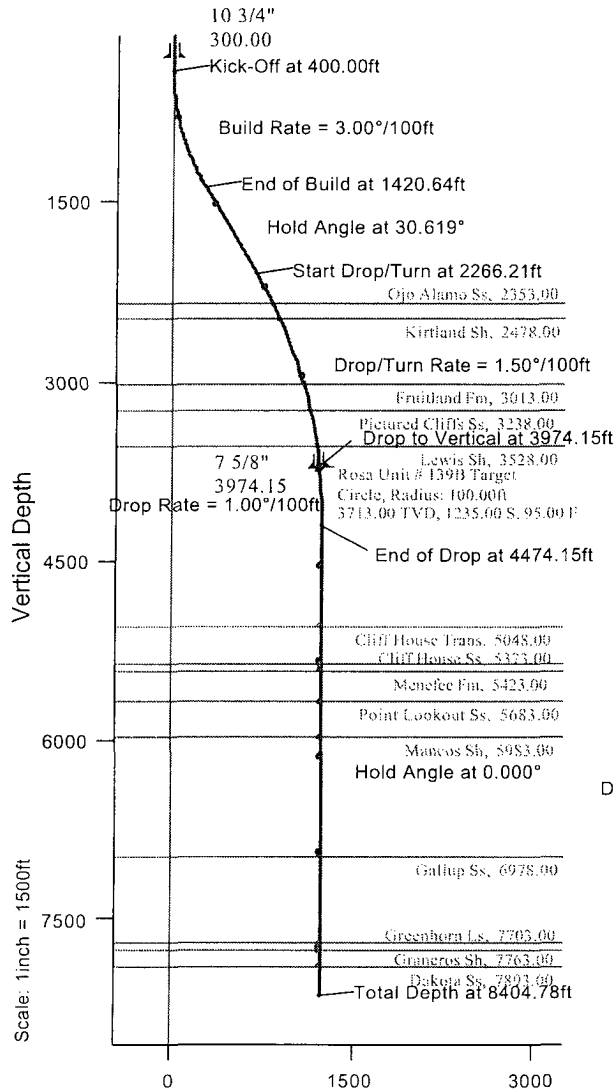
Circle, Radius: 100.00ft

3713.00 TVD

1235.00 S, 95.00 E

Northings

Scale: 1 inch = 200ft



Section Azimuth: 175.601° (True North)

Vertical Section

Prepared by:
AdminDate/Time:
17 February, 2004 - 15:55

Checked:

Approved: