

NUMBER OF COPIES RECEIVED	
DISTRIBUTION	
SANTA FE	
FILE	
U.S.S.	
LAND OFFICE	
TRANSPORTER	OIL GAS
PRODUCTION OFFICE	
OPERATOR	

NEW MEXICO OIL CONSERVATION COMMISSION
Santa Fe, New Mexico

Form C-101
Revised (12/1/55)

NOTICE OF INTENTION TO DRILL

Notice must be given to the District Office of the Oil Conservation Commission and approval obtained before drilling or recompletion begins. If changes in the proposed plan are considered advisable, a copy of this notice showing such changes will be returned to the sender. Submit this notice in **QUINTUPPLICATE**. One copy will be returned following approval. See additional instructions in Rules and Regulations of the Commission. If State Land submit 6 Copies Attach Form C-128 in triplicate to first 3 copies of form C-101

SANTA FE, NEW MEXICO

5/31/62

(Place)

(Date)

OIL CONSERVATION COMMISSION
SANTA FE, NEW MEXICO

Gentlemen:

You are hereby notified that it is our intention to commence the Drilling of a well to be known as

SCANLON - ~~NOHRN~~ NO. 1 *Shepard*

(Company or Operator)

(Lease), Well No. 1, in (Unit) The well is

located 165 feet from the NORTH line and 2475 feet from the

~~WEST~~ EAST

line of Section 28

T 20N

R 9W

NMPM.

(GIVE LOCATION FROM SECTION LINE) CHACO WASH-MESA VERDE Pool, MCKINLEY County

If State Land the Oil and Gas Lease is No. K-1883

If patented land the owner is

Address

We propose to drill well with drilling equipment as follows:

TRUCK MOUNTED ROTARY RIG

The status of plugging bond is CURRENT

Drilling Contractor O. L. RAY, GRANTS, NM

We intend to complete this well in the MESA VERDE

formation at an approximate depth of 550 feet.

CASING PROGRAM

We propose to use the following strings of Casing and to cement them as indicated:

Size of Hole	Size of Casing	Weight per Foot	New or Second Hand	Depth	Sacks Cement
4-3/4"	2"	EUE	New	550	16-20

If changes in the above plans become advisable we will notify you immediately.

ADDITIONAL INFORMATION (If recompletion give full details of proposed plan of work.)

Approved
Except as follows:

8-24, 1962

Sincerely yours,

SCANLON- NOHRN - ~~RECEIVED~~

(Company or Operator)

By

W. L. Nohrn

Position

PARTNER

Send Communications regarding well to

Name W. L. NOHRN

Address P.O. BOX 4456, SANTA FE, NM

By *Emery C. Ames*

OIL CONSERVATION COMMISSION

NUMBER OF COPIES RECEIVED	
DISTRIBUTION	
SANTA FE	
FILE	
U.S.S.	
LAND OFFICE	
TRANSPORTER	OIL GAS
PRODUCTION OFFICE	
OPERATOR	

NEW MEXICO OIL CONSERVATION COMMISSION
WELL LOCATION AND ACREAGE DEDICATION PLAT
 SEE INSTRUCTIONS FOR COMPLETING THIS FORM ON THE REVERSE SIDE

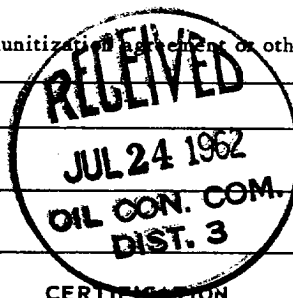
FORM C-128
 Revised 5/1/57

SECTION A

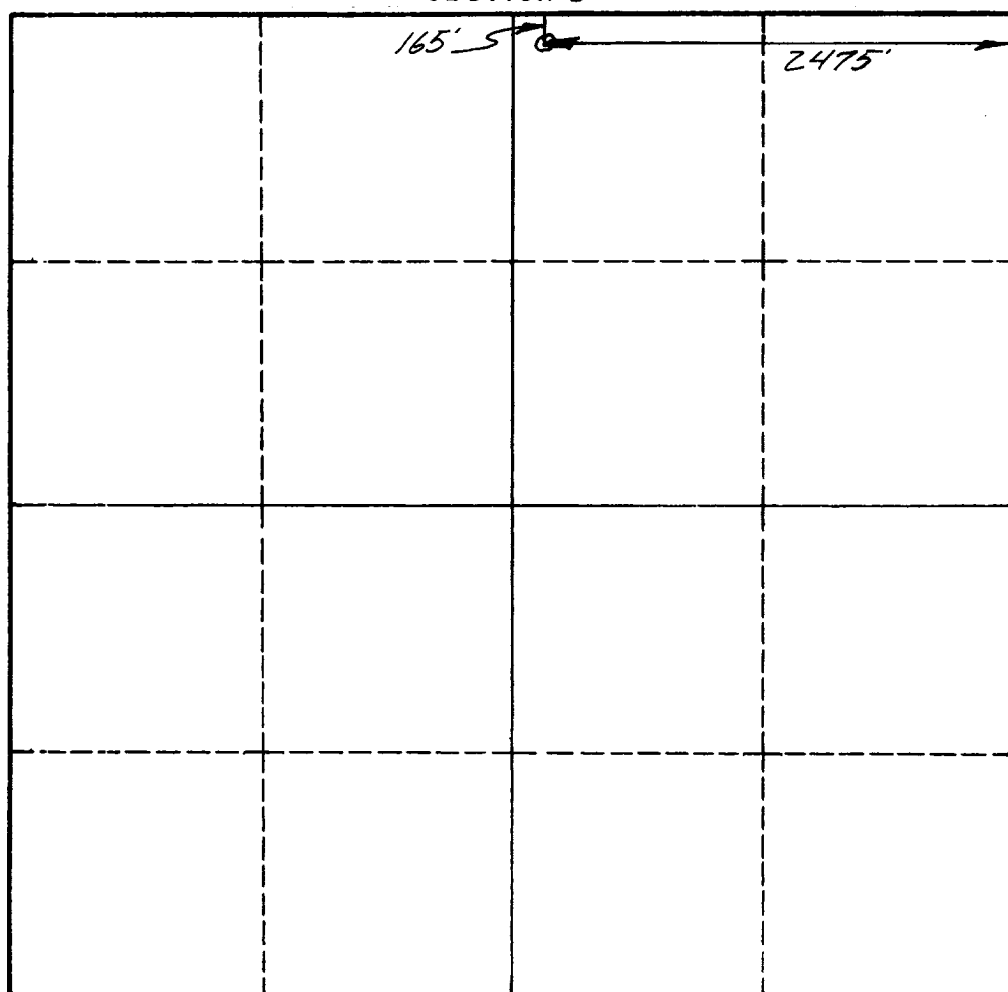
Operator SCANLON-SHEPARD		Lease K-1883		STATE K		Well No. CNE
Unit Letter	Section 22	Township 20 N	Range 9W	County MCKINLEY		
Actual Footage Location of Well: 165 feet from the NORTH line and 2475 feet from the EAST line						
Ground Level Elev.	Producing Formation MESA VERDE		Pool CHACO WASHT MESA VERDE		Dedicated Acreage: 40 Acres	

1. Is the Operator the only owner in the dedicated acreage outlined on the plat below? YES ☒ NO ____ . ("Owner" means the person who has the right to drill into and to produce from any pool and to appropriate the production either for himself or for himself and another. (65-3-29 (e) NMSA 1935 Comp.)
2. If the answer to question one is "no," have the interests of all the owners been consolidated by communitization agreement or otherwise? YES ____ NO ____ . If answer is "yes," Type of Consolidation ____
3. If the answer to question two is "no," list all the owners and their respective interests below:

Owner	Land Description



SECTION B



CERTIFICATION

I hereby certify that the information in SECTION A above is true and complete to the best of my knowledge and belief.

W. L. NOHRN

Name	W. L. Nohrn
Position	PARTNER
Company	SCANLON-NOHRN
Date	5/31/62

I hereby certify that the well location shown on the plat in SECTION B was plotted from field notes of actual surveys made by me or under my supervision, and that the same is true and correct to the best of my knowledge and belief.

Date Surveyed	5/13/62
Registered Professional Engineer and/or Land Surveyor	T. E. SCANLON
Certificate No.	284

0 330 660 990 1320 1650 1980 2310 2640 2000 1500 1000 500 0