

Cards & Label

NEW MEXICO OIL CONSERVATION COMMISSION

Form C-101  
Revised 1-1-65

NO. OF COPIES RECEIVED	5
DISTRIBUTION	
SANTA FE	1
FILE	1
U.S.G.S.	2
LAND OFFICE	
OPERATOR	1

5A. Indicate Type of Lease
STATE <input type="checkbox"/> FEE <input checked="" type="checkbox"/>
5. State Oil & Gas Lease No.

APPLICATION FOR PERMIT TO DRILL, DEEPEN, OR PLUG BACK

1a. Type of Work			7. Unit Agreement Name		
b. Type of Well DRILL <input checked="" type="checkbox"/> DEEPEN <input type="checkbox"/> PLUG BACK <input type="checkbox"/> OIL WELL <input checked="" type="checkbox"/> GAS WELL <input type="checkbox"/> OTHER Wildcat SINGLE ZONE <input checked="" type="checkbox"/> MULTIPLE ZONE <input type="checkbox"/>			8. Farm or Lease Name Santa Fe RR "A"		
2. Name of Operator Tenneco Oil Company			9. Well No. 1		
3. Address of Operator P. O. Box 1714, Durango, Colorado			10. Field and Pool, or Wildcat Wildcat		
4. Location of Well UNIT LETTER B LOCATED 660 FEET FROM THE North LINE AND 1980 FEET FROM THE East LINE OF SEC. 32 TWP. 17 N. RGE. 9 W. NMPM			12. County McKinley		
19. Proposed Depth 1500			19A. Formation Hospah		20. Rotary or C.T. Rotary
21. Elevations (Show whether DF, RT, etc.) 6984' Gr.		21A. Kind & Status Plug. Bond	21B. Drilling Contractor		22. Approx. Date Work will start Sept. 3, 1966

23.

PROPOSED CASING AND CEMENT PROGRAM

SIZE OF HOLE	SIZE OF CASING	WEIGHT PER FOOT	SETTING DEPTH	SACKS OF CEMENT	EST. TOP.
12 1/4"	8 5/8"	20 & 24#	90	Cement to surface	
7 7/8"	4 1/2"	10.5#	1500	Cement to surface	

We propose to drill to approximate TD of 1500'. Run DST. Run IES and Density logs. Run casing as shown above. WOC. Complete as a single oil well if productive. Run potential test. Run 2 3/8" tubing, install pumping unit and engine, production equipment and rods.

APPROVAL VALID  
FOR 90 DAYS UNLESS  
DRILLING COMMENCED.  
EXPIRES 11-30-66



IN ABOVE SPACE DESCRIBE PROPOSED PROGRAM; IF PROPOSAL IS TO DEEPEN OR PLUG BACK, GIVE DATA ON PRESENT PRODUCTIVE ZONE AND PROPOSED NEW PRODUCTIVE ZONE. GIVE BLOWOUT PREVENTER PROGRAM, IF ANY.

I hereby certify that the information above is true and complete to the best of my knowledge and belief.

Signed Harold C. Nichols Title Senior Production Clerk Date August 30, 1966

(This space for State Use)

Original Signed by Emery C. Arnold

SUPERVISOR DIST. #3

SEP 1 1966

APPROVED BY

TITLE

DATE

CONDITIONS OF APPROVAL, IF ANY:

DISTRIBUTION:

5-NMOCC

1-File

# NEW MEXICO OIL CONSERVATION COMMISSION WELL LOCATION AND ACERAGE DEDICATION PLAT

All distances must be from the outer boundaries of the Section

Operator <b>TENNECO OIL COMPANY</b>		Lease <b>SANTA FE RAILROAD "A"</b>		Well No <b>1</b>
Unit Letter <b>B</b>	Section <b>32</b>	Township <b>17 North</b>	Range <b>9 West</b>	County <b>McKinley</b>
Actual Footage Location of Well: <b>660</b> feet from the <b>North</b> line <b>1980</b> feet from the <b>East</b> line				
Ground Level Elev. <b>6984' ungraded</b>		Producing Formation <b>Hospah</b>		Dedicated Acreage: <b>40</b> Acres

- Outline the acreage dedicated to the subject well by colored pencil or hatchure marks on the plat below.
- If more than one lease is dedicated to the well, outline each and identify the ownership thereof (both as to working interest and royalty).
- If more than one lease of different ownership is dedicated to the well, have the interests of all owners been consolidated by communization, unitization, force-pooling, etc?  
☐ Yes ☐ No If answer is "yes," type of consolidation \_\_\_\_\_

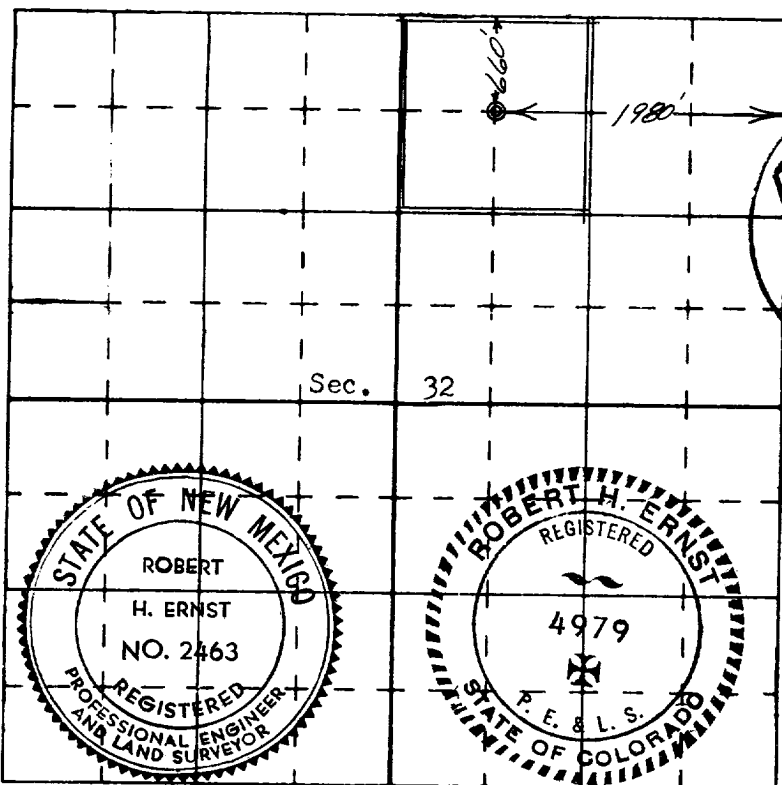
If answer is "no," list the owners and tract descriptions which have actually consolidated. (Use reverse side of this form if necessary.) \_\_\_\_\_

No allowable will be assigned to the well until all interests have been consolidated (by communization, unitization, forced-pooling, or otherwise) or until a non standard unit, eliminating such interests, has been approved by the Commission.

## CERTIFICATION

I hereby certify that the information contained herein is true and complete to the best of my knowledge and belief.

*Harold C. Nichols*  
 Name Harold C. Nichols  
 Position Senior Production Clerk  
 Company Tenneco Oil Company  
 Date August 30, 1966



N

I hereby certify that the well location shown on this plat was plotted from field notes of actual surveys made by me or under my supervision, and that the same is true and correct to the best of my knowledge and belief.

24 August 1966  
 Date Surveyed  
*Robert H. Ernst*  
 Registered Professional Engineer  
 and/or Land Surveyor  
**Robert H. Ernst**  
**N. Mex. PE & LS 2463**  
 Certificate No. \_\_\_\_\_

ERNST ENGINEERING CO.  
DURANGO, COLORADO