

**TENNECO OIL COMPANY** *A Tenneco Company*

SUITE 1200 • LINCOLN TOWER BUILDING • DENVER, COLORADO 80203



May 23, 1972

Mr. A. L. Porter  
Secretary - Director  
New Mexico Oil Conservation Commission  
P. O. Box 2088  
Santa Fe, New Mexico

RE: Exception to Rule 104  
Gas Well Spacing: Santa Fe  
and Pacific Railroad Well No. 8  
Section 24, Township 17 North,  
Range 9 West,  
Undesignated Dakota Field  
McKinley County, New Mexico

Dear Sir:

Tenneco Oil Company, as operator of the captioned well, respectfully submits application for an exception to the well spacing Rule 104. A copy of the location plat for the captioned well is attached. It shows the well to be located 640 feet (instead of 660') from the west side of Section 24, Township 17 North, Range 9 West. The well is now completed in the Dakota "A" Gas Reservoir.

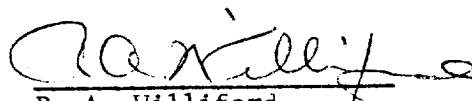
The basis on which Tenneco is making this request is the fact that this well was initially drilled with the Lone Pine Dakota "D" Pool (oil) as its objective. The "D" Zone was unproductive and the well recompleted to the "A" Zone. The current completion meets oil well spacing requirements.

Tenneco Oil Company controls all of the acreage in the immediate area.

Your approval of the application will be appreciated.

Yours very truly,

TENNECO OIL COMPANY

  
R. A. Williford  
District Production Manager

WEB/lj  
Attachments

cc: Emery Arnold  
NMOCC  
Aztec, New Mexico



**NEW MEXICO OIL CONSERVATION COMMISSION  
WELL LOCATION AND ACERAGE DEDICATION PLAT**

All distances must be from the outer boundaries of the Section

Operator <b>TENNECO OIL COMPANY</b>			Lease <b>SANTA FE PACIFIC RAILROAD</b>			Well No. <b>8</b>		
Unit Letter <b>D</b>	Section <b>24</b>	Township <b>17 North</b>	Range <b>9 West</b>	County <b>McKinley</b>				
Actual Footage Location of Well:								
<b>740</b>		feet from the	<b>North</b>	line and	<b>640</b>	feet from the	<b>West</b>	line
Ground Level Elev. <b>7096' ungraded</b>		Producing Formation		Pool		Dedicated Acreage:  Acres		

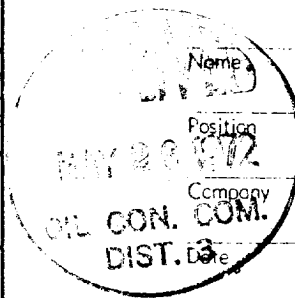
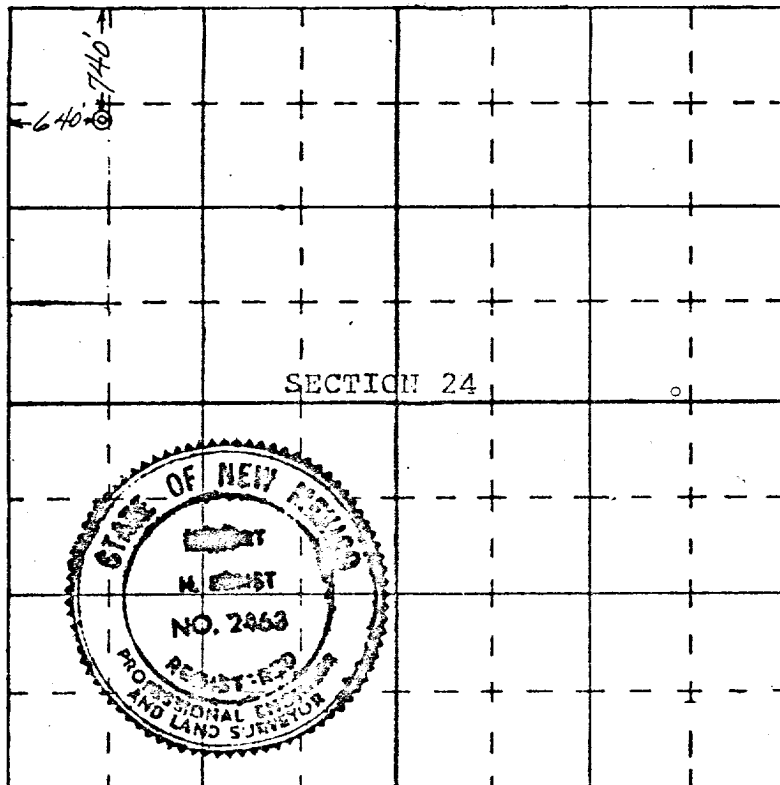
1. Outline the acreage dedicated to the subject well by colored pencil or hachure marks on the plat below.
2. If more than one lease is dedicated to the well, outline each and identify the ownership thereof (both as to working interest and royalty),
3. If more than one lease of different ownership is dedicated to the well, have the interests of all owners been consolidated by communitization, unitization, force-pooling, etc?  
 Yes    No     If answer is "yes," type of consolidation .....

If answer is "no," list the owners and tract descriptions which have actually consolidated. (Use reverse side of this Form if necessary.) .....

No allowable will be assigned to the well until all interests have been consolidated (by communitization, unitization, forced-pooling, or otherwise) or until a non standard unit, eliminating such interests, has been approved by the Commission.

**CERTIFICATION**

I hereby certify that the information contained herein is true and complete to the best of my knowledge and belief.



I hereby certify that the well location shown on this plat was plotted from field notes of actual surveys made by me or under my supervision, and that the same is true and correct to the best of my knowledge and belief.

18 November 1970  
Date Surveyed

*Robert H. Ernst*  
Registered Professional Engineer  
and/or Land Surveyor

**Robert H. Ernst**

New Mexico PE&LS 2463  
Certificate No.

**ERNST ENGINEERING CO.  
DURANGO, COLORADO**