

NO. OF COPIES RECEIVED	5
DISTRIBUTION	
SANTA FE	1
FILE	1 ✓
U.S.G.S.	2
LAND OFFICE	
OPERATOR	1

# NEW MEXICO OIL CONSERVATION COMMISSION

Form C-101  
Revised 1-1-65 30-031-20338

5A. Indicate Type of Lease	
STATE <input type="checkbox"/>	FEE <input checked="" type="checkbox"/>

5. State Oil & Gas Lease No.

-

-

-

-

-

-

-

-

-

-

-

-

-

-

-

-

-

-

-

-

-

-

-

-

-

-

-

-

-

-

-

-

-

-

-

-

-

-

-

-

-

-

-

-

-

-

-

-

-

-

-

-

-

-

-

-

-

-

-

-

-

-

-

-

-

-

-

-

-

-

-

-

-

-

-

-

-

## APPLICATION FOR PERMIT TO DRILL, DEEPEN, OR PLUG BACK

1a. Type of Work		DRILL <input checked="" type="checkbox"/>		DEEPEN <input type="checkbox"/>		PLUG BACK <input type="checkbox"/>	
b. Type of Well		OIL WELL <input checked="" type="checkbox"/>		GAS WELL <input type="checkbox"/>		OTHER <input type="checkbox"/>	
2. Name of Operator		Tesoro Petroleum Corporation		SINGLE ZONE <input checked="" type="checkbox"/>		MULTIPLE ZONE <input type="checkbox"/>	
3. Address of Operator		8520 Crownhill Blvd., San Antonio, Texas 78209		9. Well No.		1-4	
4. Location of Well		UNIT LETTER A LOCATED 925 FEET FROM THE North LINE		10. Leasehold Pool, or Wildcat		Hospah Sand Unit	
AND 1330 FEET FROM THE East LINE OF SEC. 1 TWP. 17N RGE. 9W NMPM				12. County		McKinley	
19. Proposed Depth		1580'		19A. Formation		Hospah	
20. Rotary or C.T.		Rotary		21. Elevations (Show whether DF, RT, etc.)		6941' Ground	
21A. Kind & Status Plug. Bond		Blanket		21B. Drilling Contractor		Aztec Well Service	
22. Approx. Date Work will start		Aug. 20, 1971					

## 23. PROPOSED CASING AND CEMENT PROGRAM

SIZE OF HOLE	SIZE OF CASING	WEIGHT PER FOOT	SETTING DEPTH	SACKS OF CEMENT	EST. TOP
12-1/4"	8-5/8"	24.0	60'	50 sx	Circulate
7-7/8"	5-1/2"	14.0	1540'	150 sx	870'
4-3/4"	Open Hole	To	1580'		

We propose to drill a 12 1/4" surface hole and set 60' - 8-5/8" surface pipe. We will drill to 1540' and run an electric log. We will set 5 1/2" casing in the top of the Upper Hospah sand. We will then deepen and complete open hole in the Upper Hospah sand as a producer in the unit waterflood.



IN ABOVE SPACE DESCRIBE PROPOSED PROGRAM: IF PROPOSAL IS TO DEEPEN OR PLUG BACK, GIVE DATA ON PRESENT PRODUCTION ZONE AND PROPOSED NEW PRODUCTION ZONE. GIVE BLOWOUT PREVENTER PROGRAM, IF ANY.

I hereby certify that the information above is true and complete to the best of my knowledge and belief.

Signed R.H. Dierman Title Mgr. Prod. Engr. Date August 12, 1971

(This space for State Use)

APPROVED BY Emory C. Lewis TITLE SUPERVISOR DIST. #3 DATE Aug 15 - 1971

CONDITIONS OF APPROVAL, IF ANY:

NEW MEXICO OIL CONSERVATION COMMISSION  
WELL LOCATION AND ACREAGE DEDICATION PLAT

Form C-102  
Supersedes C-126  
Effective 1-1-65

All distances must be from the corner boundaries of the Section

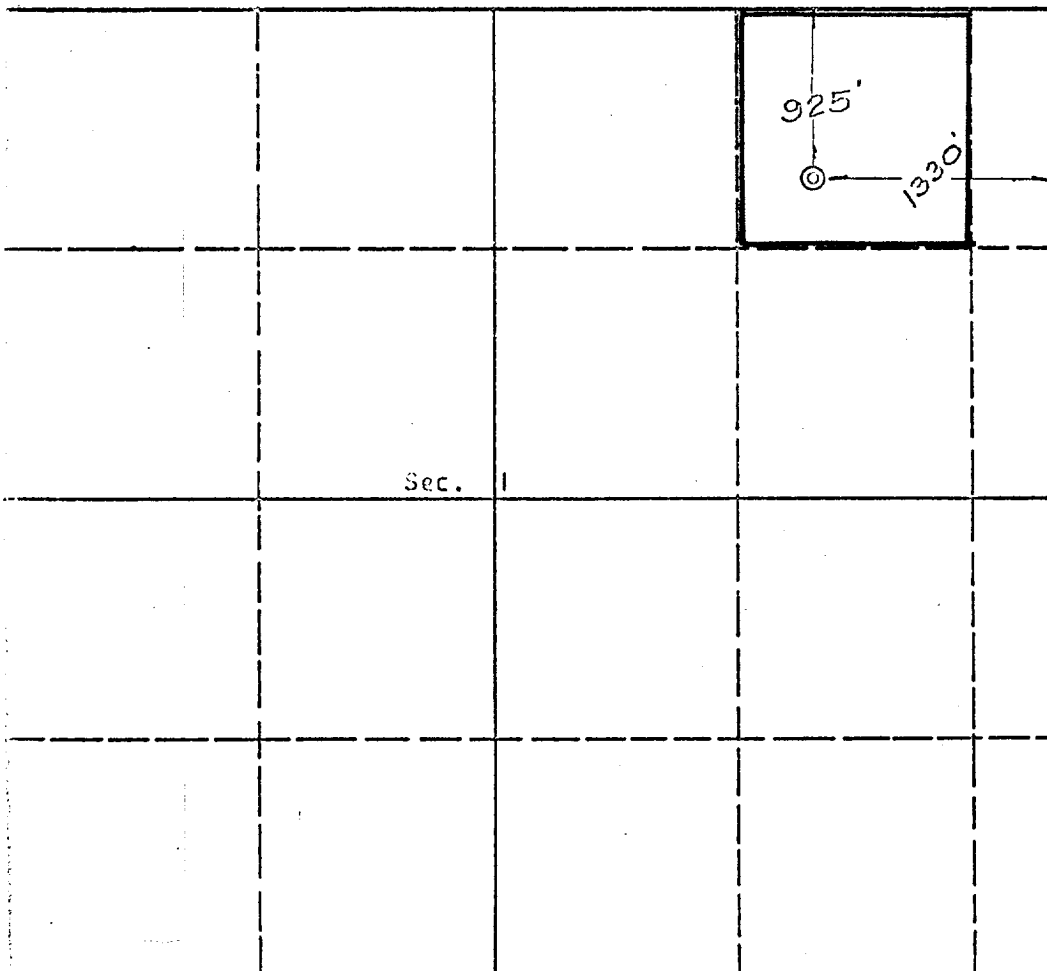
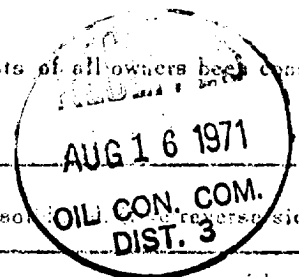
Operator <b>Tesoro Petroleum Corporation</b>			Lease <b>Hospah Sand Unit</b>		Well No. <b>154</b>
Unit Letter <b>A</b>	Section <b>1</b>	Township <b>17 North</b>	Range <b>9 West</b>	County <b>McKinley</b>	
Actual Footage Location of Well:					
<b>925</b>	feet from the	<b>North</b>	line and	<b>1330</b>	feet from the
Ground Level Elev: <b>6941</b>		Producing Formation <b>Hospah</b>	Pool <b>Upper</b>	Dedicated Acreage: <b>NA</b>	
				Acres	

1. Outline the acreage dedicated to the subject well by colored pencil or hatchure marks on the plat below.
2. If more than one lease is dedicated to the well, outline each and identify the ownership thereof (both as to working interest and royalty).
3. If more than one lease of different ownership is dedicated to the well, have the interests of all owners been consolidated by communization, unitization, force-pooling, etc?

☒ Yes ☐ No If answer is "yes" type of consolidation **Unitized**

If answer is "no" list the owners and tract descriptions which have actually been consolidated (by communization, unitization, force-pooling, or otherwise) or until a non-standard unit, eliminating such interests, has been approved by the Commission.

No allowable will be assigned to the well until all interests have been consolidated (by communization, unitization, force-pooling, or otherwise) or until a non-standard unit, eliminating such interests, has been approved by the Commission.



CERTIFICATION

I hereby certify that the information contained herein is true and complete to the best of my knowledge and belief.

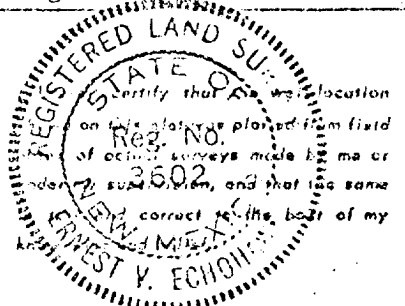
*R. H. Denman*

Name  
**R. H. Denman**

Position  
**Manager of Prod. Eng.**

Company  
**Tesoro Petroleum Corp.**

Date  
**August 13, 1971**



Date Surveyed  
**August 8, 1971**

Registered Professional Engineer and/or Land Surveyor

*E. V. Echohawk*

Certificate No. **2602**  
**E. V. Echohawk L.S.**