

30-031-20455

Form C-101  
Revised 1-1-65

NEW MEXICO OIL CONSERVATION COMMISSION

NO. OF COPIES RECEIVED	5
DISTRIBUTION	
SANTA FE	1
FILE	1
U.S.G.S.	1
LAND OFFICE	1
OPERATOR	1

5A. Indicate Type of Lease  
STATE  FEE

5. State Oil & Gas Lease No.

APPLICATION FOR PERMIT TO DRILL, DEEPEN, OR PLUG BACK

1a. Type of Work  
DRILL  DEEPEN  PLUG BACK

b. Type of Well  
OIL WELL  GAS WELL  OTHER  SINGLE ZONE  MULTIPLE ZONE

7. Unit Agreement Name

2. Name of Operator  
FILON EXPLORATION CORPORATION (c/o Minerals Management Inc.)

8. Farm or Lease Name  
Santa Fe

3. Address of Operator  
501 Airport Dr. Suite 210 Farmington, New Mexico 87401

9. Well No.  
#1

4. Location of Well  
UNIT LETTER E LOCATED 2310 FEET FROM THE North LINE  
AND 330 FEET FROM THE West LINE OF SEC. 27 TWP. 19N RGE. 6W NMPM

10. Field and Pool, or Wildcat  
Wildcat

12. County  
McKinley

19. Proposed Depth 4500 19A. Formation Dakota 20. Rotary or C.T. Rotary

21. Elevations (Show whether DF, RT, etc.) 6928 21A. Kind & Status Plug. Bond - 21B. Drilling Contractor - 22. Approx. Date Work will start July 3, 1975

PROPOSED CASING AND CEMENT PROGRAM

SIZE OF HOLE	SIZE OF CASING	WEIGHT PER FOOT	SETTING DEPTH	SACKS OF CEMENT	EST. TOP
15"	10 3/4	40.5	200	200	Circ.
8 3/4"	To be determined				

Filon Exploration Corporation (Operator) proposes to drill well to 4500' to test Dakota formation. Completion casing and interval will be determined from logs and test data.

APPROVAL VALID FOR 90 DAY PERIOD DRILLING COMMENCED. EXPIRES 9-22-75



IN ABOVE SPACE DESCRIBE PROPOSED PROGRAM: IF PROPOSAL IS TO DEEPEN OR PLUG BACK, GIVE DATA ON PRESENT PRODUCTIVE ZONE AND PROPOSED NEW PRODUCTIVE ZONE. GIVE BLOWOUT PREVENTER PROGRAM, IF ANY.

I hereby certify that the information above is true and complete to the best of my knowledge and belief.  
Signed J. Arnold Snell Title Area Manager Minerals Management Inc. Date June 23, 1975

APPROVED BY [Signature] TITLE SUPERVISOR DIST. #3 DATE JUN 24 1975  
CONDITIONS OF APPROVAL, IF ANY:

NEW MEXICO OIL CONSERVATION COMMISSION  
WELL LOCATION AND ACREAGE DEDICATION PLAT

Form C-102  
Supersedes C-128  
Effective 1-1-65

All distances must be from the outer boundaries of the Section.

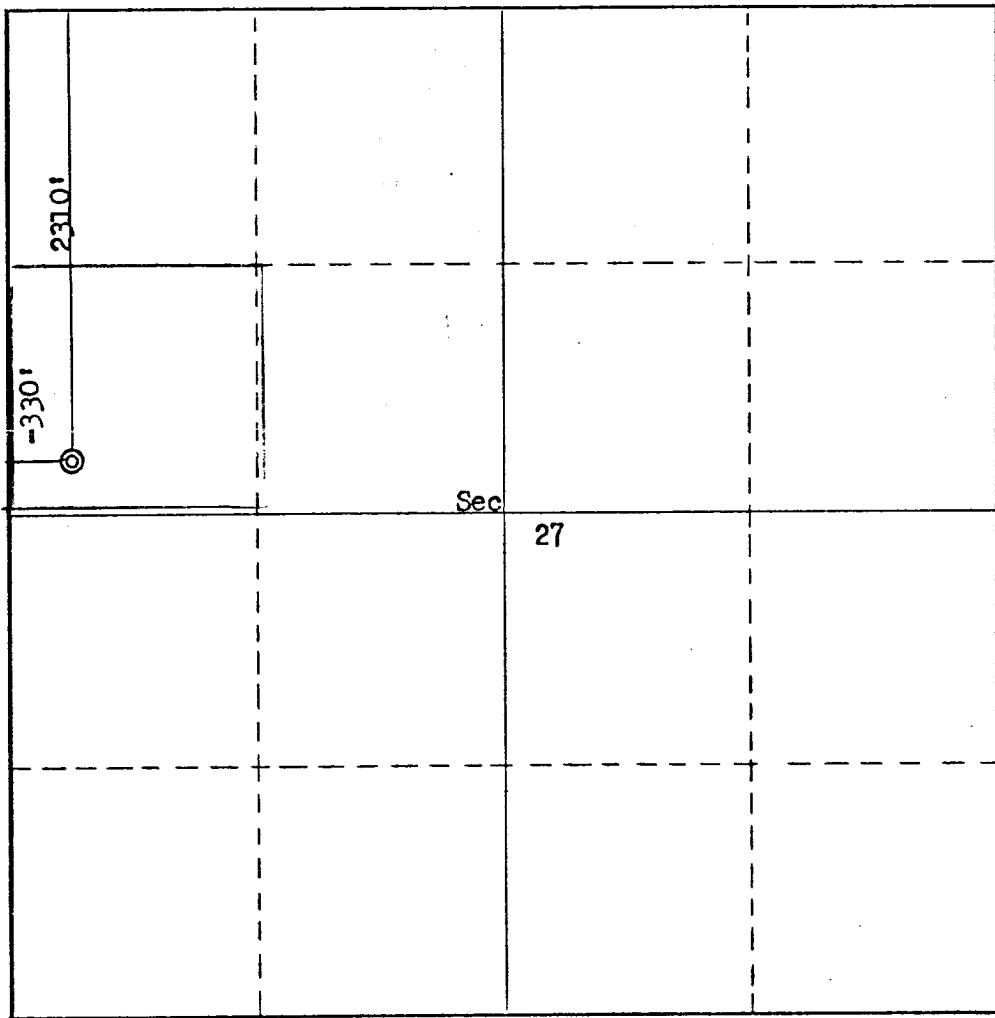
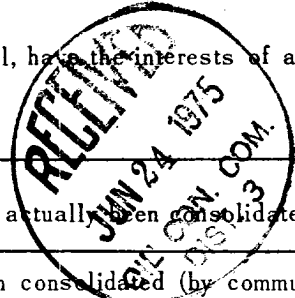
Operator <b>Filon Exploration Company</b>		Lease <b>Santa Fe</b>		Well No. <b>1</b>
Unit Letter <b>E</b>	Section <b>27</b>	Township <b>19N</b>	Range <b>6W</b>	County <b>McKinley</b>
Actual Footage Location of Well: <b>2310</b> feet from the <b>North</b> line and <b>330</b> feet from the <b>West</b> line				
Ground Level Elev. <b>6928</b>	Producing Formation <b>Dakota</b>	Pool <b>WILDCAT</b>	Dedicated Acreage: <b>40</b> Acres	

1. Outline the acreage dedicated to the subject well by colored pencil or hachure marks on the plat below.
2. If more than one lease is dedicated to the well, outline each and identify the ownership thereof (both as to working interest and royalty).
3. If more than one lease of different ownership is dedicated to the well, have the interests of all owners been consolidated by communitization, unitization, force-pooling, etc?

Yes  No If answer is "yes," type of consolidation \_\_\_\_\_

If answer is "no," list the owners and tract descriptions which have actually been consolidated. (Use reverse side of this form if necessary.) \_\_\_\_\_

No allowable will be assigned to the well until all interests have been consolidated (by communitization, unitization, forced-pooling, or otherwise) or until a non-standard unit, eliminating such interests, has been approved by the Commission.



CERTIFICATION

I hereby certify that the information contained herein is true and complete to the best of my knowledge and belief.

Name  
*J. Asmudshell*  
Position  
**AREA MANAGER**  
Company  
**MINERALS MANAGEMENT INC.**  
Date  
**JUNE 23, 1975**

I hereby certify that the well location shown on this plat was plotted from field notes of actual surveys made by me or under my supervision, and that the same is true and correct to the best of my knowledge and belief.

Date Surveyed  
**June 19, 1975**  
Registered Professional Engineer and/or Land Surveyor  
*Fred B. Kerr Jr.*  
**Fred B. Kerr Jr.**  
Certificate No.  
**3950**

