

UNITED STATES
DEPARTMENT OF THE INTERIOR
GEOLOGICAL SURVEY

APPLICATION FOR PERMIT TO DRILL, DEEPEN, OR PLUG BACK

30-031-20629

5. LEASE DESIGNATION AND SERIAL NO.

6. IF INDIAN, ALLOTTEE OR TRIBE NAME

Noo-C-14-20-4402

7. UNIT AGREEMENT NAME

N/A

8. FARM OR LEASE NAME

Noo-Navajo

9. WELL NO.

3

10. FIELD AND POOL, OR WILDCAT

Franciscan Lave MV

11. SEC., T., R., M., OR BLK.
AND SURVEY OR AREA

Sec. 13, T20N, R6W

12. COUNTY OR PARISH

McKinley

13. STATE

N.M.

1a. TYPE OF WORK

DRILL ☒

DEEPEN ☐

PLUG BACK ☐

b. TYPE OF WELL

OIL
WELL ☒

GAS
WELL ☐

OTHER

SINGLE
ZONE ☐

MULTIPLE
ZONE ☐

2. NAME OF OPERATOR

Basin Fuels, Incorporated

3. ADDRESS OF OPERATOR

Suite 300, 300 W. Arrington, Farmington, N.M. 87401

4. LOCATION OF WELL (Report location clearly and in accordance with any State requirements.)*

At surface

1650' FNL, 1650' FEL

At proposed prod. zone

Same

14. DISTANCE IN MILES AND DIRECTION FROM NEAREST TOWN OR POST OFFICE*

22 miles SE Counselor, N.M.; 5 miles SW Ojo Encino School

15. DISTANCE FROM PROPOSED*

LOCATION TO NEAREST
PROPERTY OR LEASE LINE, FT.
(Also to nearest drlg. unit line, if any)

990'

16. NO. OF ACRES IN LEASE

480

17. NO. OF ACRES ASSIGNED
TO THIS WELL

40 if oil; 160 if gas

18. DISTANCE FROM PROPOSED LOCATION*

TO NEAREST WELL, DRILLING, COMPLETED,
OR APPLIED FOR, ON THIS LEASE, FT.

1320'

19. PROPOSED DEPTH

3000'

20. ROTARY OR CABLE TOOLS

Rotary

21. ELEVATIONS (Show whether DF, RT, GR, etc.)

6715'

22. APPROX. DATE WORK WILL START*

December 2, 1977

23.

PROPOSED CASING AND CEMENTING PROGRAM

SIZE OF HOLE	SIZE OF CASING	WEIGHT PER FOOT	SETTING DEPTH	QUANTITY OF CEMENT
11 1/2	8-5/8	24#	100	100 sx.
7-7/8	4-1/2	9.50#	3000	150 sx.

Set 8-5/8 surface casing at 100' and circulate cement. Drill to 3000'; run logs, if production is indicated, set and cement 4-1/2" production casing with 150 sacks cement. Gun perforate, fracture treat in a completion attempt. If non-commercial, will plug and abandon in accordance with U.S.G.S. abandonment instructions and restore surface.

A 10" Shaffer 3000 Series blow-out preventer will be used at all times material to the drilling of the well in question.

IN ABOVE SPACE DESCRIBE PROPOSED PROGRAM: If proposal is to deepen or plug back, give data on present productive zone and proposed new productive zone. If proposal is to drill or deepen directionally, give pertinent data on subsurface locations and measured and true vertical depths. Give blowout preventer program, if any.

24.

SIGNED

Neil B. Burr

TITLE President

DATE November 7, 1977

(This space for Federal or State office use)

PERMIT NO.

APPROVAL DATE

APPROVED BY

TITLE

DATE

CONDITIONS OF APPROVAL, IF ANY:

Okal

*See Instructions On Reverse Side

**NEW MEXICO OIL CONSERVATION COMMISSION
WELL LOCATION AND ACERAGE DEDICATION PLAT**

All distances must be from the outer boundaries of the Section

Operator BASIN FUELS, INCORPORATED			Lease NOO-NAVAJO		Well No. 3
Unit Letter	Section 13	Township 20 NORTH	Range 6 WEST	County MCKINLEY	
Actual Footage Location of Well: 1650 feet from the NORTH line and 1650 feet from the EAST line					
Ground Level Elev. 6715	Producing Formation Mesaverde		Pool Franciscan Lake Mesaverde		Dedicated Acreage: 40 Acres

1. Outline the acreage dedicated to the subject well by colored pencil or hatchure marks on the plat below.
2. If more than one lease is dedicated to the well, outline each and identify the ownership thereof (both as to working interest and royalty),
3. If more than one lease of different ownership is dedicated to the well, have the interests of all owners been consolidated by communitization, unitization, force-pooling, etc?

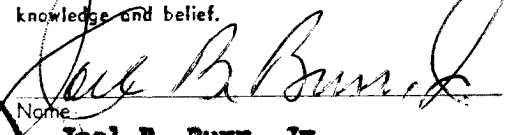
() Yes () No If answer is "yes," type of consolidation

If answer is "no," list the owners and tract descriptions which have actually consolidated. (Use reverse side of this form if necessary.)

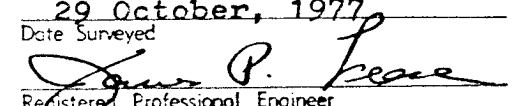
No allowable will be assigned to the well until all interests have been consolidated (by communitization, unitization, forced-pooling, or otherwise) or until a non standard unit, eliminating such interests, has been approved by the Commission.

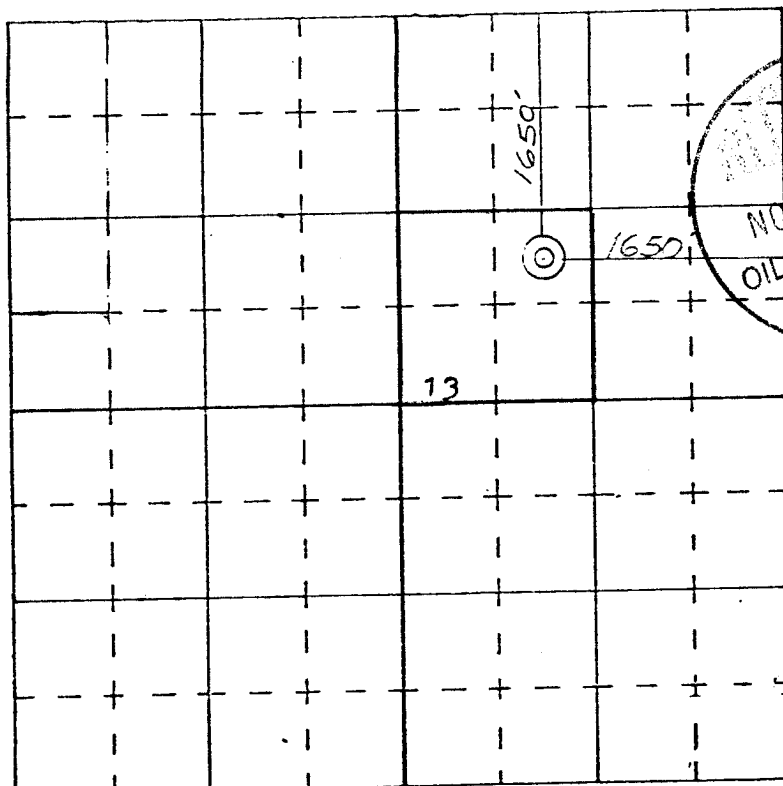
CERTIFICATION

I hereby certify that the information contained herein is true and complete to the best of my knowledge and belief.


 Name **Joel B. Burr, Jr.**
 Position **President**
 Company **BBasin Fuels, Incorporated**
 Date **November 4, 1977**

I hereby certify that the well location shown on this plat was plotted from field notes of actual surveys made by me or under my supervision, and that the same is true and correct to the best of my knowledge and belief.

29 October, 1977
 Date Surveyed

 Registered Professional Engineer
 and/or Land Surveyor



SCALE—4 INCHES EQUALS 1 MILE

DEVELOPMENT PLAN FOR SURFACE RESUME

COMPANY:

Basin Fuels, Incorporated
Suite 300, 300 W. Arrington
Farmington, New Mexico 87401

WELL:

Noo-Navajo No. 3
1650' FNL, 1650' FEL
Sec. 13, T20N, R6W
McKinley County, New Mexico

1. Location and vicinity map, San Juan Engineering Company, Exit Highway 44, 22 miles northwest of lease. Directions to site: at Counselor, N.M. turn right, go 4.5 miles to cross-road, left at cross-road, on Ojo Encino Road, go 14.5 miles; at this point, trail off main road, go south 3 miles to site.
2. No roads required; only slight improvement of existing trail will be required.
3. Eight producing wells, located in the SW SW Sec. 7, SE NW Sec. 7, NW SW Sec. 7, and NW NW Sec. 18, Township 20 North, Range 5 West; SE SE Sec. 12, Township 20 North, Range 6 West, SW NE Sec. 7, Township 20 North, Range 5 West; SE NE Sec. 12, Township 20 North, Range 6 West; and NE NE Sec. 13, Township 20 North, Range 6 West.
4. Roads shown on vicinity plat and location plat.
5. In the event of production, tank battery to be installed on location.
6. Water will come from lease. (Water produced in association with oil production).
7. All trash and waste material to be placed in mud pit and covered. No other surface to be used.
8. None.
9. None
10. Rig layout shown on plat attached. Area is flat with sagebrush. Drilling pad to be compacted.
11. Upon completion of drilling or producing operation, the surface will be leveled and restored in accordance with instructions from appropriate governmental agency.
12. Area is flat, covered with sagebrush. Drill site to be compacted, and upon completion of operation will be leveled and restored.

Field representatives to contact:

In Farmington:

Joel B. Burr, Jr.
Basin Fuels, Incorporated
Suite 300, 300 W. Arrington
Farmington, New Mexico 87401
Phone: (505) 325-1701

Pumper At Location:

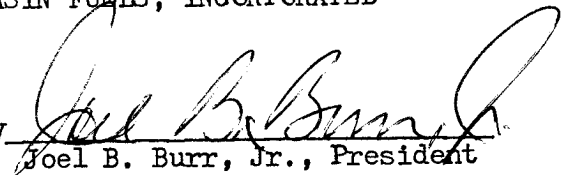
Eugene V. Vigil
P.O. Box 719
Cuba, New Mexico 87613
Phone: (505) 325-1170, Car 120

13. Certification:

I hereby certify that I, or persons under my direct supervision, have inspected the proposed drillsite and access route; that I am familiar with the conditions which presently exist; that the statements made in this plan are, to the best of my knowledge, true and correct; and, that the work associated with the operations proposed herein will be performed by Basin Fuels, Incorporated and its contractors and sub-contractors in conformity with this plan and the terms and conditions under which it is approved.

BASIN FUELS, INCORPORATED

By


Joel B. Burr, Jr., President

November 7, 1977

SUPPLEMENTAL INFORMATION

Re: Application for Permit to Drill
Noo-Navajo No. 3 Well, 1650' FNL, 1650' FEL Sec. 13, T20N, R6W
McKinley County, New Mexico

The following supplemental information is submitted to comply with NTL-6 and should be read in conjunction with form 9-331C, "Application for Permit to Drill, Deepen or Plug Back":

Move in, rig up rotary tools, drill 9-7/8" hole to 100'; run new 7-5/8" 20 lb. K-55 casing and cement with 75 sacks of Class B + 2% calcium chloride. Wait on cement 12 hours, install 6" Guiberson 600 Series blow-out preventer. Blow-out preventer will be pressure tested prior to drilling out from under surface, and tested daily to insure sound mechanical operations.

Well will be drilled with native mud to 1800'; from 1800' to TD a gel chemical system will be used with the following characteristics:

Weight 9 - 9.5 lb. per gallon
Viscosity 35 - 60 seconds per quart
Water loss - less than 10 c.c.

No cores or DSTs will be taken. Upon reaching TD, IES, FDS and Gamma Ray logs will be run. No abnormal temperatures or pressures are expected.

Assuming well is determined to be a producer, new 4 1/2" 9.5 lb. K-55 casing will be set at 3,000 feet and cemented with 125 sacks of Class B + 2% calcium chloride.

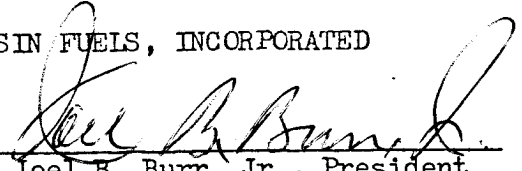
Anticipated formation tips are as follows:

La Ventana	1060'
Chacra	1300'
Cliffhouse	1850'
Menefee	1930'
Point Lookout	2720'

Kelly cocks, floats at the bit, monitoring equipment on the mud system, a sub on the floor with a full opening valve to be stabbed into drill pipe when the kelly is not in the string will be available for use in blow-out control.

Dated: November 7, 1977

BASIN FUELS, INCORPORATED

BY 
Joel B. Burr, Jr., President

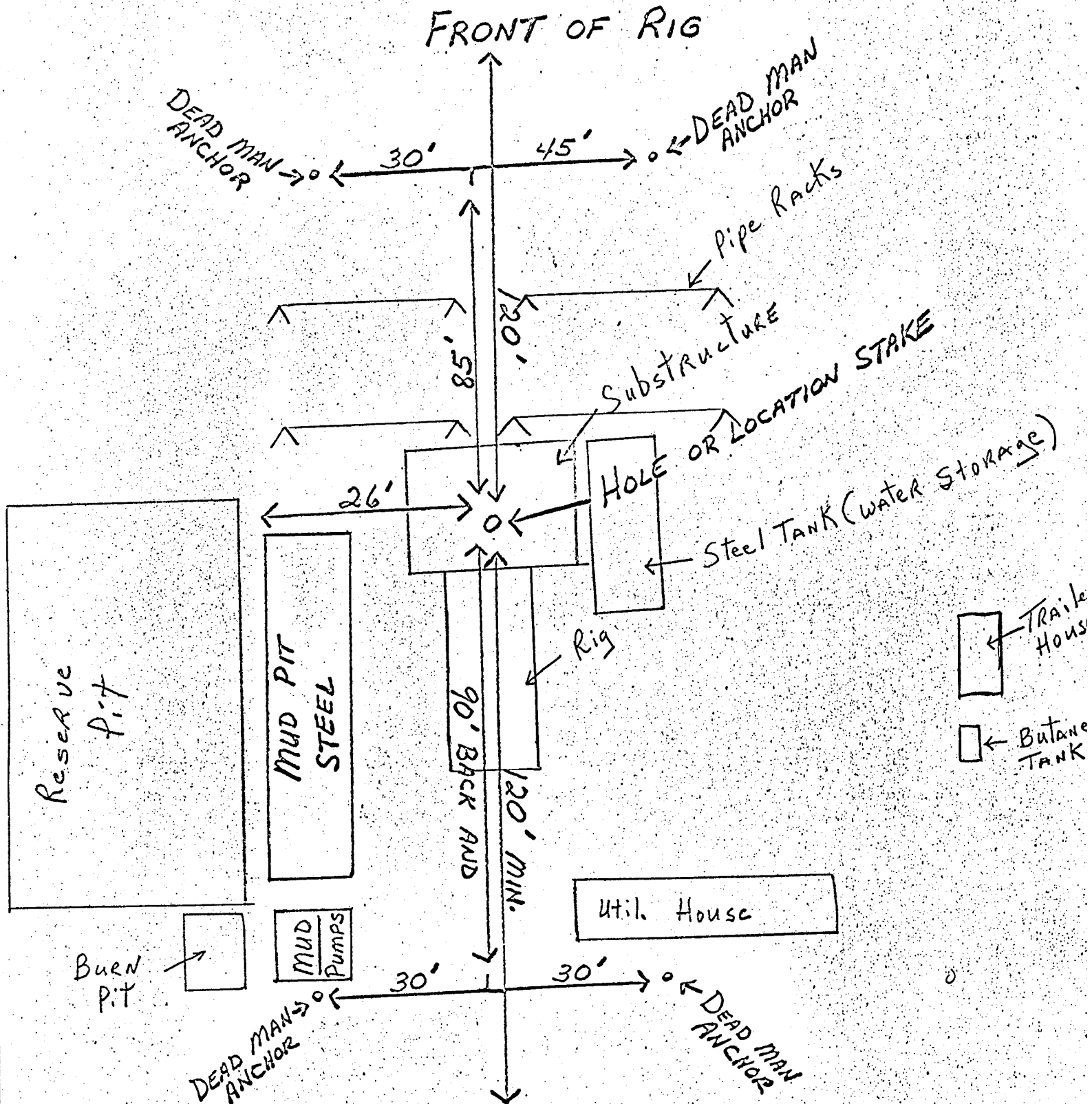
COLEMAN DRILLING CO.

P. O. BOX 1915

FARMINGTON, N. M. 87401

PHONE 508 / 325-6692

RIG #1



RESERVE PIT 150' X 150' X 5' DEEP