

STATE OF NEW MEXICO
ENERGY AND MINERALS DEPARTMENT

OIL CONSERVATION DIVISION

P. O. BOX 2088

SANTA FE, NEW MEXICO 87501

30-031-20763
Form C-101
Revised 10-1-78

NO. OF COPIES RECEIVED	
DISTRIBUTION	
SANTA FE	
FILE	
U.S.G.S.	
LAND OFFICE	
OPERATOR	

5A. Indicate Type of Lease
STATE ☒ FEE ☐
5. State Oil & Gas Lease No.
LG-6570

APPLICATION FOR PERMIT TO DRILL, DEEPEN, OR PLUG BACK

1a. Type of Work b. Type of Well OIL WELL <input checked="" type="checkbox"/> GAS WELL <input type="checkbox"/> OTHER <input type="checkbox"/> DEEPEEN <input type="checkbox"/> PLUG BACK <input type="checkbox"/>				7. Unit Agreement Name --	
2. Name of Operator Wexpro Company				8. Farm or Lease Name Daniel Wash	
3. Address of Operator P. O. Box 1129, Rock Springs, Wyoming 82901				9. Well No. 1	
4. Location of Well UNIT LETTER --- I LOCATED 1900 FEET FROM THE south LINE AND 840 FEET FROM THE east LINE OF SEC. 16 TWP. 18 N RGE. 6 W NMPM				10. Field and Pool, or Wildcat Wildcat Dakota	
				12. County McKinley	
19. Proposed Depth 4000		19A. Formation Morrison		20. Rotary or C.T. Rotary	
21. Elevations (Show whether DF, RT, etc.) GR 6895		21A. Kind & Status Plug. Bond Blanket on file		22. Approx. Date Work will start Upon approval, must be drilling over 1-13-82	
21B. Drilling Contractor Unknown					

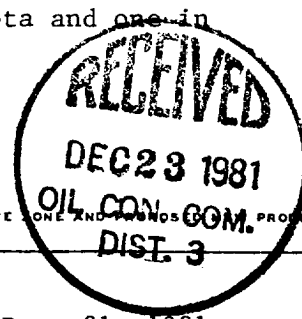
PROPOSED CASING AND CEMENT PROGRAM

SIZE OF HOLE	SIZE OF CASING	WEIGHT PER FOOT	SETTING DEPTH	SACKS OF CEMENT	EST. TOP
12-1/4	9-5/8	36	150	100	Surface
7-7/8	5-1/2	15.5	4000	To be determined	2400
				sufficient to cover monefee	

Wexpro Company plans to drill the subject well with mud to test the Gallup and Dakota formations. After surface casing is set, a 10-inch 3000 psi double gate blowout preventer will be installed. Surface casing and all preventer rams will be pressure tested to 1000 psi for 15 minutes using the rig pump and mud. Logs: Dual induction laterolog, compensated neutron-formation density gamma ray caliper and compensated sonic and gamma ray logs from surface casing to total depth. If production possible, run 4000' of 5-1/2" casing, 15.5 pound, K-55, cement will be determined from caliper logs; install a 6-inch 5000 psi double gate preventer with blind rams in the bottom and 2-3/8"-inch pipe rams in the top. Blind rams and pipe rams will each be pressure tested to 3000 psi for 15 minutes. We not anticipate fracturing at this time. Four DST's anticipated, three in Dakota and one in Gallup.

APPROVAL VALID
FOR 90 DAYS UNLESS
DRILLING COMMENCED,

EXPIRES June 23, 1982



IN ABOVE SPACE DESCRIBE PROPOSED PROGRAM: IF PROPOSAL IS TO DEEPEEN OR PLUG BACK, GIVE DATA ON PRESENT PRODUCTIVE ZONE AND PROPOSED PRODUCTIVE ZONE. GIVE BLOWOUT PREVENTER PROGRAM, IF ANY.

I hereby certify that the information above is true and complete to the best of my knowledge and belief.

Signed A. J. Maser Title Drilling Superintendent Date Dec. 21, 1981

(This space for State Use)

DEPUTY OIL & GAS INSPECTOR, DIST. #3

APPROVED BY Jeff A. Edmister TITLE DEPUTY OIL & GAS INSPECTOR, DIST. #3 DATE DEC 23 1981
CONDITIONS OF APPROVAL, IF ANY:

All distances must be from the outer boundaries of the Section.

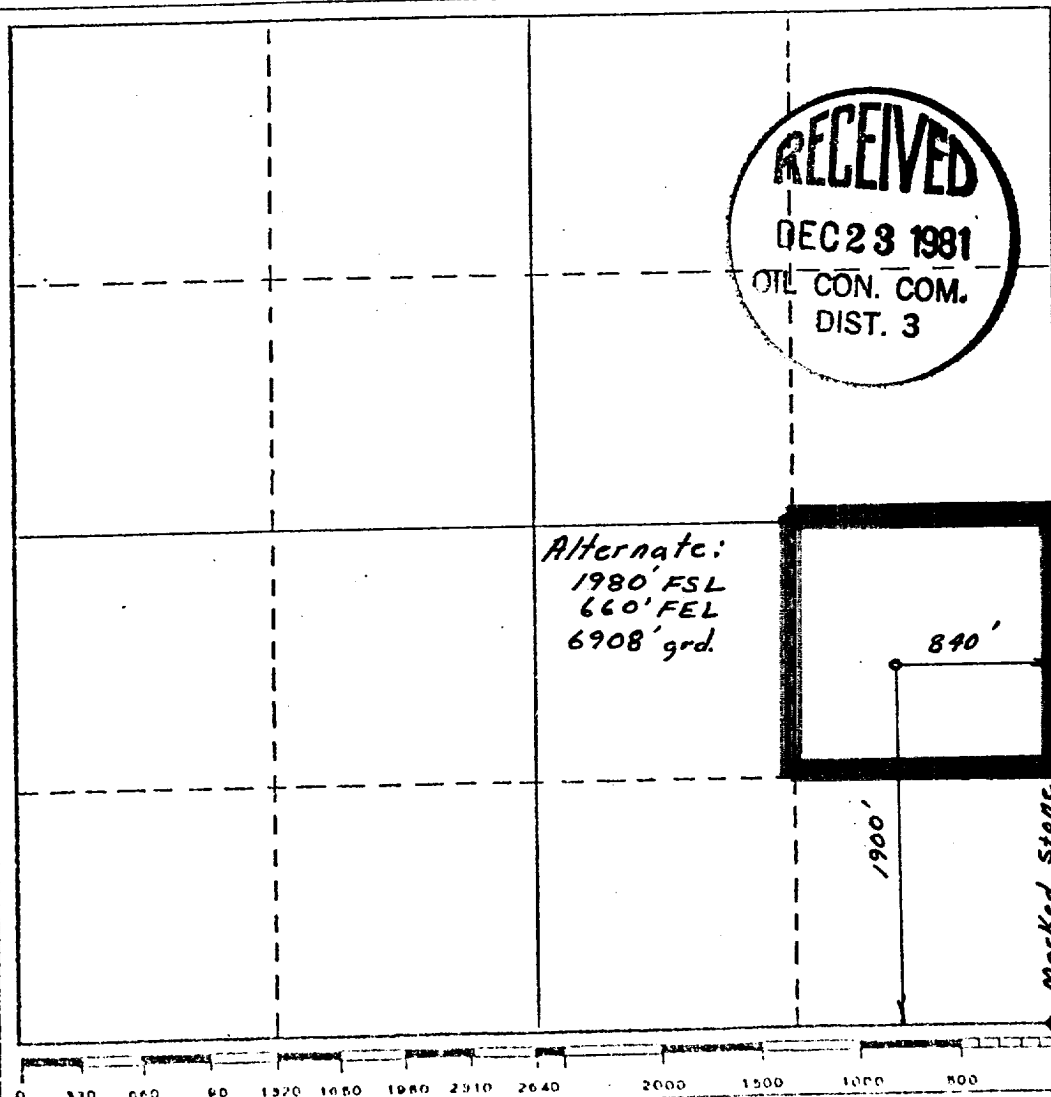
Operator Wexpro		Lease State LG-6570		Well No. #1 Daniel Wash
Unit Letter I	Section 16	Township 18 North	Range 6 West	County McKinley
Actual Footage Location of Well: 1900 feet from the South line and 840 feet from the East line				
Ground Level Elev. 6895'	Producing Formation Dakota	Pool Wildcat	Dedicated Acreage: 40 Acres	

- Outline the acreage dedicated to the subject well by colored pencil or hatchure marks on the plat below.
- If more than one lease is dedicated to the well, outline each and identify the ownership thereof (both as to working interest and royalty). **N/A**
- If more than one lease of different ownership is dedicated to the well, have the interests of all owners been consolidated by communitization, unitization, force-pooling, etc? **N/A**

☐ Yes ☐ No If answer is "yes," type of consolidation _____

If answer is "no," list the owners and tract descriptions which have actually been consolidated. (Use reverse side of this form if necessary.) _____

No allowable will be assigned to the well until all interests have been consolidated (by communitization, unitization, forced-pooling, or otherwise) or until a non-standard unit, eliminating such interests, has been approved by the Division.



CERTIFICATION

I hereby certify that the information contained herein is true and complete to the best of my knowledge and belief.

Name **A. J. Masen**
Position **Drilling Superintendent**
Company **Wexpro Company**
Date **12-21-81**

I hereby certify that the well location shown on this plat was plotted from field notes of actual surveys made by me or under my supervision, and that the same is true and correct to the best of my knowledge and belief.

Date Surveyed **14 Oct. '81**
Registered Professional Engineer and/or Land Surveyor **Derald E. Nuddketo**
Certificate No. **6844**