

DATE OF PERMIT 10/22/82
 COUNTY OF SANTIAGO
 STATE OF NEW MEXICO
 WELL NO. L-6469
 WELL NAME Miguel Creek-Gallup
 OPERATOR CAPITAL OIL & GAS CORPORATION
 ADDRESS P. O. Drawer M, Milan, New Mexico 87021
 DRILLING CONTRACTOR Alamo Drilling, Inc.

OIL CONSERVATION DIVISION
 P. O. BOX 2088
 SANTA FE, NEW MEXICO 87501

Form 10-1
 Revised 10-1-78

30-031-20826

APPLY TO OIL CONSERVATION DIVISION, SANTA FE, NEW MEXICO, OR PLUG BACK

TYPE OF WELL DRILL ☒ DEEPEN ☐ PLUG BACK ☐

NO. OF SPOUTS ☒ ONE ☐ OTHER ☐ SINGLE TUBE ☐ MULTIPLE TUBE ☐

CAPITAL OIL & GAS CORPORATION

P. O. Drawer M Milan, New Mexico 87021

UNIT LETTER L 2310' FEET FROM THE South

990' West 16 16N 6W

Miguel Creek-Gallup

State

State #11

19. Field and Loc. or Wildcat

Wildcat Under Gallup

McKinley

12. Proposed Depth

1300'

13A. Formation

Hospah-Gallup

20. Industry or C.T.

Rotary

21A. Cement & Grout Bond 6507.63'

50,000

21B. Drilling Contractor

Alamo Drilling, Inc.

22. Approx. Date Work will start

10-22-82

PROPOSED CASING AND CEMENT PROGRAM

SIZE OF HOLE	SIZE OF CASING	WEIGHT PER FOOT	SETTING DEPTH	SACKS OF CEMENT	EST. TOP
12 1/4	8 5/8	24	90 ft.	85	Surface
7 7/8	5 1/2	15-50	TD	175	400

1. Drill 12 1/4 hole. Set 2 joints 8 5/8. Cement surface.

2. Drill to top of Hospah.

3. Core log. Drill 20' rat hole.

4. If commercially productive, set 4 1/2 casing to total depth and cement with 175 sacks of cement.

APPROVAL VALID
 FOR 30 DAYS UNLESS
 DRILLING COMMENCED,

EXPIRES 5-8-83

BELOW SPACE DESCRIBE PROPOSED PROGRAM; IF PROPOSAL IS TO DEEPEN OR PLUG BACK, GIVE DATA ON PRESENT PRODUCTIVE ZONE AND PROPOSED NEW PRODUCTIVE ZONE. GIVE SLOUGH PREVENTER PROGRAM, IF ANY.

I hereby certify that the information above is true and complete to the best of my knowledge and belief.

Title Representative

Date 10/22/82

(This space for State Use)

SUPERVISOR DISTRICT #3

NOV 8 1982

PROVED BY

TITLE

DATE

CONDITIONS OF APPROVAL, IF ANY:

Joint with wells # 7, 8, + 12

OIL CONSERVATION DIVISION

P. O. BOX 2088

SANTA FE, NEW MEXICO 87501

Form C-102
Revised 10-1-78*Milan Office*

All distances must be from the outer boundaries of the Section.

Capital Oil & Gas			Lease State Lease L-6469		Well No. State #11
Section 16	Township 16N.	Range 6W.	County Mckinley		
Footage Location of Well: 2310' feet from the South line and 990' feet from the West line					
Level Elev. 507.63'	Producing Formation Hospah-Gallup	Pool Undes	Dedicated Acreage: 40 Joint with wells # 7, 8, 12 Acres		

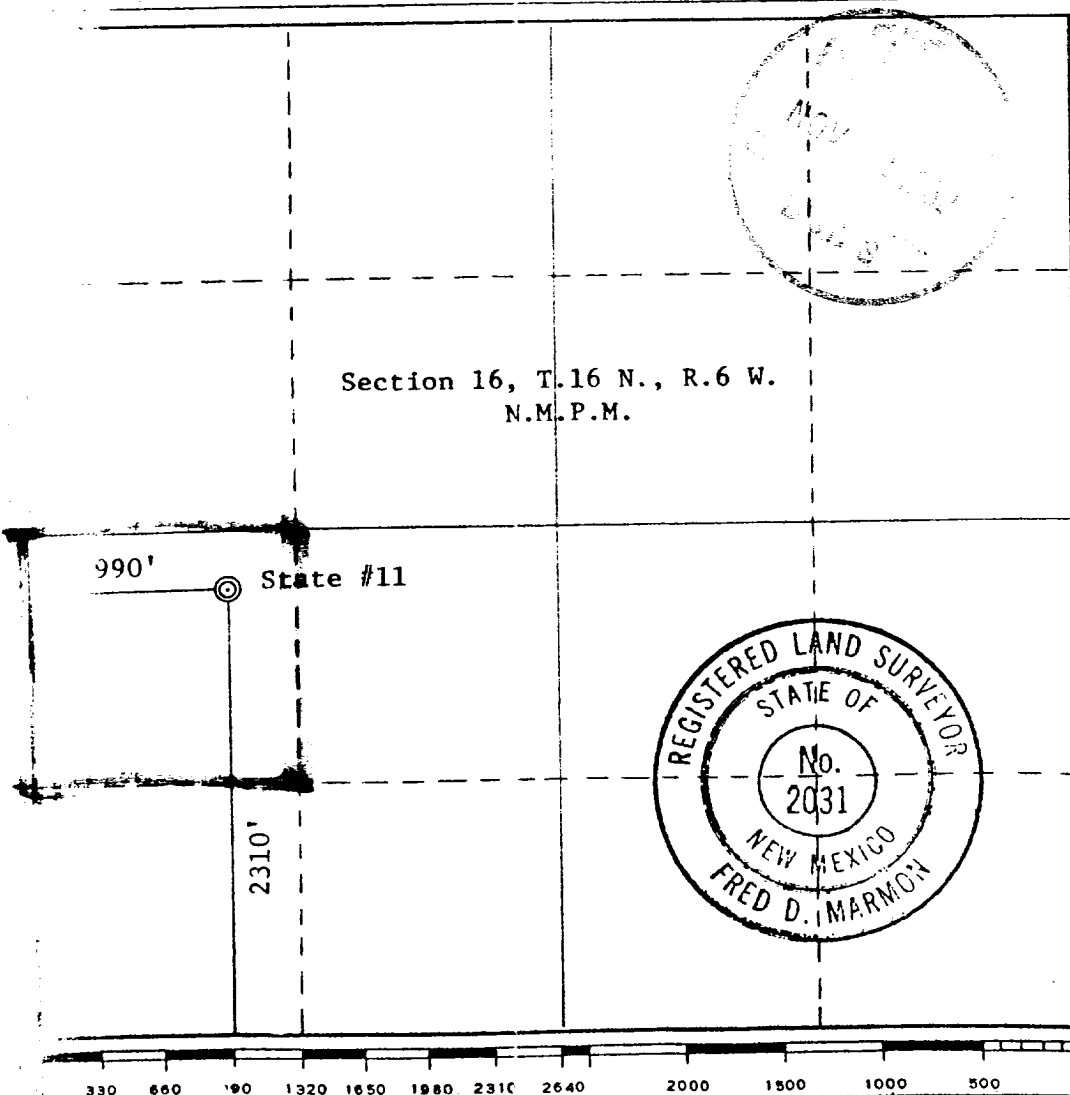
Outline the acreage dedicated to the subject well by colored pencil or hatchure marks on the plat below.

If more than one lease is dedicated to the well, outline each and identify the ownership thereof (both as to working interest and royalty).

If more than one lease of different ownership is dedicated to the well, have the interests of all owners been consolidated by communitization, unitization, force-pooling, etc?

☐ Yes ☒ No If answer is "yes," type of consolidation _____If answer is "no," list the owners and tract descriptions which have actually been consolidated. (Use reverse side of this form if necessary.) Golden Exploration owns 100%

No allowable will be assigned to the well until all interests have been consolidated (by communitization, unitization, forced-pooling, or otherwise) or until a non-standard unit, eliminating such interests, has been approved by the Commission.



CERTIFICATION

I hereby certify that the information contained herein is true and complete to the best of my knowledge and belief.

[Signature]
Name
Representative

Position
Capital Oil & Gas

Company
October 22, 1982

Date

I hereby certify that the well location shown on this plat was plotted from field notes of actual surveys made by me or under my supervision, and that the same is true and correct to the best of my knowledge and belief.

Date Surveyed
March 19, 1982

Registered Professional Engineer
and/or Land Surveyor

[Signature]
Certificate No. 2031