

UNITED STATES
DEPARTMENT OF THE INTERIOR
BUREAU OF LAND MANAGEMENT

APPLICATION FOR PERMIT TO DRILL, DEEPEN, OR PLUG BACK

1a. TYPE OF WORK

DRILL ☒

DEEPEN ☐

PLUG BACK ☐

b. TYPE OF WELL

OIL
WELL ☒

GAS
WELL ☐

OTHER

SINGLE
ZONE ☐

MULTIPLE
ZONE ☐

2. NAME OF OPERATOR

Geo Engineering, Inc.

3. ADDRESS OF OPERATOR

P.O. Box 1417, Socorro, New Mexico 87801

4. LOCATION OF WELL (Report location clearly and in accordance with any State requirements.)

At surface

1652', FNL, 939', FEL

At proposed prod. zone

14. DISTANCE IN MILES AND DIRECTION FROM NEAREST TOWN OR POST OFFICE*

9-1/4 Miles from White Horse

15. DISTANCE FROM PROPOSED*

LOCATION TO NEAREST

PROPERTY OR LEASE LINE, FT.

(Also to nearest drlg. unit line, if any) 939'

18. DISTANCE FROM PROPOSED LOCATION*

TO NEAREST WELL, DRILLING, COMPLETED,
OR APPLIED FOR, ON THIS LEASE, FT.

330'

21. ELEVATIONS (Show whether DF, RT, GR, etc.)

6461 GR

23.

PROPOSED CASING AND CEMENTING PROGRAM

This action is subject to administrative
appeal pursuant to 30 CFR 290.

SIZE OF HOLE	SIZE OF CASING	WEIGHT PER FOOT	SETTING DEPTH	QUANTITY OF CEMENT
9"	7"	11# J-55	100	35ft ³
6-3/4"	4-1/2	10# J-55	1100	236.5 cu ft

Operator proposes to drill a 9" hole to a depth of 100' and, then a 6-3/4" hole to a depth of 1100' to evaluate the Menefee sands of the mesa verde formation. If oil is encountered in economic quantities, 4-1/2 casing will be run to pay zone.

RECEIVED
FEB 28 1985
OIL CON. DIV.
DIST. 3

IN ABOVE SPACE DESCRIBE PROPOSED PROGRAM: If proposal is to deepen or plug back, give data on present productive zone and proposed new productive zone. If proposal is to drill or deepen directionally, give pertinent data on subsurface locations and measured and true vertical depths. Give blowout preventer program, if any.

24.

SIGNED

TITLE

(This space for Federal or State office use)

PERMIT NO.

APPROVAL DATE

APPROVED BY

TITLE

CONDITIONS OF APPROVAL, IF ANY:

oh

NMOCC

*See Instructions On Reverse Side

Title 18 U.S.C. Section 1001 makes it a crime for any person knowingly and willfully to make to any department or agency of the

APPROVED
AS AMENDED
FEB 13 1985
/s/ J. Stap McKee
AREA MANAGER
FARMINGTON RESOURCE AREA

OIL CONSERVATION DIVISION

STATE OF NEW MEXICO
ENERGY AND MINERALS DEPARTMENTP. O. BOX 2088
SANTA FE, NEW MEXICO 87501Form C-102
Revised 10-1-79

All distances must be from the outer boundaries of the Section

Operator Geo Engineering, Inc.		Lease Federal "A"		Well No. 5	
Unit Letter H	Section 30	Township T.20.N	Range R.9W	County McKiley	
Actual Footage Location of Well: 1652 feet from the North line and 939 feet from the East line					
Ground Level Elev. 6461 GL	Producing Formation Mensfee		Pool Wildcat		Dedicated Acreage: 40 Acres

1. Outline the acreage dedicated to the subject well by colored pencil or hatchure marks on the plat below.
2. If more than one lease is dedicated to the well, outline each and identify the ownership thereof (both as to working interest and royalty).
3. If more than one lease of different ownership is dedicated to the well, have the interests of all owners been consolidated by communitization, unitization, force-pooling, etc?

☐ Yes ☐ No If answer is "yes," type of consolidation _____

If answer is "no," list the owners and tract descriptions which have actually been consolidated. (Use reverse side of this form if necessary.) _____

No allowable will be assigned to the well until all interests have been consolidated (by communitization, unitization, forced-pooling, or otherwise) or until a non-standard unit, eliminating such interests, has been approved by the Division.

RECEIVED FEB 28 1985 OIL CON. DIV. DIST. 3		RECEIVED FEB 28 1984 BUREAU OF LAND MANAGEMENT SANTA FE, NEW MEXICO	

CERTIFICATION

I hereby certify that the information contained herein is true and complete to the best of my knowledge and belief.

James R. Woods
Name
James R. Woods
Position
Geologist
Company
Geo Engineering, Inc.
Date
August 15, 1984

I hereby certify that the well location shown on this plat was plotted from field notes of actual surveys made by me or under my supervision, and that the same is true and correct to the best of my knowledge and belief.

Date Surveyed
August 3, 1984

Registered Professional Engineer
and/or Land Surveyor

Jack Sullivan
Certificate No.

4051

0 330 660 990 1320 1650 1980 2310 2640 2970 3300 3630 3960 4290 4620 4950 5280 5610 5940 6270 6600 6930 7260 7590 7920 8250 8580 8910 9240 9570 9900

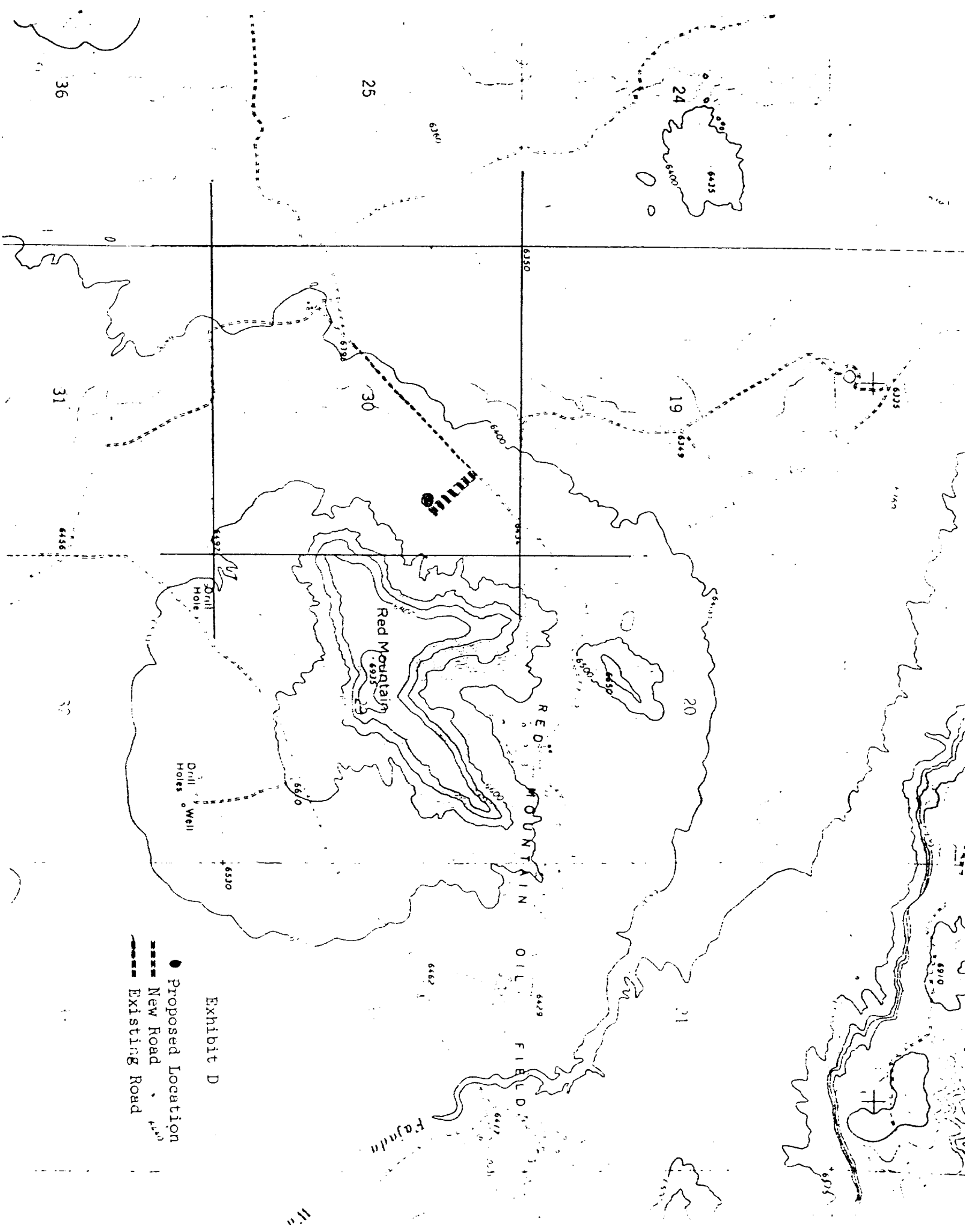


Exhibit D

● Proposed Location

--- New Road

--- Existing Road