

Submit 3 Copies
to Appropriate
District Office

State of New Mexico
Energy, Minerals and Natural Resources Department

Form C-103
Revised 1-1-89

DISTRICT I
P.O. Box 1980, Hobbs, NM 88240

DISTRICT II
P.O. Drawer DD, Artesia, NM 88210

DISTRICT III
1000 Rio Brazos Rd., Aztec, NM 87410

OIL CONSERVATION DIVISION
P.O. Box 2088
Santa Fe, New Mexico 87504-2088

WELL API NO. 30-031-20879
5. Indicate Type of Lease STATE <input checked="" type="checkbox"/> FEE <input type="checkbox"/>
6. State Oil & Gas Lease No. V 82-3
7. Lease Name or Unit Agreement Name ZIA (7860)
8. Well No. 1
9. Pool name or Wildcat Pot Mesa Mesaverde (50384)

SUNDRY NOTICES AND REPORTS ON WELLS
(DO NOT USE THIS FORM FOR PROPOSALS TO DRILL OR TO DEEPEN OR PLUG BACK TO A
DIFFERENT RESERVOIR. USE "APPLICATION FOR PERMIT"
(FORM C-101) FOR SUCH PROPOSALS.)

1. Type of Well: OIL WELL <input checked="" type="checkbox"/> GAS WELL <input type="checkbox"/> OTHER	2. Name of Operator Merrion Oil & Gas Corporation (014634)
3. Address of Operator 610 Reilly Avenue, Farmington, NM 87401-2634	4. Well Location Unit Letter 0 : 990 Feet From The south Line and 1980 Feet From The east Line Section 2 Township 20N Range 6W NMPM McKinley County
10. Elevation (Show whether DF, RKB, RT, GR, etc.) 6935' KB	

11. Check Appropriate Box to Indicate Nature of Notice, Report, or Other Data

NOTICE OF INTENTION TO:		SUBSEQUENT REPORT OF:	
PERFORM REMEDIAL WORK <input type="checkbox"/>	PLUG AND ABANDON <input checked="" type="checkbox"/>	REMEDIAL WORK <input type="checkbox"/>	ALTERING CASING <input type="checkbox"/>
TEMPORARILY ABANDON <input type="checkbox"/>	CHANGE PLANS <input type="checkbox"/>	COMMENCE DRILLING OPNS. <input type="checkbox"/>	PLUG AND ABANDONMENT <input type="checkbox"/>
PULL OR ALTER CASING <input type="checkbox"/>	OTHER: <input type="checkbox"/>	CASING TEST AND CEMENT JOB <input type="checkbox"/>	OTHER: <input type="checkbox"/>

12. Describe Proposed or Completed Operations (Clearly state all pertinent details, and give pertinent dates, including estimated date of starting any proposed work) SEE RULE 1103.

Merrion Oil & Gas Corporation proposes to Plug & Abandon the above referenced well
as per the attached procedure.

RECEIVED
FEB 25 1998
OIL CON. DIV.
DIST. 3

I hereby certify that the information above is true and complete to the best of my knowledge and belief.

SIGNATURE Connie Dinning TITLE Contract Engineer DATE 2/25/98
TYPE OR PRINT NAME TELEPHONE NO.

(This space for State Use)

APPROVED BY Johnny Robinson
CONDITIONS OF APPROVAL, IF ANY:

DEPUTY OIL & GAS INSPECTOR, DIST. #3

FEB 25 1998

NOTIFY AZTEC OGD
IN TIME TO WITNESS

* Given to 2-28-98

100-443889

PLUG & ABANDONMENT PROCEDURE

11-12-97

Zia #1

Pot Mesa Mesaverde

990' FSL and 1980' FEL / SE, Section 2, T-20-N, R-6-W
McKinley Co., New Mexico

Note: All cement volumes use 100% excess outside pipe and 50' excess inside pipe. The stabilizing wellbore fluid will be 8.3 ppg, sufficient to balance all exposed formation pressures.

1. Install and test location rig anchors. Prepare blow pit. Comply with all NMOCD, BLM, and Merriam safety regulations.
2. MOL and RU daylight pulling unit. NU relief line. Blow down well and kill with water as necessary.
3. POH and LD 97 3/4" rods and pump. ND wellhead and NU BOP. Test BOP. POH, tally and visually inspect 80 joints 2-3/8" tubing (2457'). If necessary LD 2-3/8" tubing and PU workstring.
4. **Plug #1 (Mesaverde perforations, 2522' - 2241')**: TIH with open ended tubing workstring and tag cement retainer at 2522', or as deep as possible. Load casing with water. Mix 42 sacks Class B cement and spot a balanced plug inside casing from 2522' to 2241' to cover Mesaverde perforations. TOH above cement and WOC. RIH and tag cement. Pressure test casing to 500#. TOH to 2030'.
5. **Plug #2 (Mesaverde top, 2030' - 1930')**: Mix 12 sxs Class B cement and spot a balanced plug inside casing to cover Mesaverde top. TOH to 812'.
6. **Plug #3 (Pictured Cliffs tops, 812' - 712')**: Mix 12 sxs Class B cement and spot a balanced plug inside casing to cover Pictured Cliffs top. TOH and LD tubing.
7. **Plug #4 (Kirtland, Ojo Alamo tops and 8-5/8" casing shoe)**: Perforate 3 HSC squeeze holes at 417'. Establish circulation out bradenhead valve. Mix and pump approximately 120 sxs Class B cement down 4-1/2" casing, circulate good cement out bradenhead valve. Shut in well and WOC.
8. ND BOP and cut off casing below surface. Install P&A marker with cement to comply with regulations. RD, Move off location, cut off anchors and restore location.

Zia #1

Current

Pot Mesa Mesaverde

SE Section 2, T-20-N, R-6-W, McKinley County, NM

Today's Date: 11-12-97
Spud: 5-5-85
Completed: 6-18-85
Elevation: 6922' GL
6935' KB
Logs: IES-GR, CBL

Ojo Alamo @ 273'

Kirtland @ 367'

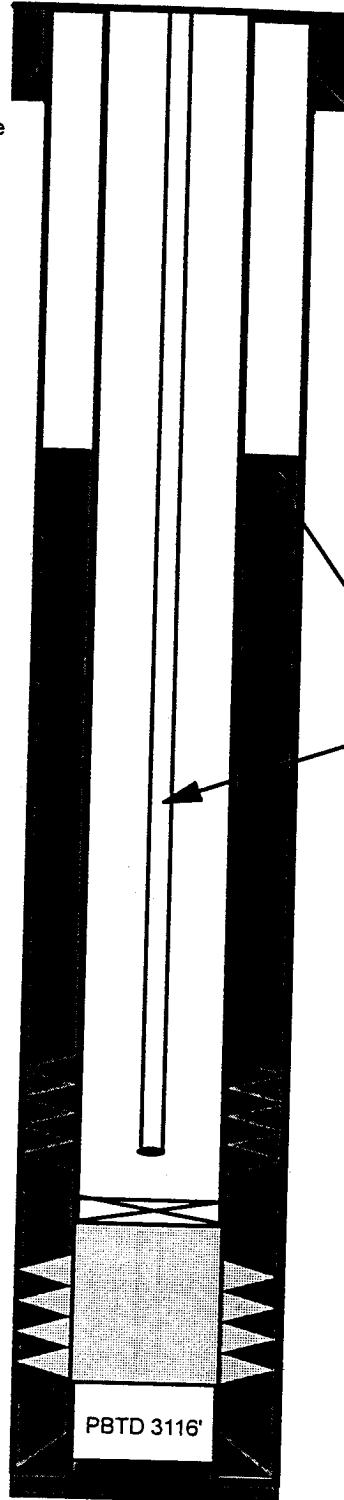
Pictured Cliffs @ 762'

Mesaverde 1980'

Point Lookout @ 3080'

12-1/4" hole

6-3/4" hole



8-5/8" 23#, J-55 Casing set @ 93'
Cmted with 94 cf (Circulated to Surface)

Well History

Oct '85: Swab test initial Menefee perf intervals with RBP and packer; set CR at 2215', sqz 75 sxs below; perf and frac 2291' - 96', 2468' - 72', 2482' - 89'; clean out with bailer; land tubing with rods.

May '90: Hot oil rods, pull tubing; sqz 60 sxs cmt into perfs from 2515' to 1800'; drill out to 3026'; perf and frac coal zones at 2944' - 46' and 3003' - 3062'; land tbq.

Oct '90: Pull rods and tubing; set CR at 2522'; sqz below with 60 sxs cement; perf and frac upper coal zones at 2482' - 2489'; swab and then land tubing and rods.

TOC @ 600' (CBL)

80 joints 2-3/8" tubing @ 2457'
with rods and pump

Mesaverde Perforations:

2291' - 2296'
2468' - 2472'
2482' - 2489'

Cement Retainer @ 2522' (10/90)

2742' - 2748' sqz'd (10/90)
2944' - 2946' sqz'd (10/90)
3003' - 3062' sqz'd (10/90)

4-1/2" 10.5#, J-55 Casing set @ 3159'
Cmt with 300 sxs (532 cf)

TD 3167'

Zia #1

Proposed P&A

Pot Mesa Mesaverde

SE Section 2, T-20-N, R-6-W, McKinley County, NM

Today's Date: 11-12-97

Spud: 5-5-85

Completed: 6-18-85

Elevation: 6922' GL
6935' KB

Logs: IES-GR, CBL

Ojo Alamo @ 273'

Kirtland @ 367'

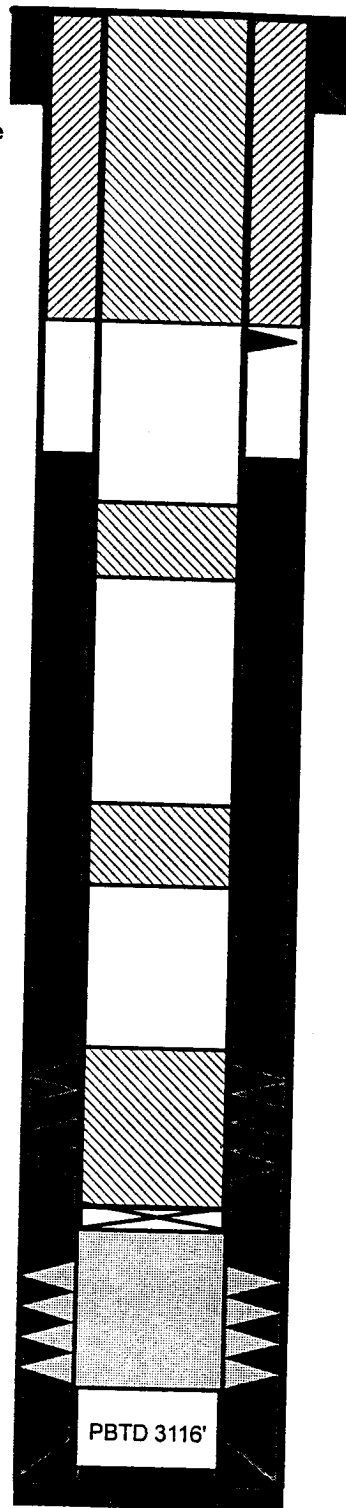
Pictured Cliffs @ 762'

Mesaverde 1980'

Point Lookout @ 3080'

12-1/4" hole

6-3/4" hole



8-5/8" 23#, J-55 Casing set @ 93'
Cmted with 94 cf (Circulated to Surface)

Plug #4 417' - Surface
Cmt with 120 sxs Class B

Perforate @ 417'

TOC @ 600' (CBL)

Plug #3 812' - 712'
Cmt with 12 sxs Class B

Plug #2 2030' - 1930'
Cmt with 12 sxs Class B

Plug #1 2522' - 2241'
Cmt with 42 sxs Class B

Mesaverde Perforations:

2291' - 2296'

2468' - 2472'

2482' - 2489'

Cement Retainer @ 2522' (10/90)

2742' - 2748' sqz'd (10/90)

2944' - 2946' sqz'd (10/90)

3003' - 3062' sqz'd (10/90)

4-1/2" 10.5#, J-55 Casing set @ 3159'
Cmt with 300 sxs (532 cf)

PBD 3116'

TD 3167'