

UNITED STATES  
DEPARTMENT OF THE INTERIOR  
BUREAU OF LAND MANAGEMENT

APPLICATION FOR PERMIT TO DRILL, DEEPEN, OR PLUG BACK

1a. TYPE OF WORK  
 DRILL  DEEPEN  PLUG BACK

b. TYPE OF WELL  
 OIL WELL  GAS WELL  OTHER   
 SINGLE ZONE  MULTIPLE ZONE

2. NAME OF OPERATOR  
 Merrion Oil & Gas Corporation

3. ADDRESS OF OPERATOR  
 P. O. Box 840, Farmington, New Mexico 87499

4. LOCATION OF WELL (Report location clearly and in accordance with any State requirements)  
 At surface 1785' FSL and 2300' FWL  
 At proposed prod. zone Same

14. DISTANCE IN MILES AND DIRECTION FROM NEAREST TOWN OR POST OFFICE\*  
 21 Miles South of Counselors

10. DISTANCE FROM PROPOSED\* LOCATION TO NEAREST PROPERTY OR LEASE LINE, FT. (Also to nearest drlg. unit line, if any) 2980'

18. DISTANCE FROM PROPOSED LOCATION\* TO NEAREST WELL, DRILLING, COMPLETED, OR APPLIED FOR, ON THIS LEASE, FT.

21. ELEVATIONS (Show whether DE, RD, or DRILLING) OPERATIONS AUTHORIZED ARE  
 6870' KB, 6862' GL SUBJECT TO COMPLIANCE WITH ATTACHED

23. "GENERAL REQUIREMENTS" DRILLING AND CEMENTING PROGRAM

SIZE OF HOLE	SIZE OF CASING	WEIGHT PER FOOT	SETTING DEPTH
12-1/4"	8-5/8", J-55	23 #/ft.	90
7-7/8"	5-1/2", J-55	14 #/ft.	3210'

5. LEASE DESIGNATION AND SERIAL NO.  
 NM 53926

6. IF INDIAN, ALLOTTEE OR TRIBE NAME

7. UNIT AGREEMENT NAME

8. FARM OR LEASE NAME  
 Corrales

9. WELL NO.  
 9

10. FIELD AND POOL, OR WILDCAT  
 WC Mesaverde

11. SEC., T., R., M., OR BLK. AND SURVEY OR AREA  
 Sec. 3, T20N, R6W

12. COUNTY OR PARISH  
 McKinley

13. STATE  
 New Mexico

RECEIVED  
 MAY 02 1986

This action is subject to technical and procedural review pursuant to 43 CFR 3105.3 and appeal pursuant to 43 CFR 3105.4.

80 sx (94.4 cu. ft.)  
 350 sx (as below)  
 circulate to surface

Drill Mesaverde test to 3210'. Will set 2 joints 8-5/8", 23 #/ft. J-55 surface casing (estimated 82' in length). at 90' KB with 90 sx Class B 2% CaCl2 (94.4 cu. ft.).  
 Drill 7-7/8" hole to TD. Will run logs. If logs appear productive, will run 5-1/2", 13 #/ft, K-55 to TD and single stage cement with 150 sx Class B 2% D-79 (309 cu. ft.) followed by 200 sx Class H 2% gel (244 cu. ft.). Estimated top of cement - surface.  
 Perforate and stimulate as necessary to test Mesaverde.  
 Pressure control will be 2000 PSI bag type blowout preventer.  
 Drilling circulating medium will be low solids, non-dispersed, low water loss mud using bentonite, starch, CMC and fresh water.

Est. tops on back.

IN ABOVE SPACE DESCRIBE PROPOSED PROGRAM: If proposal is to deepen or plug back, give data on present productive zone and proposed new productive zone. If proposal is to drill or deepen directionally, give pertinent data on subsurface locations and measured and true vertical depths. Give blowout preventer program, if any.

24. SIGNED [Signature] TITLE Operations Manager DATE 4/3/86

PERMIT NO. \_\_\_\_\_ APPROVAL DATE \_\_\_\_\_

APPROVED BY [Signature] TITLE \_\_\_\_\_ DATE \_\_\_\_\_

CONDITIONS OF APPROVAL, IF ANY:  
 NMOCC  
 \*See Instructions On Reverse Side

30-031-20110

RECEIVED  
 JUN 06 1986  
 OIL CON. DIV  
 DIST. 3  
 APPROVED  
 AS ATTENDED  
 JUN 11 1986  
 AREA MANAGER

OIL CONSERVATION DIVISION

STATE OF NEW MEXICO  
ENERGY AND MINERALS DEPARTMENT

P. O. BOX 2088  
SANTA FE, NEW MEXICO 87501

Form C-107  
Revised 10-1-70

All distances must be from the outer boundaries of the Section.

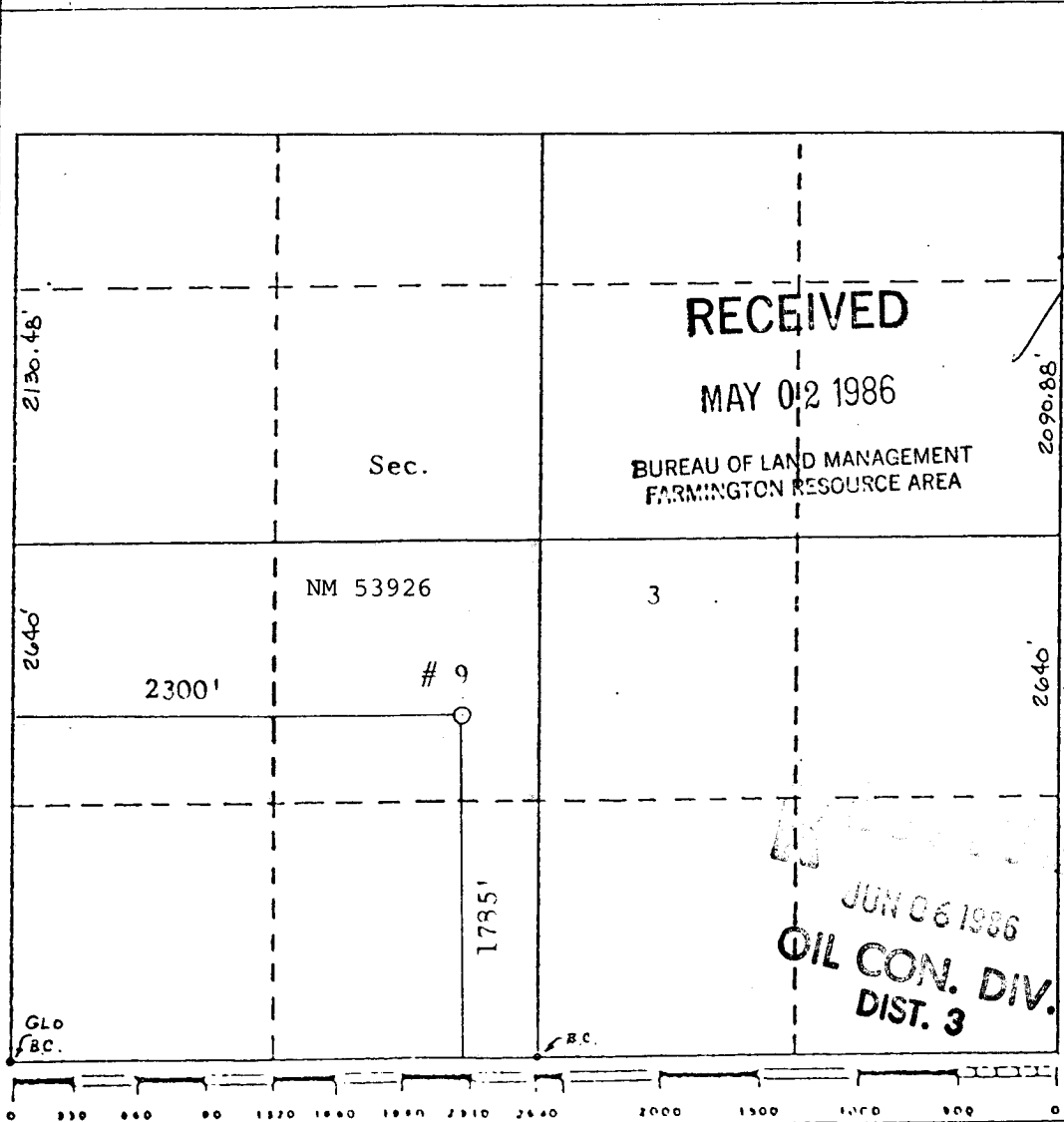
Operator <b>MERRION OIL &amp; GAS CORPORATION</b>		Lense <b>Corrales</b>		Well No. <b>9</b>
Unit Letter <b>K</b>	Section <b>3</b>	Township <b>20 North</b>	Range <b>6 West</b>	County <b>McKinley</b>
Actual Well Location of Well: <b>1785</b> feet from the <b>South</b> line and <b>2300</b> feet from the <b>West</b> line				
Ground Level Elev. <b>6962'</b>	Producing Formation <b>Mesaverde</b>	Pool <b>WC Mesaverde</b>	Dedicated Acreage: <b>40</b> Acres	

- Outline the acreage dedicated to the subject well by colored pencil or hatchure marks on the plat below.
- If more than one lense is dedicated to the well, outline each and identify the ownership thereof (both as to working interest and royalty).
- If more than one lense of different ownership is dedicated to the well, have the interests of all owners been consolidated by communitization, unitization, force-pooling, etc?

Yes  No If answer is "yes," type of consolidation \_\_\_\_\_

If answer is "no," list the owners and tract descriptions which have actually been consolidated. (Use reverse side of this form if necessary.) \_\_\_\_\_

No allowable will be assigned to the well until all interests have been consolidated (by communitization, unitization, forced-pooling, or otherwise) or until a non-standard unit, eliminating such interests, has been approved by the Division.



**CERTIFICATION**

I hereby certify that the information contained herein is true and complete to the best of my knowledge and belief.

*[Signature]*  
Name  
**Steve S. Dunn**  
Position  
**Operations Manager**  
Company  
**Merrion Oil & Gas Corporation**  
Date  
**1/15/86**

I hereby certify that the well location shown on this plat was plotted from field notes of actual surveys made by me or under my supervision, and that the same is true and correct to the best of my knowledge and belief.

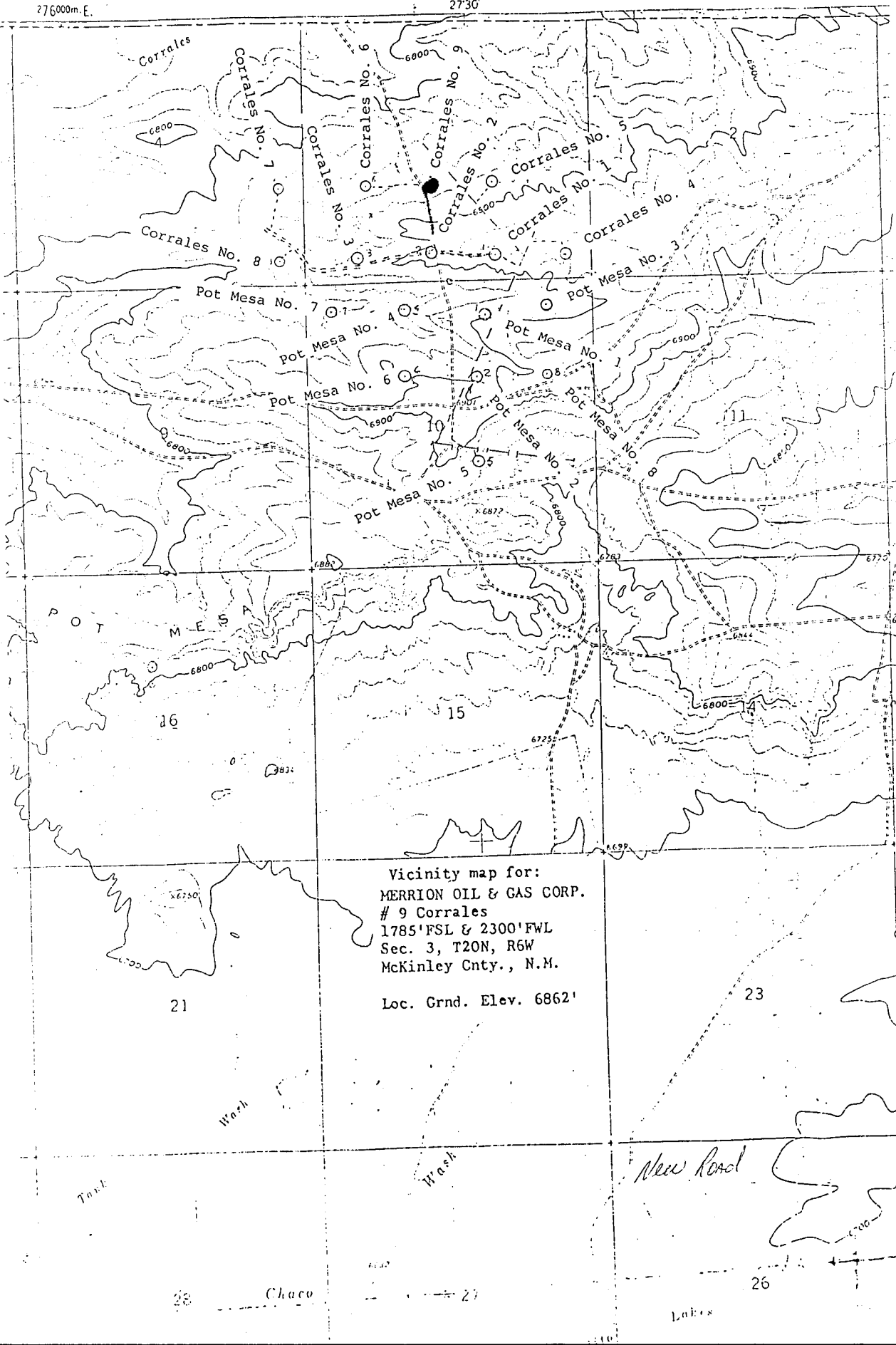
*[Signature]*  
Name  
**ROYA. RUSH**  
Title Surveyed  
**Jan. 11, 1986**  
Registered Professional Land Surveyor  
**8894**

Certificate No. **8894**

ES  
INTERIOR  
SURVEY

276000m. E.

2730'



Vicinity map for:  
MERRION OIL & GAS CORP.  
# 9 Corrales  
1785' FSL & 2300' FWL  
Sec. 3, T20N, R6W  
McKinley Cnty., N.M.

Loc. Grnd. Elev. 6862'

21

23

28

Chaco

27

26

Lakes