

UNITED STATES
DEPARTMENT OF THE INTERIOR
GEOLOGICAL SURVEY

APPLICATION FOR PERMIT TO DRILL, DEEPEN, OR PLUG BACK

1a. TYPE OF WORK

DRILL ☒DEEPEN ☐PLUG BACK ☐

b. TYPE OF WELL

OIL
WELL ☒GAS
WELL ☐

OTHER

SINGLE
ZONE ☒MULTIPLE
ZONE ☐

2. NAME OF OPERATOR

BLACK OIL, INC.

3. ADDRESS OF OPERATOR

P.O. Box 537, Farmington, NM 87499

4. LOCATION OF WELL (Report location clearly and in accordance with any State requirements.)

At surface

990' FSL, 300' FWL

At proposed prod. zone

Same

14. DISTANCE IN MILES AND DIRECTION FROM NEAREST TOWN OR POST OFFICE

25 miles north of Crownpoint, New Mexico

15. DISTANCE FROM PROPOSED*
LOCATION TO NEAREST
PROPERTY OR LEASE LINE, FT.
(Also to nearest drlg. unit line, if any)

330' west

16. NO. OF ACRES IN LEASE

17,269.14 160

18. DISTANCE FROM PROPOSED LOCATION*
TO NEAREST WELL, DRILLING, COMPLETED,
OR APPLIED FOR, ON THIS LEASE, FT.

990'

19. PROPOSED DEPTH

2300'

17. NO. OF ACRES ASSIGNED
TO THIS WELL

40 10 ac.

20. ROTARY OR CABLE TOOLS

Rotary

21. ELEVATIONS (Show ~~vertical~~ ^{horizontal} elevations subject to technical and

6145 GR

procedural review pursuant to 43 CFR 3165.3,

23.

and appeal pursuant to 43 CFR 3165.4,

PROPOSED CASING AND CEMENTING PROGRAM

22. APPROX. DATE WORK WILL START*

March 10, 1987

DRILLING OPERATIONS AUTHORIZED ARE
SUBJECT TO COMPLIANCE WITH ATTACHED

"GENERAL REQUIREMENTS"

SIZE OF HOLE	SIZE OF CASING	WEIGHT PER FOOT	SETTING DEPTH
12-1/4"	8-5/8"	24# J-55	200'
7-7/8"	5-1/2"	17# J-55	2300'

165 Cu.ft. Class B Circ. to Surf.
637 Cu.ft. Class B Circ. to Surf.
1.18 Cu.ft./sack, 100% excess on
surface casing and 60% on prod.
casing, at 1.83 Cu.ft./sack.

Will drill 12-1/4" hole to 200' and set 200' of 8-5/8" 24# J-55 casing, cemented with 165 cu.ft. of Class B cement, circulated to surface. Will drill 7-7/8" hole to 2300' and set 2300' of 5-1/2" 17# J-55 casing and cement with 637 cu.ft. of Class B. cement circulated to surface. Circulating medium will be with clear water, natural mud and water loss control additives. No abnormal pressures or temperatures are anticipated. No gas is present in producing wells nearby. Will run induction and density logs. Blowout preventer schematic is attached; will use a 3000 PSI rated Reagan blatter type annular preventor. A good supply of mud will be on hand to control well as needed.

ESTIMATED TOPS: Surface Formation - Clays and Sand. (Menefee)

Point Lookout - 1060'

Top Mancos - 1200'

Hospah - 2065'

Oil Sand - 2180'

IN ABOVE SPACE DESCRIBE PROPOSED PROGRAM: If proposal is to deepen or plug back, give data on present productive zone and proposed new productive zone. If proposal is to drill or deepen directionally, give pertinent data on subsurface locations and measured and true vertical depths. Give blowout preventer program, if any.

24.

SIGNED



TITLE

President

January 29, 1987

(This space for Federal or State office use)

PERMIT NO.

APPROVAL DATE

APPROVED BY

TITLE

CONDITIONS OF APPROVAL, IF ANY:

APPROVED
AS AMENDED

MAY 20 1987

AREA MANAGER

NMOCC

DIST. 3

*See Instructions On Reverse Side

**NEW MEXICO OIL CONSERVATION COMMISSION
WELL LOCATION AND ACREAGE DEDICATION PLAT**

Form C-102
Supersedes C-128
Effective 1-1-65

All distances must be from the outer boundaries of the Section.

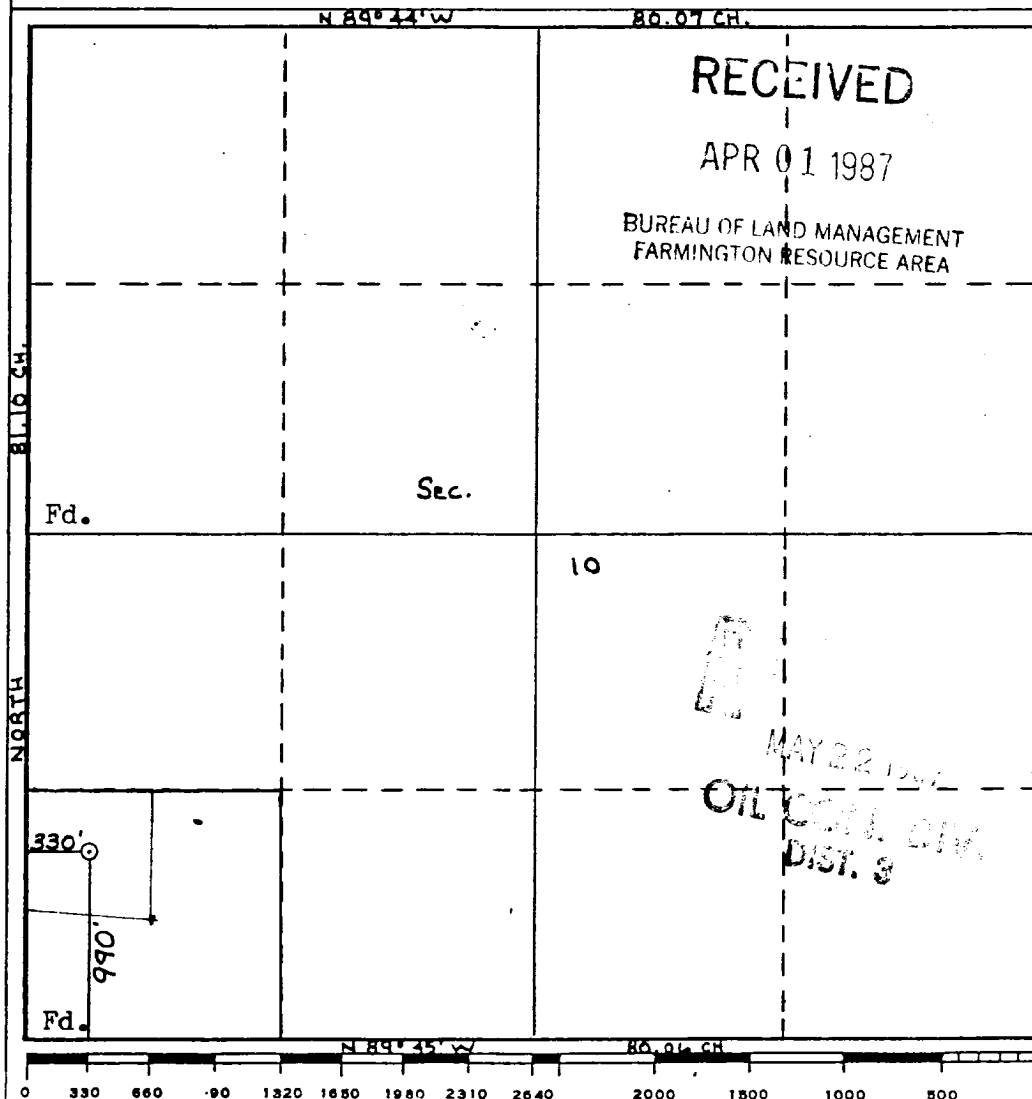
Operator BLACK OIL, INC.			Lease SALAZAR NAVAJO CITO		Well No. 3
Unit Letter M	Section 10	Township 20N	Range 12W	County McKinley	
Actual Footage Location of Well:					
990 feet from the		South	330 feet from the		West
Ground Level Elev. 6145	Producing Formation <i>Hospek</i>	Pool <i>new Rock-EXT</i>		Dedicated Acreage: 40 10 Acres	

1. Outline the acreage dedicated to the subject well by colored pencil or hatchure marks on the plat below.
2. If more than one lease is dedicated to the well, outline each and identify the ownership thereof (both as to working interest and royalty).
3. If more than one lease of different ownership is dedicated to the well, have the interests of all owners been consolidated by communitization, unitization, force-pooling, etc?

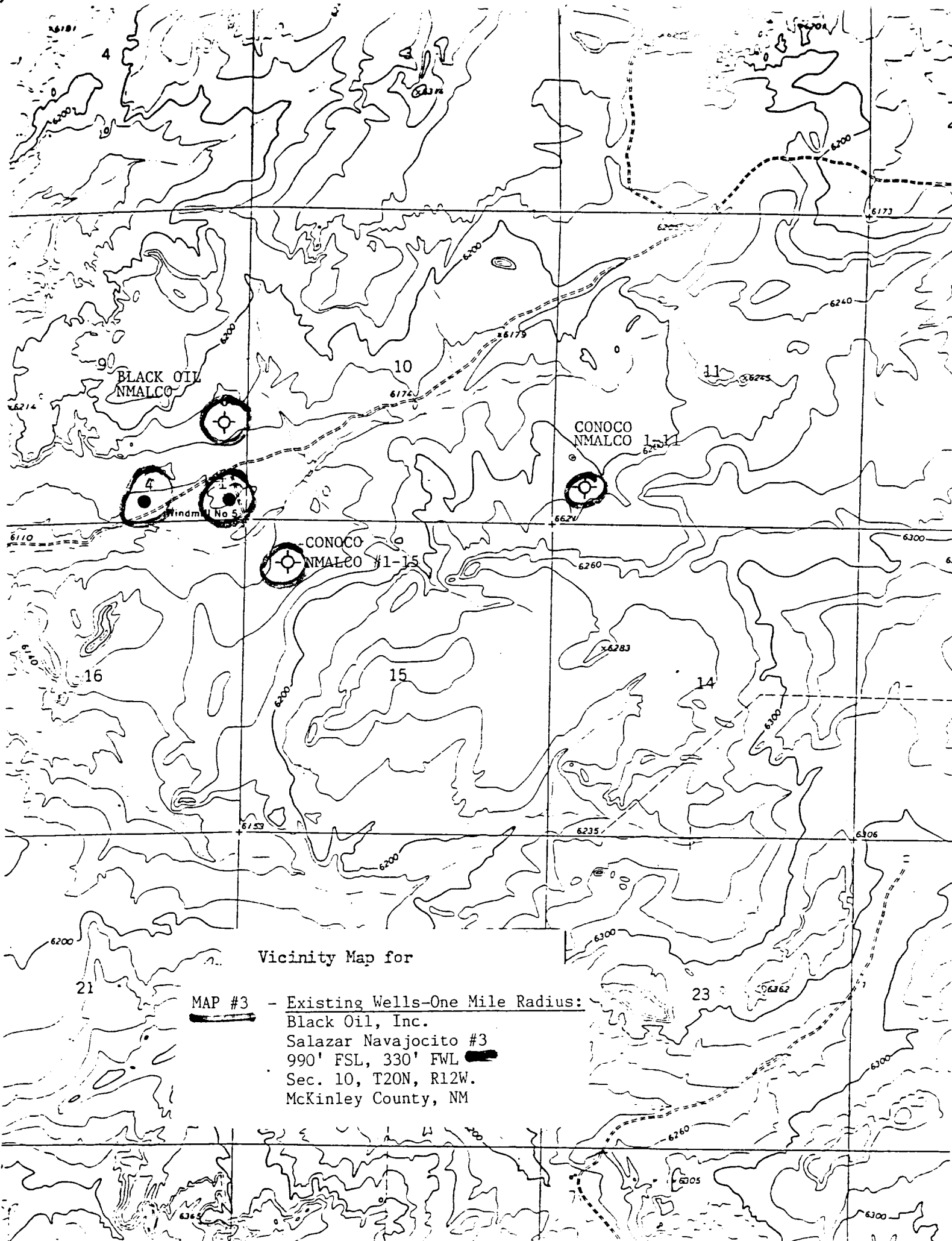
☐ Yes ☐ No If answer is "yes," type of consolidation _____

If answer is "no," list the owners and tract descriptions which have actually been consolidated. (Use reverse side of this form if necessary.) _____

No allowable will be assigned to the well until all interests have been consolidated (by communitization, unitization, forced-pooling, or otherwise) or until a non-standard unit, eliminating such interests, has been approved by the Commission.



CERTIFICATION	
I hereby certify that the information contained herein is true and complete to the best of my knowledge and belief.	
Name	Bruce A. Black
Position	President
Company	Black Oil, Inc.
Date	January 25, 1987
I hereby certify that the well location shown on this plat was plotted from field notes of actual surveys made by me or under my supervision, and that the same is true and correct to the best of my knowledge and belief.	
Date Surveyed	2-15-87
William E. Mahnkett Registered Professional Engineer and/or Land Surveyor No. 8466	
Certificate No. 8100 PROFESSIONAL LAND SURVEYOR	



Vicinity Map for

MAP #3 - Existing Wells-One Mile Radius:
Black Oil, Inc.
Salazar Navajocito #3
990' FSL, 330' FWL
Sec. 10, T20N, R12W.
McKinley County, NM