

NO. OF COPIES RECEIVED	
DISTRIBUTION	
SANTA FE	
FILE	
U.S.G.S.	
LAND OFFICE	
OPERATOR	

NEW MEXICO OIL CONSERVATION COMMISSION

Form C-101
Revised 1-1-65

5A. Indicate Type of Lease
STATE ☐ FEE ☒

5. State Oil & Gas Lease No.

APPLICATION FOR PERMIT TO DRILL, DEEPEN, OR PLUG BACK

1a. Type of Work b. Type of Well OIL WELL <input checked="" type="checkbox"/> GAS WELL <input type="checkbox"/> OTHER <input type="checkbox"/> 2. Name of Operator Black Oil, Inc. 3. Address of Operator P.O. Box 537, Farmington, NM 87499 4. Location of Well UNIT LETTER <u>A</u> LOCATED <u>990</u> FEET FROM THE <u>North</u> LINE AND <u>330</u> FEET FROM THE <u>East</u> LINE OF SEC. <u>16</u> TWP. <u>20N</u> RGE. <u>12W</u> NMPM 11. Elevations (Show whether DE, RT, etc.) 6138 GL 21A. Kind & Status Plug. Bond Blanket 21B. Drilling Contractor Salazar 22. Approx. Date Work will start April 1, 1988		7. Unit Agreement Name 8. Farm or Lease Name State Cookie 9. Well No. 3 10. Field and Pool, or Wildcat Nose Rock-Hospah Ext. 12. County McKinley 19. Proposed Depth 2300 19A. Formation Hospah 20. Rotary or C.T. Rotary	
---	--	--	--

PROPOSED CASING AND CEMENT PROGRAM

SIZE OF HOLE	SIZE OF CASING	WEIGHT PER FOOT	SETTING DEPTH	SACKS OF CEMENT	EST. TOP
12-1/4"	8-5/8"	24#	100'	75 sks 88 cu.ft.	Surface
7-7/8"	5-1/2"	15.5#/Ft.	2300'	325 sks 65/35 P02 plus 75 sks. Cl. "B" Neat. 485 cu.ft.	

We propose to drill a 12-1/4" hole to 100' and set 100' of 8-5/8" 24# surface casing.
We will cement to surface with 75 sacks (88 cu.ft.) class B neat cement. We will then drill a 7-7/8" hole to 2300' and run open hole logs. In the event oil sands are found, we will run 5-1/2" 15.5# casing and cement to surface with 325 sks. 65/35 light cement (595 cu.ft.) and 75 sks class B neat cement (88.5 cu.ft.)

APPROVAL EXPIRES 9-7-88
UNLESS DRILLING IS COMMENCED.
SPUD NOTICE MUST BE SUBMITTED
WITHIN 10 DAYS.

IN ABOVE SPACE DESCRIBE PROPOSED PROGRAM; IF PROPOSAL IS TO DEEPEN OR PLUG BACK, GIVE DATA ON PRESENT PRODUCTIVE ZONE AND PROPOSED NEW PRODUCTIVE ZONE. GIVE BLOWOUT PREVENTER PROGRAM, IF ANY.

I hereby certify that the information above is true and complete to the best of my knowledge and belief.

Signed [Signature] Title President Date 2/26/88

(This space for State Use)

APPROVED BY [Signature] TITLE DEPUTY OIL & GAS INSPECTOR, DIST. #3 DATE MAR 07 1988
CONDITIONS OF APPROVAL, IF ANY:

NEW MEXICO OIL CONSERVATION COMMISSION
WELL LOCATION AND ACREAGE DEDICATION PLAT

Form 1-10,
Supersedes 1-128
Effective 1-1-55

All distances must be from the outer boundaries of the Section

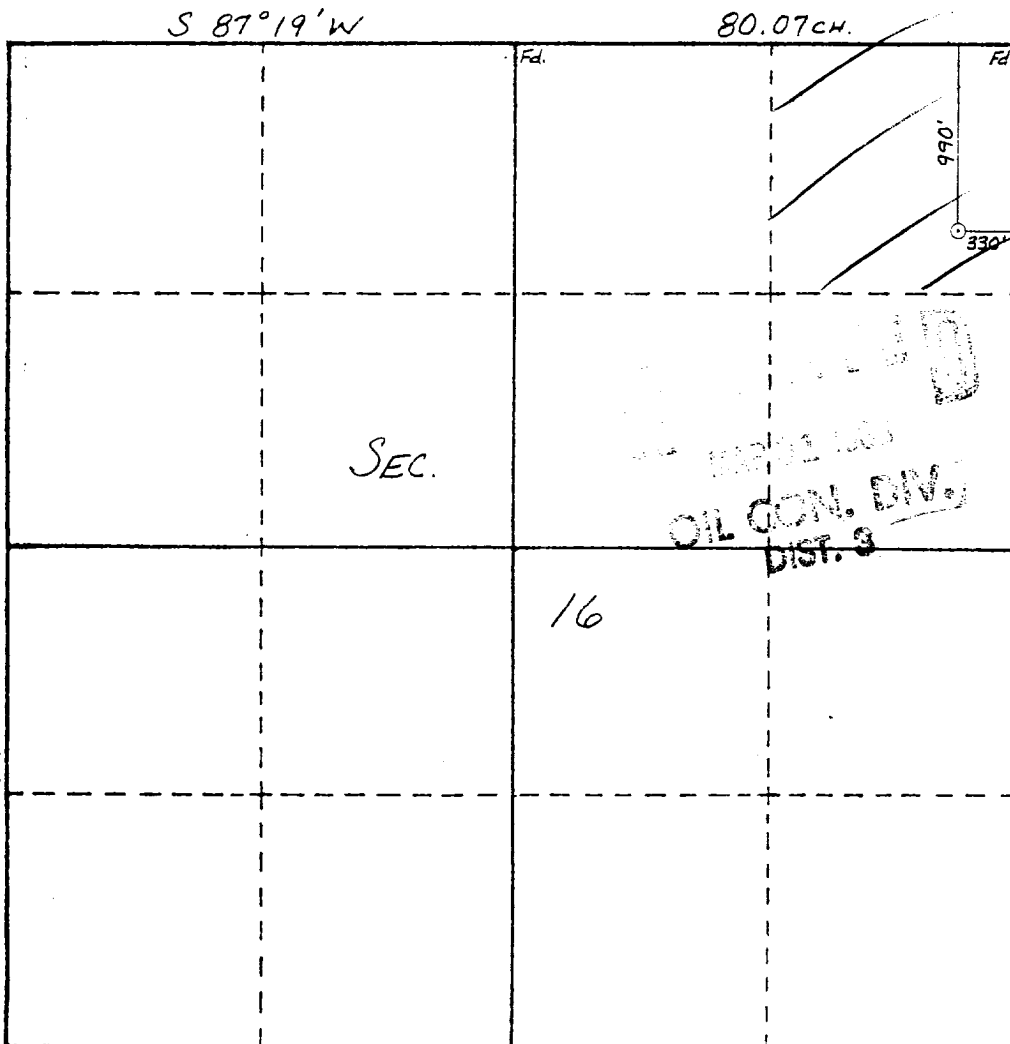
Operator BLACK OIL, INC.			Lease STATE <i>COOKIE</i>		Well No. 3 COOKIE
Unit Letter A	Section 16	Township 20 N	Range 12 W	County MCKINLEY	
Actual Footage Location of Well: 990 feet from the North line and 330 feet from the East line					
Ground Level Elev. 6138	Producing Formation Hospah		Pool Nose Rock - Hospah Ext.		Dedicated Acreage: 40 Acres

1. Outline the acreage dedicated to the subject well by colored pencil or hachure marks on the plat below.
2. If more than one lease is dedicated to the well, outline each and identify the ownership thereof (both as to working interest and royalty).
3. If more than one lease of different ownership is dedicated to the well, have the interests of all owners been consolidated by communitization, unitization, force-pooling, etc?

☐ Yes ☐ No If answer is "yes," type of consolidation _____

If answer is "no," list the owners and tract descriptions which have actually been consolidated. (Use reverse side of this form if necessary.) _____

No allowable will be assigned to the well until all interests have been consolidated (by communitization, unitization, forced-pooling, or otherwise) or until a non-standard unit, eliminating such interests, has been approved by the Commission.



CERTIFICATION

I hereby certify that the information contained herein is true and complete to the best of my knowledge and belief.

Bruce A. Black

Name **Bruce A. Black**

Position **President**

Company **Black Oil, Inc.**

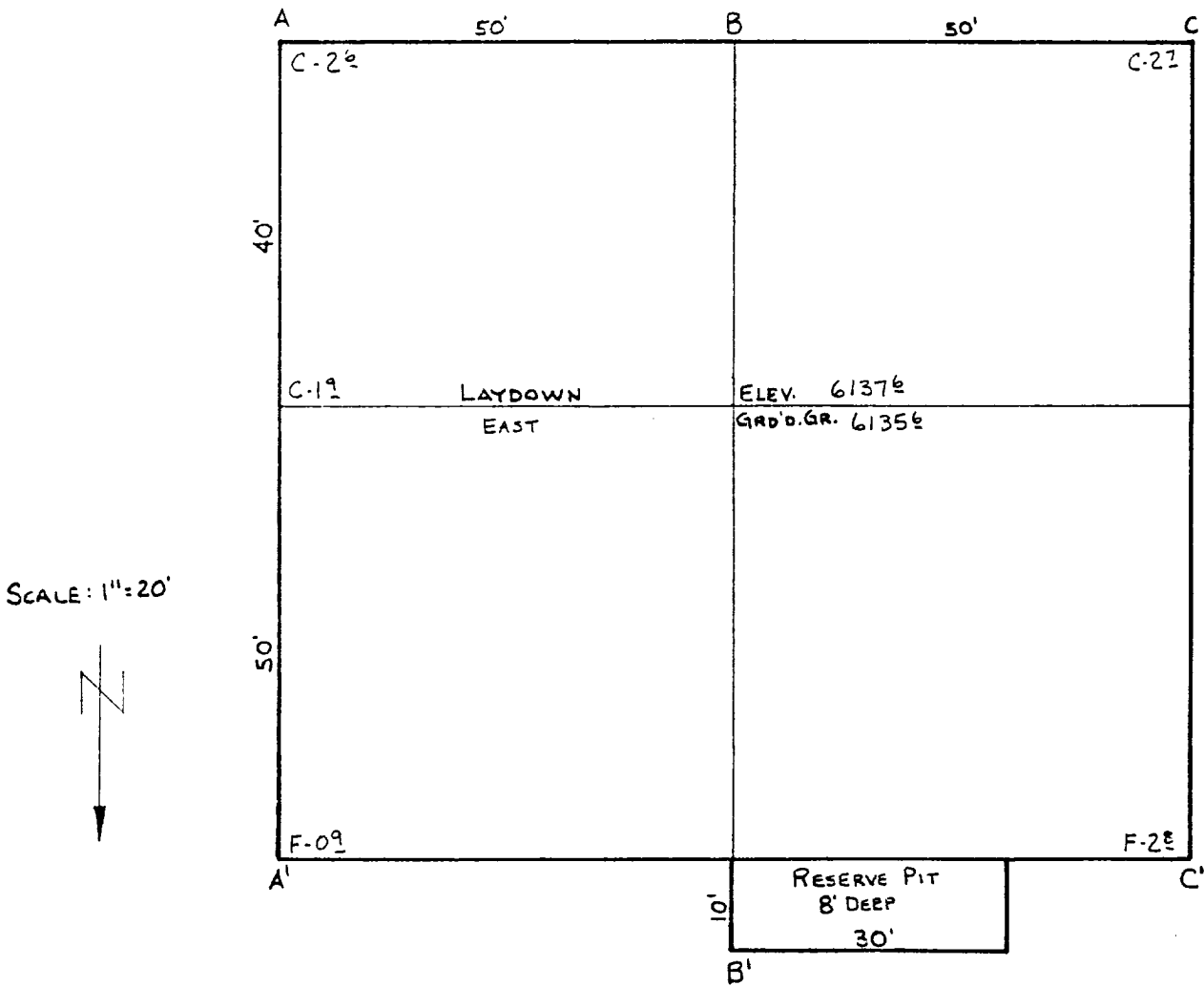
Date **2/26/88**

I hereby certify that the well location shown on this plat was plotted from field notes of actual surveys made by me or under my supervision, and that the same is true and correct to the best of my knowledge and belief.

Date Surveyed **2/23/88**
William W. Matlock
Registered Professional Engineer
and Land Surveyor **8466**

Certificate No. _____

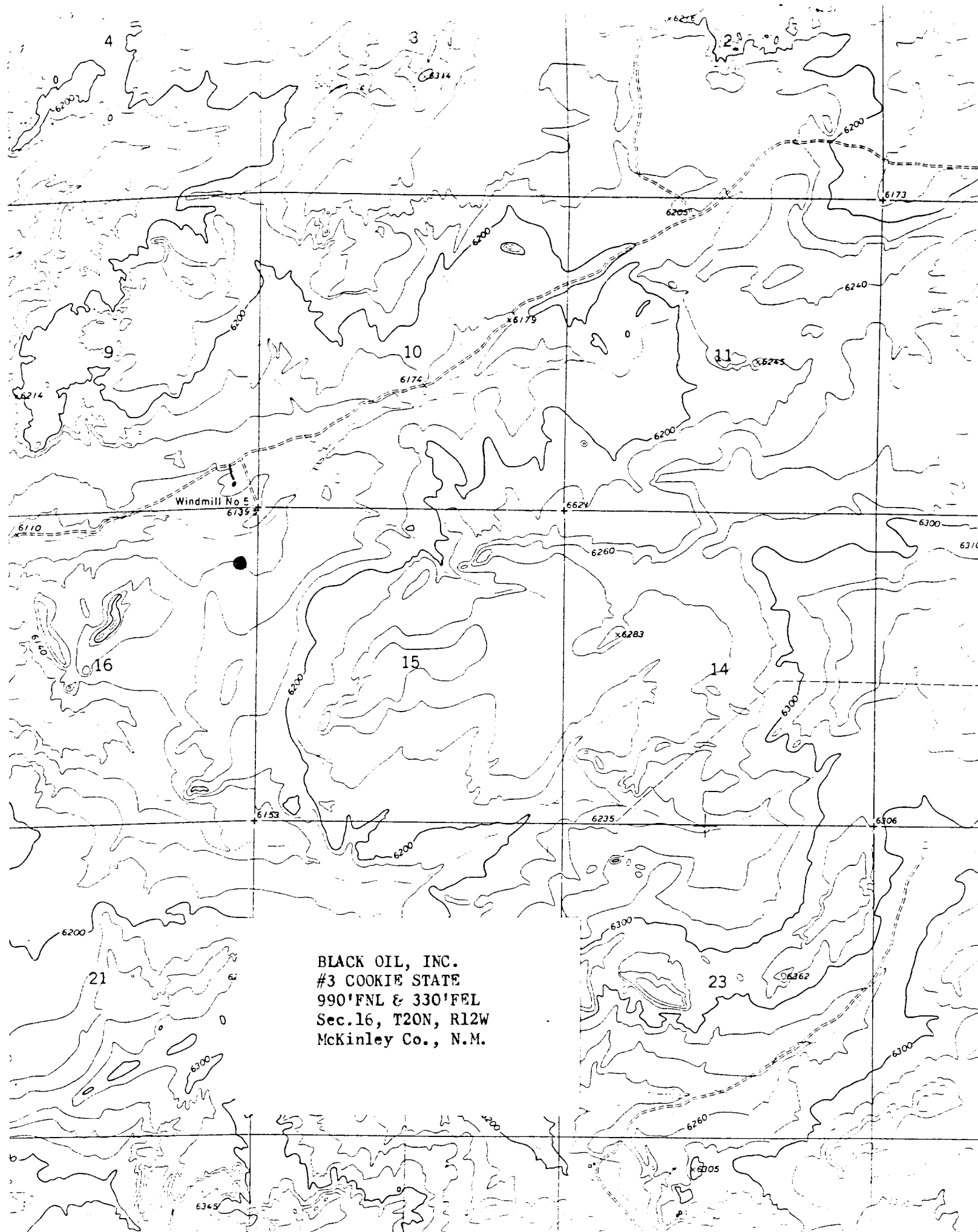
BLACK OIL, INC.
 #3 COOKIE STATE
 990' FNL & 330' FSL
 Sec. 16, T20N, R12W
 McKinley Co., N.M.



A-A'	Vert.: 1" = 30'	Horiz.: 1" = 100'	C/L
6140			
6130			

B-B'
6140
6130

C-C'
6140
6130



BLACK OIL, INC.
#3 COOKIE STATE
990'FNL & 330'FEL
Sec.16, T20N, R12W
McKinley Co., N.M.