

UNITED STATES
DEPARTMENT OF THE INTERIOR
GEOLOGICAL SURVEY

30-039-21907

APPLICATION FOR PERMIT TO DRILL, DEEPEN, OR PLUG BACK

1a. TYPE OF WORK

DRILL ☒DEEPEN ☐PLUG BACK ☐

b. TYPE OF WELL

OIL
WELL ☐GAS
WELL ☒

OTHER

SINGLE
ZONE ☒MULTIPLE
ZONE ☐

2. NAME OF OPERATOR

JACK A. Cole

3. ADDRESS OF OPERATOR

P. O. Box 191, Farmington, New Mexico 87401

4. LOCATION OF WELL (Report location clearly and in accordance with any State requirements.)*

At surface

990/N and 1850/W Sec. 17-T23N-R3W

At proposed prod. zone

Same

14. DISTANCE IN MILES AND DIRECTION FROM NEAREST TOWN OR POST OFFICE*

30 Miles NW Cuba, New Mexico

10. DISTANCE FROM PROPOSED*

LOCATION TO NEAREST
PROPERTY OR LEASE LINE, FT.

990

(Also to nearest drlg. unit line, if any)
18. DISTANCE FROM PROPOSED LOCATION*
TO NEAREST WELL, DRILLING, COMPLETED,
OR APPLIED FOR, ON THIS LEASE, FT.

3000'

16. NO. OF ACRES IN LEASE

1680

17. NO. OF ACRES ASSIGNED

TO THIS WELL
160

19. PROPOSED DEPTH

3500

20. ROTARY OR CABLE TOOL

Rotary

21. ELEVATIONS (Show whether DF, RT, GR, etc.)

7353 Gr.

22. APPROX. DATE WORK WILL START*

November 15, 1978

23.

PROPOSED CASING AND CEMENTING PROGRAM

SIZE OF HOLE	SIZE OF CASING	WEIGHT PER FOOT	SETTING DEPTH	QUANTITY OF CEMENT
12 1/4	8 5/8	24.0	130'	Circulate
7 7/8	4 1/2	10.5	3500'	150

Well will be mud drilled with rotary tools after setting and cementing 8 5/8" surface casing. Run electric logs at total depth and set 4 1/2" casing if warranted, cementing same with 150 sacks. Sand-water frac treat through casing perforations opposite PC sand. Run 1 1/4" tubing for production string to produce as PC natural gas well. Reserve pit will be fenced on 3 sides before spudding and fourth side when drilling operations cease.

gas is dedicated

IN ABOVE SPACE DESCRIBE PROPOSED PROGRAM: If proposal is to deepen or plug back, give data on present productive zone and proposed new productive zone. If proposal is to drill or deepen directionally, give pertinent data on subsurface locations and measured true vertical depths. Give blowout preventer program, if any.

24.

SIGNED

Jack A. Cole

TITLE

Operator

(This space for Federal or State office use)

PERMIT NO.

APPROVAL DATE

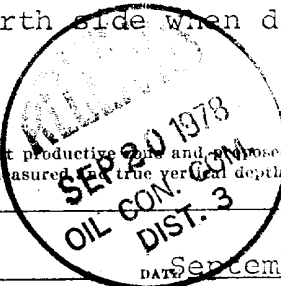
APPROVED BY

TITLE

CONDITIONS OF APPROVAL, IF ANY:

ok Frank

*See Instructions On Reverse Side



DATE September 15, 1978

RECEIVED

SEP 19 1978

U. S. GEOLOGICAL SURVEY

NEW MEXICO OIL CONSERVATION COMMISSION
WELL LOCATION AND ACREAGE DEDICATION PLAT

Form O-102
Supersedes O-12
Effective 4-1-65

All distances must be from the outer boundaries of the Section.

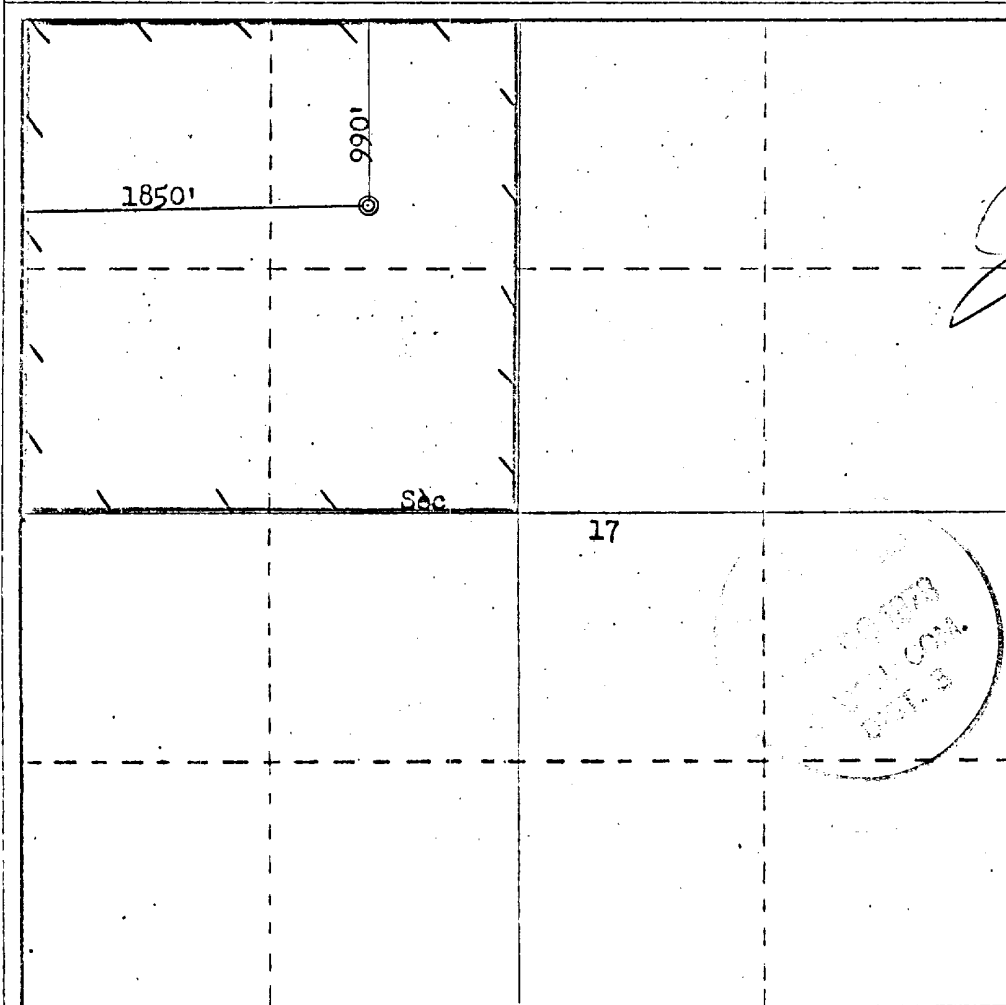
Operator JACK A. COLE			Lease APACHE HILLS		Well No. 6
Unit Letter C	Section 17	Township 23N	Range 3W	County Rio Arriba	
Actual Footage Location of Well:					
990 feet from the North line and		1850 feet from the West line			
Ground Level Elev. 7353	Producing Formation Pictured Cliffs	Pool Ballard	Dedicated Acreage 160		

1. Outline the acreage dedicated to the subject well by colored pencil or hachure marks on the plat below.
2. If more than one lease is dedicated to the well, outline each and identify the ownership thereof (both as to working interest and royalty).
3. If more than one lease of different ownership is dedicated to the well, have the interests of all owners consolidated by communitization, unitization, force-pooling, etc?

☐ Yes ☐ No If answer is "yes," type of consolidation _____

If answer is "no," list the owners and tract descriptions which have actually been consolidated. (Use reverse side of this form if necessary.) _____

No allowable will be assigned to the well until all interests have been consolidated (by communitization, unitization, forced-pooling, or otherwise) or until a non-standard unit, eliminating such interests, has been approved by the Commission.



CERTIFICATION

I hereby certify that the information contained herein is true and complete to the best of my knowledge and belief.

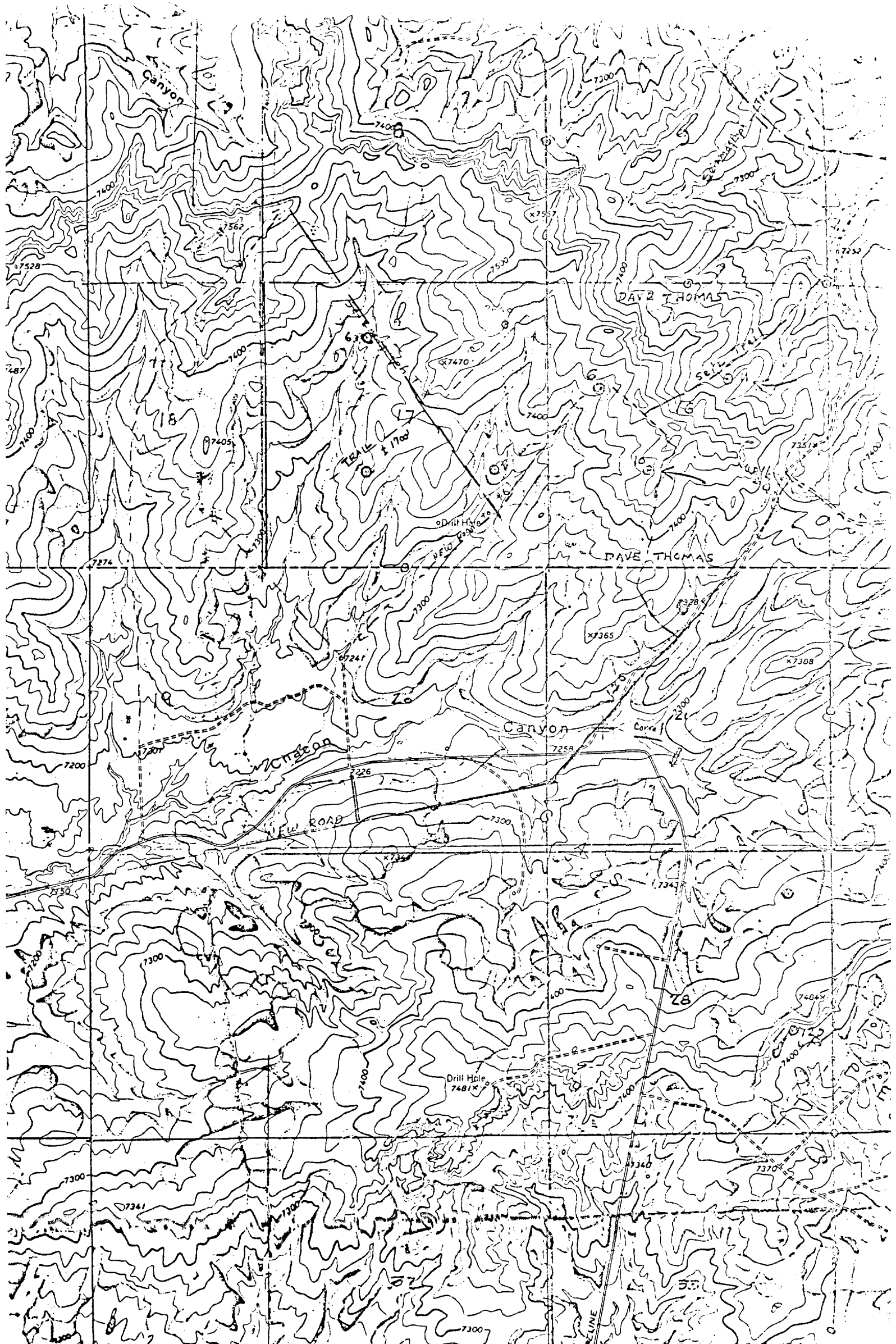
Jack A. Cole
Operator
Position

Company
Date **September 15, 1978**

I hereby certify that the well location shown on this plat was plotted from field notes of actual surveys made by me or under my supervision, and that the same is true and correct to the best of my knowledge and belief.

Date Surveyed
September 15, 1978
by *Fred B. Kerra*
and or *John B. Kerra*
Fred B. Kerra
Certified **3950**
B. KERR, JR.

0 330 660 990 1320 1650 1980 2310 2640 2970 3300 3630 3960 4290 4620 4950 5280 5610 5940 6270 6600



Vicinity Map for
JACK A. COLE #6 APACHE HILLS
990' FNL 1850' FNL Sec 17-T23N-R3W
RIO ARIZONA COUNTY, NEW MEXICO