

UNITED STATES
DEPARTMENT OF THE INTERIOR
GEOLOGICAL SURVEY

APPLICATION FOR PERMIT TO DRILL, DEEPEN, OR PLUG BACK

1a. TYPE OF WORK

DRILL ☒DEEPEN ☐PLUG BACK ☐

b. TYPE OF WELL

OIL
WELL ☒GAS
WELL ☐OTHER ☐SINGLE
ZONE ☐MULTIPLE
ZONE ☐

2. NAME OF OPERATOR

ODESSA NATURAL CORPORATION Attn: John Strojek

3. ADDRESS OF OPERATOR

P.O. Box 3908 Odessa, Texas 79760

4. LOCATION OF WELL (Report location clearly and in accordance with any State requirements.)

At surface

790' FNL, 1850' FEL

At proposed prod. zone

Same

14. DISTANCE IN MILES AND DIRECTION FROM NEAREST TOWN OR POST OFFICE*

Not Applicable

15. DISTANCE FROM PROPOSED*

LOCATION TO NEAREST
PROPERTY OR LEASE LINE, FT.
(Also to nearest drlg. unit line, if any)

790'

16. NO. OF ACRES IN LEASE

--

17. NO. OF ACRES ASSIGNED
TO THIS WELL

160

18. DISTANCE FROM PROPOSED LOCATION*
TO NEAREST WELL, DRILLING, COMPLETED,
OR APPLIED FOR, ON THIS LEASE, FT.

2650'

19. PROPOSED DEPTH

7650'

20. ROTARY OR CABLE TOOLS

Rotary

21. ELEVATIONS (Show whether DF, RT, GR, etc.)

7302' GR, 7315' D.F., 7316' KB

22. APPROX. DATE WORK WILL START*

2/15/79

23.

PROPOSED CASING AND CEMENTING PROGRAM

SIZE OF HOLE	SIZE OF CASING	WEIGHT PER FOOT	SETTING DEPTH	QUANTITY OF CEMENT
12-1/4"	8-5/8"	24.0	250'	250 sacks
7-7/8"	4-1/2"	10.50&11.60	76.50'	To be determined

It is proposed to drill this well with rotary tools, using oil base mud as circulation medium, through the Dakota Formation. Possible productibe zones in the Dakota Formation will be completed. Production casing will be cemented in such a manner as to protect the Pictured Cliffs Formation.

Estimated Formation Tops

Pictured Cliffs	3052'	Green Horn	7175'
Cliff House	4622'	Graneros	7236'
Gallup	6174'	Dakota	7256'

The NE/4 Section 15 is dedicated to this well.

The Natural Gas produced from this well is committed.

IN ABOVE SPACE DESCRIBE PROPOSED PROGRAM: If proposal is to deepen or plug back, give data on present productive zone and proposed new productive zone. If proposal is to drill or deepen directionally, give pertinent data on subsurface locations and measured and true vertical depths. Give blowout preventer program, if any.

24. FOR: ODESSA NATURAL CORPORATION

President, Walsh Engin.
& Prod. Corp.

SIGNED

Ewell N. Walsh, P.E.

TITLE

DATE

1/3/79

(This space for Federal or State office use)

PERMIT NO.

APPROVAL DATE

APPROVED BY

TITLE

CONDITIONS OF APPROVAL, IF ANY:

ok Ench

RECEIVED

JAN 5 1979

*See Instructions On Reverse Side

U.S. GEOLOGICAL SURVEY
DURANGO, COLO.

**NEW MEXICO OIL CONSERVATION COMMISSION
WELL LOCATION AND ACREAGE DEDICATION PLAT**

Form O-117
Superseded O-117
1-10-75

All distances must be from the outer boundaries of the section.

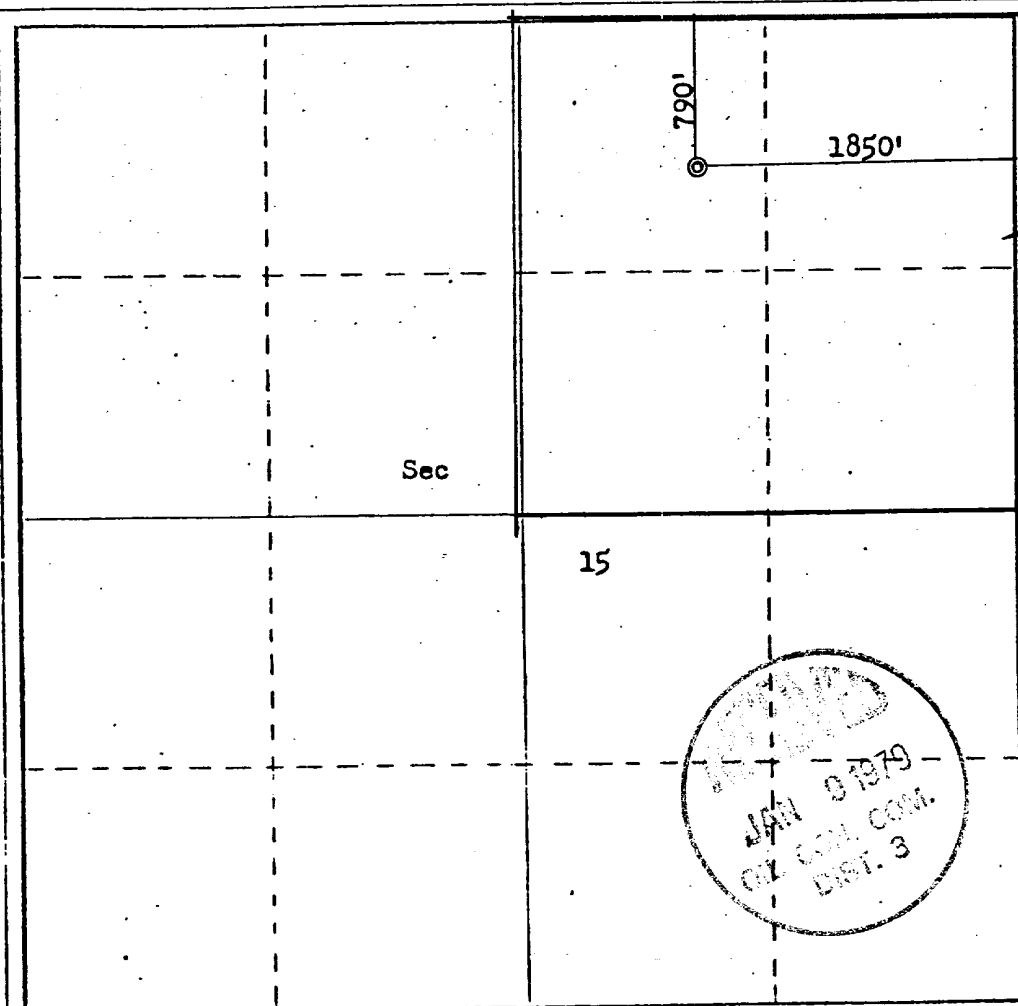
Operator ODESSA NATURAL CORPORATION			Lease CHACON-JICARILLA "D"		Well No. 14
Unit Letter B	Section 15	Township 23N	Range 3W	County Rio Arriba	
Actual Footage Location of Well:					
790	feet from the	North	line and	1850	feet from the East line
Ground Level Elev. 7302	Producing Formation Dakota		Pool Chacon Dakota Associated	Dedicated Acreage 160	Acres

1. Outline the acreage dedicated to the subject well by colored pencil or hatchure marks on the plat below.
2. If more than one lease is dedicated to the well, outline each and identify the ownership thereof (both as to working interest and royalty).
3. If more than one lease of different ownership is dedicated to the well, have the interests of all owners been consolidated by communitization, unitization, force-pooling, etc?

☐ Yes ☐ No If answer is "yes," type of consolidation _____

If answer is "no," list the owners and tract descriptions which have actually been consolidated. (Use reverse side of this form if necessary.) _____

No allowable will be assigned to the well until all interests have been consolidated (by communitization, unitization, forced-pooling, or otherwise) or until a non-standard unit, eliminating such interests, has been approved by the Commission.



CERTIFICATION

I hereby certify that the information contained herein is true and complete to the best of my knowledge and belief.

FOR: ODESSA NATURAL CORP.

Name
Ewell N. Walsh, President

Position
Walsh Engin. & Prod. Corp.

Company

Date
1/3/79

I hereby certify that the well location shown on this plat was plotted from field notes of actual surveys made by me or under my supervision, and that the same is true and correct to the best of my knowledge and belief.

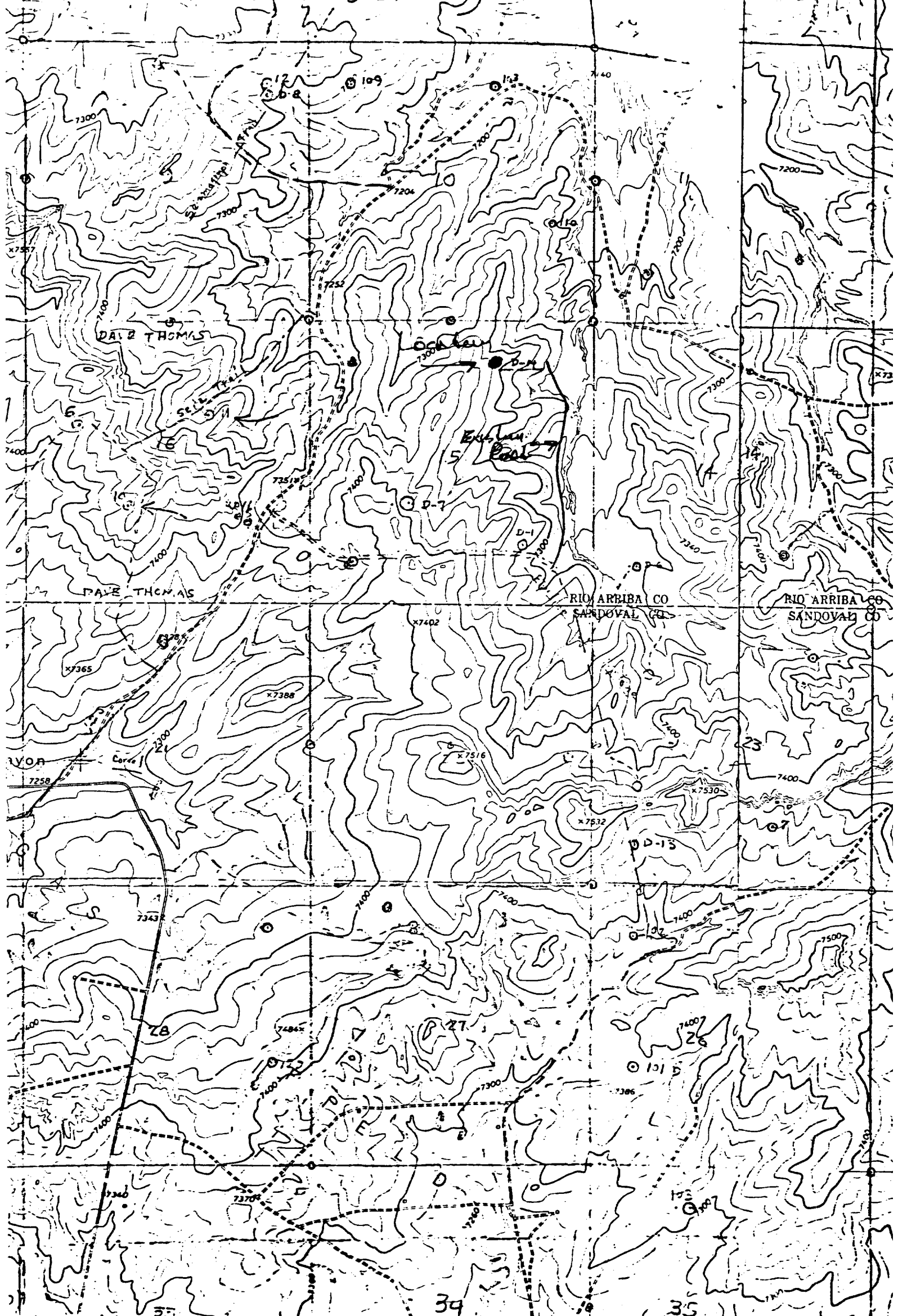
Date Surveyed

December 14, 1978

Registered Professional Land Surveyor
and or L.S. Surveyor
Fred B. Kerr, Jr.

Certified by **FRED B. KERR, JR.**
3950

0 320 640 960 1280 1600 1920 2240 2560 2880 3200 3520 3840 4160 4480 4800 5120 5440 5760 6080 6400



Vicinity Map for
ODESSA NATURAL CORPORATION #11 CHACON-JICARILLA "D"
790'FNL 1850'FEL Sec 15-T23N-R3W
RIO ARRIBA COUNTY, NEW MEXICO