

UNITED STATES  
DEPARTMENT OF THE INTERIOR  
GEOLOGICAL SURVEY

## APPLICATION FOR PERMIT TO DRILL, DEEPEN, OR PLUG BACK

1a. TYPE OF WORK

DRILL ☒DEEPEN ☐PLUG BACK ☐

b. TYPE OF WELL

OIL  
WELL ☒GAS  
WELL ☐OTHER ☐SINGLE  
ZONE ☒MULTIPLE  
ZONE ☐

2. NAME OF OPERATOR

Jerome P. McHugh

3. ADDRESS OF OPERATOR

P O Box 208, Farmington, NM 87401

4. LOCATION OF WELL (Report location clearly and in accordance with any State requirements.)

At surface

1780' FSL - 980' FWL

At proposed prod. zone

14. DISTANCE IN MILES AND DIRECTION FROM NEAREST TOWN OR POST OFFICE\*

3/4 mile NE of Counselor, NM

15. DISTANCE FROM PROPOSED\*

LOCATION TO NEAREST  
PROPERTY OR LEASE LINE, FT.  
(Also to nearest drg. unit line, if any)

860'

16. NO. OF ACRES IN LEASE

320

17. NO. OF ACRES ASSIGNED  
TO THIS WELL

40

18. DISTANCE FROM PROPOSED LOCATION\*

TO NEAREST WELL, DRILLING, COMPLETED,  
OR APPLIED FOR, ON THIS LEASE, FT.

2 miles

19. PROPOSED DEPTH

5700'

20. ROTARY OR CABLE TOOLS

Rotary

21. ELEVATIONS (Show whether DF, RT, GR, etc.)

6840'

22. APPROX. DATE WORK WILL START\*

ASAP

23.

## PROPOSED CASING AND CEMENTING PROGRAM

SIZE OF HOLE	SIZE OF CASING	WEIGHT PER FOOT	SETTING DEPTH	QUANTITY OF CEMENT
12 1/4"	8-5/8"	24#	200' <del>200' 300'</del>	135 sx to surface
7-7/8"	4 1/2"	10.5#	5700'	1600 cu.ft. slurry in 2 stages

Plan to drill with spud mud to 200' to set 8-5/8" surface casing.  
Will then drill a 7-7/8" hole to 5700' to test the Gallup Formation.  
Will be using a gel-mud-water mixture for drilling to T.D. Will run  
IES and CDL logs; if it appears productive, will run 4 1/2" casing, perforate,  
frac, clean out after frac and complete well.

GAS NOT DEDICATED.

IN ABOVE SPACE DESCRIBE PROPOSED PROGRAM: If proposal is to deepen or plug back, give data on present productive zone and proposed new productive zone. If proposal is to drill or deepen directionally, give pertinent data on subsurface locations and measured and true vertical depths. Give blowout preventer program, if any.

24.

SIGNED

Jerry McHugh

TITLE

Agent

DATE

3-22-82

(This space for Federal or State office use)

PERMIT NO.

APPROVAL DATE

APPROVED BY

TITLE

CONDITIONS OF APPROVAL, IF ANY:

APPROVED  
AS AMENDED

APR 20 1982

JAMES F. SIMS  
DISTRICT ENGINEER

## OIL CONSERVATION DIVISION

STATE OF NEW MEXICO  
ENERGY AND MINERALS DEPARTMENT

P. O. BOX 2088

SANTA FE, NEW MEXICO 87501

Form C-102  
Revised 10-1-78

All distances must be from the outer boundaries of the Section.

Operator Jerome P. McHugh		Lease Gallo Red		Well No. 1
Unit Letter L	Section 14	Township 23 North	Range 6 West	County Rio Arriba
Actual Footage Location of Well:				
1780	feet from the	South	line and	980
				feet from the
				West
Ground Level Elev. 6840	Producing Formation Gallup	Pool Undesignated Gallup	Dedicated Acreage: 40 Acres	

1. Outline the acreage dedicated to the subject well by colored pencil or hachure marks on the plat below.
2. If more than one lease is dedicated to the well, outline each and identify the ownership thereof (both as to working interest and royalty).
3. If more than one lease of different ownership is dedicated to the well, have the interests of all owners been consolidated by communitization, unitization, force-pooling, etc?

☐ Yes ☐ No If answer is "yes," type of consolidation \_\_\_\_\_

If answer is "no," list the owners and tract descriptions which have actually been consolidated. (Use reverse side of this form if necessary.) \_\_\_\_\_

No allowable will be assigned to the well until all interests have been consolidated (by communitization, unitization, forced-pooling, or otherwise) or until a non-standard unit, eliminating such interests, has been approved by the Division.

## CERTIFICATION

I hereby certify that the information contained herein is true and complete to the best of my knowledge and belief.

Name  
Jerome McHugh

Position  
Agent

Company  
Dugan Production Corp.

Date  
3-22-82

I hereby certify that the location shown on this plat was plotted from field notes of actual survey made by me or under my supervision, and that the same is correct to the best of my knowledge and belief.

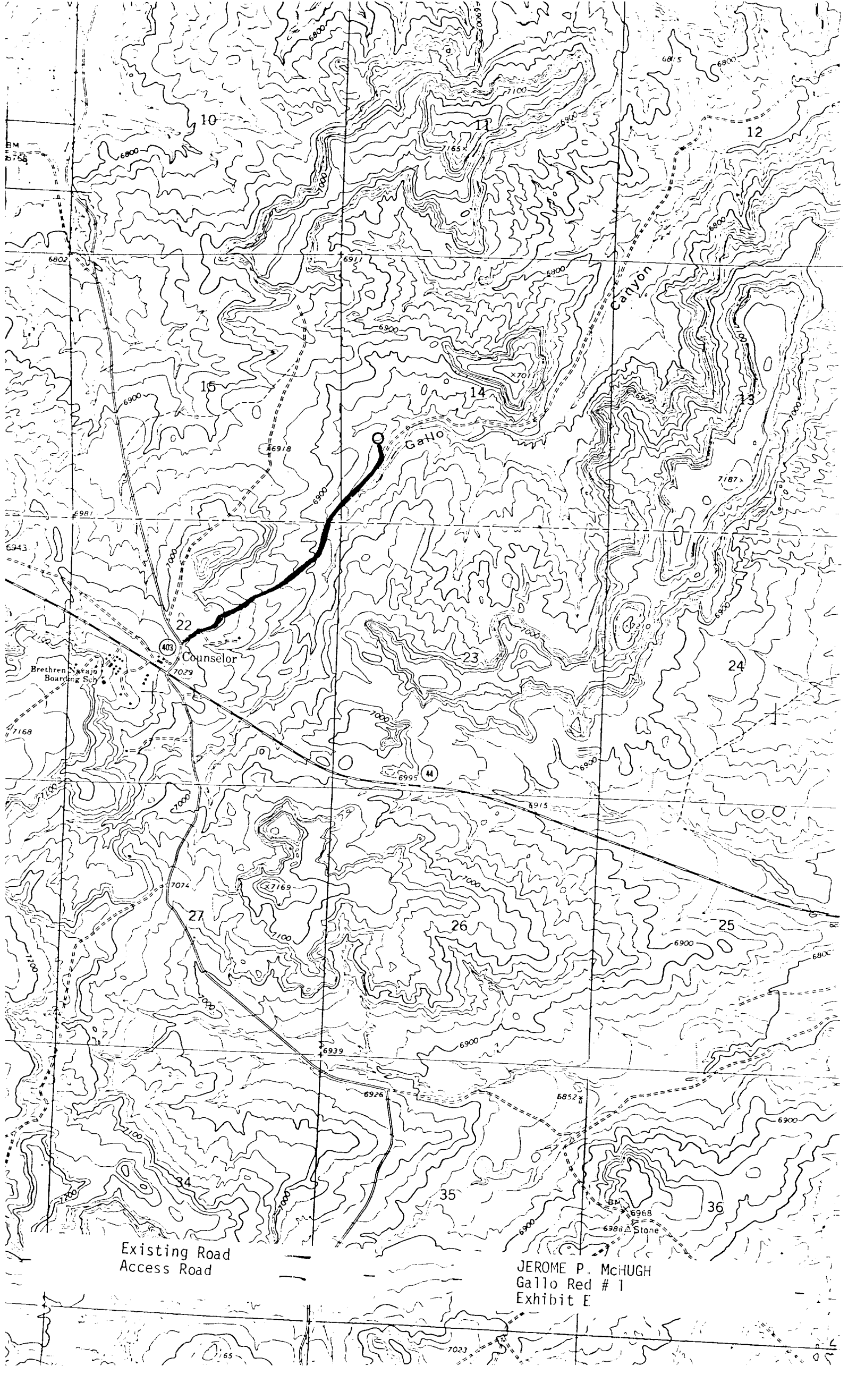
Date Surveyed  
March 2, 1982

Registered Professional Engineer  
and/or Land Surveyor

Edgar L. Risenhoover

Certificate No. 5979

Edgar L. Risenhoover, L.S.



Existing Road  
Access Road

JEROME P. McHUGH  
Gallo Red # 1  
Exhibit E