

UNITED STATES  
DEPARTMENT OF THE INTERIOR  
GEOLOGICAL SURVEY

## APPLICATION FOR PERMIT TO DRILL, DEEPEN, OR PLUG BACK

## 1a. TYPE OF WORK

DRILL ☒DEEPEN ☐PLUG BACK ☐

## b. TYPE OF WELL

OIL  
WELL ☒GAS  
WELL ☐

OTHER

SINGLE  
ZONE ☐MULTIPLE  
ZONE ☐

## 2. NAME OF OPERATOR

DUGAN PRODUCTION CORP.

## 3. ADDRESS OF OPERATOR

P O Box 208, Farmington, NM 87401

## 4. LOCATION OF WELL (Report location clearly and in accordance with any State requirements)

At surface

1980' FSL - 810' FWL

At proposed prod. zone

## 14. DISTANCE IN MILES AND DIRECTION FROM NEAREST TOWN OR POST OFFICE\*

3 miles N of Counselor, NM

## 15. DISTANCE FROM PROPOSED\*

LOCATION TO NEAREST  
PROPERTY OR LEASE LINE, FT.  
(Also to nearest drlg. unit line, if any)

810'

## 18. DISTANCE FROM PROPOSED LOCATION\*

TO NEAREST WELL, DRILLING, COMPLETED,  
OR APPLIED FOR, ON THIS LEASE, FT. $\frac{1}{4}$  mi. E

## 16. NO. OF ACRES IN LEASE

520

## 19. PROPOSED DEPTH

5700'

17. NO. OF ACRES ASSIGNED  
TO THIS WELL

160

## 20. ROTARY OR CABLE TOOLS

Rotary

## 21. ELEVATIONS (Show whether DF, RT, GR, etc.)

6690' GL; 6702' RKB

## 22. APPROX. DATE WORK WILL START\*

ASAP

## 23. PROPOSED CASING AND CEMENTING PROGRAM

SIZE OF HOLE	SIZE OF CASING	WEIGHT PER FOOT	SETTING DEPTH	QUANTITY OF CEMENT
12-1/4"	9-5/8"	36#	200'	135 sx
7-7/8"	4-1/2"	11.6 & 10.6#	5700'	1620 cu.ft. total slurry

Plan to drill with spud mud to set surface casing. Will then drill with water-mud-gel mixture to test the Gallup Formation. Plan to run IES & CDL logs and, if productive, will set 4½" casing, cementing in 2 stages. Will selectively perforate, frac, clean out after frac and complete using 1½" tubing.

GAS DEDICATED

IN ABOVE SPACE DESCRIBE PROPOSED PROGRAM: If proposal is to deepen or plug back, give data on present productive zone and proposed new productive zone. If proposal is to drill or deepen directionally, give pertinent data on subsurface locations and measured and true vertical depths. Give blowout preventer program, if any.

24.

SIGNED

*Jerry McHugh*  
Jerry McHugh

TITLE

Landman

DATE

8-28-82

(This space for Federal or State office use)

PERMIT NO.

APPROVAL DATE

APPROVED BY

TITLE

CONDITIONS OF APPROVAL, IF ANY:

*ch7*APPROVED  
AS AMENDED

SEP 24 1982

*James F. Smith*  
for JAMES F. SMITH  
DISTRICT ENGINEER

## OIL CONSERVATION DIVISION

P. O. BOX 2088

SANTA FE, NEW MEXICO 87501

Form C-102  
Revised 10-1-78STATE OF NEW MEXICO  
ENERGY AND MINERALS DEPARTMENT

All distances must be from the outer boundaries of the Section.

Operator Dugan Production Corporation		Lease Strawberry		Well No. 1
Unit Letter L	Section 3	Township 23 North	Range 6 West	County Rio Arriba
Actual Footage Location of Well:				
1980	feet from the	South	line and	810
			feet from the	West
				line
Ground Level Elev. 6690	Producing Formation Gallup		Pool Counselors Gallup	Dedicated Acreage: 160 Acres

1. Outline the acreage dedicated to the subject well by colored pencil or hachure marks on the plat below.

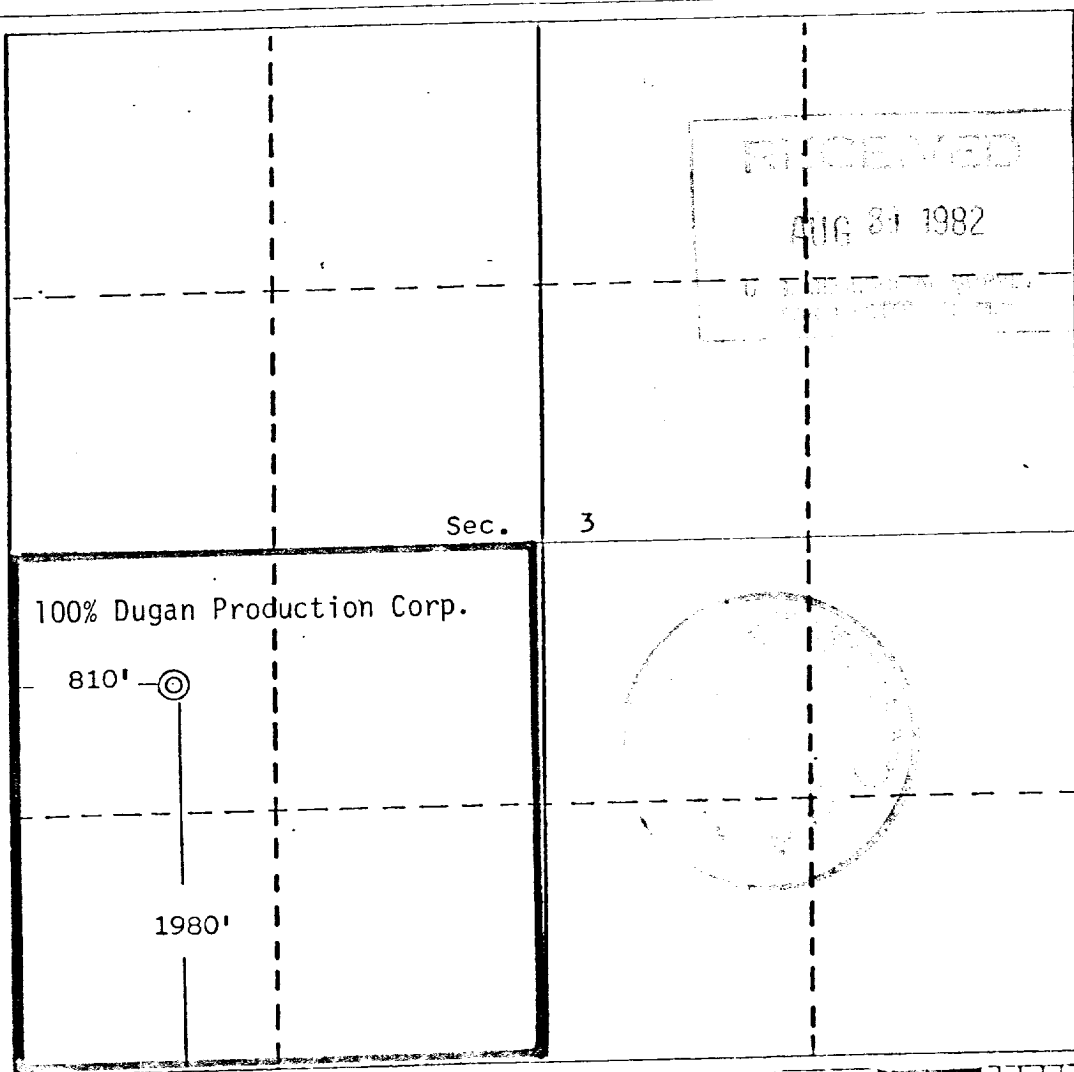
2. If more than one lease is dedicated to the well, outline each and identify the ownership thereof (both as to working interest and royalty).

3. If more than one lease of different ownership is dedicated to the well, have the interests of all owners been consolidated by communitization, unitization, force-pooling, etc?

☐ Yes ☐ No If answer is "yes," type of consolidation \_\_\_\_\_

If answer is "no," list the owners and tract descriptions which have actually been consolidated. (Use reverse side of this form if necessary.) \_\_\_\_\_

No allowable will be assigned to the well until all interests have been consolidated (by communitization, unitization, forced-pooling, or otherwise) or until a non-standard unit, eliminating such interests, has been approved by the Division.



## CERTIFICATION

I hereby certify that the information contained herein is true and complete to the best of my knowledge and belief.

*Jerry McHugh*  
Name  
Jerry McHugh

Position  
Landman

Company  
Dugan Production Corp.

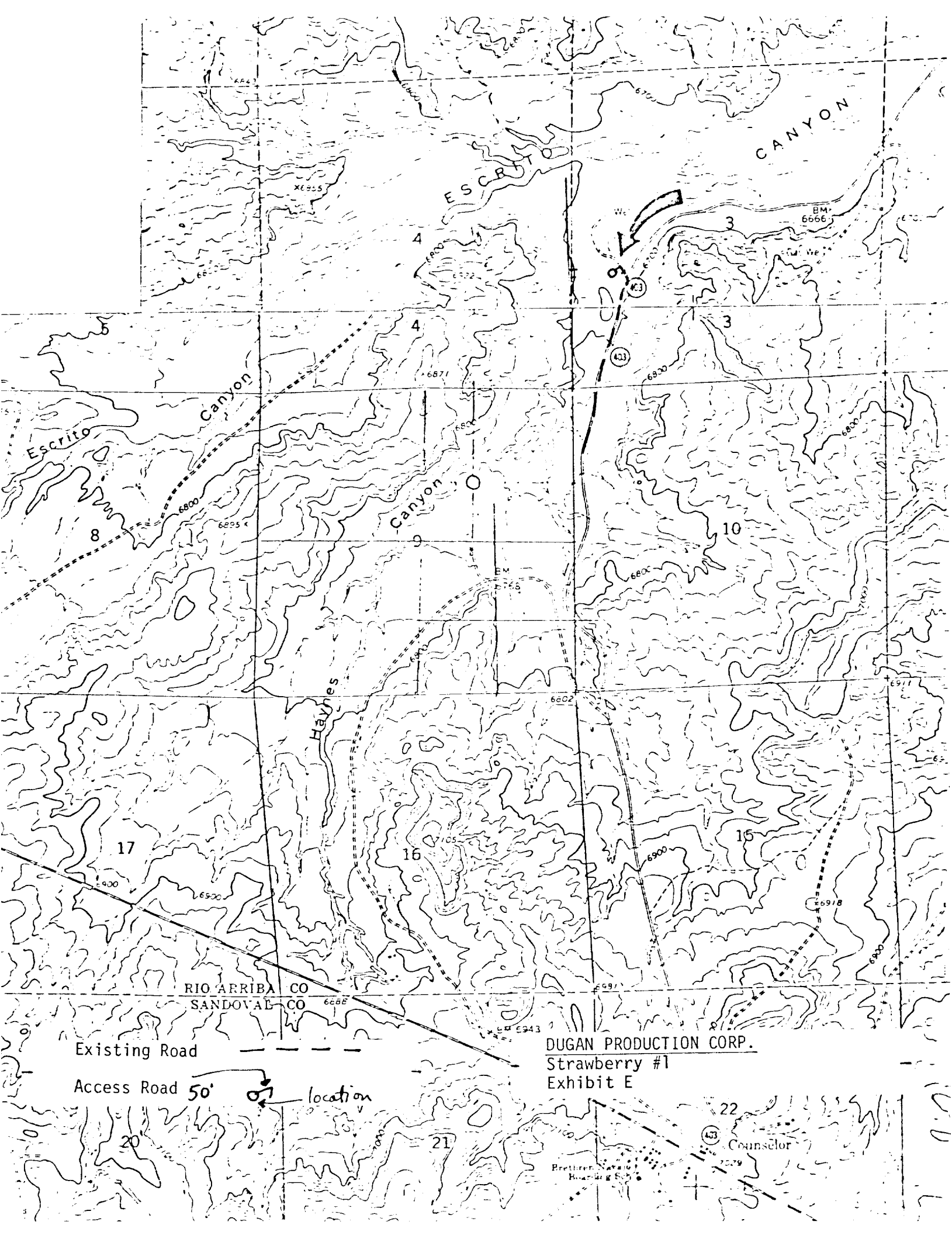
Date  
8-27-82

I hereby certify that the location shown on this plat was made by me or under my supervision, and that the same is true and correct to the best of my knowledge and belief.

Date Surveyed  
August 20, 1980

Registered Professional Engineer  
and/or Land Surveyor

*Edgar L. Risenhoover*  
Certificate No. 5979  
Edgar L. Risenhoover, L.S.



RIO ARRIBA CO  
SANDOVAL CO

Existing Road

Access Road 50'

location

DUGAN PRODUCTION CORP.  
Strawberry #1  
Exhibit E

Counselor

Brethren Navajo  
Boarding Sch.