

UNITED STATES
DEPARTMENT OF THE INTERIOR
GEOLOGICAL SURVEY

30-039-2 3106

5. LEASE DESIGNATION AND SERIAL NO.
Jicarilla Contract #168

6. IF INDIAN, ALLOTTEE OR TRIBE NAME
Jicarilla

7. UNIT AGREEMENT NAME

8. FARM OR LEASE NAME
Mobil Apache

9. WELL NO.
19

10. FIELD AND POOL, OR WILDCAT
South Blanco PC

11. SEC., T., R., M., OR BLK. AND SURVEY OR AREA
D 13-23N-3W-NMPM

12. COUNTY OR PARISH | 13. STATE
Rio Arriba | NM

APPLICATION FOR PERMIT TO DRILL, DEEPEN, OR PLUG BACK

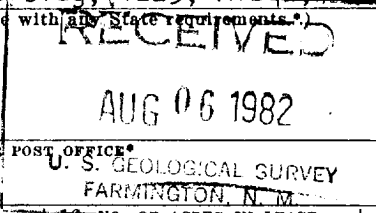
1a. TYPE OF WORK
DRILL DEEPEN PLUG BACK

b. TYPE OF WELL
OIL WELL GAS WELL OTHER SINGLE ZONE MULTIPLE ZONE

2. NAME OF OPERATOR
SHERMAN F. WAGENSELLER

3. ADDRESS OF OPERATOR
Brana Corporation, First Interstate Bldg, 1223, Albu, NM 87102

4. LOCATION OF WELL (Report location clearly and in accordance with any State requirements.)
At surface 790' fnl and 1850' fwl
At proposed prod. zone Same



14. DISTANCE IN MILES AND DIRECTION FROM NEAREST TOWN OR POST OFFICE*
6 miles SW of Lindrith, NM

16. DISTANCE FROM PROPOSED* LOCATION TO NEAREST PROPERTY OR LEASE LINE, FT. (Also to nearest drlg. unit line, if any)
790'

10. NO. OF ACRES IN LEASE
1280

17. NO. OF ACRES ASSIGNED TO THIS WELL
160.00

18. DISTANCE FROM PROPOSED LOCATION* TO NEAREST WELL, DRILLING, COMPLETED, OR APPLIED FOR, ON THIS LEASE, FT.
2640'

19. PROPOSED DEPTH
3200

20. ROTARY OR CABLE TOOLS
Rotary

21. ELEVATIONS (Show whether DF, RT, GR, etc.)
7310 Gr.

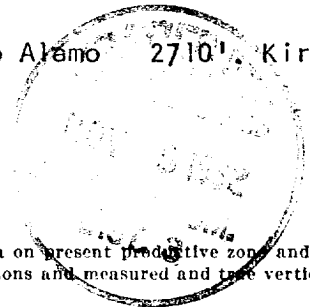
22. APPROX. DATE WORK WILL START*
Sept. 1, 1982

23. PROPOSED CASING AND CEMENTING PROGRAM

SIZE OF HOLE	SIZE OF CASING	WEIGHT PER FOOT	SETTING DEPTH	QUANTITY OF CEMENT
11 1/2	8 5/8"	32.00-J-55	100'	100 sxs-circulate
6 3/4	4 1/2	11.00 - K-55	3200	150sxs-Top of cmt approx. 2000

Plan to spud 11 1/2" hole, drill to 110' and set 100 feet of 8 5/8", casing with sufficient cement to circulate. Drill 6 3/4" hole to 3200' or sufficient depth to test the Pictured Cliffs formation and run appropriate logs. If production is indicated, will run 4 1/2" casing to total depth, cement with 150 sxs, perforate and stimulate. Will run 2 3/8" tubing for production string. 10" Schaffer Double gate hydraulic BOP tested to 3000 psi will be on well during all drilling operations.

Important geologic markers and depths expected: Ojo Alamo 2710', Kirtland 2905', Fruitland 2940' and Picutred Cliffs 3040'



IN ABOVE SPACE DESCRIBE PROPOSED PROGRAM: If proposal is to deepen or plug back, give data on present productive zone and proposed new productive zone. If proposal is to drill or deepen directionally, give pertinent data on subsurface locations and measured and true vertical depths. Give blowout preventer program, if any.

24. SIGNED [Signature] TITLE Morris B. Jones, Engineer DATE August 3, 1982
BRANA CORPORATION

PERMIT NO. _____ APPROVAL DATE _____

APPROVED BY _____ TITLE _____
CONDITIONS OF APPROVAL, IF ANY:

APPROVED
DATE
AS AMENDED
NOV 05 1982
JAMES F. SIMS
DISTRICT ENGINEER

*See Instructions On Reverse Side

NMOCC

NEW MEXICO OIL CONSERVATION COMMISSION
WELL LOCATION AND ACREAGE DEDICATION PLAT

Form C-102
Supersedes C-128
Effective 1-1-65

All distances must be from the outer boundaries of the Section.

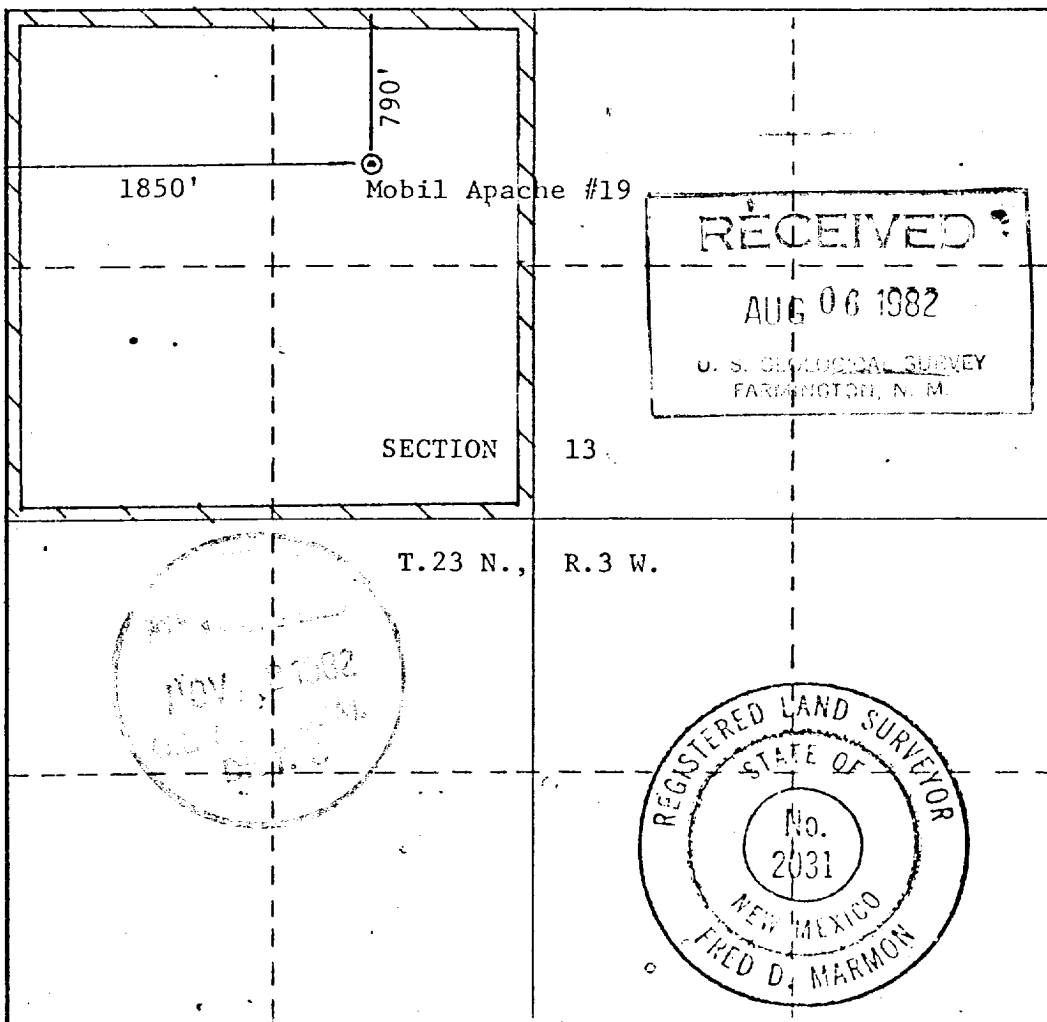
Operator SHERMAN F. WAGENSELLER			Lease Mobil Apache		Well No. #19
Unit Letter C	Section 13	Township 23 North	Range 3 West	County Rio Arriba	
Actual Footage Location of Well: 790' feet from the North line and 1850' feet from the West line					
Ground Level Elev. 7310	Producing Formation Pictured Cliffs		Pool South Blanco	Dedicated Acreage: 160.00 Acres	

1. Outline the acreage dedicated to the subject well by colored pencil or hachure marks on the plat below.
2. If more than one lease is dedicated to the well, outline each and identify the ownership thereof (both as to working interest and royalty).
3. If more than one lease of different ownership is dedicated to the well, have the interests of all owners been consolidated by communitization, unitization, force-pooling, etc?

Yes No . If answer is "yes," type of consolidation _____

If answer is "no," list the owners and tract descriptions which have actually been consolidated. (Use reverse side of this form if necessary.) _____

No allowable will be assigned to the well until all interests have been consolidated (by communitization, unitization, forced-pooling, or otherwise) or until a non-standard unit, eliminating such interests, has been approved by the Commission.



CERTIFICATION

I hereby certify that the information contained herein is true and complete to the best of my knowledge and belief.

Morris B. Jones

Morris B. Jones

Position

Engineer

Company

Brana Corporation

Date

August 3, 1982

I hereby certify that the well location shown on this plat was plotted from field notes of actual surveys made by me or under my supervision, and that the same is true and correct to the best of my knowledge and belief.

Date Surveyed

July 25, 1982

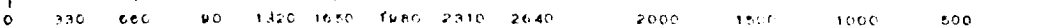
Registered Professional Engineer and/or Land Surveyor

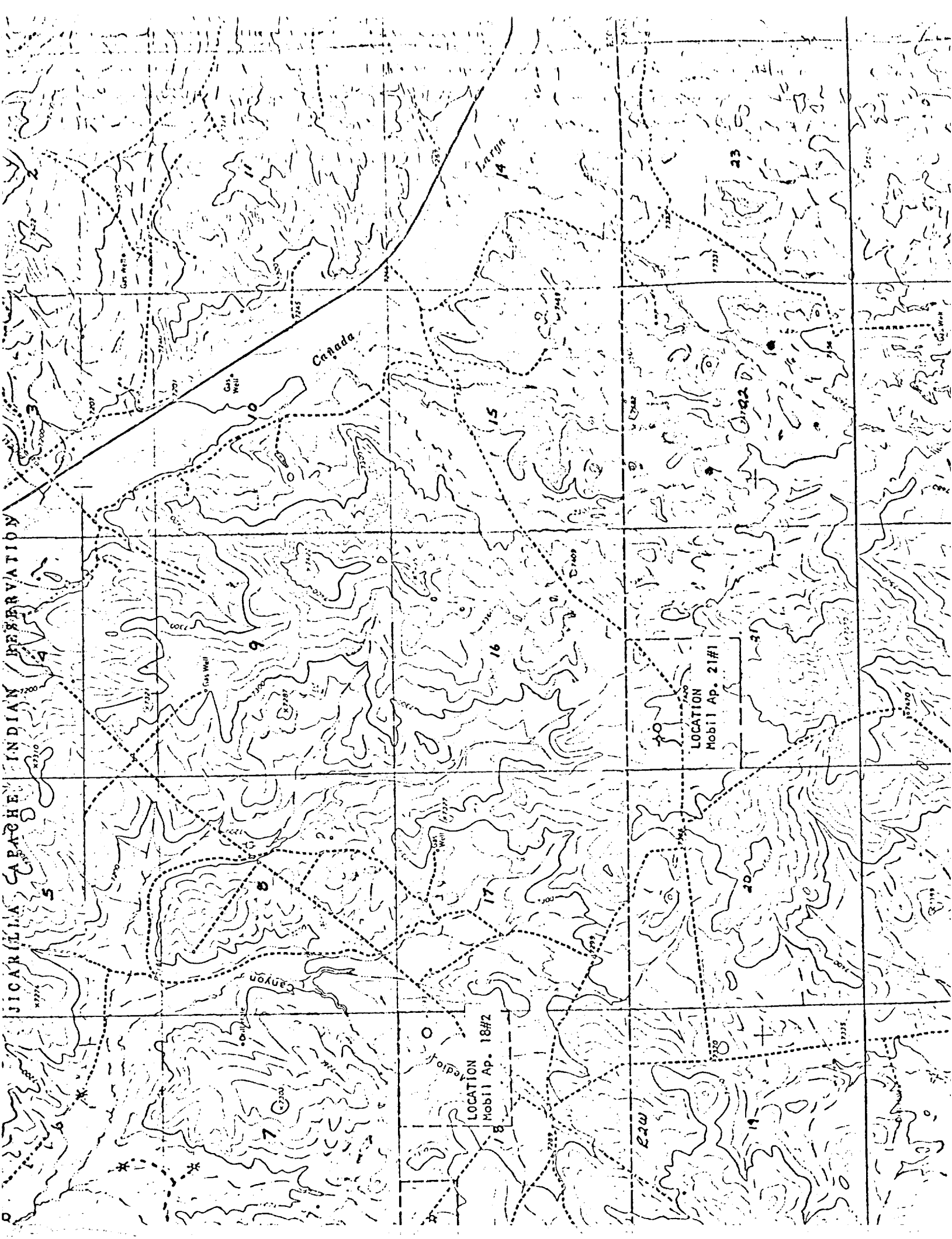
Fred Marmon

Fred Marmon

Certificate No.

N.M. 2031





JICARILLA APACHE INDIAN RESERVATION

Canada

LOCATION Mobil Ap. 18#2

LOCATION Mobil Ap. 21#1

