

UNITED STATES
DEPARTMENT OF THE INTERIOR

GEOLOGICAL SURVEY

APPLICATION FOR PERMIT TO DRILL, DEEPEN, OR PLUG BACK

1a. TYPE OF WORK

DRILL ☒DEEPEN ☐PLUG BACK ☐

b. TYPE OF WELL

OIL
WELL ☒GAS
WELL ☐OTHER ☐SINGLE
ZONE ☐MULTIPLE
ZONE ☒

2. NAME OF OPERATOR

Chace Oil Company, Inc.

3. ADDRESS OF OPERATOR

313 Washington, SE, Albuquerque, NM 87108

4. LOCATION OF WELL (Report location clearly and in accordance with any State requirements.)

At surface

Unit 'H' - 1670' FNL & 430' FEL

At proposed prod. zone

14. DISTANCE IN MILES AND DIRECTION FROM NEAREST TOWN OR POST OFFICE*

12 miles SW of Lindrith, New Mexico

15. DISTANCE FROM PROPOSED*

LOCATION TO NEAREST

PROPERTY OR LEASE LINE, FT.

(Also to nearest drlg. unit line, if any)

430' Lease line

350' Unit line

16. NO. OF ACRES IN LEASE

1920⁷ 18952818. DISTANCE FROM PROPOSED LOCATION*
TO NEAREST WELL, DRILLING, COMPLETED,
OR APPLIED FOR, ON THIS LEASE, FT.

1500'

19. PROPOSED DEPTH

7680'

21. ELEVATIONS (Show whether DF, RT, GR, etc.)

7400 GL

23.

PROPOSED CASING AND CEMENTING PROGRAM

SIZE OF HOLE	SIZE OF CASING	WEIGHT PER FOOT	SETTING DEPTH	QUANTITY OF CEMENT
9 3/4"	8 5/8"	22# (J-55)	225'	225 sxs Class B cement (405 CF)
7 7/8"	4 1/2"	11.6# (N-80)	7680'	1st stage: 750 sxs (1350 CF) 50/50 pozmix. 2nd stage: 550 sxs (990 CF) 40/60 pozmix, 12% gel. 35 sxs (63 CF) Class B cement.

Drill 230' of 9 3/4" surface hole. Set 225' of 8 5/8" casing. Cement to surface with 225 sxs (405 CF) cement. Use an oil base mud, (15% oil), and Schaeffer 5000# standard doublegate hydraulic BOP. Drill 7 7/8" hole to 7680' to test Dakota formation.

Wasatch formation on surface. Estimated tops: Ojo-2670'; Pictured Cliffs-3115'; Chacra-3465'; Cliff House-4650'; Pt Lookout-5180'; Gallup-6275'; Tocito-6925'; Greenhorn-7250'; Dakota 'A'-7335'; Dakota 'D'-7475'; Burro Canyon-7580'.

D. V. Tool @ 3165'. Float collar @ 7650'.

IN ABOVE SPACE DESCRIBE PROPOSED PROGRAM: If proposal is to deepen or plug back, give data on present productive zone and proposed new productive zone. If proposal is to drill or deepen directionally, give pertinent data on subsurface locations and measured and true vertical depths. Give blowout preventer program, if any.

24.

SIGNED

Geologist

DATE 1-12-83

(This space for Federal or State office use)

PERMIT NO.

APPROVAL DATE

APPROVED BY

TITLE

CONDITIONS OF APPROVAL, IF ANY:

APPROVED
AS AMENDED

MAY 04 1983

JAMES F. SIMS
DISTRICT ENGINEER

Acting Area Manager

*See Instructions On Reverse Side

NMOC

All distances must be from the outer boundaries of the Section.

Operator CHACE OIL COMPANY, INC.		Lease Jicarilla Tribal #71		Well No. (14)
Unit Letter H	Section 10	Township 23 NORTH	Range 4 WEST	County RIO ARriba
Actual Footage Location of Well: 1670 feet from the NORTH line and 430 feet from the EAST line				
Ground Level Elev. 7400	Producing Formation GALLUP-DAKOTA	Pool S. Lindrith Gallup-Dakota	Dedicated Acreage 40 Acres	

1. Outline the acreage dedicated to the subject well by colored pencil or hatchure marks on the plat below.

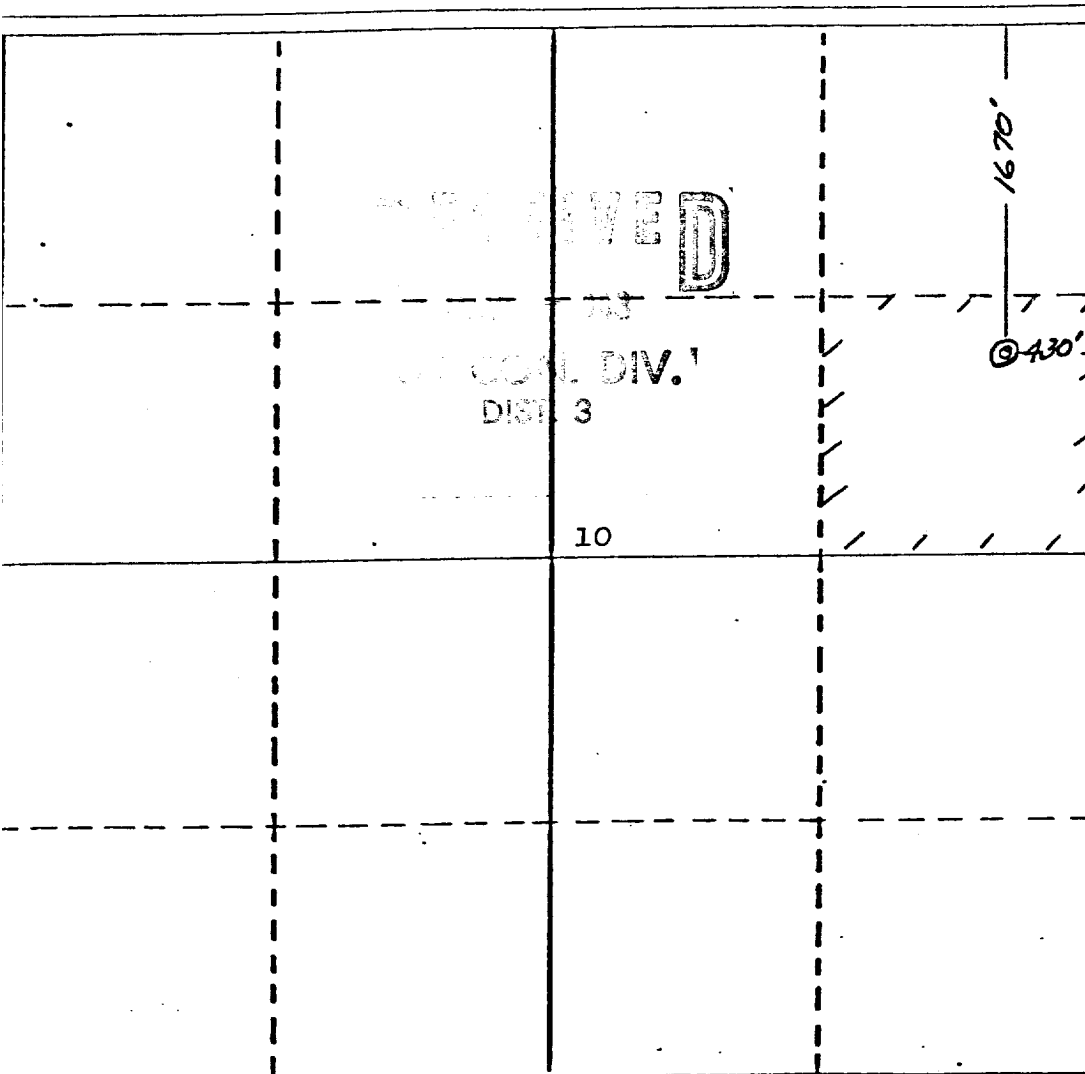
2. If more than one lease is dedicated to the well, outline each and identify the ownership thereof (both as to working interest and royalty).

3. If more than one lease of different ownership is dedicated to the well, have the interests of all owners been consolidated by communitization, unitization, force-pooling, etc?

☐ Yes ☐ No If answer is "yes," type of consolidation _____

If answer is "no," list the owners and tract descriptions which have actually been consolidated. (Use reverse side of this form if necessary.) _____

No allowable will be assigned to the well until all interests have been consolidated (by communitization, unitization, forced-pooling, or otherwise) or until a non-standard unit, eliminating such interests, has been approved by the Division.



CERTIFICATION

I hereby certify that the information contained herein is true and complete to the best of my knowledge and belief.

[Signature]

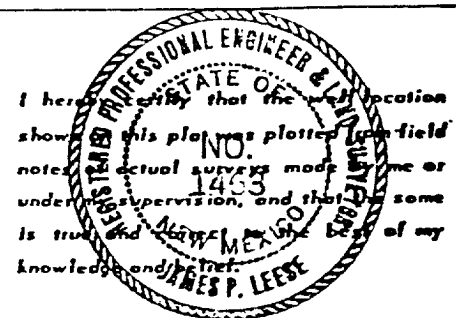
Name _____

Position **Geologist**

Company **Chace Oil Co**

Date **1-10-83**

Date _____

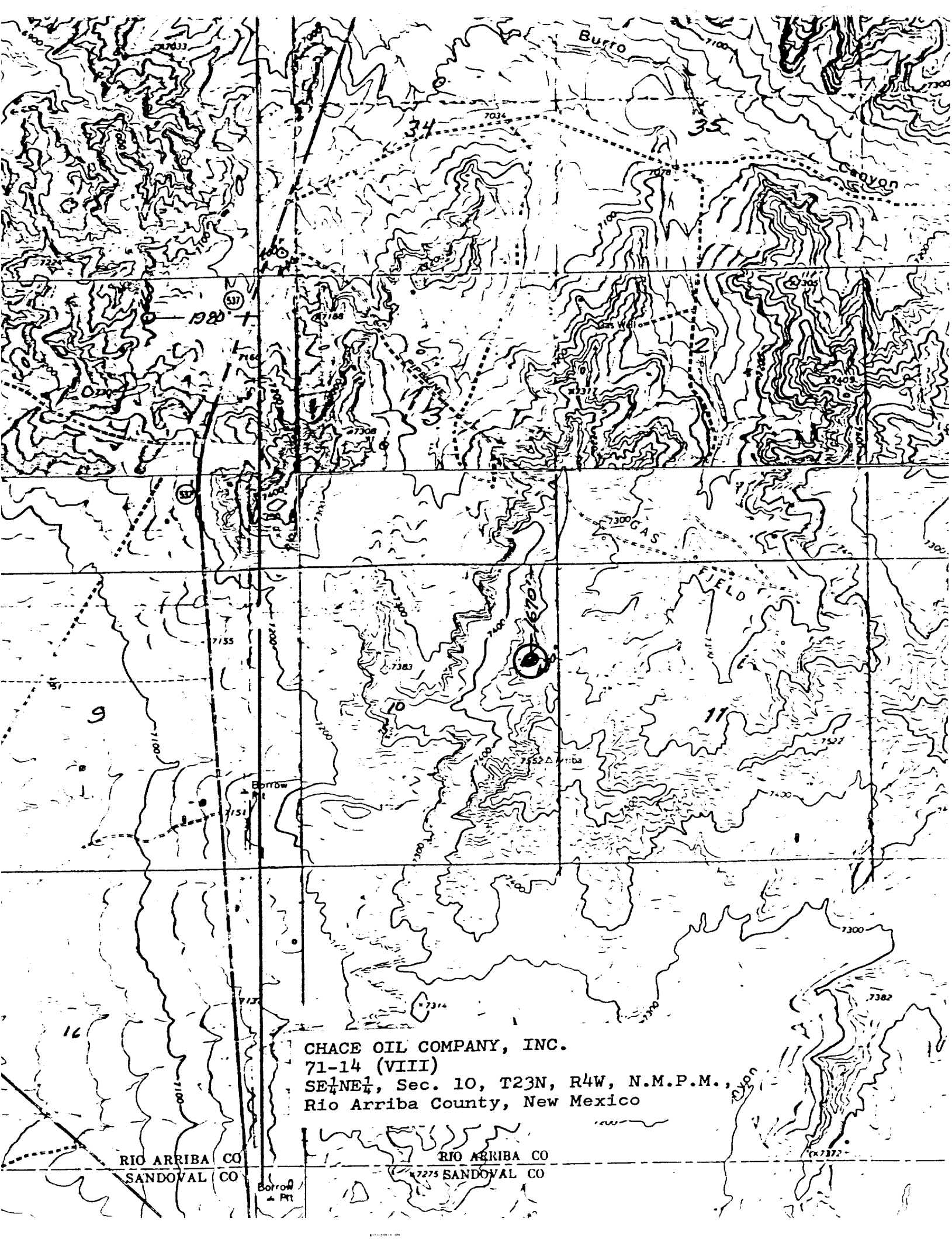


Date Surveyed
November 23, 1982

Registered Professional Engineer
and/or Land Surveyor

[Signature]
James P. Leese

Certificate No.
1463



CHACE OIL COMPANY, INC.
71-14 (VIII)
SE $\frac{1}{4}$ NE $\frac{1}{4}$, Sec. 10, T23N, R4W, N.M.P.M.,
Rio Arriba County, New Mexico

RIO ARRIBA CO
SANDOVAL CO

RIO ARRIBA CO
SANDOVAL CO