

*Reentry of
Leases Drilling J#1*

**UNITED STATES
DEPARTMENT OF THE INTERIOR
BUREAU OF LAND MANAGEMENT**

SUBMIT IN TRIPLICATE*
(Other instructions on
reverse side)

Form approved.
Budget Bureau No. 1004-0136
Expires August 31, 1985

APPLICATION FOR PERMIT TO DRILL, DEEPEN, OR PLUG BACK

1a. TYPE OF WORK

DRILL ☒

DEEPEN ☒

PLUG BACK ☐

b. TYPE OF WELL

OIL
WELL ☒

GAS
WELL ☐

OTHER ☐

2. NAME OF OPERATOR

Noel Reynolds, c/o Ned Dollar, Agent

3. ADDRESS OF OPERATOR

P. O. Box 399 Aztec, NM 87410

**BUREAU OF LAND MANAGEMENT
FARMINGTON RESOURCE AREA**

4. LOCATION OF WELL (Report location clearly and in accordance with any State requirements.)*

At surface

495' FNL & 825' FNL Section 5, T24N., R1E.

At proposed prod. zone

14. DISTANCE IN MILES AND DIRECTION FROM NEAREST TOWN OR POST OFFICE*

Approximatley 2 miles south of Llaves, New Mexico.

15. DISTANCE FROM PROPOSED

LOCATION TO NEAREST

PROPERTY OR LEASE LINE, FT.

(Also to nearest drlg. unit line, if any)

495

16. NO. OF ACRES IN LEASE

557.98

**17. NO. OF ACRES ASSIGNED
TO THIS WELL**

~~160~~ 158.19

18. DISTANCE FROM PROPOSED LOCATION*

TO NEAREST WELL, DRILLING, COMPLETED,
OR APPLIED FOR, ON THIS LEASE, FT.

19. PROPOSED DEPTH

4700'

20. ROTARY OR CABLE TOOLS

Rotary-Air

21. ELEVATIONS (Show whether DF, RT, GR, etc.)

7033' GR

**DRILLING OPERATIONS AUTHORIZED ARE
SUBJECT TO COMPLIANCE WITH ATTACHED
"GENERAL REQUIREMENTS"**

22. APPROX. DATE WORK WILL START*

Upon Approval by BLM

23. PROPOSED CASING AND CEMENTING PROGRAM

This action is subject to technical and
procedural review pursuant to 43 CFR 3165.3
and appeal pursuant to 43 CFR 3165.4.

SIZE OF HOLE	SIZE OF CASING	WEIGHT PER FOOT	SETTING DEPTH	
13-3/4"	9-5/8"	J-55	150'-200'	150 sx Class B
8-3/4"	7"	K-55	3100'-3300'	200 sx Class B
6-3/4"	4-1/2"	J-55	4000' + 4700'	

Drill to a depth of 3100'-3300'. Set 7" casing and cement. Complete drilling with air and set liner if necessary. A BOP will be utilized.

A 6-3/4" hole to be drilled with air.

This is a re-submittal of a previously approved Application For Permit To Drill well.

IN ABOVE SPACE DESCRIBE PROPOSED PROGRAM. If proposal is to deepen or plug back, give data on present productive zone and proposed new productive zone. If proposal is to drill or deepen directionally, give pertinent data on subsurface locations and measured to the vertical depths. Give blowout preventer program, if any.

24.

SIGNED

Ned Dollar

TITLE

Agent

DATE 8-21-86

(This space for Federal or State office use)

PERMIT NO.

APPROVAL DATE

APPROVED BY

TITLE

DATE

CONDITIONS OF APPROVAL, IF ANY:

/s/ J. Stan McKee

NMOCC

*See Instructions On Reverse Side

All distances must be from the outer boundaries of the Section.

Noel Reynolds			Lease NM33036 Skipper		Well No. #1
Section	Township	Range	County		
D 5	24 North	1 E	Rio Arriba		
Location of Well:					
825	feet from the West	line and	495	feet from the North	line
Level Elev. 7033	Producing Formation Tocito	Pool Puerto Chiquito East	Dedicated Acreage: 160 Acres		

1. Outline the acreage dedicated to the subject well by colored pencil or hatchure marks on the plat below.
2. If more than one lease is dedicated to the well, outline each and identify the ownership thereof (both as to working interest and royalty).
3. If more than one lease of different ownership is dedicated to the well, have the interests of all owners been consolidated by communitization, unitization, force-pooling, etc?

☐ Yes ☒ No If answer is "yes," type of consolidation _____

If answer is "no," list the owners and tract descriptions which have actually been consolidated (Use reverse side of this form if necessary.) _____

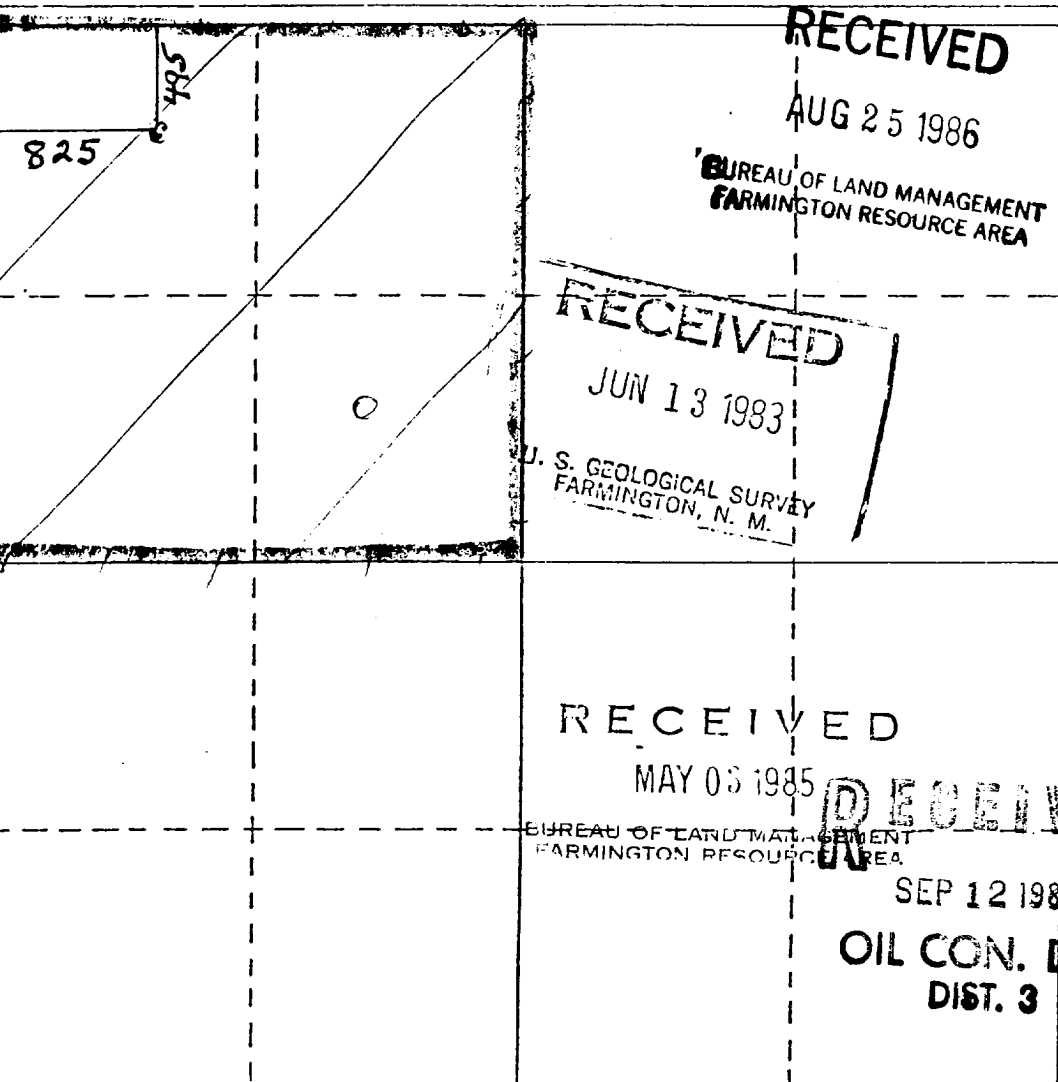
No allowable will be assigned to the well until all interests have been consolidated (by communitization, unitization, forced-pooling, or otherwise) or until a non-standard unit, eliminating such interests, has been approved by the Division.

RECEIVED

JUN 27 1983

OIL CON. DIV.

DIST. 3



CERTIFICATION

I hereby certify that the information contained herein is true and complete to the best of my knowledge and belief.

Ned Dollar

Name

Ned Dollar

Position

Agent

Company

Noel Reynolds

Date

April 29, 1985

I hereby certify that the well location shown on this plat was plotted from field notes of actual surveys made by me or under my supervision, and that the same is true and correct to the best of my knowledge and belief.

Ned Dollar

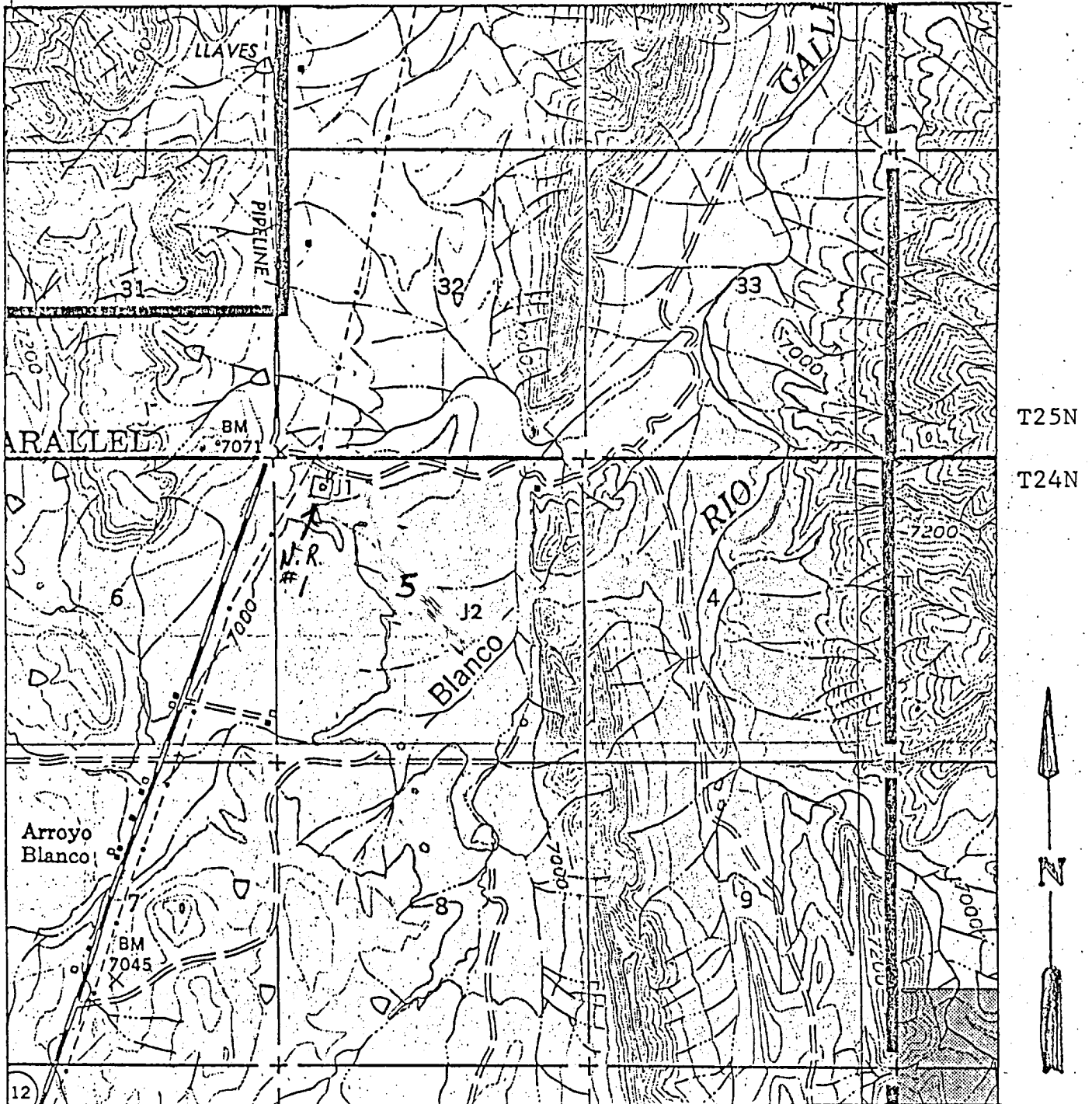
Date Surveyed

NEW MEXICO
REGISTERED PROFESSIONAL ENGINEER
AND SURVEYOR

Certificate No.

Figure 1

R 1 E



USFS LLAVES, NEW MEXICO, 1972
 Wells and Access NM33036 15' Planimetric Quadrangle
 Scale 2" = 5280'

JICARILLA ARCHAEOLOGICAL SERVICES REPORT CR83-28, JUNE 17, 1983