

UNITED STATES  
DEPARTMENT OF THE INTERIOR  
GEOLOGICAL SURVEY

## APPLICATION FOR PERMIT TO DRILL, DEEPEN, OR PLUG BACK

1a. TYPE OF WORK DRILL ☒ DEEPEN ☐ PLUG BACK ☐  
b. TYPE OF WELL Commingled  
OIL WELL ☐ GAS WELL ☐ OTHER Gallup Dakota SINGLE ZONE ☐ MULTIPLE ZONE ☒  
2. NAME OF OPERATOR W.B. Martin and Associates  
3. ADDRESS OF OPERATOR 2110 N. Sullivan, Farmington, N.M. 87401  
4. LOCATION OF WELL (Report location clearly and in accordance with any State requirements)  
At surface 1700' FNL and 990' FWL  
At proposed prod. zone Same  
14. DISTANCE IN MILES AND DIRECTION FROM NEAREST TOWN OR POST OFFICE 18.5 miles NW of Cuba, N.M.  
15. DISTANCE FROM PROPOSED\* LOCATION TO NEAREST PROPERTY OR LEASE LINE, FT. (Also to nearest drlg. unit line, if any) 1700' FNL  
16. NO. OF ACRES IN LEASE ± 2238  
17. NO. OF ACRES ASSIGNED TO THIS WELL 40  
18. DISTANCE FROM PROPOSED LOCATION\* TO NEAREST WELL, DRILLING COMPLETED, OR APPLIED FOR, ON THIS LEASE, FT. 100' NE  
19. PROPOSED DEPTH 7180'  
20. ROTARY OR CABLE TOOLS Rotary  
21. ELEVATIONS (Show whether DF, RT, GR, etc.) 6951' GR  
22. APPROX. DATE WORK WILL START\*  
23. DRILLING OPERATIONS AUTHORIZED ARE SUBJECT TO COMPLIANCE WITH ATTACHED PROPOSED CASING AND CEMENTING PROGRAM  
GENERAL REQUIREMENTS  
This action is subject to administrative appeal pursuant to 30 U.S.C. 250.

SIZE OF HOLE	SIZE OF CASING	WEIGHT PER FOOT	SETTING DEPTH	QUANTITY OF CEMENT
12 1/4"	8 5/8" OD J55	24 lbs	250'	236 ft <sup>3</sup> (200 sks)
7 7/8"	5 1/2" OD J55	17 lbs	7180'	See Operations Plan

Proposed Program: 1. Drill 12 1/4" hole to ±250'. Run and set 8 5/8" casing. Circulate Cement to surface.

2. WOC 12 hours.  
3. Install and Pressure Test BOP to 1000 psig.  
4. Drill 7 7/8" hole to T.D. using low solids-low water loss mud.  
5. Run and set 5 1/2" casing with stage collars and cement.  
6. Selectively perforate and stimulate Gallup & Dakota Formation.

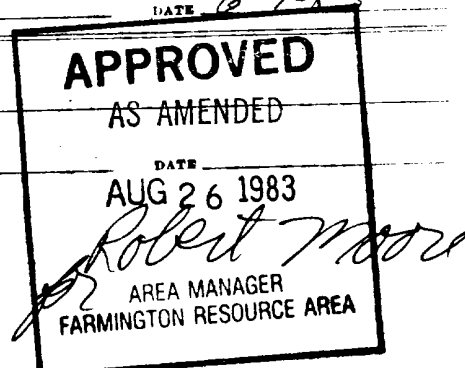
RECEIVED

AUG 30 1983

OIL CON. DIV.  
DIST. 3

IN ABOVE SPACE DESCRIBE PROPOSED PROGRAM: If proposal is to deepen or plug back, give data on present productive zone and proposed new productive zone. If proposal is to drill or deepen directionally, give pertinent data on subsurface locations and measured and true vertical depths. Give blowout preventer program, if any.

SIGNED W.B. Martin TITLE Operator DATE 6-9-83  
(This space for Federal or State office use)  
PERMIT NO. \_\_\_\_\_ APPROVAL DATE \_\_\_\_\_  
APPROVED BY \_\_\_\_\_ TITLE \_\_\_\_\_  
CONDITIONS OF APPROVAL, IF ANY: shd



All distances must be from the outer boundaries of the Section.

Operator <b>W. B. MARTIN &amp; ASSOCIATES, INC.</b>			Lease <b>MARTIN-FLORANCE</b>		Well No. <b>19</b>
Section <b>5</b>	Township <b>23N</b>	Range <b>4W</b>	County <b>Rio Arriba</b>		
Actual Footage Location of Well: <b>1700</b> feet from the <b>North</b> line and <b>990</b> feet from the <b>West</b> line					
Ground Level Elev. <b>6951</b>	Producing Formation <b>Gallup Dakota Combed</b>	Pool <b>South Lincolnth Gallup Dakota</b>	Dedicated Acreage: <b>70</b> Acres		

1. Outline the acreage dedicated to the subject well by colored pencil or hachure marks on the plat below.
2. If more than one lease is dedicated to the well, outline each and identify the ownership thereof (both as to working interest and royalty).
3. If more than one lease of different ownership is dedicated to the well, have the interests of all owners been consolidated by communitization, unitization, force-pooling, etc?

☐ Yes ☒ No If answer is "yes," type of consolidation \_\_\_\_\_

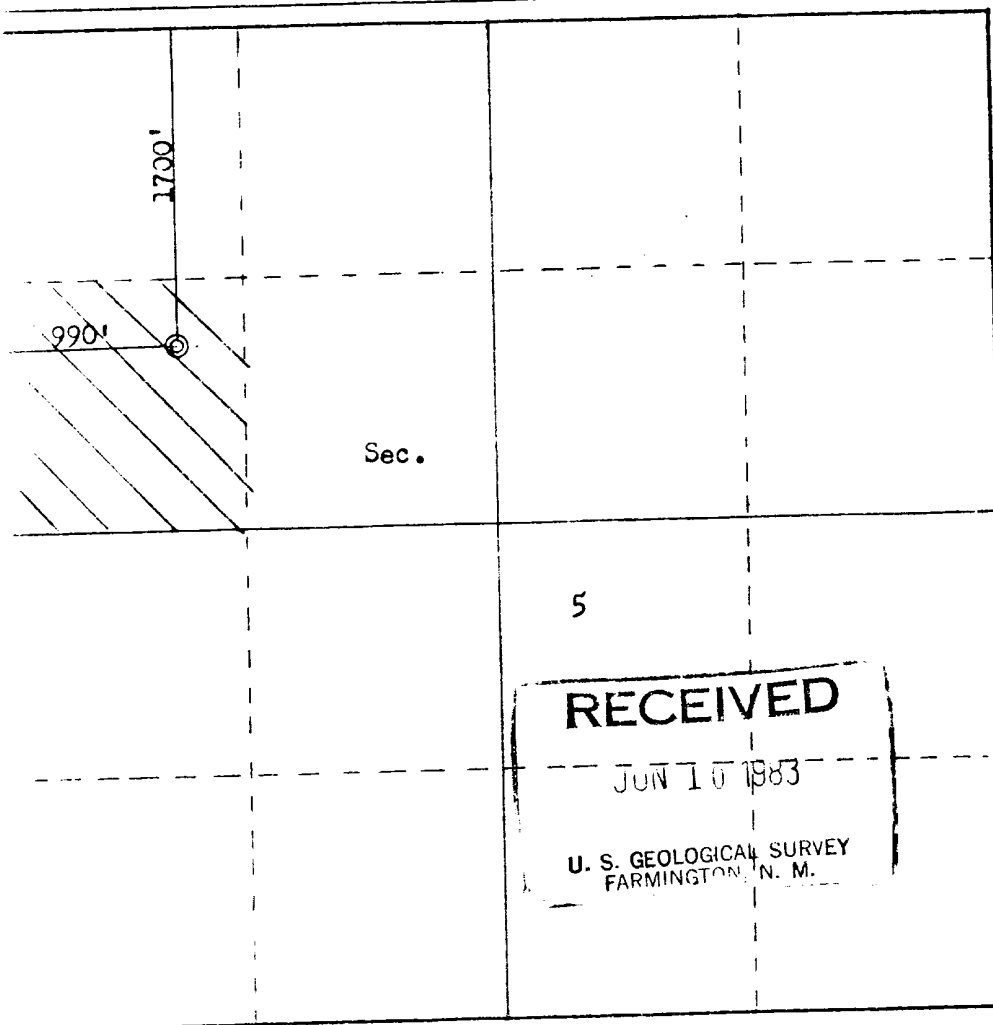
If answer is "no," list the owners and tract descriptions which have actually been consolidated. (Use reverse side of this form if necessary.) \_\_\_\_\_

No allowable will be assigned to the well until all interests have been consolidated (by communitization, unitization, forced-pooling, or otherwise) or until a non-standard unit, eliminating such interests, has been approved by the Commission.

**RECEIVED**

AUG 30 1983

**OIL CON. DIV.**  
**DIST. 3**



Scale: 1"=1000'

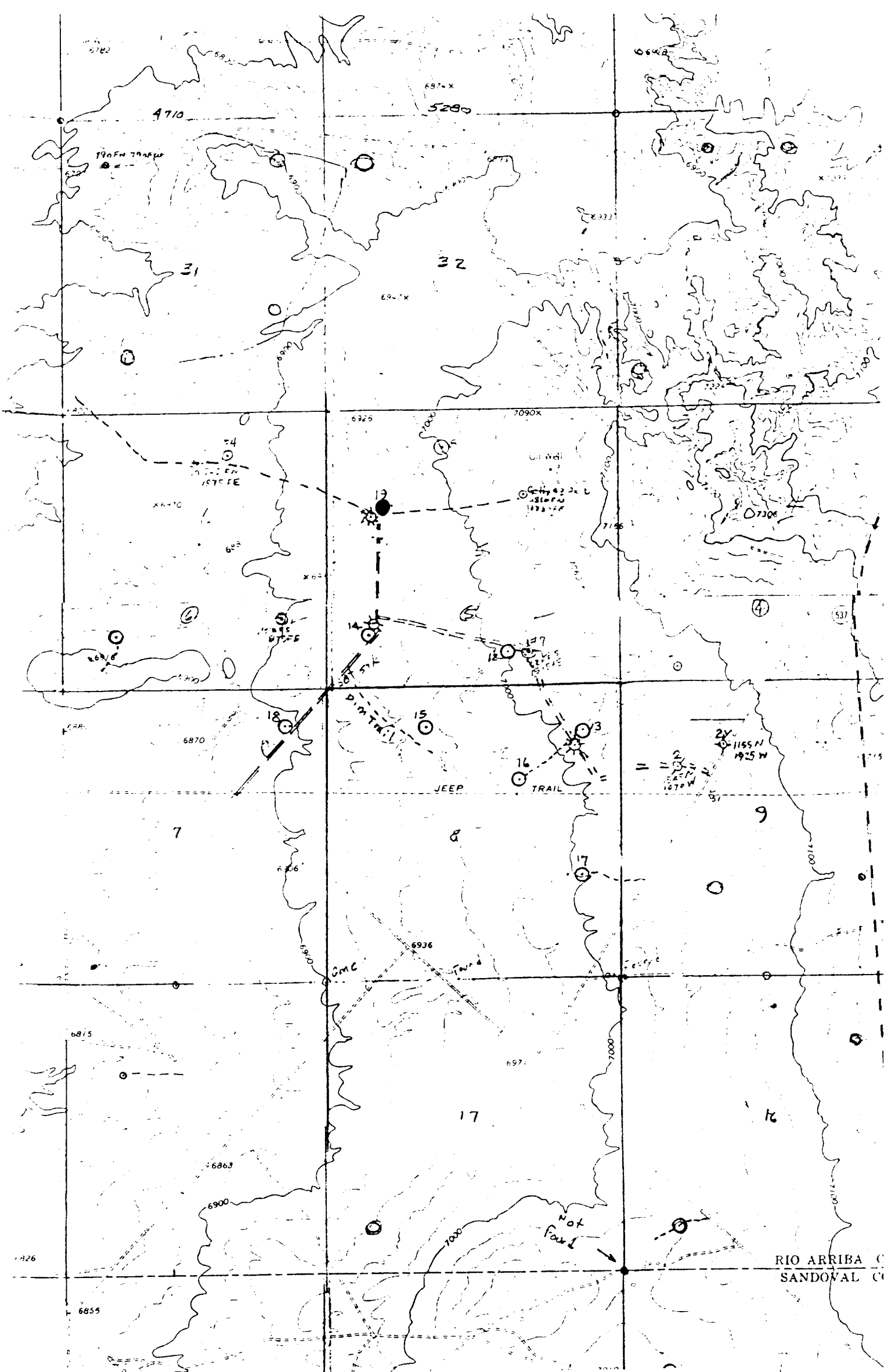
**CERTIFICATION**

I hereby certify that the information contained herein is true and complete to the best of my knowledge and belief.

Name  
**Billy Martin**  
Position  
**W. B. Martin & Associates Inc.**  
Company  
**Operator Representation**  
Date  
**6/6/83**

I hereby certify that the well location shown on this plat was plotted from field notes of actual surveys made by me or under my supervision, and that the same is true and correct to the best of my knowledge and belief.

Date Surveyed  
**May 31, 1983**  
Registered Professional Engineer and Land Surveyor  
**Fred E. Kerr Jr.**  
Certificate No.  
**3950**



Vicinity Map for  
W. B. MARTIN & ASSOC., INC. #19 MARTIN-FLORANCE  
1700'FNL 990'FWL Sec. 5-T23N-RLW  
RIO ARRIBA COUNTY, NEW MEXICO