

UNITED STATES  
DEPARTMENT OF THE INTERIOR  
GEOLOGICAL SURVEY(Other instructions on  
reverse side)30 239-23424  
5. LEASE DESIGNATION AND SERIAL NO.

NM 24458

6. IF EXIST, ASSIGN OR FIELD NAME

7. UNIT AGREEMENT NAME

8. FARM OR LEASE NAME

Fahrenheit

9. WELL NO.

2

10. FIELD AND POOL, OR WILDCAT

Counselors Gallup ext

11. SEC., T., R., M., OR ELE.  
AND SURVEY OR AREA

D Sec. 11, T23N, R6W

12. COUNTY OR PARISH 13. STATE

Rio Arriba

NM

## APPLICATION FOR PERMIT TO DRILL, DEEPEN, OR PLUG BACK

## 12. TYPE OF WORK

DRILL ☒DEEPEN ☐PLUG BACK ☐

## b. TYPE OF WELL

OIL  
WELL ☐GAS  
WELL ☒

OTHER

SINGLE  
ZONE ☐MULTIPLE  
ZONE ☐

## 2. NAME OF OPERATOR

Dugan Production Corporation

## 3. ADDRESS OF OPERATOR

Box 208, Farmington, New Mexico 87499

## 4. LOCATION OF WELL (Report location clearly and in accordance with any State requirements.)\*

At surface

980' FNL - 810' FWL

At proposed prod. zone

RECEIVED

APR 05 1984

## 14. DISTANCE IN MILES AND DIRECTION FROM NEAREST TOWN OR POST OFFICE\*

Counselors, NM is 3 miles south

BUREAU OF LAND MANAGEMENT  
FARMINGTON RESOURCE AREA

## 15. DISTANCE FROM PROPOSED\*

LOCATION TO NEAREST

PROPERTY OR LEASE LINE, FT.

(Also to nearest drlg. unit line, if any) 810'

## 16. NO. OF ACRES IN LEASE

440

## 17. NO. OF ACRES ASSIGNED

TO THIS WELL

160

## 18. DISTANCE FROM PROPOSED LOCATION\*

TO NEAREST WELL, DRILLING, COMPLETED,

OR APPLIED FOR, ON THIS LEASE, FT. 1/2 mile south

## 19. PROPOSED DEPTH

5675'

## 20. ROTARY OR CABLE TOOLS

rotary

## 21. ELEVATIONS (Show whether DF, RT, GR, etc.)

6815' GL; 6827 RKB

DRILLING OPERATIONS AUTHORIZED ARE

SUBJECT TO COMPLIANCE WITH ATTACHED

"GENERAL REQUIREMENTS"

PROPOSED CASING AND CEMENTING PROGRAM

## 22. APPROX. DATE WORK WILL START\*

ASAP

This action is subject to administrative  
appeal pursuant to 30 CFR 290.

## 23.

SIZE OF HOLE	SIZE OF CASING	WEIGHT PER FOOT	SETTING DEPTH	QUANTITY OF CEMENT
12 1/4"	8-5/8"	32#	200'	159 cf circulated to surface
7-7/8"	4 1/2"	11.6#/10.5	5675'	1630 cf cemented in two stages and circulated to surface.

Plan to drill with spud mud to set surface casing @ 200'. Will then drill with water-mud-gel mixture to test the Gallup formation. Plan to run IES and CDL logs. If the well appears productive, will run 4 1/2" casing, cementing in 2 stages. Will then selectively perforate, frac, clean out after frac and complete well using 2-3/8" OD tubing.

RECEIVED  
APR 05 1984  
OIL CON. DIV.  
DIST. 3

IN ABOVE SPACE DESCRIBE PROPOSED PROGRAM: If proposal is to deepen or plug back, give data on present productive zone and proposed new productive zone. If proposal is to drill or deepen directionally, give pertinent data on subsurface locations and measured and true vertical depths. Give blowout preventer program, if any.

## 24.

SIGNED Jerry McHughTITLE Agent

(This space for Federal or State office use)

PERMIT NO. \_\_\_\_\_

APPROVAL DATE \_\_\_\_\_

APPROVED BY \_\_\_\_\_

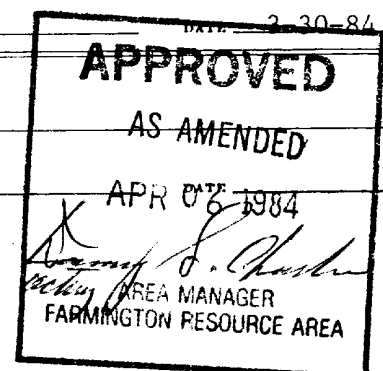
TITLE \_\_\_\_\_

CONDITIONS OF APPROVAL, IF ANY:

ahx

\*See Instructions On Reverse Side

NMOCC



## OIL CONSERVATION DIVISION

STATE OF NEW MEXICO  
ENERGY AND MINERALS DEPARTMENTP. O. BOX 2088  
SANTA FE, NEW MEXICO 87501Form C-102  
Revised 10-1-78

All distances must be from the outer boundaries of the Section.

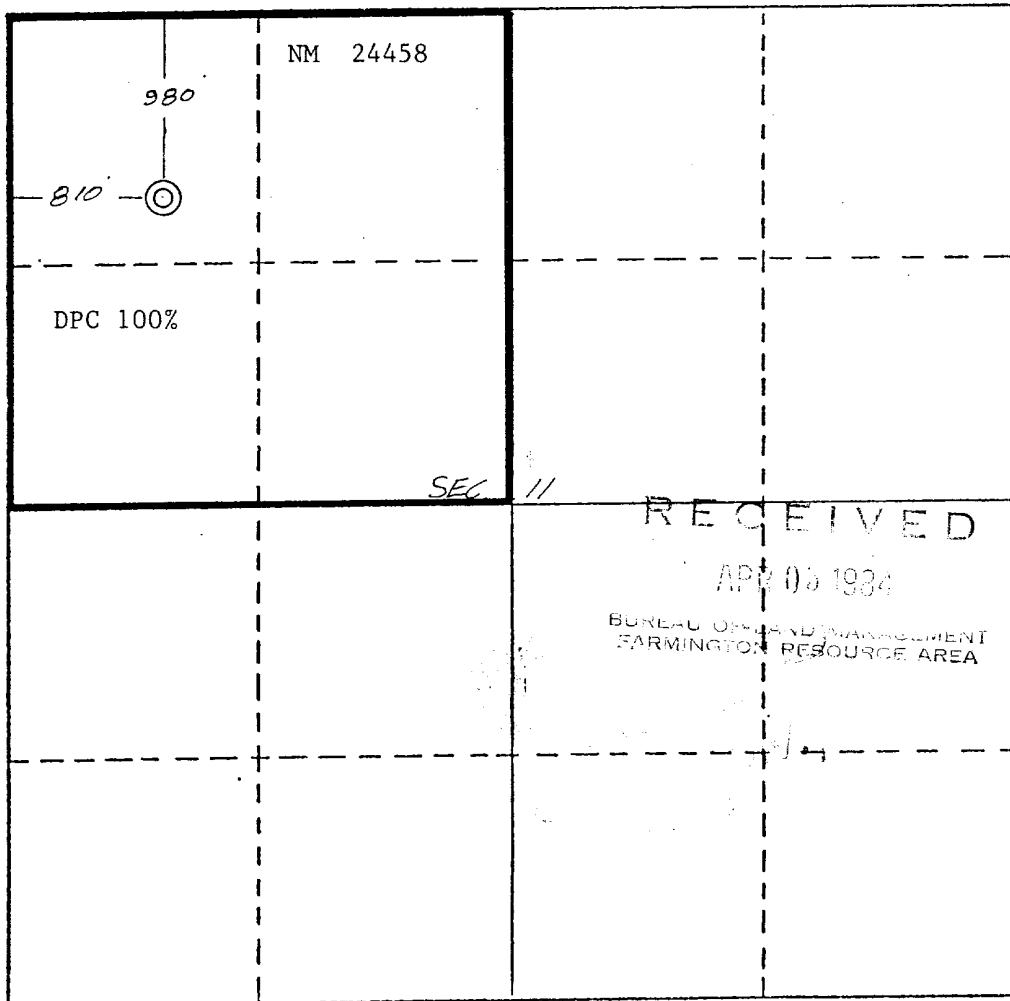
Operator Dugan Production Corporation			Lease Fahrenheit		Well No. No. 2
Unit Letter D	Section 11	Township 23 North	Range 6 West	County Rio Arriba	
Actual Footage Location of Well: 980 feet from the North line and 810 feet from the West line					
Ground Level Elev. 6815	Producing Formation Gallup		Pool Counselors Gallup		Dedicated Acreage: 160 Acres

1. Outline the acreage dedicated to the subject well by colored pencil or hatchure marks on the plat below.
2. If more than one lease is dedicated to the well, outline each and identify the ownership thereof (both as to working interest and royalty).
3. If more than one lease of different ownership is dedicated to the well, have the interests of all owners been consolidated by communitization, unitization, force-pooling, etc?

☐ Yes ☐ No If answer is "yes," type of consolidation \_\_\_\_\_

If answer is "no," list the owners and tract descriptions which have actually been consolidated. (Use reverse side of this form if necessary.) \_\_\_\_\_

No allowable will be assigned to the well until all interests have been consolidated (by communitization, unitization, forced-pooling, or otherwise) or until a non-standard unit, eliminating such interests, has been approved by the Division.



## CERTIFICATION

I hereby certify that the information contained herein is true and complete to the best of my knowledge and belief.

*Jerry McHugh*  
Name  
Jerry McHugh  
Position

Agent

Company  
Dugan Production Corp.

Date  
3-30-84

I hereby certify that the location shown on this plat was plotted from field notes of actual surveys made by me or under my supervision, and that the same is true and correct to the best of my knowledge.

Date Surveyed  
March 2, 1984

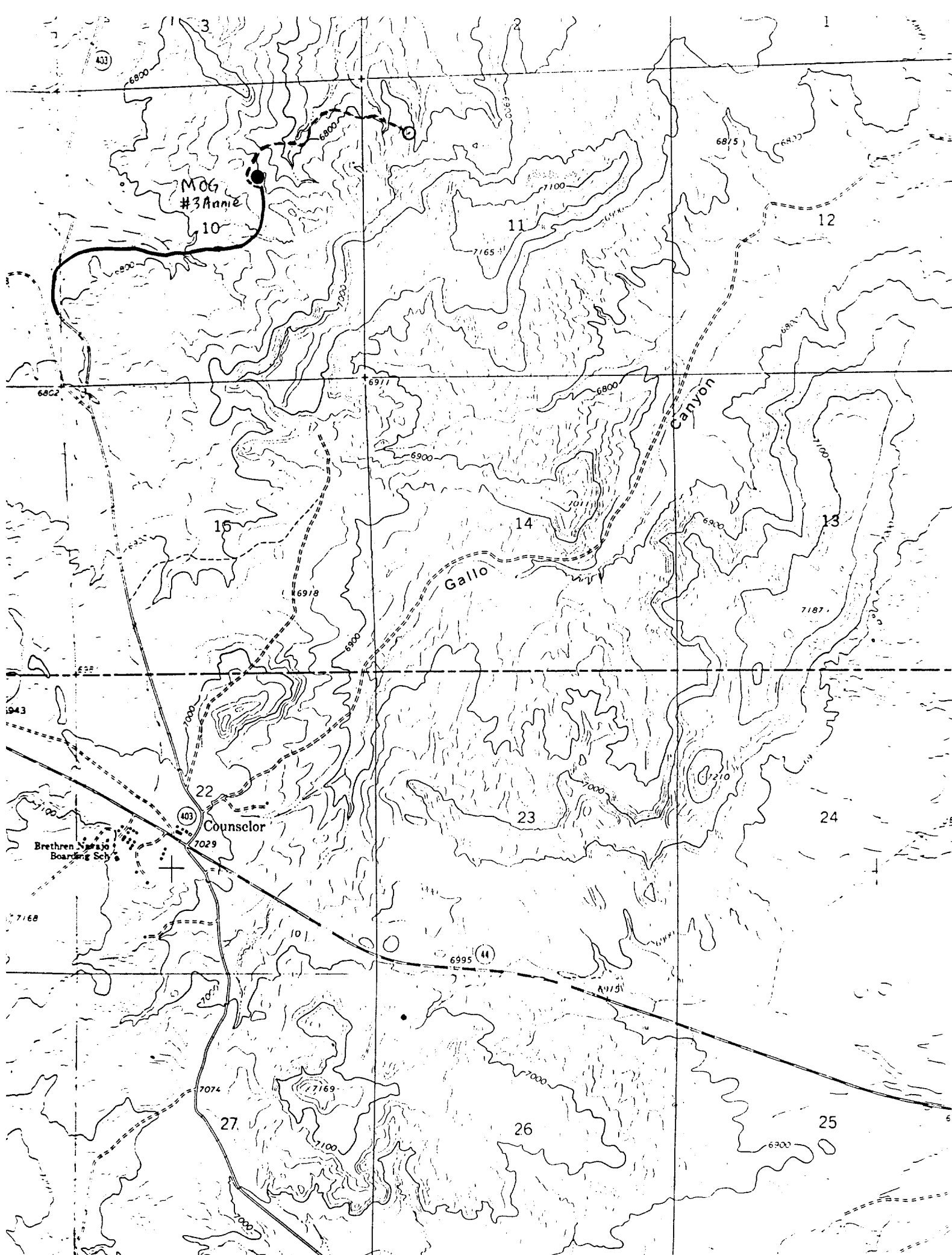
Registered Professional Engineer  
and/or Land Surveyor

*Edgar L. Risenhoover*

Certificate No. 5979

Edgar L. Risenhoover, L.S.

0 330 660 990 1320 1650 1980 2310 2640 2970 3300 3630 3960 4290 4620 4950 5280 5610 5940 6270 6600



DUGAN PRODUCTION CORP. - Fahrenheit #2

Existing Roads                      Exhibit E

Distance from nearest town or reference pt.  
Counselors, NM is 3 miles south

Type of surface dirt

Conditions none

Other                     

Planned Access Road(s)                      Exhibit E

Width 20' Maximum grades 1/2-1%

Drainage design Bar ditches where necessary

Cuts & Fills N/A

Surfacing material local dirt

Turnouts none

Culverts none

Gates none

Cattleguards none

Fence cuts none

Access road(s) do not cross Fed/Ind land.