

UNITED STATES
DEPARTMENT OF THE INTERIOR
BUREAU OF LAND MANAGEMENT

SUBMIT IN TRIPLICATE*
(Other instructions on
reverse side)

Form approved.
Budget Bureau No. 1004-0136
Expires August 31, 1985

APPLICATION FOR PERMIT TO DRILL, DEEPEN, OR PLUG BACK

1a. TYPE OF WORK

DRILL ☒

DEEPEN ☐

PLUG BACK ☐

b. TYPE OF WELL

OIL
WELL ☒

GAS
WELL ☐

OTHER

SINGLE
ZONE ☐

MULTIPLE
ZONE ☒

2. NAME OF OPERATOR

Chace Oil Company, Inc.

3. ADDRESS OF OPERATOR

313 Washington, SE, Albuquerque, NM 87108

4. LOCATION OF WELL (Report location clearly and in accordance with any State requirements.)

At surface

338' FNL & 850' FEL

At proposed prod. zone Unit 'A', Section 11, T23N, R4W

14. DISTANCE IN MILES AND DIRECTION FROM NEAREST TOWN OR POST OFFICE*

15 miles W-SW of Lindrith, New Mexico

15. DISTANCE FROM PROPOSED LOCATION TO NEAREST PROPERTY OR LEASE LINE, FT. (Also to nearest drig. unit line, if any)

338' from lease line
800' from unit line

21. ELEVATIONS (Show whether DF, RT, GR, etc.)

7302' GR

23.

PROPOSED CASING AND CEMENTING PROGRAM

SIZE OF HOLE	SIZE OF CASING	WEIGHT PER FOOT	SETTING DEPTH
12 1/4"	8 5/8"	24# (J-55)	225'
7 7/8"	4 1/2"	11.6# (N-80)	7595'

DRILLING OPERATIONS AUTHORIZED ARE
SUBJECT TO COMPLIANCE WITH ATTACHED
"GENERAL REQUIREMENTS"

225 sxs (405 CF) Class B cement
1st stage: 750 sxs (1350 CF)
50/50 pozmix
2nd stage: 505 sxs (909 CF)
40/60 pozmix, (12% gel)
40 sxs (72 CF) Class B cement

Drill 230' of 12 1/4" surface hole. Set 225' of 8 5/8" casing. Cement to surface with 225 sxs (405 CF) cement. Using a water base mud (15% oil) and Schaeffer 5000# standard doublegate hydraulic BOP, drill 7 7/8" hole to 7595' to test the Dakota formation. Logging program: Run Dil, Caliper, GR, SP, FDC-CNL from T. D. to surface.

Estimated Tops:

Ojo Alamo	2650'	Point Lookout	5215'	Dakota 'A'	7270'
Pictured Cliffs	3080'	Gallup	5884'	Dakota 'D'	7414'
Chacra	3425'	Tocito	6885'	Burro Canyon	7520'
Cliff House	4620'	Greenhorn	7185'		

IN ABOVE SPACE DESCRIBE PROPOSED PROGRAM: If proposal is to deepen or plug back, give data on present productive zone and proposed new productive zone. If proposal is to drill or deepen directionally, give pertinent data on subsurface locations and measured and true vertical depths. Give blowout preventer program, if any.

24.

SIGNED

Monte Anderson

TITLE

Geologist

(This space for Federal or State office use)

This action is subject to technical and procedural review pursuant to 43 CFR 3165.3 and appeal pursuant to 43 CFR 3165.4.

APPROVAL DATE

JUN 04 1985

OIL CON. DIV.

DIST. 3

DATE May 1, 1985

APPROVED
AS AMENDED

DATE MAY 31 1985

/s/ J. Stan McKee

for M. MILLENBACH
AREA MANAGER

NMOCG

*See Instructions On Reverse Side

All distances must be from the outer boundaries of the Section.

Operator CHACE OIL COMPANY			Lease JICARILLA		Well No. 47-18
Unit Letter A	Section 11	Township 23 NORTH	Range 4 WEST	County RIO ARRIBA	
Actual Footage Location of Well: 338 feet from the NORTH line and 850 feet from the EAST line					
Ground Level Elev. 7302'	Producing Formation Gallup-Dakota	Pool S. Lindrith Gallup-Dakota	Dedicated Acreage: 40 Acres		

1. Outline the acreage dedicated to the subject well by colored pencil or hatchure marks on the plat below.
2. If more than one lease is dedicated to the well, outline each and identify the ownership thereof (both as to working interest and royalty).
3. If more than one lease of different ownership is dedicated to the well, have the interests of all owners been consolidated by communitization, unitization, force-pooling, etc?

☐ Yes ☐ No If answer is "yes," type of consolidation _____

If answer is "no," list the owners and tract descriptions which have actually been consolidated. (Use reverse side of this form if necessary.) _____

No allowable will be assigned to the well until all interests have been consolidated (by communitization, unitization, forced-pooling, or otherwise) or until a non-standard unit, eliminating such interests, has been approved by the Division.

<p>RECEIVED MAY 03 1985 BUREAU OF LAND MANAGEMENT FARMINGTON RESOURCE AREA</p>		<p>RECEIVED JUN 04 1985 OIL CON. DIV. DIST. 3</p>	
--	--	---	--

CERTIFICATION

I hereby certify that the information contained herein is true and complete to the best of my knowledge and belief.

Monte Anderson

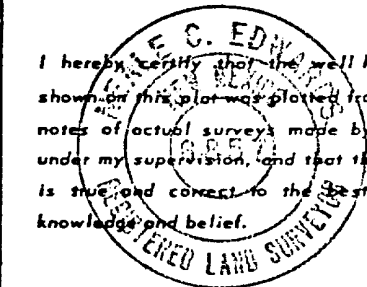
Name
Geologist

Position
Chace Oil Company

Company
3-29-85

Date

I hereby certify that the well location shown on this plat was plotted from field notes of actual surveys made by me or under my supervision, and that the same is true and correct to the best of my knowledge and belief.

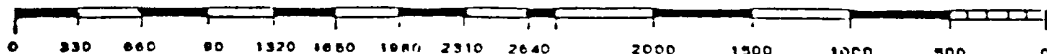


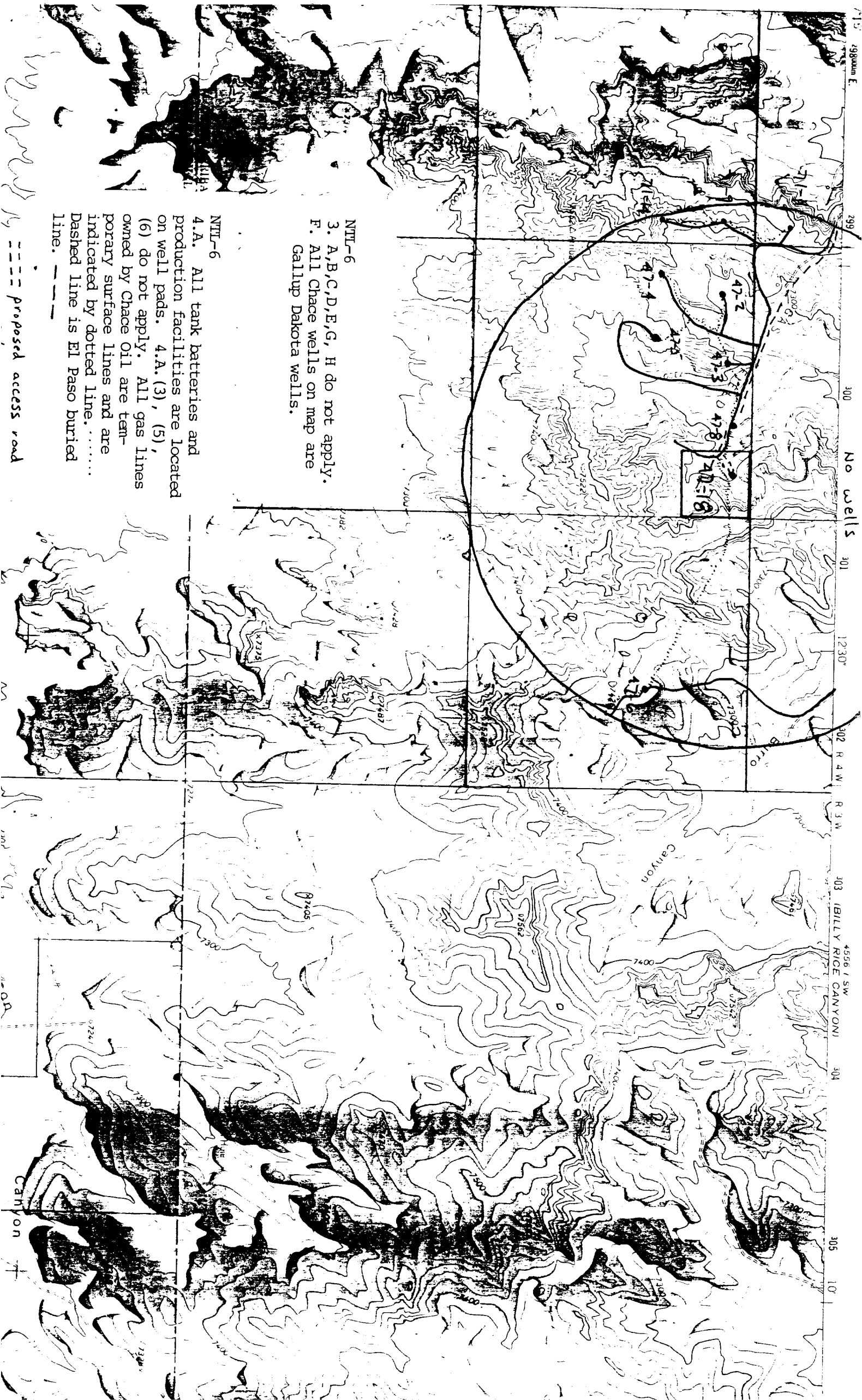
Date Surveyed
3-21-85

Registered Professional Engineer
and/or Land Surveyor

Mark C. Edwards

Certificate No.
6857





299 300 301 302 R 4 W R 3 W 303 (BILLY RICE CANYON) 304 305 10'

NTL-6
3. A,B,C,D,E,G, H do not apply.
F. All Chace wells on map are
Gallup Dakota wells.

NTL-6
4.A. All tank batteries and
production facilities are located
on well pads. 4.A. (3), (5),
(6) do not apply. All gas lines
owned by Chace Oil are tem-
porary surface lines and are
indicated by dotted line.....
Dashed line is El Paso buried
line. ---

--- proposed access road