

UNITED STATES  
DEPARTMENT OF THE INTERIOR  
BUREAU OF LAND MANAGEMENT

APPLICATION FOR PERMIT TO DRILL, DEEPEN, OR PLUG BACK

1a. TYPE OF WORK

DRILL ☒

DEEPEN ☐

PLUG BACK ☐

b. TYPE OF WELL

OIL  
WELL ☒

GAS  
WELL ☐

OTHER

SINGLE  
ZONE ☐

MULTIPLE  
ZONE ☒

2. NAME OF OPERATOR

Chace Oil Company, Inc.

3. ADDRESS OF OPERATOR

313 Washington, SE, Albuquerque, NM 87108

4. LOCATION OF WELL (Report location clearly and in accordance with any State requirements.)

At surface

2284' FSL & 855' FWL

At proposed prod. zone Unit 'L', Section 13, T23N, R4W

14. DISTANCE IN MILES AND DIRECTION FROM NEAREST TOWN OR POST OFFICE\*

15 miles W-SW of Lindrith, New Mexico

15. DISTANCE FROM PROPOSED\* 2284' from lease line  
LOCATION TO NEAREST  
PROPERTY OR LEASE LINE, FT. 465' from unit line  
(Also to nearest drlg. unit line, if any)

16. NO. OF ACRES IN LEASE

2560

17. NO. OF ACRES ASSIGNED  
TO THIS WELL

40

18. DISTANCE FROM PROPOSED LOCATION\*  
TO NEAREST WELL, DRILLING COMPLETED,  
OR APPLIED FOR, ON THIS LEASE, FT.

1500'

19. PROPOSED DEPTH

7443'

20. ROTARY OR CABLE TOOLS

Rotary

21. ELEVATIONS (Show whether DF, RT, GR, etc.)

7285' GR

22. APPROX. DATE WORK WILL START\*

7/15/85

23. PROPOSED CASING AND CEMENTING PROGRAM

DRILLING OPERATIONS AUTHORIZED ARE  
SUBJECT TO COMPLIANCE WITH ATTACHED  
"GENERAL REQUIREMENTS".

SIZE OF HOLE	SIZE OF CASING	WEIGHT PER FOOT	SETTING DEPTH
12 1/4"	8 5/8"	24# (J-55)	225'
7 7/8"	4 1/2"	11.6# (N-80)	7443'

225 sxs (405 CF) Class B cement  
First stage: 750 sxs (1350 CF)  
50/50 pozmix.  
Second stage: 505 sxs (909 CF)  
40/60 pozmix (12% gel)  
40 sxs (72 CF) Class B cement

Drill 230' of 12 1/4" surface hole. Set 225' of 8 5/8" casing. Cement to surface with 225 sxs (405 CF) cement. Using a water base mud (15% oil) and Schaeffer 5000# standard doublegate hydraulic BOP, drill 7 7/8" hole to 7443' to test the Dakota formation. Logging Program: Run Dil, Caliper, GR, SP, FDC-CNL from T. D. to surface.

Estimated Tops:

Ojo Alamo	2512'	Point Lookout	5006'	Dakota 'A'	7120'
Pictured Cliffs	2924'	Gallup	5708'	Dakota 'D'	7270'
Chacra	3272'	Tocito	6729'	Burro Canyon	7368'
Cliff House	4418'	Greenhorn	7038'		

IN ABOVE SPACE DESCRIBE PROPOSED PROGRAM: If proposal is to deepen or plug back, give data on present productive zone and proposed new productive zone. If proposal is to drill or deepen directionally, give pertinent data on subsurface locations and measured and true vertical depths. Also blowout preventer program, if any.

24.

SIGNED

Monte Anderson

TITLE

Geologist

DATE

MAY 3, 1985

(This space for Federal or State office use)

This action is subject to technical and procedural review pursuant to 43 CFR 3165.3 and appeal pursuant to 43 CFR 3165.4.

REVAL DATE

APPROVED  
AS AMENDED

JUN 17 1985

/s/ J. Stan McKee

for M. MILLENBACH  
AREA MANAGER

NMOCC

\*See Instructions On Reverse Side

All distances must be from the outer boundaries of the Section.

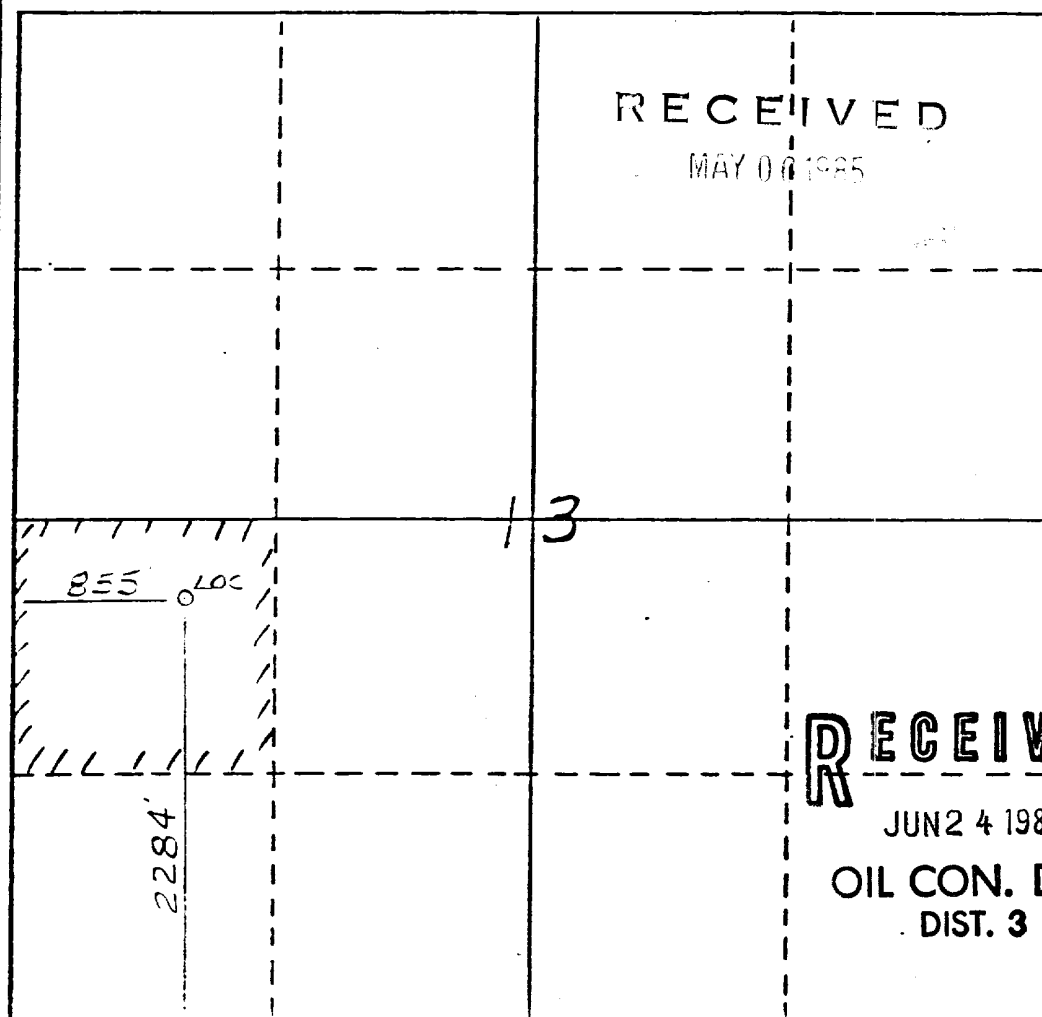
Operator <b>CHACE OIL COMPANY</b>		Lease <b>JICARILLA 45</b>		Well No. <b>77-22</b>	
Unit Letter <b>L</b>	Section <b>13</b>	Township <b>23 NORTH</b>	Range <b>4 WEST</b>	County <b>RIO ARRIBA</b>	
Actual Footage Location of Well: <b>2284</b> feet from the <b>SOUTH</b> line and <b>855</b> feet from the <b>WEST</b> line					
Ground Level Elev. <b>7285'</b>	Producing Formation <b>Gallup - Dakota</b>		Pool <b>S. Lindrith Gallup - Dakota</b>	Dedicated Acreage: <b>40</b> Acres	

1. Outline the acreage dedicated to the subject well by colored pencil or hatchure marks on the plat below.
2. If more than one lease is dedicated to the well, outline each and identify the ownership thereof (both as to working interest and royalty).
3. If more than one lease of different ownership is dedicated to the well, have the interests of all owners been consolidated by communitization, unitization, force-pooling, etc?

☐ Yes ☐ No If answer is "yes," type of consolidation \_\_\_\_\_

If answer is "no," list the owners and tract descriptions which have actually been consolidated. (Use reverse side of this form if necessary.) \_\_\_\_\_

No allowable will be assigned to the well until all interests have been consolidated (by communitization, unitization, forced-pooling, or otherwise) or until a non-standard unit, eliminating such interests, has been approved by the Division.



CERTIFICATION

I hereby certify that the information contained herein is true and complete to the best of my knowledge and belief.

**Monte Anderson**

Name

**Geologist**

Position

**Chace Oil Company**

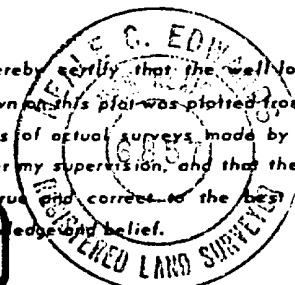
Company

**3-29-85**

Date

\_\_\_\_\_

I hereby certify that the well location shown on this plat was plotted from field notes of actual surveys made by me or under my supervision, and that the same is true and correct to the best of my knowledge and belief.



**RECEIVED**

**JUN 24 1985**

**OIL CON. DIV. 3-21-85**  
**DIST. 3**

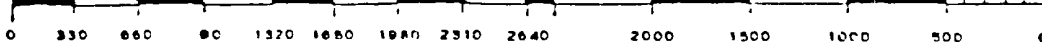
Date Surveyed

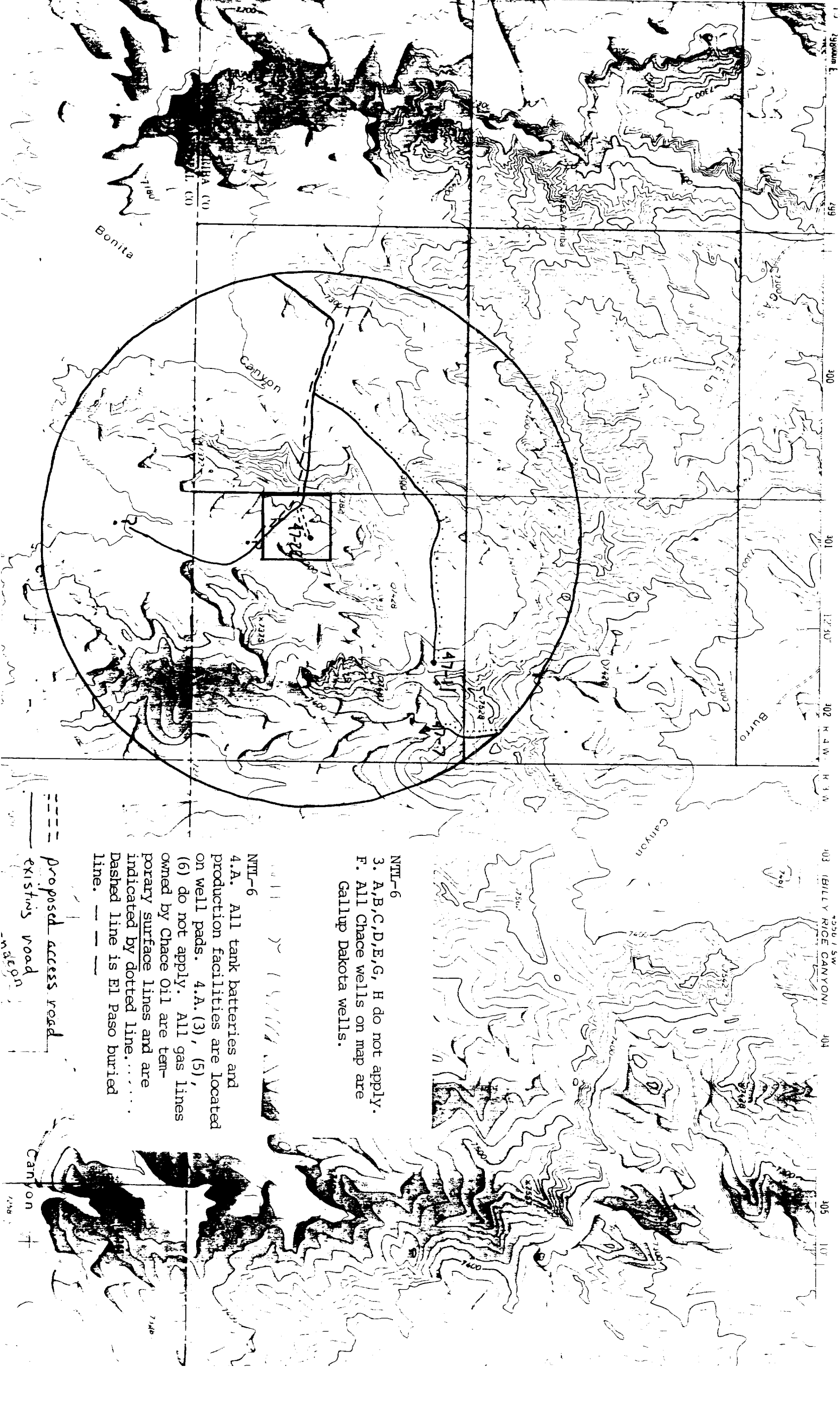
Registered Professional Engineer and/or Land Surveyor

**G. Edwin Hall**

Certificate No.

**6857**





NTL-6  
3. A,B,C,D,E,G, H do not apply.  
F. All Chace wells on map are Gallup Dakota wells.

NTL-6  
4.A. All tank batteries and production facilities are located on well pads. 4.A.(3), (5), (6) do not apply. All gas lines owned by Chace Oil are temporary surface lines and are indicated by dotted line..... Dashed line is El Paso buried line. --- ---

--- proposed access road  
--- existing road